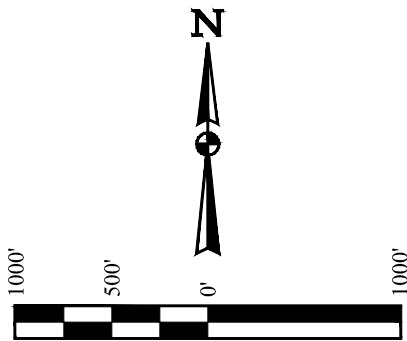


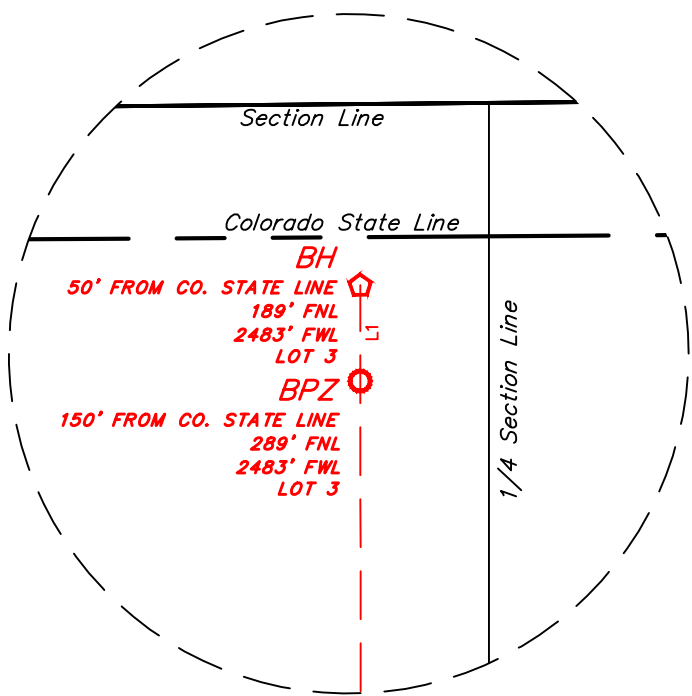
- LEGEND:**
- = SURFACE LOCATION (SL).
  - ◆ = LANDING POINT (LP).
  - ⬠ = BOTTOM PRODUCTION ZONE (BPZ).
  - = BOTTOM HOLE (BH).
  - ▲ = SECTION CORNER LOCATED.
  - △ = SECTION CORNERS RE-ESTABLISHED.  
(Not Set on Ground.) (NAD 83)

**NOTE:**  
Distances referenced  
on plat to section lines  
are perpendicular.



LINE TABLE		
LINE	DIRECTION	LENGTH
L1	N00°04'53"W	100.00'

*Detail "A"*  
No Scale



PDOP = 1.4	
EXISTING GROUND ELEVATION = 5352'	
<b>NAD 83 (SURFACE LOCATION)</b>	
LATITUDE = 40°58'18.74" (40.971871°)	
LONGITUDE = -104°24'44.59" (-104.412385°)	
<b>NAD 27 (SURFACE LOCATION)</b>	
LATITUDE = 40°58'18.80" (40.971888°)	
LONGITUDE = -104°24'42.74" (-104.411873°)	
<b>STATE PLANE NAD 83 (CO. NORTH)</b>	
N: 1598749.62' E: 3300349.09'	
<b>STATE PLANE NAD 27 (CO. NORTH)</b>	
N: 598747.23' E: 2300498.59'	
<b>NAD 83 (LANDING POINT)</b>	
LATITUDE = 40°58'25.18" (40.973660°)	
LONGITUDE = -104°24'02.22" (-104.400617°)	
<b>NAD 27 (LANDING POINT)</b>	
LATITUDE = 40°58'25.24" (40.973678°)	
LONGITUDE = -104°24'00.38" (-104.400104°)	
<b>STATE PLANE NAD 83 (CO. NORTH)</b>	
N: 1599441.71' E: 3303590.75'	
<b>STATE PLANE NAD 27 (CO. NORTH)</b>	
N: 599439.30' E: 2303740.25'	
<b>NAD 83 (BOTTOM PRODUCTION ZONE)</b>	
LATITUDE = 41°00'04.51" (41.001252°)	
LONGITUDE = -104°24'01.51" (-104.400418°)	
<b>NAD 27 (BOTTOM PRODUCTION ZONE)</b>	
LATITUDE = 41°00'04.57" (41.001269°)	
LONGITUDE = -104°23'59.66" (-104.399906°)	
<b>STATE PLANE NAD 83 (CO. NORTH)</b>	
N: 1609495.05' E: 3303520.83'	
<b>STATE PLANE NAD 27 (CO. NORTH)</b>	
N: 609492.45' E: 2303670.38'	
<b>NAD 83 (BOTTOM HOLE)</b>	
LATITUDE = 41°00'05.50" (41.001527°)	
LONGITUDE = -104°24'01.50" (-104.400416°)	
<b>NAD 27 (BOTTOM HOLE)</b>	
LATITUDE = 41°00'05.56" (41.001544°)	
LONGITUDE = -104°23'59.65" (-104.399904°)	
<b>STATE PLANE NAD 83 (CO. NORTH)</b>	
N: 1609595.03' E: 3303520.13'	
<b>STATE PLANE NAD 27 (CO. NORTH)</b>	
N: 609592.43' E: 2303669.68'	

**BASIS OF ELEVATION**  
OPUS SOLUTION GENERATED NAVD 88

**UELS, LLC**  
Corporate Office \* 85 South 200 East  
Vernal, UT 84078 \* (435) 789-1017



REV: 01 08-22-24 Q.S.J. (UPDATE STATE LINE LABEL)

**BISON IV OPERATING LLC**

**FOX CREEK 12-63 34-23-2**  
**NE 1/4 NE 1/4, SECTION 34, T12N, R63W, 6th P.M.**  
**WELD COUNTY, COLORADO**

SURVEYED BY	J.C., Z.B.	04-12-17	SCALE
DRAWN BY	Q.S.J.	08-14-24	1" = 1000'

**WELL LOCATION PLAT**

THIS IS TO CERTIFY THAT THE ABOVE PLAT IS A TRUE AND CORRECT COPY OF THE ORIGINAL PLAT AND THAT THE SAME ARE TRUE AND CORRECT TO THE BEST OF MY KNOWLEDGE AND BELIEF.

REGISTERED LAND SURVEYOR  
REGISTRATION NO. 28285  
STATE OF COLORADO

2024-08-24