



**Radial Bond**  
**Gamma Ray**  
**Collar Correlation Log**

Company **OXY**  
 Well **Rasmussen 23-29**  
 Field **Wattenberg**  
 County **Weld** State **Colorado**

Location  
**QTR: SWSE SEC: 29 TWN: 2N RNG: 68W**  
**API- 05-123-30874**

Permanent Datum	Ground Level	Elevation	4950'	Other Services <b>SQZ</b>
Log Measured From	Kelly Bushing			
Drilling Measured From	Kelly Bushing			

Date	11JUN24.
Run Number	One
Depth Driller	7870'
Depth Logger	4000'
Bottom Logged Interval	4000'
Top Log Interval	Surface
Casing Size	4-1/2"
Type Fluid	Water
Density / Viscosity	N/A
Max. Recorded Temp.	N/A
Estimated Cement Top	----
Time Well Ready	3:30
Time Logger on Bottom	3:50
Equipment Number	200099
Location	Sterling, Co
Recorded By	Levi Arnold
Witnessed By	Jeremy Caldwell

Borehole Record			Tubing Record				
Run Number	Bit	From	To	Size	Weight	From	To

Casing Record	Size	Mgt/Ft	Top	Bottom
Surface String	8-5/8"	24#	Surface	859'
Prot. String				
Production String	4-1/2"	11.6#	Surface	7857'
Liner				

<<< Fold Here >>>

All interpretations are opinions based on inferences from electrical or other measurements and we cannot and do not guarantee the accuracy or correctness of any interpretation, and we shall not, except in the case of gross or willful negligence on our part, be liable or responsible for any loss, costs, damages, or expenses incurred or sustained by anyone resulting from any interpretation made by any of our officers, agents or employees. These interpretations are also subject to our general terms and conditions set out in our current Price Schedule.

**Comments**

**Factory Radii Service Used**  
**Tool Calibrated At 1764'**  
**Log Correlated to Log Ran by J-W Wireline Company On JULY-20-2010**  
**Thank You for Using Nextier Wireline Services!**

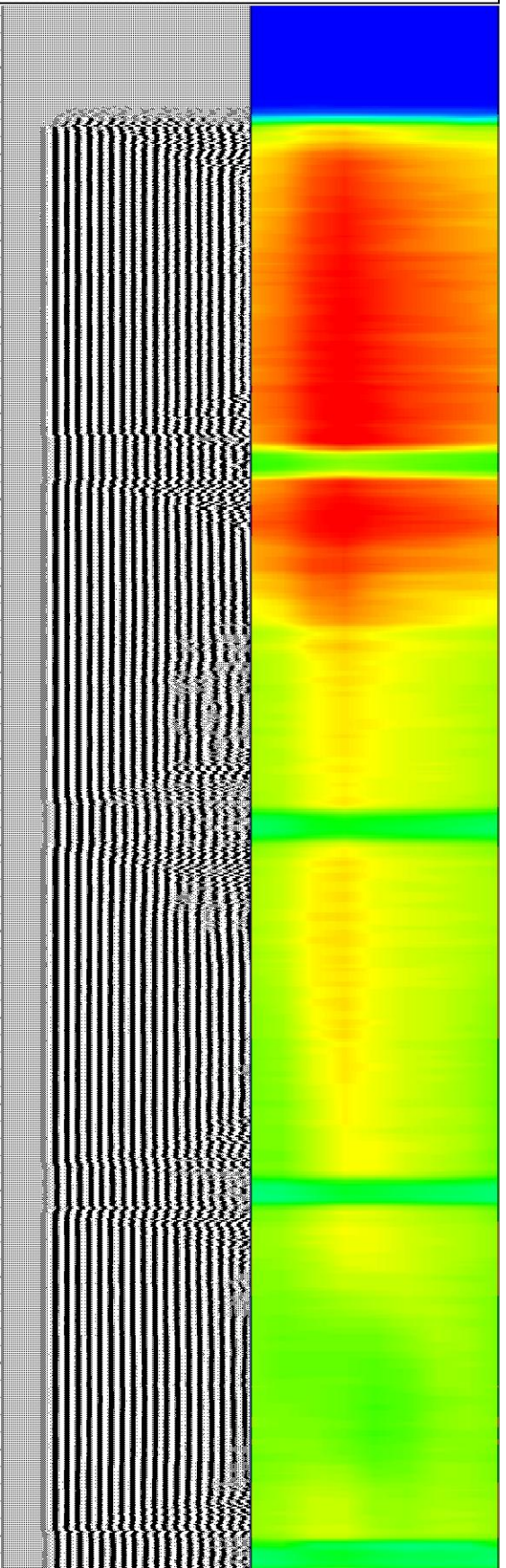
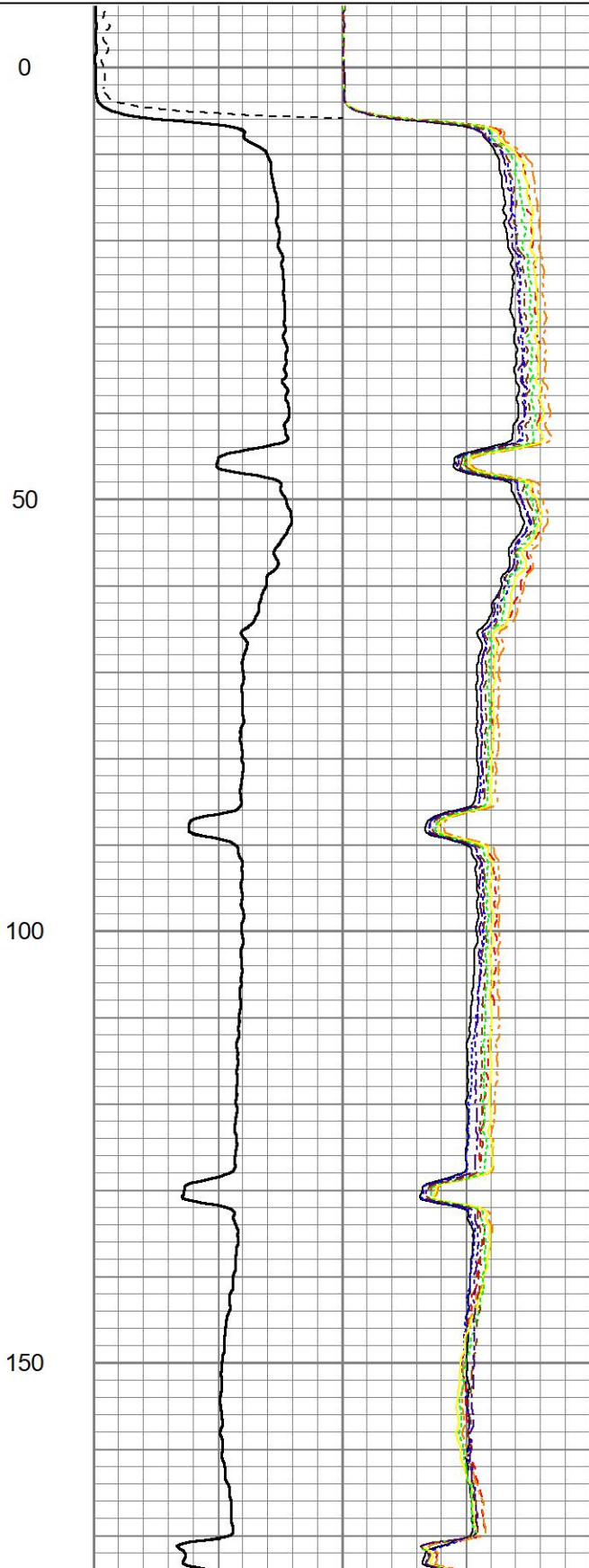
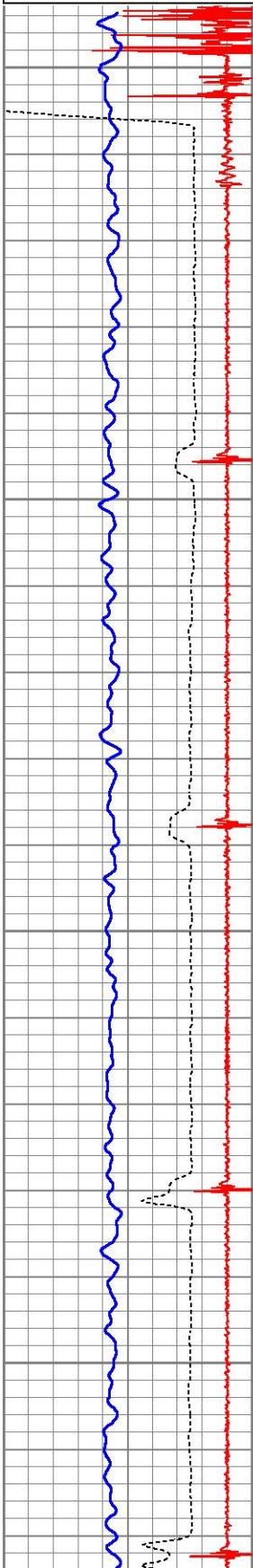
Database File	rasmussen23-29rcbl.db
Dataset Pathname	pass4
Presentation Format	zwag (2)
Dataset Creation	Wed Jun 12 15:48:05 2024
Charted by	Depth in Feet scaled 1:240

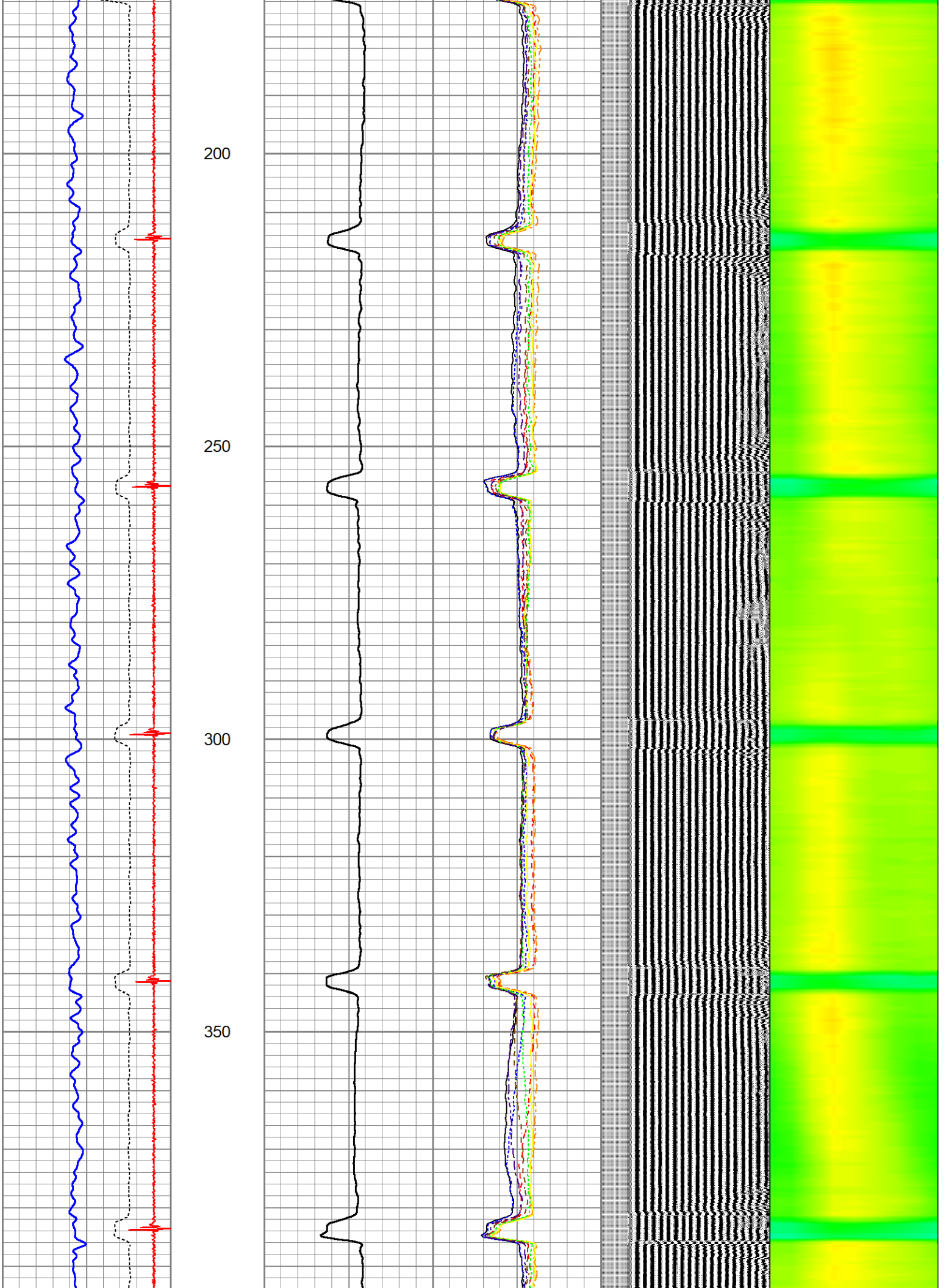
9	CCL	-1
0	GR (GAPI)	150
320	TT3 (usec)	220

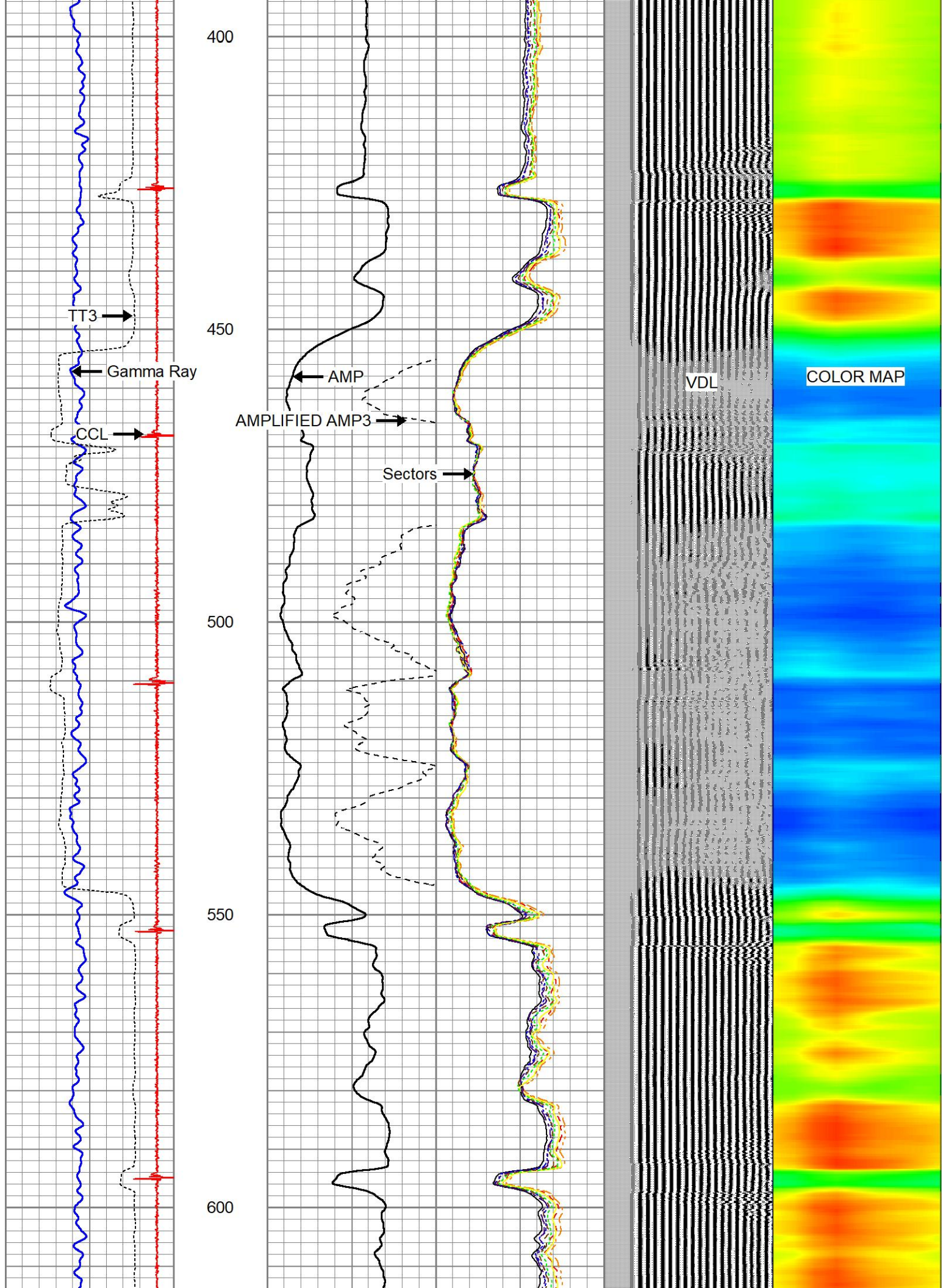
0	AMP (mV)	100
0	AMPLIFIED AMP3	20

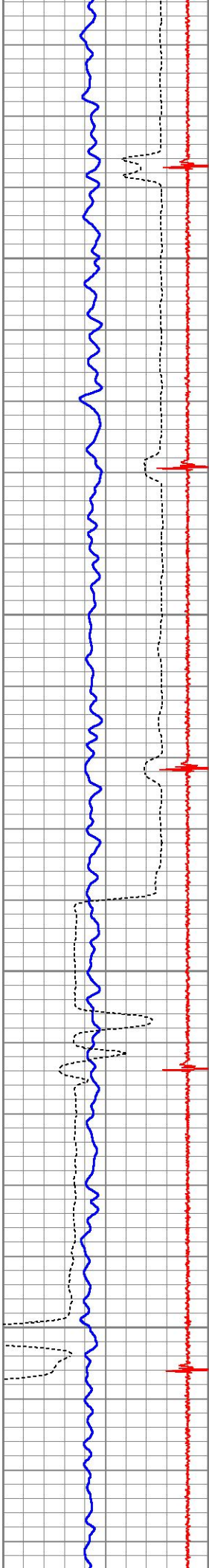
0	AMPS1	100
0	AMPS2	100
0	AMPS3	100
0	AMPS4	100
0	AMPS5	100
0	AMPS6	100
0	AMPS7	100
0	AMPS8	100

200	VDL (usec)	1200	1	RADIAL MAP	8
-----	------------	------	---	------------	---







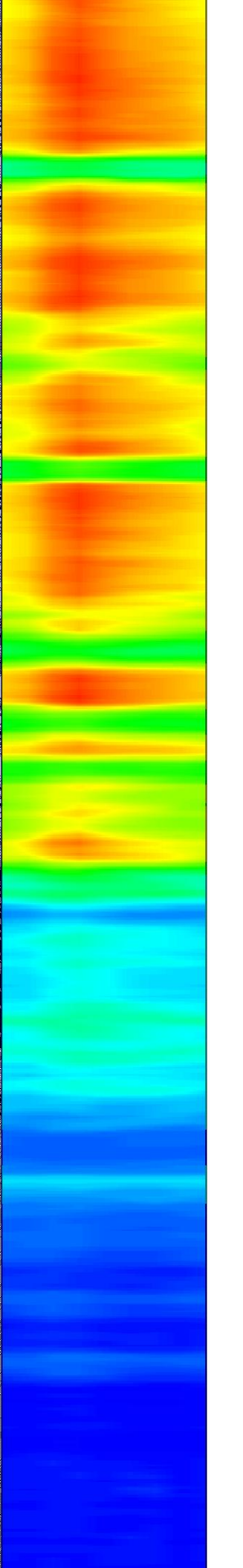
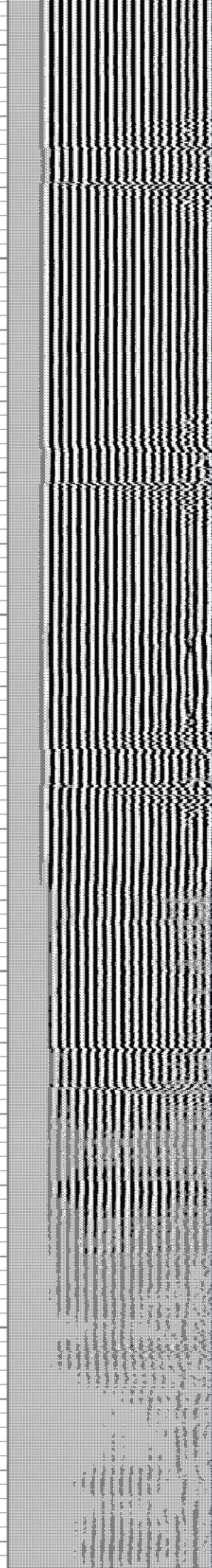
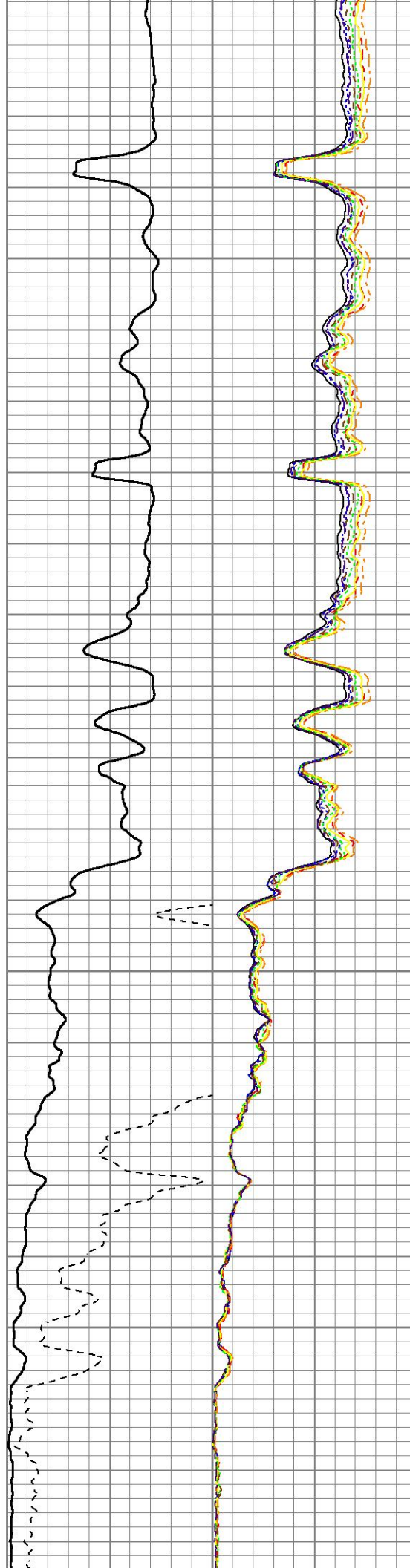


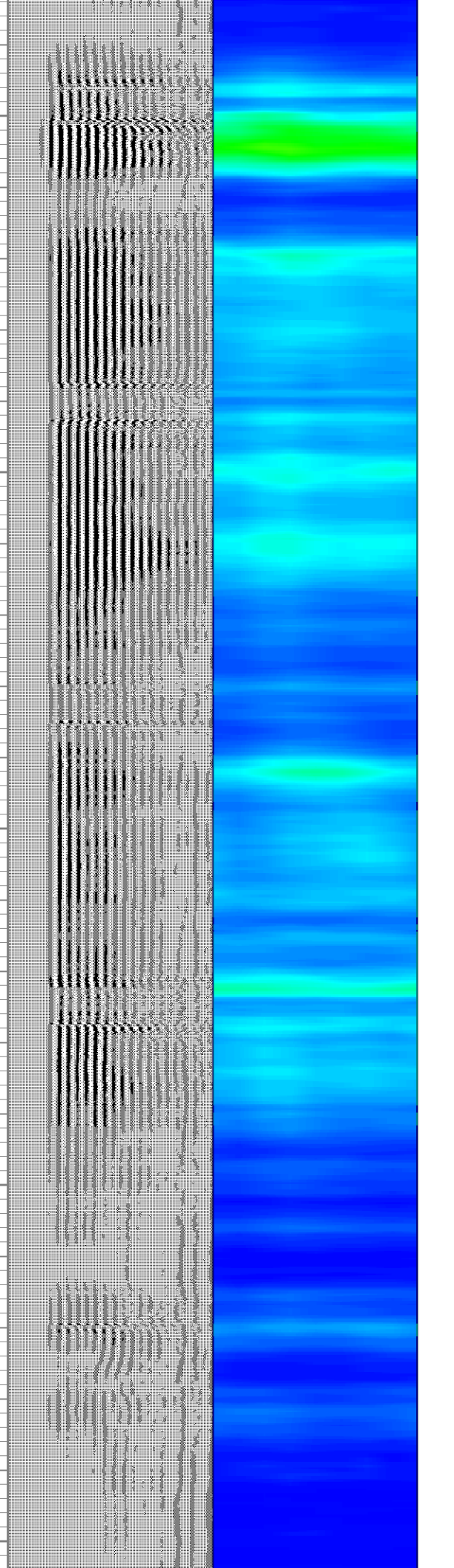
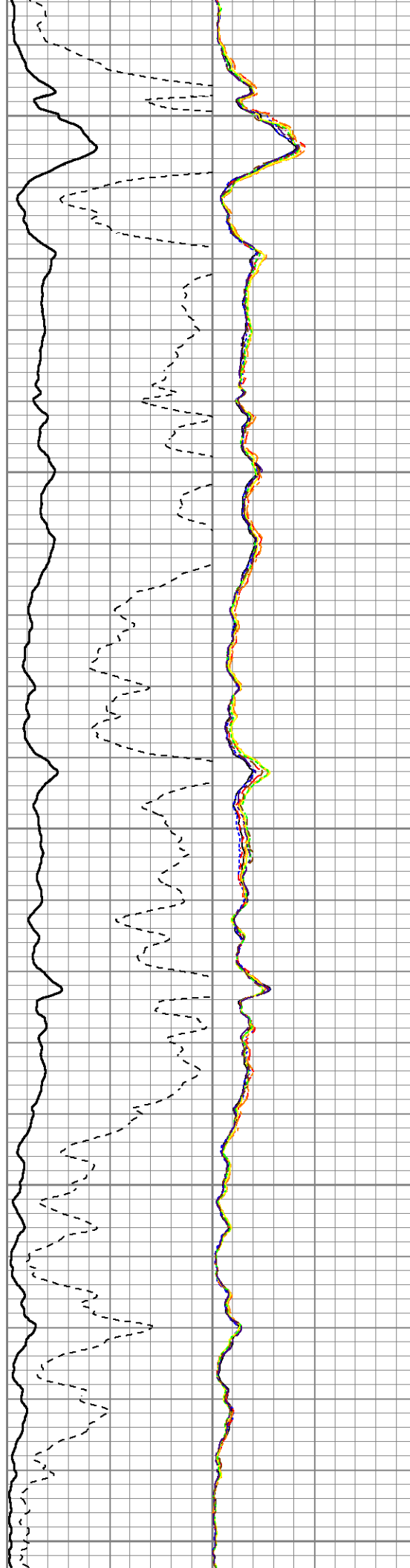
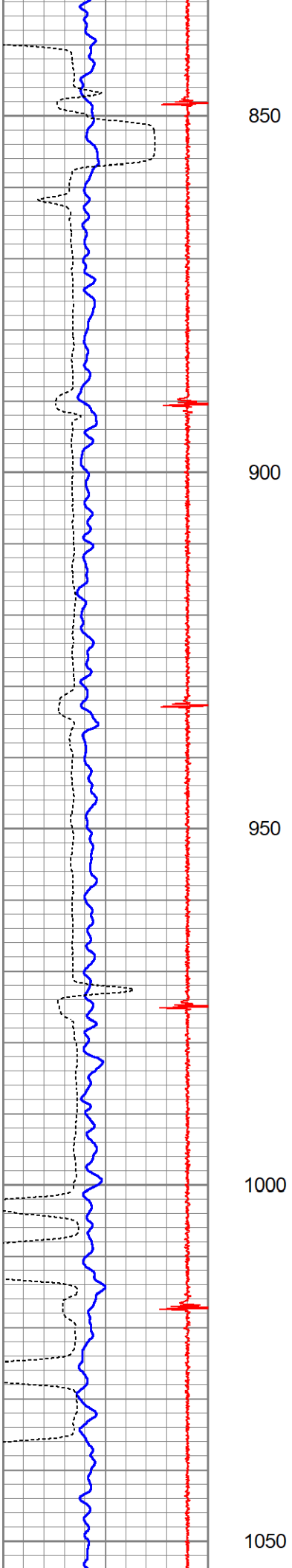
650

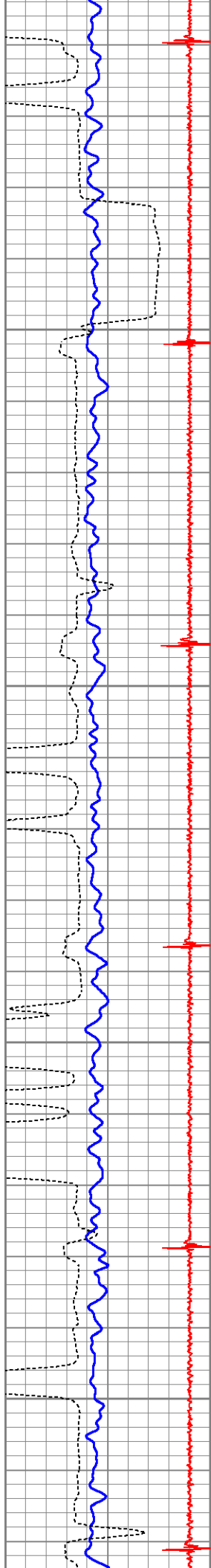
700

750

800





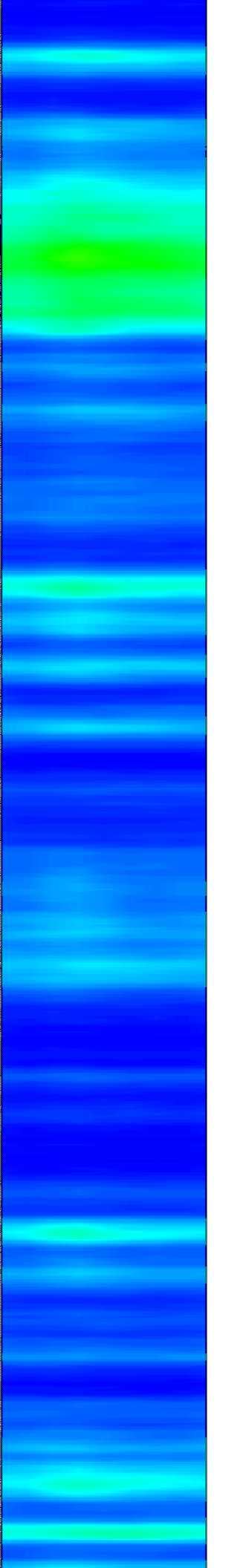
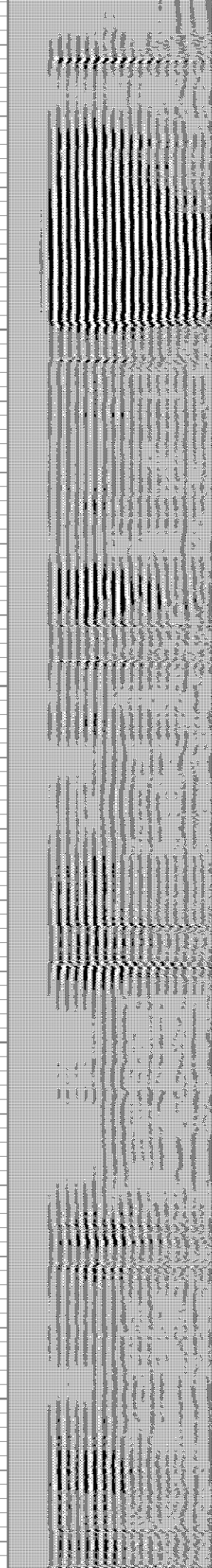
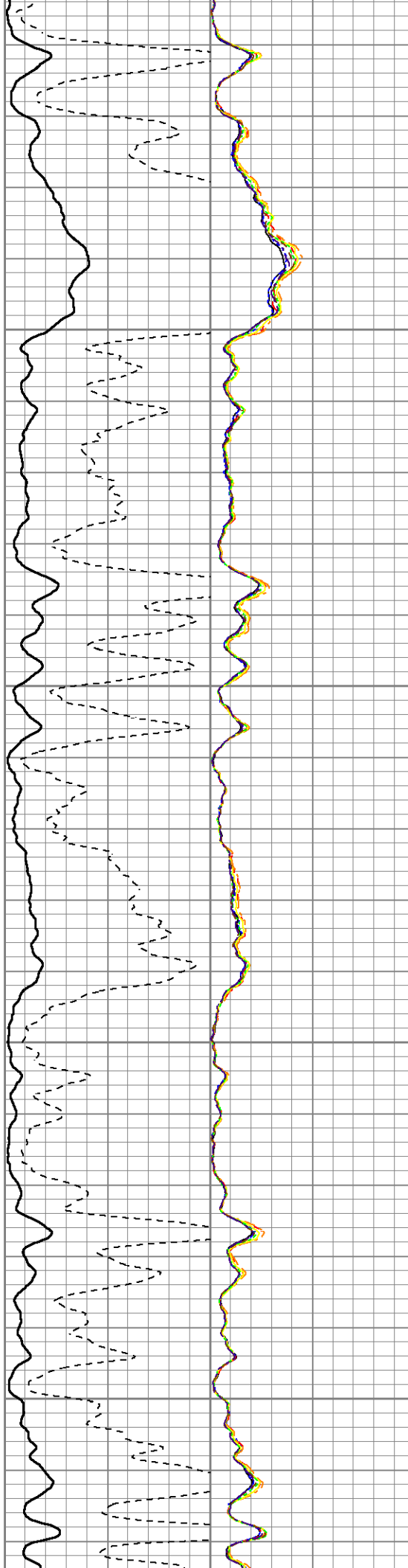


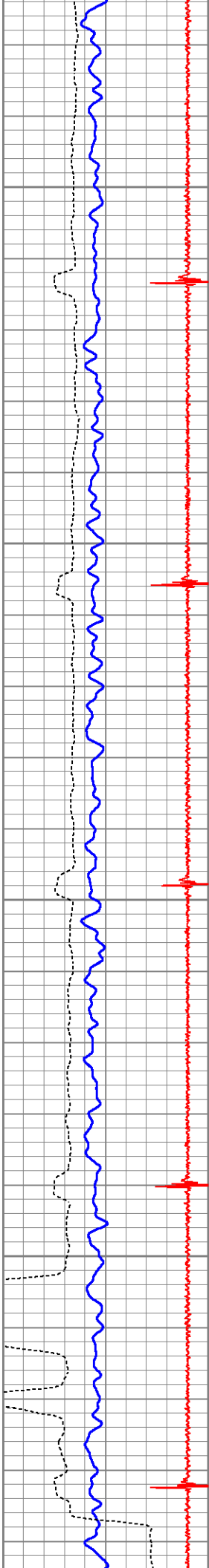
1100

1150

1200

1250



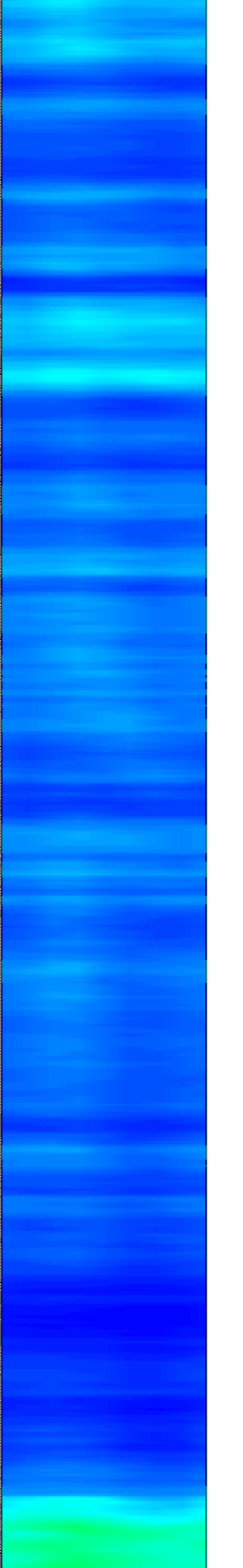
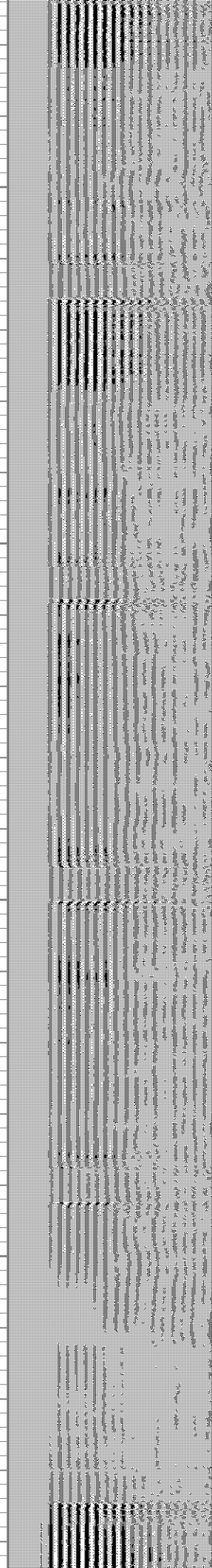
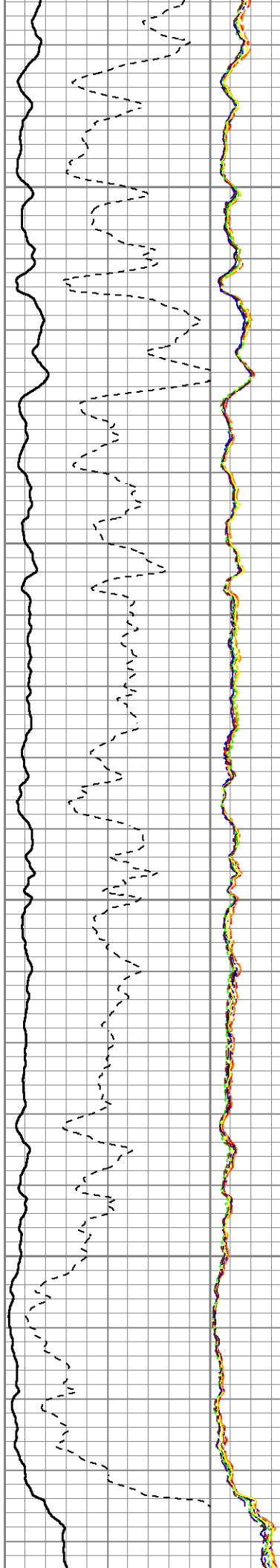


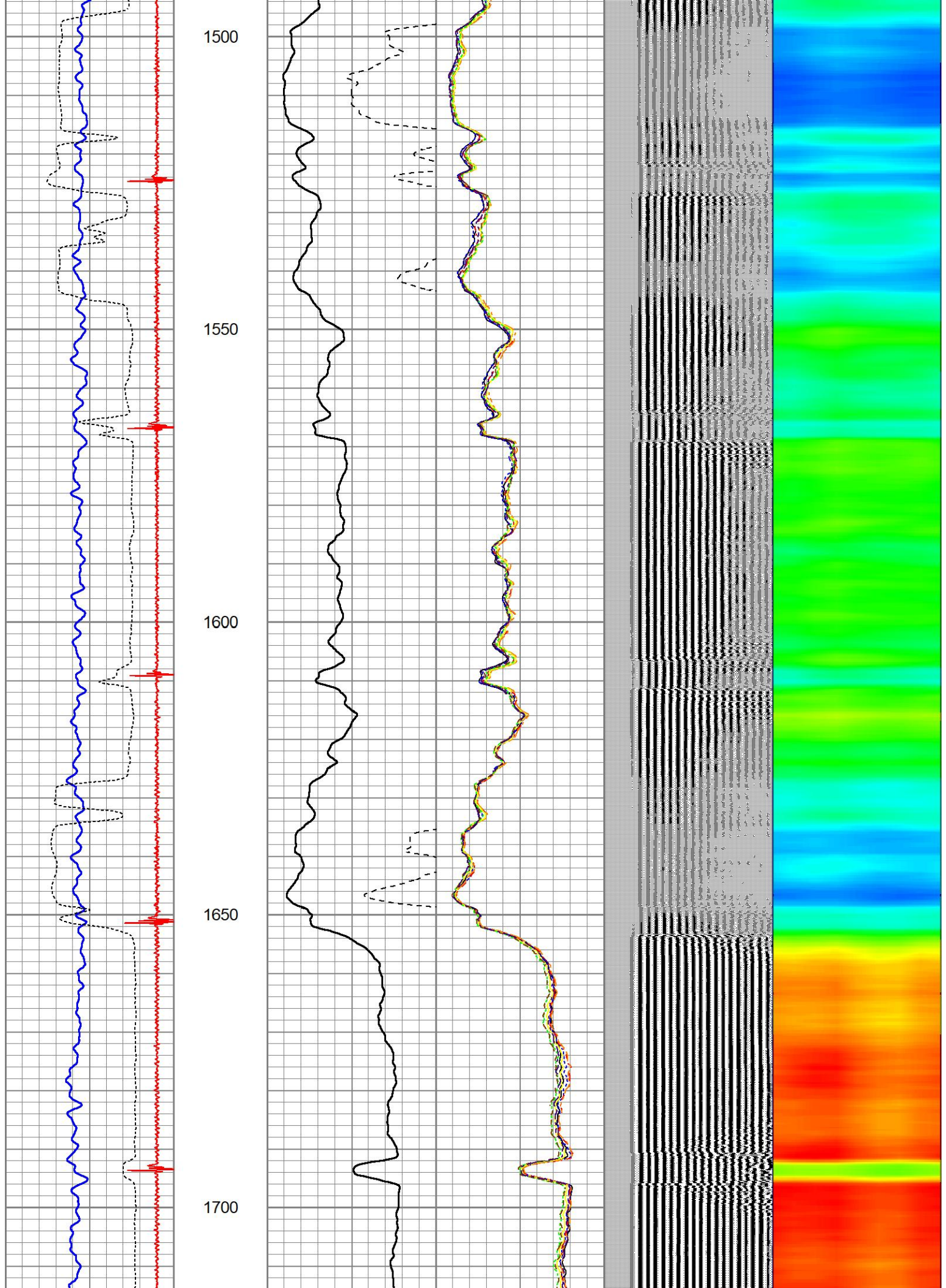
1300

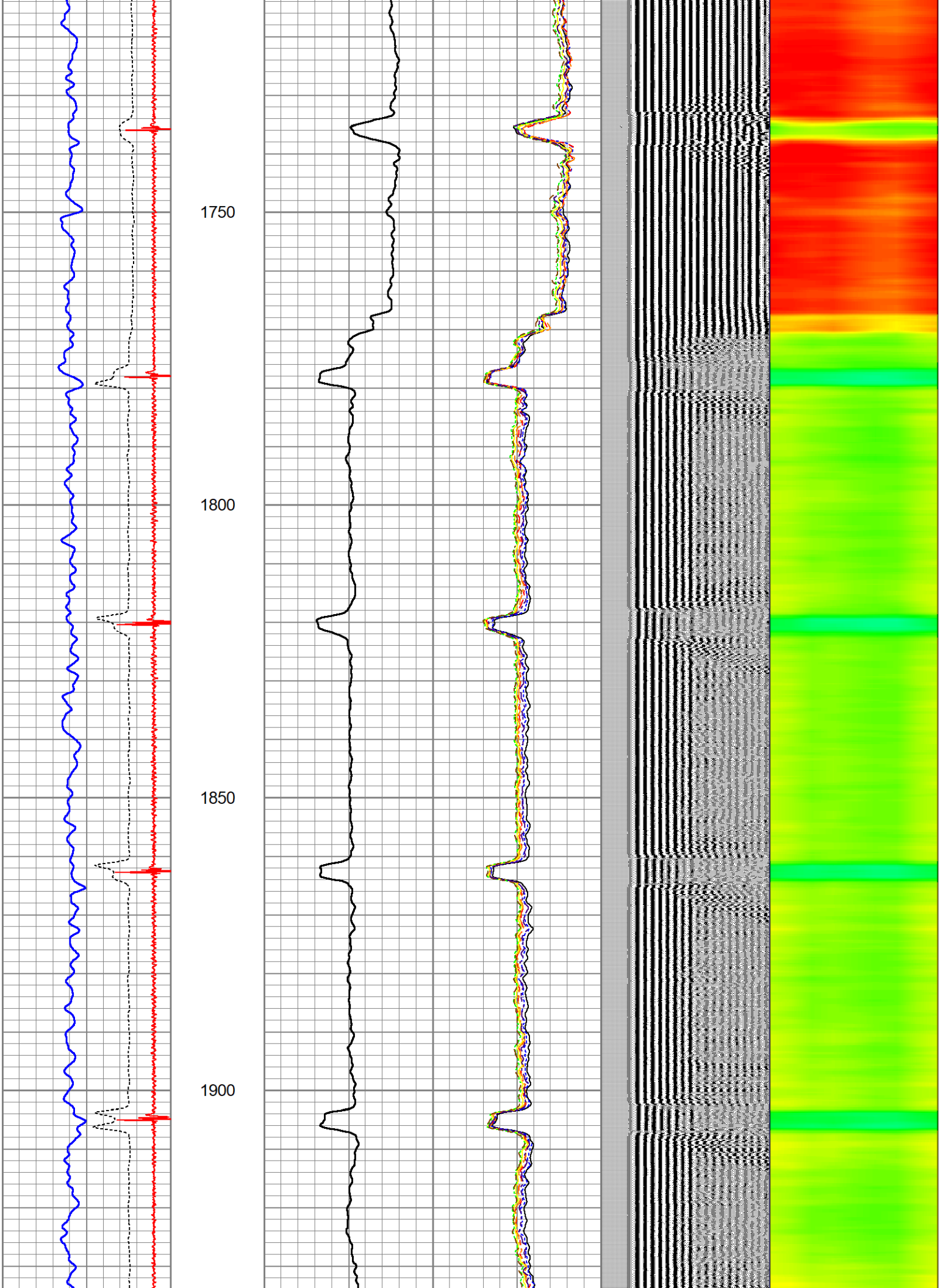
1350

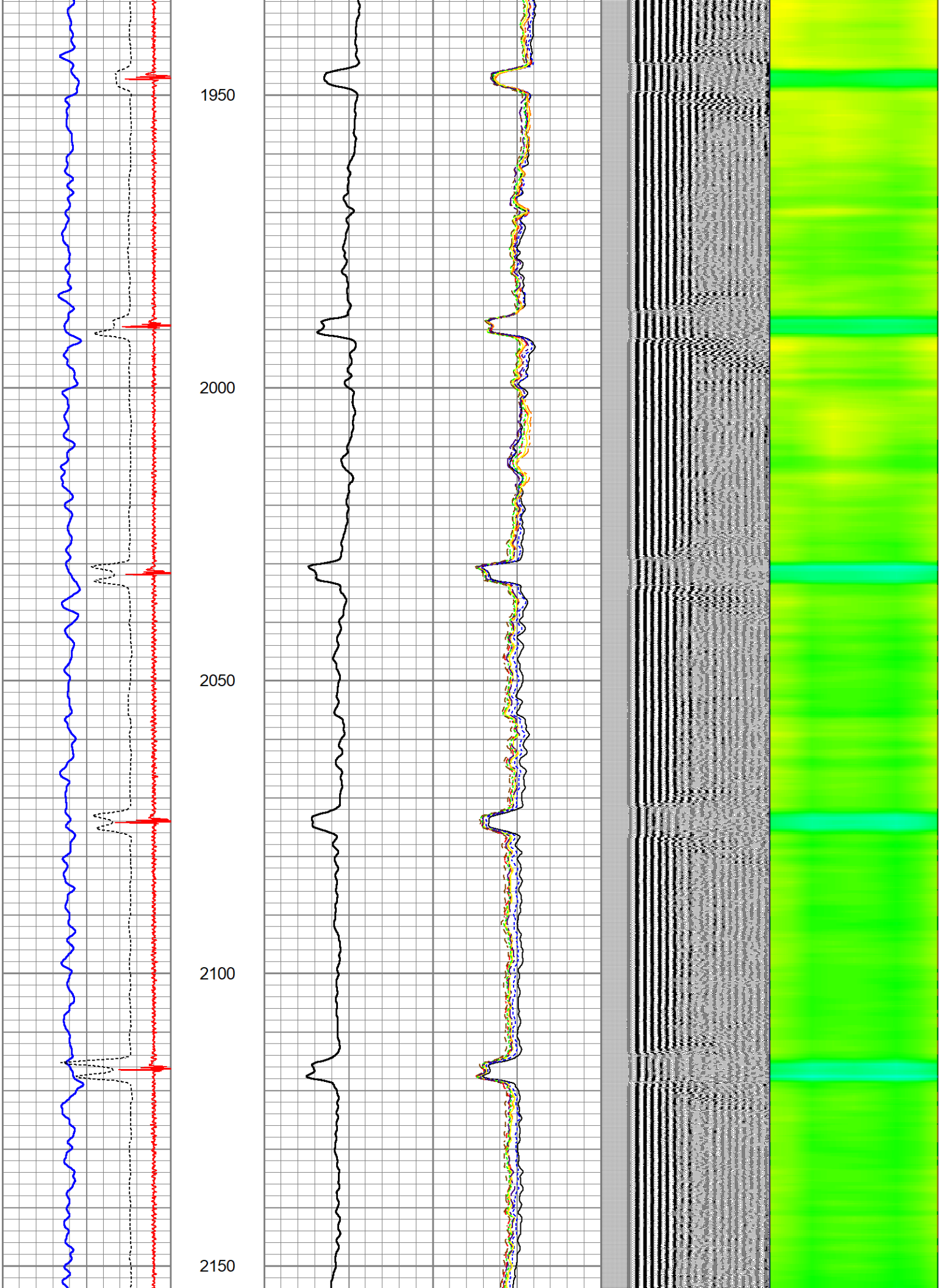
1400

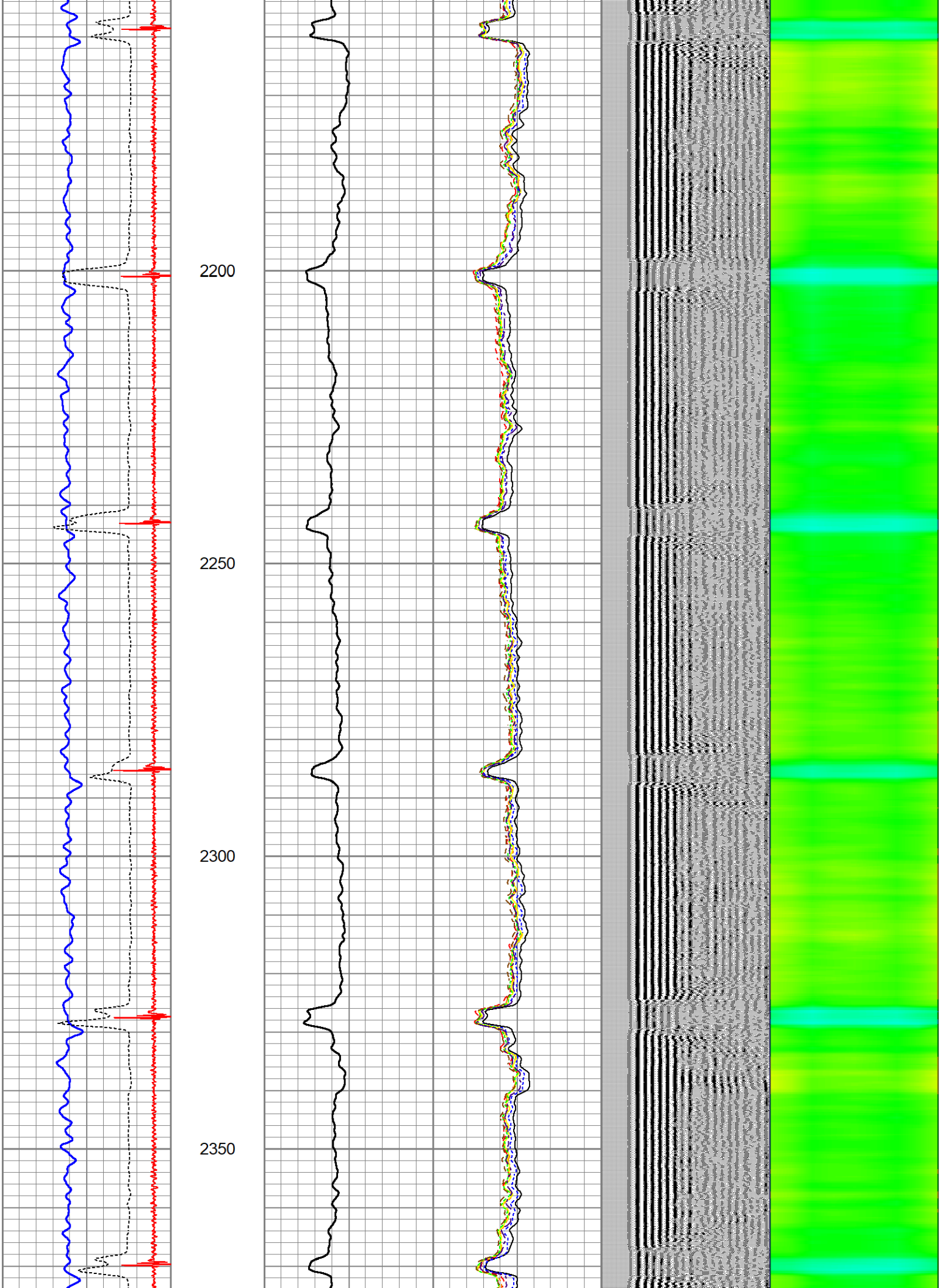
1450

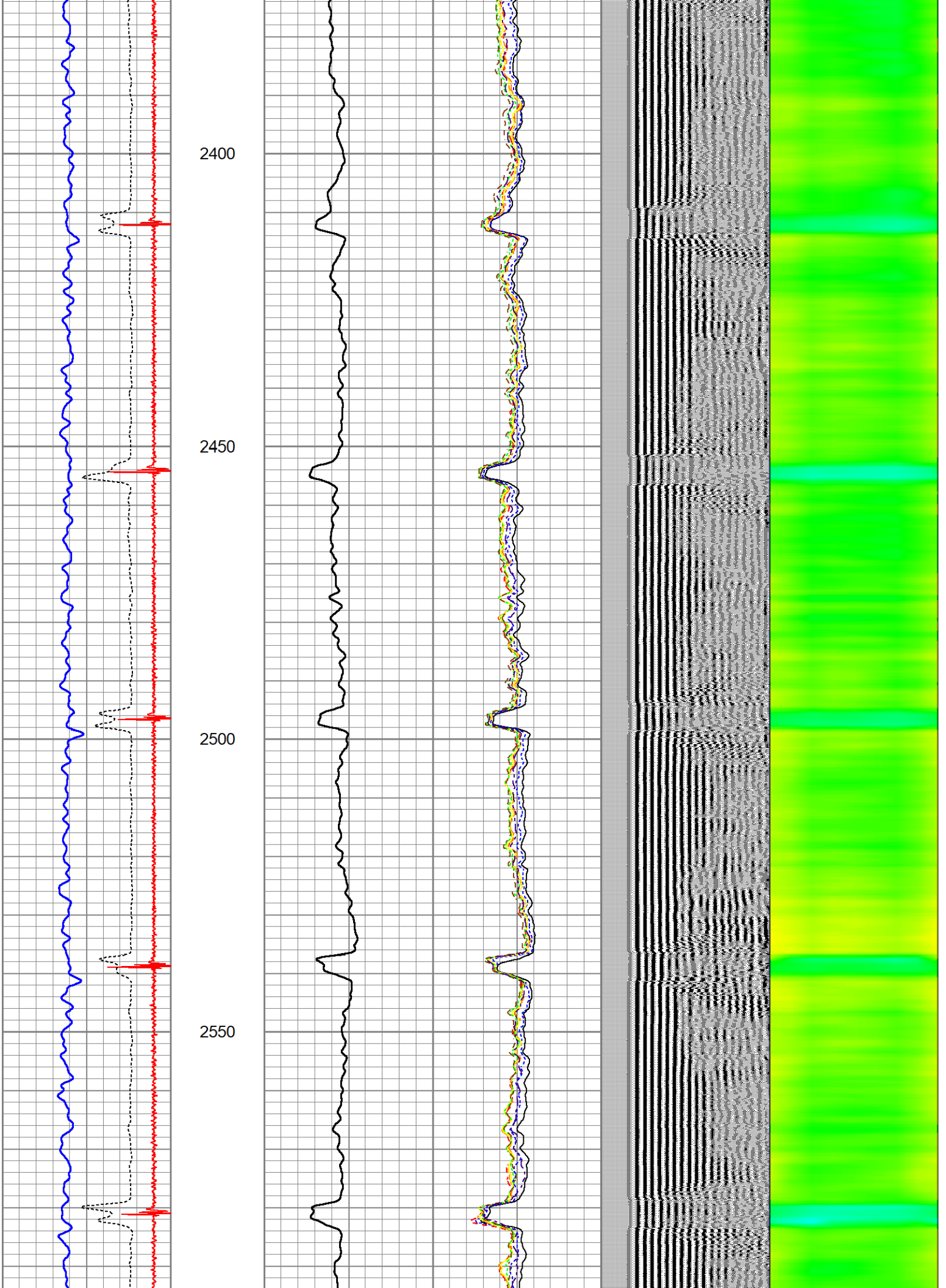












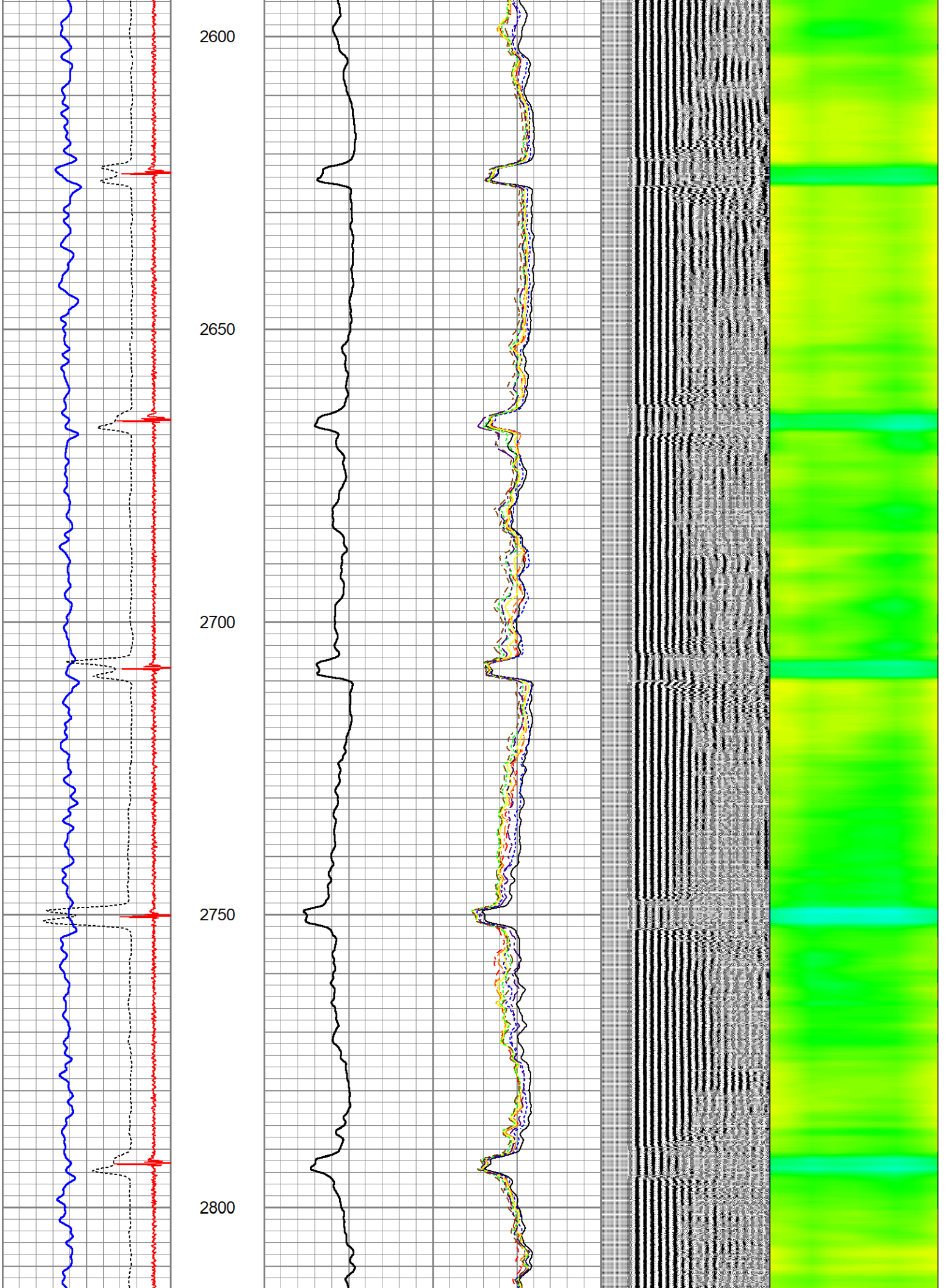
2600

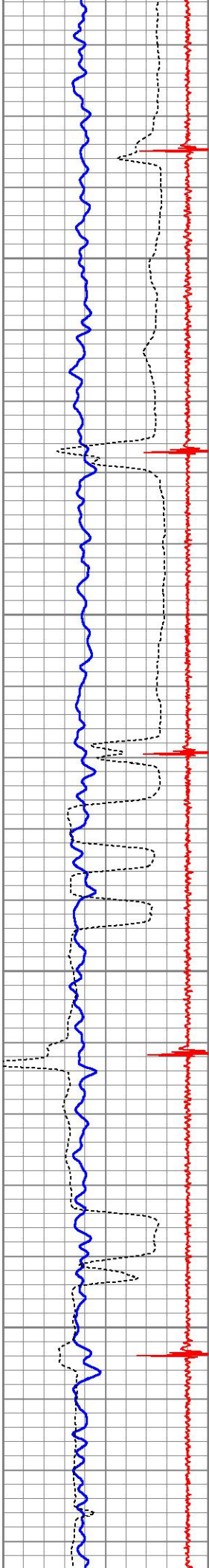
2650

2700

2750

2800



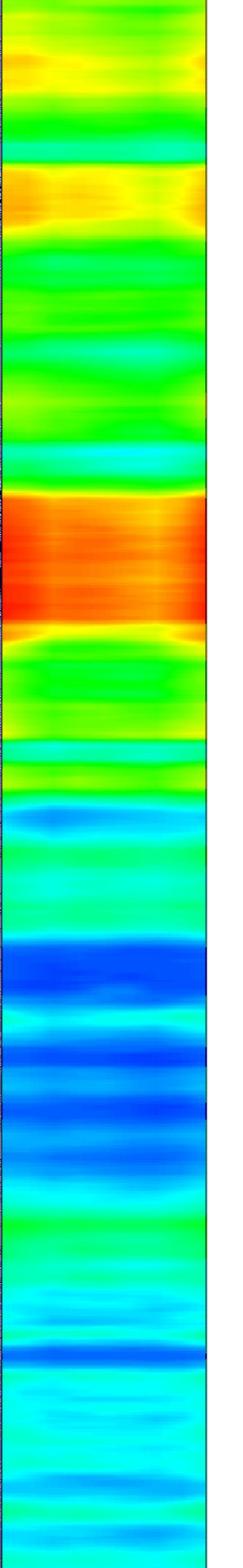
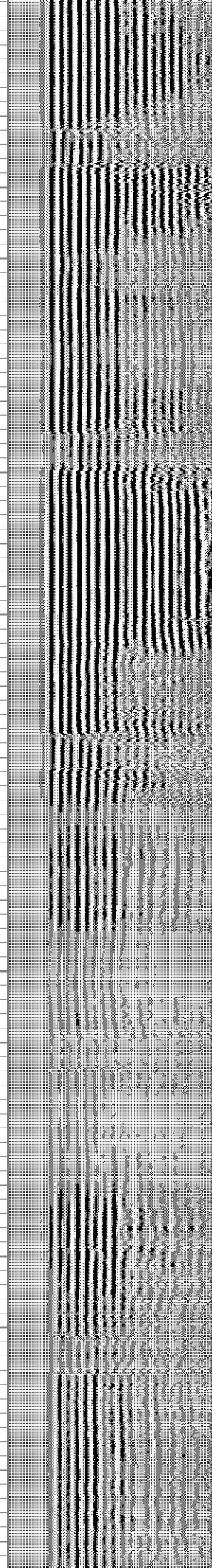
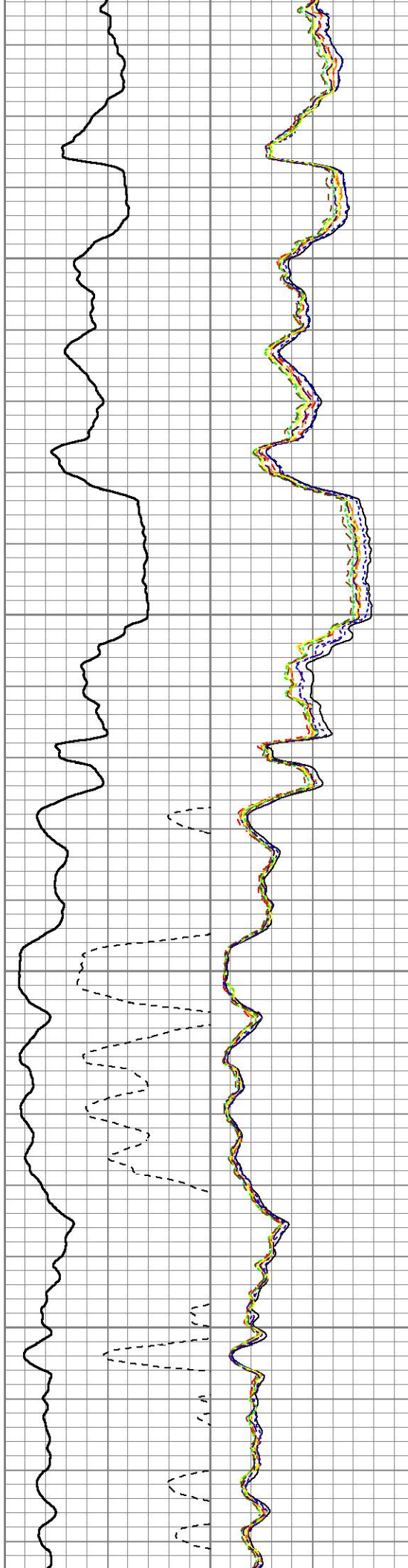


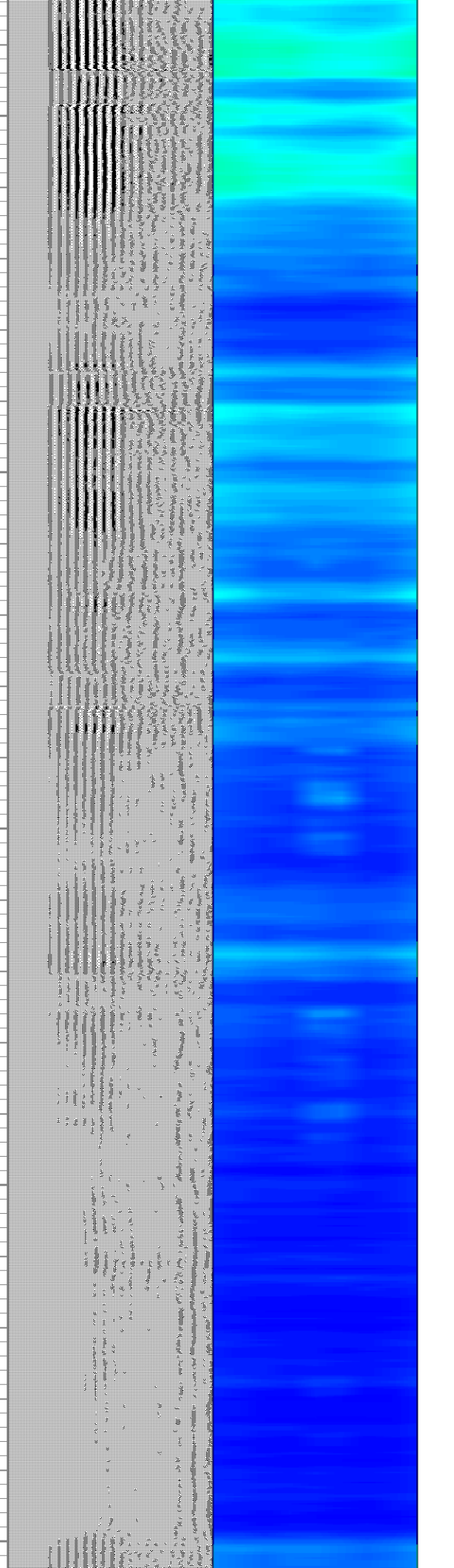
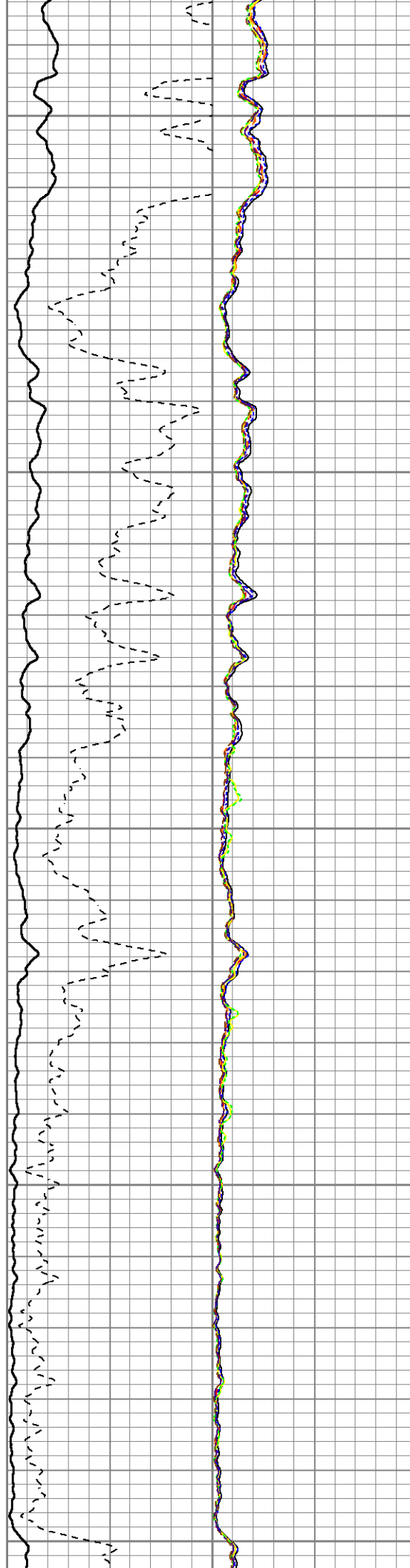
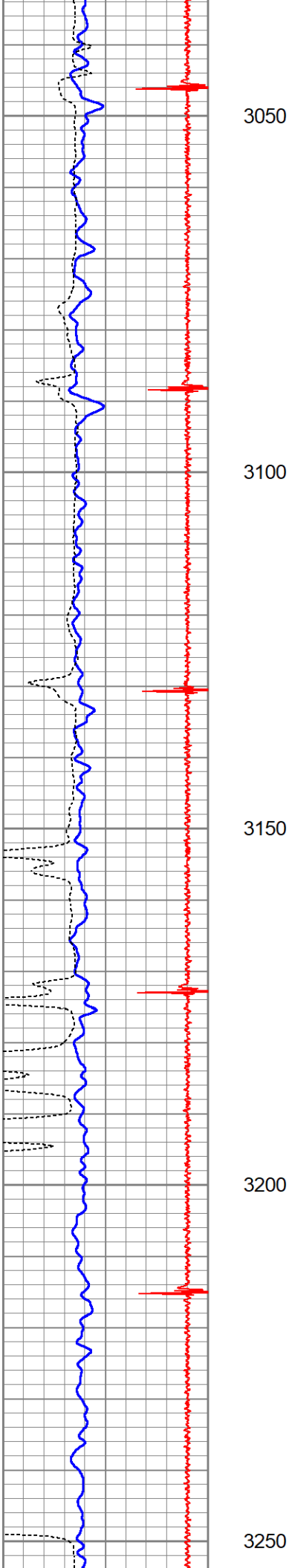
2850

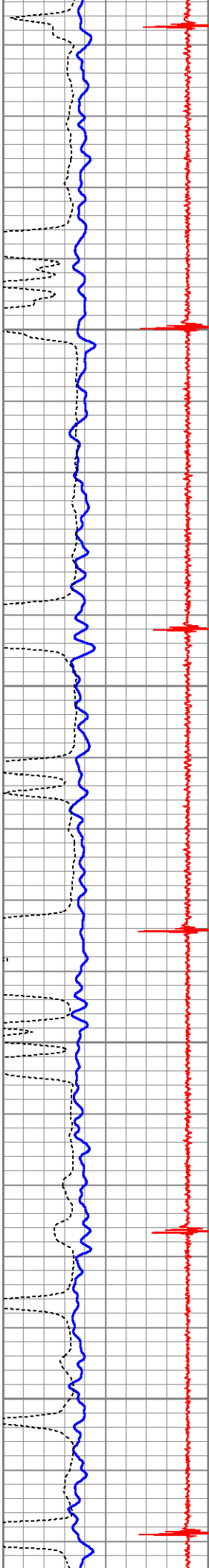
2900

2950

3000





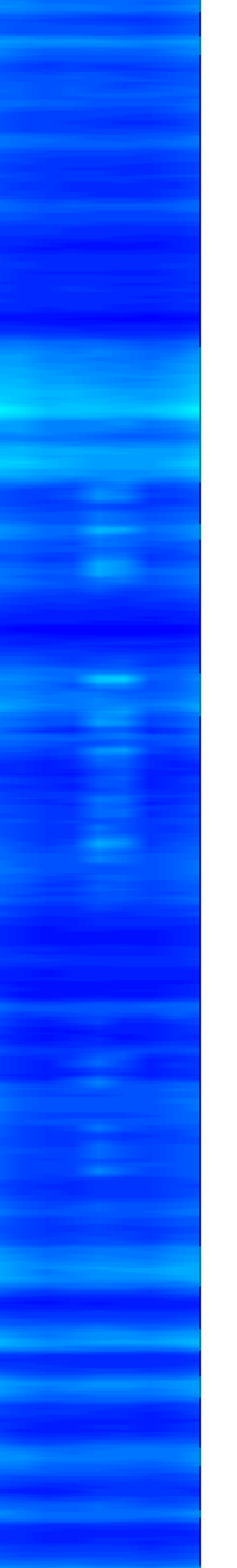
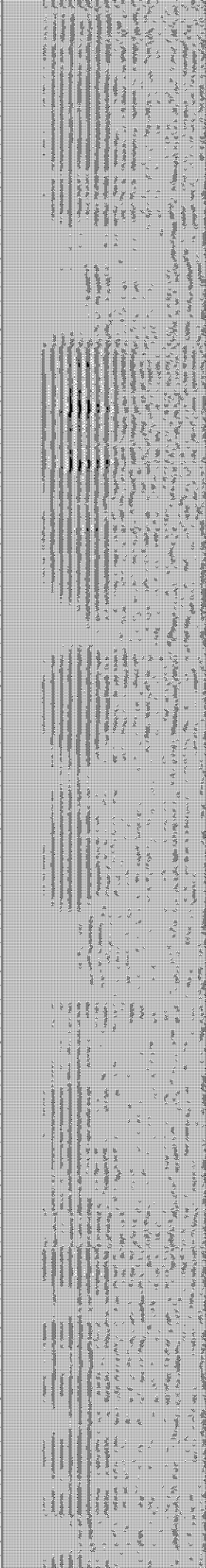
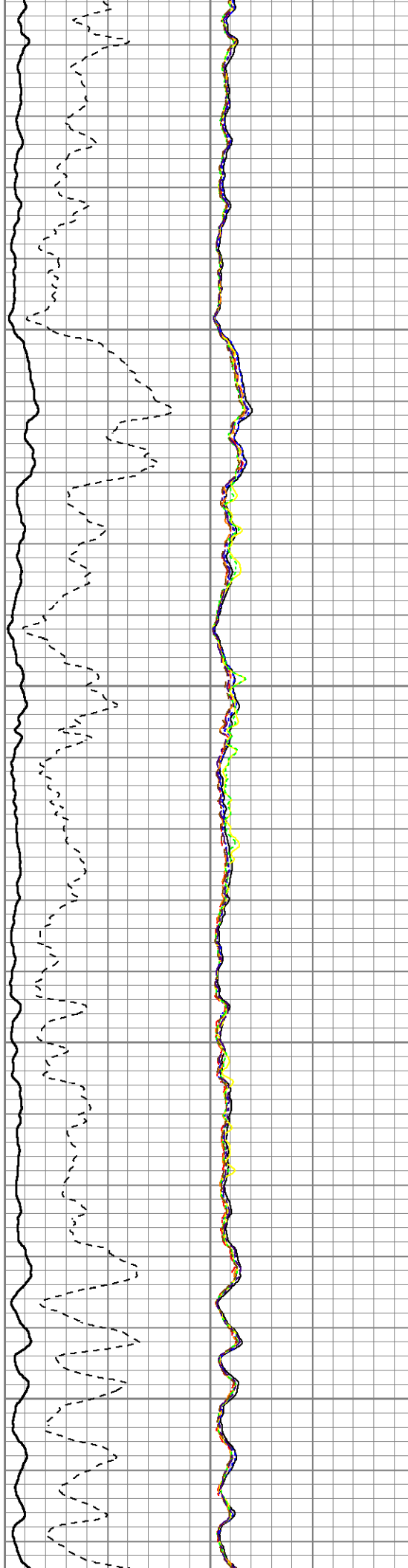


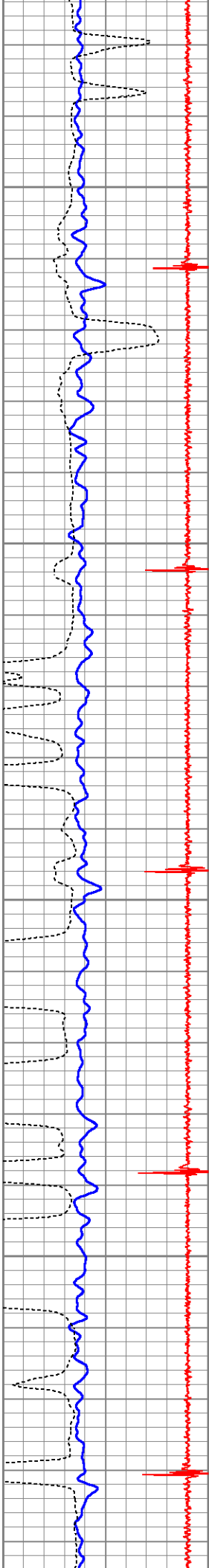
3300

3350

3400

3450



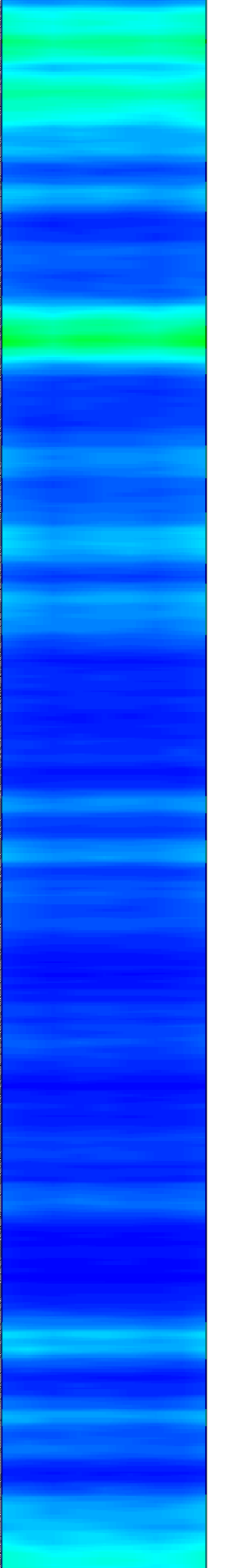
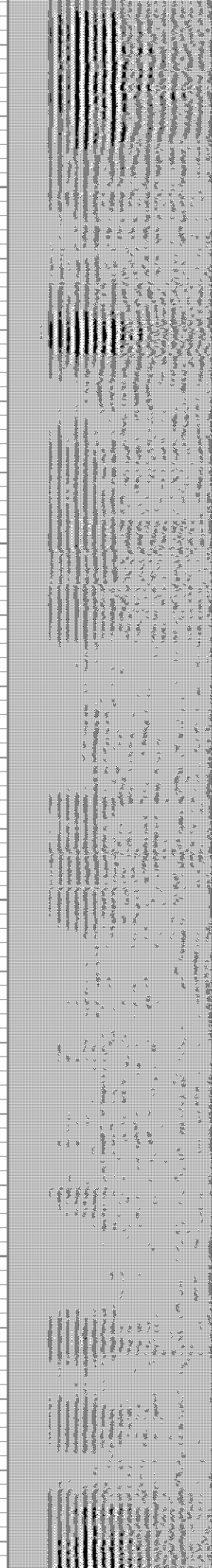
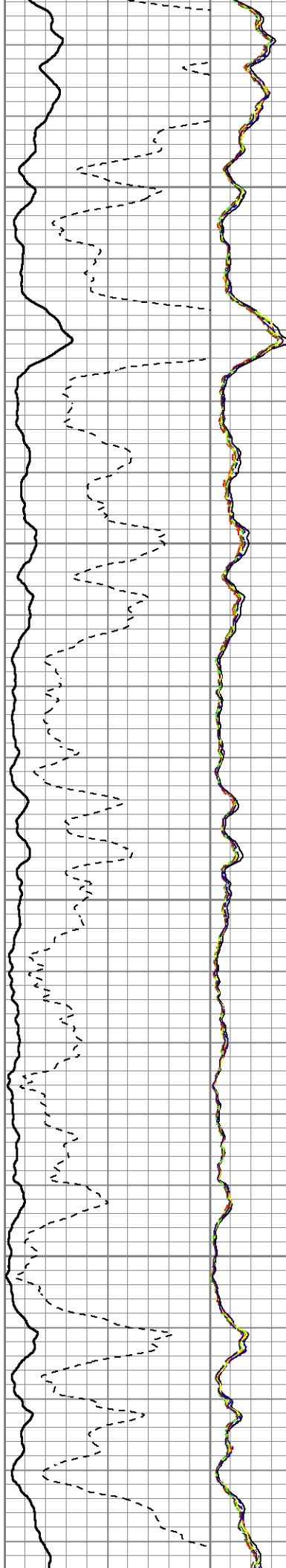


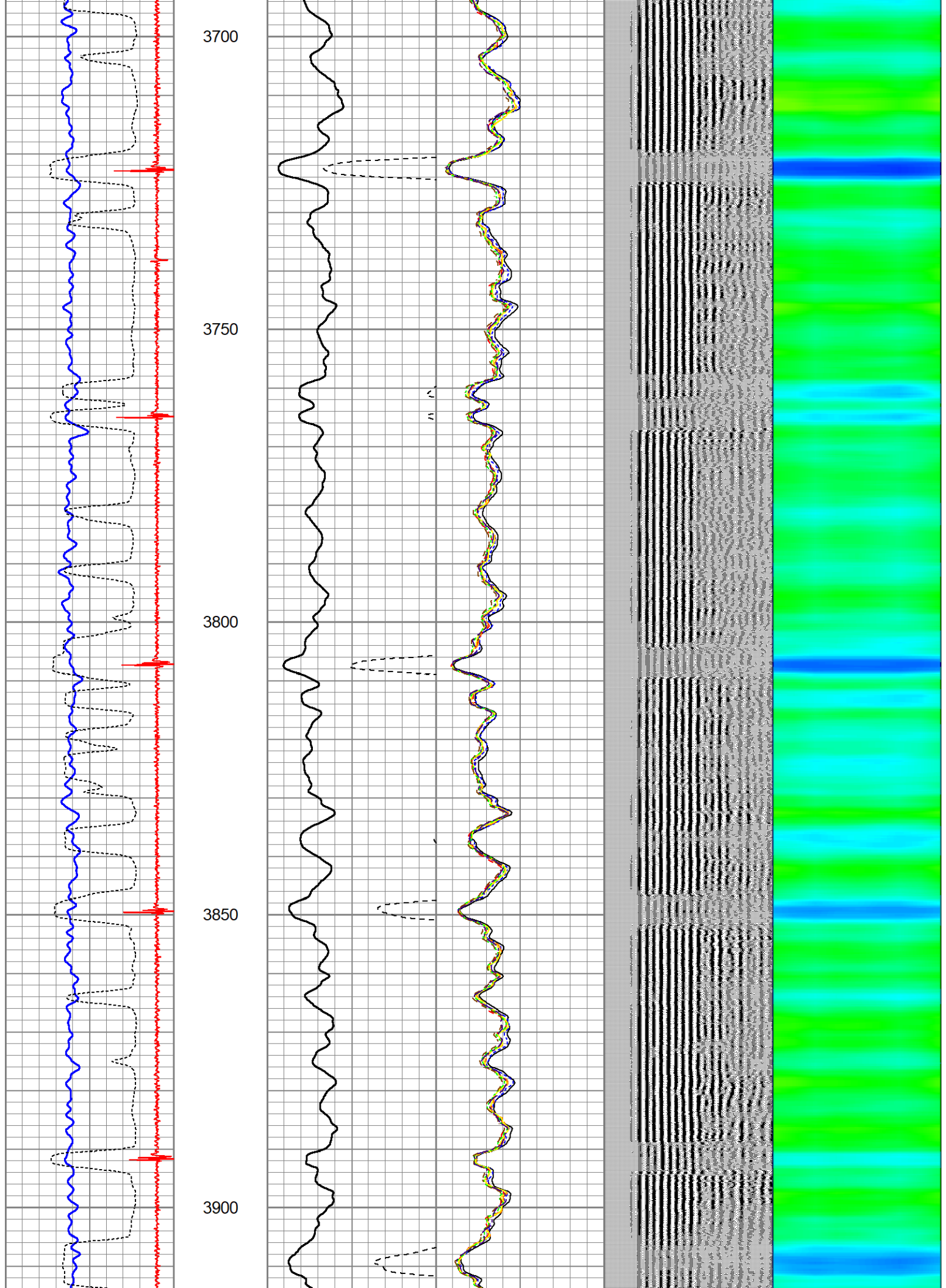
3500

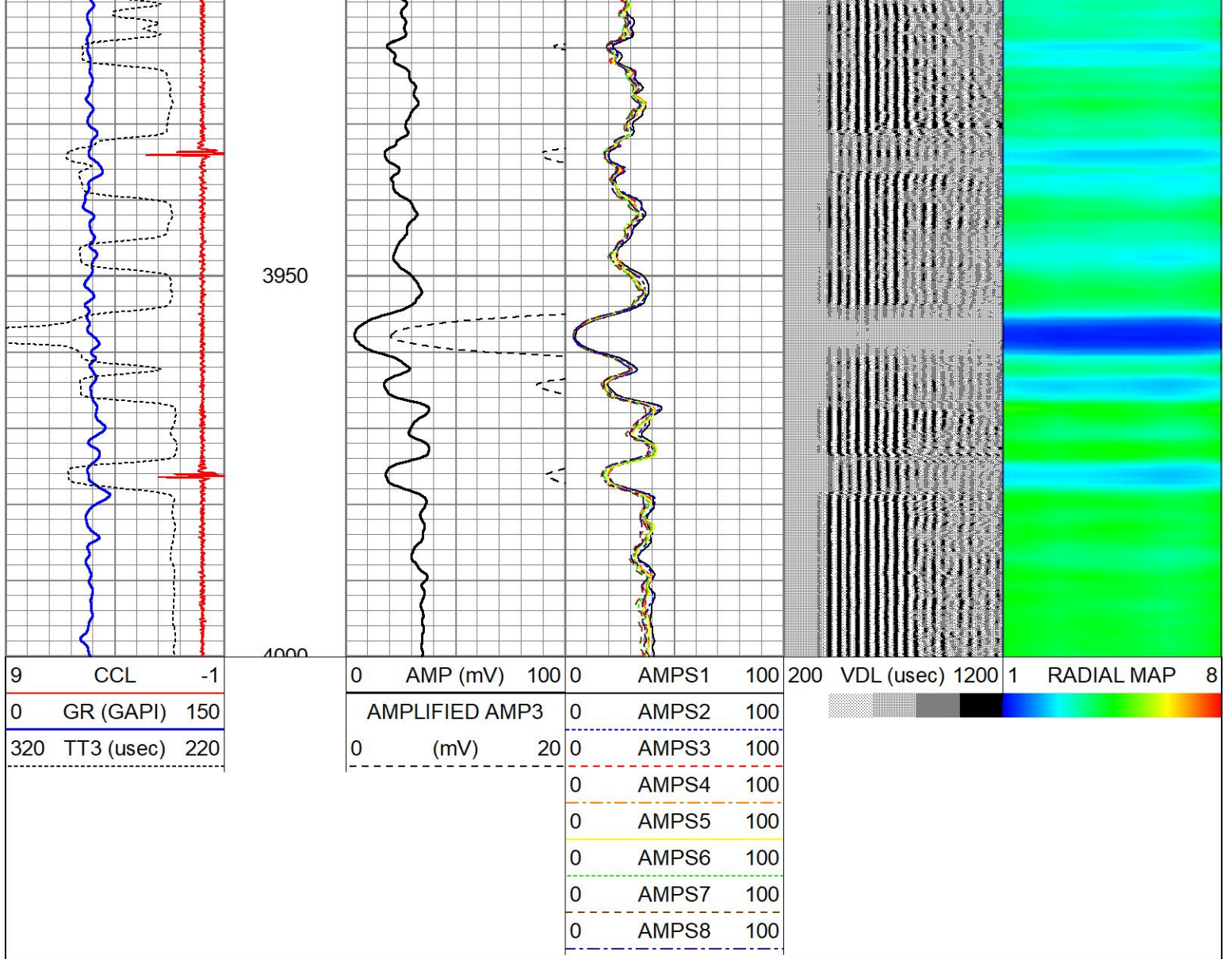
3550

3600

3650







### Calibration Report

Database File rasmussen23-29rcbl.db  
 Dataset Pathname pass4  
 Dataset Creation Wed Jun 12 15:48:05 2024

### Gamma Ray Calibration Report

Type / Serial: Probe275dig / 101010

#### SHOP CALIBRATION

Wed Aug 02 15:58:38 2023

	Counts/Sec.	Gain	Offset	Jig	Units
Background	0.0				cps
Calibrator	1.0				cps
		0.0500			GAPI/cps

#### PRIMARY VERIFICATION

Background	0.0				cps
Calibrator	0.0				cps
Difference				0.0	GAPI

#### BEFORE SURVEY VERIFICATION

Background	0.0				cps
Calibrator	0.0				cps
Difference				0.0	GAPI

AFTER SURVEY VERIFICATION

Background	0.0		cps
Calibrator	0.0		cps
Difference		0.0	GAPI

Segmented Cement Bond Log Calibration Report

Serial Number:	101020		
Tool Model:	Probe		
Calibration Casing Diameter:	4.500	in	
Calibration Depth:	1764.700	ft	

Master Calibration, performed Wed Jun 12 15:37:04 2024:

	Raw (v)		Calibrated (mv)		Results	
	Zero	Cal	Zero	Cal	Gain	Offset
3'	-0.006	0.663	0.700	81.196	120.228	1.440
CAL	-0.006	0.682				
5'	-0.006	0.442	0.700	81.196	179.450	1.797
SUM						
S1	-0.006	0.727	0.000	81.000	110.452	0.686
S2	-0.006	0.706	0.000	81.000	113.704	0.716
S3	-0.006	0.654	0.000	81.000	122.646	0.761
S4	-0.006	0.628	0.000	81.000	127.754	0.792
S5	-0.006	0.659	0.000	81.000	121.708	0.755
S6	-0.006	0.668	0.000	81.000	120.061	0.742
S7	-0.006	0.676	0.000	81.000	118.691	0.743
S8	-0.006	0.694	0.000	81.000	115.585	0.728

Internal Reference Calibration, performed Tue Feb 12 12:45:01 2013:

	Raw (v)		Calibrated (v)		Results	
	Zero	Cal	Zero	Cal	Gain	Offset
CAL	0.000	0.000	-0.006	0.682	1.000	0.000

Air Zero Calibration, performed Thu Feb 21 13:40:31 2013:

	Raw (v)		Calibrated (v)		Results	
	Zero		Zero		Offset	
3'	0.000		0.000			0.000
5'	0.000		0.000			0.000
SUM						
S1	0.000		0.000			0.000
S2	0.000		0.000			0.000
S3	0.000		0.000			0.000
S4	0.000		0.000			0.000
S5	0.000		0.000			0.000
S6	0.000		0.000			0.000
S7	0.000		0.000			0.000
S8	0.000		0.000			0.000