

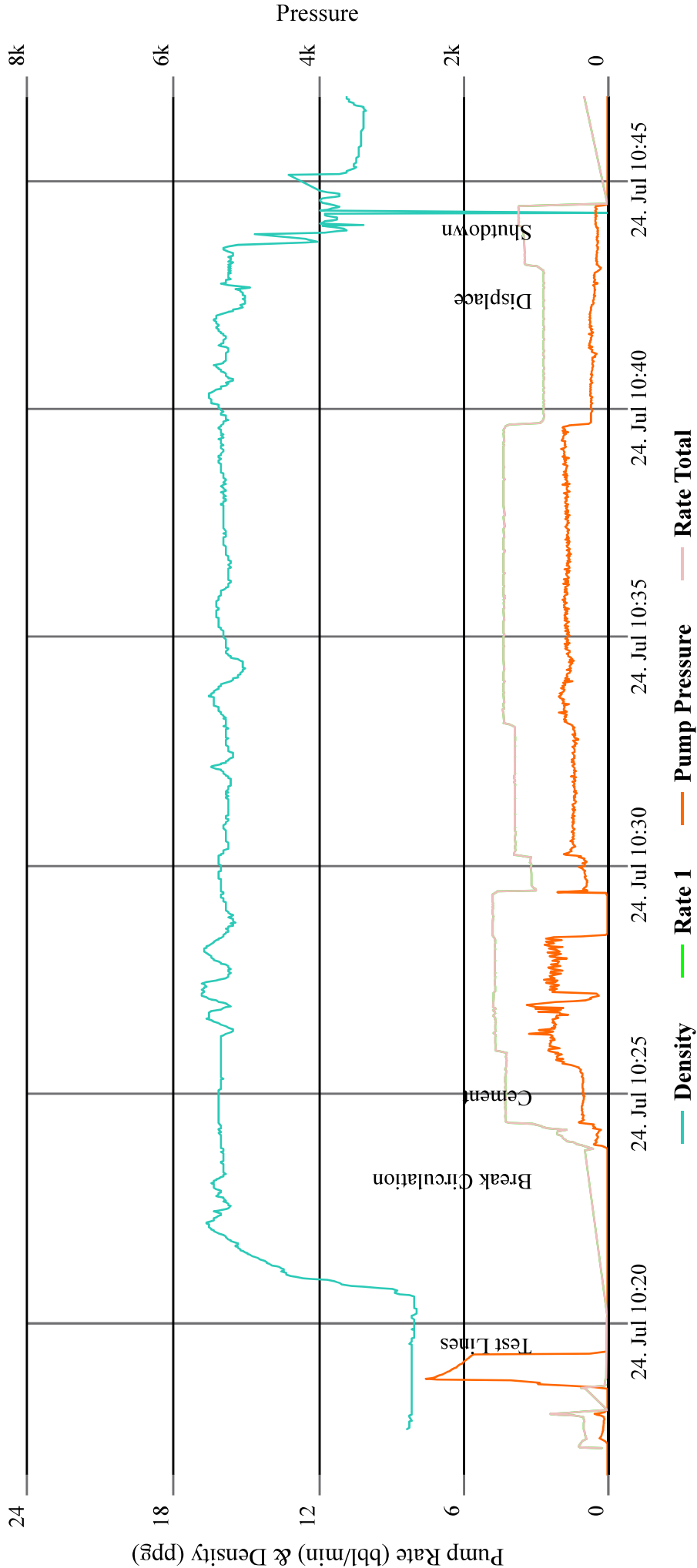


*Print* *Sign* *Date*

[illegible]

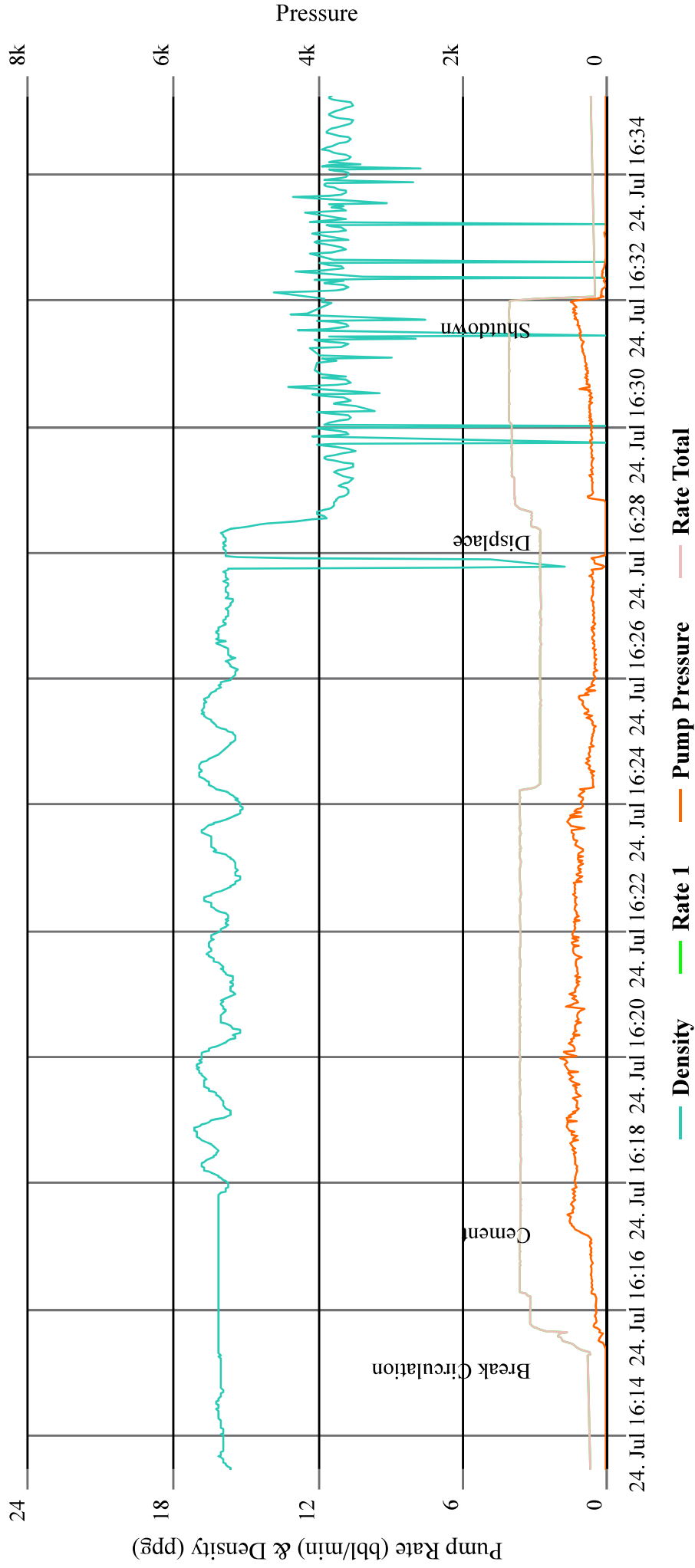
# WRIGHT 1 LOWER AGM PLUG @ 2,500'

CEMENTING



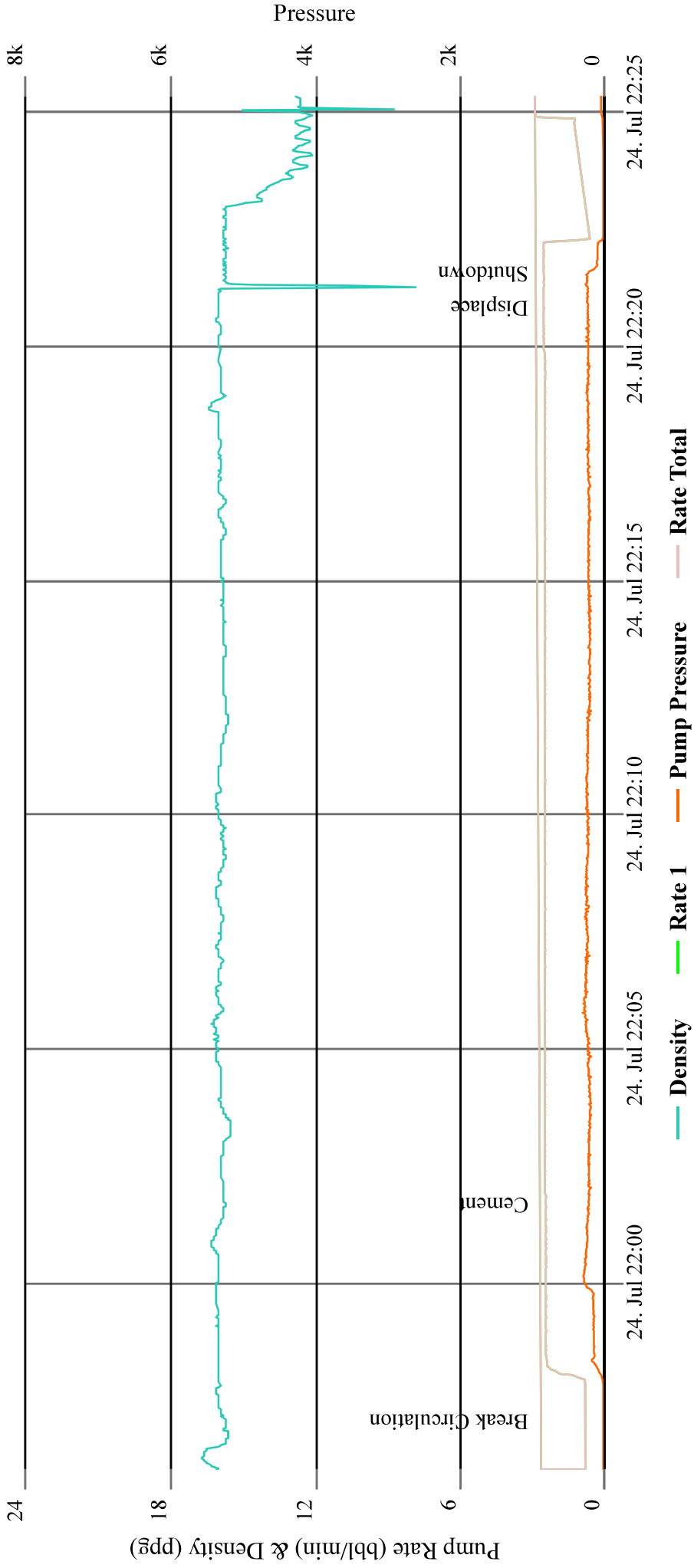
# WRIGHT 1 UPPER AGM PLUG @ 1,550'


CEMENTING

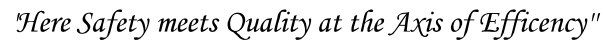


# WRIGHT 1 SURFACE AGM PLUG @ 758'

CEMENTING



		PO Box 329 Ft. Lupton, CO 80621 (303) 654-9202		"Here Safety Meets Quality at the Axis of Efficiency"					
Date of Service	Job Type	Customer	Consultant	Well Name		Last Tckt	Ticket #		
7/25/2024	Surface	OXY	Jeremy Duty	Wright-1		Yes	3663		
State	County	API		Rig		Operator			
Colorado	Weld	05-123-08906		Ensign 122		Anthony Archuletta			
Well Information				Water					
	Work String	Prod CSG	Surface	OH (I.D.)	Annular	Temp	80 °F		
OD & Weight	DP 4 1/2" 16.6#		8 5/8" 24#			PH	7		
bbl/ft Factor	0.01422	0	0.0636	0.0000		Chloride	1		
Length in ft	133		133			Well Description	Depth in Ft		
Capacity in bbls	1.89	0.00	8.46	0.00	0.00	EODP	133		
OD & Weight						TOC	Surface		
bbl/ft Factor	0	0	0	0.0000					
Length in ft									
Capacity in bbls	0.00	0.00	0.00	0.00	0.00				
OD & Weight									
bbl/ft Factor	0	0	0	0.0000					
Length in ft									
Capacity in bbls	0.00	0.00	0.00	0.00	0.00				
Buoyancy	0.76	Buoyancy	0.76	Buoyancy	0.76				
Lift Pressure	PRV	Lift Pressure	PRV	Lift Pressure	PRV				
106	0								
Drivers, Crew and Equipment Allocation									
Driver and Heavy Duty Equipment				Crew and Light Duty Equipment			Misc. Tools or Equipment		
Driver	Tractor	Trailer	Mileage	Crew	Equipment	Mileage	Required or Requested		
Fabian Guerrero	8402	P 3052		Anthony Archuletta	7476				
Manuel Vasquez		B 2884							
Total Heavy Duty Mileage			0	Total Light Duty Mileage		0			
Surface AGM		50	Sussex Blend		285	Niobrara Blend		285	
Class G 94lb/sk	4,700.0	Class G 94lb/sk	26,790	Class G 94lb/sk	26,790	Job Specific Remarks Customer ordered 285sks of Sussex and 285sks of Niobara blend Charged 50% of unused mixed blends due to rig not able to get to depth.			
CaCL2	94.0	CaCL2	-	CaCL2	-				
Gypsum	188.0	Gypsum	536	Gypsum	-				
RFL-1 (latex)	18.8	RFL-1 (latex)	-	RFL-1 (latex)	-				
Defoamer	14.1	Defoamer	80	Defoamer	80				
RFL-70X(Latex)	-	RFL-70X(Latex)	107	RFL-70X(Latex)	107				
RFL-9(Fluid Loss)	-	RFL-9(Fluid Loss)	67	RFL-9(Fluid Loss)	67				
RCD-3(Dispersant)	-	RCD-3(Dispersant)	80	RCD-3(Dispersant)	40				
RCR-201(Retarder)	-	RCR-201(Retarder)	-	RCR-201(Retarder)	27				
PreMag	-	PreMag	-	PreMag	-				
THIX-C2	-	THIX-C2	-	THIX-C2	-				
Silica Flour	-	Silica Flour	-	Silica Flour	9,377				
Desc	Qty	Rate	Total	Desc	Qty			Rate	Total
Class G 94lb/sk	50								
CaCL2	94.00								
Gypsum	188.0								
RFL-1 (latex)	19.0								
Defoamer	15.0								
Sugar	50.00								
Alpha	1.00								
Pump & Bulk/Hour	2.00								
Discounted Hourly Rate	6.00								
Bulk Material Blending	3.00								
Bulk Material Delivery	1.00								
Print		Sign		Date					



<i>Print</i>	<i>Sign</i>	<i>Date</i>	Date of service	7/25/2024
			Ticket total	\$19,974.94

# WRIGHT 1 SURFACE AGM PLUG @ 133'

