

**Antler Energy LLC  
Pole Gulch Unit 2  
Location ID: 313420**



**Debris**



**Unlabeled. Open to wildlife.**

**Antler Energy LLC  
Pole Gulch Unit 2  
Location ID: 313420**



**No well sign. On the ground.**



**Well sign debris**

**Antler Energy LLC  
Pole Gulch Unit 2  
Location ID: 313420**



**Debris**



**No secondary containment**

**Antler Energy LLC  
Pole Gulch Unit 2  
Location ID: 313420**



**Debris**



**Debris**

**Antler Energy LLC  
Pole Gulch Unit 2  
Location ID: 313420**

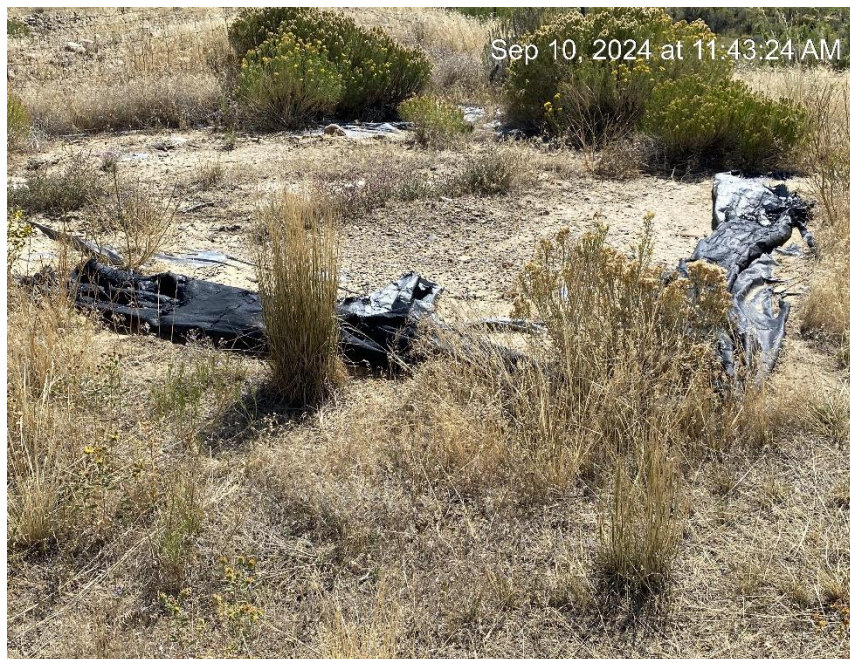


**Debris**



**Open to wildlife**

**Antler Energy LLC  
Pole Gulch Unit 2  
Location ID: 313420**



**Debris**



**Unregistered pit**

**Antler Energy LLC  
Pole Gulch Unit 2  
Location ID: 313420**



**Debris**



**Open to wildlife**

**Antler Energy LLC  
Pole Gulch Unit 2  
Location ID: 313420**



**Debris**



**Unlabeled tank**

**Antler Energy LLC  
Pole Gulch Unit 2  
Location ID: 313420**



**Staining. Open to wildlife.**



**Tank missing required information**

**Antler Energy LLC  
Pole Gulch Unit 2  
Location ID: 313420**



**Debris**

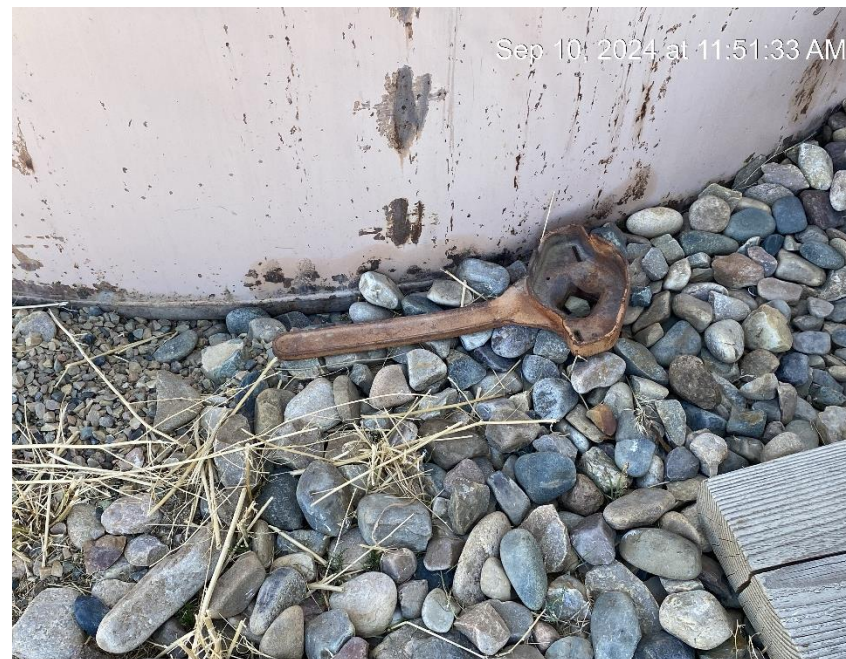


**Open end load line**

**Antler Energy LLC  
Pole Gulch Unit 2  
Location ID: 313420**



**Staining**



**Debris**

Antler Energy LLC  
Pole Gulch Unit 2  
Location ID: 313420

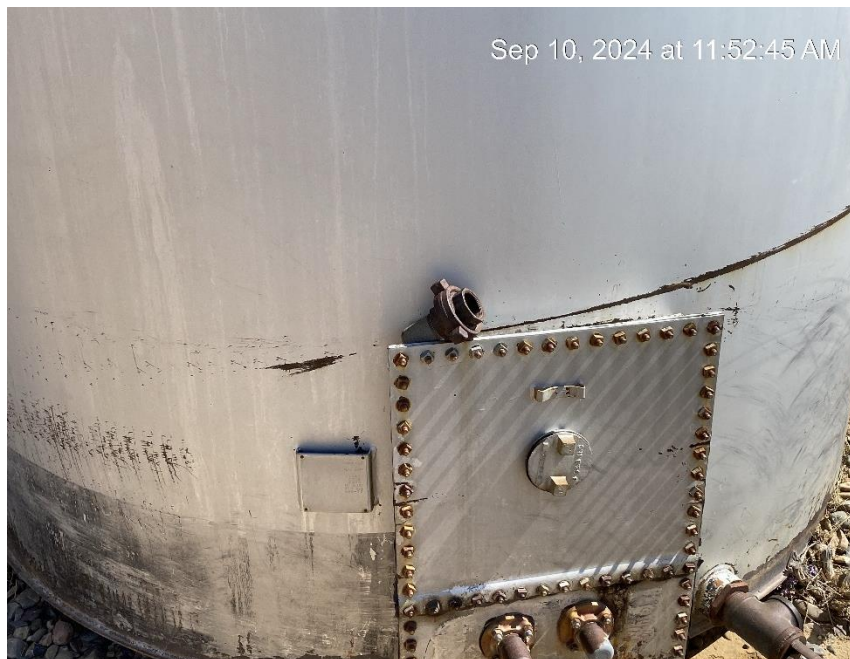


Debris. Staining.



Tank missing required information

**Antler Energy LLC  
Pole Gulch Unit 2  
Location ID: 313420**



**Debris**



**Debris**

**Antler Energy LLC  
Pole Gulch Unit 2  
Location ID: 313420**



**Debris**



**Debris**

**Antler Energy LLC  
Pole Gulch Unit 2  
Location ID: 313420**



Sep 10, 2024 at 11:38:39 AM



Sep 10, 2024 at 11:44:37 AM

**Location from Northwest corner**

**Location from Northeast corner**

**Antler Energy LLC  
Pole Gulch Unit 2  
Location ID: 313420**



**Location from Southeast corner**



**Location from Southwest corner**