

PO Box 329

Ft. Lupton, CO 80621
(303) 654-9202

"Here Safety Meets Quality at the Axis of Efficiency"

Date of Service	Job Type	Customer	Consultant	Well Name	Last Tckt	Ticket #	
7/17/2024	Balance Plug	OXY	Jeremy Duty	Oscar & Jennie Berglund 1	No	3626	
State	County	API	Rig	Operator			
Colorado	Weld	05-123-08627	Ensign 122	Alexander Pomales			
Well Information						Water	
	Work String	Prod CSG	Surface	OH (I.D.)	Annular	Temp	70 °F
OD & Weight	DP 4 1/2" 16.6#			7.875		PH	7
bbl/ft Factor	0.01422	0	0	0.0602		Chloride	.6ppm
Length in ft	6550			1281		Well Description	Depth in Ft
Capacity in bbls	93.14	0.00	0.00	77.17	0.00	TOC	5,269
OD & Weight						EOP	6,550
bbl/ft Factor	0	0	0	0.0000			
Length in ft							
Capacity in bbls	0.00	0.00	0.00	0.00	0.00		
OD & Weight							
bbl/ft Factor	0	0	0	0.0000			
Length in ft							
Capacity in bbls	0.00	0.00	0.00	0.00	0.00		
Buoyancy	0.76	Buoyancy	0.76	Buoyancy	0.76		
Lift Pressure	PRV	Lift Pressure	PRV	Lift Pressure	PRV		
5196	3750						

Drivers, Crew and Equipment Allocation

Driver and Heavy Duty Equipment				Crew and Light Duty Equipment			Misc. Tools or Equipment
Driver	Tractor	Trailer	Mileage	Crew	Equipment	Mileage	Required or Requested
Alexander Pomales	90530			Jonathon Rhamy	7490		
Kyle Carr	5481	B 2359					
Bret Wade	8108	B 2321					
Total Heavy Duty Mileage			0	Total Light Duty Mileage		0	

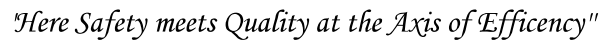
Niobrara Blend		285	Blend		0	Blend		0	Job Specific Remarks
Class G 94lb/sk		26,790.0	Class G 94lb/sk		-	Class G 94lb/sk		-	
CaCL2		-	CaCL2		-	CaCL2		-	
Gypsum		-	Gypsum		-	Gypsum		-	
RFL-1 (latex)		-	RFL-1 (latex)		-	RFL-1 (latex)		-	
Defoamer		80.4	Defoamer		-	Defoamer		-	
RFL-70X(Latex)		107.2	RFL-70X(Latex)		-	RFL-70X(Latex)		-	
RFL-9(Fluid Loss)		67.0	RFL-9(Fluid Loss)		-	RFL-9(Fluid Loss)		-	
RCD-3(Dispersant)		40.2	RCD-3(Dispersant)		-	RCD-3(Dispersant)		-	
RCR-201(Retarder)		26.8	RCR-201(Retarder)		-	RCR-201(Retarder)		-	
PreMag		-	PreMag		-	PreMag		-	
THIX-C2		-	THIX-C2		-	THIX-C2		-	
Silica Flour		9,376.5	Silica Flour		-	Silica Flour		-	

Desc	Qty	Rate	Total	Desc	Qty	Rate	Total
Class G 94lb/sk	285						
Defoamer	81.00						
RFL-70X(Latex)	108.0						
RFL-9(Fluid Loss)	67.0						
RCD-3(Dispersant)	41.0						
RCR-201(Retarder)	27.0						
Silica Flour	9377.0						
Sugar	50.00						
Alpha	1.00						
Pump & Bulk/Hour	2.00						
Data Recording	1.00						
Bulk Material Blending	1.00						
Bulk Material Delivery	1.00						

Print

sign

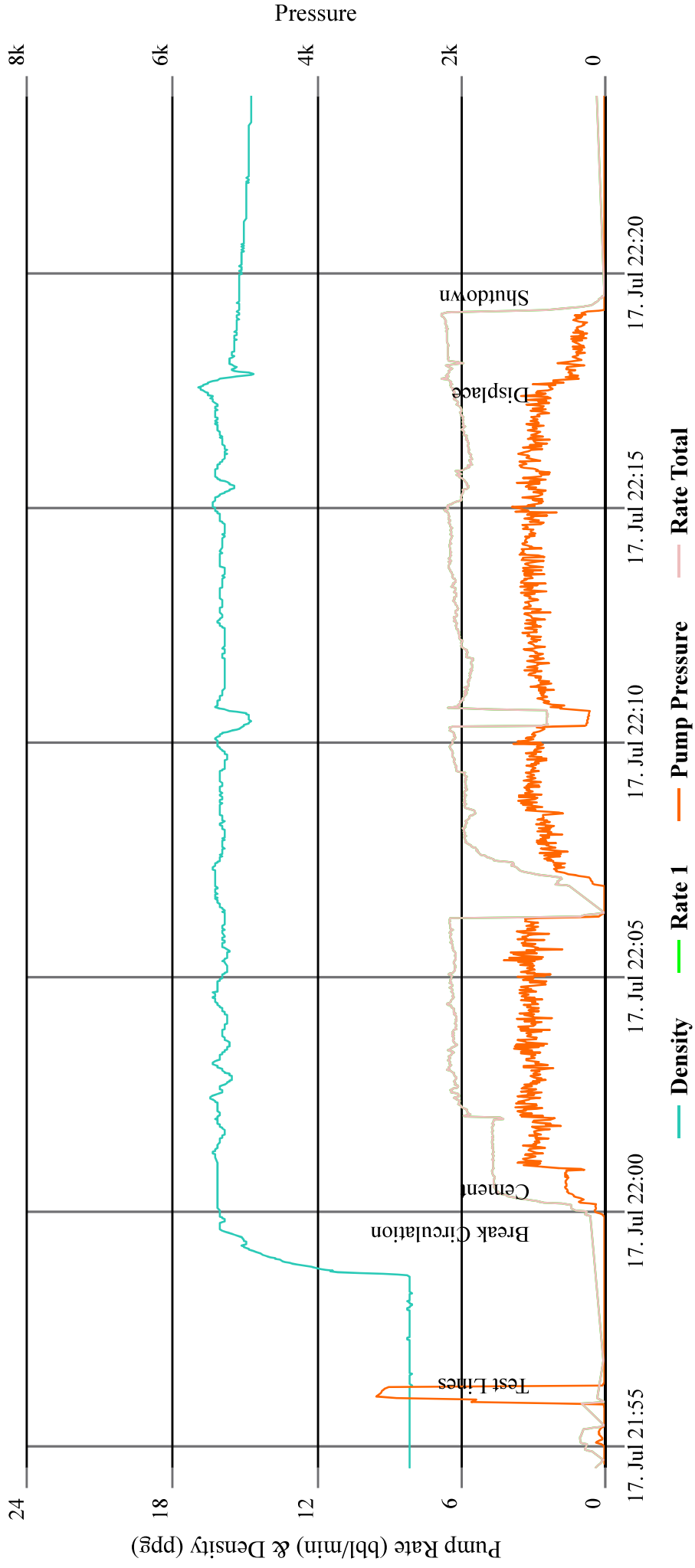
Uqte



<i>Print</i>	<i>Sign</i>	<i>Date</i>	Date of service	7/17/2024
			Ticket total	\$19,172.75

OSCAR & JENNIE BERGLUND 1 NIOBRARA PLUG @ 6,550'

CEMENTING



PO Box 329

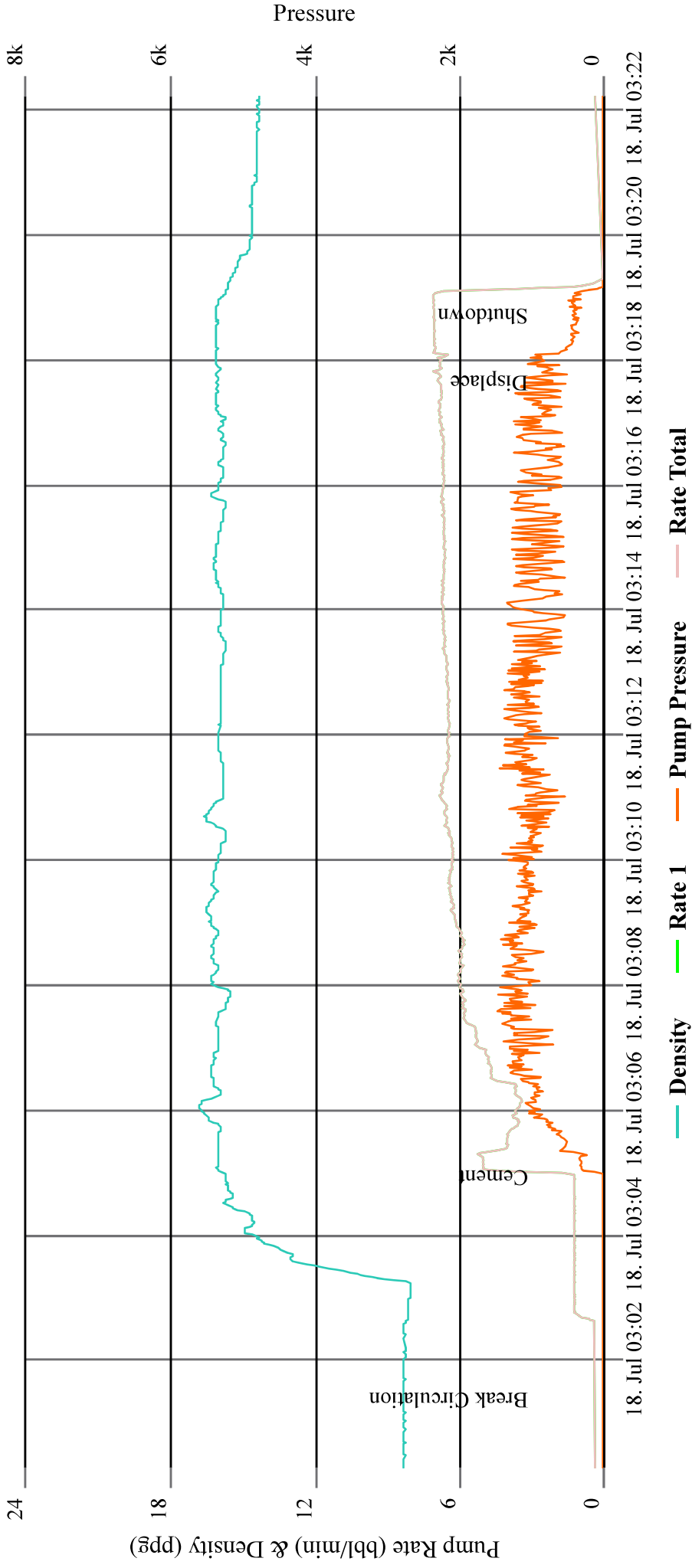
**Ft. Lupton, CO 80621
(303) 654-9202**

"Here Safety Meets Quality at the Axis of Efficiency"

Date of Service		Job Type	Customer	Consultant	Well Name		Last Tckt	Ticket #	
7/18/2024		Balance Plug	OXY	Isaac Rulla	Oscar & Jennie Berglund 1		No	3627	
State	County	API			Rig		Operator		
Colorado	Weld	05-123-08627			Ensign 122		Alexander Pomaes		
Well Information							Water		
	Work String	Prod CSG	Surface	OH (I.D.)	Annular	Temp	70 °F		
	DP 4 1/2" 16.6#			7.875		PH	7		
bbl/ft Factor	0.01422	0	0	0.0602		Chloride	.6ppm		
Length in ft	4575			986		Well Description	Depth in Ft		
Capacity in bbls	65.06	0.00	0.00	59.40	0.00	TOC	3,589		
OD & Weight	DP 4 1/2" 16.6#			7.875		EOP	4,575		
bbl/ft Factor	0.01422	0	0	0.0602					
Length in ft	2500			1012		TOC	1,488		
Capacity in bbls	35.55	0.00	0.00	60.97	0.00	EOP	2,500		
OD & Weight	DP 4 1/2" 16.6#			7.875					
bbl/ft Factor	0.01422	0	0	0.0602		TOC	738		
Length in ft	1750			1012		EOP	1,750		
Capacity in bbls	24.89	0.00	0.00	60.97	0.00				
Buoyancy	0.76	Buoyancy	0.76	Buoyancy	0.76				
Lift Pressure	PRV	Lift Pressure	PRV	Lift Pressure	PRV				
3629	2500	1983	1500	1388	1000				
Drivers, Crew and Equipment Allocation									
Driver and Heavy Duty Equipment				Crew and Light Duty Equipment			Misc. Tools or Equipment		
Driver	Tractor	Trailer	Mileage	Crew	Equipment	Mileage	Required or Requested		
Alexander Pomaes	90530			Jonathon Rhamy	7490				
Kyle Carr	5481	B 2321							
Bret Wade	1858								
Total Heavy Duty Mileage			0	Total Light Duty Mileage			0		
Sussex Blend		285	Lower AGM	285	Upper AGM	285	Job Specific Remarks		
Class G 94lb/sk	26,790.0		Class G 94lb/sk	26,790	Class G 94lb/sk	26,790			
CaCL2	-		CaCL2	268	CaCL2	402			
Gypsum	535.8		Gypsum	1,072	Gypsum	1,072			
RFL-1 (latex)	-		RFL-1 (latex)	107	RFL-1 (latex)	107			
Defoamer	80.4		Defoamer	80	Defoamer	80			
RFL-70X(Latex)	107.2		RFL-70X(Latex)	-	RFL-70X(Latex)	-			
RFL-9(Fluid Loss)	67.0		RFL-9(Fluid Loss)	-	RFL-9(Fluid Loss)	-			
RCD-3(Dispersant)	80.4		RCD-3(Dispersant)	-	RCD-3(Dispersant)	-			
RCR-201(Retarder)	-		RCR-201(Retarder)	-	RCR-201(Retarder)	-			
PreMag	-		PreMag	-	PreMag	-			
THIX-C2	-		THIX-C2	-	THIX-C2	-			
Silica Flour	-		Silica Flour	-	Silica Flour	-			
Desc	Qty	Rate	Total	Desc	Qty	Rate			Total
Class G 94lb/sk	285								
Gypsum	536.00								
Defoamer	81.0								
RFL-70X(Latex)	108.0								
RFL-9(Fluid Loss)	67.0								
RCD-3(Dispersant)	81.0								
Sugar	150.00								
Alpha	3.00								
Pump & Bulk/Hour	2.00								
Add'l Bulk	3.00								
Bulk Material Blending	3.00								
Bulk Material Delivery	3.00								
Print		Sign		Date					

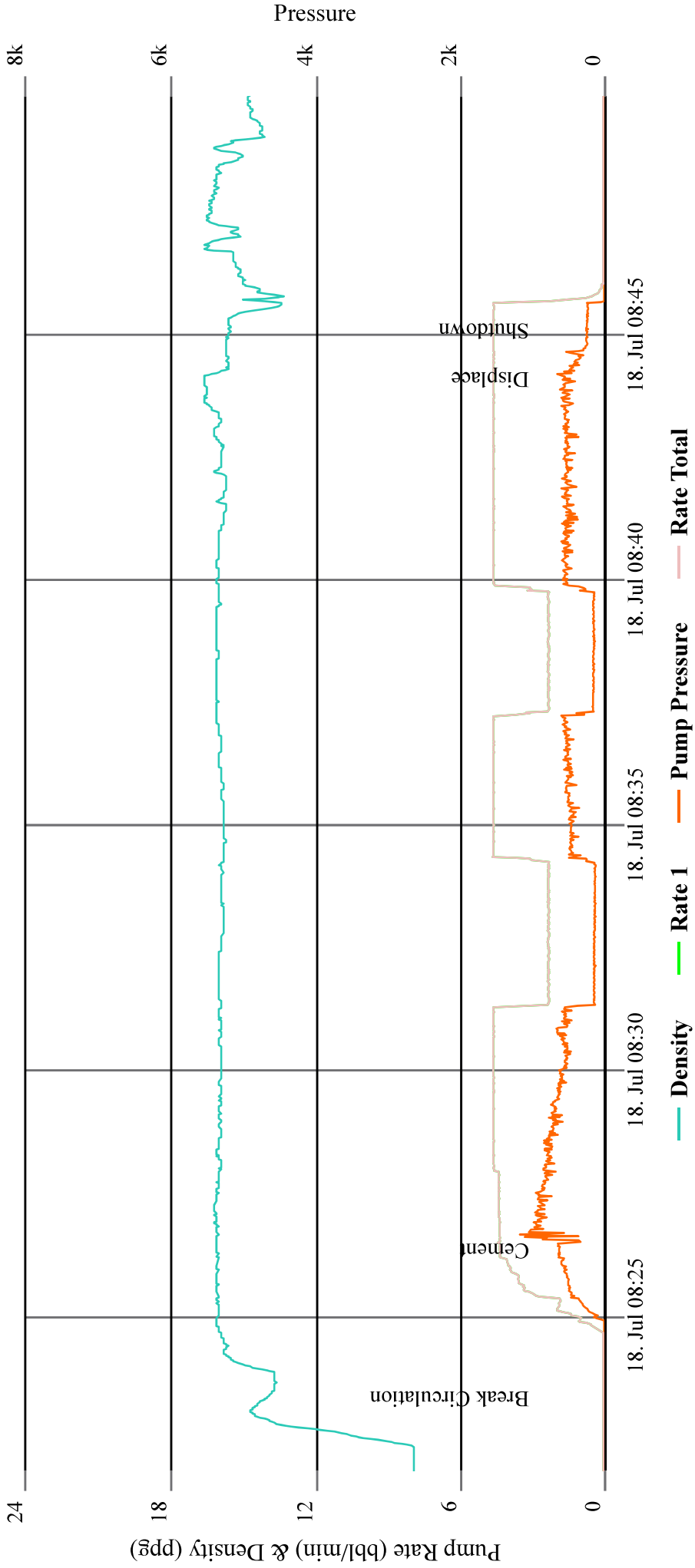
OSCAR & JENNIE BERGLUND 1 SUSSEX PLUG @ 4,575'

CEMENTING



OSCAR & JENNIE BERGLUND 1 LOWER AGM PLUG @ 2,500'

CEMENTING



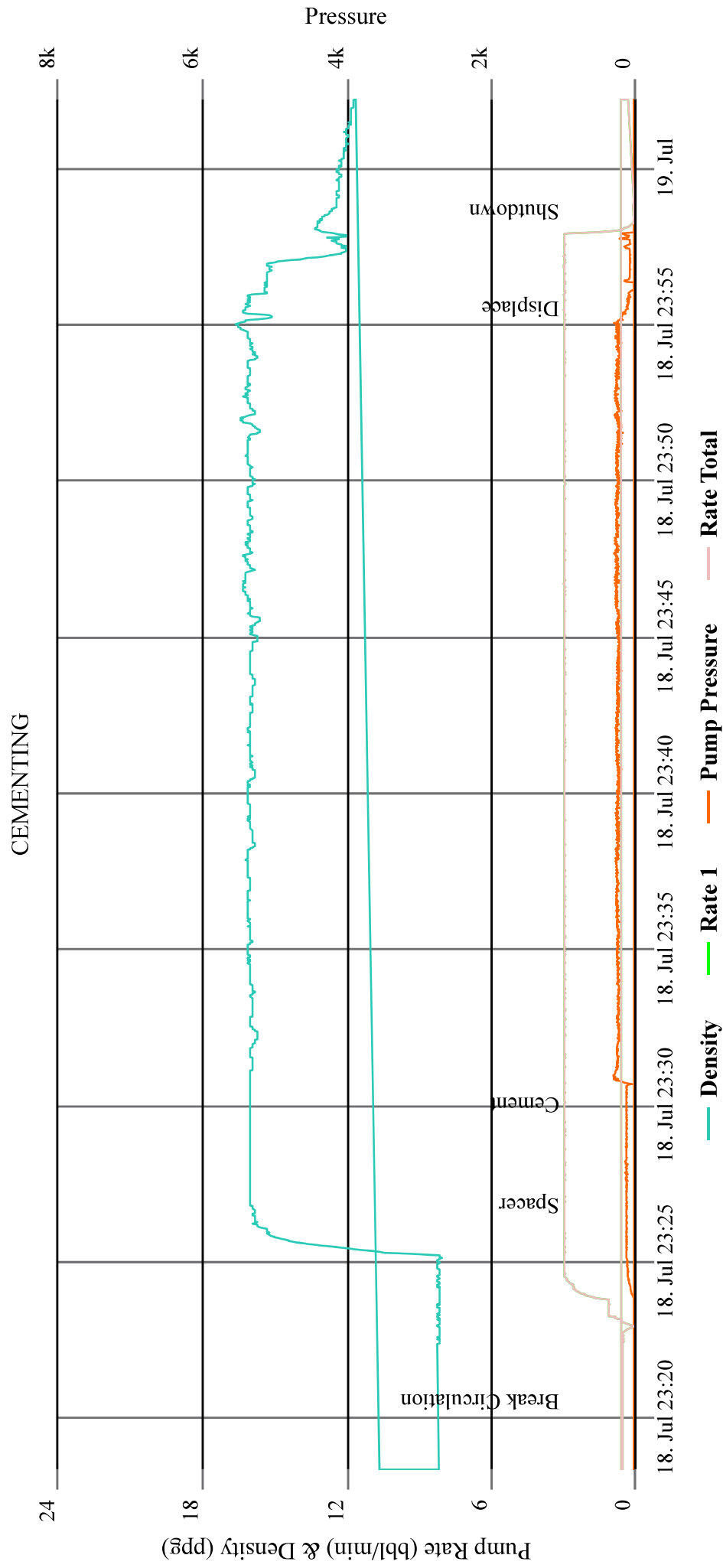
PO Box 329

**Ft. Lupton, CO 80621
(303) 654-9202**

"Here Safety Meets Quality at the Axis of Efficiency"

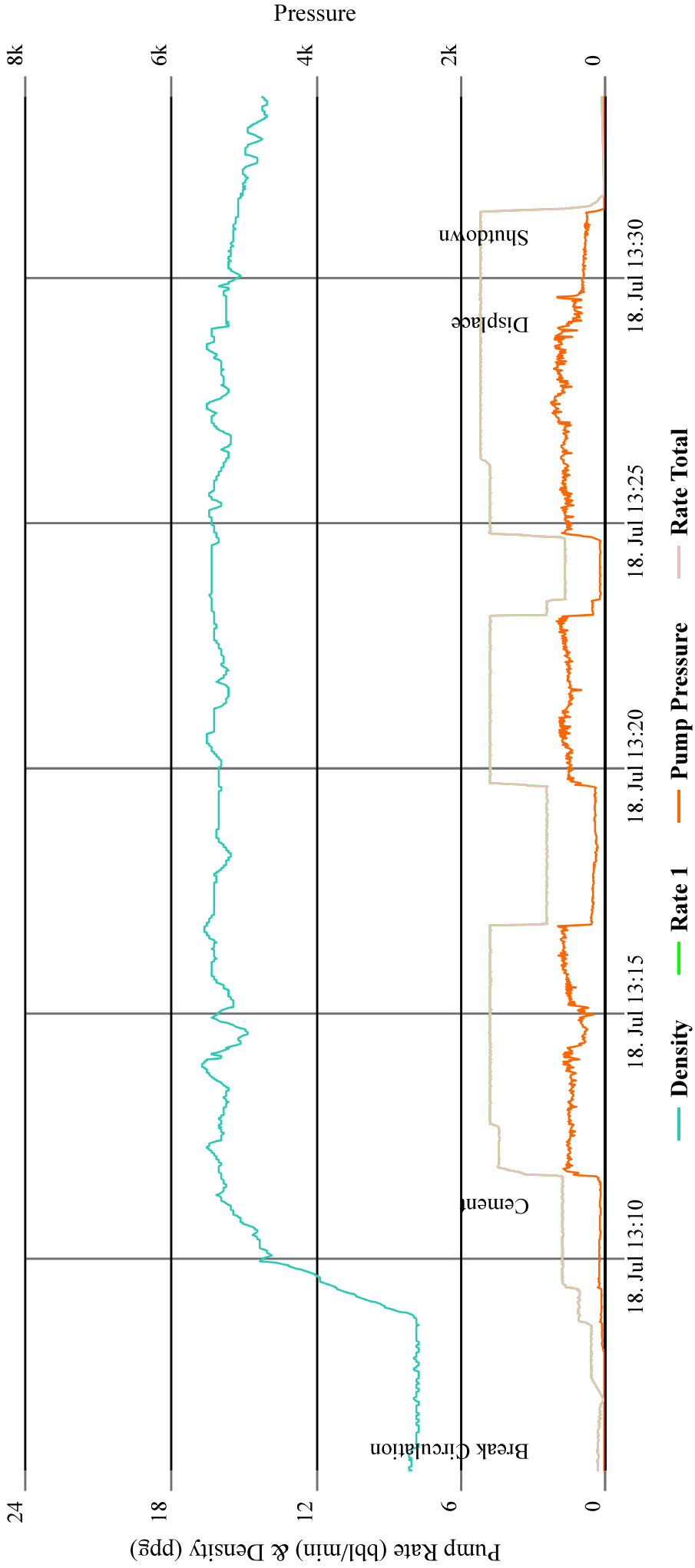
Date of Service		Job Type	Customer	Consultant	Well Name		Last Tckt	Ticket #		
7/18/2024		Surface Plug	OXY	Jeremy Duty	Oscar & Jennie Berglund 1		No	3628		
State	County	API			Rig		Operator			
Colorado	Weld	05-123-08627			Ensign 122		Alexander Pomaes			
Well Information							Water			
	Work String	Prod CSG	Surface	OH (I.D.)	Annular	Temp	70 °F			
OD & Weight	DP 4 1/2" 16.6#		8 5/8" 24#	7.875		PH	7			
bbl/ft Factor	0.01422	0	0.0636	0.0602		Chloride	.6ppm			
Length in ft	880		692	188		Well Description	Depth in Ft			
Capacity in bbls	12.51	0.00	44.01	11.33	0.00	TOC	350			
OD & Weight						Shoe	692			
bbl/ft Factor	0	0	0	0.0000		EOP	880			
Length in ft										
Capacity in bbls	0.00	0.00	0.00	0.00	0.00					
OD & Weight										
bbl/ft Factor	0	0	0	0.0000						
Length in ft										
Capacity in bbls	0.00	0.00	0.00	0.00	0.00					
Buoyancy	0.76	Buoyancy	0.76	Buoyancy	0.76					
Lift Pressure	PRV	Lift Pressure	PRV	Lift Pressure	PRV					
698	500									
Drivers, Crew and Equipment Allocation										
Driver and Heavy Duty Equipment				Crew and Light Duty Equipment			Misc. Tools or Equipment			
Driver	Tractor	Trailer	Mileage	Crew	Equipment	Mileage	Required or Requested			
Alexander Pomaes	90530			Jonathon Rhamy	7490					
Kyle Carr	3503	B 2359		Bret Wade						
Total Heavy Duty Mileage			0	Total Light Duty Mileage			0			
Surface AGM	330	Blend	0	Blend	0	Job Specific Remarks				
Class G 94lb/sk	31,020.0	Class G 94lb/sk	-	Class G 94lb/sk	-					
CaCL2	620.4	CaCL2	-	CaCL2	-					
Gypsum	1,240.8	Gypsum	-	Gypsum	-					
RFL-1 (latex)	124.1	RFL-1 (latex)	-	RFL-1 (latex)	-					
Defoamer	93.1	Defoamer	-	Defoamer	-					
RFL-70X(Latex)	-	RFL-70X(Latex)	-	RFL-70X(Latex)	-					
RFL-9(Fluid Loss)	-	RFL-9(Fluid Loss)	-	RFL-9(Fluid Loss)	-					
RCD-3(Dispersant)	-	RCD-3(Dispersant)	-	RCD-3(Dispersant)	-					
RCR-201(Retarder)	-	RCR-201(Retarder)	-	RCR-201(Retarder)	-					
PreMag	-	PreMag	-	PreMag	-					
THIX-C2	-	THIX-C2	-	THIX-C2	-					
Silica Flour	-	Silica Flour	-	Silica Flour	-					
Desc	Qty	Rate	Total	Desc	Qty				Rate	Total
Class G 94lb/sk	330									
CaCL2	621.00									
Gypsum	1241.0									
RFL-1 (latex)	125.0									
Defoamer	94.0									
Dye	1.00									
Sugar	200.00									
Alpha	3.00									
Pump & Bulk/Hour	10.00									
Bulk Material Blending	1.00									
Bulk Material Delivery	1.00									
Print		Sign		Date						


OSCAR & JENNIE BERGLUND 1 SURFACE AGM PLUG @ 880'



OSCAR & JENNIE BERGLUND 1 UPPER AGM PLUG @ 1,750'

CEMENTING



		PO Box 329 Ft. Lupton, CO 80621 (303) 654-9202		"Here Safety Meets Quality at the Axis of Efficiency"													
Date of Service	Job Type	Customer	Consultant	Well Name		Last Tckt	Ticket #										
7/19/2024	Surface	OXY	Jeremy Duty	Oscar & Jennie Berglund 1		Yes	3629										
State	County	API		Rig		Operator											
Colorado	Weld	05-123-08627		Ensign 122		Alexander Pomaes											
Well Information				Water													
	Work String	Prod CSG	Surface	OH (I.D.)	Annular	Temp	70 °F										
OD & Weight	DP 4 1/2" 16.6#		8 5/8" 24#			PH	7										
bbl/ft Factor	0.01422	0	0.0636	0.0000		Chloride	.6ppm										
Length in ft	350		350			Well Description	Depth in Ft										
Capacity in bbls	4.98	0.00	22.26	0.00	0.00	TOC	Surface										
OD & Weight						EOP	350										
bbl/ft Factor	0	0	0	0.0000													
Length in ft																	
Capacity in bbls	0.00	0.00	0.00	0.00	0.00												
OD & Weight																	
bbl/ft Factor	0	0	0	0.0000													
Length in ft																	
Capacity in bbls	0.00	0.00	0.00	0.00	0.00												
Buoyancy	0.76	Buoyancy	0.76	Buoyancy	0.76												
7/19/2024	s	Lift Pressure	PRV	Lift Pressure	PRV												
278	250																
Drivers, Crew and Equipment Allocation																	
Driver and Heavy Duty Equipment				Crew and Light Duty Equipment			Misc. Tools or Equipment										
Driver	Tractor	Trailer	Mileage	Crew	Equipment	Mileage	Required or Requested										
Alexander Pomaes	90530			Jonathon Rhamy	7490												
Kyle Carr	3503	B 2884		Bret Wade													
Total Heavy Duty Mileage			0	Total Light Duty Mileage		0											
Surface AGM		110	Blend		0	Blend		0									
Class G 94lb/sk	10,340.0	Class G 94lb/sk	-	Class G 94lb/sk	-	Job Specific Remarks											
CaCL2	206.8	CaCL2	-	CaCL2	-												
Gypsum	413.6	Gypsum	-	Gypsum	-												
RFL-1 (latex)	41.4	RFL-1 (latex)	-	RFL-1 (latex)	-												
Defoamer	31.0	Defoamer	-	Defoamer	-												
RFL-70X(Latex)	-	RFL-70X(Latex)	-	RFL-70X(Latex)	-												
RFL-9(Fluid Loss)	-	RFL-9(Fluid Loss)	-	RFL-9(Fluid Loss)	-												
RCD-3(Dispersant)	-	RCD-3(Dispersant)	-	RCD-3(Dispersant)	-												
RCR-201(Retarder)	-	RCR-201(Retarder)	-	RCR-201(Retarder)	-												
PreMag	-	PreMag	-	PreMag	-												
THIX-C2	-	THIX-C2	-	THIX-C2	-												
Silica Flour	-	Silica Flour	-	Silica Flour	-												
Desc		Qty	Rate	Total				Desc		Qty	Rate	Total					
Class G 94lb/sk	110																
CaCL2	207.00																
Gypsum	414.0																
RFL-1 (latex)	42.0																
Defoamer	32.0																
Sugar	100.00																
Alpha	1.00																
Pump & Bulk/Hour	2.00																
Pump & Bulk/Hour	4.00																
Data Recording	1.00																
Bulk Material Blending	1.00																
Print										Sign				Date			

[illegible]

OSCAR & JENNIE BERGLUND 1 SURFACE AGM PLUG @ 350'

