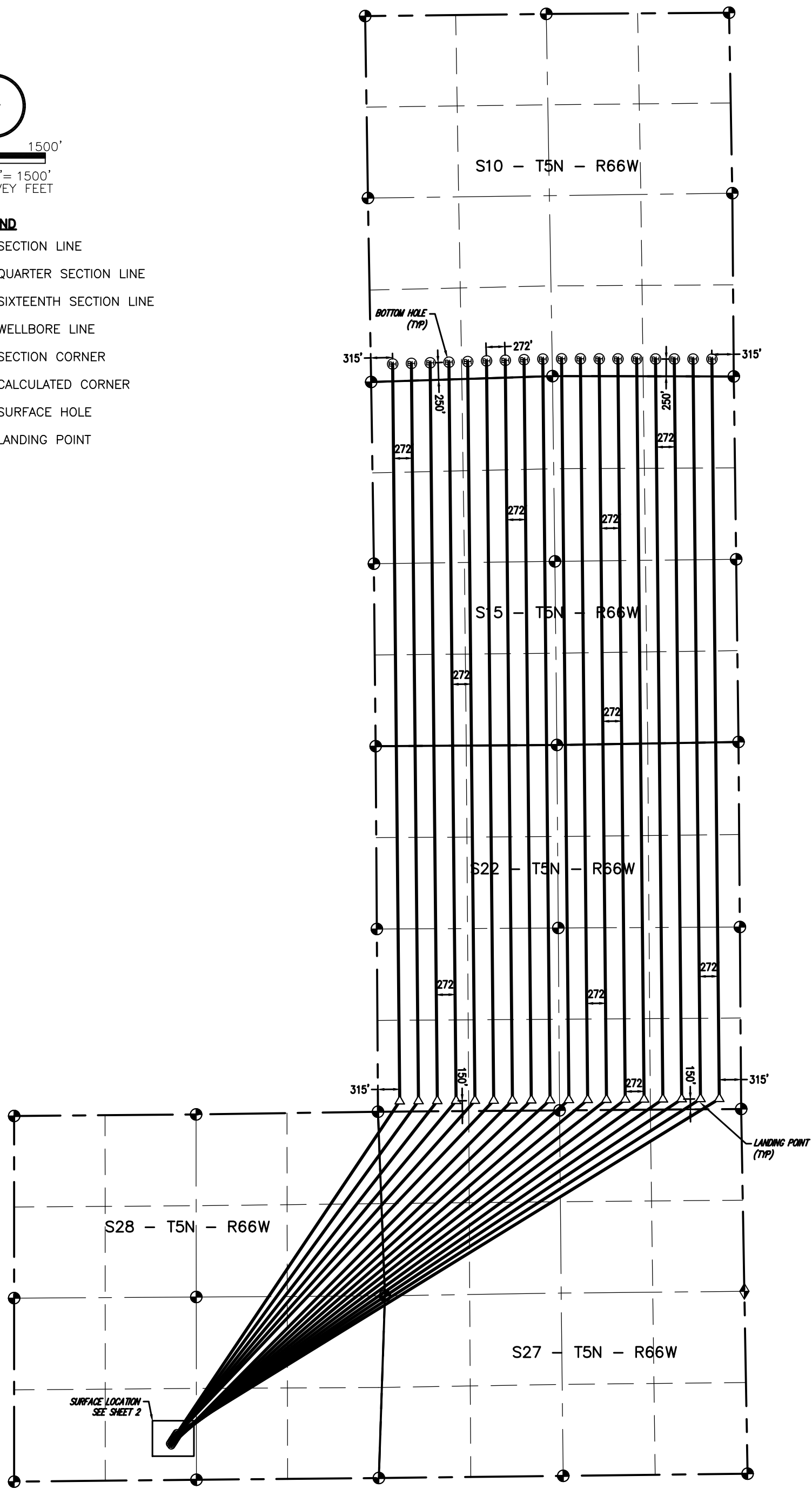


**LEGEND**

- SECTION LINE
- - - QUARTER SECTION LINE
- - - SIXTEENTH SECTION LINE
- WELLBORE LINE
- SECTION CORNER
- ◆ CALCULATED CORNER
- SURFACE HOLE
- △ LANDING POINT



**LAMP RYNEARSON**

LAMPRYNEARSON.COM

OMAHA, NEBRASKA  
14710 W. DODGE RD., STE. 100 (402)496-2498  
FORT COLLINS, COLORADO  
4715 INNOVATION DR., STE. 100 (970)228-0342  
KANSAS CITY, MISSOURI  
9001 STATE LINE RD., STE. 200 (816)351-0440

DESIGNER / DRAFTER

**JOSH CROAK**

REVIEWER

**MICHAEL STRATTON**

PROJECT NUMBER

**0221023**

DATE

**12/18/2023**

SURFACE LOCATION

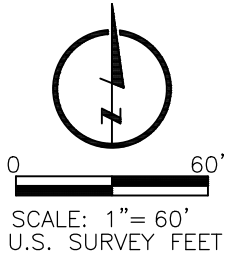
**SE/4 SW/4 SEC28, T5N, R66W**

BOOK AND PAGE

# T-BONE XOG-28 DIRECTIONAL WELL PLAT

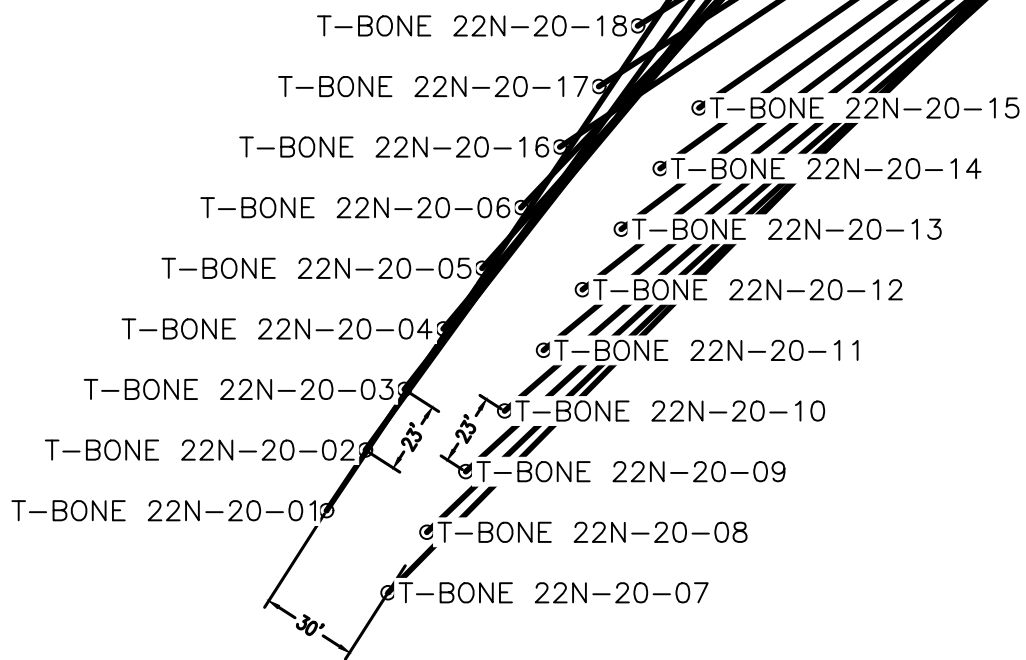


L:\Engineering\0221023\01\_XOG\_T\_Bone\_IL\SURVEY\DRAWINGS\BASE MODELS\0221023-PNT.dwg, 12/19/2023 8:54:19 AM, JOSHUA A. CROAK, LAMP RYNEARSON



**LEGEND**

- SECTION LINE
- - - - - QUARTER SECTION LINE
- - - - - SIXTEENTH SECTION LINE
- WELLBORE LINE
- ⊕ SECTION CORNER
- ◆ CALCULATED CORNER
- ⊙ SURFACE HOLE
- △ LANDING POINT



L:\Engineering\0221023\01\_XOG\_T\_Bone\_IL\SURVEY\DRAWINGS\BASE MODELS\0221023-PNT.dwg, 12/19/2023 8:53:41 AM, JOSHUA A. CROAK, LAMP RYNEARSON

**LAMP RYNEARSON**

LAMP RYNEARSON.COM

OMAHA, NEBRASKA  
14710 W. DODGE RD., STE. 100 (402)496-2498  
FORT COLLINS, COLORADO  
4715 INNOVATION DR., STE. 100 (970)228-0342  
KANSAS CITY, MISSOURI  
9001 STATE LINE RD., STE. 200 (816)351-0440

DESIGNER / DRAFTER  
**JOSH CROAK**  
REVIEWER  
**MICHAEL STRATTON**  
PROJECT NUMBER  
**0221023**  
DATE  
**12/18/2023**  
SURFACE LOCATION  
**SE/4 SW/4 SEC28, T5N, R66W**  
BOOK AND PAGE

# T-BONE XOG-28

## DIRECTIONAL WELL PLAT DETAIL

