

LEGEND:
● = PROPOSED WELLHEAD.
◇ = LANDING POINT.
○ = LAST TAKE POINT.
○ = BOTTOM HOLE.
▲ = SECTION CORNERS LOCATED. (NAD 83)

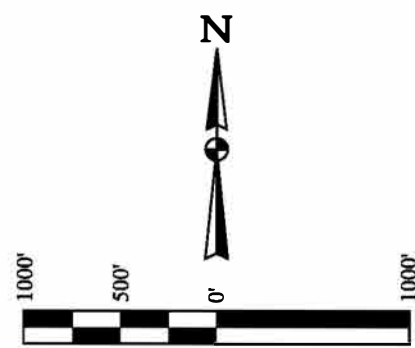
NOTE:
Distances referenced
on plat to section lines
are perpendicular.

T3S, R65W, 6th P.M.

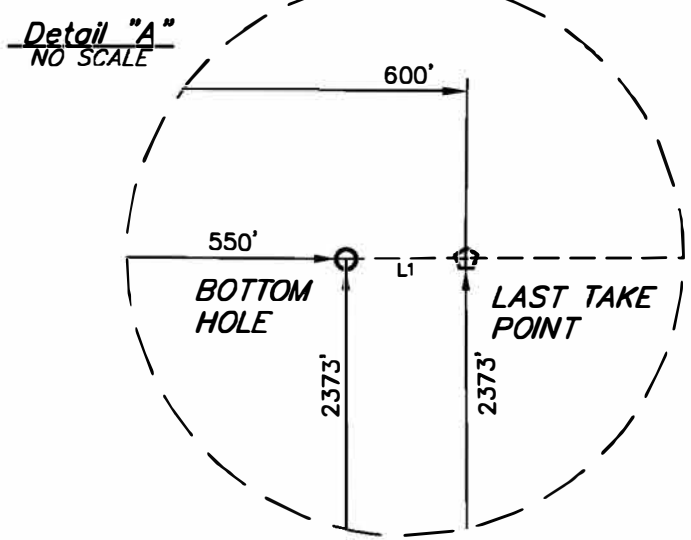
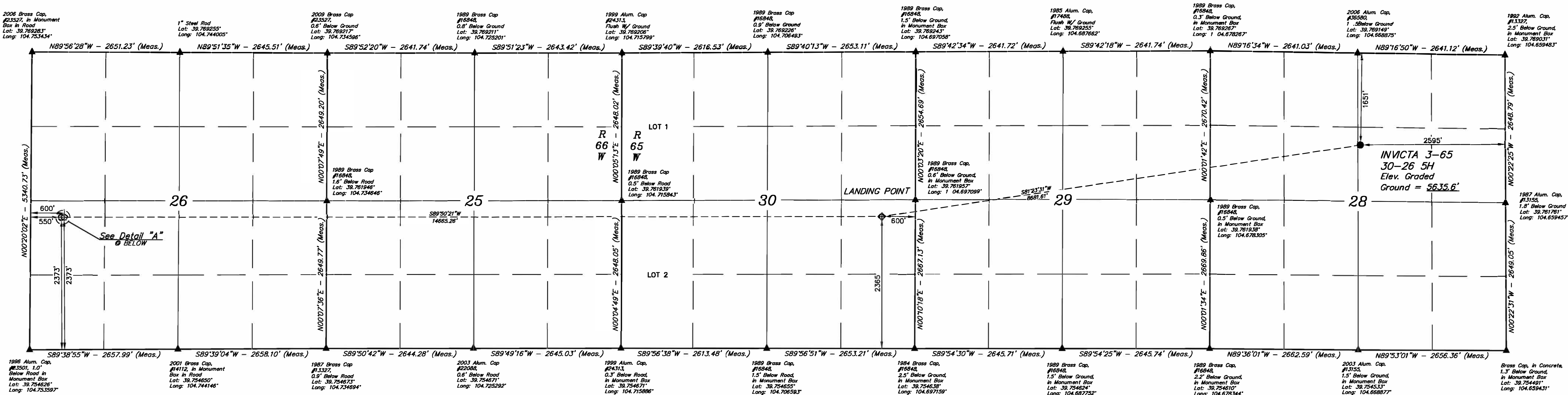
CRESTONE PEAK RESOURCES OPERATING LLC

INVICTA 3-65 30-26 5H
SW 1/4 NE 1/4, SECTION 28, T3S, R65W, 6th P.M.
ADAMS COUNTY, COLORADO

BASIS OF ELEVATION
OPUS SOLUTION GENERATED NAVD 88



| LINE TABLE | | |
|------------|-------------|--------|
| LINE | DIRECTION | LENGTH |
| L1 | S89°50'21"W | 50.00' |



CERTIFICATE OF RECORDING
THIS IS TO CERTIFY THAT THE ABOVE DESCRIBED SURVEY WAS CONDUCTED IN ACCORDANCE WITH THE RULES AND REGULATIONS OF THE BOARD OF LAND SURVEYORS OF THE STATE OF COLORADO, AND THAT THE SAME ARE TRUE AND CORRECT TO THE BEST OF THE SURVEYOR'S KNOWLEDGE AND BELIEF.
REGISTERED LAND SURVEYOR
RECEIVED FOR RECORDING NO. 28281
STATE OF COLORADO
JUL 12 2023

PDOP = 1.5

| NAD 83 (SURFACE HOLE LOCATION) | NAD 83 (LANDING POINT) | NAD 83 (LAST TAKE POINT) | NAD 83 (BOTTOM HOLE) |
|---|---|---|---|
| LATITUDE = 39°45'52.62" (39.766167) LONGITUDE = 104°50'07.31" (104.668697) | LATITUDE = 39°45'40.08" (39.761139) LONGITUDE = 104°41'57.26" (104.699239) | LATITUDE = 39°45'40.12" (39.761143) LONGITUDE = 104°43'05.01" (104.713919) | LATITUDE = 39°45'40.12" (39.761143) LONGITUDE = 104°43'05.65" (104.713569) |

UELS, LLC
Corporate Office * 85 South 200 East
Vernal, UT 84078 * (435) 789-1017

UINTAH
REGISTERED LAND SURVEYING

SURVEYED BY: DALLAS NIELSEN
DRAWN BY: D.J.G.

01-2 6-2 3 SCALE
12 8211 1" = 100'

WELL LOCATION PLAT