

# Flowline Closure Checklist

## COGCC Rule 911.a.(4) Environmental Site Closure Assessment Field Form

Additional Attachments:		Tank Battery Closure		Wellhead Closure	03/08/22		Pit Closure		Partially Buried Vault Closure	
Site Name & COGCC Facility Number: Stephenson #6-31		Date: 03/09/23						Remediation Project #: 21787		
Associated Wells: 05-123-22625		Age of Site: Years						Number of Photos Attached: 13		
Starting point: (GPS coordinates and descriptions) 40.513093 / -104.59469 at well										
End point: (GPS coordinates and descriptions) 40.510442 / -104.601334 at separator										
USCS Soil Type: Clayey SAND					Estimated Depth to Groundwater: Approx. 20-30'					
Hydrocarbon Impacted Soils / Spills: (Note estimated size and if impact appears to be surficial or extends to an unknown depth)										
None observed.										
Salt Crusted Soils or Impacted Vegetation: (Note estimated size and if impact appears to be surficial or extends to an unknown depth)										
None observed.										
<b>Flowlines</b>										
Flowline type	O, G, W									
Depth	Approx. 3'									
Age	Years									
Length	Approx. 2805'									
Construction Material	Steel									
Were flowlines pulled?	Yes - Flowline Removed									
Visual Integrity of lines	Good - Per integrity test.									
Visual impacts if trenched	None observed.									
PID Readings if trenched	PID Range (0.1 - 0.4)									
Sample taken? Location/Sample ID#	FL-SS-01 - FL-SS-13									
Photo Number(s)	See photolog									
Other observations regarding on location flowlines:										
Flowline removed. Pt. A collected during wellhead decommissioning. Flowline change of directions assessed.										
<b>Summary</b>										
Was impacted soil identified?										
<input checked="" type="checkbox"/> No         Yes - less than 10 cubic yards         Yes - more than 10 cubic yards										
Total number of samples field screened: 13					Total number of samples collected: 13					
Highest PID Reading: 0.4					Total number of samples submitted to lab for analysis: 4					
If more than 10 cubic yards of impacted soil were observed:										
Vertical extent:					Estimated spill volume:					
Lateral extent:					Volume of soil removed:					
Is additional investigation required?										
Was groundwater encountered during the investigation?										
<input checked="" type="checkbox"/> No         Yes - not impacted or in contact with impacted soils         Yes - groundwater impacted and/or in contact with impacted soils										
Measured depth to groundwater:					Was remedial groundwater removal conducted? Yes No					
Date Groundwater was encountered:					Commencement date of removal:					
Sheen on groundwater? Yes No					Volume of groundwater removed prior to sampling:					
Free product observed? Yes No					Volume of groundwater removed post sampling:					
Total number of samples collected:					Total Volume of groundwater removed:					
Total number of samples submitted to lab for analysis:										

## **FIGURES**

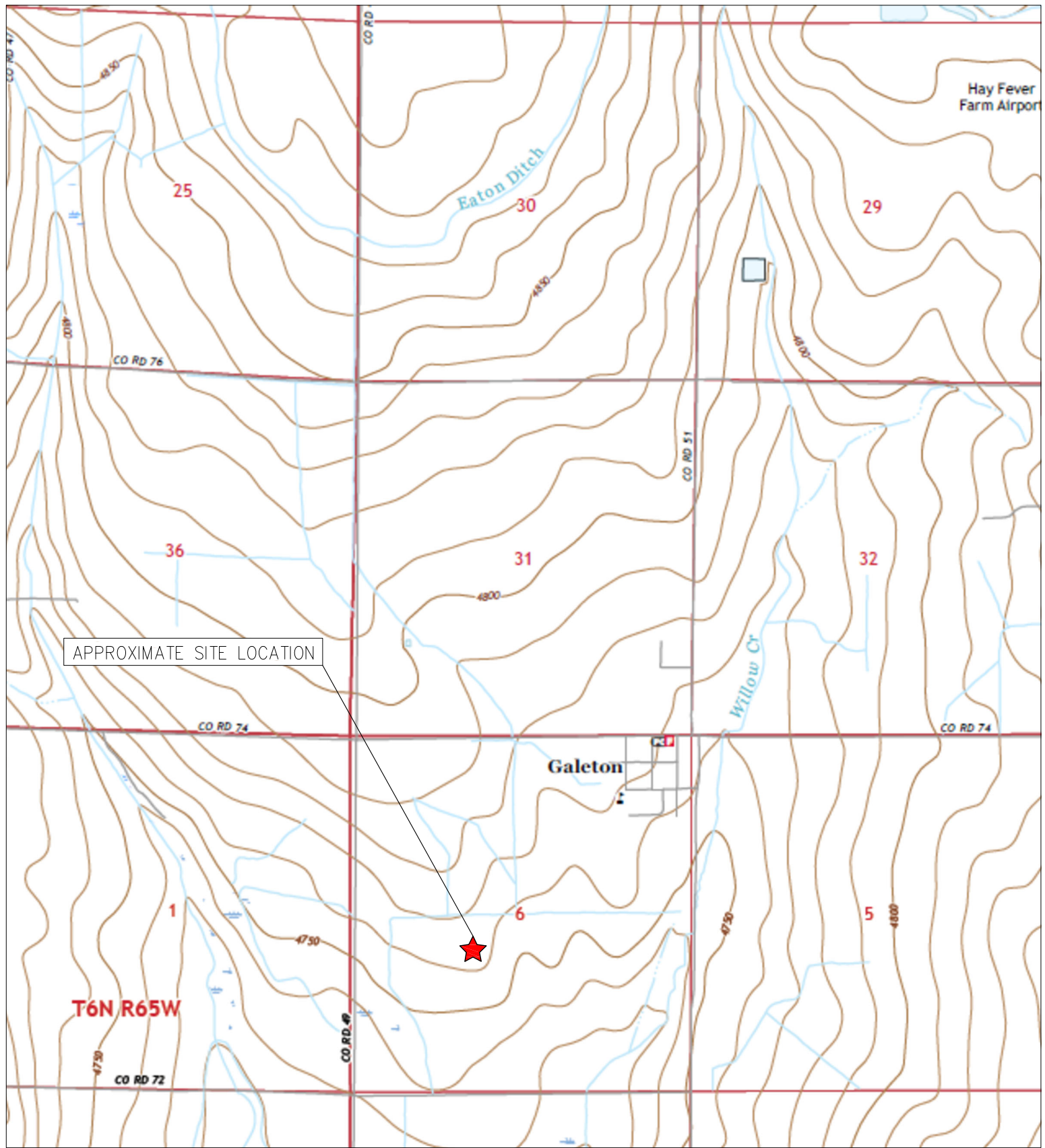
**Figure 1: Topographic Site Location Map**

**Figure 2: Aerial Site Location Map**

**Figure 3: Soil Analytical Map**

**Figure 4: Polycyclic Aromatic Hydrocarbons Map**

**Figure 5: Metals in Soil Map**



TOPOGRAPHIC SITE LOCATION MAP  
 STEPHENSON #6-31  
 CLOSURE ASSESSMENT  
 40.513070 / -104.594650  
 NE¼ SW¼ SEC.6 T6N R64W 6PM  
 WELD COUNTY, COLORADO  
 API # 05-123-22625  
 REMEDIATION # 21787



**EAGLE**  
 ENVIRONMENTAL  
 CONSULTING, LLC

8000 W 44th Ave, Wheat Ridge, CO 80033  
 Ph: 303-433-0479 • F: 303-325-5449

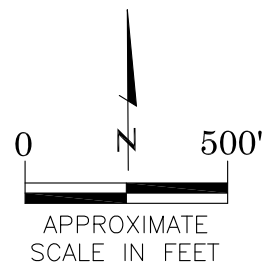
SOURCE: USGS 7.5 MINUTE TOPOGRAPHIC MAP  
 GALETON, CO QUADRANGLE 2022

FIGURE NO. 1



#### LEGEND

- FORMER STEPHENSON #6-31 WELLHEAD (PLUGGED AND ABANDONED IN 2022)
- ASSOCIATED SEPARATOR (DECOMMISSIONED)
- APPROXIMATE FLOWLINE LOCATION (REMOVED)
- APPROXIMATE FLOWLINE LOCATION (ABANDONED IN PLACE)
- APPROXIMATE FLOWLINE SAMPLE LOCATIONS – FIELD SCREENED
- APPROXIMATE FLOWLINE SAMPLE LOCATIONS – LAB SUBMITTED



#### AERIAL SITE LOCATION MAP

STEPHENSON #6-31  
CLOSURE ASSESSMENT  
40.513070 / -104.594650  
NE¼ SW¼ SEC.6 T6N R64W 6PM  
WELD COUNTY, COLORADO  
API # 05-123-22625  
REMEDATION # 21787

FIGURE NO.

2

DRAWN BY:

KM



**EAGLE**  
ENVIRONMENTAL  
CONSULTING, LLC  
8000 W 44th Ave. Wheat Ridge, CO 80033  
Ph: 303-433-0479 • F: 303-325-5449



# LEGEND

- WELLHEAD ASSESSMENT BOUNDARIES (PLUGGED & ABANDONED IN 2022)
- APPROXIMATE FLOWLINE LOCATION (REMOVED)
- APPROXIMATE FLOWLINE LOCATION (ABANDONED)
- **SS-02** APPROXIMATE LOCATION OF SOIL SAMPLES FIELD SCREENED, ONLY, WITH PHOTOIONIZATION DETECTOR
- **SS-02** APPROXIMATE LOCATION OF SOIL SAMPLES SUBMITTED FOR LABORATORY ANALYSIS

## PARAMETERS

SAMPLE LOCATION  
DATE  
DEPTH (FEET)  
B = BENZENE (mg/kg)  
T = TOLUENE (mg/kg)  
E = ETHYLBENZENE (mg/kg)  
X = TOTAL XYLENES (mg/kg)  
G = TPH-GRO (mg/kg)  
D = TPH-DRO (mg/kg)  
R = TPH-RRO (mg/kg)  
1,2,4-TMB = 1,2,4 TRIMETHYLBENZENE (mg/kg)  
1,3,5-TMB = 1,3,5 TRIMETHYLBENZENE (mg/kg)  
Brn= BORON (mg/L)  
EC = SPECIFIC CONDUCTANCE (mmhos/cm)  
SAR= SODIUM ADSORPTION RATIO  
pH = pH (pH UNITS)

mg/kg = MILLIGRAMS PER KILOGRAM  
mg/L = MILLIGRAMS PER LITER  
mmhos/cm = MILLIMHOS PER CENTIMETER

TPH-GRO = TOTAL PETROLEUM HYDROCARBONS – GASOLINE RANGE ORGANICS  
TPH-DRO = TOTAL PETROLEUM HYDROCARBONS – DIESEL RANGE ORGANICS  
TPH-RRO = TOTAL PETROLEUM HYDROCARBONS – RESIDUAL RANGE ORGANICS

NOTES:  
VALUES PRESENTED WITH A LESS THAN SYMBOL (<) DID NOT CONTAIN CONCENTRATIONS AT OR ABOVE LABORATORY DETECTION LIMITS.

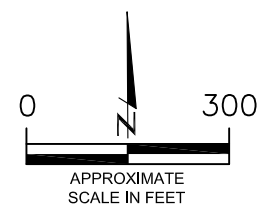
VALUES PRESENTED IN **BOLD** EXCEED ECMC TABLE 915-1 REGULATORY LIMITS.

ECMC = ENERGY & CARBON MANAGEMENT COMMISSION

SOIL ANALYTICAL MAP  
STEPHENSON #6-31  
CLOSURE ASSESSMENT  
40.513070 / -104.594650  
NE¼ SW¼ SEC.6 T6N R64W 6PM  
WELD COUNTY, COLORADO  
API # 05-123-22625  
REMEDIATION # 21787

FIGURE NO.  
3

DRAWN BY:  
GEC



# LEGEND

- WELLHEAD ASSESSMENT BOUNDARIES (PLUGGED & ABANDONED IN 2022)
- APPROXIMATE FLOWLINE LOCATION (REMOVED)
- APPROXIMATE FLOWLINE LOCATION (ABANDONED)
- APPROXIMATE LOCATION OF SOIL SAMPLES FIELD SCREENED, ONLY, WITH PHOTOIONIZATION DETECTOR
- APPROXIMATE LOCATION OF SOIL SAMPLES SUBMITTED FOR LABORATORY ANALYSIS

## PARAMETERS

SAMPLE LOCATION  
DATE SAMPLE COLLECTED  
APPROXIMATE DEPTH

POLYCYCLIC AROMATIC HYDROCARBONS (PAHs) (mg/kg)

mg/kg = MILLIGRAMS PER KILOGRAM

ND = NON-DETECT

## NOTES:

VALUES PRESENTED WITH A LESS THAN SYMBOL (<) DID NOT CONTAIN CONCENTRATIONS AT OR ABOVE LABORATORY DETECTION LIMITS.

VALUES PRESENTED IN **BOLD** EXCEED ECMC TABLE 915-1 REGULATORY LIMITS.

ECMC = ENERGY & CARBON MANAGEMENT COMMISSION

## POLYCYCLIC AROMATIC HYDROCARBONS MAP

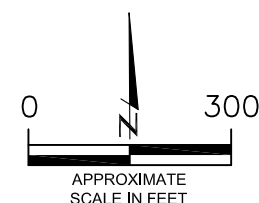
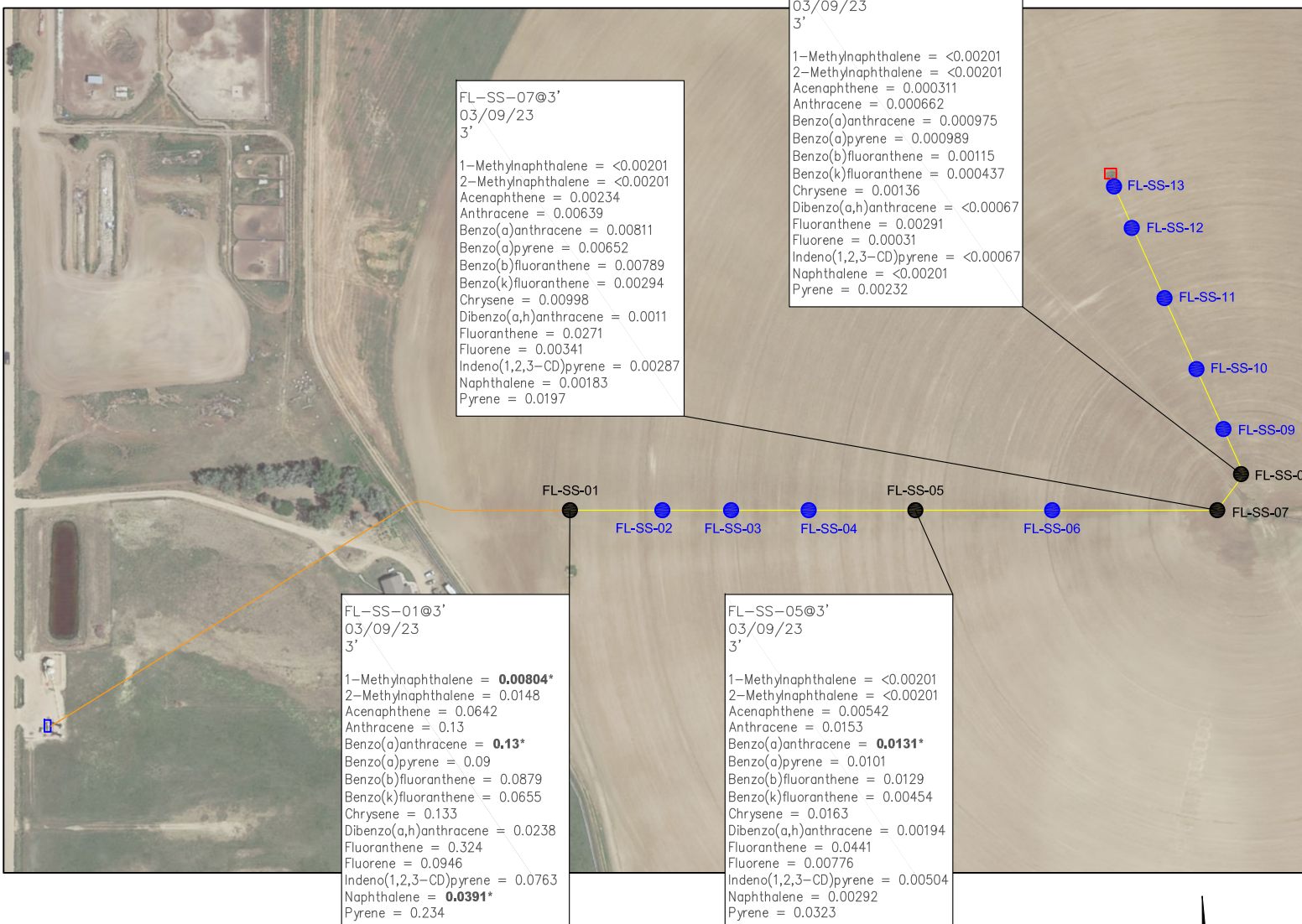
STEPHENSON #6-31  
CLOSURE ASSESSMENT  
40.513070 / -104.594650  
NE¼ SW¼ SEC.6 T6N R64W 6PM  
WELD COUNTY, COLORADO  
API # 05-123-22625  
REMEDATION # 21787

FIGURE NO.  
4

DRAWN BY:  
GEC



**EAGLE**  
ENVIRONMENTAL  
CONSULTING, LLC  
8000 W 44th Ave, Wheat Ridge, CO 80033  
Ph: 303-433-0479 • F: 303-325-5449





# LEGEND

- WELLHEAD ASSESSMENT BOUNDARIES (PLUGGED & ABANDONED IN 2022)
- APPROXIMATE FLOWLINE LOCATION (REMOVED)
- APPROXIMATE FLOWLINE LOCATION (ABANDONED)
- **SS-02** APPROXIMATE LOCATION OF SOIL SAMPLES FIELD SCREENED, ONLY, WITH PHOTOIONIZATION DETECTOR
- **SS-02** APPROXIMATE LOCATION OF SOIL SAMPLES SUBMITTED FOR LABORATORY ANALYSIS

## PARAMETERS

SAMPLE LOCATION  
DATE SAMPLE COLLECTED  
APPROXIMATE DEPTH  
Arsenic = (mg/kg)  
Barium = (mg/kg)  
Cadmium = (mg/kg)  
Chromium (VI) = (mg/kg)  
Copper = (mg/kg)  
Lead = (mg/kg)  
Nickel = (mg/kg)  
Selenium = (mg/kg)  
Silver = (mg/kg)  
Zinc = (mg/kg)

mg/kg = MILLIGRAMS PER KILOGRAM

NOTES:  
VALUES PRESENTED WITH A LESS THAN SYMBOL (<) DID NOT CONTAIN CONCENTRATIONS AT/OR ABOVE LABORATORY REPORTING LIMITS AND/OR MINIMUM DETECTION LIMITS.

VALUES PRESENTED IN **BOLD** EXCEED ECMC TABLE 915-1 REGULATORY LIMITS.

\*VALUES EXCEED ECMC TABLE 915-1 PROTECTION OF GROUNDWATER SOIL SCREENING LEVELS, ONLY.

\*\*ACHIEVABLE PRACTICAL QUANTITATIVE LIMITS FOR HEXAVALENT CHROMIUM (Cr VI) IN SOILS IS IN THE RANGE OF 0.1 TO 1 mg/kg. (1) SAMPLE REQUIRED DILUTION, RAISING LABORATORY DETECTION AND REPORTING LIMITS - SAMPLE IS NON-DETECT.

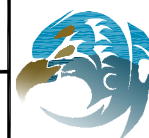
ELEVATED METALS ARE NATURALLY OCCURRING IN COLORADO. LOCAL CLEAN-UP LEVELS ARE 1.25\*BACKGROUND WHERE APPLICABLE.

ECMC = ENERGY & CARBON MANAGEMENT COMMISSION

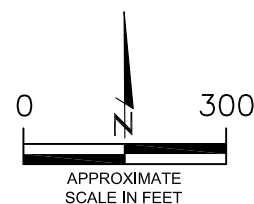
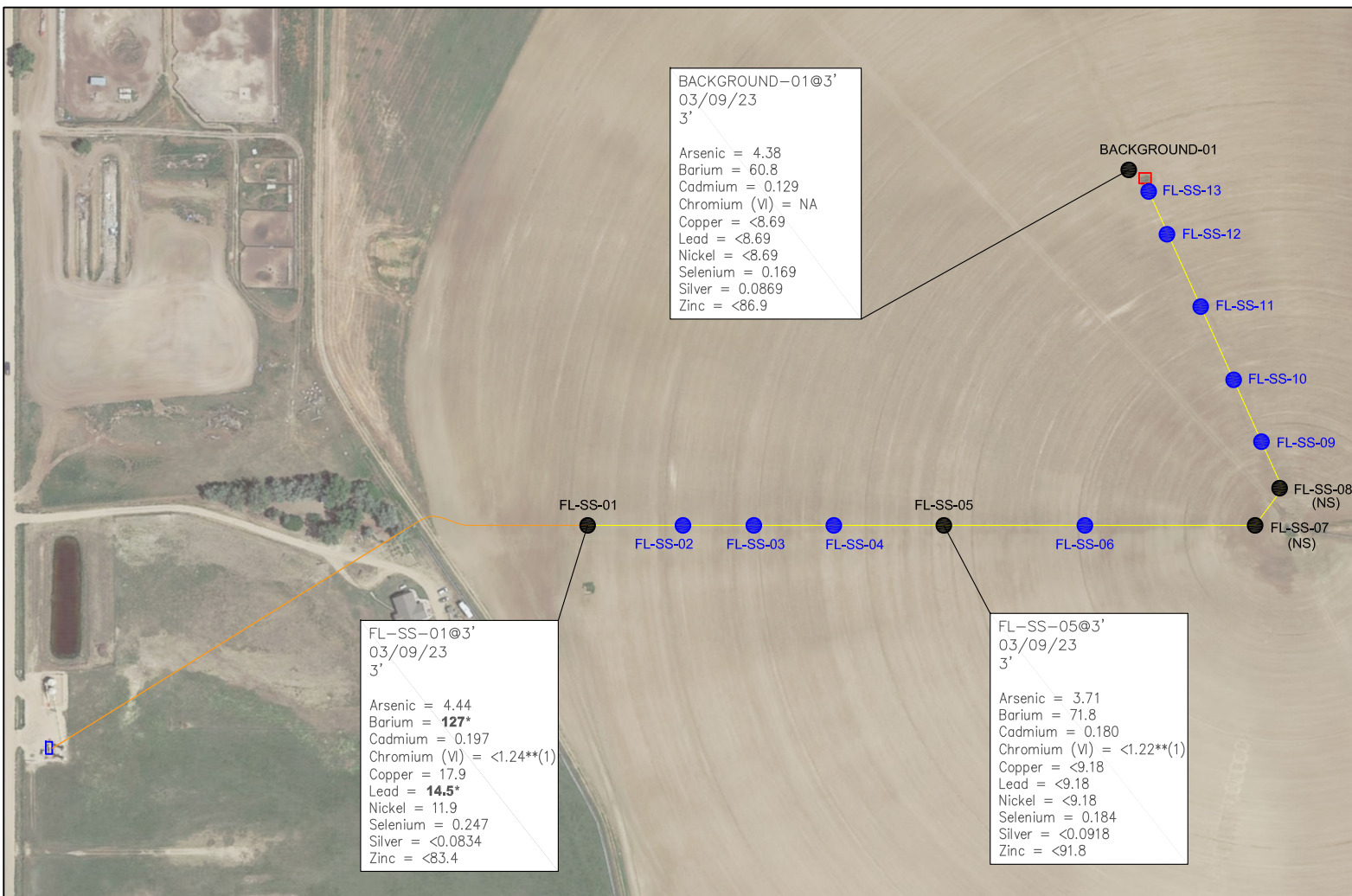
METALS IN SOIL MAP  
STEPHENSON #6-31  
CLOSURE ASSESSMENT  
40.513070 / -104.594650  
NE¼ SW¼ SEC.6 T6N R64W 6PM  
WELD COUNTY, COLORADO  
API # 05-123-22625  
REMEDATION # 21787

FIGURE NO.  
5

DRAWN BY:  
GEC



**EAGLE**  
ENVIRONMENTAL  
CONSULTING, LLC  
8000 W 44th Ave, Wheat Ridge, CO 80033  
Ph: 303-433-0479 • F: 303-325-5449



## **TABLES**

**Table 1: Photoionization Detector Reading Summary**

**Table 2: Soil Analytical Results Summary**

**Table 3: Polycyclic Aromatic Hydrocarbons Analytical Results Summary**

**Table 4: Metals Analytical Results Summary**



TABLE 1  
 PHOTOIONIZATION DETECTOR READING SUMMARY  
 STEPHENSON #6-31  
 CLOSURE ASSESSMENT  
 40.513070 / -104.594650  
 NE1/4 SW1/4 SEC.6 T6N R64W 6PM  
 WELD COUNTY, COLORADO  
 API # 05-123-22625  
 REMEDIATION # 21787

Sample Location (Latitude/Longitude)	Date	Approximate Depth (feet)	PID Reading (ppm-v)	Lab Submission (Y/N)
WH-SS-01 @ 5' (40.513081 / -104.594687)	03/08/22	5	8.5	N
WH-SS-02 @ 5' (40.513071 / -104.594667)	03/08/22	5	8.0	N
WH-SS-03 @ 5' (40.513058 / -104.594681)	03/08/22	5	6.0	N
WH-SS-04 @ 5' (40.513072 / -104.594698)	03/08/22	5	4.9	N
WH-FS-01 @ 6' (40.513066 / -104.594685)	03/08/22	6	4.9	Y
FL-SS-01 @ 3' (40.511415 / -104.598067)	03/09/23	3	0.1	Y
FL-SS-02 @ 3' (40.511433 / -104.597482)	03/09/23	3	0.2	N
FL-SS-03 @ 3' (40.511438 / -104.596973)	03/09/23	3	0.1	N
FL-SS-04 @ 3' (40.511453 / -104.596385)	03/09/23	3	0.1	N
FL-SS-05 @ 3' (40.511456 / -104.595717)	03/09/23	3	0.1	Y
FL-SS-06 @ 3' (40.511470 / -104.595061)	03/09/23	3	0.3	N
FL-SS-07 @ 3' (40.511484 / -104.594017)	03/09/23	3	0.2	Y
FL-SS-08 @ 3' (40.511634 / -104.593932)	03/09/23	3	0.3	Y
FL-SS-09 @ 3' (40.511907 / -104.593971)	03/09/23	3	0.3	N
FL-SS-10 @ 3' (40.512339 / -104.594237)	03/09/23	3	0.4	N
FL-SS-11 @ 3' (40.512556 / -104.594353)	03/09/23	3	0.4	N
FL-SS-12 @ 3' (40.512854 / -104.594528)	03/09/23	3	0.2	N
FL-SS-13 @ 3' (40.513055 / -104.594651)	03/09/23	3	0.3	N
Background-01 @ 3' (40.512812 / -104.594187)	03/09/23	3	0.2	Y
(Y/N) = Yes or No ppm-v = parts per million by volume PID = photoionization detector				

TABLE 2  
SOIL ANALYTICAL RESULTS SUMMARY  
STEPHENSON #6-31  
CLOSURE ASSESSMENT  
40.513070 / -104.594650  
NE1/4 SW1/4 SEC.6 T6N R64W 6PM  
WELD COUNTY, COLORADO  
API # 05-123-22625  
REMEDATION # 21787

Sample Location (Latitude/Longitude)	Date	Approximate Depth (feet)	PID Reading (ppm-v)	Benzene (mg/kg)	Toluene (mg/kg)	Ethylbenzene (mg/kg)	Total Xylenes (mg/kg)	TPH-GRO (mg/kg)	TPH-DRO (mg/kg)	TPH-RRO (mg/kg)	1,2,4-TMB (mg/kg)	1,3,5-TMB (mg/kg)	Boron (mg/L)	Specific Conductance (mmhos/cm)	pH (pH units)	SAR
<b>ECMC Table 915-1 Residential Screening Levels (mg/kg)</b>				<b>1.20</b>	<b>490</b>	<b>5.8</b>	<b>58</b>	<b>500</b>			<b>30</b>	<b>27</b>	<b>2</b>	<b>&lt;4</b>	<b>6-8.3</b>	<b>&lt;6</b>
<b>ECMC Table 915-1 Protection of Groundwater Soil Screening Levels</b>				<b>0.0026</b>	<b>0.69</b>	<b>0.78</b>	<b>9.9</b>	<b>--</b>			<b>0.0081</b>	<b>0.0087</b>	<b>--</b>	<b>--</b>	<b>--</b>	<b>--</b>
WH-FS-01 @ 6' (40.513066 / -104.594685)	03/08/22	6	4.9	<0.00200	<0.00200	<0.00200	<0.00200	<0.200	<25.0	<100	<0.00200	<0.00200	0.217	0.355	8.03	0.523
FL-SS-01 @ 3' (40.511415 / -104.598067)	03/09/23	3	0.1	<0.00200	<0.00200	<0.00200	<0.00200	<0.200	<25.0	<100	<0.00200	<0.00200	0.591	2.60	8.06	0.922
FL-SS-05 @ 3' (40.511456 / -104.595717)	03/09/23	3	0.1	<0.00200	<0.00200	<0.00200	<0.00200	<0.200	<25.0	<100	<0.00200	<0.00200	0.529	0.544	8.19	1.10
FL-SS-07 @ 3' (40.511484 / -104.594017)	03/09/23	3	0.2	<0.00200	<0.00200	<0.00200	<0.00200	<0.200	<25.0	<100	<0.00200	<0.00200	0.431	0.708	8.18	1.13
FL-SS-08 @ 3' (40.511634 / -104.593932)	03/09/23	3	0.3	<0.00200	<0.00200	<0.00200	<0.00200	<0.200	<25.0	<100	<0.00200	<0.00200	0.290	0.562	8.30	0.642

ECMC = Energy & Carbon Management Commission

mg/kg = milligrams per kilogram

mmhos/cm = millimhos per centimeter

PID = Photoionization Detector

ppm-v = parts per million by volume

mg/L = milligrams per liter

SAR = Sodium Adsorption Ratio

TPH-GRO = Total Petroleum Hydrocarbons - Gasoline Range Organics

TPH-DRO = Total Petroleum Hydrocarbons - Diesel Range Organics

TPH-RRO = Total Petroleum Hydrocarbons - Residual Range Organics

1,2,4-TMB = 1,2,4-Trimethylbenzene

1,3,5-TMB = 1,3,5-Trimethylbenzene

MDL = Minimum Detection Limits

Note: Values presented with a less than symbol (<) did not contain concentrations at or above the laboratory MDL and/or reporting limit.

Note: Values presented in **BOLD** contained concentrations exceeding ECMC Table 915-1 Regulatory Limits.

TABLE 3  
POLYCYCLIC AROMATIC HYDROCARBONS ANALYTICAL RESULTS SUMMARY  
STEPHENSON #6-31  
CLOSURE ASSESSMENT  
40.513070 / -104.594650  
NE1/4 SW1/4 SEC.6 T6N R64W 6PM  
WELD COUNTY, COLORADO  
API # 05-123-22625  
REMEDIATION # 21787

Sample Location (Latitude/Longitude)	Date	Approximate Depth (feet)	PID Reading (ppm- v)	1-Methyl- naphthalene (mg/kg)	2-Methyl- naphthalene (mg/kg)	Acenaphthene (mg/kg)	Anthracene (mg/kg)	Benzo(a)-anthracene (mg/kg)	Benzo(a)- pyrene (mg/kg)	Benzo(b)- fluoranthene (mg/kg)	Benzo(k)- fluoranthene (mg/kg)	Chrysene (mg/kg)	Dibenzo(a,h)- anthracene (mg/kg)	Fluoranthene (mg/kg)	Fluorene (mg/kg)	Indeno(1,2,3- cd)-pyrene (mg/kg)	Naphthalene (mg/kg)	Pyrene (mg/kg)
ECMC Table 915-1 Residential Screening Levels				18	24	360	1,800	1.1	0.11	1.1	11	110	0.11	240	240	1.1	2	180
ECMC Table 915-1 Protection of Groundwater Soil Screening Levels				0.006	0.019	0.55	5.8	0.011	0.24	0.3	2.9	9	0.096	8.9	0.54	0.98	0.0038	1.3
WH-FS-01 @ 6' (40.513066 / -104.594685)	03/08/22	6	4.9	0.000416	0.00107	<0.00067	0.001	0.00714	0.00573	0.00671	0.00231	0.00715	0.00115	0.0162	<0.00067	0.00425	<0.00067	0.0139
FL-SS-01 @ 3' (40.511415 / -104.598067)	03/09/23	3	0.1	<b>0.00804*</b>	0.0148	0.0642	0.13	<b>0.13*</b>	0.09	0.0879	0.0655	0.133	0.0238	0.324	0.0946	0.0763	<b>0.0391*</b>	0.234
FL-SS-05 @ 3' (40.511456 / -104.595717)	03/09/23	3	0.1	<0.00201	<0.00201	0.00542	0.0153	<b>0.0131*</b>	0.0101	0.0129	0.00454	0.0163	0.00194	0.0441	0.00776	0.00504	0.00292	0.0323
FL-SS-07 @ 3' (40.511484 / -104.594017)	03/09/23	3	0.2	<0.00201	<0.00201	0.00234	0.00639	0.00811	0.00652	0.00789	0.00294	0.00998	0.0011	0.0271	0.00341	0.00287	0.00183	0.0197
FL-SS-08 @ 3' (40.511634 / -104.593932)	03/09/23	3	0.3	<0.00201	<0.00201	0.000311	0.000662	0.000975	0.000989	0.00115	0.000437	0.00136	<0.00067	0.00291	0.00031	<0.00067	<0.00201	0.00232
ECMC = Energy & Carbon Management Commission      PID = Photoionization Detector mg/kg = milligrams per kilogram      ppm-v = parts per million by volume Note: Values presented with a less than symbol (<) did not contain concentrations at or above the laboratory reporting limit. Note: Values presented in <b>BOLD</b> contained concentrations exceeding ECMC Table 915-1 Regulatory Limits																		

TABLE 4  
METALS ANALYTICAL RESULTS SUMMARY  
STEPHENSON #6-31  
CLOSURE ASSESSMENT  
40.513070 / -104.594650  
NE1/4 SW1/4 SEC.6 T6N R64W 6PM  
WELD COUNTY, COLORADO  
API # 05-123-22625  
REMEDIATION # 21787

Sample Location (Latitude/Longitude)	Date	Approximate Depth (feet)	Arsenic (mg/kg)	Barium (mg/kg)	Cadmium (mg/kg)	Hexavalent Chromium (mg/kg)	Copper (mg/kg)	Lead (mg/kg)	Nickel (mg/kg)	Selenium (mg/kg)	Silver (mg/kg)	Zinc (mg/kg)
<i>ECMC Table 915-1 Residential Screening Levels</i>			0.68	15,000	71	0.3**	3,100	400	1,500	390	390	23,000
<i>ECMC Table 915-1 Protection of Groundwater Soil Screening Levels</i>			0.29	82	0.38	0.00067**	46	14	26	0.26	0.8	370
<i>Local Cleanup Levels</i>			5.48	--	--	0.1 to 1**	--	--	--	--	--	--
FL-SS-01 @ 3' (40.511415 / -104.598067)	03/09/23	3	4.44	<b>127*</b>	0.197	<1.24**(1)	17.9	<b>14.5*</b>	11.9	0.247	<0.0834	<83.4
FL-SS-05 @ 3' (40.511456 / -104.595717)	03/09/23	3	3.71	71.8	0.180	<1.22**(1)	<9.18	<9.18	<9.18	0.184	<0.0918	<91.8
Background-01 @ 3' (40.512812 / -104.594187)	03/09/23	3	4.38	60.8	0.129	NA	<8.69	<8.69	<8.69	0.169	<0.0869	<86.9

ECMC = Energy & Carbon Management Commission  
mg/kg = milligrams per kilogram  
Notes: Values presented with a less than symbol (<) did not contain concentrations at or above the laboratory reporting limit or minimum detection levels.  
Values presented in **BOLD** contained concentrations exceeding applicable ECMC Table 915-1 Regulatory Limits  
Values presented with asterisk (\*) contained concentrations exceeding ECMC Table 915-1 Protection of Groundwater Soil Screening Levels  
\*\*Achievable practical quantitative limits for Hexavalent Chromium in soils is in the range of 0.1 to 1 mg/kg. (1) Sample required dilution, raising laboratory detection limits. Sample is non-detect.  
Elevated metals are naturally occurring in Colorado. Local clean-up levels are 1.25\*Background where applicable.



## **ATTACHMENT A**

### **Photo Log**

# Stephenson #6-31

## API # 05-123-22625

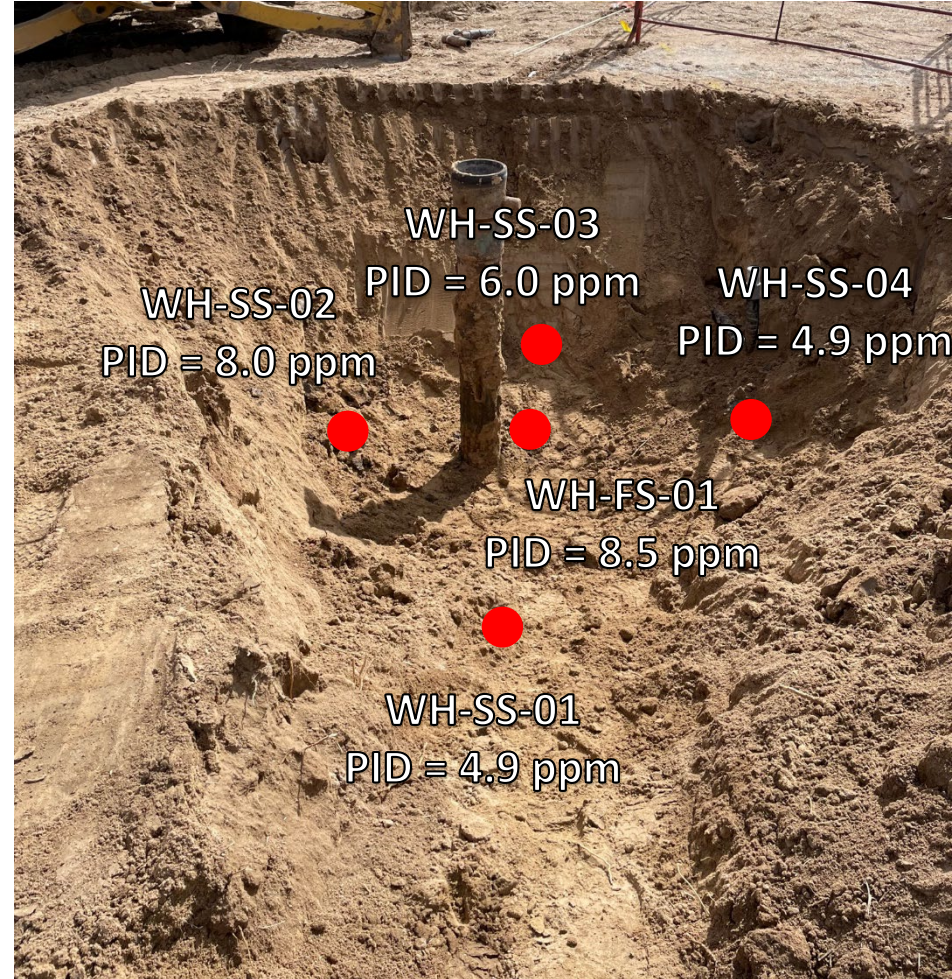
## Remediation # 21787

Closure Assessment

March 2022 – March 2023



# Wellhead Excavation – 03/08/22



Looking south

No petroleum hydrocarbon staining or odor observed

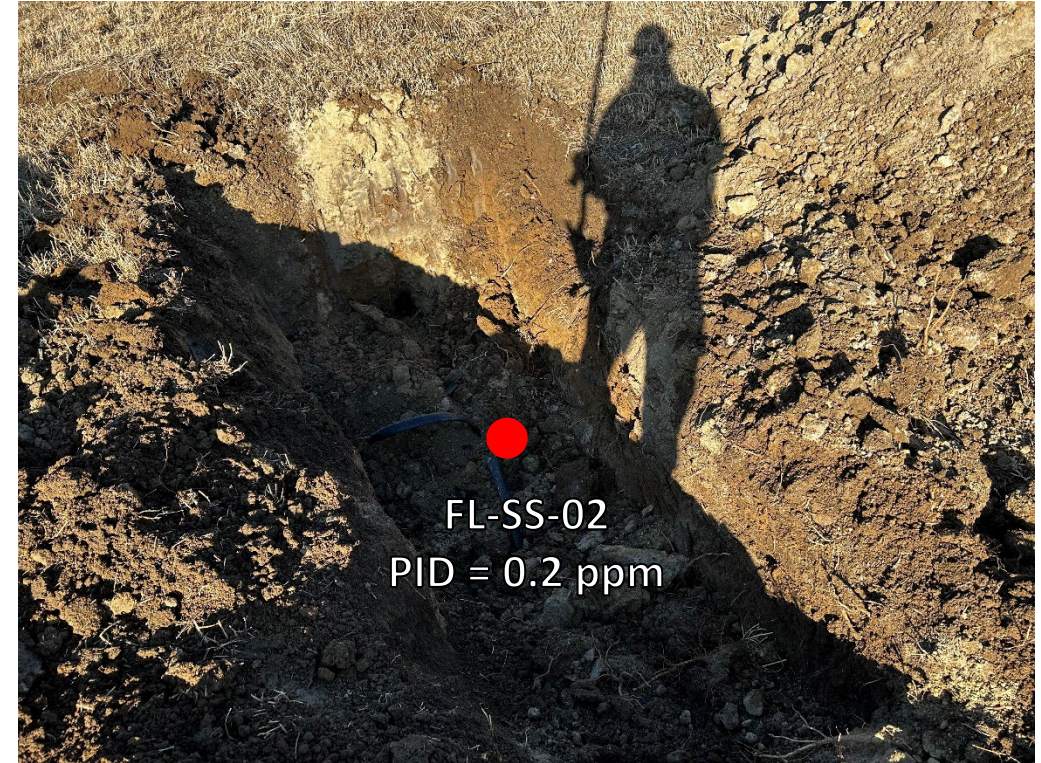


## Flowline Removal/Assessment – 03/09/23



Looking northwest at bellhole/cut-point of abandonment – lab submitted

No petroleum hydrocarbon staining or odor observed

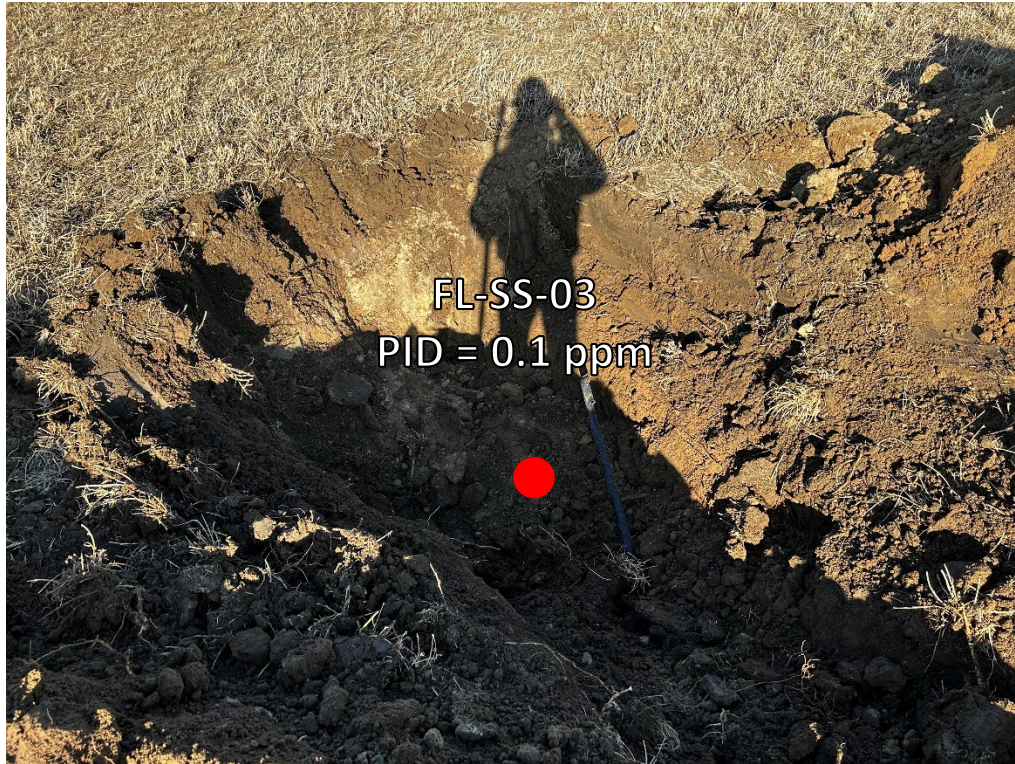


Looking southwest at bellhole/cut point for removal – field screened

No petroleum hydrocarbon staining or odor observed



## Flowline Removal/Assessment – 03/09/23



Looking southwest at at bellhole/cut point for removal – field screened

No petroleum hydrocarbon staining or odor observed



Looking southwest at bellhole/cut point for removal – field screened

No petroleum hydrocarbon staining or odor observed

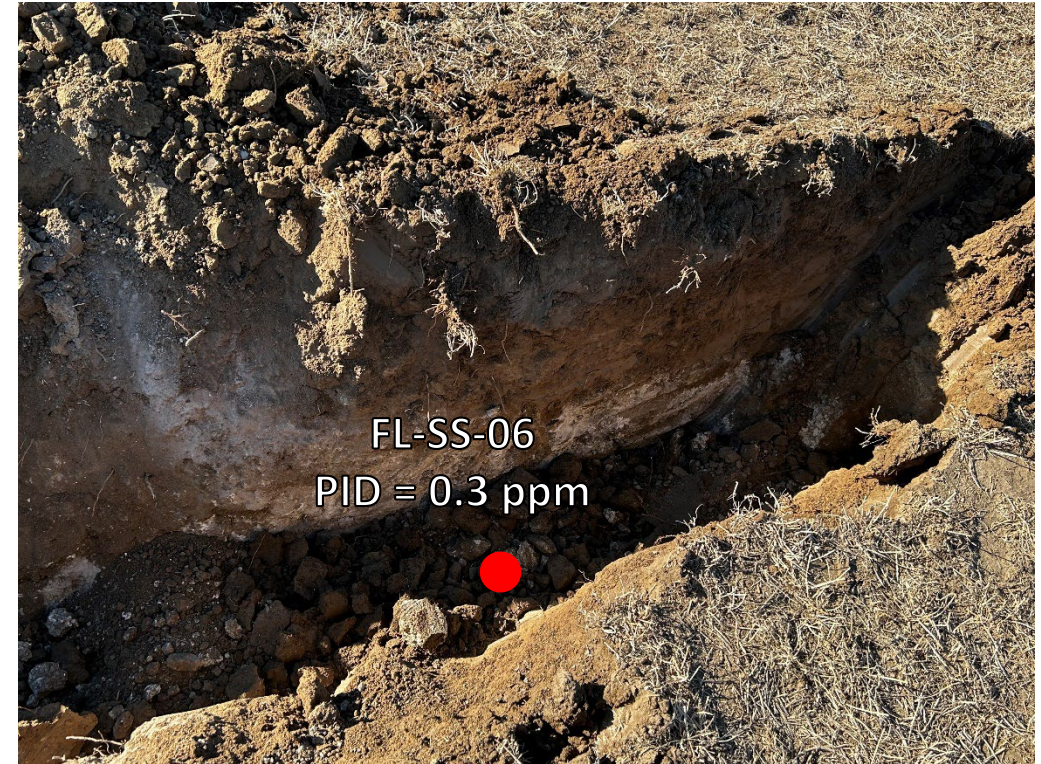


## Flowline Removal/Assessment – 03/09/23



Looking northeast at bellhole/cut-point for removal – lab submitted

No petroleum hydrocarbon staining or odor observed



Looking southwest at bellhole/cut point for removal – field screened

No petroleum hydrocarbon staining or odor observed

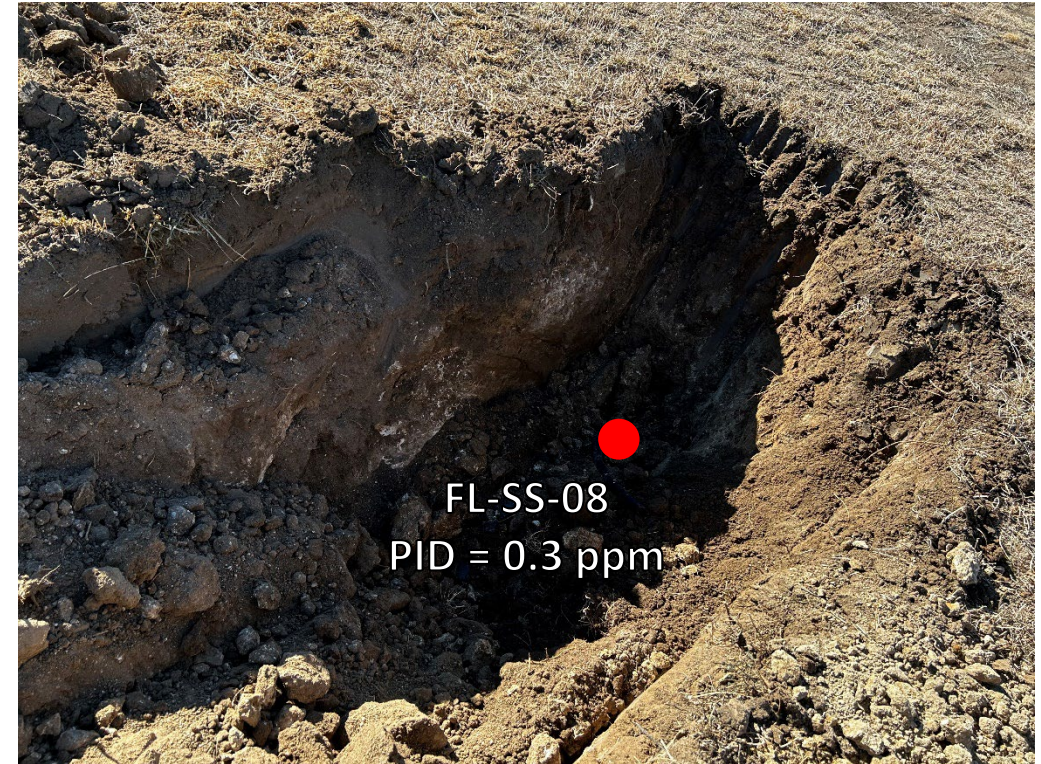


## Flowline Removal/Assessment – 03/09/23



Looking southwest at directional change – lab submitted

No petroleum hydrocarbon staining or odor observed

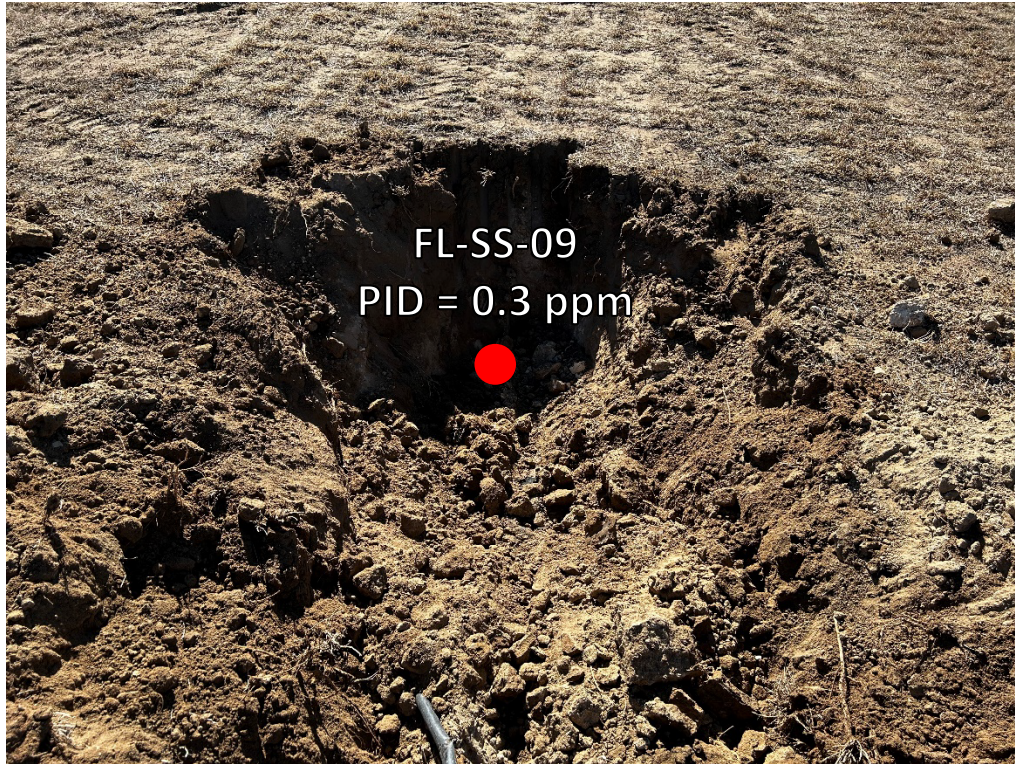


Looking southeast at directional change – lab submitted

No petroleum hydrocarbon staining or odor observed



## Flowline Removal/Assessment – 03/09/23



Looking south at bellhole/cut point for removal – field screened

No petroleum hydrocarbon staining or odor observed



Looking south at bellhole/cut point for removal – field screened

No petroleum hydrocarbon staining or odor observed

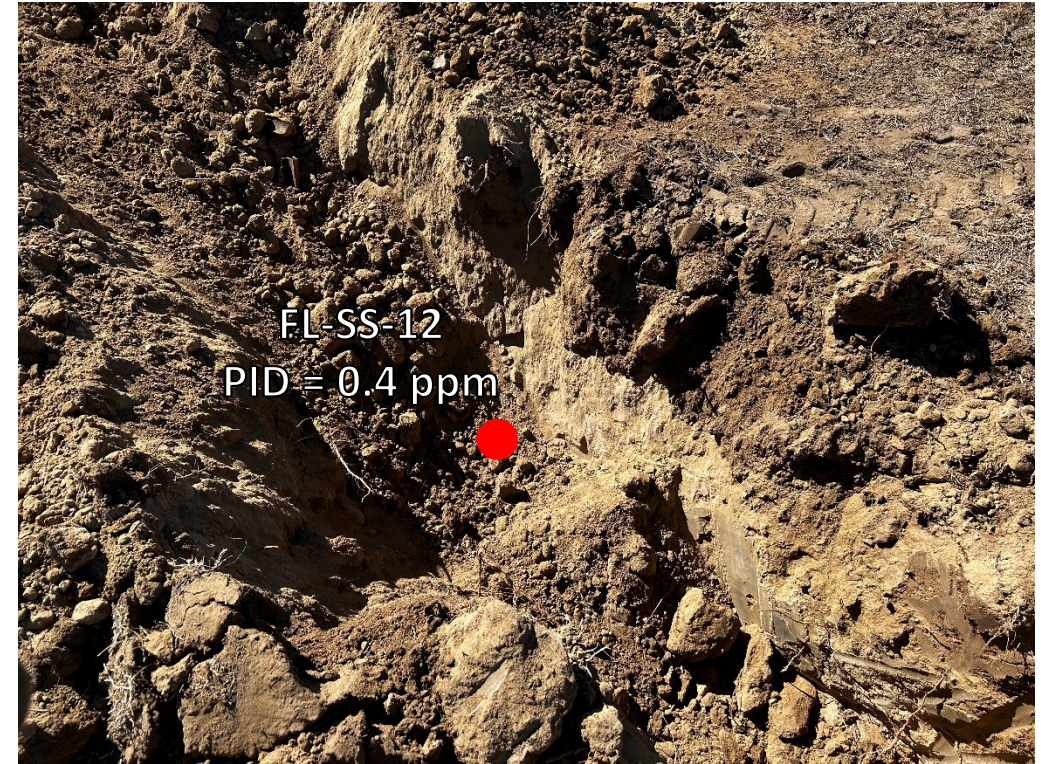


## Flowline Removal/Assessment – 03/09/23



Looking southwest at bellhole/cut point for removal – field screened

No petroleum hydrocarbon staining or odor observed



Looking southwest at bellhole/cut point for removal – field screened

No petroleum hydrocarbon staining or odor observed



## Flowline Removal/Assessment – 03/09/23



Looking southwest at bellhole/cut point for removal – field screened

No petroleum hydrocarbon staining or odor observed

## **ATTACHMENT B**

### **Laboratory Analytical Reports**



March 28, 2023

Eagle Environmental Consulting, LLC

Martin C Eckert III

8000 W 44th Ave

Wheat Ridge CO 80033

Project Name - Noble - Stephenson #6-31

Project Number - [none]

Attached are your analytical results for Noble - Stephenson #6-31 received by Origins Laboratory, Inc. March 09, 2023. This project is associated with Origins project number Y303237-01.

The analytical results in the following report were analyzed under the guidelines of EPA Methods. These methods are identified as follows; "SW" are defined in SW-846, "EPA" are defined in 40CFR part 136 and "SM" are defined in the most current revision of Standard Methods For the Examination of Water and Wastewater.

The analytical results apply specifically to the samples and analyses specified per the attached Chain of Custody. As such, this report shall not be reproduced except in full, without the written approval of Origin's laboratory.

Unless otherwise noted, the analytical results for all soil samples are reported on a wet weight basis. All analytical analyses were performed under NELAP guidelines unless noted by a data qualifier.

Any holding time exceedances, deviations from the method specifications or deviations from Origins Laboratory's Standard Operating Procedures are outlined in the case narrative.

Thank you for selecting Origins for your analytical needs. Please contact us with any questions concerning this report, or if we can help with anything at all.

Origins Laboratory, Inc.  
303.433.1322  
o-squad@oelabinc.com



1725 Elk Place, Denver, CO 80211 | Phone: 303.433.1322 | Fax: 303.265.9645

Eagle Environmental Consulting, LLC  
8000 W 44th Ave  
Wheat Ridge CO 80033

Martin C Eckert III  
Project Number: [none]  
Project: Noble - Stephenson #6-31

## CROSS REFERENCE REPORT

Sample ID	Laboratory ID	Matrix	Date Sampled	Date Received
FL-SS-01@3'	Y303237-01	Soil	March 9, 2023 8:05	03/09/2023 13:15
FL-SS-05@3'	Y303237-02	Soil	March 9, 2023 8:25	03/09/2023 13:15
FL-SS-07@3'	Y303237-03	Soil	March 9, 2023 8:55	03/09/2023 13:15
FL-SS-08@3'	Y303237-04	Soil	March 9, 2023 9:10	03/09/2023 13:15

### Chain of Custody Modification Request

On 3/20/2023, Grace Congdon from Eagle Environmental contacted Jordan Bynon via email regarding Y303237 requesting that Table 915 Metals be added to FL-SS-01@3' and FL-SS-05@3'.

Requested modifications to the chain of custody were made by Jordan Bynon on 3/20/2023.

Origins Laboratory, Inc.



*The results in this report apply to the samples analyzed in accordance with the chain of custody document. This analytical report must be reproduced in its entirety.*

Jordan A. Bynon, Project Manager







Eagle Environmental Consulting, LLC  
8000 W 44th Ave  
Wheat Ridge CO 80033

Martin C Eckert III  
Project Number: [none]  
Project: Noble - Stephenson #6-31

Origins Laboratory

F-012207-01-R1  
Effective Date: 01/09/12

## Sample Receipt Checklist

Origins Work Order: 4303237

Client: Eagle

Client Project ID: Stephenson #6-31

Checklist Completed by: EHS/de

Shipped Via: HO  
(UPS, FedEx, Hand Delivered, Pick-up, etc.)

Date/time completed: 3/9/23

Airbill #: NA

Matrix(s) Received: (Check all that apply): X Soil/Solid        Water        Other:       

Cooler Number/Temperature: 1/2.0°C        °C        °C (Describe)        °C

Thermometer ID: TOO4

Requirement Description	Yes	No	N/A	Comments (if any)
If samples require cooling, was the temperature between 0°C to ≤ 6°C <sup>(1)</sup> ?	<input checked="" type="checkbox"/>	<input type="checkbox"/>	<input type="checkbox"/>	
Is there ice present (document if blue ice is used)	<input checked="" type="checkbox"/>	<input type="checkbox"/>	<input type="checkbox"/>	
Are custody seals present on cooler? (If so, document in comments if they are signed and dated, broken or intact)	<input type="checkbox"/>	<input checked="" type="checkbox"/>	<input type="checkbox"/>	
Are custody seals present on each sample container? (If so, document in comments if they are signed and dated, broken or intact)	<input type="checkbox"/>	<input checked="" type="checkbox"/>	<input type="checkbox"/>	
Were all samples received intact <sup>(1)</sup> ?	<input checked="" type="checkbox"/>	<input type="checkbox"/>	<input type="checkbox"/>	
Was adequate sample volume provided <sup>(1)</sup> ?	<input checked="" type="checkbox"/>	<input type="checkbox"/>	<input type="checkbox"/>	
Are short holding time analytes or samples with HTs due within 48 hours present <sup>(1)</sup> ?	<input type="checkbox"/>	<input checked="" type="checkbox"/>	<input type="checkbox"/>	
Is a chain-of-custody (COC) present and filled out completely <sup>(1)</sup> ?	<input checked="" type="checkbox"/>	<input type="checkbox"/>	<input type="checkbox"/>	
Does the COC agree with the number and type of sample bottles received <sup>(1)</sup> ?	<input checked="" type="checkbox"/>	<input type="checkbox"/>	<input type="checkbox"/>	
Do the sample IDs on the bottle labels match the COC <sup>(1)</sup> ?	<input checked="" type="checkbox"/>	<input type="checkbox"/>	<input type="checkbox"/>	
Is the COC properly relinquished by the client with date and time recorded <sup>(1)</sup> ?	<input checked="" type="checkbox"/>	<input type="checkbox"/>	<input type="checkbox"/>	
For volatiles in water – is there headspace (> ¼ inch bubble) present? If yes, contact client and note in narrative.	<input type="checkbox"/>	<input type="checkbox"/>	<input checked="" type="checkbox"/>	
Are samples preserved that require preservation and was it checked <sup>(1)</sup> ? (note ID of confirmation instrument used in comments) / (preservation is not confirmed for subcontracted analyses in order to insure sample integrity)/(pH < 2 for samples preserved with HNO <sub>3</sub> , HCL, H <sub>2</sub> SO <sub>4</sub> ) / (pH > 10 for samples preserved with NaAsO <sub>2</sub> +NaOH, ZnAc+NaOH)	<input type="checkbox"/>	<input type="checkbox"/>	<input checked="" type="checkbox"/>	
Additional Comments (if any):				

<sup>(1)</sup> If NO, then contact the client before proceeding with analysis and note date/time and person contacted as well as the corrective action to in the additional comments (above) and the case narrative.

Reviewed by (Project Manager) [Signature]

Date/Time Reviewed 3/10/23

Origins Laboratory, Inc.

[Signature]

The results in this report apply to the samples analyzed in accordance with the chain of custody document. This analytical report must be reproduced in its entirety.

Eagle Environmental Consulting, LLC  
8000 W 44th Ave  
Wheat Ridge CO 80033

Martin C Eckert III  
Project Number: [none]  
Project: Noble - Stephenson #6-31

FL-SS-01@3'

3/9/2023 8:05:00AM

Analyte	Result	Min Detection Limit	Reporting Limit	Units	Dilution	Batch	Prepared	Analyzed	Notes
---------	--------	---------------------	-----------------	-------	----------	-------	----------	----------	-------

**Origins Laboratory, Inc.**  
**Y303237-01 (Soil)**

**Boron (DTPA Sorbitol)**

Boron	0.591	0.100	mg/L	1	B3C1005	03/10/2023	03/14/2023	
-------	-------	-------	------	---	---------	------------	------------	--

**DRO/ORO by EPA 8015D**

Diesel (C10-C28)	ND	25.0	mg/kg	1	B3C1001	03/10/2023	03/14/2023	U
Residual Range Organics (C28-C40)	ND	100	"	"	"	"	"	U

Surrogate: o-Terphenyl	87.8 %	50-150			"	"	"	
------------------------	--------	--------	--	--	---	---	---	--

**GBTEX+TMBs by 8260D**

1,2,4-Trimethylbenzene	ND	0.00200	mg/kg	1	B3C0928	03/09/2023	03/12/2023	U
1,3,5-Trimethylbenzene	ND	0.00200	"	"	"	"	"	U
Benzene	ND	0.00200	"	"	"	"	"	U
Ethylbenzene	ND	0.00200	"	"	"	"	"	U
Toluene	ND	0.00200	"	"	"	"	"	U
Xylenes, total	ND	0.00200	"	"	"	"	"	U
Gasoline Range Hydrocarbons	ND	0.200	"	"	"	"	"	U

Surrogate: 1,2-Dichloroethane-d4	88.0 %	70-130			"	"	"	
----------------------------------	--------	--------	--	--	---	---	---	--

Origins Laboratory, Inc.



The results in this report apply to the samples analyzed in accordance with the chain of custody document. This analytical report must be reproduced in its entirety.

Eagle Environmental Consulting, LLC  
8000 W 44th Ave  
Wheat Ridge CO 80033

Martin C Eckert III  
Project Number: [none]  
Project: Noble - Stephenson #6-31

FL-SS-01@3'

3/9/2023 8:05:00AM

Analyte	Result	Min Detection Limit	Reporting Limit	Units	Dilution	Batch	Prepared	Analyzed	Notes
---------	--------	---------------------	-----------------	-------	----------	-------	----------	----------	-------

Origins Laboratory, Inc.  
Y303237-01 (Soil)

## GBTEX+TMBs by 8260D

Surrogate: Toluene-d8	90.7 %	70-130	B3C09 28	03/09/2023	03/12/2023
Surrogate: 4-Bromofluorobenzene	71.7 %	70-130	"	"	"

## Metals by Saturated Paste by EPA 6010

Calcium	26.5	0.499	meq/L	10	[CALC]	03/13/2023	03/14/2023
Magnesium	11.2	0.823	"	"	"	"	"
Sodium	4.00	0.435	"	"	"	"	"

## PAH by 8270D SIM

1-Methylnaphthalene	0.00804	0.00109	0.00201	mg/Kg	1	L669818	03/15/2023	03/15/2023
2-Methylnaphthalene	0.0148	0.00194	0.00201	"	"	"	"	"
Acenaphthene	0.0642	0.000304	0.00067	"	"	"	"	"
Anthracene	0.13	0.000334	0.00067	"	"	"	"	"
Benzo(a)anthracene	0.13	0.000493	0.00067	"	"	"	"	"
Benzo(a)pyrene	0.09	0.000468	0.00067	"	"	"	"	"
Benzo(b)fluoranthene	0.0879	0.000585	0.00067	"	"	"	"	"
Benzo(k)fluoranthene	0.0655	0.000437	0.00067	"	"	"	"	"
Chrysene	0.133	0.000624	0.00067	"	"	"	"	"
Dibenz(a,h)anthracene	0.0238	0.000614	0.00067	"	"	"	"	"
Fluoranthene	0.324	0.000394	0.00067	"	"	"	"	"
Fluorene	0.0946	0.000286	0.00067	"	"	"	"	"
Indeno(1,2,3-cd)pyrene	0.0763	0.000627	0.00067	"	"	"	"	"

Origins Laboratory, Inc.



The results in this report apply to the samples analyzed in accordance with the chain of custody document. This analytical report must be reproduced in its entirety.

Eagle Environmental Consulting, LLC  
8000 W 44th Ave  
Wheat Ridge CO 80033

Martin C Eckert III  
Project Number: [none]  
Project: Noble - Stephenson #6-31

FL-SS-01@3'

3/9/2023 8:05:00AM

Analyte	Result	Min Detection Limit	Reporting Limit	Units	Dilution	Batch	Prepared	Analyzed	Notes
---------	--------	---------------------	-----------------	-------	----------	-------	----------	----------	-------

Waypoint Analytical, LLC.  
Y303237-01 (Soil)

## PAH by 8270D SIM

Naphthalene	0.0391	0.00145	0.00201	mg/Kg	1	L669818	03/15/2023	03/15/2023
Pyrene	0.234	0.000643	0.00067	"	"	"	"	"

Surrogate: 2-Fluorobiphenyl	54.1 %		33-115			"	"	"
Surrogate: 4-Terphenyl-d14	57.4 %		33-122			"	"	"
Surrogate: Nitrobenzene-d5	52.3 %		29-110			"	"	"

## pH in Soil by 9045D

pH	8.06			pH Units	1	B3C1315	03/13/2023	03/14/2023
----	------	--	--	----------	---	---------	------------	------------

## SAR by 20B Saturated Paste

SAR	0.922			SAR	1	B3C1306	03/13/2023	03/14/2023
-----	-------	--	--	-----	---	---------	------------	------------

## Specific Conductance Mod. 9050A

Specific Conductance (EC)	2.60		0.00500	mmhos/cm	1	B3C1315	03/13/2023	03/14/2023
---------------------------	------	--	---------	----------	---	---------	------------	------------

## Table 915 metals by EPA 6020B

Arsenic	4.44		0.0834	mg/kg	10	B3C2018	03/20/2023	03/21/2023
Barium	127		8.34	"	"	"	"	"
Cadmium	0.197		0.0834	"	"	"	"	"

Origins Laboratory, Inc.



The results in this report apply to the samples analyzed in accordance with the chain of custody document. This analytical report must be reproduced in its entirety.



Eagle Environmental Consulting, LLC  
8000 W 44th Ave  
Wheat Ridge CO 80033

Martin C Eckert III  
Project Number: [none]  
Project: Noble - Stephenson #6-31

FL-SS-01@3'

3/9/2023 8:05:00AM

Analyte	Result	Min Detection Limit	Reporting Limit	Units	Dilution	Batch	Prepared	Analyzed	Notes
---------	--------	---------------------	-----------------	-------	----------	-------	----------	----------	-------

**Origins Laboratory, Inc.**  
**Y303237-01 (Soil)**

**Table 915 metals by EPA 6020B**

Copper	17.9	8.34	mg/kg	10	B3C2018	03/20/2023	03/21/2023
Lead	14.5	8.34	"	"	"	"	"
Nickel	11.9	8.34	"	"	"	"	"
Selenium	0.247	0.0834	"	"	"	"	"
Silver	ND	0.0834	"	"	"	"	"
Zinc	ND	83.4	"	"	"	"	"

**Total Metals by 7196A**

Chromium, Hexavalent	ND	1.24	2.55	mg/Kg	1	L672502	03/09/2023	03/28/2023
----------------------	----	------	------	-------	---	---------	------------	------------

Origins Laboratory, Inc.



*The results in this report apply to the samples analyzed in accordance with the chain of custody document. This analytical report must be reproduced in its entirety.*

Eagle Environmental Consulting, LLC  
8000 W 44th Ave  
Wheat Ridge CO 80033

Martin C Eckert III  
Project Number: [none]  
Project: Noble - Stephenson #6-31

FL-SS-05@3'

3/9/2023 8:25:00AM

Analyte	Result	Min Detection Limit	Reporting Limit	Units	Dilution	Batch	Prepared	Analyzed	Notes
---------	--------	---------------------	-----------------	-------	----------	-------	----------	----------	-------

**Origins Laboratory, Inc.**  
**Y303237-02 (Soil)**

**Boron (DTPA Sorbitol)**

Boron	0.529	0.100	mg/L	1	B3C1005	03/10/2023	03/14/2023	
-------	-------	-------	------	---	---------	------------	------------	--

**DRO/ORO by EPA 8015D**

Diesel (C10-C28)	ND	25.0	mg/kg	1	B3C1001	03/10/2023	03/14/2023	U
Residual Range Organics (C28-C40)	ND	100	"	"	"	"	"	U

Surrogate: o-Terphenyl	88.4 %	50-150			"	"	"
------------------------	--------	--------	--	--	---	---	---

**GBTEX+TMBs by 8260D**

1,2,4-Trimethylbenzene	ND	0.00200	mg/kg	1	B3C0928	03/09/2023	03/12/2023	U
1,3,5-Trimethylbenzene	ND	0.00200	"	"	"	"	"	U
Benzene	ND	0.00200	"	"	"	"	"	U
Ethylbenzene	ND	0.00200	"	"	"	"	"	U
Toluene	ND	0.00200	"	"	"	"	"	U
Xylenes, total	ND	0.00200	"	"	"	"	"	U
Gasoline Range Hydrocarbons	ND	0.200	"	"	"	"	"	U

Surrogate: 1,2-Dichloroethane-d4	88.2 %	70-130			"	"	"
----------------------------------	--------	--------	--	--	---	---	---

Origins Laboratory, Inc.



The results in this report apply to the samples analyzed in accordance with the chain of custody document. This analytical report must be reproduced in its entirety.

Eagle Environmental Consulting, LLC  
8000 W 44th Ave  
Wheat Ridge CO 80033

Martin C Eckert III  
Project Number: [none]  
Project: Noble - Stephenson #6-31

FL-SS-05@3'

3/9/2023 8:25:00AM

Analyte	Result	Min Detection Limit	Reporting Limit	Units	Dilution	Batch	Prepared	Analyzed	Notes
---------	--------	---------------------	-----------------	-------	----------	-------	----------	----------	-------

Origins Laboratory, Inc.  
Y303237-02 (Soil)

## GBTEX+TMBs by 8260D

Surrogate: Toluene-d8	91.2 %	70-130	B3C09 28	03/09/2023	03/12/2023
Surrogate: 4-Bromofluorobenzene	69.5 %	70-130	"	"	" S-GC

## Metals by Saturated Paste by EPA 6010

Calcium	3.04	0.499	meq/L	10	[CALC]	03/13/2023	03/14/2023
Magnesium	1.47	0.823	"	"	"	"	"
Sodium	1.65	0.435	"	"	"	"	"

## PAH by 8270D SIM

1-Methylnaphthalene	ND	0.00109	0.00201	mg/Kg	1	L669818	03/15/2023	03/15/2023
2-Methylnaphthalene	ND	0.00194	0.00201	"	"	"	"	"
Acenaphthene	0.00542	0.000304	0.00067	"	"	"	"	"
Anthracene	0.0153	0.000334	0.00067	"	"	"	"	"
Benzo(a)anthracene	0.0131	0.000493	0.00067	"	"	"	"	"
Benzo(a)pyrene	0.0101	0.000468	0.00067	"	"	"	"	"
Benzo(b)fluoranthene	0.0129	0.000585	0.00067	"	"	"	"	"
Benzo(k)fluoranthene	0.00454	0.000437	0.00067	"	"	"	"	"
Chrysene	0.0163	0.000624	0.00067	"	"	"	"	"
Dibenz(a,h)anthracene	0.00194	0.000614	0.00067	"	"	"	"	"
Fluoranthene	0.0441	0.000394	0.00067	"	"	"	"	"
Fluorene	0.00776	0.000286	0.00067	"	"	"	"	"
Indeno(1,2,3-cd)pyrene	0.00504	0.000627	0.00067	"	"	"	"	"

Origins Laboratory, Inc.



The results in this report apply to the samples analyzed in accordance with the chain of custody document. This analytical report must be reproduced in its entirety.

Eagle Environmental Consulting, LLC  
8000 W 44th Ave  
Wheat Ridge CO 80033

Martin C Eckert III  
Project Number: [none]  
Project: Noble - Stephenson #6-31

FL-SS-05@3'

3/9/2023 8:25:00AM

Analyte	Result	Min Detection Limit	Reporting Limit	Units	Dilution	Batch	Prepared	Analyzed	Notes
---------	--------	---------------------	-----------------	-------	----------	-------	----------	----------	-------

Waypoint Analytical, LLC.  
Y303237-02 (Soil)

## PAH by 8270D SIM

Naphthalene	0.00292	0.00145	0.00201	mg/Kg	1	L669818	03/15/2023	03/15/2023
Pyrene	0.0323	0.000643	0.00067	"	"	"	"	"

Surrogate: 2-Fluorobiphenyl	46.9 %	33-115	"	"	"
Surrogate: 4-Terphenyl-d14	52.8 %	33-122	"	"	"
Surrogate: Nitrobenzene-d5	47.9 %	29-110	"	"	"

## pH in Soil by 9045D

pH	8.19	pH Units	1	B3C1315	03/13/2023	03/14/2023
----	------	----------	---	---------	------------	------------

## SAR by 20B Saturated Paste

SAR	1.10	SAR	1	B3C1306	03/13/2023	03/14/2023
-----	------	-----	---	---------	------------	------------

## Specific Conductance Mod. 9050A

Specific Conductance (EC)	0.544	0.00500	mmhos/cm	1	B3C1315	03/13/2023	03/14/2023
---------------------------	-------	---------	----------	---	---------	------------	------------

## Table 915 metals by EPA 6020B

Arsenic	3.71	0.0918	mg/kg	10	B3C2018	03/20/2023	03/21/2023
Barium	71.8	9.18	"	"	"	"	"
Cadmium	0.180	0.0918	"	"	"	"	"

Origins Laboratory, Inc.



The results in this report apply to the samples analyzed in accordance with the chain of custody document. This analytical report must be reproduced in its entirety.



Eagle Environmental Consulting, LLC  
8000 W 44th Ave  
Wheat Ridge CO 80033

Martin C Eckert III  
Project Number: [none]  
Project: Noble - Stephenson #6-31

FL-SS-05@3'

3/9/2023 8:25:00AM

Analyte	Result	Min Detection Limit	Reporting Limit	Units	Dilution	Batch	Prepared	Analyzed	Notes
---------	--------	------------------------	--------------------	-------	----------	-------	----------	----------	-------

**Origins Laboratory, Inc.**  
**Y303237-02 (Soil)**

**Table 915 metals by EPA 6020B**

Copper	ND	9.18	mg/kg	10	B3C2018	03/20/2023	03/21/2023
Lead	ND	9.18	"	"	"	"	"
Nickel	ND	9.18	"	"	"	"	"
Selenium	0.184	0.0918	"	"	"	"	"
Silver	ND	0.0918	"	"	"	"	"
Zinc	ND	91.8	"	"	"	"	"

**Total Metals by 7196A**

Chromium, Hexavalent	ND	1.22	2.5	mg/Kg	1	L672502	03/09/2023	03/28/2023
----------------------	----	------	-----	-------	---	---------	------------	------------

Origins Laboratory, Inc.



*The results in this report apply to the samples analyzed in accordance with the chain of custody document. This analytical report must be reproduced in its entirety.*

Eagle Environmental Consulting, LLC  
8000 W 44th Ave  
Wheat Ridge CO 80033

Martin C Eckert III  
Project Number: [none]  
Project: Noble - Stephenson #6-31

FL-SS-07@3'

3/9/2023 8:55:00AM

Analyte	Result	Min Detection Limit	Reporting Limit	Units	Dilution	Batch	Prepared	Analyzed	Notes
---------	--------	---------------------	-----------------	-------	----------	-------	----------	----------	-------

**Origins Laboratory, Inc.**  
**Y303237-03 (Soil)**

**Boron (DTPA Sorbitol)**

Boron	0.431	0.100	mg/L	1	B3C1005	03/10/2023	03/14/2023	
-------	-------	-------	------	---	---------	------------	------------	--

**DRO/ORO by EPA 8015D**

Diesel (C10-C28)	ND	25.0	mg/kg	1	B3C1001	03/10/2023	03/14/2023	U
Residual Range Organics (C28-C40)	ND	100	"	"	"	"	"	U

Surrogate: o-Terphenyl	83.5 %	50-150			"	"	"	
------------------------	--------	--------	--	--	---	---	---	--

**GBTEX+TMBs by 8260D**

1,2,4-Trimethylbenzene	ND	0.00200	mg/kg	1	B3C0928	03/09/2023	03/12/2023	U
1,3,5-Trimethylbenzene	ND	0.00200	"	"	"	"	"	U
Benzene	ND	0.00200	"	"	"	"	"	U
Ethylbenzene	ND	0.00200	"	"	"	"	"	U
Toluene	ND	0.00200	"	"	"	"	"	U
Xylenes, total	ND	0.00200	"	"	"	"	"	U
Gasoline Range Hydrocarbons	ND	0.200	"	"	"	"	"	U

Surrogate: 1,2-Dichloroethane-d4	88.2 %	70-130			"	"	"	
----------------------------------	--------	--------	--	--	---	---	---	--

Origins Laboratory, Inc.



The results in this report apply to the samples analyzed in accordance with the chain of custody document. This analytical report must be reproduced in its entirety.

Eagle Environmental Consulting, LLC  
8000 W 44th Ave  
Wheat Ridge CO 80033

Martin C Eckert III  
Project Number: [none]  
Project: Noble - Stephenson #6-31

FL-SS-07@3'

3/9/2023 8:55:00AM

Analyte	Result	Min Detection Limit	Reporting Limit	Units	Dilution	Batch	Prepared	Analyzed	Notes
---------	--------	---------------------	-----------------	-------	----------	-------	----------	----------	-------

Origins Laboratory, Inc.  
Y303237-03 (Soil)

## GBTEX+TMBs by 8260D

Surrogate: Toluene-d8	90.4 %		70-130			B3C09 28	03/09/2023	03/12/2023
Surrogate: 4-Bromofluorobenzene	70.4 %		70-130			"	"	"

## Metals by Saturated Paste by EPA 6010

Calcium	4.97		0.499	meq/L	10	[CALC]	03/13/2023	03/14/2023
Magnesium	1.81		0.823	"	"	"	"	"
Sodium	2.08		0.435	"	"	"	"	"

## PAH by 8270D SIM

1-Methylnaphthalene	ND	0.00109	0.00201	mg/Kg	1	L669818	03/15/2023	03/15/2023
2-Methylnaphthalene	ND	0.00194	0.00201	"	"	"	"	"
Acenaphthene	0.00234	0.000304	0.00067	"	"	"	"	"
Anthracene	0.00639	0.000334	0.00067	"	"	"	"	"
Benzo(a)anthracene	0.00811	0.000493	0.00067	"	"	"	"	"
Benzo(a)pyrene	0.00652	0.000468	0.00067	"	"	"	"	"
Benzo(b)fluoranthene	0.00789	0.000585	0.00067	"	"	"	"	"
Benzo(k)fluoranthene	0.00294	0.000437	0.00067	"	"	"	"	"
Chrysene	0.00998	0.000624	0.00067	"	"	"	"	"
Dibenz(a,h)anthracene	0.0011	0.000614	0.00067	"	"	"	"	"
Fluoranthene	0.0271	0.000394	0.00067	"	"	"	"	"
Fluorene	0.00341	0.000286	0.00067	"	"	"	"	"
Indeno(1,2,3-cd)pyrene	0.00287	0.000627	0.00067	"	"	"	"	"

Origins Laboratory, Inc.



The results in this report apply to the samples analyzed in accordance with the chain of custody document. This analytical report must be reproduced in its entirety.



Eagle Environmental Consulting, LLC  
8000 W 44th Ave  
Wheat Ridge CO 80033

Martin C Eckert III  
Project Number: [none]  
Project: Noble - Stephenson #6-31

FL-SS-07@3'

3/9/2023 8:55:00AM

Analyte	Result	Min Detection Limit	Reporting Limit	Units	Dilution	Batch	Prepared	Analyzed	Notes
---------	--------	---------------------	-----------------	-------	----------	-------	----------	----------	-------

Waypoint Analytical, LLC.  
Y303237-03 (Soil)

## PAH by 8270D SIM

Naphthalene	0.00183	0.00145	0.00201	mg/Kg	1	L669818	03/15/2023	03/15/2023	J
Pyrene	0.0197	0.000643	0.00067	"	"	"	"	"	

Surrogate: 2-Fluorobiphenyl	51.4 %		33-115			"	"	"	
Surrogate: 4-Terphenyl-d14	59 %		33-122			"	"	"	
Surrogate: Nitrobenzene-d5	52.6 %		29-110			"	"	"	

## pH in Soil by 9045D

pH	8.18			pH Units	1	B3C1315	03/13/2023	03/14/2023	
----	------	--	--	----------	---	---------	------------	------------	--

## SAR by 20B Saturated Paste

SAR	1.13			SAR	1	B3C1306	03/13/2023	03/14/2023	
-----	------	--	--	-----	---	---------	------------	------------	--

## Specific Conductance Mod. 9050A

Specific Conductance (EC)	0.708		0.00500	mmhos/cm	1	B3C1315	03/13/2023	03/14/2023	
---------------------------	-------	--	---------	----------	---	---------	------------	------------	--

Origins Laboratory, Inc.



The results in this report apply to the samples analyzed in accordance with the chain of custody document. This analytical report must be reproduced in its entirety.

Eagle Environmental Consulting, LLC  
8000 W 44th Ave  
Wheat Ridge CO 80033

Martin C Eckert III  
Project Number: [none]  
Project: Noble - Stephenson #6-31

FL-SS-08@3'

3/9/2023 9:10:00AM

Analyte	Result	Min Detection Limit	Reporting Limit	Units	Dilution	Batch	Prepared	Analyzed	Notes
---------	--------	---------------------	-----------------	-------	----------	-------	----------	----------	-------

**Origins Laboratory, Inc.**  
**Y303237-04 (Soil)**

**Boron (DTPA Sorbitol)**

Boron	0.290	0.100	mg/L	1	B3C1005	03/10/2023	03/14/2023	
-------	-------	-------	------	---	---------	------------	------------	--

**DRO/ORO by EPA 8015D**

Diesel (C10-C28)	ND	25.0	mg/kg	1	B3C1001	03/10/2023	03/14/2023	U
Residual Range Organics (C28-C40)	ND	100	"	"	"	"	"	U

Surrogate: o-Terphenyl	88.1 %	50-150	"	"	"	"	"
------------------------	--------	--------	---	---	---	---	---

**GBTEX+TMBs by 8260D**

1,2,4-Trimethylbenzene	ND	0.00200	mg/kg	1	B3C0928	03/09/2023	03/12/2023	U
1,3,5-Trimethylbenzene	ND	0.00200	"	"	"	"	"	U
Benzene	ND	0.00200	"	"	"	"	"	U
Ethylbenzene	ND	0.00200	"	"	"	"	"	U
Toluene	ND	0.00200	"	"	"	"	"	U
Xylenes, total	ND	0.00200	"	"	"	"	"	U
Gasoline Range Hydrocarbons	ND	0.200	"	"	"	"	"	U

Surrogate: 1,2-Dichloroethane-d4	89.6 %	70-130	"	"	"	"	"
----------------------------------	--------	--------	---	---	---	---	---

Origins Laboratory, Inc.



The results in this report apply to the samples analyzed in accordance with the chain of custody document. This analytical report must be reproduced in its entirety.

Eagle Environmental Consulting, LLC  
8000 W 44th Ave  
Wheat Ridge CO 80033

Martin C Eckert III  
Project Number: [none]  
Project: Noble - Stephenson #6-31

FL-SS-08@3'

3/9/2023 9:10:00AM

Analyte	Result	Min Detection Limit	Reporting Limit	Units	Dilution	Batch	Prepared	Analyzed	Notes
---------	--------	---------------------	-----------------	-------	----------	-------	----------	----------	-------

Origins Laboratory, Inc.  
Y303237-04 (Soil)

## GBTEX+TMBs by 8260D

Surrogate: Toluene-d8	89.0 %	70-130	B3C09 28	03/09/2023	03/12/2023
Surrogate: 4-Bromofluorobenzene	71.0 %	70-130	"	"	"

## Metals by Saturated Paste by EPA 6010

Calcium	3.30	0.499	meq/L	10	[CALC]	03/13/2023	03/14/2023
Magnesium	2.20	0.823	"	"	"	"	"
Sodium	1.06	0.435	"	"	"	"	"

## PAH by 8270D SIM

1-Methylnaphthalene	ND	0.00109	0.00201	mg/Kg	1	L669818	03/15/2023	03/15/2023
2-Methylnaphthalene	ND	0.00194	0.00201	"	"	"	"	"
Acenaphthene	0.000311	0.000304	0.00067	"	"	"	"	J
Anthracene	0.000662	0.000334	0.00067	"	"	"	"	J
Benzo(a)anthracene	0.000975	0.000493	0.00067	"	"	"	"	"
Benzo(a)pyrene	0.000989	0.000468	0.00067	"	"	"	"	"
Benzo(b)fluoranthene	0.00115	0.000585	0.00067	"	"	"	"	"
Benzo(k)fluoranthene	0.000437	0.000437	0.00067	"	"	"	"	J
Chrysene	0.00136	0.000624	0.00067	"	"	"	"	"
Dibenz(a,h)anthracene	ND	0.000614	0.00067	"	"	"	"	"
Fluoranthene	0.00291	0.000394	0.00067	"	"	"	"	"
Fluorene	0.00031	0.000286	0.00067	"	"	"	"	J

Origins Laboratory, Inc.



The results in this report apply to the samples analyzed in accordance with the chain of custody document. This analytical report must be reproduced in its entirety.



Eagle Environmental Consulting, LLC  
8000 W 44th Ave  
Wheat Ridge CO 80033

Martin C Eckert III  
Project Number: [none]  
Project: Noble - Stephenson #6-31

FL-SS-08@3'

3/9/2023 9:10:00AM

Analyte	Result	Min Detection Limit	Reporting Limit	Units	Dilution	Batch	Prepared	Analyzed	Notes
---------	--------	---------------------	-----------------	-------	----------	-------	----------	----------	-------

Waypoint Analytical, LLC.  
Y303237-04 (Soil)

## PAH by 8270D SIM

Indeno(1,2,3-cd)pyrene	ND	0.000627	0.00067	mg/Kg	1	L669818	03/15/2023	03/15/2023
Naphthalene	ND	0.00145	0.00201	"	"	"	"	"
Pyrene	0.00232	0.000643	0.00067	"	"	"	"	"

Surrogate: 2-Fluorobiphenyl	47.6 %	33-115	"	"	"
Surrogate: 4-Terphenyl-d14	58.8 %	33-122	"	"	"
Surrogate: Nitrobenzene-d5	48.2 %	29-110	"	"	"

## pH in Soil by 9045D

pH	8.30	pH Units	1	B3C1315	03/13/2023	03/14/2023
----	------	----------	---	---------	------------	------------

## SAR by 20B Saturated Paste

SAR	0.642	SAR	1	B3C1306	03/13/2023	03/14/2023
-----	-------	-----	---	---------	------------	------------

## Specific Conductance Mod. 9050A

Specific Conductance (EC)	0.562	0.00500	mmhos/cm	1	B3C1315	03/13/2023	03/14/2023
---------------------------	-------	---------	----------	---	---------	------------	------------

Origins Laboratory, Inc.



The results in this report apply to the samples analyzed in accordance with the chain of custody document. This analytical report must be reproduced in its entirety.

Eagle Environmental Consulting, LLC  
8000 W 44th Ave  
Wheat Ridge CO 80033

Martin C Eckert III  
Project Number: [none]  
Project: Noble - Stephenson #6-31

**Volatile Organic Compounds by GC/MS SW846 8260D - Quality Control**  
**Origins Laboratory, Inc.**

Analyte	Result	Reporting Limit	Units	Spike Level	Source Result	%REC	%REC Limits	RPD	RPD Limit	Notes
<b>Batch B3C0928 - EPA 5030 (soil)</b>										
<b>Blank (B3C0928-BLK1)</b>					Prepared: 03/09/2023 Analyzed: 03/11/2023					
1,2,4-Trimethylbenzene	ND	0.00200	mg/kg							U
1,3,5-Trimethylbenzene	ND	0.00200	"							U
Benzene	ND	0.00200	"							U
Ethylbenzene	ND	0.00200	"							U
Naphthalene	ND	0.00380	"							U
Toluene	ND	0.00200	"							U
Xylenes, total	ND	0.00200	"							U
Gasoline Range Hydrocarbons	ND	0.200	"							U
Surrogate: 1,2-Dichloroethane-d4	0.11		"	0.125		86.4	70-130			
Surrogate: Toluene-d8	0.11		"	0.125		91.7	70-130			
Surrogate: 4-Bromofluorobenzene	0.090		"	0.125		72.3	70-130			

Origins Laboratory, Inc.



The results in this report apply to the samples analyzed in accordance with the chain of custody document. This analytical report must be reproduced in its entirety.

Eagle Environmental Consulting, LLC  
8000 W 44th Ave  
Wheat Ridge CO 80033

Martin C Eckert III  
Project Number: [none]  
Project: Noble - Stephenson #6-31

**Volatile Organic Compounds by GC/MS SW846 8260D - Quality Control**  
**Origins Laboratory, Inc.**

Analyte	Result	Reporting Limit	Units	Spike Level	Source Result	%REC	%REC Limits	RPD	RPD Limit	Notes
<b>Batch B3C0928 - EPA 5030 (soil)</b>										
<b>LCS (B3C0928-BS1)</b>					Prepared: 03/09/2023 Analyzed: 03/11/2023					
1,2,4-Trimethylbenzene	0.0938	0.00200	mg/kg	0.100		93.8	70-130			
1,3,5-Trimethylbenzene	0.0949	0.00200	"	0.100		94.9	70-130			
Benzene	0.107	0.00200	"	0.100		107	70-130			
Ethylbenzene	0.0844	0.00200	"	0.100		84.4	70-130			
Naphthalene	0.105	0.00380	"	0.100		105	70-130			
Toluene	0.0959	0.00200	"	0.100		95.9	70-130			
o-Xylene	0.0813	0.00200	"	0.100		81.3	70-130			
m,p-Xylene	0.191	0.00400	"	0.200		95.5	70-130			
Surrogate: 1,2-Dichloroethane-d4	0.098		"	0.125		78.1	70-130			
Surrogate: Toluene-d8	0.11		"	0.125		91.2	70-130			
Surrogate: 4-Bromofluorobenzene	0.098		"	0.125		78.2	70-130			

Origins Laboratory, Inc.



*The results in this report apply to the samples analyzed in accordance with the chain of custody document. This analytical report must be reproduced in its entirety.*



Eagle Environmental Consulting, LLC  
8000 W 44th Ave  
Wheat Ridge CO 80033

Martin C Eckert III  
Project Number: [none]  
Project: Noble - Stephenson #6-31

**Volatile Organic Compounds by GC/MS SW846 8260D - Quality Control**  
**Origins Laboratory, Inc.**

Analyte	Result	Reporting Limit	Units	Spike Level	Source Result	%REC	%REC Limits	RPD	RPD Limit	Notes
<b>Batch B3C0928 - EPA 5030 (soil)</b>										
<b>Matrix Spike (B3C0928-MS1)</b>		<b>Source: Y303227-01</b>			Prepared: 03/09/2023 Analyzed: 03/11/2023					
1,2,4-Trimethylbenzene	1.59	0.00200	mg/kg	0.100	2.23	NR	70-130			QM-4X
1,3,5-Trimethylbenzene	2.00	0.00200	"	0.100	9.75	NR	70-130			QM-4X
Benzene	0.101	0.00200	"	0.100	0.00322	97.9	70-130			
Ethylbenzene	0.110	0.00200	"	0.100	0.0143	96.1	70-130			
Naphthalene	0.173	0.00380	"	0.100	0.0803	92.7	70-130			
Toluene	0.113	0.00200	"	0.100	0.00240	111	70-130			
o-Xylene	3.49	0.00200	"	0.100	11.5	NR	70-130			QM-4X
m,p-Xylene	1.50	0.00400	"	0.200	0.433	533	70-130			QM-4X
Surrogate: 1,2-Dichloroethane-d4	0.11		"	0.125		84.0	70-130			
Surrogate: Toluene-d8	0.90		"	0.125		721	70-130			QM-07
Surrogate: 4-Bromofluorobenzene	1.1		"	0.125		909	70-130			QM-07

Origins Laboratory, Inc.



The results in this report apply to the samples analyzed in accordance with the chain of custody document. This analytical report must be reproduced in its entirety.

Eagle Environmental Consulting, LLC  
8000 W 44th Ave  
Wheat Ridge CO 80033

Martin C Eckert III  
Project Number: [none]  
Project: Noble - Stephenson #6-31

## Volatile Organic Compounds by GC/MS SW846 8260D - Quality Control

### Origins Laboratory, Inc.

Analyte	Result	Reporting Limit	Units	Spike Level	Source Result	%REC	%REC Limits	RPD	RPD Limit	Notes
Batch B3C0928 - EPA 5030 (soil)										
Matrix Spike Dup (B3C0928-MSD1)		Source: Y303227-01			Prepared: 03/09/2023 Analyzed: 03/11/2023					
1,2,4-Trimethylbenzene	1.85	0.00200	mg/kg	0.100	2.23	NR	70-130	15.4	20	QM-4X
1,3,5-Trimethylbenzene	3.88	0.00200	"	0.100	9.75	NR	70-130	63.8	20	QM-4X
Benzene	0.0917	0.00200	"	0.100	0.00322	88.5	70-130	9.75	20	
Ethylbenzene	0.134	0.00200	"	0.100	0.0143	120	70-130	19.5	20	
Naphthalene	0.213	0.00380	"	0.100	0.0803	133	70-130	20.9	20	QM-07
Toluene	0.118	0.00200	"	0.100	0.00240	116	70-130	4.68	20	
o-Xylene	8.19	0.00200	"	0.100	11.5	NR	70-130	80.5	20	QM-4X
m,p-Xylene	2.13	0.00400	"	0.200	0.433	849	70-130	34.9	20	QM-4X
Surrogate: 1,2-Dichloroethane-d4	0.12		"	0.125		96.8	70-130			
Surrogate: Toluene-d8	2.1		"	0.125		NR	70-130			QM-07
Surrogate: 4-Bromofluorobenzene	2.5		"	0.125		NR	70-130			QM-07

Origins Laboratory, Inc.



The results in this report apply to the samples analyzed in accordance with the chain of custody document. This analytical report must be reproduced in its entirety.

Eagle Environmental Consulting, LLC  
8000 W 44th Ave  
Wheat Ridge CO 80033

Martin C Eckert III  
Project Number: [none]  
Project: Noble - Stephenson #6-31

**Volatile Organic Compounds by GC/MS SW846 8260D - Quality Control**  
**Origins Laboratory, Inc.**

Analyte	Result	Reporting Limit	Units	Spike Level	Source Result	%REC	%REC Limits	RPD	RPD Limit	Notes
Batch B3C1001 - EPA 3580										
Blank (B3C1001-BLK1)					Prepared: 03/10/2023 Analyzed: 03/14/2023					
Diesel (C10-C28)	ND	25.0	mg/kg							U
Residual Range Organics (C28-C40)	ND	100	"							U
Surrogate: o-Terphenyl	23		"	24.9		90.8	50-150			

Origins Laboratory, Inc.



*The results in this report apply to the samples analyzed in accordance with the chain of custody document. This analytical report must be reproduced in its entirety.*

Jordan A. Bynon, Project Manager



Eagle Environmental Consulting, LLC  
8000 W 44th Ave  
Wheat Ridge CO 80033

Martin C Eckert III  
Project Number: [none]  
Project: Noble - Stephenson #6-31

## Extractable Petroleum Hydrocarbons by 8015D - Quality Control Origins Laboratory, Inc.

Analyte	Result	Reporting Limit	Units	Spike Level	Source Result	%REC	%REC Limits	RPD	RPD Limit	Notes
Batch B3C1001 - EPA 3580										
LCS (B3C1001-BS1)					Prepared: 03/10/2023 Analyzed: 03/14/2023					
Diesel (C10-C28)	855	50.0	mg/kg	1000		85.5	70-130			
Residual Range Organics (C28-C40)	889	200	"	1000		88.9	70-130			
Surrogate: o-Terphenyl	47		"	49.8		94.4	50-150			

Origins Laboratory, Inc.



*The results in this report apply to the samples analyzed in accordance with the chain of custody document. This analytical report must be reproduced in its entirety.*

Eagle Environmental Consulting, LLC  
8000 W 44th Ave  
Wheat Ridge CO 80033

Martin C Eckert III  
Project Number: [none]  
Project: Noble - Stephenson #6-31

Extractable Petroleum Hydrocarbons by 8015D - Quality Control  
Origins Laboratory, Inc.

Analyte	Result	Reporting Limit	Units	Spike Level	Source Result	%REC	%REC Limits	RPD	RPD Limit	Notes
---------	--------	-----------------	-------	-------------	---------------	------	-------------	-----	-----------	-------

Batch B3C1001 - EPA 3580

Matrix Spike (B3C1001-MS1)		Source: Y303237-01			Prepared: 03/10/2023 Analyzed: 03/14/2023					
Diesel (C10-C28)	846	50.0	mg/kg	1000	ND	84.6	70-130			
Residual Range Organics (C28-C40)	972	200	"	1000	ND	97.2	70-130			
Surrogate: o-Terphenyl	42		"	49.8		84.1	50-150			

Origins Laboratory, Inc.



The results in this report apply to the samples analyzed in accordance with the chain of custody document. This analytical report must be reproduced in its entirety.

Jordan A. Bynon, Project Manager

Eagle Environmental Consulting, LLC  
8000 W 44th Ave  
Wheat Ridge CO 80033

Martin C Eckert III  
Project Number: [none]  
Project: Noble - Stephenson #6-31

## Extractable Petroleum Hydrocarbons by 8015D - Quality Control Origins Laboratory, Inc.

Analyte	Result	Reporting Limit	Units	Spike Level	Source Result	%REC	%REC Limits	RPD	RPD Limit	Notes
Batch B3C1001 - EPA 3580										
Matrix Spike Dup (B3C1001-MSD1)		Source: Y303237-01			Prepared: 03/10/2023 Analyzed: 03/14/2023					
Diesel (C10-C28)	826	50.0	mg/kg	1000	ND	82.6	70-130	2.46	35	
Residual Range Organics (C28-C40)	910	200	"	1000	ND	91.0	70-130	6.63	35	
Surrogate: o-Terphenyl	42		"	49.8		83.6	50-150			

Origins Laboratory, Inc.



The results in this report apply to the samples analyzed in accordance with the chain of custody document. This analytical report must be reproduced in its entirety.



Eagle Environmental Consulting, LLC  
8000 W 44th Ave  
Wheat Ridge CO 80033

Martin C Eckert III  
Project Number: [none]  
Project: Noble - Stephenson #6-31

## Extractable Petroleum Hydrocarbons by 8015D - Quality Control

### Origins Laboratory, Inc.

Analyte	Result	Reporting Limit	Units	Spike Level	Source Result	%REC	%REC Limits	RPD	RPD Limit	Notes
---------	--------	-----------------	-------	-------------	---------------	------	-------------	-----	-----------	-------

## Metals by EPA 6000/7000 Series Methods - Quality Control

### Origins Laboratory, Inc.

Analyte	Result	Reporting Limit	Units	Spike Level	Source Result	%REC	%REC Limits	RPD	RPD Limit	Notes
---------	--------	-----------------	-------	-------------	---------------	------	-------------	-----	-----------	-------

#### Batch B3C2018 - EPA 3050B

#### Blank (B3C2018-BLK1)

Prepared: 03/20/2023 Analyzed: 03/21/2023

Arsenic	ND	0.000100	mg/kg
Barium	ND	0.0100	"
Cadmium	ND	0.000100	"
Copper	ND	0.0100	"
Lead	ND	0.0100	"
Nickel	ND	0.0100	"
Selenium	ND	0.000100	"
Silver	ND	0.000100	"
Zinc	ND	0.100	"

#### LCS (B3C2018-BS1)

Prepared: 03/20/2023 Analyzed: 03/21/2023

Arsenic	0.0481	0.000100	mg/kg	0.0500	96.3	80-120
Barium	5.06	0.0100	"	5.00	101	80-120
Cadmium	0.0500	0.000100	"	0.0500	100	80-120
Copper	0.505	0.0100	"	0.500	101	80-120
Lead	0.0502	0.0100	"	0.0500	100	80-120
Nickel	0.0482	0.0100	"	0.0500	96.5	80-120
Selenium	0.0467	0.000100	"	0.0500	93.5	80-120
Silver	0.0489	0.000100	"	0.0500	97.8	80-120
Zinc	0.467	0.100	"	0.500	93.4	80-120

#### Matrix Spike (B3C2018-MS1)

Source: Y303418-04

Prepared: 03/20/2023 Analyzed: 03/21/2023

Origins Laboratory, Inc.



The results in this report apply to the samples analyzed in accordance with the chain of custody document. This analytical report must be reproduced in its entirety.

Eagle Environmental Consulting, LLC  
8000 W 44th Ave  
Wheat Ridge CO 80033

Martin C Eckert III  
Project Number: [none]  
Project: Noble - Stephenson #6-31

## Metals by EPA 6000/7000 Series Methods - Quality Control

### Origins Laboratory, Inc.

Analyte	Result	Reporting Limit	Units	Spike Level	Source Result	%REC	%REC Limits	RPD	RPD Limit	Notes
---------	--------	-----------------	-------	-------------	---------------	------	-------------	-----	-----------	-------

#### Batch B3C2018 - EPA 3050B

Matrix Spike (B3C2018-MS1)		Source: Y303418-04			Prepared: 03/20/2023 Analyzed: 03/21/2023					
Arsenic	5.72	0.0902	mg/kg	4.51	1.47	94.4	75-125			
Barium	501	9.02	"	451	49.5	100	75-125			
Cadmium	4.64	0.0902	"	4.51	0.0909	101	75-125			
Copper	46.8	9.02	"	45.1	3.89	95.1	75-125			
Lead	9.95	9.02	"	4.51	5.46	99.5	75-125			
Nickel	7.89	9.02	"	4.51	3.71	92.6	75-125			
Selenium	4.23	0.0902	"	4.51	0.0525	92.6	75-125			
Silver	4.29	0.0902	"	4.51	0.0347	94.5	75-125			
Zinc	61.9	90.2	"	45.1	19.3	94.5	75-125			
Matrix Spike Dup (B3C2018-MSD1)		Source: Y303418-04			Prepared: 03/20/2023 Analyzed: 03/21/2023					
Arsenic	6.17	0.0940	mg/kg	4.70	1.47	100	75-125	7.45	20	
Barium	546	9.40	"	470	49.5	106	75-125	8.51	20	
Cadmium	4.88	0.0940	"	4.70	0.0909	102	75-125	4.99	20	
Copper	50.0	9.40	"	47.0	3.89	98.1	75-125	6.65	20	
Lead	11.1	9.40	"	4.70	5.46	120	75-125	11.0	20	
Nickel	9.02	9.40	"	4.70	3.71	113	75-125	13.4	20	
Selenium	4.32	0.0940	"	4.70	0.0525	90.9	75-125	2.23	20	
Silver	4.51	0.0940	"	4.70	0.0347	95.2	75-125	4.85	20	
Zinc	66.6	94.0	"	47.0	19.3	101	75-125	7.24	20	

Origins Laboratory, Inc.



The results in this report apply to the samples analyzed in accordance with the chain of custody document. This analytical report must be reproduced in its entirety.

Eagle Environmental Consulting, LLC  
8000 W 44th Ave  
Wheat Ridge CO 80033

Martin C Eckert III  
Project Number: [none]  
Project: Noble - Stephenson #6-31

## Classical Chemistry Parameters - Quality Control Origins Laboratory, Inc.

Analyte	Result	Reporting Limit	Units	Spike Level	Source Result	%REC	%REC Limits	RPD	RPD Limit	Notes
<b>Batch B3C1005 - DTPA Sorbitol Preparation</b>										
<b>Blank (B3C1005-BLK1)</b>					Prepared: 03/10/2023 Analyzed: 03/14/2023					
Boron	ND	0.100	mg/L							
<b>Duplicate (B3C1005-DUP1)</b>					<b>Source: Y303206-01</b>		Prepared: 03/10/2023 Analyzed: 03/14/2023			
Boron	ND	0.100	mg/L		0.00880				50	
<b>Batch B3C1306 - Saturated Paste Metals</b>										
<b>Blank (B3C1306-BLK1)</b>					Prepared: 03/13/2023 Analyzed: 03/14/2023					
Calcium PPM	ND	10.0	mg/L							
SAR	0.00		SAR							
Magnesium PPM	ND	10.0	mg/L							
Sodium PPM	ND	10.0	"							
<b>Duplicate (B3C1306-DUP1)</b>					<b>Source: Y303227-01</b>		Prepared: 03/13/2023 Analyzed: 03/14/2023			
SAR	0.00		SAR		28.8			200	200	
Calcium PPM	3.46	10.0	mg/L		4.04			15.2	50	
Magnesium PPM	0.644	10.0	"		0.647			0.465	50	
Sodium PPM	193	10.0	"		237			20.3	50	

Origins Laboratory, Inc.



The results in this report apply to the samples analyzed in accordance with the chain of custody document. This analytical report must be reproduced in its entirety.



Eagle Environmental Consulting, LLC  
8000 W 44th Ave  
Wheat Ridge CO 80033

Martin C Eckert III  
Project Number: [none]  
Project: Noble - Stephenson #6-31

## Saturated Paste - Quality Control Origins Laboratory, Inc.

Analyte	Result	Reporting Limit	Units	Spike Level	Source Result	%REC	%REC Limits	RPD	RPD Limit	Notes
<b>Batch B3C1315 - Saturated Paste pH/EC</b>										
<b>Blank (B3C1315-BLK1)</b>					Prepared: 03/13/2023 Analyzed: 03/14/2023					
Specific Conductance (EC)	ND	0.00500	mmhos/cm							
<b>Duplicate (B3C1315-DUP1)</b>					Source: Y303227-01 Prepared: 03/13/2023 Analyzed: 03/14/2023					
pH	7.78		pH Units		7.47			4.07	25	
Specific Conductance (EC)	0.819	0.00500	mmhos/cm		0.842			2.78	25	

Origins Laboratory, Inc.



The results in this report apply to the samples analyzed in accordance with the chain of custody document. This analytical report must be reproduced in its entirety.

Eagle Environmental Consulting, LLC  
8000 W 44th Ave  
Wheat Ridge CO 80033

Martin C Eckert III  
Project Number: [none]  
Project: Noble - Stephenson #6-31

## Total Metals by 7196A - Quality Control Waypoint Analytical, LLC.

Analyte	Result	Reporting Limit	Units	Spike Level	Source Result	%REC	%REC Limits	RPD	RPD Limit	Notes
<b>Batch L672502 -</b>										
<b>DUP (L 83912-DUP)</b>		<b>Source: Y303237-01</b>			Prepared: Analyzed: 03/28/2023					
Chromium, Hexavalent	ND	2.54	mg/Kg		<2.54	-		0	20	
<b>MS (L 83912-MS)</b>		<b>Source: Y303237-01</b>			Prepared: Analyzed: 03/28/2023					
Chromium, Hexavalent	30.9	2.5	mg/Kg	40.1	<1.22	77	75-125			
<b>LCS (LCS)</b>					Prepared: Analyzed: 03/28/2023					
Chromium, Hexavalent	6.92	0.5	mg/Kg	8		87	75-125			
<b>LRB (LRB)</b>					Prepared: Analyzed: 03/28/2023					
Chromium, Hexavalent	ND	0.5	mg/Kg				-			

Origins Laboratory, Inc.



The results in this report apply to the samples analyzed in accordance with the chain of custody document. This analytical report must be reproduced in its entirety.

Eagle Environmental Consulting, LLC  
8000 W 44th Ave  
Wheat Ridge CO 80033

Martin C Eckert III  
Project Number: [none]  
Project: Noble - Stephenson #6-31

**PAH by 8270D SIM - Quality Control**  
**Waypoint Analytical, LLC.**

Analyte	Result	Reporting Limit	Units	Spike Level	Source Result	%REC	%REC Limits	RPD	RPD Limit	Notes
---------	--------	-----------------	-------	-------------	---------------	------	-------------	-----	-----------	-------

**Batch L669818 - 3550B**

MSD (L 98432-MSD-L669818)		Source: 98432			Prepared: 03/15/2023 Analyzed: 03/15/2023					
Pyrene	0.0993	0.00067	mg/Kg	0.164	<0.000643	60.5	30-130	6.6	30	
Fluoranthene	0.104	0.00067	"	0.164	<0.000394	63.4	30-130	5.6	30	
Acenaphthene	0.109	0.00067	"	0.164	0.000433	66.1	30-130	7.6	30	
1-Methylnaphthalene	0.106	0.00201	"	0.164	<0.00109	64.6	30-130	5.8	30	
Indeno(1,2,3-cd)pyrene	0.113	0.00067	"	0.164	<0.000627	68.9	30-130	4.5	30	
Naphthalene	0.1	0.00201	"	0.164	<0.00145	60.9	30-130	7.2	30	
Anthracene	0.118	0.00067	"	0.164	<0.000334	71.9	30-130	13.5	30	
Benzo(a)anthracene	0.113	0.00067	"	0.164	0.000759	68.4	30-130	8.2	30	
Benzo(b)fluoranthene	0.0814	0.00067	"	0.164	<0.000585	49.6	30-130	1.2	30	
Benzo(k)fluoranthene	0.0947	0.00067	"	0.164	<0.000437	57.7	30-130	1.3	30	
Chrysene	0.111	0.00067	"	0.164	0.00137	66.8	30-130	2.7	30	
Dibenz(a,h)anthracene	0.157	0.00067	"	0.164	<0.000614	95.7	30-130	7.9	30	
Fluorene	0.112	0.00067	"	0.164	0.00133	67.4	30-130	9.3	30	
Benzo(a)pyrene	0.115	0.00067	"	0.164	<0.000468	70.1	30-130	3.5	30	
2-Methylnaphthalene	0.106	0.00201	"	0.164	<0.00194	64.6	30-130	6.5	30	
Surrogate: Nitrobenzene-d5	57.1		"	0.329	175	57.1	29-110			
Surrogate: 2-Fluorobiphenyl	58.3		"	0.329	179	58.3	33-115			
Surrogate: 4-Terphenyl-d14	52.2		"	0.329	170	52.2	33-122			

MS (L 98432-MS-L669818)		Source: 98432			Prepared: 03/15/2023 Analyzed: 03/15/2023					
Dibenz(a,h)anthracene	0.145	0.00067	mg/Kg	0.164	<0.000614	88.4	30-130			
Fluoranthene	0.0983	0.00067	"	0.164	<0.000394	59.9	30-130			
Pyrene	0.0929	0.00067	"	0.164	<0.000643	56.6	30-130			
Fluorene	0.102	0.00067	"	0.164	0.00133	61.3	30-130			
Chrysene	0.108	0.00067	"	0.164	0.00137	65	30-130			
Naphthalene	0.093	0.00201	"	0.164	<0.00145	56.7	30-130			
Indeno(1,2,3-cd)pyrene	0.108	0.00067	"	0.164	<0.000627	65.8	30-130			

Origins Laboratory, Inc.



The results in this report apply to the samples analyzed in accordance with the chain of custody document. This analytical report must be reproduced in its entirety.



Eagle Environmental Consulting, LLC  
8000 W 44th Ave  
Wheat Ridge CO 80033

Martin C Eckert III  
Project Number: [none]  
Project: Noble - Stephenson #6-31

**PAH by 8270D SIM - Quality Control**  
**Waypoint Analytical, LLC.**

Analyte	Result	Reporting Limit	Units	Spike Level	Source Result	%REC	%REC Limits	RPD	RPD Limit	Notes
---------	--------	-----------------	-------	-------------	---------------	------	-------------	-----	-----------	-------

**Batch L669818 - 3550B**

MS (L 98432-MS-L669818)		Source: 98432			Prepared: 03/15/2023 Analyzed: 03/15/2023					
1-Methylnaphthalene	0.1	0.00201	mg/Kg	0.164	<0.00109	60.9	30-130			
Benzo(b)fluoranthene	0.0804	0.00067	"	0.164	<0.000585	49	30-130			
Benzo(a)pyrene	0.111	0.00067	"	0.164	<0.000468	67.6	30-130			
Benzo(a)anthracene	0.104	0.00067	"	0.164	0.000759	62.9	30-130			
Acenaphthene	0.101	0.00067	"	0.164	0.000433	61.3	30-130			
2-Methylnaphthalene	0.0993	0.00201	"	0.164	<0.00194	60.5	30-130			
Benzo(k)fluoranthene	0.096	0.00067	"	0.164	<0.000437	58.5	30-130			
Anthracene	0.103	0.00067	"	0.164	<0.000334	62.8	30-130			
Surrogate: Nitrobenzene-d5	53		"	0.328	175	53	29-110			
Surrogate: 4-Terphenyl-d14	48.4		"	0.328	170	48.4	33-122			
Surrogate: 2-Fluorobiphenyl	55.1		"	0.328	179	55.1	33-115			

LCS (LCS-L669818)		Prepared: 03/15/2023 Analyzed: 03/15/2023								
Chrysene	0.121	0.00067	mg/Kg	0.167		72.4	30-130			
Dibenz(a,h)anthracene	0.156	0.00067	"	0.167		93.4	30-130			
Fluorene	0.127	0.00067	"	0.167		76	30-130			
Naphthalene	0.108	0.00201	"	0.167		64.6	30-130			
Benzo(k)fluoranthene	0.121	0.00067	"	0.167		72.4	30-130			
Pyrene	0.111	0.00067	"	0.167		66.4	30-130			
Fluoranthene	0.114	0.00067	"	0.167		68.2	30-130			
1-Methylnaphthalene	0.112	0.00201	"	0.167		67	30-130			
Benzo(a)pyrene	0.132	0.00067	"	0.167		79	30-130			
Benzo(a)anthracene	0.12	0.00067	"	0.167		71.8	30-130			
Anthracene	0.135	0.00067	"	0.167		80.8	30-130			
Acenaphthene	0.115	0.00067	"	0.167		68.8	30-130			
2-Methylnaphthalene	0.112	0.00201	"	0.167		67	30-130			
Indeno(1,2,3-cd)pyrene	0.103	0.00067	"	0.167		61.6	30-130			

Origins Laboratory, Inc.



The results in this report apply to the samples analyzed in accordance with the chain of custody document. This analytical report must be reproduced in its entirety.

Eagle Environmental Consulting, LLC  
8000 W 44th Ave  
Wheat Ridge CO 80033

Martin C Eckert III  
Project Number: [none]  
Project: Noble - Stephenson #6-31

**PAH by 8270D SIM - Quality Control**  
**Waypoint Analytical, LLC.**

Analyte	Result	Reporting Limit	Units	Spike Level	Source Result	%REC	%REC Limits	RPD	RPD Limit	Notes
<b>Batch L669818 - 3550B</b>										
<b>LCS (LCS-L669818)</b>					Prepared: 03/15/2023 Analyzed: 03/15/2023					
Benzo(b)fluoranthene	0.078	0.00067	mg/Kg	0.167		46.7	30-130			
Surrogate: Nitrobenzene-d5	64.8		"	0.333		64.8	29-110			
Surrogate: 4-Terphenyl-d14	67.8		"	0.333		67.8	33-122			
Surrogate: 2-Fluorobiphenyl	67.2		"	0.333		67.2	33-115			
<b>LRB (LRB-L669818)</b>					Prepared: 03/15/2023 Analyzed: 03/15/2023					
Chrysene	ND	0.00067	mg/Kg				-			
Dibenz(a,h)anthracene	ND	0.00067	"				-			
Fluoranthene	ND	0.00067	"				-			
Fluorene	ND	0.00067	"				-			
Indeno(1,2,3-cd)pyrene	ND	0.00067	"				-			
Benzo(k)fluoranthene	ND	0.00067	"				-			
Naphthalene	ND	0.00201	"				-			
Benzo(b)fluoranthene	ND	0.00067	"				-			
Benzo(a)pyrene	ND	0.00067	"				-			
Benzo(a)anthracene	ND	0.00067	"				-			
Acenaphthene	ND	0.00067	"				-			
2-Methylnaphthalene	ND	0.00201	"				-			
1-Methylnaphthalene	ND	0.00201	"				-			
Pyrene	ND	0.00067	"				-			
Anthracene	ND	0.00067	"				-			
Surrogate: Nitrobenzene-d5	62.4		"	0.333		62.4	29-110			
Surrogate: 4-Terphenyl-d14	64.8		"	0.333		64.8	33-122			
Surrogate: 2-Fluorobiphenyl	60.9		"	0.333		60.9	33-115			

Origins Laboratory, Inc.



The results in this report apply to the samples analyzed in accordance with the chain of custody document. This analytical report must be reproduced in its entirety.

Eagle Environmental Consulting, LLC  
8000 W 44th Ave  
Wheat Ridge CO 80033

Martin C Eckert III  
Project Number: [none]  
Project: Noble - Stephenson #6-31

### Notes and Definitions

- U Sample is Non-Detect.
- S-GC Surrogate recovery outside of control limits. The data was accepted based on valid recovery of the remaining surrogate.
- QM-4X The spike recovery was outside of QC acceptance limits for the MS and/or MSD due to analyte concentration at 4 times or greater the spike concentration. The QC batch was accepted based on LCS and/or LCSD recoveries within the acceptance limits.
- QM-07 The spike recovery was outside acceptance limits for the MS and/or MSD. The batch was accepted based on acceptable LCS recovery.
- J Estimated Value. Analyte below reported quantitation limit.
- ND Analyte NOT DETECTED at or above the reporting limit
- RPD Relative Percent Difference

All soil results are reported on a wet weight basis.

Calculated results may use J-flag data (instead of reported "ND") as part of calculation to provide a more accurate result.

Origins Laboratory, Inc.



*The results in this report apply to the samples analyzed in accordance with the chain of custody document. This analytical report must be reproduced in its entirety.*

Jordan A. Bynon, Project Manager





April 05, 2023

Eagle Environmental Consulting, LLC

Martin C Eckert III

8000 W 44th Ave

Wheat Ridge CO 80033

Project Name - Noble - Stephenson #6-31

Project Number - [none]

Attached are your analytical results for Noble - Stephenson #6-31 received by Origins Laboratory, Inc. March 24, 2023. This project is associated with Origins project number Y303654-01.

The analytical results in the following report were analyzed under the guidelines of EPA Methods. These methods are identified as follows; "SW" are defined in SW-846, "EPA" are defined in 40CFR part 136 and "SM" are defined in the most current revision of Standard Methods For the Examination of Water and Wastewater.

The analytical results apply specifically to the samples and analyses specified per the attached Chain of Custody. As such, this report shall not be reproduced except in full, without the written approval of Origin's laboratory.

Unless otherwise noted, the analytical results for all soil samples are reported on a wet weight basis. All analytical analyses were performed under NELAP guidelines unless noted by a data qualifier.

Any holding time exceedances, deviations from the method specifications or deviations from Origins Laboratory's Standard Operating Procedures are outlined in the case narrative.

Thank you for selecting Origins for your analytical needs. Please contact us with any questions concerning this report, or if we can help with anything at all.

Origins Laboratory, Inc.  
303.433.1322  
o-squad@oelabinc.com



1725 Elk Place, Denver, CO 80211 | Phone: 303.433.1322 | Fax: 303.265.9645

Eagle Environmental Consulting, LLC

8000 W 44th Ave

Wheat Ridge CO 80033

Martin C Eckert III

Project Number: [none]

Project: Noble - Stephenson #6-31

### CROSS REFERENCE REPORT

Sample ID	Laboratory ID	Matrix	Date Sampled	Date Received
Background-01@3'	Y303654-01	Soil	March 9, 2023 11:05	03/24/2023 08:50

Origins Laboratory, Inc.



*The results in this report apply to the samples analyzed in accordance with the chain of custody document. This analytical report must be reproduced in its entirety.*

Martin C Eckert III  
Project Number: [none]  
Project: Noble - Stephenson #6-31

# ORIGINS

LABORATORY, INC

www.originslaboratory.com

4303054

page 1 of 1

Client: Eagle Env. Consulting

Address: 8000 W 44th Ave

Wheat Ridge, CO 80033

303-433-0479

Telephone Number:

Email Address: Mike.Boyd@Eagle-Env.co

Project Manager: Martin Eckert III

Project Name: Stephenson #G-31

Project Number:

Samples Collected By: EL

Sample ID Description	Date Sampled	Time Sampled	# of Containers	Preservative				Matrix			Analysis	Sample Instructions		
				Unpreserved	HCl	HNO <sub>3</sub>	Other	Groundwater	Soil	Air Summa Canister #			Other	
Background-01@3'	3/9/13	1105	1	X					X			Metals - 60.000	1	MDs needed
													2	
													3	
													4	
													5	
													6	
													7	
													8	
													9	
													10	

Relinquished By: [Signature]	Date: 3/24/13	Time: 0850	Received By: [Signature]	Date: 3/24/13	Time: 0850	Turnaround Time: Same Day <input type="checkbox"/> 24 Hr <input type="checkbox"/> 48 Hr <input type="checkbox"/> 72 Hr <input type="checkbox"/> Standard <input checked="" type="checkbox"/>
Relinquished By:	Date:	Time:	Received By:	Date:	Time:	

Bill to Cole

Temp Received. 4

Date Results Needed

4/10/13

Origins Laboratory, Inc.

Byron

*The results in this report apply to the samples analyzed in accordance with the chain of custody document. This analytical report must be reproduced in its entirety.*

Eagle Environmental Consulting, LLC  
8000 W 44th Ave  
Wheat Ridge CO 80033

Martin C Eckert III  
Project Number: [none]  
Project: Noble - Stephenson #6-31

Origins Laboratory

F-012207-01-R1  
Effective Date: 01/09/12

**Sample Receipt Checklist**

Origins Work Order: 1303054 Client: Eagle Environ-  
Client Project ID: Stephenson #6-31

Checklist Completed by: TSM Shipped Via: HD  
(UPS, FedEx, Hand Delivered, Pick-up, etc.)  
Date/time completed: 3/24/23 Airbill #: nil

Matrix(s) Received: (Check all that apply): ☒ Soil/Solid ☐ Water ☐ Other: \_\_\_\_\_

Cooler Number/Temperature: 114 °C 1 °C 1 °C (Describe) \_\_\_\_\_ °C

Thermometer ID: TDU4

Requirement Description	Yes	No	N/A	Comments (if any)
If samples require cooling, was the temperature between 0°C to ≤ 6°C <sup>(1)</sup> ?	/			
Is there ice present (document if blue ice is used)	/			
Are custody seals present on cooler? (if so, document in comments if they are signed and dated, broken or intact)			/	
Are custody seals present on each sample container? (if so, document in comments if they are signed and dated, broken or intact)			/	
Were all samples received intact <sup>(1)</sup> ?	/			
Was adequate sample volume provided <sup>(1)</sup> ?	/			
Are short holding time analytes or samples with HTs due within 48 hours present <sup>(1)</sup> ?		/		
Is a chain-of-custody (COC) present and filled out completely <sup>(1)</sup> ?	/			
Does the COC agree with the number and type of sample bottles received <sup>(1)</sup> ?	/			
Do the sample IDs on the bottle labels match the COC <sup>(1)</sup> ?	/			
Is the COC properly relinquished by the client with date and time recorded <sup>(1)</sup> ?	/			
For volatiles in water – is there headspace (> ¼ inch bubble) present? If yes, contact client and note in narrative.			/	
Are samples preserved that require preservation and was it checked <sup>(1)</sup> ? (note ID of confirmation instrument used in comments) / (preservation is not confirmed for subcontracted analyses in order to insure sample integrity) (pH < 2 for samples preserved with HNO <sub>3</sub> , HCL, H <sub>2</sub> SO <sub>4</sub> ) / (pH > 10 for samples preserved with NaAsO <sub>2</sub> +NaOH, ZnAc+NaOH)			/	
Additional Comments (if any):				

<sup>(1)</sup>If NO, then contact the client before proceeding with analysis and note date/time and person contacted as well as the corrective action to in the additional comments (above) and the case narrative.

Reviewed by (Project Manager) [Signature] Date/Time Reviewed 3/27/23

Origins Laboratory, Inc.

*J. Bynon*

The results in this report apply to the samples analyzed in accordance with the chain of custody document. This analytical report must be reproduced in its entirety.



Eagle Environmental Consulting, LLC  
8000 W 44th Ave  
Wheat Ridge CO 80033

Martin C Eckert III  
Project Number: [none]  
Project: Noble - Stephenson #6-31

**Background-01@3'**  
**3/9/2023 11:05:00AM**

Analyte	Result	Limit	Units	Dilution	Batch	Analyst	Prepared	Analyzed	Notes
---------	--------	-------	-------	----------	-------	---------	----------	----------	-------

**Origins Laboratory, Inc.**  
**Y303654-01 (Soil)**

**Table 915 metals by EPA 6020B**

Arsenic	4.38	0.0869	mg/kg	10	B3C2420	CNG	03/24/2023	03/28/2023
Barium	60.8	8.69	"	"	"	CNG	"	"
Cadmium	0.129	0.0869	"	"	"	CNG	"	"
Copper	ND	8.69	"	"	"	CNG	"	"
Lead	ND	8.69	"	"	"	CNG	"	"
Nickel	ND	8.69	"	"	"	CNG	"	"
Selenium	0.169	0.0869	"	"	"	CNG	"	"
Silver	ND	0.0869	"	"	"	CNG	"	"
Zinc	ND	86.9	"	"	"	CNG	"	"

Origins Laboratory, Inc.



*The results in this report apply to the samples analyzed in accordance with the chain of custody document. This analytical report must be reproduced in its entirety.*

Eagle Environmental Consulting, LLC  
8000 W 44th Ave  
Wheat Ridge CO 80033

Martin C Eckert III  
Project Number: [none]  
Project: Noble - Stephenson #6-31

**Metals by EPA 6000/7000 Series Methods - Quality Control**  
**Origins Laboratory, Inc.**

Analyte	Result	Reporting Limit	Units	Spike Level	Source Result	%REC	%REC Limits	RPD	RPD Limit	Notes
---------	--------	-----------------	-------	-------------	---------------	------	-------------	-----	-----------	-------

**Batch B3C2420 - EPA 3050B**

**Blank (B3C2420-BLK1)**

Prepared: 03/24/2023 Analyzed: 03/28/2023

Arsenic	ND	0.000100	mg/kg
Barium	ND	0.0100	"
Cadmium	ND	0.000100	"
Copper	ND	0.0100	"
Lead	ND	0.0100	"
Nickel	ND	0.0100	"
Selenium	ND	0.000100	"
Silver	ND	0.000100	"
Zinc	ND	0.100	"

**LCS (B3C2420-BS1)**

Prepared: 03/24/2023 Analyzed: 03/28/2023

Arsenic	0.0460	0.000100	mg/kg	0.0500	92.1	80-120
Barium	4.92	0.0100	"	5.00	98.4	80-120
Cadmium	0.0505	0.000100	"	0.0500	101	80-120
Copper	0.476	0.0100	"	0.500	95.2	80-120
Lead	0.0524	0.0100	"	0.0500	105	80-120
Nickel	0.0503	0.0100	"	0.0500	101	80-120
Selenium	0.0495	0.000100	"	0.0500	98.9	80-120
Silver	0.0522	0.000100	"	0.0500	104	80-120
Zinc	0.465	0.100	"	0.500	93.0	80-120

**Matrix Spike (B3C2420-MS1)**

**Source: Y303566-01**

Prepared: 03/24/2023 Analyzed: 03/28/2023

Arsenic	10.1	0.0912	mg/kg	4.56	3.11	153	75-125	QM-07
Barium	549	9.12	"	456	73.8	104	75-125	
Cadmium	4.71	0.0912	"	4.56	0.0681	102	75-125	
Copper	47.6	9.12	"	45.6	4.66	94.2	75-125	
Lead	15.5	9.12	"	4.56	5.96	208	75-125	QM-07

Origins Laboratory, Inc.



*The results in this report apply to the samples analyzed in accordance with the chain of custody document. This analytical report must be reproduced in its entirety.*

Eagle Environmental Consulting, LLC  
8000 W 44th Ave  
Wheat Ridge CO 80033

Martin C Eckert III  
Project Number: [none]  
Project: Noble - Stephenson #6-31

## Metals by EPA 6000/7000 Series Methods - Quality Control Origins Laboratory, Inc.

Analyte	Result	Reporting Limit	Units	Spike Level	Source Result	%REC	%REC Limits	RPD	RPD Limit	Notes
<b>Batch B3C2420 - EPA 3050B</b>										
<b>Matrix Spike (B3C2420-MS1)</b>		<b>Source: Y303566-01</b>			Prepared: 03/24/2023 Analyzed: 03/28/2023					
Nickel	11.4	9.12	mg/kg	4.56	6.35	112	75-125			
Selenium	4.46	0.0912	"	4.56	0.0989	95.7	75-125			
Silver	4.49	0.0912	"	4.56	0.0218	97.9	75-125			
Zinc	74.7	91.2	"	45.6	26.9	105	75-125			
<b>Matrix Spike Dup (B3C2420-MSD1)</b>		<b>Source: Y303566-01</b>			Prepared: 03/24/2023 Analyzed: 03/28/2023					
Arsenic	6.60	0.0851	mg/kg	4.25	3.11	82.0	75-125	41.9	20	QR-DUP
Barium	486	8.51	"	425	73.8	96.9	75-125	12.1	20	
Cadmium	4.24	0.0851	"	4.25	0.0681	98.1	75-125	10.5	20	
Copper	42.1	8.51	"	42.5	4.66	88.0	75-125	12.2	20	
Lead	9.66	8.51	"	4.25	5.96	87.0	75-125	46.2	20	QR-DUP
Nickel	9.12	8.51	"	4.25	6.35	65.2	75-125	22.6	20	QM-07, QR-DUP
Selenium	4.29	0.0851	"	4.25	0.0989	98.5	75-125	3.89	20	
Silver	4.14	0.0851	"	4.25	0.0218	96.8	75-125	7.99	20	
Zinc	64.4	85.1	"	42.5	26.9	88.2	75-125	14.9	20	

Origins Laboratory, Inc.



The results in this report apply to the samples analyzed in accordance with the chain of custody document. This analytical report must be reproduced in its entirety.

Eagle Environmental Consulting, LLC  
8000 W 44th Ave  
Wheat Ridge CO 80033

Martin C Eckert III  
Project Number: [none]  
Project: Noble - Stephenson #6-31

### Notes and Definitions

QR-DUP RPD exceeds QC acceptance criteria, this indicates source sample is not homogenous.

QM-07 The spike recovery was outside acceptance limits for the MS and/or MSD. The batch was accepted based on acceptable LCS recovery.

ND Analyte NOT DETECTED at or above the reporting limit

RPD Relative Percent Difference

All soil results are reported at a wet weight basis.

Origins Laboratory, Inc.



*The results in this report apply to the samples analyzed in accordance with the chain of custody document. This analytical report must be reproduced in its entirety.*