



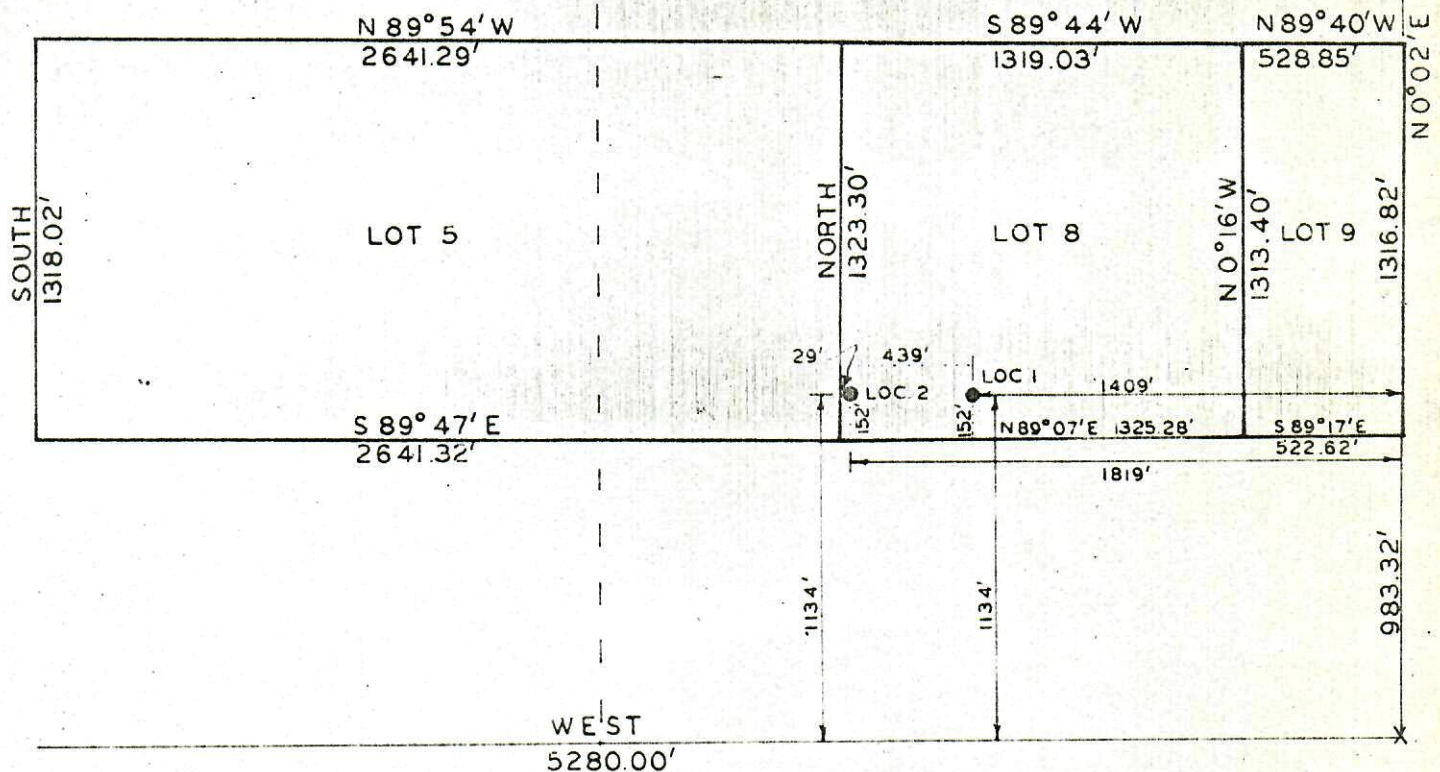
00046608

APR 13 1965

OIL & GAS
CONSERVATION COMMISSION

Rec'd 4/13/65

T1N, R102W, 6TH P.M.

NE COR
SEC. 4

X = Corners Identified (stone)

Scale: 1" = 600'

By ROSS CONSTRUCTION CO
Vernal, Utah*A.S. Ross*PARTY
G. Stewart
L. Taylor

WEATHER Fair-Warm

SURVEY
DELANEY PETROLEUM CORP.
WELL LOC. NO. 1 & NO. 2, LOCATED AS SHOWN IN
THE SOUTH 1/2 LOT 8 SEC. 4, T1N, R102W, 6TH PM.
R. 3, A. 1, CO. 1, CO. 1, CO. 1DATE 11/7/62
REFERENCES
GLO Township Plat
Approved 2/8/1907
FILE DELANEY