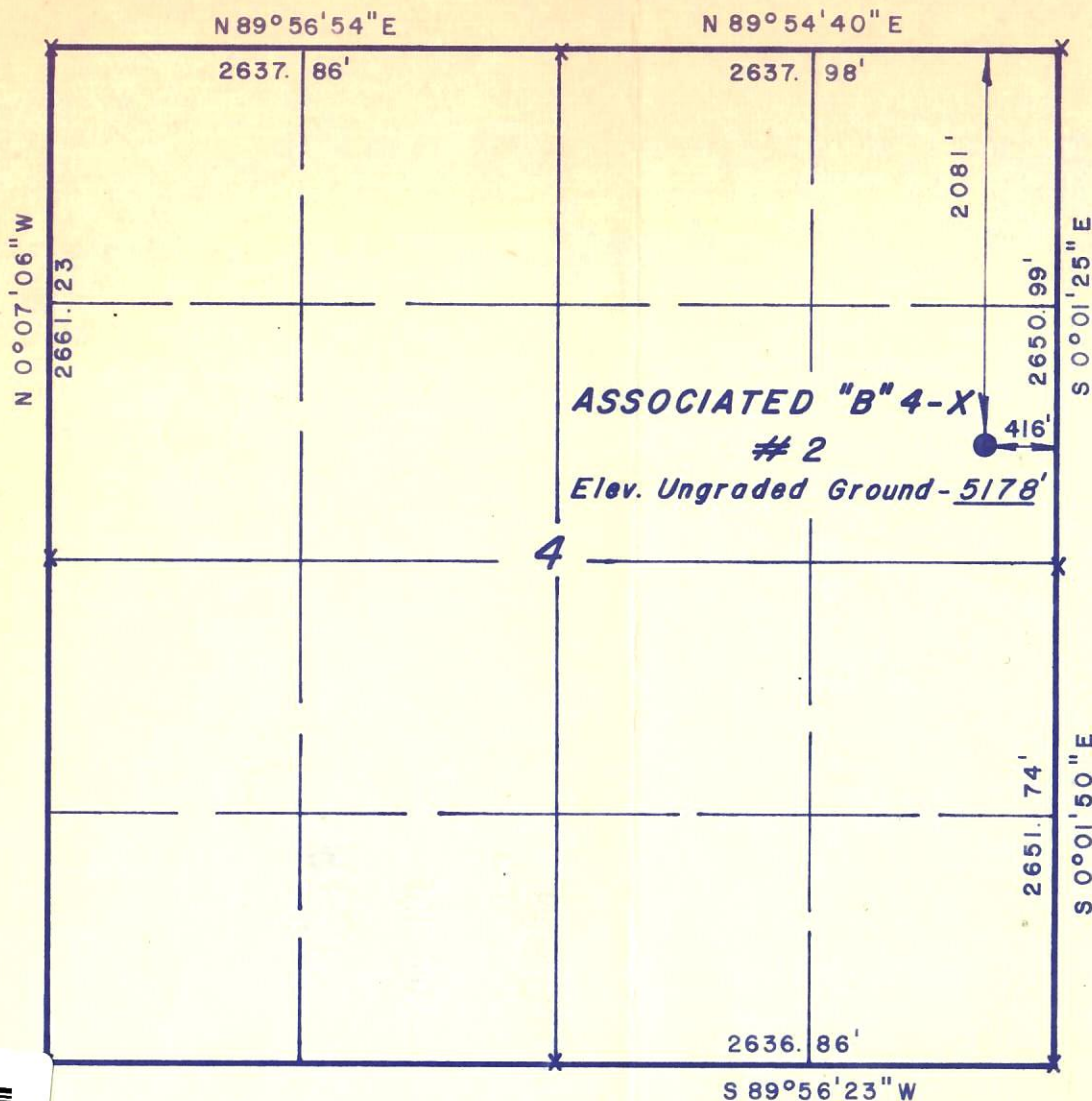


T1N, R102W, 6th P.M.



PROJECT
CHEVRON U.S.A. INC.

Well location, ASSOCIATED "B"
4-X # 2, located as shown in the
SE 1/4 NE 1/4, Section 4, T1N,
R102W, 6th P.M. Rio Blanco
County, Colorado.

NOTE:

Elev. Ref. Pt. N 42°34'05"E - 250' = 5179.12'
" - 200' = 5178.40'
N 47°25'55"W - 250' = 5177.70'
" - 200' = 5178.06'

BEST COPY
AVAILABLE



RECEIVED

JUL 31 1981

COLO. OIL & GAS CONS. COMM.

CERTIFICATE

THIS IS TO CERTIFY THAT THE ABOVE PLAT WAS PREPARED FROM
FIELD NOTES OF ACTUAL SURVEYS MADE BY ME OR UNDER MY
SUPERVISION AND THAT THE SAME ARE TRUE AND CORRECT TO THE
BEST OF MY KNOWLEDGE AND BELIEF

REGISTERED LAND SURVEYOR
REGISTRATION NO. 5839
STATE OF Colorado

UINTAH ENGINEERING & LAND SURVEYING
P.O. BOX Q - 85 SOUTH - 200 EAST
VERNAL, UTAH - 84078

SCALE	1" = 1000'	DATE	7/15/81
PARTY	NM, HM, DH JH	REFERENCES	GLO PLAT
WEATHER	FAIR / HOT	FILE	CHEVRON

NOTE: LOCATION TO DRILL TO LOCATION
HALFWAY BETWEEN CONTROL LOCATIONS
(BOTTOM OF HOLE): S 8°06'43"W - 38.277'

X = Section Corners Located

