



Terra Energy Partners, LLC

SURFACE POST JOB REPORT

FED RG 312-18-297 05-103-12566
S:13 T:2S R:98W Rio Blanco CO

CallSheet #: 90561
Proposal #: 74572



SURFACE Post Job Report

Attention: Mr. Dustin Childers | (936) 524-8828 | dchilders@terraep.com
Terra Energy Partners, LLC
4828 Loop Central Dr., Suite 900 | Houston, TX 77081

Dear Mr. Dustin Childers,

Thank you for the opportunity to provide cementing services on this well. American Cementing strives to achieve complete customer satisfaction. If you have any questions regarding the services or data provided, please contact American Cementing at any time.

Sincerely,

Krystal Schell

Field Engineer I | (719) 992-1830 | krystal.schell@americacementing.com

Field Office 28730 US-6, Rifle, CO 81650
Phone: (970) 657-1187

Job Details & Summary

Geometry

Type	Function	OD (in)	ID (in)	Weight (lb/ft)	Thread	Top (ft)	Bottom (ft)	Excess (%)
Casing	Outer	20	19.5	53	n/a	0	114	0
Open Hole	Outer	n/a	17.5	n/a	n/a	80	1373	5
Casing	Inner	13.375	12.615	54.5	n/a	0	1383	0

Timing

Event	Date/Time
ERTS	03/06/2024 00:00
Call Out	3/6/2024 20:00
Depart Facility	3/6/2024 21:00
On Location	3/7/2024 00:00
Rig Up Iron	3/7/2024 01:00
Job Started	3/7/2024 04:18
Job Completed	3/7/2024 06:20
Rig Down Iron	3/7/2024 07:25
Depart Location	3/7/2024 07:30

Equipment / People

Unit Type	Unit	Power Unit	Employee #1
Field Storage Silo	FSS-470		
Cement Trailer Float	CTF-340	TRC-059	Candace Serrano
Light Duty Vehicles	LDV-128		Gerron McClure
Cement Pump Float	CPF-012	TRH-1137	Christopher Lough

General Job Information

Metrics	Value
Well Fluid Density	8.8 lb/gal
Well Fluid Type	WBM
Rig Circulation Vol	375 bbls
Rig Circulation Time	1 hours
Calculated Displacement	206 bbls
Actual Displacement	206 bbls
Total Spacer to Surface	20 bbls
Total CMT to Surface	42 bbls
Well Topped Out	No
Top Out Volume	N/A bbls

Job Details

Metrics	Value
Flare Prior to Job	No
Flare Prior to Job	N/A units
Flare During Job	No
Flare During Job	N/A units
Flare at End of Job	No
Flare at End of Job	N/A units
Well Full Prior to Job	Yes
Well Fluid Density Into Well	8.8 lb/gal
Well Fluid Density Out of Well	8.8 lb/gal

Job Details (cont.)

Metrics	Value
BHCT	84 °F
BHST	102 °F

Water Analysis

Metrics	Value	Recommended
Water Source	None	
Temperature	65 °F	50-80 °F
pH Level	6	5.5-8.5
Chlorides	200 mg/L	0-3000 mg/L
Total Alkalinity	100	0-1000
Total Hardness	10 mg/L	0-500 mg/L
Carbonates	10 mg/L	0-100 mg/L
Sulfates	100 mg/L	0-1500 mg/L
Potassium	200 mg/L	0-3000 mg/L
Iron	10 mg/L	0-300 mg/L

Circulation

Lost Circulation Experienced
No

Job Execution Information

Fluid	Product	Function	Density (lb/gal)	Yield (ft ³ /sk)	Water Rq. (gal/sk)	Water Rq. (gal/bbl)	Volume (sks)	Volume (bbl)	Designed Top (ft)
1	Water	Flush	8.34			42.00		20.00	0
2	Lead	Lead	12.30	2.31	13.16		460.00	189.17	0
3	Water	DisplacementFinal	8.34			42.00		207.30	0

Job Fluid Details

Fluid	Type	Fluid	Product	Function	Conc.	Uom
2	Lead	Lead	ASTM TYPE IL	Cement	100.00	%
2	Lead	Lead	A-10	Accelerator	5.00	%BWOB
2	Lead	Lead	A-2	Accelerator	3.00	lb/sk
2	Lead	Lead	A-7P	Accelerator	2.00	lb/sk
2	Lead	Lead	IntegraSeal POLI	LostCirculation	0.25	lb/sk
2	Lead	Lead	STATIC FREE	Other	0.01	lb/sk
2	Lead	Lead	XCem-308	Defoamer	0.30	%BWOB

Job Logs

Line	Event	Date (MM/DD/YY)	Time (HH:MM)	Density (lb/gal)	Pump Rate (bpm)	Pump Volume (bbls)	Pipe Pressure (psi)	Comment
1	ARRIVED ON LOCATION	3/7/2024	00:00					ARRIVED ON LOCATION 00:00
2	HAZARD ASESMENT	3/7/2024	00:05					
3	SPOT EQUIPMENT	3/7/2024	00:10					
4	PRE RIG UP SAFETY MEETING	3/7/2024	00:15					
5	RIGGED UP	3/7/2024	01:00					
6	PRE JOB SAFETY MEETING	3/7/2024	03:50					PRE JOB SAFETY MEETING
7	STAB CEMENT HEAD	3/7/2024	04:10					
8	START JOB	3/7/2024	04:18					START JOB
9	PRESSURE TEST LINES 3000	3/7/2024	04:20	8.34	1	1	3000	PRESSURE TEST LINES 3000PSI
10	20 BBL FRESH WATER SPACER	3/7/2024	04:22	8.34	6	20	320	START 20 BBL FRESH WATER SPACER
11	START PRIMARY SLURRY	3/7/2024	04:26	12.3	4	1	332	START 189.2 PRIMARY SLURRY @ 12.3 (2.31,13.16) 460 TOTAL SACKS
12	50 BBL PRIMARY SLURRY GONE	3/7/2024	04:34	12.3	6	50	385	
13	100 BBL PRIMARY SLURRY GONE	3/7/2024	04:43	12.3	6	100	383	
14	150 BBL PRIMARY SLURRY GONE	3/7/2024	04:53	12.3	6	150	375	
15	END OF PRIMARY	3/7/2024	05:03	12.3	4	189	289	END OF PRIMARY SLURRY
16	SHUTDOWN/ DROP TOP PLUG	3/7/2024	05:03					SHUTDOWN/ DROP TOP PLUG
17	START BBL FRESH WATER DISPLACEMENT	3/7/2024	05:08	8.34	4	1	290	START 207.3 BBL FRESH WATER DISPLACEMENT
18	50 BBL GONE ON DISPLACEMENT	3/7/2024	05:16	8.34	6	50	483	CAUGHT CEMENT @ 27 BBLS GONE ON DISPLACEMENT
19	100 BBL GONE ON DISPLACEMENT	3/7/2024	05:21	8.34	6	100	615	
20	150 BBL GONE ON DISPLACEMENT	3/7/2024	05:28	8.34	6	150	717	CEMENT TO SURFACE @ 165 BBLS GONE ON DISPLACEMENT/ CIRCULATED 102 SACKS OR 42 BBLS CEMENT TO SURFACE
21	SHUTDOWN/ 10 MINUTE HESITATION	3/7/2024	05:35	8.34	6	197	717/270	SHUTDOWN/ 10 MINUTE HESITATION
22	START DISPLACING 2 BPM LAST 10 BBLS	3/7/2024	05:44	8.34			383	START DISPLACEMENT 2BPM LAST 10 BBLS
23	FINAL LIFT PRESSURE TO LAND PLUG	3/7/2024	05:47	8.34			414	FINAL LIFT PRESSURE TO LAND PLUG - 414
24	LAND PLUG	3/7/2024	05:47	8.34			812	LAND PLUG - 812
25	PRESSURE TEST CASING 30 MINUTES/1100 PSI	3/7/2024	05:48	8.34	1	1	1138	START CASING TEST 1100 PSI/ 30 MINUTES
26	END CASING TEST/ CHECK FLOAT	3/7/2024	06:20	8.34			1144	END CASING TEST BEGINNING PRESSURE -1138/ ENDING PRESSURE -/ RETURNED 1 BBL UPON FLOAT CHECK
27	POST JOB/ PRE RIGDOWN SAFETY MEETING	3/7/2024	06:25					POST JOB SAFETY MEETING



Line	Event	Date (MM/DD/YY)	Time (HH:MM)	Density (lb/gal)	Pump Rate (bpm)	Pump Volume (bbls)	Pipe Pressure (psi)	Comment
28	RIGGED DOWN	3/7/2024	07:25					
29	PRE CONVOY SAFETY MEETING	3/7/2024	07:25					
30	LOCATION DEPARTURE	3/7/2024	08:00					
31	END OF JOB	3/7/2024	08:00					

Pump Diagrams

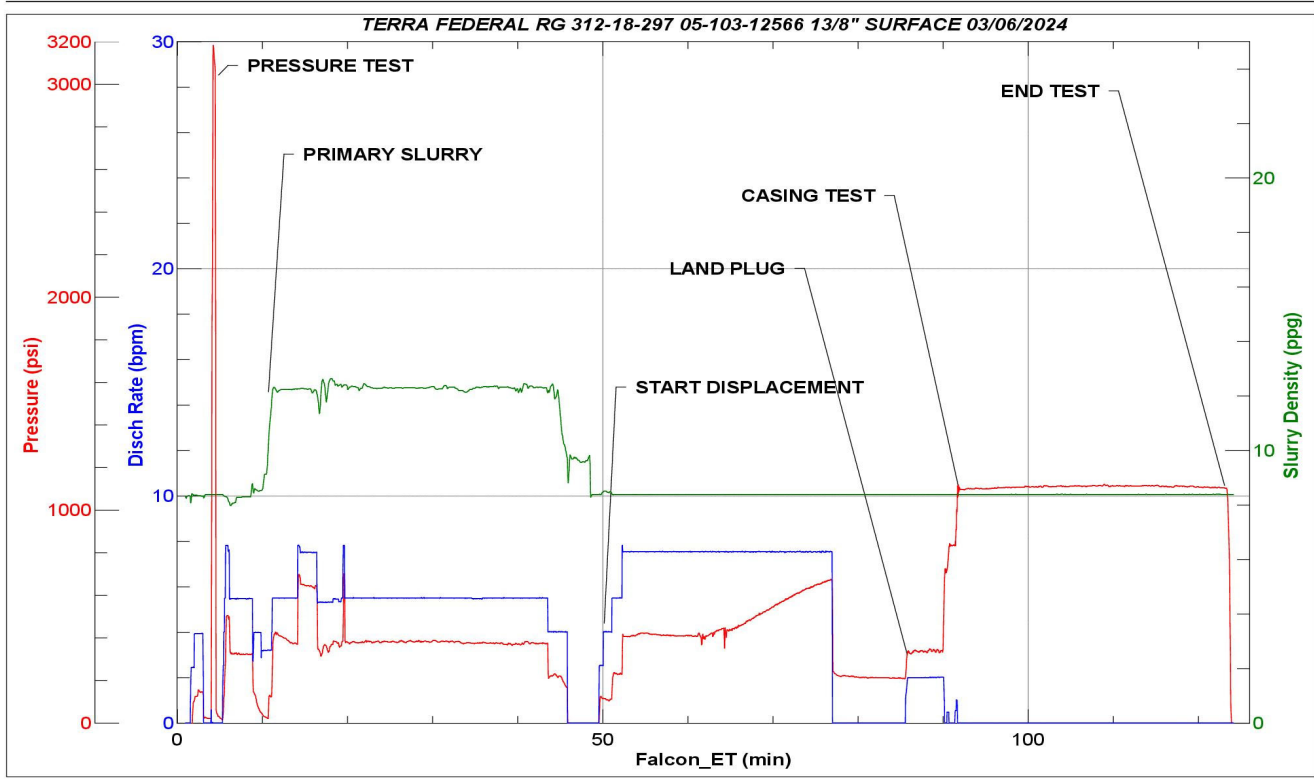


JobMaster Program Version 5.01C1

Job Number: 90561

Customer: TERRA

Well Name: FEDERAL 312-18-297



Job Start: Thursday, March 07, 2024