



---

# **Terra Energy Partners, LLC LONG STRING POST JOB REPORT**

**FED RG 312-18-297 05-103-12566  
S:13 T:2S R:98W Rio Blanco CO**

CallSheet #: 91297  
Proposal #: 76089



**LONG STRING Post Job Report**

**Attention:** Mr. Dustin Childers | (936) 524-8828 | dchilders@terraep.com  
Terra Energy Partners, LLC  
4828 Loop Central Dr., Suite 900 | Houston, TX 77081

---

Dear Mr. Dustin Childers,

Thank you for the opportunity to provide cementing services on this well. American Cementing strives to achieve complete customer satisfaction. If you have any questions regarding the services or data provided, please contact American Cementing at any time.

Sincerely,

**Addison Kneale**

Field Engineer I | (904) 228-9560 | addison.kneale@americacementing.com

**Field Office**      28730 US-6, Rifle, CO 81650  
Phone: (970) 657-1187

## Job Details & Summary

### Geometry

Type	Function	OD (in)	ID (in)	Weight (lb/ft)	Thread	Top (ft)	Bottom (ft)	Excess (%)
Casing	Outer	9.625	8.921	36	n/a	0	3198	0
Open Hole	Outer	n/a	8.75	n/a	n/a	3198	8618	45
Open Hole	Outer	n/a	8.75	n/a	n/a	8618	11318	45
Casing	Inner	4.5	4	11.6	n/a	0	11318	0

### Equipment / People

Unit Type	Unit	Power Unit	Employee #1
Field Storage Silo	FSS-438		
Field Storage Silo	FSS-470		
Cement Trailer Float	CTF-522	TRC-769	Michael Hutchinson
Cement Pump Float	CPF-136	TRH-855	Jacob Kirchenwitz
Light Duty Vehicles	LDV-128		Gerron McClure
Light Duty Vehicles	LDV-147		Eric Brown

### Timing

Event	Date/Time
ERTS	05/06/2024 11:00
Call Out	5/6/2024 02:30
Depart Facility	5/6/2024 08:00
On Location	5/6/2024 10:00
Rig Up Iron	5/6/2024 10:30
Job Started	5/6/2024 11:28
Job Completed	5/6/2024 13:52
Rig Down Iron	5/6/2024 14:30
Depart Location	5/6/2024 15:30

### General Job Information

Metrics	Value
Well Fluid Density	10 lb/gal
Well Fluid Type	WBM
Rig Circulation Vol	600 bbls
Rig Circulation Time	1 hours
Calculated Displacement	176 bbls
Actual Displacement	176 bbls
Total Spacer to Surface	0 bbls
Total CMT to Surface	0 bbls
Well Topped Out	No
Top Out Volume	N/A bbls

### Job Details

Metrics	Value
Well Full Prior to Job	Yes
Well Fluid Density Into Well	10 lb/gal
Well Fluid Density Out of Well	10 lb/gal

### Job Details (cont.)

Metrics	Value
BHCT	188 °F
BHST	250 °F

### Water Analysis

Metrics	Value	Recommended
Water Source	None	
Temperature	68 °F	50-80 °F
pH Level	6	5.5-8.5
Chlorides	200 mg/L	0-3000 mg/L
Total Alkalinity	100	0-1000
Total Hardness	50 mg/L	0-500 mg/L
Carbonates	10 mg/L	0-100 mg/L
Sulfates	100 mg/L	0-1500 mg/L
Potassium	200 mg/L	0-3000 mg/L
Iron	10 mg/L	0-300 mg/L

## Circulation

Lost Circulation Experienced

No

## Job Execution Information

Fluid	Product	Function	Density (lb/gal)	Yield (ft <sup>3</sup> /sk)	Water Rq. (gal/sk)	Water Rq. (gal/bbl)	Volume (sks)	Volume (bbl)	Designed Top (ft)
1	Water	Flush	8.34			42.00		10.00	6928
2	Lead	Lead	12.70	2.13	11.41		808.00	306.43	7054
3	Tail	Tail	13.50	2.01	9.72		601.00	215.06	8618
4	Displacement	DisplacementFinal	8.34			42.00		176.00	0

## Job Fluid Details

Fluid	Type	Fluid	Product	Function	Conc.	Uom
2	Lead	Lead	ASTM TYPE IL	Cement	100.00	%
2	Lead	Lead	A-2	Accelerator	0.10	%BWOB
2	Lead	Lead	FL-66	FluidLoss	0.20	%BWOB
2	Lead	Lead	GW-86	Viscosifier	0.10	%BWOB
2	Lead	Lead	IntegraSeal PHENO	LostCirculation	3.00	lb/sk
2	Lead	Lead	IntegraSeal POLI	LostCirculation	0.25	lb/sk
2	Lead	Lead	R-3	Retarder	0.75	%BWOB
2	Lead	Lead	STATIC FREE	Other	0.01	lb/sk
2	Lead	Lead	XCem-1009	Extender	10.00	lb/sk
2	Lead	Lead	XCem-308	Defoamer	0.30	%BWOB
3	Tail	Tail	CLASS G	Cement	70.00	%
3	Tail	Tail	FLY ASH (POZZOLAN)	Extender	30.00	%
3	Tail	Tail	BENTONITE	Viscosifier	8.00	%BWOB
3	Tail	Tail	FL-24	FluidLoss	0.40	%BWOB
3	Tail	Tail	IntegraSeal PHENO	LostCirculation	3.00	lb/sk
3	Tail	Tail	R-3	Retarder	0.30	%BWOB
3	Tail	Tail	S-8	StrengthRetrogression	26.00	%BWOB
3	Tail	Tail	XCem-308	Defoamer	0.30	%BWOB

## Job Logs

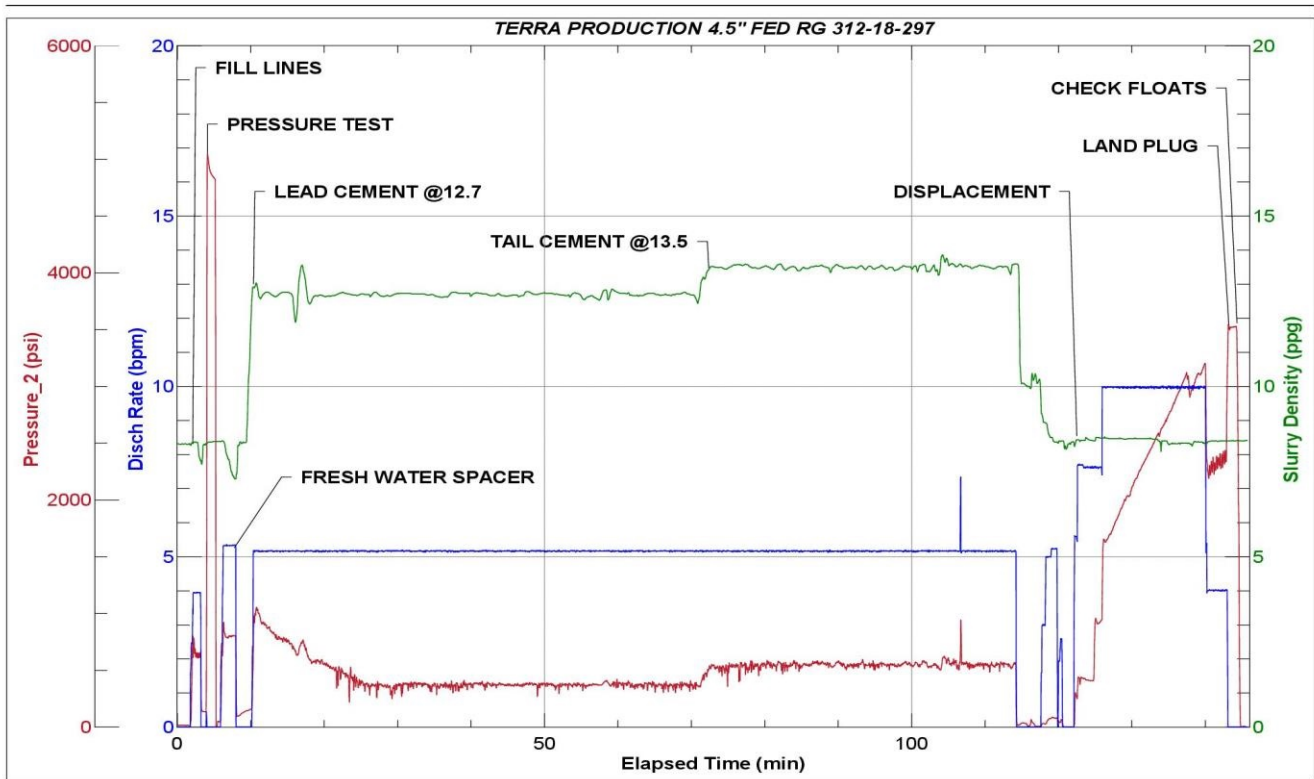
Line	Event	Date (MM/DD/YY)	Time (HH:MM)	Density (lb/gal)	Pump Rate (bpm)	Pump Volume (bbls)	Pipe Pressure (psi)	Comment
1	Callout	5/6/2024	02:30					CREW CALLED IN TO INSPECT AND PRETRIP EQUIPMENT
2	Safety Meeting	5/6/2024	07:30					PRE CONVOY SAFETY MEETING
3	Depart Location	5/6/2024	08:00					DEPART RCO YARD
4	Arrive On Location	5/6/2024	10:00					ARRIVE ON LOCATION PER CUSTOMER REQUEST
5	Rig Up Iron	5/6/2024	10:05					RIG UP IRON AND HOSES
6	Safety Meeting	5/6/2024	10:30					PRE JOB SAFETY MEETING WITH RIG CREW AND COMPANY MAN
7	Fill Lines	5/6/2024	11:00		4	5	762	FILL LINES WITH 5 BBLS OF FRESH WATER
8	Pressure Test Lines	5/6/2024	11:30	8.34	1	1	5586	PRESSURE TEST LINES TO 5586 PSI
9	Pump Spacer	5/6/2024	11:35	8.34	5	10	856	PUMP 10 BBLS OF FRESH WATER SPACER
10	Pump Lead Cement	5/6/2024	11:48	12.7	5	50	570	START MIXING AND PUMPING 306 BBLS OF LEAD CEMENT @12.7 PPG (2.13 YLD, 11.41 GPS) PUMP 50 BBLS OF LEAD CEMENT
11	Pump Lead Cement	5/6/2024	11:57	12.7	5	50	424	PUMP 100 BBLS OF LEAD CEMENT
12	Pump Lead Cement	5/6/2024	12:06	12.7	5	50	449	PUMP 150 BBLS OF LEAD CEMENT
13	Pump Lead Cement	5/6/2024	12:16	12.7	5	50	382	PUMP 200 BBLS OF LEAD CEMENT
14	Pump Lead Cement	5/6/2024	12:25	12.7	5	50	432	PUMP 250 BBLS OF LEAD CEMENT
15	Pump Lead Cement	5/6/2024	12:36	12.7	5	56	496	PUMP 306 BBLS OF LEAD CEMENT
16	Pump Tail Cement	5/6/2024	12:48	13.5	5	50	603	START MIXING AND PUMPING 215 BBLS OF TAIL CEMENT @13.5 PPG (2.01 YLD, 9.72 GPS) PUMP 50 BBLS OF TAIL CEMENT
17	Pump Tail Cement	5/6/2024	12:58	13.5	5	50	595	PUMP 100 BBLS OF TAIL CEMENT
18	Pump Tail Cement	5/6/2024	13:07	13.5	5	50	655	PUMP 150 BBLS OF TAIL CEMENT
19	Pump Tail Cement	5/6/2024	13:20	13.5	5	65	629	PUMP 215 BBLS OF TAIL CEMENT
20	Shutdown	5/6/2024	13:23					SHUT DOWN
21	Clean Pumps and Lines	5/6/2024	13:26					WASH PUMP TO THREE SIDED TANK AND BLOW BACK HARDLINE
22	Drop Top Plug	5/6/2024	13:30					DROP TOP PLUG. VERIFIED BY COMPANY MAN
23	Pump Displacement	5/6/2024	13:36	8.34	10	50	1950	START PUMPING 176 BBLS OF FRESH WATER DISPLACEMENT WITH KCL. PUMP 50 BBLS OF DISPLACEMENT
24	Pump Displacement	5/6/2024	13:41	8.34	10	50	2663	PUMP 100 BBLS OF DISPLACEMENT
25	Pump Displacement	5/6/2024	13:46	8.34	10	66	3278	PUMP 166 BBLS OF DISPLACEMENT
26	Slow Pump Rate	5/6/2024	13:48	8.34	4	10	2456	SLOW PUMP RATE TO LAND PLUG. PUMP 176 BBLS OF DISPLACEMENT
27	Land Plug	5/6/2024	13:50				3625	PLUG LANDED. FCP 2456 PSI. LAND PRESSURE 3625 PSI
28	Check Floats	5/6/2024	13:52					2 BBLS BACK UPON FLOAT CHECK
29	Safety Meeting	5/6/2024	14:00					PRE RIG DOWN SAFETY MEETING

Line	Event	Date (MM/DD/YY)	Time (HH:MM)	Density (lb/gal)	Pump Rate (bpm)	Pump Volume (bbls)	Pipe Pressure (psi)	Comment
30	Rig Down Iron	5/6/2024	14:30					RIG DOWN IRON AND HOSES
31	Safety Meeting	5/6/2024	15:00					PRE CONVOY SAFETY MEETING
32	Depart Location	5/6/2024	15:30					DEPART CUSTOMER LOCATION AND HEAD TO RCO YARD
33	End Job	5/6/2024	15:30					END JOB

## Pump Diagrams



JobMaster Program Version 5.01C1  
Job Number: 91297  
Customer: TERRA  
Well Name: FED RG 312-18-297



Job Start: Monday, May 06, 2024