



Terra Energy Partners, LLC

INTERMEDIATE POST JOB REPORT

FED RG 312-18-297 05-103-12566
S:13 T:2S R:98W Rio Blanco CO

CallSheet #: 91296
Proposal #: 76091



INTERMEDIATE Post Job Report

Attention: Mr. Dustin Childers | (936) 524-8828 | dchilders@terraep.com
Terra Energy Partners, LLC
4828 Loop Central Dr., Suite 900 | Houston, TX 77081

Dear Mr. Dustin Childers,

Thank you for the opportunity to provide cementing services on this well. American Cementing strives to achieve complete customer satisfaction. If you have any questions regarding the services or data provided, please contact American Cementing at any time.

Sincerely,

Krystal Schell

Field Engineer I | (719) 992-1830 | krystal.schell@americacementing.com

Field Office 28730 US-6, Rifle, CO 81650
Phone: (970) 657-1187

Job Details & Summary

Geometry

Type	Function	OD (in)	ID (in)	Weight (lb/ft)	Thread	Top (ft)	Bottom (ft)	Excess (%)
Casing	Outer	13.375	12.615	54.5	n/a	0	1379	0
Open Hole	Outer	n/a	12.25	n/a	n/a	1363	2698	50
Open Hole	Outer	n/a	12.25	n/a	n/a	2698	3198	50
Casing	Inner	9.625	8.921	36	n/a	0	3222	0

Timing

Event	Date/Time
ERTS	05/01/2024 13:00
Call Out	5/1/2024 09:00
Depart Facility	5/1/2024 11:30
On Location	5/1/2024 13:00
Rig Up Iron	5/1/2024 13:15
Job Started	5/1/2024 16:05
Job Completed	5/1/2024 17:26
Rig Down Iron	5/1/2024 18:00
Depart Location	5/1/2024 19:05

Equipment / People

Unit Type	Unit	Power Unit	Employee #1
Cement Trailer Float	CTF-286	TRC-195	Daniel Balint
Light Duty Vehicles	LDV-092		Collin Woronovitch
Cement Pump Float	CPF-052	TRH-1140	Jacob Kirchenwitz
Light Duty Vehicles	LDV-147		Eric Brown

General Job Information

Metrics	Value
Well Fluid Density	9 lb/gal
Well Fluid Type	WBM
Rig Circulation Vol	400 bbls
Rig Circulation Time	1 hours
Calculated Displacement	245 bbls
Actual Displacement	245 bbls
Total Spacer to Surface	0 bbls
Total CMT to Surface	0 bbls
Well Topped Out	No
Top Out Volume	N/A bbls

Job Details

Metrics	Value
Flare Prior to Job	No
Flare Prior to Job	N/A units
Flare During Job	No
Flare During Job	N/A units
Flare at End of Job	No
Flare at End of Job	N/A units
Well Full Prior to Job	Yes
Well Fluid Density Into Well	9 lb/gal
Well Fluid Density Out of Well	9 lb/gal

Job Details (cont.)

Metrics	Value
BHCT	87 °F
BHST	118 °F

Water Analysis

Metrics	Value	Recommended
Water Source	Upright Rig Tank	
Temperature	51 °F	50-80 °F
pH Level	6	5.5-8.5
Chlorides	300 mg/L	0-3000 mg/L
Total Alkalinity	100	0-1000
Total Hardness	10 mg/L	0-500 mg/L
Carbonates	10 mg/L	0-100 mg/L
Sulfates	150 mg/L	0-1500 mg/L
Potassium	200 mg/L	0-3000 mg/L
Iron	10 mg/L	0-300 mg/L

Circulation

Lost Circulation Experienced

No

Job Execution Information

Fluid	Product	Function	Density (lb/gal)	Yield (ft ³ /sk)	Water Rq. (gal/sk)	Water Rq. (gal/bbl)	Volume (sks)	Volume (bbl)	Designed Top (ft)
1	Water	Flush	8.34			42.00		20.00	1959
2	Lead	Lead	12.30	2.31	13.16		102.00	41.95	2198
3	Tail	Tail	12.80	2.03	11.16		125.00	45.29	2698
4	Water	DisplacementFinal	8.34			42.00		245.00	0

Job Fluid Details

Fluid	Type	Fluid	Product	Function	Conc.	Uom
2	Lead	Lead	ASTM TYPE IL	Cement	100.00	%
2	Lead	Lead	A-10	Accelerator	5.00	%BWOB
2	Lead	Lead	A-2	Accelerator	3.00	lb/sk
2	Lead	Lead	A-7P	Accelerator	2.00	lb/sk
2	Lead	Lead	IntegraSeal POLI	LostCirculation	0.25	lb/sk
2	Lead	Lead	STATIC FREE	Other	0.01	lb/sk
2	Lead	Lead	XCem-308	Defoamer	0.30	lb/sk
3	Tail	Tail	ASTM TYPE IL	Cement	100.00	%
3	Tail	Tail	A-10	Accelerator	5.00	%BWOB
3	Tail	Tail	A-2	Accelerator	2.00	lb/sk
3	Tail	Tail	A-7P	Accelerator	2.00	lb/sk
3	Tail	Tail	IntegraSeal POLI	LostCirculation	0.25	lb/sk
3	Tail	Tail	STATIC FREE	Other	0.01	lb/sk
3	Tail	Tail	XCem-308	Defoamer	0.30	lb/sk

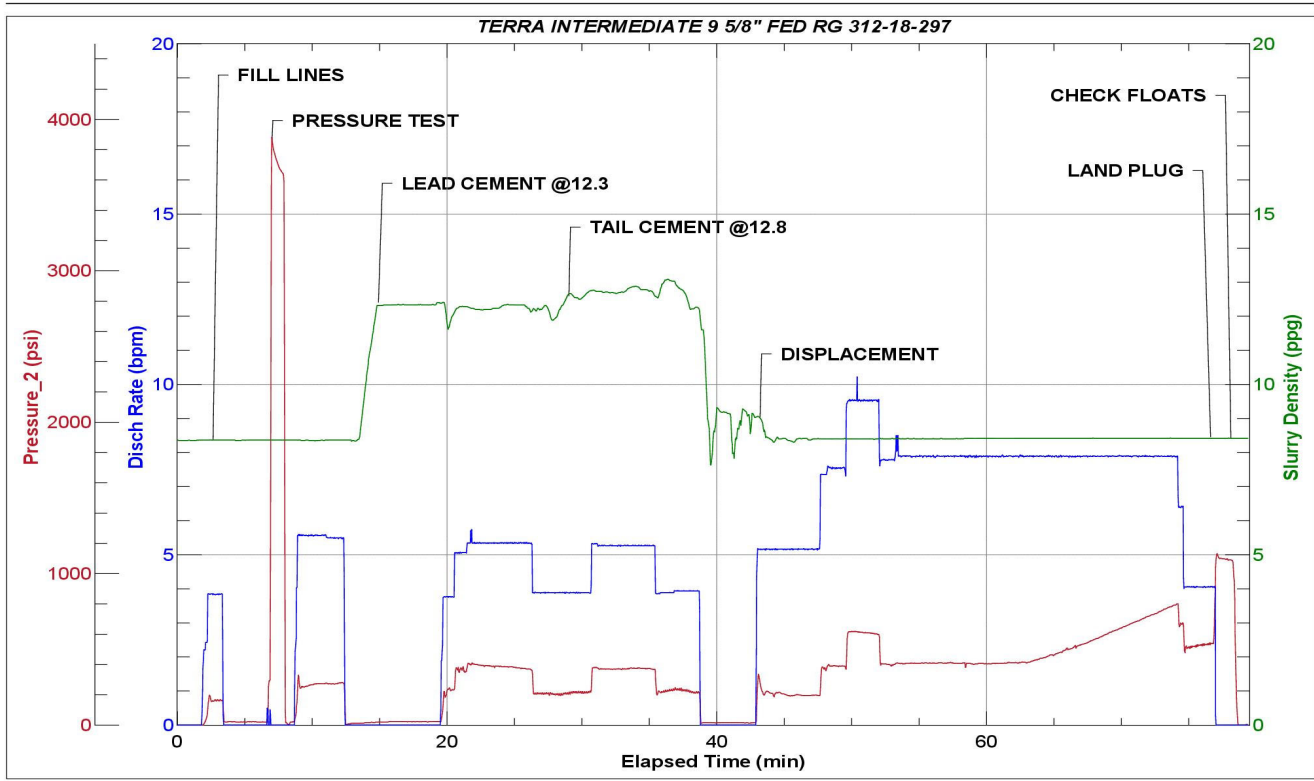
Job Logs

Line	Event	Date (MM/DD/YY)	Time (HH:MM)	Density (lb/gal)	Pump Rate (bpm)	Pump Volume (bbls)	Pipe Pressure (psi)	Comment
1	Callout	5/1/2024	09:00					CREW AT THE YARD INSPECTING AND PRE-TRIPPING EQUIPMENT
2	Safety Meeting	5/1/2024	11:15					PRE-CONVOY SAFETY MEETING
3	Depart Location	5/1/2024	11:30					DEPART RCO YARD TO CUSTOMER LOCATION
4	Arrive On Location	5/1/2024	13:00					ARRIVED ON LOCATION PER CUSTOMER REQUEST
5	Safety Meeting	5/1/2024	13:15					PRE-RIG UP SAFETY MEETING
6	Rig Up Iron	5/1/2024	13:45					RIG UP IRON AND HOSES
7	Safety Meeting	5/1/2024	15:50					PRE JOB-SAFETY MEETING WITH RIG CREW AND COMPANY MAN
8	Start Job	5/1/2024	16:05					START JOB
9	Fill Lines	5/1/2024	16:06	8.34	4	5	179	FILL LINES WITH 5 BBLs OF FRESH WATER
10	Pressure Test Lines	5/1/2024	16:10	8.34	1	1	3886	PRESSURE TEST LINES TO 3886 PSI
11	Pump Spacer	5/1/2024	16:15	8.34	5	20	255	START PUMPING FRESH WATER SPACER
12	Pump Lead Cement	5/1/2024	16:26	12.3	5	0	367	START MIXING AND PUMPING 42 BBLs OF LEAD CEMENT @12.3 PPG (2.31 YLD, 13.16 GPS) VERIFIED WITH MUD SCALE
13	Pump Lead Cement	5/1/2024	16:34	12.3	5	42	374	PUMP 42 BBLs OF LEAD CEMENT
14	Pump Tail Cement	5/1/2024	16:36	12.8	5	0	380	START MIXING AND PUMPING 45 BBLs OF TAIL CEMENT @12.8 PPG (2.03 YLD, 11.16 GPS) VERIFIED WITH MUD SCALE
15	Pump Tail Cement	5/1/2024	16:44	12.8	4	45	222	PUMP 45 BBLs OF TAIL CEMENT
16	Shutdown	5/1/2024	16:45					SHUTDOWN/WASH UP
17	Drop Top Plug	5/1/2024	16:48					DROP TOP PLUG VERIFIED BY COMPANY MAN
18	Pump Displacement	5/1/2024	16:48	8.34	5	0	256	START PUMPING 245 BBLs OF FRESH WATER DISPLACEMENT
19	Pump Displacement	5/1/2024	16:57	8.34	9.5	50	616	PUMP 50 BBLs OF FRESH WATER DISPLACEMENT
20	Pump Displacement	5/1/2024	17:02	8.34	8	50	450	PUMP 100 BBLs OF FRESH WATER DISPLACEMENT
21	Pump Displacement	5/1/2024	17:08	8.34	8	50	435	PUMP 150 BBLs OF FRESH WATER DISPLACEMENT
22	Pump Displacement	5/1/2024	17:15	8.34	8	50	652	PUMP 200 BBLs OF FRESH WATER DISPLACEMENT
23	Pump Displacement	5/1/2024	17:19	8.34	8	35	802	PUMP 235 BBLs OF FRESH WATER DISPLACEMENT
24	Slow Pump Rate	5/1/2024	17:20	8.34	4	10	554	SLOW RATE AND PREPARE TO LAND PLUG @245 BBLs AWAY
25	Land Plug	5/1/2024	17:24				1099	PLUG LANDED. FCP 554 PSI, LANDING PRESSURE 1099 PSI
26	Check Floats	5/1/2024	17:26					1 BBL BACK UPON FLOAT CHECK
27	Safety Meeting	5/1/2024	17:45					PRE-RIG DOWN SAFETY MEETING
28	Rig Down Iron	5/1/2024	18:00					RIG DOWN IRON AND HOSES
29	Safety Meeting	5/1/2024	19:00					PRE-CONVOY SAFETY MEETING
30	Depart Location	5/1/2024	19:05					DEPART CUSTOMER LOCATION TO RCO YARD
31	End Job	5/1/2024	19:05					END JOB

Pump Diagrams



JobMaster Program Version 5.01C1
 Job Number: 91296
 Customer: TERRA
 Well Name: FED RG 312-18-297



Job Start: Wednesday, May 01, 2024