



Terra Energy Partners, LLC

INTERMEDIATE POST JOB REPORT

FED RG 512-18-297 05-103-12580
S:13 T:2S R:98W Rio Blanco CO

CallSheet #: 91141
Proposal #: 75845



INTERMEDIATE Post Job Report

Attention: Mr. Dustin Childers | (936) 524-8828 | dchilders@terraep.com
Terra Energy Partners, LLC
4828 Loop Central Dr., Suite 900 | Houston, TX 77081

Dear Mr. Dustin Childers,

Thank you for the opportunity to provide cementing services on this well. American Cementing strives to achieve complete customer satisfaction. If you have any questions regarding the services or data provided, please contact American Cementing at any time.

Sincerely,

Addison Kneale

Field Engineer I | (904) 228-9560 | addison.kneale@americacementing.com

Field Office 28730 US-6, Rifle, CO 81650
Phone: (970) 657-1187

Job Details & Summary

Geometry

Type	Function	OD (in)	ID (in)	Weight (lb/ft)	Thread	Top (ft)	Bottom (ft)	Excess (%)
Casing	Outer	13.375	12.615	54.5	n/a	0	1357	0
Open Hole	Outer	n/a	12.25	n/a	n/a	1357	2617	50
Open Hole	Outer	n/a	12.25	n/a	n/a	2617	3168	50
Casing	Inner	9.625	8.921	36	n/a	0	3161	0

Equipment / People

Unit Type	Unit	Power Unit	Employee #1	Employee #2
Cement Trailer Float	CTF-246	TRC-202	Daniel Balint	
Cement Pump Float	CPF-012	TRH-964	Ryan Bonin	
Light Duty Vehicles	LDV-147		Eric Brown	
Light Duty Vehicles	LDV-146		Matthew Pinkney	
Light Duty Vehicles	LDV-087		Mark Aden	Krystal Schell

Timing

Event	Date/Time
ERTS	04/23/2024 19:00
Call Out	4/23/2024 12:30
Depart Facility	4/23/2024 17:00
On Location	4/23/2024 19:00
Rig Up Iron	4/23/2024 19:30
Job Started	4/24/2024 02:15
Job Completed	4/24/2024 03:16
Rig Down Iron	4/24/2024 04:00
Depart Location	4/24/2024 04:50

General Job Information

Metrics	Value
Well Fluid Density	9 lb/gal
Well Fluid Type	WBM
Rig Circulation Vol	400 bbls
Rig Circulation Time	1 hours
Calculated Displacement	244 bbls
Actual Displacement	244 bbls
Total Spacer to Surface	0 bbls
Total CMT to Surface	0 bbls
Well Topped Out	No
Top Out Volume	NO bbls

Job Details

Metrics	Value
Well Full Prior to Job	Yes
Well Fluid Density Into Well	9 lb/gal
Well Fluid Density Out of Well	9 lb/gal

Job Details (cont.)

Metrics	Value
BHCT	87 °F
BHST	118 °F

Water Analysis

Metrics	Value	Recommended
Water Source	None	
Temperature	60 °F	50-80 °F
pH Level	6	5.5-8.5
Chlorides	300 mg/L	0-3000 mg/L
Total Alkalinity	100	0-1000
Total Hardness	50 mg/L	0-500 mg/L
Carbonates	10 mg/L	0-100 mg/L
Sulfates	50 mg/L	0-1500 mg/L
Potassium	200 mg/L	0-3000 mg/L
Iron	10 mg/L	0-300 mg/L

Circulation

Lost Circulation Experienced
No

Job Execution Information

Fluid	Product	Function	Density (lb/gal)	Yield (ft ³ /sk)	Water Rq. (gal/sk)	Water Rq. (gal/bbl)	Volume (sks)	Volume (bbl)	Designed Top (ft)
1	Water	Flush	8.34			42.00		20.00	1902
2	Lead	Lead	12.30	2.31	13.16		102.00	41.95	2141
3	Tail	Tail	12.80	2.03	11.16		125.00	45.29	2641
4	Water	DisplacementFinal	8.34			42.00		240.00	0

Job Fluid Details

Fluid	Type	Fluid	Product	Function	Conc.	Uom
2	Lead	Lead	ASTM TYPE IL	Cement	100.00	%
2	Lead	Lead	A-10	Accelerator	5.00	%BWOB
2	Lead	Lead	A-2	Accelerator	3.00	lb/sk
2	Lead	Lead	A-7P	Accelerator	2.00	lb/sk
2	Lead	Lead	IntegraSeal POLI	LostCirculation	0.25	lb/sk
2	Lead	Lead	STATIC FREE	Other	0.01	lb/sk
2	Lead	Lead	XCem-308	Defoamer	0.30	lb/sk
3	Tail	Tail	ASTM TYPE IL	Cement	100.00	%
3	Tail	Tail	A-10	Accelerator	5.00	%BWOB
3	Tail	Tail	A-2	Accelerator	2.00	lb/sk
3	Tail	Tail	A-7P	Accelerator	2.00	lb/sk
3	Tail	Tail	IntegraSeal POLI	LostCirculation	0.25	lb/sk
3	Tail	Tail	STATIC FREE	Other	0.01	lb/sk
3	Tail	Tail	XCem-308	Defoamer	0.30	lb/sk

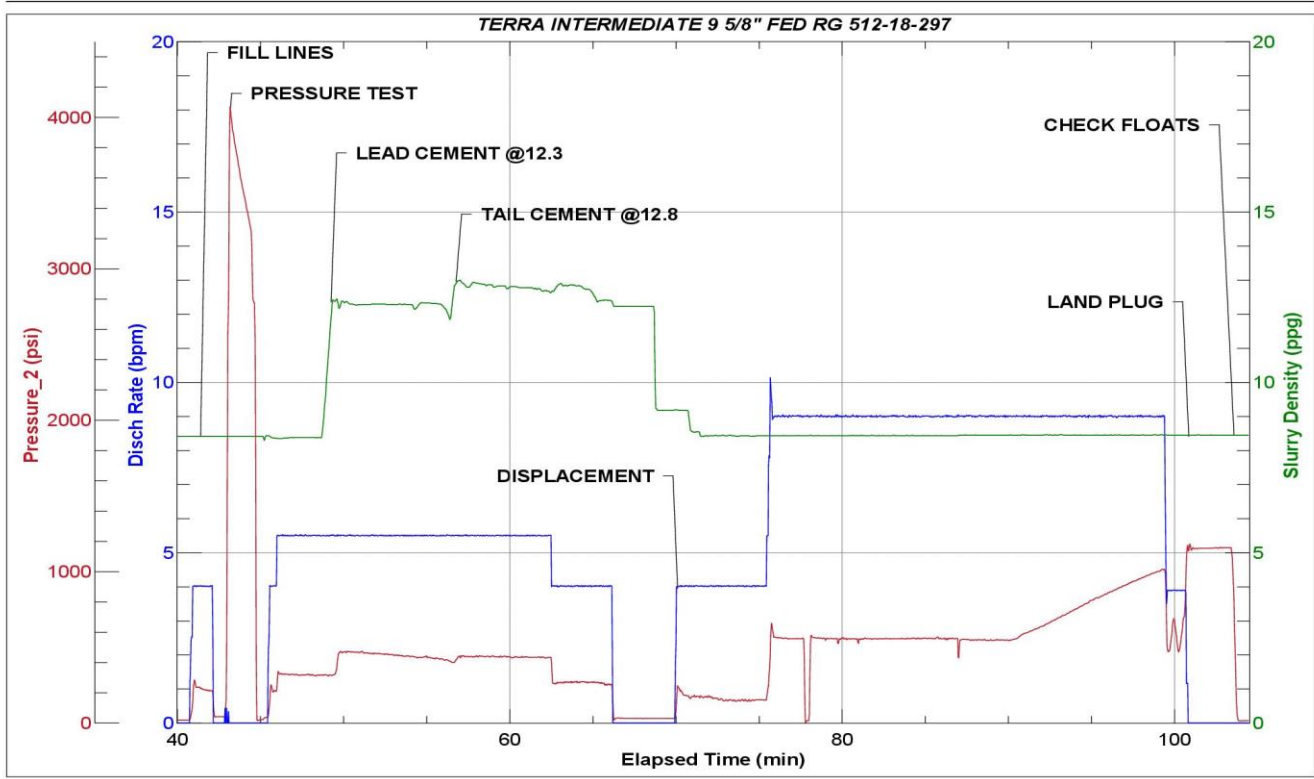
Job Logs

Line	Event	Date (MM/DD/YY)	Time (HH:MM)	Density (lb/gal)	Pump Rate (bpm)	Pump Volume (bbls)	Pipe Pressure (psi)	Comment
1	Callout	4/23/2024	12:30					CREW CALLED IN TO INSPECT AND PRE TRIP EQUIPMENT
2	Safety Meeting	4/23/2024	15:30					PRE CONVOY SAFETY MEETING
3	Depart Location	4/23/2024	17:00					DEPART RCO YARD
4	Arrive On Location	4/23/2024	19:00					ARRIVE ON LOCATION PER CUSTOMER REQUEST
5	Safety Meeting	4/23/2024	19:15					PRE RIG UP SAFETY MEETING
6	Rig Up Iron	4/23/2024	19:30					RIG UP IRON
7	Safety Meeting	4/24/2024	01:07					PRE JOB SAFETY MEETING WITH RIG CREW AND COMPANY MAN
8	Start Job	4/24/2024	02:15					START JOB/ HAD ISSUSE WITH CEMENT HEAD CROSS OVER CAUSED A 40 MIN DELAY
9	Fill Lines	4/24/2024	02:15	8.34	4	5	237	FILL LINES WITH 5 BBLS OF FRESH WATER
10	Pressure Test Lines	4/24/2024	02:16	8.34	1	1	3620	PRESSURE TEST LINES TO 3620
11	Pump Spacer	4/24/2024	02:19	8.34	5	20	320	PUMP 20 BBLS OF FRESH WATER SPACER
12	Pump Lead Cement	4/24/2024	02:23	12.3	5	0	464	START MIXING AND PUMPING LEAD CEMENT @ 12.3 PPG (2.31 YLD, 13.16 GPS)
13	Pump Lead Cement	4/24/2024	02:30	12.3	5	42	413	PUMP 42 BBLS OF LEAD CEMENT
14	Pump Tail Cement	4/24/2024	02:31	12.8	5	0	439	START MIXING AND PUMPING TAIL CEMENT @ 12.8 PPG (2.03 YLD, 11.16 GPS)
15	Pump Tail Cement	4/24/2024	02:39	12.8	4	45	268	PUMP 45 BBLS OF TAIL CEMENT
16	Shutdown	4/24/2024	02:39					SHUTDOWN AND WASH UP
17	Drop Top Plug	4/24/2024	02:43					DROP PLUG
18	Pump Displacement	4/24/2024	02:43	8.34	9	50	561	START 240 BBL FRESH WATER DISPLACEMENT. PUMP 50 BBLS OF FRESH WATER DISPLACEMENT
19	Pump Displacement	4/24/2024	02:52	8.34	9	50	557	PUMP 100 BBLS OF FRESH WATER DISPLACEMENT
20	Pump Displacement	4/24/2024	02:57	8.34	9	50	551	PUMP 150 BBLS OF FRESH WATER DISPLACEMENT
21	Pump Displacement	4/24/2024	03:03	8.34	9	50	551	PUMP 200 BBLS OF FRESH WATER DISPLACEMENT
22	Pump Displacement	4/24/2024	03:09	8.34	9	31	1022	PUMP 231 BBLS OF FRESH WATER DISPLACEMENT FCP @ 9 BPM IS 1022 PSI
23	Slow Pump Rate	4/24/2024	03:12	8.34	4	10	623	SLOW PUMP RATE TO PREPARE TO LAND THE PLUG. PUMP 241 BBLS OF FRESH WATER DISPLACEMENT
24	Land Plug	4/24/2024	03:15				1153	LAND PLUG. FCP 623 LAND PRESSURE IS 1153 PSI
25	Check Floats	4/24/2024	03:16					FLOATS HOLD UPON CHECK. 1 BBL BACK
26	Safety Meeting	4/24/2024	03:20					PRE RIG DOWN SAFETY MEETING
27	Rig Down Iron	4/24/2024	04:00					RIG DOWN IRON
28	Safety Meeting	4/24/2024	04:00					PRE CONVOY SAFETY MEETING
29	Depart Location	4/24/2024	04:45					DEPART LOCATION FOR RCO YARD
30	End Job	4/24/2024	04:50					END JOB

Pump Diagrams



JobMaster Program Version 5.01C1
 Job Number: 91141
 Customer: TERRA
 Well Name: FED RG 512-18-297



Job Start: Wednesday, April 24, 2024