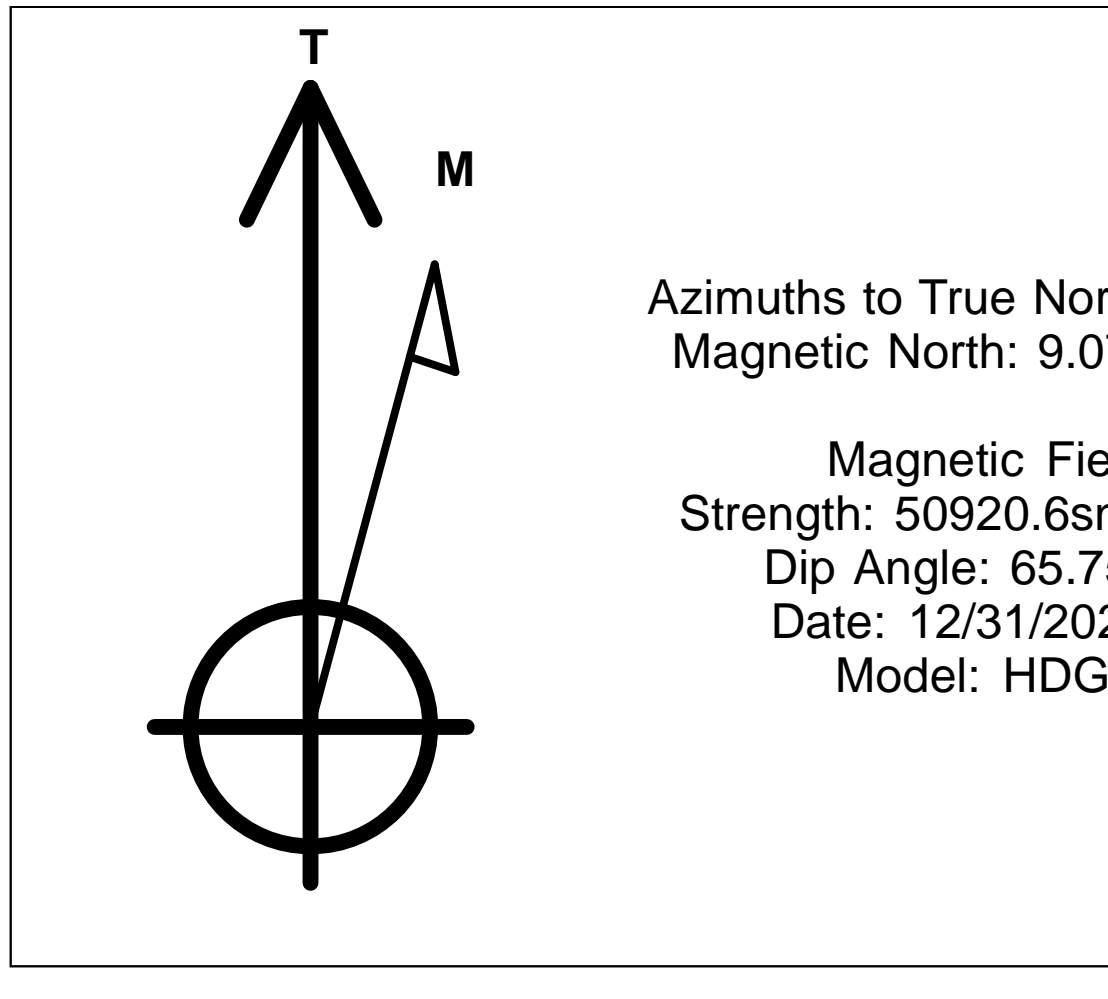


Fed 298-13-1 Pad  
 RG 13-18-297  
 Well RG 13-18-297 - Slot RG 13-18-297 B5, True North  
 Surveys

Terra Energy Partners, LLP  
 RG 13-18-297  
 Garfield County, CO (Nad 83)  
 RKB @ 30' @ 6697.00ft

PROJECT DETAILS: Garfield County, CO (Nad 83)

Geodetic System: US State Plane 1983  
 Datum: North American Datum 1983  
 Ellipsoid: GRS 1980  
 Zone: Colorado Central Zone  
 System Datum: Mean Sea Level



WELL DETAILS: RG 13-18-297

+N/-S	+E/-W	Northing	Ground Level:	Easting	6667.00	Latitude	Longitude	Slot
0.00	0.00	1754878.080		2203536.170		39.871800	-108.337946	RG 13-18-297 B5

DESIGN TARGET DETAILS

Name	TVD	+N/-S	+E/-W	Northing	Easting	Latitude	Longitude
VP	8087.00	1293.39	2100.07	1756105.240	2205675.610	39.875350	-108.330464
BHL	1867.00	1293.39	2100.07	1756105.240	2205675.610	39.875350	-108.330464

ANNOTATIONS

TVD	MD	Inc	Azi	+N/-S	+E/-W	Vsect	Departure	Annotation
389.81	390.00	3.07	37.63	8.27	6.38	9.77	10.45	First Survey @ 390 MD/ 389.81 TVD
11444.01	11875.00	3.47	255.86	1310.12	2044.32	2427.71	2665.87	PTB @ 11875 MD/ 1144.01 TVD

SLOTS

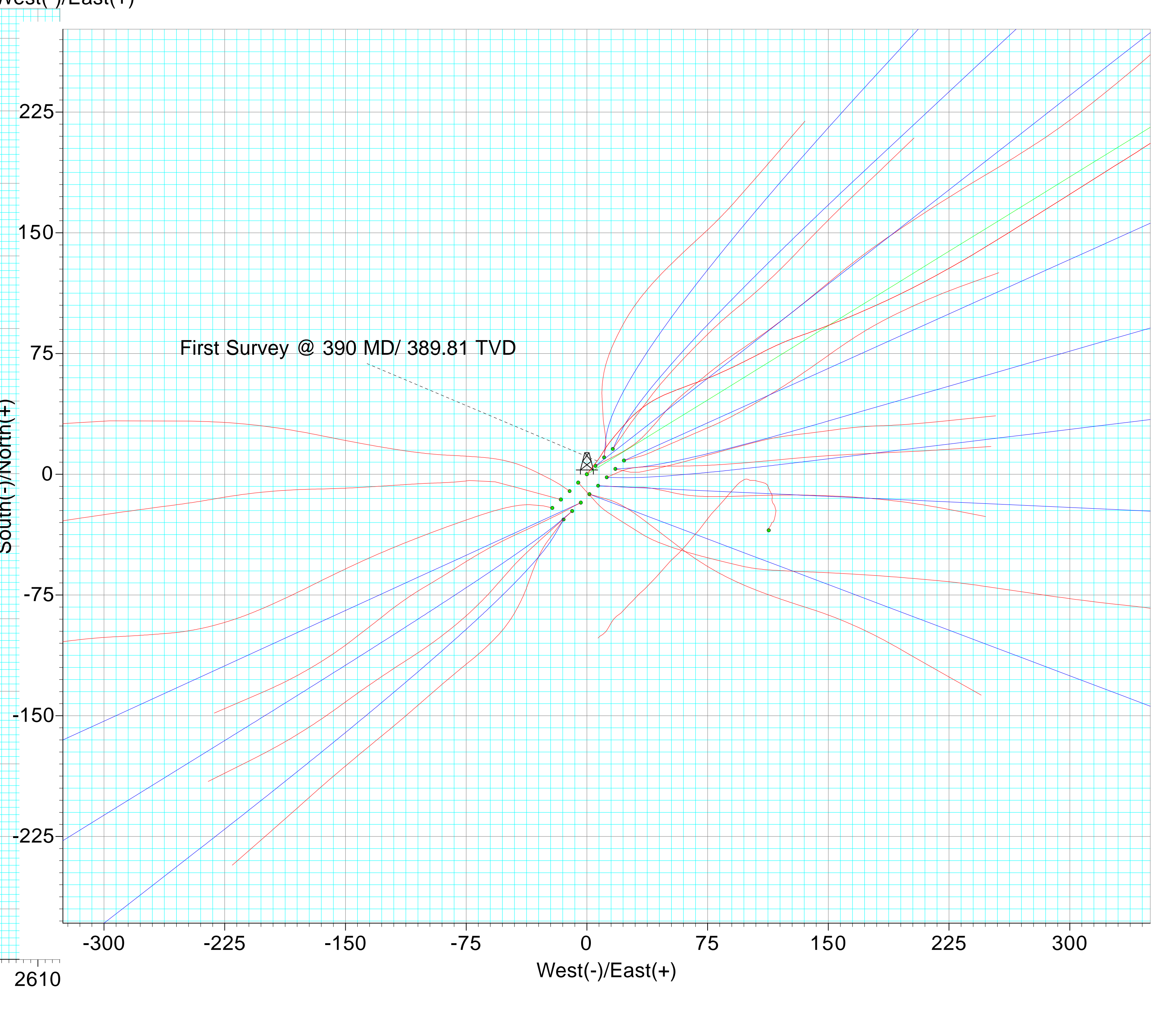
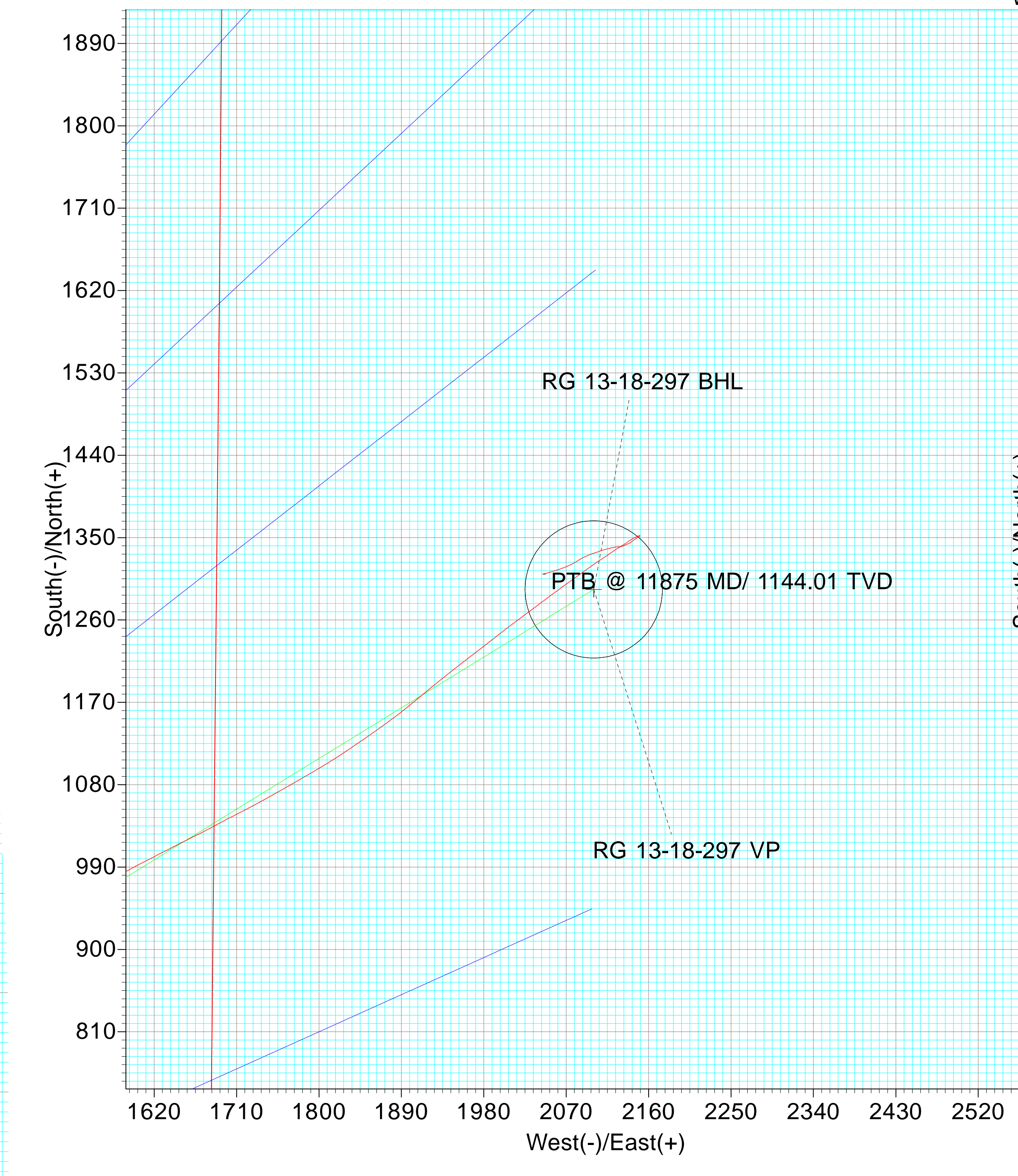
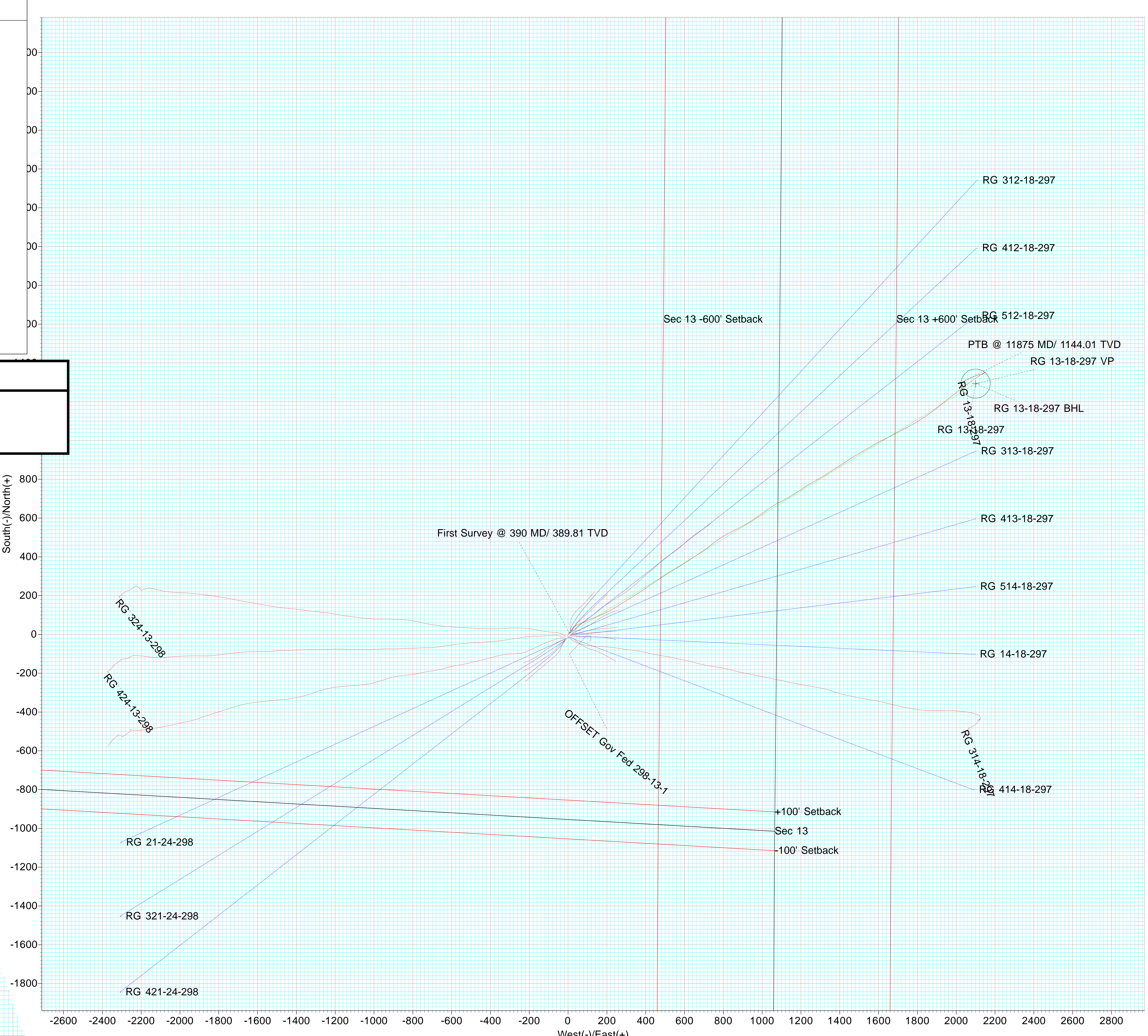
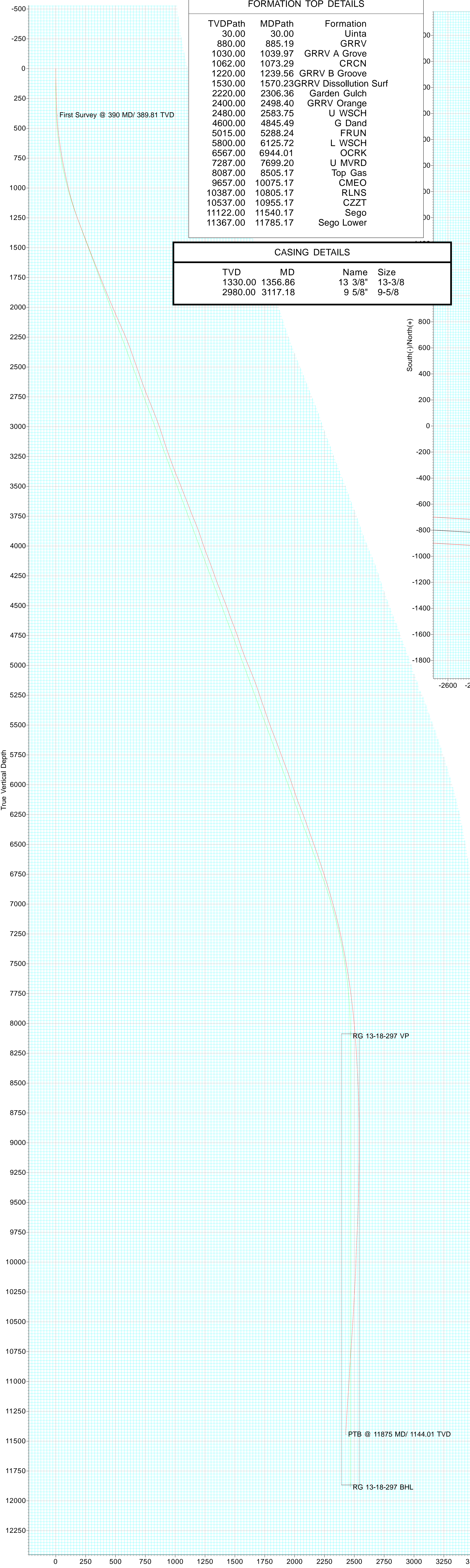
Slot Name	+N/-S	+E/-W	Northing	Easting
RG 13-18-297 B5	0.00	0.00	1754878.080	2203536.170
RG 14-18-297 A5	-7.16	6.99	1754870.710	2203542.930
RG 21-24-298 A3	-17.64	-3.75	1754860.570	2203531.870
RG 312-18-297 B7	10.47	10.74	1754888.210	2203547.230
RG 313-18-297 A8	8.55	23.08	1754885.900	2203559.510
RG 314-18-297 B4	-5.23	-5.36	1754873.020	2203530.650
RG 321-24-298 A2	-22.87	-9.12	1754855.510	2203526.340
RG 324-13-298 B3	-10.48	-10.73	1754867.940	2203525.120
RG 412-18-297 B8	15.70	16.11	1754893.270	2203552.760
RG 413-18-297 A7	3.31	17.72	1754880.840	2203553.980
RG 414-18-297 A4	-12.40	1.62	1754865.640	2203537.400
RG 421-24-298 A1	-28.11	-14.48	1754850.440	2203520.820
RG 424-13-298 B2	-15.71	-16.10	1754862.880	2203519.590
RG 512-18-297 B6	5.23	5.37	1754883.140	2203541.700
RG 514-18-297 A6	-1.93	12.35	1754875.770	2203548.450
RG 524-13-298 B1	-20.95	-21.47	1754857.810	2203514.060

FORMATION TOP DETAILS

TVDPATH	MDPATH	Formation
30.00	30.00	Uinta
880.00	885.19	GRRV
1030.00	1039.97	GRRV A Grove
1062.00	1073.29	CRCN
1220.00	1239.56	GRRV B Groove
1530.00	1570.23	GRRV Dissolution Surf
2220.00	2306.36	Garden Gulch
2400.00	2498.40	GRRV Orange
2480.00	2583.75	U WSCH
4600.00	4845.49	G Dand
5015.00	5288.24	FRUN
5800.00	6125.72	L WSCH
6567.00	6944.01	OCRK
7287.00	7699.20	U MVRD
8087.00	8505.17	Top Gas
9657.00	10075.17	CMEO
10387.00	10805.17	RLNS
10537.00	10955.17	CZT
11122.00	11540.17	Sego
11367.00	11785.17	Sego Lower

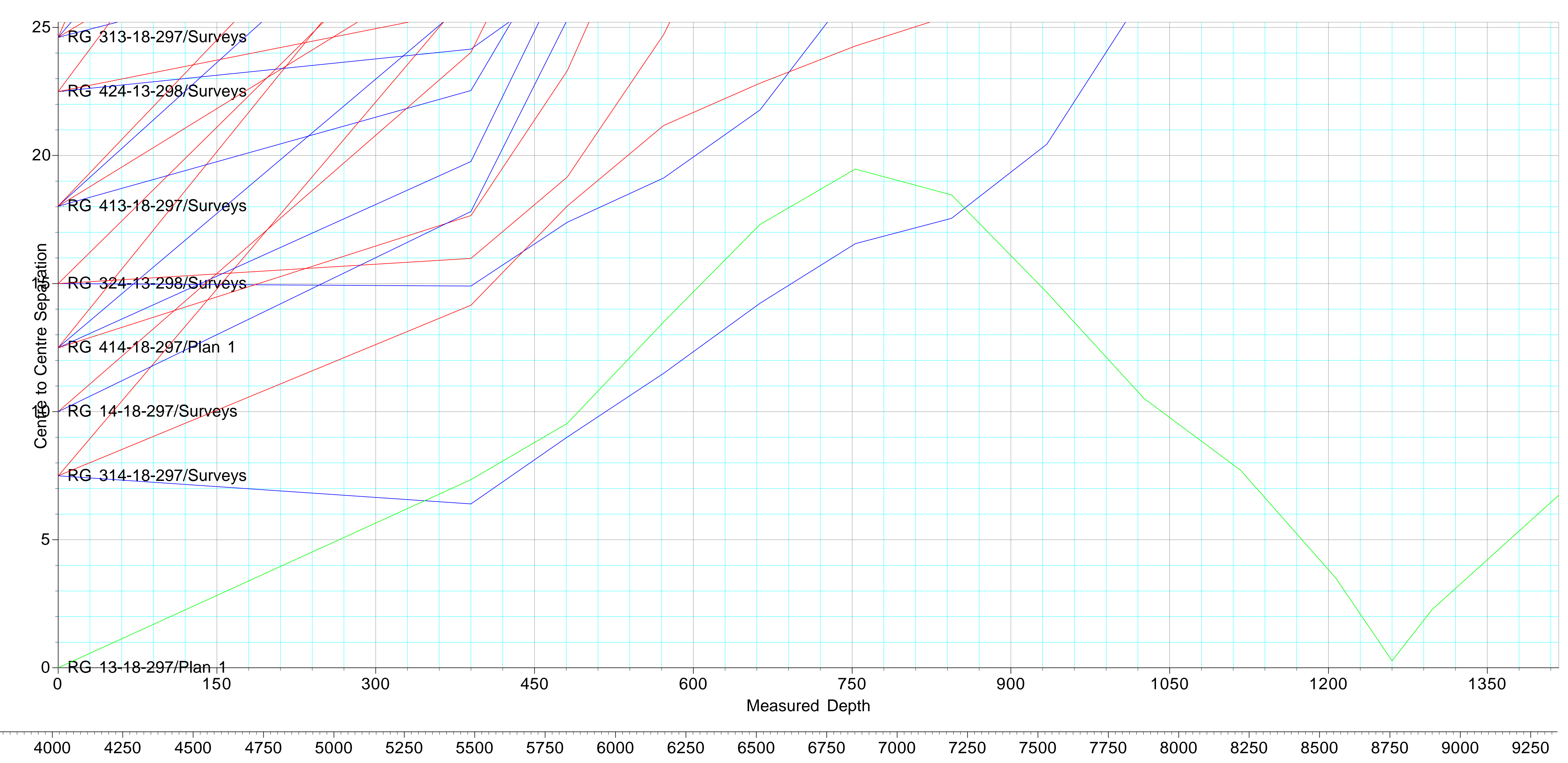
CASING DETAILS

TVD	MD	Name	Size
1330.00	1356.86	13 3/8"	13-3/8"
2980.00	3117.18	9 5/8"	9-5/8"



ANNOTATIONS

TVD	MD	Inc	Azi	+N/-S	+E/-W	Vsect	Departure	Annotation
389.81	390.00	3.07	37.63	8.27	6.38	9.77	10.45	First Survey @ 390 MD/ 389.81 TVD
11444.01	11875.00	3.47	255.86	1310.12	2044.32	2427.71	2665.87	PTB @ 11875 MD/ 1144.01 TVD





# **Terra Energy Partners, LLP**

**Garfield County, CO (Nad 83)**

**Fed 298-13-1 Pad**

**RG 13-18-297 - Slot RG 13-18-297 B5**

**OWB**

**Survey: Surveys**

## **Standard Survey Report**

**24 April, 2024**



<b>Company:</b>	Terra Energy Partners, LLP	<b>Local Co-ordinate Reference:</b>	Well RG 13-18-297 - Slot RG 13-18-297 B5
<b>Project:</b>	Garfield County, CO (Nad 83)	<b>TVD Reference:</b>	RKB @ 30' @ 6697.00ft
<b>Site:</b>	Fed 298-13-1 Pad	<b>MD Reference:</b>	RKB @ 30' @ 6697.00ft
<b>Well:</b>	RG 13-18-297	<b>North Reference:</b>	True
<b>Wellbore:</b>	OWB	<b>Survey Calculation Method:</b>	Minimum Curvature
<b>Design:</b>	Surveys	<b>Database:</b>	NN

<b>Project</b>	Garfield County, CO (Nad 83)		
<b>Map System:</b>	US State Plane 1983	<b>System Datum:</b>	Mean Sea Level
<b>Geo Datum:</b>	North American Datum 1983		
<b>Map Zone:</b>	Colorado Central Zone		

<b>Site</b>	Fed 298-13-1 Pad				
<b>Site Position:</b>		<b>Northing:</b>	1,754,850.440 usft	<b>Latitude:</b>	39.871723
<b>From:</b>	Map	<b>Easting:</b>	2,203,520.820 usft	<b>Longitude:</b>	-108.337998
<b>Position Uncertainty:</b>	0.00 ft	<b>Slot Radius:</b>	13-3/16 "	<b>Grid Convergence:</b>	-1.79 °

<b>Well</b>	RG 13-18-297 - Slot RG 13-18-297 B5					
<b>Well Position</b>	<b>+N/-S</b>	0.00 ft	<b>Northing:</b>	1,754,878.080 usft	<b>Latitude:</b>	39.871800
	<b>+E/-W</b>	0.00 ft	<b>Easting:</b>	2,203,536.170 usft	<b>Longitude:</b>	-108.337946
<b>Position Uncertainty</b>		0.00 ft	<b>Wellhead Elevation:</b>	6,697.00 ft	<b>Ground Level:</b>	6,667.00 ft

<b>Wellbore</b>	OWB				
<b>Magnetics</b>	<b>Model Name</b>	<b>Sample Date</b>	<b>Declination (°)</b>	<b>Dip Angle (°)</b>	<b>Field Strength (nT)</b>
	HDGM	12/31/2023	9.07	65.75	50,921

<b>Design</b>	Surveys				
<b>Audit Notes:</b>					
<b>Version:</b>	1.0	<b>Phase:</b>	ACTUAL	<b>Tie On Depth:</b>	0.00
<b>Vertical Section:</b>	<b>Depth From (TVD) (ft)</b>	<b>+N/-S (ft)</b>	<b>+E/-W (ft)</b>	<b>Direction (°)</b>	
	0.00	0.00	0.00	58.37	

<b>Survey Program</b>	<b>Date</b>	4/21/2024			
<b>From (ft)</b>	<b>To (ft)</b>	<b>Survey (Wellbore)</b>	<b>Tool Name</b>	<b>Description</b>	
390.00	11,875.00	Surveys (OWB)	OWSG (REV5) MWD HDGM	OWSG MWD - Standard	

<b>Survey</b>										
<b>Measured Depth (ft)</b>	<b>Inclination (°)</b>	<b>Azimuth (°)</b>	<b>Vertical Depth (ft)</b>	<b>+N/-S (ft)</b>	<b>+E/-W (ft)</b>	<b>Vertical Section (ft)</b>	<b>Dogleg Rate (°/100usft)</b>	<b>Build Rate (°/100usft)</b>	<b>Turn Rate (°/100usft)</b>	
0.00	0.00	0.00	0.00	0.00	0.00	0.00	0.00	0.00	0.00	
390.00	3.07	37.63	389.81	8.27	6.38	9.77	0.79	0.79	0.00	
<b>First Survey @ 390 MD/ 389.81 TVD</b>										
481.00	5.80	31.04	480.53	14.14	10.24	16.13	3.05	3.00	-7.24	
572.00	7.91	39.30	570.88	22.93	16.58	26.14	2.55	2.32	9.08	
663.00	8.70	42.02	660.92	32.89	25.15	38.66	0.97	0.87	2.99	
753.00	10.10	54.50	749.72	42.53	36.13	53.07	2.74	1.56	13.87	
844.00	11.82	68.13	839.08	50.64	51.28	70.22	3.41	1.89	14.98	
934.00	12.34	70.24	927.08	57.32	68.89	88.71	0.76	0.58	2.34	
1,026.00	13.84	64.70	1,016.69	65.35	88.09	109.27	2.12	1.63	-6.02	
1,117.00	16.34	62.41	1,104.55	75.93	109.28	132.86	2.82	2.75	-2.52	

<b>Company:</b>	Terra Energy Partners, LLP	<b>Local Co-ordinate Reference:</b>	Well RG 13-18-297 - Slot RG 13-18-297 B5
<b>Project:</b>	Garfield County, CO (Nad 83)	<b>TVD Reference:</b>	RKB @ 30' @ 6697.00ft
<b>Site:</b>	Fed 298-13-1 Pad	<b>MD Reference:</b>	RKB @ 30' @ 6697.00ft
<b>Well:</b>	RG 13-18-297	<b>North Reference:</b>	True
<b>Wellbore:</b>	OWB	<b>Survey Calculation Method:</b>	Minimum Curvature
<b>Design:</b>	Surveys	<b>Database:</b>	NN

Survey										
Measured Depth (ft)	Inclination (°)	Azimuth (°)	Vertical Depth (ft)	+N/-S (ft)	+E/-W (ft)	Vertical Section (ft)	Dogleg Rate (°/100usft)	Build Rate (°/100usft)	Turn Rate (°/100usft)	
1,207.00	18.76	70.59	1,190.37	86.61	134.15	159.64	3.83	2.69	9.09	
1,298.00	21.00	67.42	1,275.94	97.73	163.02	190.05	2.73	2.46	-3.48	
1,476.00	20.87	61.10	1,442.21	125.31	220.23	253.23	1.27	-0.07	-3.55	
1,566.00	21.18	58.64	1,526.22	141.51	248.15	285.50	1.04	0.34	-2.73	
1,657.00	21.62	57.58	1,610.95	159.06	276.34	318.70	0.64	0.48	-1.16	
1,748.00	21.88	57.93	1,695.47	177.05	304.86	352.42	0.32	0.29	0.38	
1,838.00	21.40	57.76	1,779.13	194.71	332.96	385.61	0.54	-0.53	-0.19	
1,929.00	22.28	56.97	1,863.59	212.97	361.46	419.46	1.02	0.97	-0.87	
2,020.00	23.20	56.17	1,947.52	232.35	390.82	454.62	1.07	1.01	-0.88	
2,110.00	23.02	56.17	2,030.30	252.02	420.16	489.91	0.20	-0.20	0.00	
2,201.00	23.73	56.00	2,113.83	272.17	450.12	525.99	0.78	0.78	-0.19	
2,292.00	24.12	55.56	2,197.01	292.92	480.64	562.86	0.47	0.43	-0.48	
2,383.00	21.66	58.11	2,280.84	312.31	510.23	598.23	2.91	-2.70	2.80	
2,475.00	19.55	57.23	2,366.95	329.61	537.60	630.60	2.32	-2.29	-0.96	
2,566.00	19.42	60.57	2,452.74	345.29	563.58	660.94	1.23	-0.14	3.67	
2,658.00	19.68	58.20	2,539.44	360.97	590.06	691.71	0.91	0.28	-2.58	
2,749.00	19.37	56.26	2,625.21	377.42	615.64	722.12	0.79	-0.34	-2.13	
2,841.00	21.40	56.09	2,711.44	395.26	642.25	754.14	2.21	2.21	-0.18	
2,932.00	22.23	56.97	2,795.92	413.91	670.47	787.94	0.98	0.91	0.97	
3,023.00	21.66	55.38	2,880.33	432.83	698.72	821.92	0.90	-0.63	-1.75	
3,092.00	20.87	53.10	2,944.63	447.45	719.03	846.87	1.66	-1.14	-3.30	
3,246.00	17.49	51.25	3,090.06	478.41	759.02	897.17	2.23	-2.19	-1.20	
3,337.00	18.63	56.44	3,176.58	495.01	781.80	925.26	2.17	1.25	5.70	
3,429.00	20.30	60.74	3,263.33	510.93	807.97	955.90	2.39	1.82	4.67	
3,520.00	20.87	63.03	3,348.52	526.00	836.19	987.83	1.08	0.63	2.52	
3,611.00	22.54	62.59	3,433.06	541.38	866.12	1,021.38	1.84	1.84	-0.48	
3,703.00	21.18	62.50	3,518.45	557.18	896.52	1,055.55	1.48	-1.48	-0.10	
3,794.00	21.97	58.55	3,603.07	573.65	925.63	1,088.97	1.82	0.87	-4.34	
3,886.00	20.34	56.61	3,688.87	591.43	953.66	1,122.16	1.93	-1.77	-2.11	
3,977.00	23.24	55.56	3,773.36	610.29	981.68	1,155.91	3.22	3.19	-1.15	
4,069.00	20.52	54.07	3,858.73	630.02	1,009.71	1,190.12	3.02	-2.96	-1.62	
4,161.00	18.06	53.54	3,945.56	647.96	1,034.24	1,220.42	2.68	-2.67	-0.58	
4,252.00	20.08	58.72	4,031.56	664.46	1,058.94	1,250.10	2.89	2.22	5.69	
4,344.00	21.40	63.03	4,117.60	680.27	1,087.40	1,282.62	2.19	1.43	4.68	
4,435.00	19.24	62.85	4,202.94	694.64	1,115.54	1,314.12	2.37	-2.37	-0.20	
4,526.00	20.25	57.76	4,288.59	709.89	1,142.20	1,344.82	2.19	1.11	-5.59	
4,618.00	22.36	58.28	4,374.30	727.58	1,170.56	1,378.24	2.30	2.29	0.57	
4,710.00	21.40	56.70	4,459.67	746.00	1,199.47	1,412.52	1.22	-1.04	-1.72	
4,801.00	19.24	55.65	4,545.00	763.58	1,225.73	1,444.10	2.41	-2.37	-1.15	
4,893.00	21.44	60.92	4,631.27	780.31	1,252.95	1,476.04	3.11	2.39	5.73	
4,984.00	20.21	60.31	4,716.32	796.18	1,281.14	1,508.37	1.37	-1.35	-0.67	
5,076.00	18.14	60.39	4,803.21	811.13	1,307.40	1,538.57	2.25	-2.25	0.09	
5,168.00	20.17	54.94	4,890.12	827.32	1,332.84	1,568.72	2.94	2.21	-5.92	

<b>Company:</b>	Terra Energy Partners, LLP	<b>Local Co-ordinate Reference:</b>	Well RG 13-18-297 - Slot RG 13-18-297 B5
<b>Project:</b>	Garfield County, CO (Nad 83)	<b>TVD Reference:</b>	RKB @ 30' @ 6697.00ft
<b>Site:</b>	Fed 298-13-1 Pad	<b>MD Reference:</b>	RKB @ 30' @ 6697.00ft
<b>Well:</b>	RG 13-18-297	<b>North Reference:</b>	True
<b>Wellbore:</b>	OWB	<b>Survey Calculation Method:</b>	Minimum Curvature
<b>Design:</b>	Surveys	<b>Database:</b>	NN

Survey										
Measured Depth (ft)	Inclination (°)	Azimuth (°)	Vertical Depth (ft)	+N/-S (ft)	+E/-W (ft)	Vertical Section (ft)	Dogleg Rate (°/100usft)	Build Rate (°/100usft)	Turn Rate (°/100usft)	
5,260.00	22.67	58.55	4,975.77	845.68	1,360.95	1,602.29	3.07	2.72	3.92	
5,351.00	22.41	57.76	5,059.81	864.08	1,390.58	1,637.17	0.44	-0.29	-0.87	
5,442.00	20.74	57.14	5,144.44	882.08	1,418.79	1,670.62	1.85	-1.84	-0.68	
5,534.00	17.88	54.86	5,231.25	899.05	1,444.03	1,701.01	3.21	-3.11	-2.48	
5,625.00	19.55	59.43	5,317.44	914.84	1,468.56	1,730.18	2.44	1.84	5.02	
5,716.00	18.63	60.74	5,403.44	929.69	1,494.36	1,759.93	1.12	-1.01	1.44	
5,808.00	19.86	58.72	5,490.30	944.99	1,520.53	1,790.24	1.52	1.34	-2.20	
5,900.00	22.01	60.39	5,576.22	961.62	1,548.88	1,823.10	2.43	2.34	1.82	
5,992.00	20.03	58.99	5,662.09	978.26	1,577.37	1,856.09	2.22	-2.15	-1.52	
6,083.00	20.25	62.85	5,747.53	993.47	1,604.75	1,887.37	1.48	0.24	4.24	
6,174.00	20.96	62.68	5,832.71	1,008.13	1,633.22	1,919.30	0.78	0.78	-0.19	
6,266.00	20.03	63.65	5,918.89	1,022.67	1,661.96	1,951.40	1.08	-1.01	1.05	
6,357.00	18.67	61.71	6,004.74	1,036.49	1,688.75	1,981.46	1.65	-1.49	-2.13	
6,449.00	18.50	63.12	6,091.95	1,050.07	1,714.74	2,010.71	0.52	-0.18	1.53	
6,541.00	22.23	60.83	6,178.18	1,065.16	1,742.96	2,042.65	4.15	4.05	-2.49	
6,633.00	20.87	60.22	6,263.75	1,081.78	1,772.38	2,076.42	1.50	-1.48	-0.66	
6,724.00	18.85	59.51	6,349.33	1,097.29	1,799.12	2,107.32	2.24	-2.22	-0.78	
6,816.00	20.43	56.53	6,435.98	1,113.69	1,825.33	2,138.23	2.03	1.72	-3.24	
6,908.00	19.64	55.03	6,522.41	1,131.41	1,851.39	2,169.72	1.02	-0.86	-1.63	
7,000.00	18.28	53.98	6,609.42	1,148.76	1,875.73	2,199.54	1.52	-1.48	-1.14	
7,091.00	18.76	50.73	6,695.71	1,166.41	1,898.60	2,228.27	1.25	0.53	-3.57	
7,182.00	17.71	50.37	6,782.14	1,184.50	1,920.59	2,256.48	1.16	-1.15	-0.40	
7,274.00	16.83	51.60	6,869.99	1,201.70	1,941.81	2,283.57	1.04	-0.96	1.34	
7,366.00	16.12	52.48	6,958.21	1,217.75	1,962.38	2,309.50	0.82	-0.77	0.96	
7,457.00	15.16	52.31	7,045.84	1,232.72	1,981.81	2,333.90	1.06	-1.05	-0.19	
7,548.00	13.88	52.04	7,133.93	1,246.71	1,999.83	2,356.58	1.41	-1.41	-0.30	
7,640.00	12.91	53.45	7,223.43	1,259.62	2,016.79	2,377.79	1.11	-1.05	1.53	
7,732.00	11.55	52.92	7,313.34	1,271.29	2,032.40	2,397.19	1.48	-1.48	-0.58	
7,823.00	10.94	53.27	7,402.59	1,281.95	2,046.58	2,414.86	0.67	-0.67	0.38	
7,914.00	9.97	53.80	7,492.08	1,291.77	2,059.86	2,431.32	1.07	-1.07	0.58	
8,006.00	9.18	54.33	7,582.80	1,300.75	2,072.25	2,446.58	0.86	-0.86	0.58	
8,096.00	8.34	54.33	7,671.75	1,308.74	2,083.39	2,460.25	0.93	-0.93	0.00	
8,187.00	7.29	53.80	7,761.90	1,316.00	2,093.41	2,472.59	1.16	-1.15	-0.58	
8,278.00	6.67	55.91	7,852.23	1,322.37	2,102.44	2,483.62	0.74	-0.68	2.32	
8,370.00	5.62	56.79	7,943.70	1,327.84	2,110.64	2,493.47	1.15	-1.14	0.96	
8,462.00	5.00	54.68	8,035.30	1,332.62	2,117.68	2,501.97	0.71	-0.67	-2.29	
8,553.00	4.17	57.05	8,126.01	1,336.71	2,123.69	2,509.23	0.94	-0.91	2.60	
8,645.00	3.64	59.16	8,217.80	1,340.03	2,129.00	2,515.50	0.60	-0.58	2.29	
8,737.00	3.12	57.76	8,309.64	1,342.86	2,133.63	2,520.92	0.57	-0.57	-1.52	
8,829.00	2.98	54.50	8,401.51	1,345.59	2,137.69	2,525.81	0.24	-0.15	-3.54	
8,921.00	2.63	57.23	8,493.39	1,348.12	2,141.42	2,530.31	0.41	-0.38	2.97	
9,012.00	2.06	64.17	8,584.32	1,349.96	2,144.64	2,534.02	0.70	-0.63	7.63	
9,105.00	1.58	64.61	8,677.27	1,351.24	2,147.31	2,536.96	0.52	-0.52	0.47	

<b>Company:</b>	Terra Energy Partners, LLP	<b>Local Co-ordinate Reference:</b>	Well RG 13-18-297 - Slot RG 13-18-297 B5
<b>Project:</b>	Garfield County, CO (Nad 83)	<b>TVD Reference:</b>	RKB @ 30' @ 6697.00ft
<b>Site:</b>	Fed 298-13-1 Pad	<b>MD Reference:</b>	RKB @ 30' @ 6697.00ft
<b>Well:</b>	RG 13-18-297	<b>North Reference:</b>	True
<b>Wellbore:</b>	OWB	<b>Survey Calculation Method:</b>	Minimum Curvature
<b>Design:</b>	Surveys	<b>Database:</b>	NN

Survey										
Measured Depth (ft)	Inclination (°)	Azimuth (°)	Vertical Depth (ft)	+N/-S (ft)	+E/-W (ft)	Vertical Section (ft)	Dogleg Rate (°/100usft)	Build Rate (°/100usft)	Turn Rate (°/100usft)	
9,197.00	1.09	77.09	8,769.25	1,351.98	2,149.30	2,539.05	0.62	-0.53	13.57	
9,288.00	0.35	99.07	8,860.24	1,352.13	2,150.42	2,540.08	0.85	-0.81	24.15	
9,380.00	0.13	164.46	8,952.24	1,351.98	2,150.73	2,540.26	0.35	-0.24	71.08	
9,471.00	0.17	240.92	9,043.24	1,351.82	2,150.64	2,540.10	0.21	0.04	84.02	
9,563.00	0.17	206.56	9,135.24	1,351.63	2,150.46	2,539.85	0.11	0.00	-37.35	
9,654.00	0.83	249.36	9,226.23	1,351.28	2,149.78	2,539.09	0.79	0.73	47.03	
9,745.00	1.05	237.49	9,317.22	1,350.60	2,148.46	2,537.61	0.32	0.24	-13.04	
9,836.00	1.31	232.22	9,408.20	1,349.51	2,146.94	2,535.74	0.31	0.29	-5.79	
9,927.00	1.66	237.76	9,499.17	1,348.17	2,145.00	2,533.39	0.42	0.38	6.09	
10,019.00	2.02	231.69	9,591.12	1,346.45	2,142.60	2,530.44	0.44	0.39	-6.60	
10,110.00	2.46	235.74	9,682.05	1,344.36	2,139.73	2,526.90	0.51	0.48	4.45	
10,205.00	3.07	248.30	9,776.94	1,342.27	2,135.68	2,522.36	0.90	0.64	13.22	
10,299.00	2.76	248.30	9,870.82	1,340.50	2,131.24	2,517.65	0.33	-0.33	0.00	
10,393.00	1.66	279.07	9,964.75	1,339.88	2,127.79	2,514.39	1.68	-1.17	32.73	
10,487.00	2.37	262.45	10,058.70	1,339.84	2,124.52	2,511.58	0.97	0.76	-17.68	
10,581.00	3.42	255.34	10,152.57	1,338.88	2,119.88	2,507.12	1.18	1.12	-7.56	
10,675.00	3.29	258.32	10,246.41	1,337.62	2,114.52	2,501.91	0.23	-0.14	3.17	
10,769.00	3.03	250.94	10,340.27	1,336.26	2,109.53	2,496.95	0.51	-0.28	-7.85	
10,863.00	3.69	249.36	10,434.11	1,334.39	2,104.36	2,491.55	0.71	0.70	-1.68	
10,923.00	3.51	252.96	10,493.99	1,333.17	2,100.79	2,487.88	0.48	-0.30	6.00	
11,017.00	3.60	247.34	10,587.81	1,331.19	2,095.32	2,482.18	0.38	0.10	-5.98	
11,112.00	4.43	246.19	10,682.58	1,328.56	2,089.21	2,475.60	0.88	0.87	-1.21	
11,206.00	3.47	232.22	10,776.35	1,325.35	2,083.64	2,469.17	1.44	-1.02	-14.86	
11,301.00	3.55	244.00	10,871.18	1,322.30	2,078.72	2,463.39	0.76	0.08	12.40	
11,396.00	3.47	243.56	10,966.00	1,319.73	2,073.51	2,457.60	0.09	-0.08	-0.46	
11,490.00	3.73	250.85	11,059.81	1,317.46	2,068.07	2,451.78	0.56	0.28	7.76	
11,584.00	3.82	250.33	11,153.61	1,315.40	2,062.23	2,445.73	0.10	0.10	-0.55	
11,678.00	3.95	251.91	11,247.39	1,313.34	2,056.21	2,439.52	0.18	0.14	1.68	
11,773.00	3.47	255.86	11,342.19	1,311.62	2,050.31	2,433.60	0.57	-0.51	4.16	
11,875.00	3.47	255.86	11,444.01	1,310.12	2,044.32	2,427.71	0.00	0.00	0.00	
<b>PTB @ 11875 MD/ 1144.01 TVD</b>										

Design Targets										
Target Name	Dip Angle (°)	Dip Dir. (°)	TVD (ft)	+N/-S (ft)	+E/-W (ft)	Northing (usft)	Easting (usft)	Latitude	Longitude	
RG 13-18-297 VP	0.00	0.00	8,087.00	1,293.39	2,100.07	1,756,105.240	2,205,675.610	39.875350	-108.330464	
- hit/miss target										
- survey misses target center by 46.63ft at 8510.61ft MD (8083.74 TVD, 1334.93 N, 2121.00 E)										
- Circle (radius 75.00)										
RG 13-18-297 BHL	0.00	0.00	11,867.00	1,293.39	2,100.07	1,756,105.240	2,205,675.610	39.875350	-108.330464	
- survey misses target center by 426.98ft at 11875.00ft MD (11444.01 TVD, 1310.12 N, 2044.32 E)										
- Point										

<b>Company:</b>	Terra Energy Partners, LLP	<b>Local Co-ordinate Reference:</b>	Well RG 13-18-297 - Slot RG 13-18-297 B5
<b>Project:</b>	Garfield County, CO (Nad 83)	<b>TVD Reference:</b>	RKB @ 30' @ 6697.00ft
<b>Site:</b>	Fed 298-13-1 Pad	<b>MD Reference:</b>	RKB @ 30' @ 6697.00ft
<b>Well:</b>	RG 13-18-297	<b>North Reference:</b>	True
<b>Wellbore:</b>	OWB	<b>Survey Calculation Method:</b>	Minimum Curvature
<b>Design:</b>	Surveys	<b>Database:</b>	NN

Survey Annotations				
Measured Depth (ft)	Vertical Depth (ft)	Local Coordinates		Comment
		+N/-S (ft)	+E/-W (ft)	
390.00	389.81	8.27	6.38	First Survey @ 390 MD/ 389.81 TVD
11,875.00	11,444.01	1,310.12	2,044.32	PTB @ 11875 MD/ 1144.01 TVD

Checked By: \_\_\_\_\_ Approved By: \_\_\_\_\_ Date: \_\_\_\_\_