



Terra Energy Partners, LLC

SURFACE POST JOB REPORT

FED RG 13-18-297 05-103-12579
S:13 T:2S R:98W Rio Blanco CO

CallSheet #: 90557
Proposal #: 74566



SURFACE Post Job Report

Attention: Mr. Dustin Childers | (936) 524-8828 | dchilders@terraep.com
Terra Energy Partners, LLC
4828 Loop Central Dr., Suite 900 | Houston, TX 77081

Dear Mr. Dustin Childers,

Thank you for the opportunity to provide cementing services on this well. American Cementing strives to achieve complete customer satisfaction. If you have any questions regarding the services or data provided, please contact American Cementing at any time.

Sincerely,

Addison Kneale

Lab Technician II | (904) 228-9560 | addison.kneale@americacementing.com

Field Office 28730 US-6, Rifle, CO 81650
Phone: (970) 657-1187

Job Details & Summary

Geometry

Type	Function	OD (in)	ID (in)	Weight (lb/ft)	Thread	Top (ft)	Bottom (ft)	Excess (%)
Casing	Outer	20	19.5	53	n/a	0	80	0
Open Hole	Outer	n/a	17.5	n/a	n/a	80	1357	5
Casing	Inner	13.375	12.615	54.5	n/a	0	1357	0

Equipment / People

Unit Type	Unit	Power Unit	Employee #1
Field Storage Silo	FSS-438		
Cement Trailer Float	CTF-522	TRC-769	Jacob Kirchenwitz
Cement Pump Float	CPF-012	TRH-1137	Eric Brown
Light Duty Vehicles	LDV-146		Stephen Lancaster

Timing

Event	Date/Time
ERTS	03/08/2024 23:30
Call Out	3/8/2024 14:30
Depart Facility	3/8/2024 21:30
On Location	3/8/2024 23:30
Rig Up Iron	3/9/2024 01:30
Job Started	3/9/2024 02:09
Job Completed	3/9/2024 08:35
Rig Down Iron	3/9/2024 08:45
Depart Location	3/9/2024 10:30

General Job Information

Metrics	Value
Well Fluid Density	9 lb/gal
Well Fluid Type	WBM
Rig Circulation Vol	500 bbls
Rig Circulation Time	1 hours
Calculated Displacement	207 bbls
Actual Displacement	207 bbls
Total Spacer to Surface	20 bbls
Total CMT to Surface	57 bbls
Well Topped Out	No
Top Out Volume	N/A bbls

Job Details

Metrics	Value
Well Full Prior to Job	Yes
Well Fluid Density Into Well	9 lb/gal
Well Fluid Density Out of Well	9 lb/gal

Job Details (cont.)

Metrics	Value
BHCT	84 °F
BHST	102 °F

Water Analysis

Metrics	Value	Recommended
Water Source	None	
Temperature	64 °F	50-80 °F
pH Level	7	5.5-8.5
Chlorides	0 mg/L	0-3000 mg/L
Total Alkalinity	180	0-1000
Total Hardness	300 mg/L	0-500 mg/L
Carbonates	0 mg/L	0-100 mg/L
Sulfates	200 mg/L	0-1500 mg/L
Potassium	0 mg/L	0-3000 mg/L
Iron	0 mg/L	0-300 mg/L

Circulation

Lost Circulation Experienced
No

Job Execution Information

Fluid	Product	Function	Density (lb/gal)	Yield (ft ³ /sk)	Water Rq. (gal/sk)	Water Rq. (gal/bbl)	Volume (sks)	Volume (bbl)	Designed Top (ft)
1	Water	Flush	8.34			42.00		20.00	0
2	Lead	Lead	12.30	2.31	13.16		458.00	188.34	0
3	Water	DisplacementFinal	8.34			42.00		207.00	0

Job Fluid Details

Fluid	Type	Fluid	Product	Function	Conc.	Uom
2	Lead	Lead	ASTM TYPE IL	Cement	100.00	%
2	Lead	Lead	A-10	Accelerator	5.00	%BWOB
2	Lead	Lead	A-2	Accelerator	3.00	lb/sk
2	Lead	Lead	A-7P	Accelerator	2.00	lb/sk
2	Lead	Lead	IntegraSeal POLI	LostCirculation	0.25	lb/sk
2	Lead	Lead	STATIC FREE	Other	0.01	lb/sk
2	Lead	Lead	XCem-308	Defoamer	0.30	%BWOB

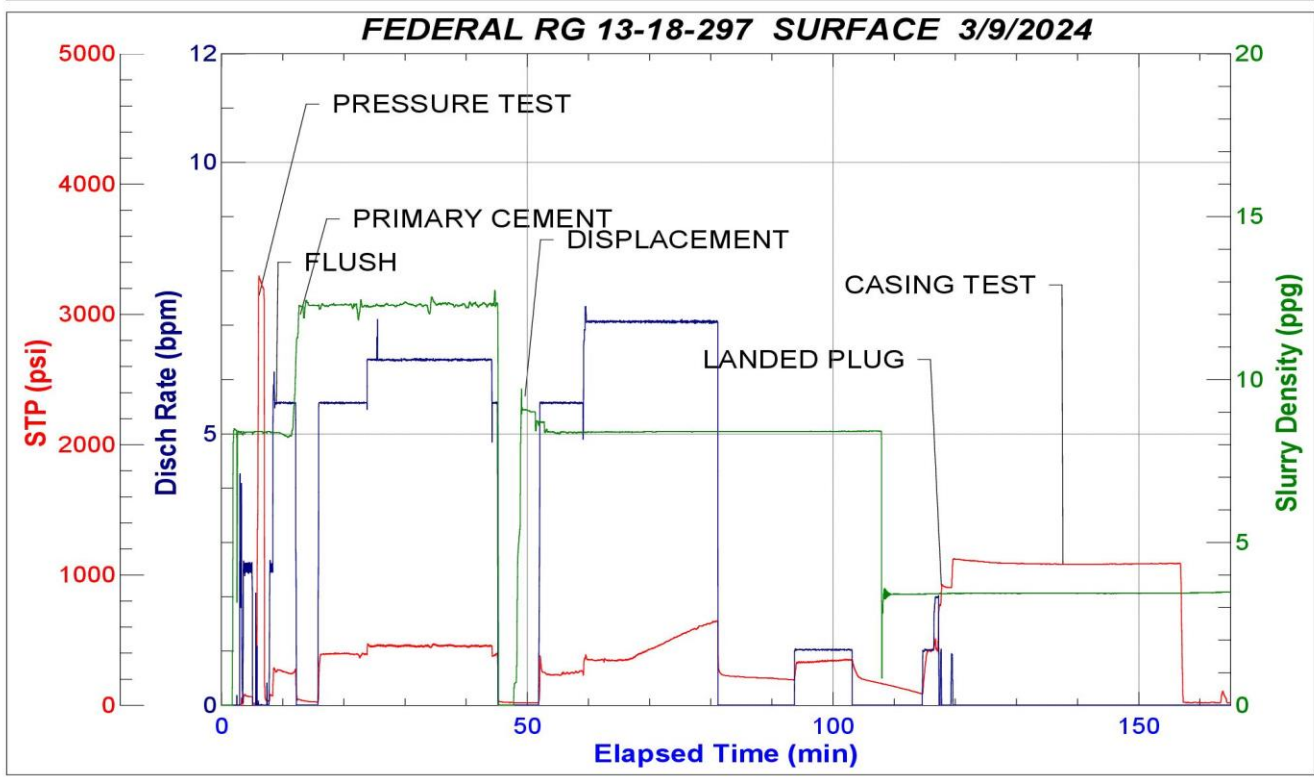
Job Logs

Line	Event	Date (MM/DD/YY)	Time (HH:MM)	Density (lb/gal)	Pump Rate (bpm)	Pump Volume (bbls)	Pipe Pressure (psi)	Comment
1		12/30/1899	00:00					ARRIVED ON LOCATION 11:30
2		12/30/1899	00:00					
3		12/30/1899	00:00					
4	Rig Up Iron	12/30/1899	00:00					
5		12/30/1899	00:00					
6		12/30/1899	00:00					
7		12/30/1899	00:00	8.34	2	5	69	FILL LINES
8		12/30/1899	00:00	8.34	1	1	3000	PRESSURE TEST LINES 3000PSI
9		12/30/1899	00:00	8.34	5	20	320	START 20 BBL FRESH WATER SPACER
10	SHUT DOWN DUE TO PUMP ISSUES	12/30/1899	00:00					PUMP WAS UNABLE TO READ DENSITY. DROVE BACK TO RIFLE AND GRABBED A DIFFERENT ONE
11	SWAPPED OUT PUMPS	12/30/1899	00:00					
12	Fill Lines	12/30/1899	00:00	8.34	2	5	220	
13	Pressure Test Lines	12/30/1899	00:00	8.34	1	1	3000	
14	FRESH WATER DISPLACEMENT	12/30/1899	00:00	8.34	5	20	418	START OF FRESH WATER SPACER
15		12/30/1899	00:00	12.3	4	5	410	START 188.4 PRIMARY SLURRY @ 12.3 (2.31,13.16) 458 TOTAL SACKS
15		12/30/1899	00:00	12.3	5	50	482	50 BBLS PUMPED
15		12/30/1899	00:00	12.3	6.4	100	510	100 BBLS PUMPED
15		12/30/1899	00:00	12.3	6.4	150	506	150 BBLS PUMPED
15		12/30/1899	00:00	12.3	5.5	184	404	184 BBLS PUMPED SHUTDOWN
16		12/30/1899	00:00	8.34	4	1	258	DROP TOP PLUG
17		12/30/1899	00:00	8.34	5.5	5	258	START 207.3 BBL FRESH WATER DISPLACEMENT
17		12/30/1899	00:00	8.34	7	50	388	CAUGHT CEMENT @ 29 BBLS GONE ON DISPLACEMENT
17		12/30/1899	00:00	8.34	7	100	419	100 BBLS PUMPED
17		12/30/1899	00:00	8.34	7	150	605	CEMENT TO SURFACE @ 150 BBLS GONE ON DISPLACEMENT/ CIRCULATED 57 BBLS CEMENT TO SURFACE
17		12/30/1899	00:00	8.34	7	191	621	SHUTDOWN/ 10 MINUTE HESITATION
17		12/30/1899	00:00	8.34	1	201	364	START DISPLACEMENT 2 BPM LAST 10 BBLS, STOPPED @ 7:42
17	SHUT DOWN FOR 10 MINS	12/30/1899	00:00	8.34	1	201	434	10 MINUTE SHUT DOWN
17		12/30/1899	00:00	8.34	2	204	446	FINAL LIFT PRESSURE TO LAND PLUG - 446
17		12/30/1899	00:00	8.34	2	207	912	LAND PLUG - 912 FINAL BUMP PRESSURE
18		12/30/1899	00:00	8.34	1	208	1126	START CASING TEST 1100 PSI/ 35 MINUTES
18		12/30/1899	00:00	8.34				END CASING TEST BEGINNING PRESSURE -1126/ ENDING PRESSURE -/ RETURNED 1 BBL UPON FLOAT CHECK
19		12/30/1899	00:00					POST JOB SAFETY MEETING
19		12/30/1899	00:00					
20		12/30/1899	00:00					
21		12/30/1899	00:00					END JOB

Pump Diagrams



JobMaster Program Version 5.01C1
Job Number: 90557
Customer: TERRA
Well Name: FEDERAL RG 13-18-297



Job Start: Saturday, March 09, 2024