



---

# **Terra Energy Partners, LLC**

## **INTERMEDIATE POST JOB REPORT**

**FED RG 13-18-297 05-103-12579**  
**S:13 T:2S R:98W Rio Blanco CO**

CallSheet #: 91108  
Proposal #: 75751



**INTERMEDIATE Post Job Report**

**Attention:** Mr. Dustin Childers | (936) 524-8828 | dchilders@terraep.com  
Terra Energy Partners, LLC  
4828 Loop Central Dr., Suite 900 | Houston, TX 77081

---

Dear Mr. Dustin Childers,

Thank you for the opportunity to provide cementing services on this well. American Cementing strives to achieve complete customer satisfaction. If you have any questions regarding the services or data provided, please contact American Cementing at any time.

Sincerely,

**Krystal Schell**

Field Engineer I | (719) 992-1830 | krystal.schell@americacementing.com

**Field Office**      28730 US-6, Rifle, CO 81650  
Phone: (970) 657-1187

## Job Details & Summary

### Geometry

Type	Function	OD (in)	ID (in)	Weight (lb/ft)	Thread	Top (ft)	Bottom (ft)	Excess (%)
Casing	Outer	13.375	12.615	54.5	n/a	0	1378	0
Open Hole	Outer	n/a	12.25	n/a	n/a	1357	2617	50
Open Hole	Outer	n/a	12.25	n/a	n/a	2617	3160	50
Casing	Inner	9.625	8.921	36	n/a	0	3160	0

### Equipment / People

Unit Type	Unit	Power Unit	Employee #1
Cement Trailer Float	CTF-286	TRC-249	Steven Richey
Light Duty Vehicles	LDV-157		Francisco Castillo
Cement Pump Float	CPF-058	TRH-1522	Jeremy Bradbrook

### Timing

Event	Date/Time
ERTS	04/15/2024 02:00
Call Out	4/14/2024 22:00
Depart Facility	4/14/2024 23:11
On Location	4/15/2024 00:15
Rig Up Iron	4/15/2024 00:30
Job Started	4/15/2024 08:31
Job Completed	4/15/2024 09:26
Rig Down Iron	4/15/2024 09:35
Depart Location	4/15/2024 10:30

### General Job Information

Metrics	Value
Well Fluid Density	9.2 lb/gal
Well Fluid Type	WBM
Rig Circulation Vol	300 bbls
Rig Circulation Time	0.5 hours
Calculated Displacement	240 bbls
Actual Displacement	240 bbls
Total Spacer to Surface	0 bbls
Total CMT to Surface	0 bbls
Well Topped Out	No

### Job Details

Metrics	Value
Flare Prior to Job	No
Flare Prior to Job	0 units
Flare During Job	No
Flare During Job	0 units
Flare at End of Job	No
Flare at End of Job	0 units
Well Full Prior to Job	Yes
Well Fluid Density Into Well	9.2 lb/gal
Well Fluid Density Out of Well	9.2 lb/gal

### Job Details (cont.)

Metrics	Value
BHCT	87 °F
BHST	118 °F

### Water Analysis

Metrics	Value	Recommended
Water Source	Upright Rig Tank	
Temperature	55 °F	50-80 °F
pH Level	7	5.5-8.5
Chlorides	0 mg/L	0-3000 mg/L
Total Alkalinity	240	0-1000
Total Hardness	250 mg/L	0-500 mg/L
Carbonates	0 mg/L	0-100 mg/L
Sulfates	200 mg/L	0-1500 mg/L
Potassium	250 mg/L	0-3000 mg/L
Iron	0 mg/L	0-300 mg/L

## Circulation

Lost Circulation Experienced

No

## Job Execution Information

Fluid	Product	Function	Density (lb/gal)	Yield (ft <sup>3</sup> /sk)	Water Rq. (gal/sk)	Water Rq. (gal/bbl)	Volume (sks)	Volume (bbl)	Designed Top (ft)
1	Water	Flush	8.34			42.00		20.00	1878
2	Lead	Lead	12.30	2.31	13.16		102.00	41.95	2117
3	Tail	Tail	12.80	2.03	11.16		125.00	45.29	2617
4	Water	DisplacementFinal	8.34			42.00		240.00	0

## Job Fluid Details

Fluid	Type	Fluid	Product	Function	Conc.	Uom
2	Lead	Lead	ASTM TYPE IL	Cement	100.00	%
2	Lead	Lead	A-10	Accelerator	5.00	%BWOB
2	Lead	Lead	A-2	Accelerator	3.00	lb/sk
2	Lead	Lead	A-7P	Accelerator	2.00	lb/sk
2	Lead	Lead	IntegraSeal POLI	LostCirculation	0.25	lb/sk
2	Lead	Lead	STATIC FREE	Other	0.01	lb/sk
2	Lead	Lead	XCem-308	Defoamer	0.30	lb/sk
3	Tail	Tail	ASTM TYPE IL	Cement	100.00	%
3	Tail	Tail	A-10	Accelerator	5.00	%BWOB
3	Tail	Tail	A-2	Accelerator	2.00	lb/sk
3	Tail	Tail	A-7P	Accelerator	2.00	lb/sk
3	Tail	Tail	IntegraSeal POLI	LostCirculation	0.25	lb/sk
3	Tail	Tail	STATIC FREE	Other	0.01	lb/sk
3	Tail	Tail	XCem-308	Defoamer	0.30	lb/sk

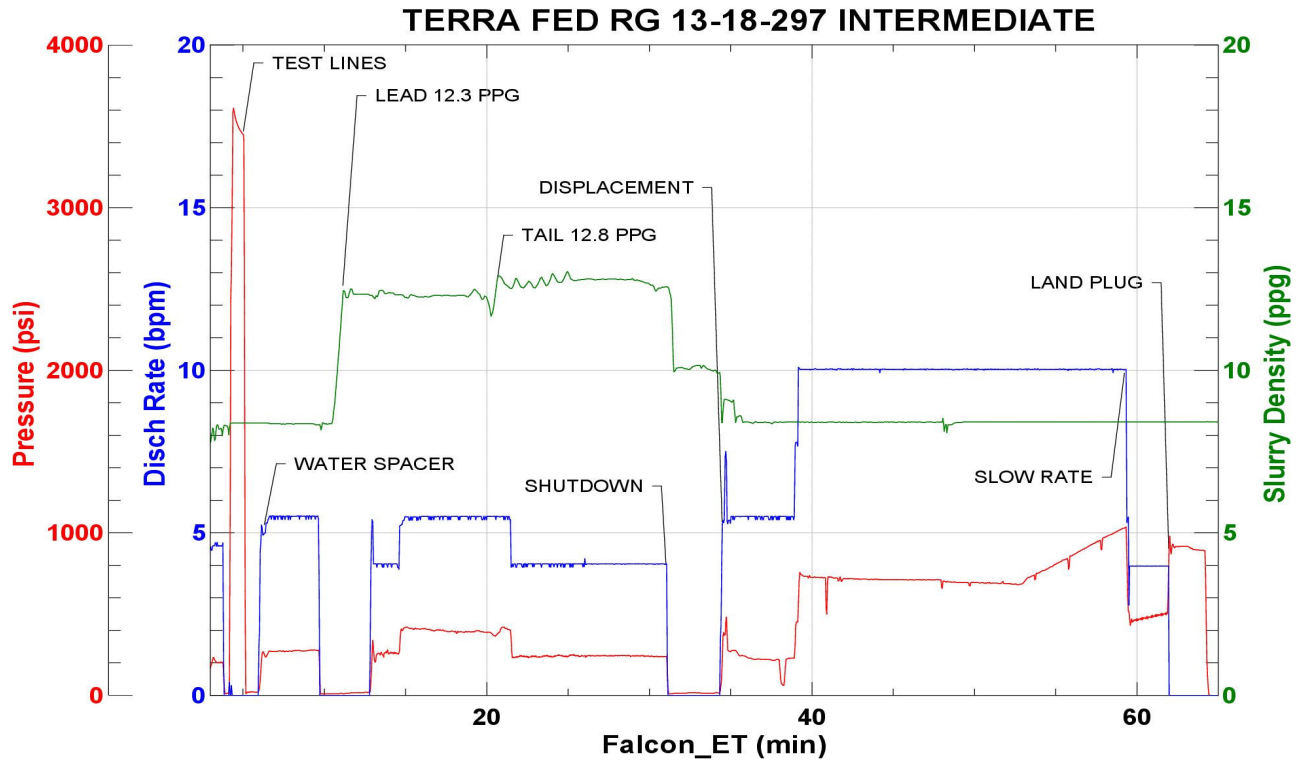
## Job Logs

Line	Event	Date (MM/DD/YY)	Time (HH:MM)	Density (lb/gal)	Pump Rate (bpm)	Pump Volume (bbls)	Pipe Pressure (psi)	Comment
1	CALLOUT	4/14/2024	22:00					ON LOCATION AT 02:00 HRS
2	LEAVE THE YARD	4/14/2024	23:11					CREW LEAVE THE YARD
3	ON LOCATION	4/15/2024	00:15					CREW ON LOCATION
4	RIG UP	4/15/2024	00:30					RIG UP MEETING, RIG UP
5	SAFETY MEETING	4/15/2024	08:00					PRE-JOB SAFETY MEETING
6	PRESSURE TEST	4/15/2024	08:28				3633	PRESSURE TEST LINES
7	WATER SPACER	4/15/2024	08:31	8.34	5.5	20	279	WATER SPACER
8	LEAD CEMENT	4/15/2024	08:37	12.3	5.5	42	391	LEAD 102 SKS/42 BBLS AT 12.3 PPG
9	TAIL CEMENT	4/15/2024	08:45	12.8	4	45	245	TAIL 125 SKS/45 BBLS AT 12.8 PPG
10	SHUTDOWN	4/15/2024	08:56					SHUTDOWN, DROP PLUG
11	DISPLACEMENT	4/15/2024	08:59	8.34	10	50	705	DISPLACEMENT WATER
12	DISPLACEMENT	4/15/2024	09:06	8.34	10	50	711	100 BBLS DISPLACEMENT PUMPED
13	DISPLACEMENT	4/15/2024	09:11	8.34	10	50	689	150 BBLS DISPLACEMENT PUMPED
14	DISPLACEMENT	4/15/2024	09:16	8.34	10	80	1011	230 BBLS DISPLACEMENT PUMPED
15	SLOW RATE	4/15/2024	09:25	8.34	4	10	493	SLOW RATE
16	LAND PLUG	4/15/2024	09:26				921	LAND PLUG, FULL RETURNS
17	CHECK FLOATS	4/15/2024	09:29					FLOATS HELD, 1 BBL FLOW BACK
18	RIG DOWN	4/15/2024	09:35					RIG DOWN MEETING, RIG DOWN
19	LEAVE LOCATION	4/15/2024	10:30					CREW LEAVE LOCATION

# Pump Diagrams



JobMaster Program Version 5.01C1  
 Job Number: 91108  
 Customer: TERRA  
 Well Name: FED RG 13-18



Job Start: Monday, April 15, 2024