



Terra Energy Partners, LLC

INTERMEDIATE POST JOB REPORT

FED RG 314-18-297 05-103-12574
S:13 T:2S R:98W Rio Blanco CO

CallSheet #: 90974
Proposal #: 75564



INTERMEDIATE Post Job Report

Attention: Mr. Dustin Childers | (936) 524-8828 | dchilders@terraep.com
Terra Energy Partners, LLC
4828 Loop Central Dr., Suite 900 | Houston, TX 77081

Dear Mr. Dustin Childers,

Thank you for the opportunity to provide cementing services on this well. American Cementing strives to achieve complete customer satisfaction. If you have any questions regarding the services or data provided, please contact American Cementing at any time.

Sincerely,

Addison Kneale

Field Engineer I | (904) 228-9560 | addison.kneale@americacementing.com

Field Office 28730 US-6, Rifle, CO 81650
Phone: (970) 657-1187

Job Details & Summary

Geometry

Type	Function	OD (in)	ID (in)	Weight (lb/ft)	Thread	Top (ft)	Bottom (ft)	Excess (%)
Casing	Outer	13.375	12.615	54.5	n/a	0	1377	0
Open Hole	Outer	n/a	12.25	n/a	n/a	1381	2587	50
Open Hole	Outer	n/a	12.25	n/a	n/a	2587	3117	50
Casing	Inner	9.625	8.921	36	n/a	0	3111.54	0

Equipment / People

Unit Type	Unit	Power Unit	Employee #1
Cement Trailer Float	CTF-242	TRC-112	Danny Ridgeway
Cement Pump Float	CPF-052	TRH-1140	Devin Burton
Light Duty Vehicles	LDV-157		Francisco Castillo
Light Duty Vehicles	LDV-128		Gerron McClure

Timing

Event	Date/Time
ERTS	04/08/2024 06:00
Call Out	4/8/2024 00:00
Depart Facility	4/8/2024 01:25
On Location	4/8/2024 03:00
Rig Up Iron	4/8/2024 03:15
Job Started	4/8/2024 10:25
Job Completed	4/8/2024 11:26
Rig Down Iron	4/8/2024 11:45
Depart Location	4/8/2024 12:30

General Job Information

Metrics	Value
Well Fluid Density	9 lb/gal
Well Fluid Type	WBM
Rig Circulation Vol	300 bbls
Rig Circulation Time	0.5 hours
Calculated Displacement	237 bbls
Actual Displacement	237 bbls
Total Spacer to Surface	0 bbls
Total CMT to Surface	0 bbls
Well Topped Out	No

Job Details

Metrics	Value
Well Full Prior to Job	Yes
Well Fluid Density Into Well	9 lb/gal
Well Fluid Density Out of Well	9 lb/gal

Job Details (cont.)

Metrics	Value
BHCT	87 °F
BHST	118 °F

Water Analysis

Metrics	Value	Recommended
Water Source	None	
Temperature	60 °F	50-80 °F
pH Level	7	5.5-8.5
Chlorides	0 mg/L	0-3000 mg/L
Total Alkalinity	240	0-1000
Total Hardness	250 mg/L	0-500 mg/L
Carbonates	0 mg/L	0-100 mg/L
Sulfates	200 mg/L	0-1500 mg/L
Potassium	250 mg/L	0-3000 mg/L
Iron	0 mg/L	0-300 mg/L

Circulation

Lost Circulation Experienced
No



Job Execution Information

Fluid	Product	Function	Density (lb/gal)	Yield (ft ³ /sk)	Water Rq. (gal/sk)	Water Rq. (gal/bbl)	Volume (sks)	Volume (bbl)	Designed Top (ft)
1	Water	Flush	8.34			42.00		20.00	1848
2	Lead	Lead	12.30	2.31	13.16		102.00	41.95	2087
3	Tail	Tail	12.80	2.03	11.16		125.00	45.29	2587
4	Water	DisplacementFinal	8.34			42.00		237.00	0

Job Fluid Details

Fluid	Type	Fluid	Product	Function	Conc.	Uom
2	Lead	Lead	ASTM TYPE IL	Cement	100.00	%
2	Lead	Lead	A-10	Accelerator	5.00	%BWOB
2	Lead	Lead	A-2	Accelerator	3.00	lb/sk
2	Lead	Lead	A-7P	Accelerator	2.00	lb/sk
2	Lead	Lead	IntegraSeal POLI	LostCirculation	0.25	lb/sk
2	Lead	Lead	STATIC FREE	Other	0.01	lb/sk
2	Lead	Lead	XCem-308	Defoamer	0.30	lb/sk
3	Tail	Tail	ASTM TYPE IL	Cement	100.00	%
3	Tail	Tail	A-10	Accelerator	5.00	%BWOB
3	Tail	Tail	A-2	Accelerator	2.00	lb/sk
3	Tail	Tail	A-7P	Accelerator	2.00	lb/sk
3	Tail	Tail	IntegraSeal POLI	LostCirculation	0.25	lb/sk
3	Tail	Tail	STATIC FREE	Other	0.01	lb/sk
3	Tail	Tail	XCem-308	Defoamer	0.30	lb/sk

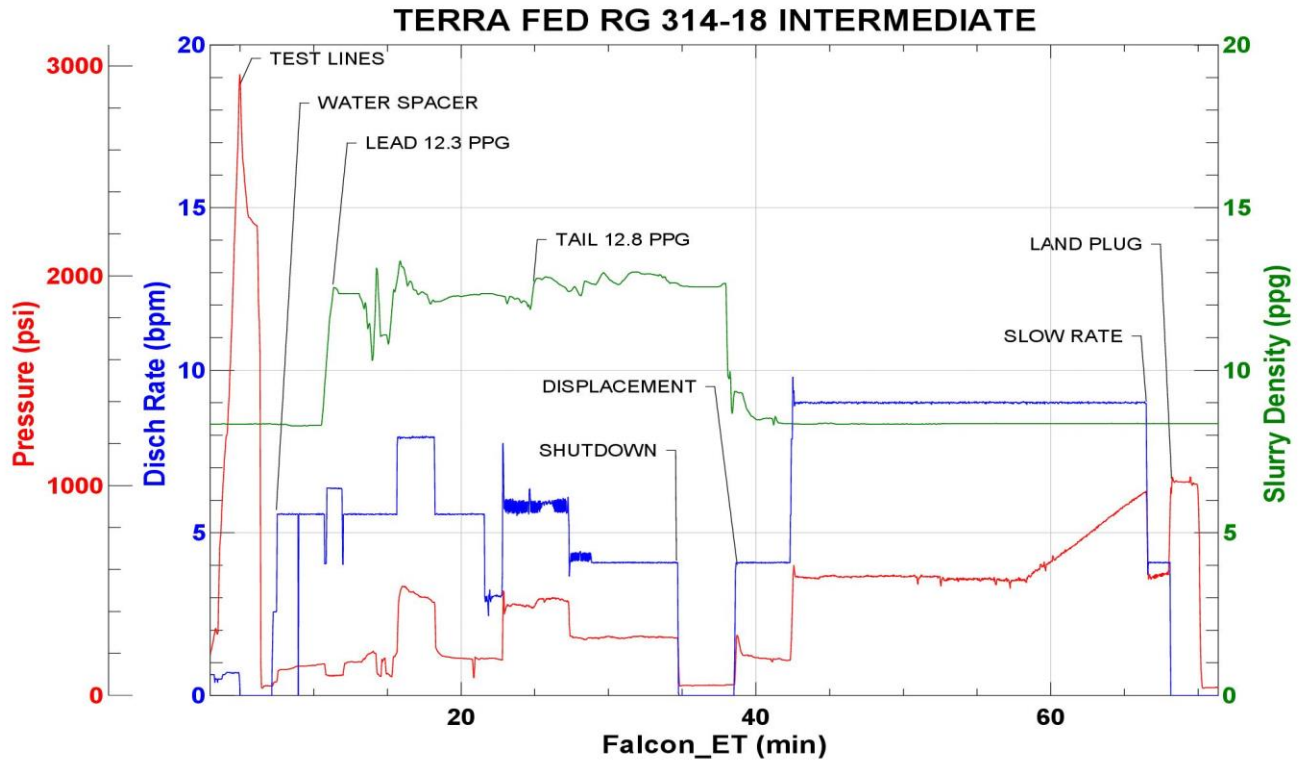
Job Logs

Line	Event	Date (MM/DD/YY)	Time (HH:MM)	Density (lb/gal)	Pump Rate (bpm)	Pump Volume (bbls)	Pipe Pressure (psi)	Comment
1	CALLOUT	4/8/2024	00:00					ON LOCATION AT 06:00 HRS
2	LEAVE THE YARD	4/8/2024	01:25					CREW LEAVE THE YARD
3	ON LOCATION	4/8/2024	03:00					CREW ON LOCATION
4	RIG UP	4/8/2024	03:15					RIG UP MEETING, RIG UP
5	SAFETY MEETING	4/8/2024	09:50					PRE-JOB SAFETY MEETING
6	PRESSURE TEST	4/8/2024	10:20				3003	PRESSURE TEST LINES
7	WATER SPACER	4/8/2024	10:25	8.34	5.5	20	141	WATER SPACER
8	LEAD CEMENT	4/8/2024	10:32	12.3	5.5	42	437	LEAD 102 SKS/42 BBLs AT 12.3 PPG, TOP OF LEAD 1,606'
9	TAIL CEMENT	4/8/2024	10:43	12.8	4	45	277	TAIL 125 SKS/45 BBLs AT 12.8 PPG, TOP OF TAIL 2,359'
10	SHUTDOWN	4/8/2024	10:53					SHUTDOWN, DROP PLUG
11	DISPLACEMENT	4/8/2024	10:57	8.34	9	50	561	DISPLACEMENT WATER
12	DISPLACEMENT	4/8/2024	11:05	8.34	9	50	569	100 BBLs DISPLACEMENT PUMPED
13	DISPLACEMENT	4/8/2024	11:10	8.34	9	50	549	150 BBLs DISPLACEMENT PUMPED
14	DISPLACEMENT	4/8/2024	11:16	8.34	9	77	971	227 BBLs DISPLACEMENT PUMPED
15	SLOW RATE	4/8/2024	11:24	8.34	4	10	567	SLOW RATE
16	LAND PLUG	4/8/2024	11:26				1023	LAND PLUG, FULL RETURNS
17	CHECK FLOATS	4/8/2024	11:29					FLOATS HELD, 1 BBL FLOW BACK
18	RIG DOWN	4/8/2024	11:45					RIG DOWN MEETING, RIG DOWN
19	LEAVE LOCATION	4/8/2024	12:30					CREW LEAVE LOCATION

Pump Diagrams



JobMaster Program Version 5.01C1
 Job Number: 90974
 Customer: TERRA
 Well Name: FED RG 314-18



Job Start: Monday, April 08, 2024