



# **Terra Energy Partners, LLC**

## **SURFACE POST JOB REPORT**

**FED RG 324-13-298 05-103-12567**  
**S:13 T:2S R:98W Rio Blanco CO**

CallSheet #: 90515  
Proposal #: 74562



**SURFACE Post Job Report**

**Attention:** Mr. Dustin Childers | (936) 524-8828 | dchilders@terraep.com  
Terra Energy Partners, LLC  
4828 Loop Central Dr., Suite 900 | Houston, TX 77081

---

Dear Mr. Dustin Childers,

Thank you for the opportunity to provide cementing services on this well. American Cementing strives to achieve complete customer satisfaction. If you have any questions regarding the services or data provided, please contact American Cementing at any time.

Sincerely,

**Addison Kneale**

Lab Technician II | (904) 228-9560 | addison.kneale@americacementing.com

**Field Office**      28730 US-6, Rifle, CO 81650  
Phone: (970) 657-1187

## Job Details & Summary

### Geometry

Type	Function	OD (in)	ID (in)	Weight (lb/ft)	Thread	Top (ft)	Bottom (ft)	Excess (%)
Casing	Outer	20	19.5	53	n/a	0	80	0
Open Hole	Outer	n/a	17.5	n/a	n/a	80	1363	5
Casing	Inner	13.375	12.615	54.5	n/a	0	1384	0

### Timing

Event	Date/Time
ERTS	03/10/2024 00:00
Call Out	3/10/2024 14:30
Depart Facility	3/10/2024 21:30
On Location	3/10/2024 23:30
Rig Up Iron	3/11/2024 01:15
Job Started	3/11/2024 01:31
Job Completed	3/11/2024 03:53
Rig Down Iron	3/11/2024 04:45
Depart Location	3/11/2024 06:15

### Equipment / People

Unit Type	Unit	Power Unit	Employee #1
Cement Trailer Float	CTF-007	TRC-054	Chuck Martin
Field Storage Silo	FSS-438		
Light Duty Vehicles	LDV-157		Eric Brown
Light Duty Vehicles	LDV-092		Collin Woronovitch
Cement Pump Float	CPF-052	TRH-855	

### General Job Information

Metrics	Value
Well Fluid Density	9 lb/gal
Well Fluid Type	WBM
Rig Circulation Vol	500 bbls
Rig Circulation Time	1 hours
Calculated Displacement	207 bbls
Actual Displacement	207 bbls
Total Spacer to Surface	20 bbls
Total CMT to Surface	122 bbls
Well Topped Out	No
Top Out Volume	N/A bbls

### Job Details

Metrics	Value
Well Full Prior to Job	Yes
Well Fluid Density Into Well	9 lb/gal
Well Fluid Density Out of Well	9 lb/gal

### Job Details (cont.)

Metrics	Value
BHCT	84 °F
BHST	102 °F

### Water Analysis

Metrics	Value	Recommended
Water Source	Upright Rig Tank	
Temperature	60 °F	50-80 °F
pH Level	7	5.5-8.5
Chlorides	80 mg/L	0-3000 mg/L
Total Alkalinity	120	0-1000
Total Hardness	100 mg/L	0-500 mg/L
Carbonates	N/A mg/L	0-100 mg/L
Sulfates	100 mg/L	0-1500 mg/L
Potassium	>200 mg/L	0-3000 mg/L
Iron	0 mg/L	0-300 mg/L



### Circulation

Lost Circulation Experienced
No

### Job Execution Information

Fluid	Product	Function	Density (lb/gal)	Yield (ft <sup>3</sup> /sk)	Water Rq. (gal/sk)	Water Rq. (gal/bbl)	Volume (sks)	Volume (bbl)	Designed Top (ft)
1	Water	Flush	8.34			42.00		20.00	0
2	Lead	Lead	12.30	2.31	13.16		460.00	189.17	0
3	Water	DisplacementFinal	8.34			42.00		207.00	0

### Job Fluid Details

Fluid	Type	Fluid	Product	Function	Conc.	Uom
2	Lead	Lead	ASTM TYPE IL	Cement	100.00	%
2	Lead	Lead	A-10	Accelerator	5.00	%BWOB
2	Lead	Lead	A-2	Accelerator	3.00	lb/sk
2	Lead	Lead	A-7P	Accelerator	2.00	lb/sk
2	Lead	Lead	IntegraSeal POLI	LostCirculation	0.25	lb/sk
2	Lead	Lead	STATIC FREE	Other	0.01	lb/sk
2	Lead	Lead	XCem-308	Defoamer	0.30	%BWOB

## Job Logs

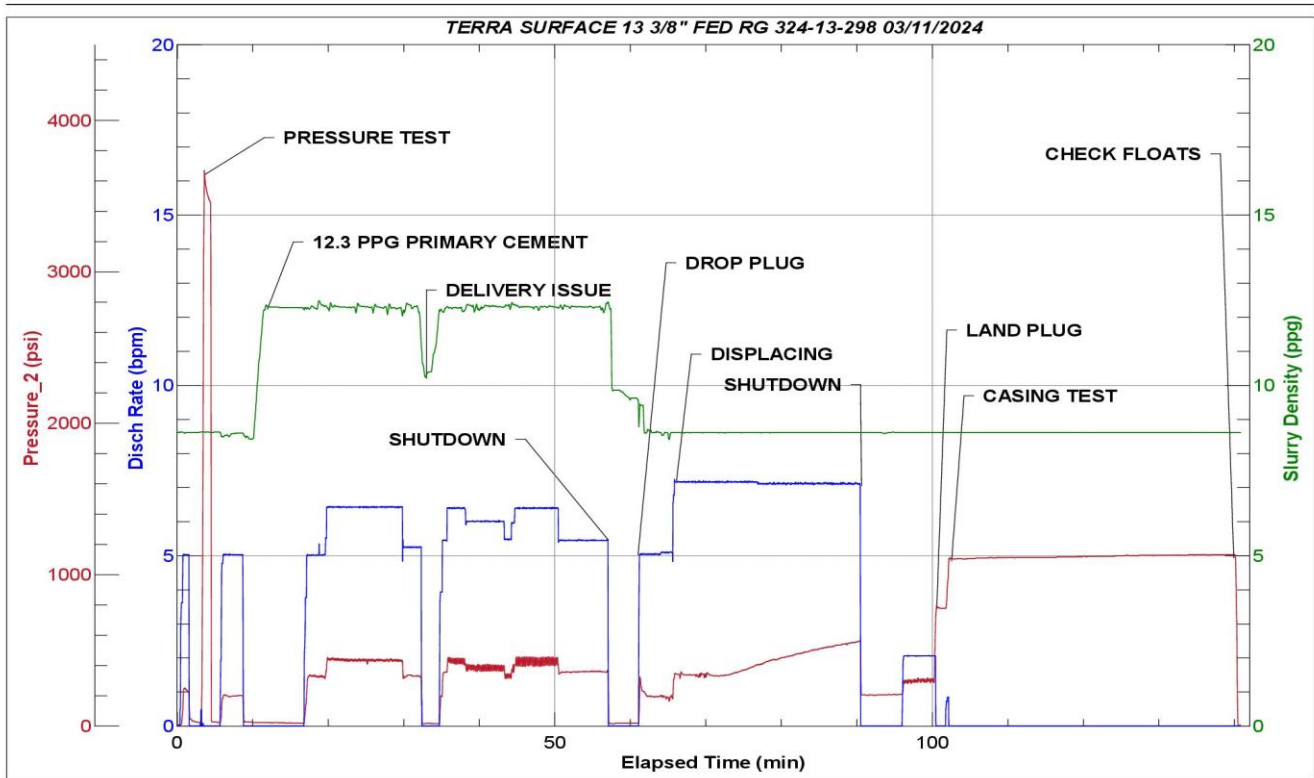
Line	Event	Date (MM/DD/YY)	Time (HH:MM)	Density (lb/gal)	Pump Rate (bpm)	Pump Volume (bbls)	Pipe Pressure (psi)	Comment
1	Arrive On Location	3/10/2024	23:30					ARRIVED ON LOCATION PER CUSTOMER REQUEST. RTS 23:30
2	Hazard assessment	3/10/2024	23:35					CREW ASSESSED WORK AREA FOR HAZARDS.
3	Spot equipment	3/10/2024	23:40					SPOTTED EQUIPMENT IN PLACE IT NEEDS TO BE FOR THE JOB
4	Prerig up safety meeting	3/10/2024	23:45					WENT OVER HOW WE WERE RIGGING UP WITH CREW
5	Rig Up Iron	3/11/2024	00:30					RIGGED UP IRON
6	Safety Meeting	3/11/2024	01:16					HAD PREJOB SAFETY MEETING WITH RIG CREW AND COMPANY MAN
7	Stab head	3/11/2024	01:29					RIGGED UP THE CEMENT HEAD TO CASING
8	Start Job	3/11/2024	01:31					START JOB
9	Fill Lines	3/11/2024	01:34	8.34	2	5	250	FILLED LINES WITH 5 BBLS OF FRESH WATER
10	Pressure Test Lines	3/11/2024	01:37	8.34	1	1	3600	PRESSURE TESTED LINES TO 3600 PSI
11	20 bbls fresh water spacer	3/11/2024	01:40	8.34	5	20	300	STARTED PUMPING 20 BBL FRESH WATER SPACER AT 8.34ppg
12	Pump Cement	3/11/2024	02:00	12.3	6	0	335	STARTED 189 BBL PRIMARY CEMENT AT (12.3#, 2.31y, 13.16mw) WEIGHT VERIFIED BY MUD SCALE
13	Pump Cement	3/11/2024	02:11	12.3	6	50	465	50 BBLS PRIMARY CEMENT PUMPED
14	Pump Cement	3/11/2024	02:19	12.3	6	50	480	100 BBLS PRIMARY CEMENT PUMPED
15	Pump Cement	3/11/2024	02:32	12.3	5	89	377	189 BBLS (460 SKS) TOTAL PRIMARY CEMENT PUMPED
16	Shutdown	3/11/2024	02:32					SHUTDOWN TO WASH UP AND PREPARE TO DROP PLUG
17	Drop Top Plug	3/11/2024	02:36					DROPPED PLUG WITNESSED BY COMPANY MAN
18	Pump Displacement	3/11/2024	02:36	8.34	5	0	200	START 207 BBL FRESH WATER DISPLACEMENT
19	Pump Displacement	3/11/2024	02:44	8.34	7	50	370	50 BBLS DISPLACED
20	Pump Displacement	3/11/2024	02:51	8.34	7	50	427	100 BBLS DISPLACED
21	Pump Displacement	3/11/2024	02:58	8.34	7	50	512	150 BBLS DISPLACED
22	Shutdown	3/11/2024	03:05	8.34	7	47	580	197 BBLS DISPLACED AND SHUTDOWN FOR 5 MINS TO ALLOW CEMENT TO FALL. MAX LIFT 580 PSI AT 7 BPM
23	Pump Displacement	3/11/2024	03:10	8.34	2	10	325	FINISH PUMPING DISPLACEMENT 207 BBLS (CALCULATED) DISPLACEMENT PUMED. 122 BBLS CEMENT TO SURFACE
24	Land Plug	3/11/2024	03:15	8.34			800	PLUG LANDED FCP-325 PSI BUMP-800 PSI
25	Test Casing	3/11/2024	03:18	8.34	2	1	1116	START 30 MIN 1100 PSI CASING TEST. STARTING PRESSURE 1116 PSI ENDING PRESSURE 1145 PSI
26	Check Floats	3/11/2024	03:53					BLEED PRESSURE OFF. FLOATS HELD 1 BBL BACK
27	Safety Meeting	3/11/2024	04:05					PRERIG DOWN SAFETY MEETING
28	Rig Down Iron	3/11/2024	04:45					RIG DOWN ALL HOSES AND IRON
29	Safety Meeting	3/11/2024	04:50					PRECONVOY SAFETY MEETING

Line	Event	Date (MM/DD/YY)	Time (HH:MM)	Density (lb/gal)	Pump Rate (bpm)	Pump Volume (bbls)	Pipe Pressure (psi)	Comment
30	Depart Location	3/11/2024	06:15					DEPART LOCATION FOR RCO YARD
31	End Job	3/11/2024	06:15					END JOB

## Pump Diagrams



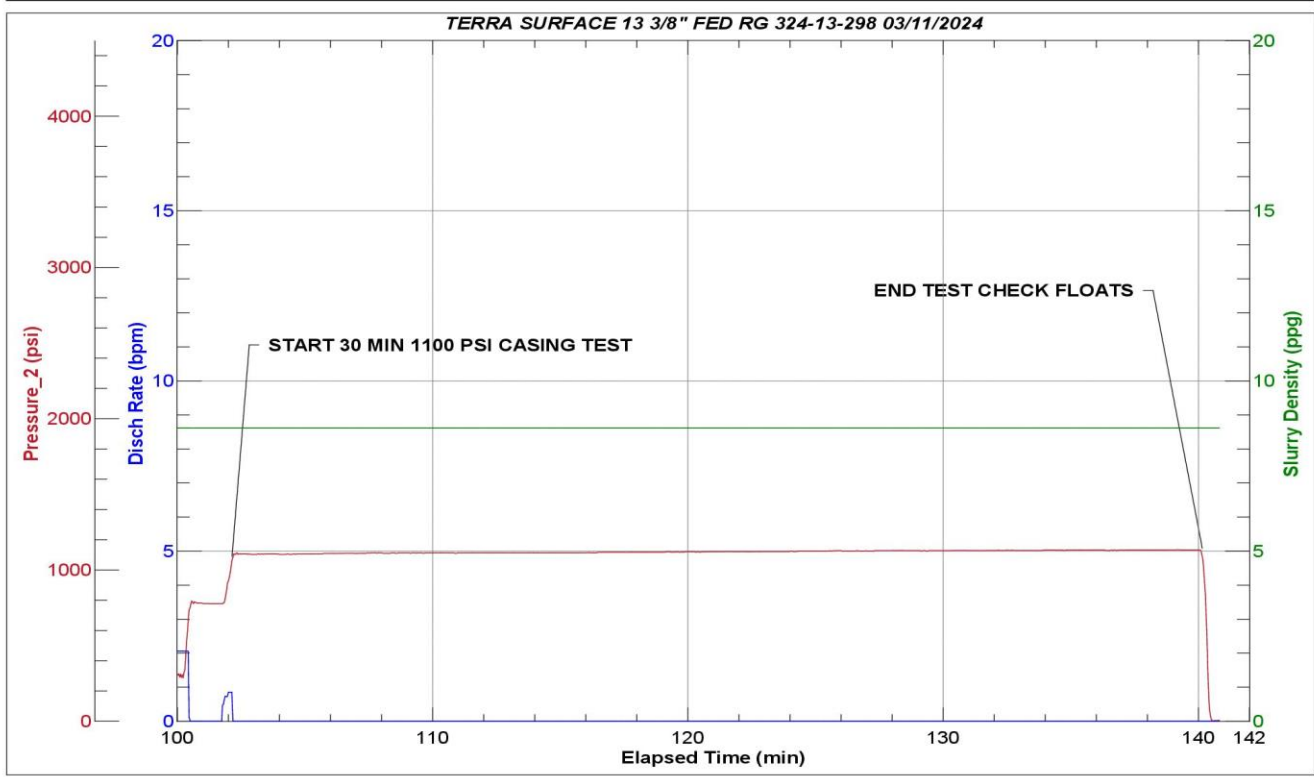
JobMaster Program Version 5.01C1  
Job Number: 90515  
Customer: TERRA  
Well Name: FED RG 324-13-298



Job Start: Monday, March 11, 2024



JobMaster Program Version 5.01C1  
Job Number: 90515  
Customer: TERRA  
Well Name: FED RG 324-13-298



Job Start: Monday, March 11, 2024