



Terra Energy Partners, LLC

LONG STRING POST JOB REPORT

FED RG 324-13-298 05-103-12567
S:13 T:2S R:98W Rio Blanco CO

CallSheet #: 90859
Proposal #: 75366



LONG STRING Post Job Report

Attention: Mr. Dustin Childers | (936) 524-8828 | dchilders@terraep.com
Terra Energy Partners, LLC
4828 Loop Central Dr., Suite 900 | Houston, TX 77081

Dear Mr. Dustin Childers,

Thank you for the opportunity to provide cementing services on this well. American Cementing strives to achieve complete customer satisfaction. If you have any questions regarding the services or data provided, please contact American Cementing at any time.

Sincerely,

Addison Kneale

Field Engineer I | (904) 228-9560 | addison.kneale@americacementing.com

Field Office 28730 US-6, Rifle, CO 81650
Phone: (970) 657-1187

Job Details & Summary

Geometry

Type	Function	OD (in)	ID (in)	Weight (lb/ft)	Thread	Top (ft)	Bottom (ft)	Excess (%)
Casing	Outer	9.625	8.921	36	n/a	0	3110	0
Open Hole	Outer	n/a	8.75	n/a	n/a	3110	7905	45
Open Hole	Outer	n/a	8.75	n/a	n/a	7905	11885	45
Casing	Inner	4.5	4	11.6	n/a	0	11885	0

Equipment / People

Unit Type	Unit	Power Unit	Employee #1
Cement Trailer Float	CTF-249	TRC-112	Danny Ridgeway
Field Storage Silo	FSS-438		
Field Storage Silo	FSS-470		
Cement Pump Float	CPF-052	TRH-1140	Devin Burton
Light Duty Vehicles	LDV-128		Gerron McClure

Timing

Event	Date/Time
ERTS	04/06/2024 15:00
Call Out	4/6/2024 06:30
Depart Facility	4/6/2024 09:00
On Location	4/6/2024 15:00
Rig Up Iron	4/6/2024 16:00
Job Started	4/6/2024 19:40
Job Completed	4/6/2024 22:10
Rig Down Iron	4/6/2024 23:15
Depart Location	4/6/2024 23:30

General Job Information

Metrics	Value
Well Fluid Density	10.5 lb/gal
Well Fluid Type	WBM
Rig Circulation Vol	1000 bbls
Rig Circulation Time	3 hours
Calculated Displacement	180.7 bbls
Actual Displacement	180 bbls
Total Spacer to Surface	N/A bbls
Total CMT to Surface	N/A bbls
Well Topped Out	No
Top Out Volume	N/A bbls

Job Details

Metrics	Value
Well Full Prior to Job	Yes
Well Fluid Density Into Well	10.5 lb/gal
Well Fluid Density Out of Well	10.5 lb/gal

Job Details (cont.)

Metrics	Value
BHCT	201 °F
BHST	265 °F

Water Analysis

Metrics	Value	Recommended
Water Source	None	
Temperature	68 °F	50-80 °F
pH Level	6	5.5-8.5
Chlorides	200 mg/L	0-3000 mg/L
Total Alkalinity	100	0-1000
Total Hardness	10 mg/L	0-500 mg/L
Carbonates	10 mg/L	0-100 mg/L
Sulfates	100 mg/L	0-1500 mg/L
Potassium	200 mg/L	0-3000 mg/L
Iron	10 mg/L	0-300 mg/L

Circulation

Lost Circulation Experienced
No

Job Execution Information

Fluid	Product	Function	Density (lb/gal)	Yield (ft ³ /sk)	Water Rq. (gal/sk)	Water Rq. (gal/bbl)	Volume (sks)	Volume (bbl)	Designed Top (ft)
1	Water	Flush	8.34			42.00		10.00	6220
2	Lead	Lead	12.70	2.13	11.42		725.00	274.81	6346
3	Tail	Tail	13.50	2.01	9.72		884.00	316.37	7905
4	Displacement	DisplacementFinal	8.34			42.00		180.70	0

Job Fluid Details

Fluid	Type	Fluid	Product	Function	Conc.	Uom
2	Lead	Lead	ASTM TYPE IL	Cement	100.00	%
2	Lead	Lead	A-2	Accelerator	0.10	%BWOB
2	Lead	Lead	FL-66	FluidLoss	0.20	%BWOB
2	Lead	Lead	GW-86	Viscosifier	0.10	%BWOB
2	Lead	Lead	IntegraSeal PHENO	LostCirculation	3.00	lb/sk
2	Lead	Lead	IntegraSeal POLI	LostCirculation	0.25	lb/sk
2	Lead	Lead	R-3	Retarder	0.60	%BWOB
2	Lead	Lead	STATIC FREE	Other	0.01	lb/sk
2	Lead	Lead	XCem-1009	Extender	10.00	lb/sk
2	Lead	Lead	XCem-308	Defoamer	0.30	%BWOB
3	Tail	Tail	CLASS G	Cement	70.00	%
3	Tail	Tail	FLY ASH (POZZOLAN)	Extender	30.00	%
3	Tail	Tail	BENTONITE	Viscosifier	8.00	%BWOB
3	Tail	Tail	FL-24	FluidLoss	0.40	%BWOB
3	Tail	Tail	IntegraSeal PHENO	LostCirculation	3.00	lb/sk
3	Tail	Tail	S-8	StrengthRetgression	26.00	%BWOB
3	Tail	Tail	XCem-308	Defoamer	0.30	%BWOB
3	Tail	Tail	XCem-916	Retarder	0.35	%BWOB

Job Logs

Line	Event	Date (MM/DD/YY)	Time (HH:MM)	Density (lb/gal)	Pump Rate (bpm)	Pump Volume (bbls)	Pipe Pressure (psi)	Comment
1	ARRIVED ON LOCATION	4/6/2024	15:00					ARRIVED ON LOCATION PER CUSTOMER REQUEST 15:00
2	HAZARD ASSESMENT	4/6/2024	15:05					
3	SPOT EQUIPMENT	4/6/2024	15:10					
4	PRE RIG UP SAFETY MEETING	4/6/2024	15:15					
5	RIGGED UP	4/6/2024	16:00					
6	PRE JOB SAFETY MEETING	4/6/2024	18:40					
7	STAB HEAD	4/6/2024	19:25					
8	START JOB	4/6/2024	19:40					START JOB
9	PRESSURE TEST LINES 5000PSI	4/6/2024	19:42	8.34	1	1	5000	PRESSURE TEST LINES 5000PSI
10	10 BBL FRESH WATER SPACER	4/6/2024	19:44	8.34	5	10	745	10 BBL FRESH WATER SPACER
11	START 274.8 BBL LEAD SLURRY@ 12.7	4/6/2024	19:56	12.7	5	1	732	START 274.8 BBL LEAD SLURRY @ 12.7 (2.13,11.42) 725 TOTAL SACKS
12	50 BBL GONE ON LEAD SLURRY	4/6/2024	20:00	12.7	6	50	623	
13	100 BBL GONE ON LEAD SLURRY	4/6/2024	20:08	12.7	6	100	541	
14	150 BBL GONE ON LEAD SLURRY	4/6/2024	20:14	12.7	6	150	460	
15	200 BBL GONE ON LEAD SLURRY	4/6/2024	20:22	12.7	6	200	489	
16	250 BBL GONE ON LEAD SLURRY	4/6/2024	20:30	12.7	6	250	498	
17	END OF LEAD SLURRY	4/6/2024	20:38	12.7	5	274.8	678	END OF LEAD SLURRY
18	START 316.4 BBL TAIL SLURRY @ 13.5	4/6/2024	20:38	13.5	5	1	680	START 316.4 BBL TAIL SLURRY@ 13.5 (2.01,9.72) 884 TOTAL SACKS
19	50 BBL GONE ON TAIL SLURRY	4/6/2024	20:47	13.5	6	50	724	
20	100 BBL GONE ON TAIL SLURRY	4/6/2024	20:54	13.5	6	100	723	
21	150 BBL GONE ON TAIL SLURRY	4/6/2024	21:03	13.5	6	150	730	
22	200 BBL GONE ON TAIL SLURRY	4/6/2024	21:12	13.5	6	200	730	
23	250 BBL GONE ON TAIL SLURRY	4/6/2024	21:20	13.5	6	250	708	
24	300 BBL GONE ON TAIL SLURRY	4/6/2024	21:28	13.5	6	300	724	
25	END OF TAIL SLURRY	4/6/2024	21:32	13.5	4	316.4	532	END OF TAIL SLURRY
26	SHUTDOWN/ WASH LINES/ DROP TOP PLUG	4/6/2024	21:32					SHUTDOWN/ WASH LINES/ DROP TOP PLUG
27	START 184 BBL FRESH WATER DISPLACEMENT	4/6/2024	21:44	8.34	5	1	153	START 184 BBL FRESH WATER DISPLACEMENT WITH KCL EXTRACT
28	50 BBL GONE ON DISPLACEMENT	4/6/2024	21:50	8.34	9	50	1411	
29	100 BBL GONE ON DISPLACEMENT	4/6/2024	21:56	8.34	9	100	1966	
30	150 BBL GONE ON DISPLACEMENT	4/6/2024	22:03	8.34	7	150	2232	

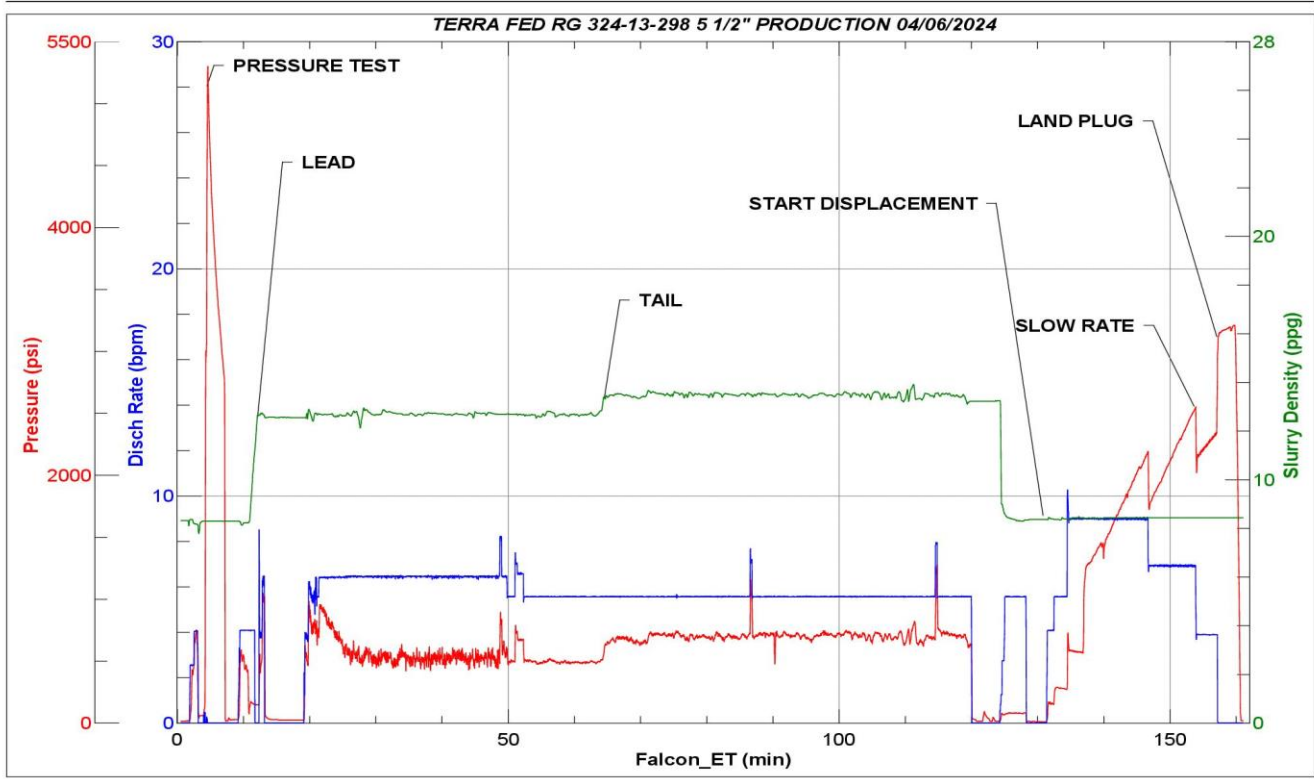


Line	Event	Date (MM/DD/YY)	Time (HH:MM)	Density (lb/gal)	Pump Rate (bpm)	Pump Volume (bbls)	Pipe Pressure (psi)	Comment
31	PRESSURE BEFORE SLOWING RATE	4/6/2024	22:07	8.34	7	170	2589	PRESSURE BEFORE SLOWING RATE- 2589
32	SLOW RATE PRESSURE	4/6/2024	22:07	8.34	4	170	2332	SLOW RATE PRESSURE @ 4BPM - 2332
33	PRESSURE BEFORE LANDING PLUG	4/6/2024	22:10	8.34	4	180.7	2389	FINAL LIFT PRESSURE TO LAND PLUG - 2389
34	LAND PLUG	4/6/2024	22:10	8.34	4	180.7	3149	LAND PLUG -3149
35	CHECK FLOAT	4/6/2024	22:13	8.34				RETURNED 2 BBLS BACK UPON FLOAT CHECK
36	END OF CEMENTING SERVICES	4/6/2024	22:13					END OF CEMENTING SERVICES
37	POST JOB/ PRE RIG DOWN SAFETY MEETING	4/6/2024	22:20					POST JOB SAFETY MEETING
38	RIGGED DOWN	4/6/2024	23:15					RIGGED DOWN
39	PRE CONVOY SAFETY MEETING	4/6/2024	23:25					
40	LOCATION DEPARTURE	4/6/2024	23:30					
41	END OF JOB	4/6/2024	23:30					END OF JOB

Pump Diagrams



JobMaster Program Version 5.01C1
Job Number: 90859
Customer: TERRA
Well Name: FED RG 324-13 298



Job Start: Saturday, April 06, 2024