



Terra Energy Partners, LLC

INTERMEDIATE POST JOB REPORT

FED RG 324-13-298 05-103-12567
S:13 T:2S R:98W Rio Blanco CO

CallSheet #: 90858
Proposal #: 75365



INTERMEDIATE Post Job Report

Attention: Mr. Dustin Childers | (936) 524-8828 | dchilders@terraep.com
Terra Energy Partners, LLC
4828 Loop Central Dr., Suite 900 | Houston, TX 77081

Dear Mr. Dustin Childers,

Thank you for the opportunity to provide cementing services on this well. American Cementing strives to achieve complete customer satisfaction. If you have any questions regarding the services or data provided, please contact American Cementing at any time.

Sincerely,

Krystal Schell

Field Engineer I | (719) 992-1830 | krystal.schell@americacementing.com

Field Office 28730 US-6, Rifle, CO 81650
Phone: (970) 657-1187

Job Details & Summary

Geometry

Type	Function	OD (in)	ID (in)	Weight (lb/ft)	Thread	Top (ft)	Bottom (ft)	Excess (%)
Casing	Outer	13.375	12.615	54.5	n/a	0	1380	0
Open Hole	Outer	n/a	12.25	n/a	n/a	1363	2610	50
Open Hole	Outer	n/a	12.25	n/a	n/a	2610	3162	50
Casing	Inner	9.625	8.921	36	n/a	0	3155.87	0

Equipment / People

Unit Type	Unit	Power Unit	Employee #1
Cement Trailer Float	CTF-385	TRC-769	Jacob Kirchenwitz
Light Duty Vehicles	LDV-128		Gerron McClure
Cement Pump Float	CPF-012	TRH-855	James Lujan

Timing

Event	Date/Time
ERTS	03/31/2024 14:00
Call Out	3/31/2024 10:00
Depart Facility	3/31/2024 11:00
On Location	3/31/2024 14:00
Rig Up Iron	3/31/2024 15:00
Job Started	3/31/2024 17:23
Job Completed	3/31/2024 18:21
Rig Down Iron	3/31/2024 19:20
Depart Location	3/31/2024 19:30

General Job Information

Metrics	Value
Well Fluid Density	9 lb/gal
Well Fluid Type	WBM
Rig Circulation Vol	437 bbls
Rig Circulation Time	1 hours
Calculated Displacement	240.1 bbls
Actual Displacement	240 bbls
Total Spacer to Surface	0 bbls
Total CMT to Surface	0 bbls
Well Topped Out	No
Top Out Volume	N/A bbls

Job Details

Metrics	Value
Flare Prior to Job	No
Flare Prior to Job	N/A units
Flare During Job	No
Flare During Job	N/A units
Flare at End of Job	No
Flare at End of Job	N/A units
Well Full Prior to Job	Yes
Well Fluid Density Into Well	9 lb/gal
Well Fluid Density Out of Well	9 lb/gal

Job Details (cont.)

Metrics	Value
BHCT	87 °F
BHST	118 °F

Water Analysis

Metrics	Value	Recommended
Water Source	Upright Rig Tank	
Temperature	65 °F	50-80 °F
pH Level	6	5.5-8.5
Chlorides	200 mg/L	0-3000 mg/L
Total Alkalinity	100	0-1000
Total Hardness	10 mg/L	0-500 mg/L
Carbonates	10 mg/L	0-100 mg/L
Sulfates	100 mg/L	0-1500 mg/L
Potassium	200 mg/L	0-3000 mg/L
Iron	10 mg/L	0-300 mg/L

Circulation

Lost Circulation Experienced

No

Job Execution Information

Fluid	Product	Function	Density (lb/gal)	Yield (ft ³ /sk)	Water Rq. (gal/sk)	Water Rq. (gal/bbl)	Volume (sks)	Volume (bbl)	Designed Top (ft)
1	Water	Flush	8.34			42.00		20.00	1871
2	Lead	Lead	12.30	2.31	13.16		102.00	41.95	2110
3	Tail	Tail	12.80	2.03	11.16		125.00	45.28	2610
4	Water	DisplacementFinal	8.34			42.00		240.10	0

Job Fluid Details

Fluid	Type	Fluid	Product	Function	Conc.	Uom
2	Lead	Lead	ASTM TYPE IL	Cement	100.00	%
2	Lead	Lead	A-10	Accelerator	5.00	%BWOB
2	Lead	Lead	A-2	Accelerator	3.00	lb/sk
2	Lead	Lead	A-7P	Accelerator	2.00	lb/sk
2	Lead	Lead	IntegraSeal POLI	LostCirculation	0.25	lb/sk
2	Lead	Lead	STATIC FREE	Other	0.01	lb/sk
2	Lead	Lead	XCem-308	Defoamer	0.30	%BWOB
3	Tail	Tail	ASTM TYPE IL	Cement	100.00	%
3	Tail	Tail	A-10	Accelerator	5.00	%BWOB
3	Tail	Tail	A-2	Accelerator	2.00	lb/sk
3	Tail	Tail	A-7P	Accelerator	2.00	lb/sk
3	Tail	Tail	IntegraSeal POLI	LostCirculation	0.25	lb/sk
3	Tail	Tail	STATIC FREE	Other	0.01	lb/sk
3	Tail	Tail	XCem-308	Defoamer	0.30	%BWOB

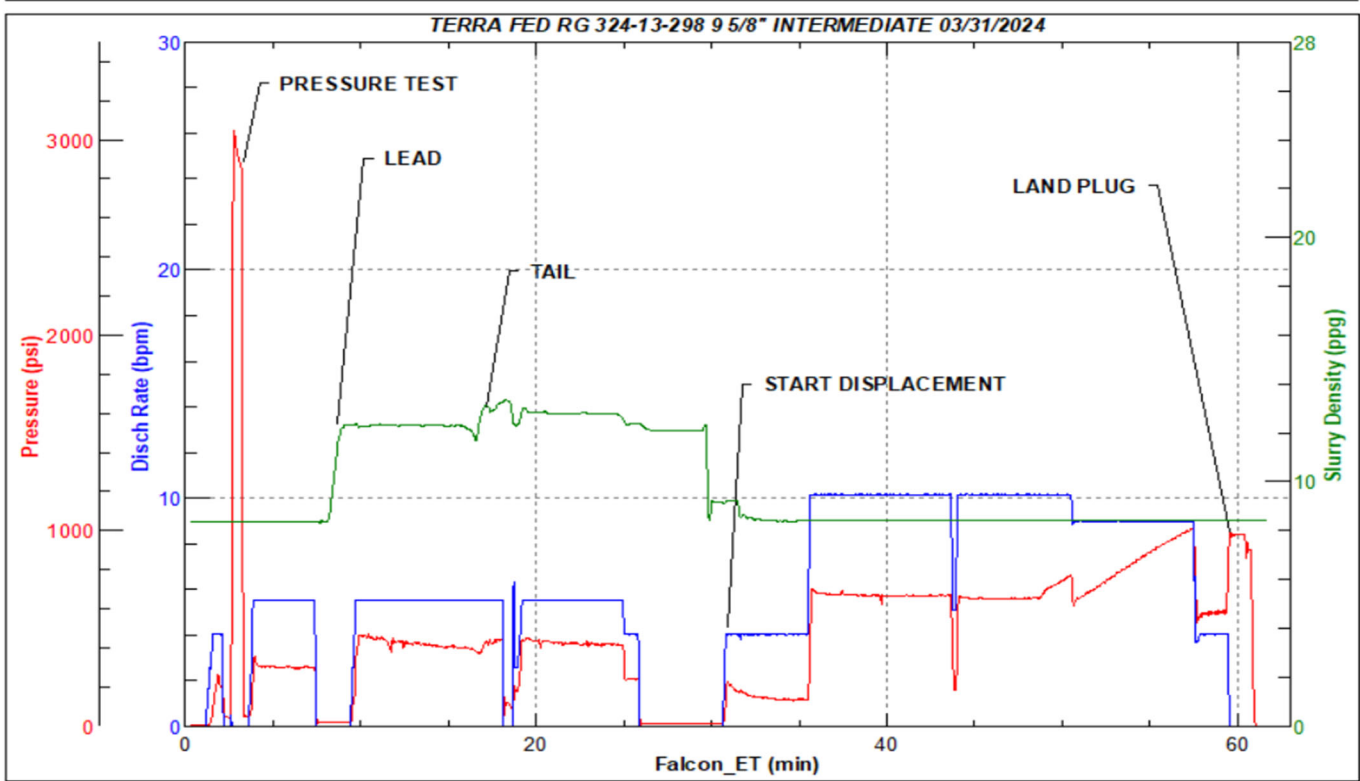
Job Logs

Line	Event	Date (MM/DD/YY)	Time (HH:MM)	Density (lb/gal)	Pump Rate (bpm)	Pump Volume (bbls)	Pipe Pressure (psi)	Comment
1	ARRIVED ON LOCATION	3/31/2024	14:00					ARRIVED ON LOCATION PER CUSTOMER REQUEST 14:00
2	HAZARD ASSESMENT	3/31/2024	14:05					
3	SPOT EQUIPMENT	3/31/2024	14:10					
4	PRE RIG UP SAFETY MEETING	3/31/2024	14:15					
5	RIGGED UP	3/31/2024	15:00					
6	PRE JOB SAFETY MEETING	3/31/2024	17:00					
7	STAB HEAD	3/31/2024	17:15					
8	START JOB	3/31/2024	17:23					START JOB
9	PRESSURE TEST LINES 3000 PSI	3/31/2024	17:25	8.34	1	1	3000	PRESSURE TEST LINES 3000 PSI
10	20 BBL FRESH WATER SPACER	3/31/2024	17:27	8.34	5	20	325	20 BBL FRESH WATER SPACER
11	START 42 BBL LEAD @ 12.3	3/31/2024	17:31	12.3	5	1	460	START 42 BBL LEAD SLURRY @ 12.3 (2.31,13.16) 102 SACKS TOTAL
12	END OF LEAD SLURRY	3/31/2024	17:38	12.3	5	42	385	END OF LEAD SLURRY
13	START 45 BBL TAIL @ 12.8	3/31/2024	17:38	12.8	5	1	360	START 45 BBL TAIL SLURRY @ 12.8 (2.03,11.16) 125 SACKS TOTAL
14	END OF TAIL SLURRY	3/31/2024	17:47	12.8	5	45	265	END OF TAIL SLURRY
15	SHUTDOWN/ DROP TOP PLUG	3/31/2024	17:47					SHUTDOWN/ DROP TOP PLUG
16	START 240 BBL FRESH WATER DISPLACEMENT	3/31/2024	17:52	8.34	4	1	156	START 240 BBL FRESH WATER DISPLACEMENT
17	50 BBL GONE ON DISPLACEMENT	3/31/2024	18:00	8.34	9	50	669	
18	100 BBL GONE ON DISPLACEMENT	3/31/2024	18:04	8.34	9	100	668	
19	150 BBL GONE ON DISPLACEMENT	3/31/2024	18:10	8.34	9	150	691	
20	200 BBL GONE ON DISPLACEMENT	3/31/2024	18:15	8.34	9	200	852	
21	PRESSURE BEFORE SLOWING RATE	3/31/2024	18:18	8.34	9	230	1010	PRESSURE BEFORE SLOWING RATE -1010
22	SLOW RATE PRESSURE	3/31/2024	18:18	8.34	4	230	578	SLOW RATE PRESSURE @ 4BPM - 578
23	PRESSURE BEFORE LANDING PLUG	3/31/2024	18:21	8.34	4	240	595	FINAL LIFT PRESSURE TO LAND PLUG - 595
24	LAND PLUG	3/31/2024	18:21	8.34	4	240	980	LAND PLUG- 980
25	CHECK FLOAT	3/31/2024	18:25					RETURNED 1 BBLs BACK UPON FLOAT CHECK
26	END OF CEMENTING SERVICES	3/31/2024	18:25					END OF CEMENTING SERVICES
27	POST JOB SAFETY MEETING	3/31/2024	18:30					
28	RIGGED DOWN	3/31/2024	19:20					
29	PRE CONVOY SAFETY MEETING	3/31/2024	19:25					
30	LOCATION DEPARTURE	3/31/2024	19:30					
31	END OF JOB	3/31/2024	19:30					END OF JOB

Pump Diagrams



JobMaster Program Version 5.01C1
Job Number: 90858
Customer: TERRA
Well Name: FED RG 324-13 298



Job Start: Sunday, March 31, 2024