



# **Terra Energy Partners, LLC**

## **SURFACE POST JOB REPORT**

**FED RG 424-13-298 05-103-12573**  
**S:13 T:2S R:98W Rio Blanco CO**

CallSheet #: 90410  
Proposal #: 74561



**SURFACE Post Job Report**

**Attention:** Mr. Dustin Childers | (936) 524-8828 | dchilders@terraep.com  
Terra Energy Partners, LLC  
4828 Loop Central Dr., Suite 900 | Houston, TX 77081

---

Dear Mr. Dustin Childers,

Thank you for the opportunity to provide cementing services on this well. American Cementing strives to achieve complete customer satisfaction. If you have any questions regarding the services or data provided, please contact American Cementing at any time.

Sincerely,

**Addison Kneale**

Lab Technician II | (904) 228-9560 | addison.kneale@americacementing.com

**Field Office**      28730 US-6, Rifle, CO 81650  
Phone: (970) 657-1187

## Job Details & Summary

### Geometry

Type	Function	OD (in)	ID (in)	Weight (lb/ft)	Thread	Top (ft)	Bottom (ft)	Excess (%)
Casing	Outer	20	19.5	53	n/a	0	80	0
Open Hole	Outer	n/a	17.5	n/a	n/a	80	1372	5
Casing	Inner	13.375	12.615	54.5	n/a	0	1376.41	0

### Timing

Event	Date/Time
ERTS	03/12/2024 02:00
Call Out	3/11/2024 17:00
Depart Facility	3/11/2024 23:45
On Location	3/12/2024 01:45
Rig Up Iron	3/12/2024 02:45
Job Started	3/12/2024 03:35
Job Completed	3/12/2024 05:44
Rig Down Iron	3/12/2024 06:44
Depart Location	3/12/2024 07:30

### Equipment / People

Unit Type	Unit	Power Unit	Employee #1
Cement Trailer Float	CTF-242	TRC-769	Jacob Kirchenwitz
Field Storage Silo	FSS-470		
Light Duty Vehicles	LDV-092		Eric Brown
Cement Pump Float	CPF-052	TRH-855	Collin Woronovitch

### General Job Information

Metrics	Value
Well Fluid Density	9 lb/gal
Well Fluid Type	WBM
Rig Circulation Vol	500 bbls
Rig Circulation Time	1 hours
Calculated Displacement	206 bbls
Actual Displacement	206 bbls
Total Spacer to Surface	20 bbls
Total CMT to Surface	67 bbls
Well Topped Out	No
Top Out Volume	N/A bbls

### Job Details

Metrics	Value
Well Full Prior to Job	Yes
Well Fluid Density Into Well	9 lb/gal
Well Fluid Density Out of Well	9 lb/gal

### Job Details (cont.)

Metrics	Value
BHCT	84 °F
BHST	102 °F

### Water Analysis

Metrics	Value	Recommended
Water Source	None	
Temperature	60 °F	50-80 °F
pH Level	7	5.5-8.5
Chlorides	80 mg/L	0-3000 mg/L
Total Alkalinity	100	0-1000
Total Hardness	100 mg/L	0-500 mg/L
Carbonates	N/A mg/L	0-100 mg/L
Sulfates	100 mg/L	0-1500 mg/L
Potassium	>200 mg/L	0-3000 mg/L
Iron	0 mg/L	0-300 mg/L

### Circulation

Lost Circulation Experienced
No

### Job Execution Information

Fluid	Product	Function	Density (lb/gal)	Yield (ft <sup>3</sup> /sk)	Water Rq. (gal/sk)	Water Rq. (gal/bbl)	Volume (sks)	Volume (bbl)	Designed Top (ft)
1	Water	Flush	8.34			42.00		20.00	0
2	Lead	Lead	12.30	2.31	13.16		461.00	189.58	0
3	Water	DisplacementFinal	8.34			42.00		206.00	0

### Job Fluid Details

Fluid	Type	Fluid	Product	Function	Conc.	Uom
2	Lead	Lead	ASTM TYPE IL	Cement	100.00	%
2	Lead	Lead	A-10	Accelerator	5.00	%BWOB
2	Lead	Lead	A-2	Accelerator	3.00	lb/sk
2	Lead	Lead	A-7P	Accelerator	2.00	lb/sk
2	Lead	Lead	IntegraSeal POLI	LostCirculation	0.25	lb/sk
2	Lead	Lead	STATIC FREE	Other	0.01	lb/sk
2	Lead	Lead	XCem-308	Defoamer	0.30	%BWOB

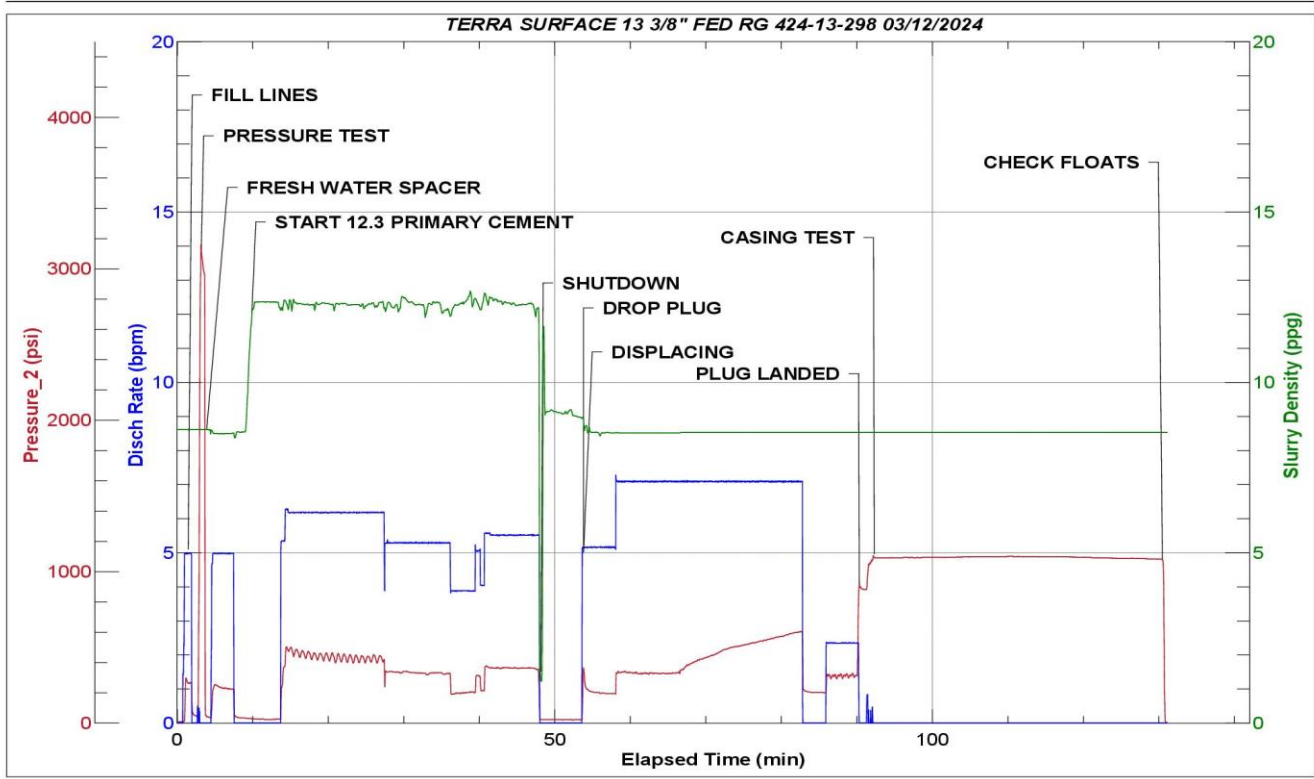
## Job Logs

Line	Event	Date (MM/DD/YY)	Time (HH:MM)	Density (lb/gal)	Pump Rate (bpm)	Pump Volume (bbls)	Pipe Pressure (psi)	Comment
1	Callout	3/11/2024	17:00					CREW CALLED IN TO GO TO JOB AND GET EQUIPMENT READY
2	Safety Meeting	3/11/2024	23:00					PRECONVOY SAFETY MEETING
3	Depart Location	3/11/2024	23:45					CREW LEFT RCO YARD TO GO TO LOCATION
4	Arrive On Location	3/12/2024	02:00					CREW HAS ARRIVED TO LOCATION PER CUSTOMER REQUEST
5	Safety Meeting	3/12/2024	02:05					PRERIG UP SAFETY MEETING
6	Rig Up Iron	3/12/2024	02:45					RIGGED UP IRON AND HOSES
7	Safety Meeting	3/12/2024	02:50					SAFETY MEETING WITH RIG CREW AND COMPANY MAN
8	Start Job	3/12/2024	03:30					START JOB
9	Fill Lines	3/12/2024	03:35	8.34	5	5	295	FILL IRON WITH 5 BBLs OF FRESH WATER
10	Pressure Test Lines	3/12/2024	03:39	8.34	1	1	3160	PRESSURE TEST LINES TO 3160 PSI
11	Pump Spacer	3/12/2024	03:40	8.34	5	20	290	START PUMPING 20 BBL FRESH WATER SPACER
12	Pump Cement	3/12/2024	03:48	12.3	5	0	320	BATCH UP 12.3 PRIMARY CEMENT AND CONFIRMED WEIGHT WITH MUD SCALE
13	Pump Cement	3/12/2024	03:57	12.3	6	50	427	PUMP 50 BBLs OF 12.3 PRIMARY CEMENT
14	Pump Cement	3/12/2024	04:05	12.3	5	50	350	PUMP 100 BBLs OF 12.3 PRIMARY CEMENT
15	Pump Cement	3/12/2024	04:17	12.3	5	50	372	PUMP 150 BBLs OF 12.3 PRIMARY CEMENT
16	Pump Cement	3/12/2024	04:23	12.3	5	39	330	PUMP 189 BBLs OF 12.3 PRIMARY CEMENT
17	Shutdown	3/12/2024	04:29					SHUT DOWN/ WASH PUMP AND GET READY TO DROP PLUG
18	Drop Top Plug	3/12/2024	04:30					PLUG DROPPED AND VERIFIED BY COMPANY MAN
19	Pump Displacement	3/12/2024	04:30	8.34	5	0	305	START 206 BBL DISPLACEMENT
20	Pump Displacement	3/12/2024	04:37	8.34	7	50	358	PUMP 50 BBLs OF FRESH WATER DISPLACEMENT
21	Pump Displacement	3/12/2024	04:44	8.34	7	50	433	PUMPED 100 BBLs OF FRESH WATER DISPLACEMENT
22	Pump Displacement	3/12/2024	04:51	8.34	7	50	535	PUMP 150 BBLs OF FRESH WATER DISPLACEMENT
23	Shutdown	3/12/2024	04:53	8.34	7	46	620	SHUT DOWN 10 BBLs EARLY TO ALLOW CEMENT TO FALL FINAL PSI BEFORE SHUTDOWN 620 AT 7 BPM
24	Pump Displacement	3/12/2024	05:00	8.34	2	10	353	FINISH DISPLACING THE CEMENT AND LAND PLUG
25	Land Plug	3/12/2024	05:05				915	PLUG LANDED FCP-353 LAND PSI 915 CIRCULATED 67 BBLs OF CEMENT TO SURFACE
26	Test Casing	3/12/2024	05:44				1106	START 30 MIN 1100 PSI CASING TEST. STARTING PSI- 1106 FINAL PSI-1096
27	Check Floats	3/12/2024	05:44					1 BBL BACK UPON FLOAT CHECK.
28	Safety Meeting	3/12/2024	05:55					PRERIG DOWN SAFETY MEETING
29	Rig Down Iron	3/12/2024	06:44					RIG DOWN IRON AND HOSES
30	Safety Meeting	3/12/2024	07:00					PRECONVOY SAFETY MEETING
31	Depart Location	3/12/2024	07:30					CREW DEPART LOCATION
32	End Job	3/12/2024	07:30					END JOB

# Pump Diagrams



JobMaster Program Version 5.01C1  
Job Number: 90410  
Customer: TERRA  
Well Name: FED RG 424-13-298



Job Start: Tuesday, March 12, 2024