



# **Terra Energy Partners, LLC**

## **INTERMEDIATE POST JOB REPORT**

**FED RG 424-13-298 05-103-12573**  
**S:13 T:2S R:98W Rio Blanco CO**

CallSheet #: 90808  
Proposal #: 75266



**INTERMEDIATE Post Job Report**

**Attention:** Mr. Dustin Childers | (936) 524-8828 | dchilders@terraep.com  
Terra Energy Partners, LLC  
4828 Loop Central Dr., Suite 900 | Houston, TX 77081

---

Dear Mr. Dustin Childers,

Thank you for the opportunity to provide cementing services on this well. American Cementing strives to achieve complete customer satisfaction. If you have any questions regarding the services or data provided, please contact American Cementing at any time.

Sincerely,

**Addison Kneale**

Field Engineer I | (904) 228-9560 | addison.kneale@americacementing.com

**Field Office**      28730 US-6, Rifle, CO 81650  
Phone: (970) 657-1187

## Job Details & Summary

### Geometry

Type	Function	OD (in)	ID (in)	Weight (lb/ft)	Thread	Top (ft)	Bottom (ft)	Excess (%)
Casing	Outer	13.375	12.615	54.5	n/a	0	1385	0
Open Hole	Outer	n/a	12.25	n/a	n/a	1385	2617	50
Open Hole	Outer	n/a	12.25	n/a	n/a	2617	3117	50
Casing	Inner	9.625	8.921	36	n/a	0	3117	0

### Timing

Event	Date/Time
ERTS	03/23/2024 00:00
Call Out	3/23/2024 12:00
Depart Facility	3/23/2024 16:30
On Location	3/23/2024 18:00
Rig Up Iron	3/23/2024 18:15
Job Started	3/23/2024 21:15
Job Completed	3/23/2024 22:18
Rig Down Iron	3/23/2024 22:30
Depart Location	3/23/2024 23:00

### Equipment / People

Unit Type	Unit	Power Unit	Employee #1
Cement Trailer Float	CTF-007	TRC-769	Jacob Kirchenwitz
Light Duty Vehicles	LDV-147		Kyle Crawford
Cement Pump Float	CPF-052	TRH-1140	Omar Guerra

### General Job Information

Metrics	Value
Well Fluid Density	9 lb/gal
Well Fluid Type	WBM
Rig Circulation Vol	400 bbls
Rig Circulation Time	1.5 hours
Calculated Displacement	240.5 bbls
Actual Displacement	240.5 bbls
Total Spacer to Surface	n/a bbls
Total CMT to Surface	n/a bbls
Well Topped Out	No
Top Out Volume	n bbls

### Job Details

Metrics	Value
Well Full Prior to Job	Yes
Well Fluid Density Into Well	9 lb/gal
Well Fluid Density Out of Well	9 lb/gal

### Job Details (cont.)

Metrics	Value
BHCT	87 °F
BHST	118 °F

### Water Analysis

Metrics	Value	Recommended
Water Source	None	
Temperature	44 °F	50-80 °F
pH Level	8.5	5.5-8.5
Total Alkalinity	450	0-1000
Total Hardness	250 mg/L	0-500 mg/L

### Circulation

Lost Circulation Experienced
No

### Job Execution Information

Fluid	Product	Function	Density (lb/gal)	Yield (ft <sup>3</sup> /sk)	Water Rq. (gal/sk)	Water Rq. (gal/bbl)	Volume (sks)	Volume (bbl)	Designed Top (ft)
1	Water	Flush	8.34			42.00		20.00	1878
2	Lead	Lead	12.30	2.31	13.16		102.00	41.95	2117
3	Tail	Tail	12.80	2.03	11.16		125.00	45.29	2617
4	Water	DisplacementFinal	8.34			42.00		238.00	0

### Job Fluid Details

Fluid	Type	Fluid	Product	Function	Conc.	Uom
2	Lead	Lead	ASTM TYPE IL	Cement	100.00	%
2	Lead	Lead	A-10	Accelerator	5.00	%BWOB
2	Lead	Lead	A-2	Accelerator	3.00	lb/sk
2	Lead	Lead	A-7P	Accelerator	2.00	lb/sk
2	Lead	Lead	IntegraSeal POLI	LostCirculation	0.25	lb/sk
2	Lead	Lead	STATIC FREE	Other	0.01	lb/sk
2	Lead	Lead	XCem-308	Defoamer	0.30	lb/sk
3	Tail	Tail	ASTM TYPE IL	Cement	100.00	%
3	Tail	Tail	A-10	Accelerator	5.00	%BWOB
3	Tail	Tail	A-2	Accelerator	2.00	lb/sk
3	Tail	Tail	A-7P	Accelerator	2.00	lb/sk
3	Tail	Tail	IntegraSeal POLI	LostCirculation	0.25	lb/sk
3	Tail	Tail	STATIC FREE	Other	0.01	lb/sk
3	Tail	Tail	XCem-308	Defoamer	0.30	lb/sk

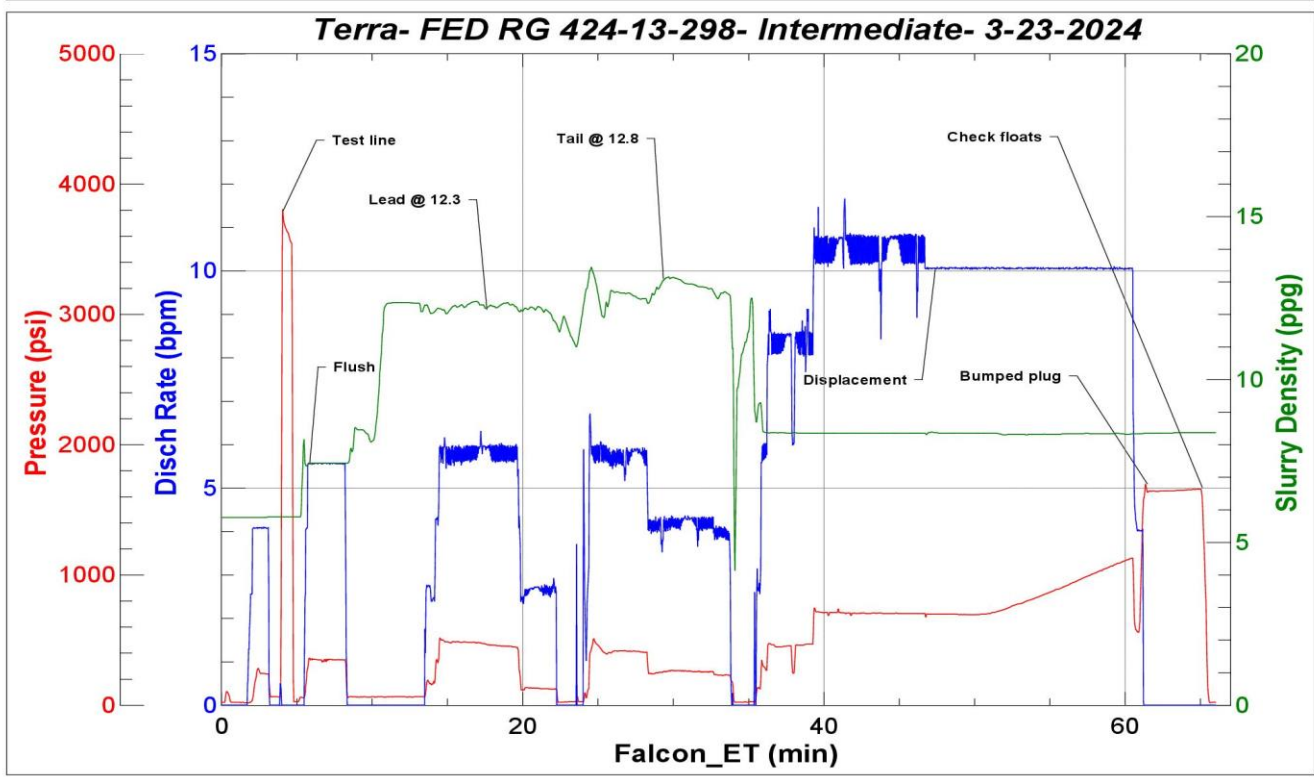
## Job Logs

Line	Event	Date (MM/DD/YY)	Time (HH:MM)	Density (lb/gal)	Pump Rate (bpm)	Pump Volume (bbls)	Pipe Pressure (psi)	Comment
1	Arrive On Location	3/23/2024	18:00					Arrive on location. Start service
2	Rig Up Iron	3/23/2024	18:15					Rig up
3	Waiting	3/23/2024	19:00					Waiting on rig to finish running casing
4	Safety Meeting	3/23/2024	20:45					Safety meeting with rig crew, pusher, company man and American
5	Check Iron	3/23/2024	21:14					Check iron with rig air
6	Fill Lines	3/23/2024	21:15	8.34	4	5	270	Fill lines with fresh water
7	Pressure Test Lines	3/23/2024	21:18				3700	Test lines
8	Pump Spacer	3/23/2024	21:19	8.34	5.5	15	350	Fresh water spacer
9	Pump Lead Cement	3/23/2024	21:27	12.3	6		490	Lead cement @ 12.3
10	Pump Lead Cement	3/23/2024	21:36	12.3	2.5	42	135	End of lead
11	Pump Tail Cement	3/23/2024	21:38	12.8	6		475	Tail cement @ 12.8
12	Pump Tail Cement	3/23/2024	21:47	12.8	4	45	260	End of tail
13	Shutdown	3/23/2024	21:28					Shut down
14	Drop Top Plug	3/23/2024	21:49					Drop top plug
15	Pump Displacement	3/23/2024	21:49	8.34	10	200	1115	Displacement 100 gone: 10 b/m @ 700 psi 200: 10 @ 985
16	Slow Pump Rate	3/23/2024	22:14	8.34	4	230	1125	Slow rate last 10 bbls to 4 b/m
17	Land Plug	3/23/2024	22:15	8.34	4	240.5	1645	Bumped plug @ 1645 psi
18	Check Floats	3/23/2024	22:18					Bled off. Floats holding. 1.5 bbls back
19	Rig Down Iron	3/23/2024	22:30					Wash up and rig down
20	End Job	3/23/2024	23:00					Stop service.

# Pump Diagrams



JobMaster Program Version 5.01C1  
 Job Number:  
 Customer:  
 Well Name:



Job Start: Saturday, March 23, 2024