



Terra Energy Partners, LLC

SURFACE POST JOB REPORT

FEDERAL RG 524-13-298 05-103-12569
S:13 T:2S R:98W Rio Blanco CO

CallSheet #: 90383
Proposal #: 74532



SURFACE Post Job Report

Attention: Mr. Dustin Childers | (936) 524-8828 | dchilders@terraep.com
Terra Energy Partners, LLC
4828 Loop Central Dr., Suite 900 | Houston, TX 77081

Dear Mr. Dustin Childers,

Thank you for the opportunity to provide cementing services on this well. American Cementing strives to achieve complete customer satisfaction. If you have any questions regarding the services or data provided, please contact American Cementing at any time.

Sincerely,

Addison Kneale

Lab Technician II | (904) 228-9560 | addison.kneale@americacementing.com

Field Office 28730 US-6, Rifle, CO 81650
Phone: (970) 657-1187

Job Details & Summary

Geometry

Type	Function	OD (in)	ID (in)	Weight (lb/ft)	Thread	Top (ft)	Bottom (ft)	Excess (%)
Casing	Outer	20	19.5	53	n/a	0	80	0
Open Hole	Outer	n/a	17.5	n/a	n/a	80	1383	40
Casing	Inner	13.375	12.615	54.5	n/a	0	1385	0

Equipment / People

Unit Type	Unit	Power Unit	Employee #1
Cement Trailer Float	CTF-555	TRC-425	Duewayne Jackson
Field Storage Silo	FSS-438		
Light Duty Vehicles	LDV-128		Gerron McClure
Cement Pump Float	CPF-011	TRH-677	Eric Brown
Cement Pump Float	CPF-012	TRH-1137	Christopher Lough
Cement Utility Float	CUF-164	LDV-145	Devin Burton

Timing

Event	Date/Time
ERTS	02/23/2024 00:00
Call Out	2/23/2024 20:30
Depart Facility	2/23/2024 23:34
On Location	2/24/2024 02:00
Rig Up Iron	2/24/2024 03:00
Job Started	2/24/2024 08:50
Job Completed	2/24/2024 11:40
Rig Down Iron	2/24/2024 12:45
Depart Location	2/24/2024 13:00

General Job Information

Metrics	Value
Well Fluid Density	9 lb/gal
Well Fluid Type	WBM
Rig Circulation Vol	500 bbls
Rig Circulation Time	2 hours
Calculated Displacement	207 bbls
Actual Displacement	207 bbls
Total Spacer to Surface	20 bbls
Total CMT to Surface	66 bbls
Well Topped Out	No
Top Out Volume	N/A bbls

Job Details

Metrics	Value
Well Full Prior to Job	Yes
Well Fluid Density Into Well	9 lb/gal
Well Fluid Density Out of Well	9 lb/gal

Job Details (cont.)

Metrics	Value
BHCT	84 °F
BHST	102 °F

Water Analysis

Metrics	Value	Recommended
Water Source	None	
Temperature	68 °F	50-80 °F
pH Level	6	5.5-8.5
Chlorides	200 mg/L	0-3000 mg/L
Total Alkalinity	10	0-1000
Total Hardness	10 mg/L	0-500 mg/L
Carbonates	10 mg/L	0-100 mg/L
Sulfates	100 mg/L	0-1500 mg/L
Potassium	200 mg/L	0-3000 mg/L
Iron	10 mg/L	0-300 mg/L

Circulation

Lost Circulation Experienced
No

Job Execution Information

Fluid	Product	Function	Density (lb/gal)	Yield (ft ³ /sk)	Water Rq. (gal/sk)	Water Rq. (gal/bbl)	Volume (sks)	Volume (bbl)	Designed Top (ft)
1	Water	Flush	8.34			42.00		20.00	0
2	Primary	Primary	12.30	2.31	13.16		596.00	245.09	0
3	Water	DisplacementFinal	8.34			42.00		207.00	0

Job Fluid Details

Fluid	Type	Fluid	Product	Function	Conc.	Uom
2	Primary	Primary	ASTM TYPE IL	Cement	100.00	%
2	Primary	Primary	A-10	Accelerator	5.00	%BWOB
2	Primary	Primary	A-2	Accelerator	3.00	lb/sk
2	Primary	Primary	A-7P	Accelerator	2.00	lb/sk
2	Primary	Primary	IntegraSeal POLI	LostCirculation	0.25	lb/sk
2	Primary	Primary	STATIC FREE	Other	0.01	lb/sk
2	Primary	Primary	XCem-308	Defoamer	0.30	%BWOB

Job Logs

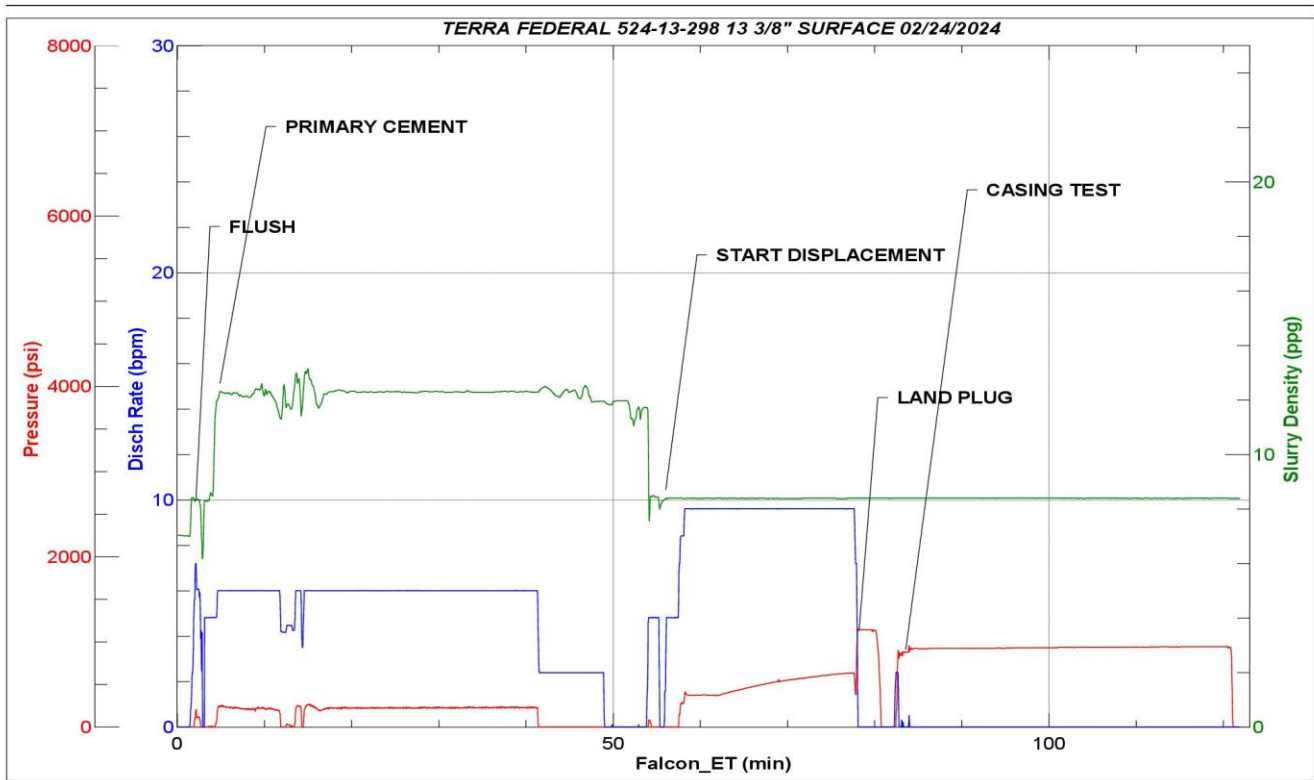
Line	Event	Date (MM/DD/YY)	Time (HH:MM)	Density (lb/gal)	Pump Rate (bpm)	Pump Volume (bbls)	Pipe Pressure (psi)	Comment
1	ARRIVED ON LOCATION	2/24/2024	02:00					ARRIVED ON LOCATION PER CUSTOMER REQUEST 02:00
2	HAZARD ASSESMENT	2/24/2024	02:05					
3	SPOT EQUIPMENT	2/24/2024	02:10					
4	PRE RIG UP SAFETY MEETING	2/24/2024	02:15					
5	RIGGED UP	2/24/2024	03:00					
6	PRE JOB SAFETY MEETING	2/24/2024	08:30					
7	STAB HEAD	2/24/2024	08:45					
8	START JOB	2/24/2024	08:50					START JOB
9	PRESSURE TEST LINES 3000	2/24/2024	09:00	8.34	1	1	3000	PRESSURE TEST LINES 3000 PSI
10	20 BBL FRESH WATER SPACER	2/24/2024	09:15	8.34	5	20	338	20 BBL FRESH WATER SPACER
11	START PRIMARY CEMENT @ 12.3 PPG	2/24/2024	09:57	12.3	5	1	338	START 245.2 BBL PRIMARY SLURRY @ 12.3 (2.31,13.16) 596 TOTAL SACKS
12	50 BBL SLURRY GONE	2/24/2024	10:03	12.3	6	50	221	
13	100 BBL SLURRY GONE	2/24/2024	10:09	12.3	6	100	221	
14	150 BBL SLURRY GONE	2/24/2024	10:15	12.3	6	150	359	
15	200 BBL SLURRY GONE	2/24/2024	10:21	12.3	6	200	351	
16	END OF PRIMARY SLURRY	2/24/2024	10:27	12.3	2.5	245	10	
17	SHUT DOWN/ DROP PLUG	2/24/2024	10:27					SHUT DOWN DROP TOP PLUG
18	START 207.1 BBL FW DISPLACEMENT	2/24/2024	10:32	8.34	4	1	403	START 207.1BBL DISPLACEMENT
19	50 BBL GONE FW DISPLACEMENT	2/24/2024	10:38	8.34	8.5	50	491	
20	100 BBL GONE FW DISPLACEMENT	2/24/2024	10:43	8.34	9.5	100	620	
21	150 BBL GONE FW DISPLACEMENT	2/24/2024	10:49	8.34	9.5	150	693	
22	PSI BEFORE SLOWING RATE	2/24/2024	10:55	8.34	9.5	197	742	PRESSURE BEFORE SLOWING RATE-742
23	SLOW RATE PSI	2/24/2024	10:55	8.34	4	197	415	SLOW RATE PSI @4BPM-415
24	PRESSURE TO LAND PLUG	2/24/2024	11:00	8.34	4	207	1253	FINAL LIFT PSI TO LAND PLUG-1253
25	Land Plug	2/24/2024	11:00	8.34	4	207	1253	LAND PLUG-1253
26	Check Floats\CASING TEST 1000PSI FOR 30 MINS	2/24/2024	11:04					BBLS RETURNED UPON FLOAT CHECK- 1.5BBLS BACK\CASING TEST 1000PSI FOR 30MINS LOWPSI1031\HIGH PSI1048
27	END OF CEMENTING SERVICES	2/24/2024	11:40					END OF CEMENTING SERVICES-
28	POST JOB PRERIG DOWN SAFETY MEETING	2/24/2024	11:45					
29	Rig Down Iron	2/24/2024	12:45					
30	PRECONVOY SAFETY MEETING	2/24/2024	12:55					

Line	Event	Date (MM/DD/YY)	Time (HH:MM)	Density (lb/gal)	Pump Rate (bpm)	Pump Volume (bbls)	Pipe Pressure (psi)	Comment
31	LOCATION DEPARTURE	2/24/2024	13:00					
32	End Job	2/24/2024	13:00					END JOB

Pump Diagrams



JobMaster Program Version 5.01C1
Job Number: 90383
Customer: TERRA
Well Name: FEDERAL RG 524-13 298



Job Start: Saturday, February 24, 2024