



# **Terra Energy Partners, LLC**

## **LONG STRING POST JOB REPORT**

**FEDERAL RG 524-13-298 05-103-12569**  
**S:13 T:2S R:98W Rio Blanco CO**

CallSheet #: 90743  
Proposal #: 75174



**LONG STRING Post Job Report**

**Attention:** Mr. Dustin Childers | (936) 524-8828 | dchilders@terraep.com  
Terra Energy Partners, LLC  
4828 Loop Central Dr., Suite 900 | Houston, TX 77081

---

Dear Mr. Dustin Childers,

Thank you for the opportunity to provide cementing services on this well. American Cementing strives to achieve complete customer satisfaction. If you have any questions regarding the services or data provided, please contact American Cementing at any time.

Sincerely,

**Addison Kneale**

Field Engineer I | (904) 228-9560 | addison.kneale@americacementing.com

**Field Office**      28730 US-6, Rifle, CO 81650  
Phone: (970) 657-1187

## Job Details & Summary

### Geometry

Type	Function	OD (in)	ID (in)	Weight (lb/ft)	Thread	Top (ft)	Bottom (ft)	Excess (%)
Casing	Outer	9.625	8.921	36	n/a	0	3173	0
Open Hole	Outer	n/a	8.75	n/a	n/a	3125	6282	45
Open Hole	Outer	n/a	8.75	n/a	n/a	6282	11785	45
Casing	Inner	4.5	4	11.6	n/a	0	11793	0

### Equipment / People

Unit Type	Unit	Power Unit	Employee #1
Cement Trailer Float	CTF-246	TRC-249	Steven Richey
Field Storage Silo	FSS-438		
Field Storage Silo	FSS-470		
Light Duty Vehicles	LDV-157		Francisco Castillo
Cement Pump Float	CPF-052	TRH-855	Eric Brown

### Timing

Event	Date/Time
ERTS	03/21/2024 23:30
Call Out	3/21/2024 15:30
Depart Facility	3/21/2024 21:30
On Location	3/21/2024 23:30
Rig Up Iron	3/22/2024 00:00
Job Started	3/22/2024 05:57
Job Completed	3/22/2024 08:45
Rig Down Iron	3/22/2024 09:30
Depart Location	3/22/2024 10:45

### General Job Information

Metrics	Value
Well Fluid Density	10 lb/gal
Well Fluid Type	WBM
Rig Circulation Vol	660 bbls
Rig Circulation Time	1.5 hours
Calculated Displacement	182 bbls
Actual Displacement	182 bbls
Total Spacer to Surface	0 bbls
Total CMT to Surface	0 bbls
Well Topped Out	No
Top Out Volume	N/A bbls

### Job Details

Metrics	Value
Well Full Prior to Job	Yes
Well Fluid Density Into Well	10 lb/gal
Well Fluid Density Out of Well	10 lb/gal

### Job Details (cont.)

Metrics	Value
BHCT	199 °F
BHST	263 °F

### Water Analysis

Metrics	Value	Recommended
Water Source	None	
Temperature	52 °F	50-80 °F
pH Level	6	5.5-8.5
Chlorides	0 mg/L	0-3000 mg/L
Total Alkalinity	240	0-1000
Total Hardness	250 mg/L	0-500 mg/L
Carbonates	0 mg/L	0-100 mg/L
Sulfates	200 mg/L	0-1500 mg/L
Potassium	250 mg/L	0-3000 mg/L
Iron	0 mg/L	0-300 mg/L

### Circulation

Lost Circulation Experienced
No

### Job Execution Information

Fluid	Product	Function	Density (lb/gal)	Yield (ft <sup>3</sup> /sk)	Water Rq. (gal/sk)	Water Rq. (gal/bbl)	Volume (sks)	Volume (bbl)	Designed Top (ft)
1	Water	Flush	8.34			42.00		10.00	6156
2	Lead	Lead	12.70	2.13	11.42		721.00	273.29	6282
3	Tail	Tail	13.50	2.01	9.72		884.00	316.37	7843
4	Displacement	DisplacementFinal	8.34			42.00		182.00	0

### Job Fluid Details

Fluid	Type	Fluid	Product	Function	Conc.	Uom
2	Lead	Lead	ASTM TYPE IL	Cement	100.00	%
2	Lead	Lead	A-2	Accelerator	0.10	%BWOB
2	Lead	Lead	FL-66	FluidLoss	0.20	%BWOB
2	Lead	Lead	GW-86	Viscosifier	0.10	%BWOB
2	Lead	Lead	IntegraSeal PHENO	LostCirculation	3.00	lb/sk
2	Lead	Lead	IntegraSeal POLI	LostCirculation	0.25	lb/sk
2	Lead	Lead	R-3	Retarder	0.60	%BWOB
2	Lead	Lead	STATIC FREE	Other	0.01	lb/sk
2	Lead	Lead	XCem-1009	Extender	10.00	lb/sk
2	Lead	Lead	XCem-308	Defoamer	0.30	%BWOB
3	Tail	Tail	CLASS G	Cement	70.00	%
3	Tail	Tail	FLY ASH (POZZOLAN)	Extender	30.00	%
3	Tail	Tail	BENTONITE	Viscosifier	8.00	%BWOB
3	Tail	Tail	FL-24	FluidLoss	0.40	%BWOB
3	Tail	Tail	IntegraSeal PHENO	LostCirculation	3.00	lb/sk
3	Tail	Tail	S-8	StrengthRetgression	26.00	%BWOB
3	Tail	Tail	XCem-308	Defoamer	0.30	%BWOB
3	Tail	Tail	XCem-916	Retarder	0.35	%BWOB

## Job Logs

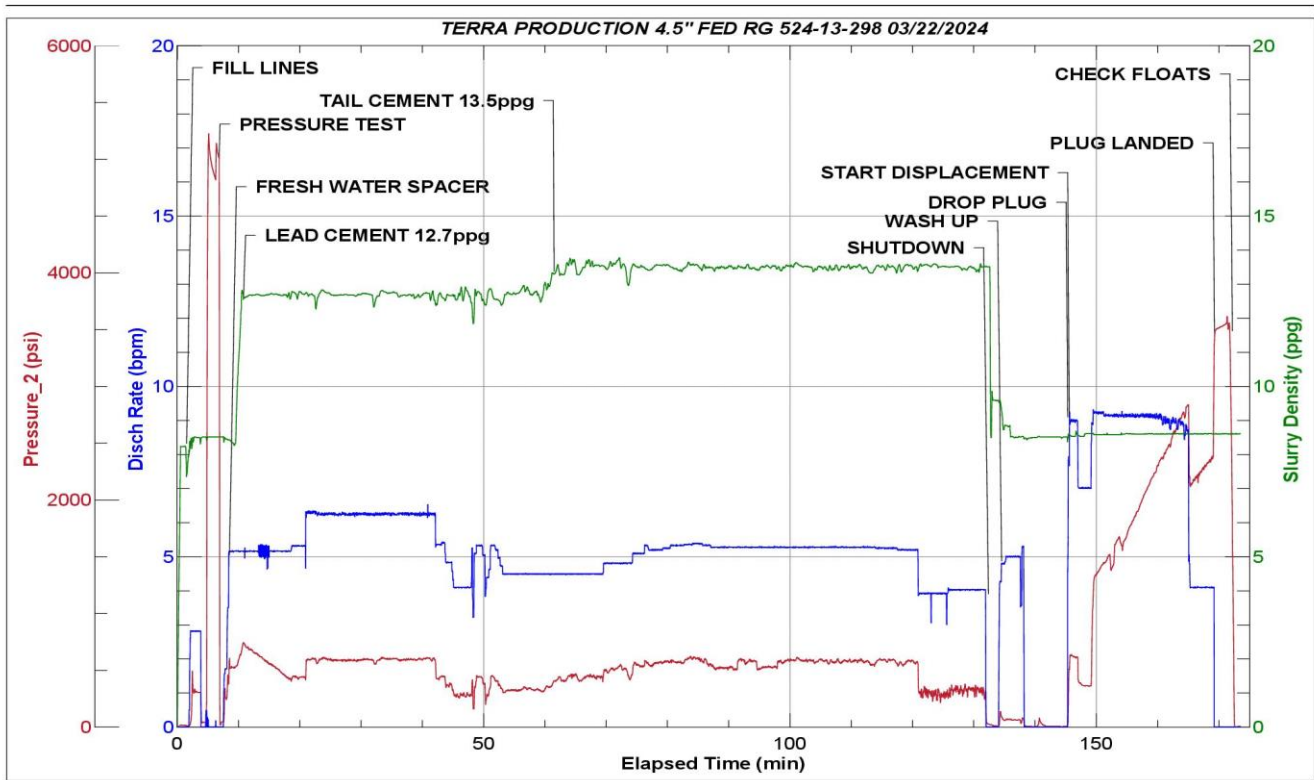
Line	Event	Date (MM/DD/YY)	Time (HH:MM)	Density (lb/gal)	Pump Rate (bpm)	Pump Volume (bbls)	Pipe Pressure (psi)	Comment
1	Callout	3/21/2024	15:30					CALL OUT FOR JOB
2	Safety Meeting	3/21/2024	21:00					PRECONVOY SAFETY MEETING WITH CREW
3	Depart Location	3/21/2024	21:30					DEPART RCO YARD FOR LOCATION
4	Arrive On Location	3/21/2024	23:30					ARRIVED ON LOCATION PER CUSTOMER REQUEST
5	Safety Meeting	3/21/2024	23:35					PRERIG UP SAFETY MEETING
6	Rig Up Iron	3/22/2024	00:00					RIG UP IRON
7	Start Job	3/22/2024	05:57					START JOB
8	Fill Lines	3/22/2024	05:57	8.34	3	5	353	FILL LINES WITH 5 BBLS OF FRESH WATER
9	Pressure Test Lines	3/22/2024	06:00	8.34	1	1	5123	PRESSURE TEST LINES TO 5000 PSI
10	Pump Spacer	3/22/2024	06:03	8.34	5	10	597	PUMP 10 BBLS OF FRESH WATER SPACER
11	Pump Lead Cement	3/22/2024	06:06	12.7	5	0	703	START PUMPING LEAD CEMENT @12.7 PPG (2.31y, 11.42gps)
12	Pump Lead Cement	3/22/2024	06:16	12.7	6	50	563	PUMP 50 BBLS OF LEAD CEMENT
13	Pump Lead Cement	3/22/2024	06:24	12.7	6	50	555	PUMP 100 BBLS OF LEAD CEMENT
14	Pump Lead Cement	3/22/2024	06:31	12.7	6	50	591	PUMP 150 BBLS OF LEAD CEMENT
15	Pump Lead Cement	3/22/2024	06:40	12.7	5	50	379	PUMP 200 BBLS OF LEAD CEMENT
16	Pump Lead Cement	3/22/2024	06:56	12.7	4.5	73	373	PUMP 273 BBLS OF LEAD CEMENT
17	Pump Tail Cement	3/22/2024	06:56	13.5	4.5	0	373	START PUMPING TAIL CEMENT @13.5 PPG (2.01y, 9.72gps)
18	Pump Tail Cement	3/22/2024	07:06	13.5	4.8	50	520	PUMP 50 BBLS OF TAIL CEMENT
19	Pump Tail Cement	3/22/2024	07:17	13.5	5	50	547	PUMP 100 BBLS OF TAIL CEMENT
20	Pump Tail Cement	3/22/2024	07:26	13.5	5	50	499	PUMP 150 BBLS OF TAIL CEMENT
21	Pump Tail Cement	3/22/2024	07:36	13.5	5	50	599	PUMP 200 BBLS OF TAIL CEMENT
22	Pump Tail Cement	3/22/2024	07:45	13.5	5	50	573	PUMP 250 BBLS OF TAIL CEMENT
23	Pump Tail Cement	3/22/2024	08:06	13.5	5	66	583	PUMP 316 BBLS OF TAIL CEMENT
24	Shutdown	3/22/2024	08:07					SHUTDOWN/ WASH UP PUMP TO THE PIT
25	Drop Top Plug	3/22/2024	08:20					DROP TOP PLUG/ VERIFIED BY COMPANY MAN
26	Pump Displacement	3/22/2024	08:20	8.34	9	0	589	START PUMPING 182 BBL KCL WATER DISPLACEMENT
27	Pump Displacement	3/22/2024	08:26	8.34	9	50	2017	PUMP 50 BBLS OF DISPLACEMENT
28	Pump Displacement	3/22/2024	08:31	8.34	9	50	2063	PUMP 100 BBLS OF DISPLACEMENT
29	Pump Displacement	3/22/2024	08:38	8.34	9	72	2661	PUMP 172 BBLS OF DISPLACEMENT
30	Slow Pump Rate	3/22/2024	08:40	8.34	4	10	2394	SLOW RATE TO PREPARE TO LAND PLUG/ FINAL CIRCULATING PRESSURE WAS 2394 PSI, LANDED PLUG AT 3550

Line	Event	Date (MM/DD/YY)	Time (HH:MM)	Density (lb/gal)	Pump Rate (bpm)	Pump Volume (bbls)	Pipe Pressure (psi)	Comment
31	Land Plug	3/22/2024	08:44	8.34	4		3550	PLUG LANDED 3550 PSI/FULL RETURNS
32	Check Floats	3/22/2024	08:45					CHECK FLOATS, FLOATS HELD AND THERE WAS 2.5 BBLS RETURNED
33	Safety Meeting	3/22/2024	09:00					PRERIG DOWN SAFETY MEETING
34	Rig Down Iron	3/22/2024	09:30					RIG DOWN IRON
35	Depart Location	3/22/2024	10:45					DEPART LOCATION TO RCO YARD
36	End Job	3/22/2024	10:45					END JOB

## Pump Diagrams



JobMaster Program Version 5.01C1  
Job Number: 90743  
Customer: TERRA  
Well Name: FED RG 524-13-298



Job Start: Friday, March 22, 2024