



# **Terra Energy Partners, LLC**

## **INTERMEDIATE POST JOB REPORT**

**FEDERAL RG 524-13-298 05-103-12569**  
**S:13 T:2S R:98W Rio Blanco CO**

CallSheet #: 90717  
Proposal #: 75148



**INTERMEDIATE Post Job Report**

**Attention:** Mr. Dustin Childers | (936) 524-8828 | dchilders@terraep.com  
Terra Energy Partners, LLC  
4828 Loop Central Dr., Suite 900 | Houston, TX 77081

---

Dear Mr. Dustin Childers,

Thank you for the opportunity to provide cementing services on this well. American Cementing strives to achieve complete customer satisfaction. If you have any questions regarding the services or data provided, please contact American Cementing at any time.

Sincerely,

**Krystal Schell**

Field Engineer I | (719) 992-1830 | krystal.schell@americacementing.com

**Field Office**      28730 US-6, Rifle, CO 81650  
Phone: (970) 657-1187

## Job Details & Summary

### Geometry

Type	Function	OD (in)	ID (in)	Weight (lb/ft)	Thread	Top (ft)	Bottom (ft)	Excess (%)
Casing	Outer	13.375	12.615	54.5	n/a	0	1385	0
Open Hole	Outer	n/a	12.25	n/a	n/a	1385	2625	50
Open Hole	Outer	n/a	12.25	n/a	n/a	2625	3163	50
Casing	Inner	9.625	8.921	36	n/a	0	3156.66	0

### Equipment / People

Unit Type	Unit	Power Unit	Employee #1
Cement Trailer Float	CTF-007	TRC-053	Chuck Martin
Light Duty Vehicles	LDV-092		Collin Woronovitch
Cement Pump Float	CPF-052	TRH-855	Christopher Lough

### Timing

Event	Date/Time
ERTS	03/14/2024 14:30
Call Out	3/14/2024 07:30
Depart Facility	3/14/2024 12:15
On Location	3/14/2024 13:40
Rig Up Iron	3/14/2024 15:00
Job Started	3/14/2024 21:00
Job Completed	3/14/2024 22:40
Rig Down Iron	3/14/2024 23:00
Depart Location	3/15/2024 00:15

### General Job Information

Metrics	Value
Well Fluid Density	9 lb/gal
Well Fluid Type	WBM
Rig Circulation Vol	480 bbls
Rig Circulation Time	1 hours
Calculated Displacement	240.3 bbls
Actual Displacement	240 bbls
Total Spacer to Surface	0 bbls
Total CMT to Surface	0 bbls
Well Topped Out	N/A

### Job Details

Metrics	Value
Flare Prior to Job	No
Flare Prior to Job	0 units
Flare During Job	No
Flare During Job	0 units
Flare at End of Job	No
Flare at End of Job	0 units
Well Full Prior to Job	Yes
Well Fluid Density Into Well	9 lb/gal
Well Fluid Density Out of Well	9 lb/gal

### Job Details (cont.)

Metrics	Value
BHCT	87 °F
BHST	118 °F

### Water Analysis

Metrics	Value	Recommended
Water Source	Upright Rig Tank	
Temperature	69 °F	50-80 °F
pH Level	7	5.5-8.5
Chlorides	80 mg/L	0-3000 mg/L
Total Alkalinity	100	0-1000
Total Hardness	80 mg/L	0-500 mg/L
Carbonates	N/A mg/L	0-100 mg/L
Sulfates	100 mg/L	0-1500 mg/L
Potassium	100 mg/L	0-3000 mg/L
Iron	0 mg/L	0-300 mg/L

## Circulation

Lost Circulation Experienced
------------------------------

No
----

## Job Execution Information

Fluid	Product	Function	Density (lb/gal)	Yield (ft <sup>3</sup> /sk)	Water Rq. (gal/sk)	Water Rq. (gal/bbl)	Volume (sks)	Volume (bbl)	Designed Top (ft)
1	Water	Flush	8.34			42.00		20.00	1886
2	Lead	Lead	12.30	2.31	13.16		102.00	41.95	2125
3	Tail	Tail	12.80	2.03	11.16		125.00	45.29	2625
4	Water	DisplacementFinal	8.34			42.00		240.00	0

## Job Fluid Details

Fluid	Type	Fluid	Product	Function	Conc.	Uom
2	Lead	Lead	ASTM TYPE IL	Cement	100.00	%
2	Lead	Lead	A-10	Accelerator	5.00	%BWOB
2	Lead	Lead	A-2	Accelerator	3.00	lb/sk
2	Lead	Lead	A-7P	Accelerator	2.00	lb/sk
2	Lead	Lead	IntegraSeal POLI	LostCirculation	0.25	lb/sk
2	Lead	Lead	STATIC FREE	Other	0.01	lb/sk
2	Lead	Lead	XCem-308	Defoamer	0.30	lb/sk
3	Tail	Tail	ASTM TYPE IL	Cement	100.00	%
3	Tail	Tail	A-10	Accelerator	5.00	%BWOB
3	Tail	Tail	A-2	Accelerator	2.00	lb/sk
3	Tail	Tail	A-7P	Accelerator	2.00	lb/sk
3	Tail	Tail	IntegraSeal POLI	LostCirculation	0.25	lb/sk
3	Tail	Tail	STATIC FREE	Other	0.01	lb/sk
3	Tail	Tail	XCem-308	Defoamer	0.30	lb/sk

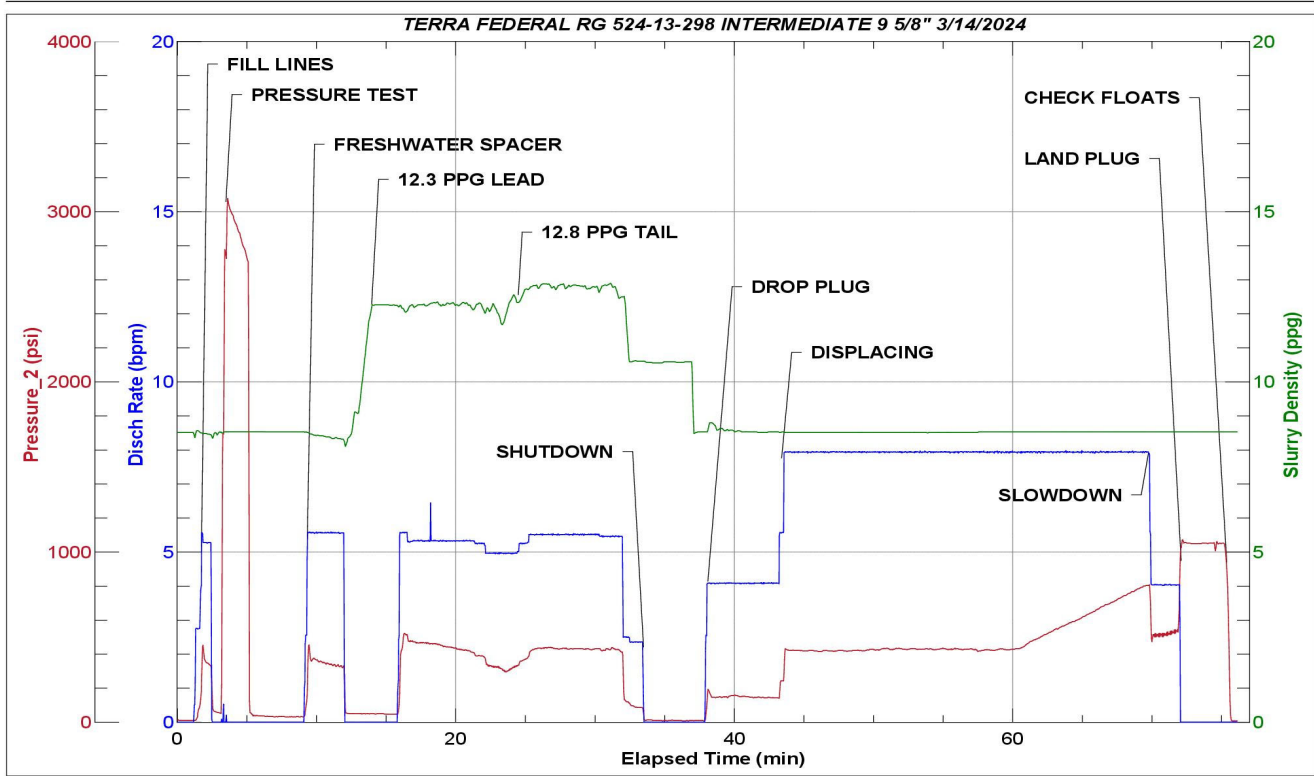
## Job Logs

Line	Event	Date (MM/DD/YY)	Time (HH:MM)	Density (lb/gal)	Pump Rate (bpm)	Pump Volume (bbls)	Pipe Pressure (psi)	Comment
1	Callout	3/14/2024	07:30					CREW CALLED OUT FOR LOCATION TIME OF 14:30 3/14/24
2	Depart Location	3/14/2024	12:15					CREW DEPARTS RCO YARD FOR RIG LOCATION
3	Arrive On Location	3/14/2024	13:40					CREW AND EQUIPMENT ARRIVED ON LOCATION. RIG IS PREPARING TO START RUNNING CASING
4	Rig Up Iron	3/14/2024	15:00					PRE-RIG UP MEETING / RIG UP IRON HOSES AND EQUIPMENT. ON STANDBY WAITING FOR CASING TO FINISH BEING RAN. CASING LANDED @ 20:30 RIG CIRCULATED 1 HOUR 480 BBLs
5	Safety Meeting	3/14/2024	21:00					PRE JOB SAFETY-MEETING WITH RIG CREW AND COMPANY MAN. FINISH RIGGING UP HEAD AND FLOOR AFTER SAFETY MEETING.
6	Fill Lines	3/14/2024	21:26	8.34	5	5	376	FILL LINES WITH 5 BBLs OF FRESHWATER
7	Pressure Test Lines	3/14/2024	21:28	8.34	1	1	3064	PRESSURE TEST PUMP AND LINES TO 3000 PSI
8	Other	3/14/2024	21:34	8.34	5.6	15	390	PUMP 15 BBLs FRESHWATER SPACER
9	Pump Lead Cement	3/14/2024	21:41	12.3	5.3	0	483	BEGIN PUMPING 12.3 PPG, 2.31Y, 13.2MW LEAD CEMENT, WEIGHT VERIFIED BY MUD SCALE
10	Pump Lead Cement	3/14/2024	21:44	12.3	5.3	20	439	20 BBLs LEAD CEMENT PUMPED
11	Pump Lead Cement	3/14/2024	21:47	12.3	5	22	365	42 BBLs (102 SKS) LEAD CEMENT PUMPED
12	Pump Tail Cement	3/14/2024	21:47	12.8	5	0	370	BEGIN PUMPING 12.8 PPG, 2.03Y, 11.2MW TAIL CEMENT, WEIGHT VERIFIED BY MUD SCALE
13	Pump Tail Cement	3/14/2024	21:53	12.8	5.5	20	429	20 BBLs TAIL CEMENT PUMPED
14	Pump Tail Cement	3/14/2024	21:58	12.8	3	25	110	45 BBLs (125 SKS) TAIL CEMENT PUMPED FULL RETURNS.
15	Drop Top Plug	3/14/2024	22:03	8.34	4	0	229	DROP PLUG, WITNESSED BY COMPANY MAN. BEGIN PUMPING FRESHWATER DISPLACEMENT
16	Pump Displacement	3/14/2024	22:11	8.34	8	50	463	50 BBLs DISPLACEMENT PUMPED.
17	Pump Displacement	3/14/2024	22:18	8.34	8	50	478	100 BBLs DISPLACEMENT PUMPED.
18	Pump Displacement	3/14/2024	22:24	8.34	8	50	479	150 BBLs DISPLACEMENT PUMPED.
19	Pump Displacement	3/14/2024	22:30	8.34	8	50	697	200 BBLs DISPLACEMENT PUMPED. MAX LIFT- 834 PSI @ 8 BPM BEFORE SLOWDOWN @ 230 BBLs
20	Pump Displacement	3/14/2024	22:37	8.34	4	40	560	240 BBLs (CALCULATED) TOTAL DISPLACEMENT PUMPED
21	Land Plug	3/14/2024	22:37				1060	PLUG LANDED. FCP-560 PSI BUMP TO-1060 PSI
22	Check Floats	3/14/2024	22:40			1		BLEED OFF PRESSURE-CHECK FLOATS, FLOATS HELD 1 BBL BACK
23	End Job	3/14/2024	22:40					END JOB.
24	Safety Meeting	3/14/2024	22:50					PRE-RIG DOWN SAFETY MEETING
25	Rig Down Iron	3/14/2024	23:00					RIG DOWN EQUIPMENT, IRON AND HOSES
26	Depart Location	3/15/2024	00:15					CREW DEPARTS LOCATION FOR RCO YARD

# Pump Diagrams



JobMaster Program Version 5.01C1  
 Job Number: 90717  
 Customer: TERRA  
 Well Name: FEDERAL RG 524-13-298



Job Start: Thursday, March 14, 2024