



Terra Energy Partners, LLC

SURFACE POST JOB REPORT

FED RG 313-18-297 05-103-12572
S:13 T:2S R:98W Rio Blanco CO

CallSheet #: 90563
Proposal #: 74574



SURFACE Post Job Report

Attention: Mr. Dustin Childers | (936) 524-8828 | dchilders@terraep.com
Terra Energy Partners, LLC
4828 Loop Central Dr., Suite 900 | Houston, TX 77081

Dear Mr. Dustin Childers,

Thank you for the opportunity to provide cementing services on this well. American Cementing strives to achieve complete customer satisfaction. If you have any questions regarding the services or data provided, please contact American Cementing at any time.

Sincerely,

Addison Kneale

Lab Technician II | (904) 228-9560 | addison.kneale@americacementing.com

Field Office 28730 US-6, Rifle, CO 81650
Phone: (970) 657-1187

Job Details & Summary

Geometry

Type	Function	OD (in)	ID (in)	Weight (lb/ft)	Thread	Top (ft)	Bottom (ft)	Excess (%)
Casing	Outer	20	19.5	53	n/a	0	114	0
Open Hole	Outer	n/a	17.5	n/a	n/a	80	1406	5
Casing	Inner	13.375	12.615	54.5	n/a	0	1410.08	0

Equipment / People

Unit Type	Unit	Power Unit	Employee #1
Field Storage Silo	FSS-438		
Cement Trailer Float	CTF-007	TRC-112	Daniel Balint
Light Duty Vehicles	LDV-128		Gerron McClure
Cement Pump Float	CPF-012		

Timing

Event	Date/Time
ERTS	03/05/2024 02:00
Call Out	3/4/2024 17:00
Depart Facility	3/4/2024 22:00
On Location	3/5/2024 02:00
Rig Up Iron	3/5/2024 03:00
Job Started	3/5/2024 04:43
Job Completed	3/5/2024 06:54
Rig Down Iron	3/5/2024 07:50
Depart Location	3/5/2024 08:00

General Job Information

Metrics	Value
Well Fluid Density	8.8 lb/gal
Well Fluid Type	WBM
Rig Circulation Vol	400.4 bbls
Rig Circulation Time	1 hours
Calculated Displacement	211.6 bbls
Actual Displacement	211 bbls
Total Spacer to Surface	20 bbls
Total CMT to Surface	45 bbls
Well Topped Out	No
Top Out Volume	N/A bbls

Job Details

Metrics	Value
Well Full Prior to Job	Yes
Well Fluid Density Into Well	8.8 lb/gal
Well Fluid Density Out of Well	8.8 lb/gal

Job Details (cont.)

Metrics	Value
BHCT	84 °F
BHST	102 °F

Water Analysis

Metrics	Value	Recommended
Water Source	None	
Temperature	68 °F	50-80 °F
pH Level	6	5.5-8.5
Chlorides	200 mg/L	0-3000 mg/L
Total Alkalinity	100	0-1000
Total Hardness	10 mg/L	0-500 mg/L
Carbonates	10 mg/L	0-100 mg/L
Sulfates	100 mg/L	0-1500 mg/L
Potassium	200 mg/L	0-3000 mg/L
Iron	10 mg/L	0-300 mg/L

Circulation

Lost Circulation Experienced
No

Job Execution Information

Fluid	Product	Function	Density (lb/gal)	Yield (ft ³ /sk)	Water Rq. (gal/sk)	Water Rq. (gal/bbl)	Volume (sks)	Volume (bbl)	Designed Top (ft)
1	Water	Flush	8.34			42.00		20.00	0
2	Lead	Lead	12.30	2.31	13.16		460.00	189.17	0
3	Water	DisplacementFinal	8.34			42.00		211.60	0

Job Fluid Details

Fluid	Type	Fluid	Product	Function	Conc.	Uom
2	Lead	Lead	ASTM TYPE IL	Cement	100.00	%
2	Lead	Lead	A-10	Accelerator	5.00	%BWOB
2	Lead	Lead	A-2	Accelerator	3.00	lb/sk
2	Lead	Lead	A-7P	Accelerator	2.00	lb/sk
2	Lead	Lead	IntegraSeal POLI	LostCirculation	0.25	lb/sk
2	Lead	Lead	STATIC FREE	Other	0.01	lb/sk
2	Lead	Lead	XCem-308	Defoamer	0.30	%BWOB

Job Logs

Line	Event	Date (MM/DD/YY)	Time (HH:MM)	Density (lb/gal)	Pump Rate (bpm)	Pump Volume (bbls)	Pipe Pressure (psi)	Comment
1	ARRIVED ON LOCATION	3/5/2024	02:00					ARRIVED ON LOCATION PER CUSTOMER REQUEST 02:00
2	HAZARD ASSESEMENT	3/5/2024	02:05					
3	SPOT EQUIPMENT	3/5/2024	02:10					
4	PRE RIG UP SAFETY MEETING	3/5/2024	02:15					
5	RIGGED UP	3/5/2024	03:00					
6	PRE JOB SAFETY MEETING	3/5/2024	04:25					
7	STAB CEMENT HEAD	3/5/2024	04:30					
8	START JOB	3/5/2024	04:43					START JOB
9	PRESSURE TEST LINES 3000 PSI	3/5/2024	04:45	8.34	1	1	3000	PRESSURE TEST LINES 3000 PSI
10	20 BBL FRESH WATER SPACER	3/5/2024	04:49	8.34	6	20	457	20 BBL FRESH WATER SPACER
11	START 189.1 BBL PRIMARY SLURRY @ 12.3	3/5/2024	04:52	12.3	4	1	536	START 189.1 BBL PRIMARY SLURRY @ 12.3(2.31,13.16) 460 TOTAL SACKS
12	50 BBL GONE ON CEMENT	3/5/2024	05:01	12.3	6	50	550	
13	100 BBL GONE ON CEMENT	3/5/2024	05:09	12.3	6	100	521	
14	150 BBL GONE ON CEMENT	3/5/2024	05:17	12.3	6	150	500	
15	END OF PRIMARY SLURRY	3/5/2024	05:27	12.3	6	189.1	421	END OF PRIMARY SLURRY
16	SHUTDOWN/ DROP TOP PLUG	3/5/2024	05:28					SHUTDOWN/ DROP TOP PLUG
17	START 211.6 BBL FRESH WATER DISPLACEMENT	3/5/2024	05:29	8.34	4	1	224	START BBL FRESH WATER DISPLACEMENT
18	50 BBL GONE ON DISPLACEMENT	3/5/2024	05:37	8.34	6	50	334	CAUGHT CEMENT @ 23 bbls GONE ON DISPLACEMENT
19	100 BBL GONE ON DISPLACEMENT	3/5/2024	05:45	8.34	6	100	325	
20	150 BBL GONE ON DISPLACEMENT	3/5/2024	05:53	8.34	6	150	472	CIRCULATED 45 BBLs OR 109 SACKS CEMENT TO SURFACE -
21	PRESSURE BEFORE SHUTDOWN/ HESITATION	3/5/2024	06:01	8.34	6	201	542	PRESSURE BEFORE SHUTDOWN/ 10 MINUTE HESITATION
22	SHUTDOWN/ 10 MINUTE HESITATION	3/5/2024	06:01	8.34		201	221	SHUTDOWN 10 MINUTE HESITATION
23	2BPM LAST 10 BBL DISPLACEMENT	3/5/2024	06:11	8.34	2	201	301	
24	FINAL LIFT PRESSURE TO LAND PLUG	3/5/2024	06:17	8.34	2	211.6	313	FINAL LIFT PRESSURE TO LAND PLUG - 313
25	LAND PLUG	3/5/2024	06:17	8.34	2	211.6	851	LAND PLUG - 851
26	CASING TEST 30 MINUTES 1100 PSI	3/5/2024	06:19	8.34	1	1	1153	CASING TEST 30 MINUTES 1100 PSI - 1153
27	END OF CASING TEST	3/5/2024	06:54	8.34		1		END OF CASING TEST BEGINNING PSI- 1153 / ENDING PSI - 1139
28	CHECK FLOAT	3/5/2024	06:55					RETURNED 1 BBL BACK UPON FLOAT CHECK

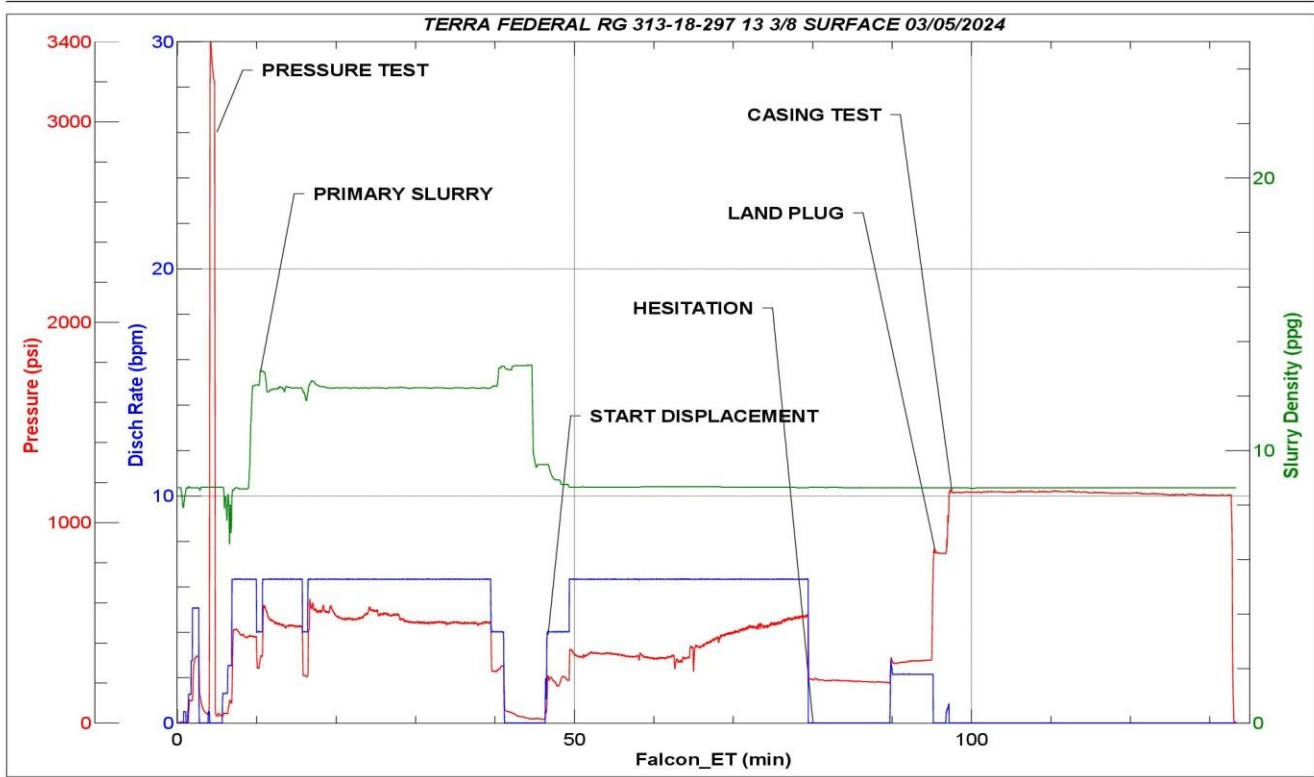


Line	Event	Date (MM/DD/YY)	Time (HH:MM)	Density (lb/gal)	Pump Rate (bpm)	Pump Volume (bbls)	Pipe Pressure (psi)	Comment
29	END OF CEMENTING SERVICES	3/5/2024	06:55					END OF CEMENTING SERVICES/ CIRCULATED 45 BBLs OR 109 SACKS CEMENT TO SURFACE
30	POST JOB SAFETY MEETING	3/5/2024	07:00					POST JOB/ PRE RIG DOWN SAFETY MEETING
31	RIGGED DOWN	3/5/2024	07:50					
32	PRE CONVOY SAFETY MEETING	3/5/2024	07:55					
33	LOCATION DEPARTURE	3/5/2024	08:00					
34	END OF JOB	3/5/2024	08:00					END OF JOB

Pump Diagrams



JobMaster Program Version 5.01C1
Job Number: 90563
Customer: TERRA
Well Name: FEDERAL RG 313-18 297



Job Start: Tuesday, March 05, 2024