



Terra Energy Partners, LLC

INTERMEDIATE POST JOB REPORT

FED RG 313-18-297 05-103-12572
S:13 T:2S R:98W Rio Blanco CO

CallSheet #: 91477
Proposal #: 76391



INTERMEDIATE Post Job Report

Attention: Mr. Dustin Childers | (936) 524-8828 | dchilders@terraep.com
Terra Energy Partners, LLC
4828 Loop Central Dr., Suite 900 | Houston, TX 77081

Dear Mr. Dustin Childers,

Thank you for the opportunity to provide cementing services on this well. American Cementing strives to achieve complete customer satisfaction. If you have any questions regarding the services or data provided, please contact American Cementing at any time.

Sincerely,

Addison Kneale

Field Engineer I | (904) 228-9560 | addison.kneale@americacementing.com

Field Office 28730 US-6, Rifle, CO 81650
Phone: (970) 657-1187

Job Details & Summary

Geometry

Type	Function	OD (in)	ID (in)	Weight (lb/ft)	Thread	Top (ft)	Bottom (ft)	Excess (%)
Casing	Outer	13.375	12.615	54.5	n/a	0	1363	0
Open Hole	Outer	n/a	12.25	n/a	n/a	1363	2600	50
Open Hole	Outer	n/a	12.25	n/a	n/a	2600	3125	50
Casing	Inner	9.625	8.921	36	n/a	0	3118	0

Equipment / People

Unit Type	Unit	Power Unit	Employee #1
Cement Trailer Float	CTF-280	TRC-425	Duewayne Jackson
Cement Pump Float	CPF-012	TRH-855	James Lujan
Light Duty Vehicles	LDV-128		Gerron McClure
Light Duty Vehicles	LDV-144		Darcy Belley

Timing

Event	Date/Time
ERTS	05/15/2024 14:00
Call Out	5/15/2024 09:00
Depart Facility	5/15/2024 12:00
On Location	5/15/2024 14:00
Rig Up Iron	5/15/2024 15:00
Job Started	5/15/2024 19:21
Job Completed	5/15/2024 20:24
Rig Down Iron	5/15/2024 21:00
Depart Location	5/15/2024 21:15

General Job Information

Metrics	Value
Well Fluid Density	9 lb/gal
Well Fluid Type	WBM
Rig Circulation Vol	425.3 bbls
Rig Circulation Time	1 hours
Calculated Displacement	237.5 bbls
Actual Displacement	237 bbls
Total Spacer to Surface	N/A bbls
Total CMT to Surface	N/A bbls
Well Topped Out	No
Top Out Volume	N/A bbls

Job Details

Metrics	Value
Well Full Prior to Job	Yes
Well Fluid Density Into Well	9 lb/gal
Well Fluid Density Out of Well	9 lb/gal

Job Details (cont.)

Metrics	Value
BHCT	87 °F
BHST	118 °F

Water Analysis

Metrics	Value	Recommended
Water Source	None	
Temperature	68 °F	50-80 °F
pH Level	6	5.5-8.5
Chlorides	100 mg/L	0-3000 mg/L
Total Alkalinity	100	0-1000
Total Hardness	10 mg/L	0-500 mg/L
Carbonates	10 mg/L	0-100 mg/L
Sulfates	100 mg/L	0-1500 mg/L
Potassium	200 mg/L	0-3000 mg/L
Iron	10 mg/L	0-300 mg/L

Circulation

Lost Circulation Experienced
No

Job Execution Information

Fluid	Product	Function	Density (lb/gal)	Yield (ft ³ /sk)	Water Rq. (gal/sk)	Water Rq. (gal/bbl)	Volume (sks)	Volume (bbl)	Designed Top (ft)
1	Water	Flush	8.34			42.00		20.00	1861
2	Lead	Lead	12.30	2.31	13.17		102.00	41.95	2100
3	Tail	Tail	12.80	2.03	11.16		125.00	45.28	2600
4	Water	DisplacementFinal	8.34			42.00		237.00	0

Job Fluid Details

Fluid	Type	Fluid	Product	Function	Conc.	Uom
2	Lead	Lead	ASTM TYPE IL	Cement	100.00	%
2	Lead	Lead	A-10	Accelerator	5.00	%BWOB
2	Lead	Lead	A-2	Accelerator	3.00	lb/sk
2	Lead	Lead	A-7P	Accelerator	2.00	lb/sk
2	Lead	Lead	IntegraSeal POLI	LostCirculation	0.25	lb/sk
2	Lead	Lead	STATIC FREE	Other	0.01	lb/sk
2	Lead	Lead	XCem-311	Defoamer	0.30	%BWOB
3	Tail	Tail	ASTM TYPE IL	Cement	100.00	%
3	Tail	Tail	A-10	Accelerator	5.00	%BWOB
3	Tail	Tail	A-2	Accelerator	2.00	lb/sk
3	Tail	Tail	A-7P	Accelerator	2.00	lb/sk
3	Tail	Tail	IntegraSeal POLI	LostCirculation	0.25	lb/sk
3	Tail	Tail	STATIC FREE	Other	0.01	lb/sk
3	Tail	Tail	XCem-311	Defoamer	0.30	%BWOB

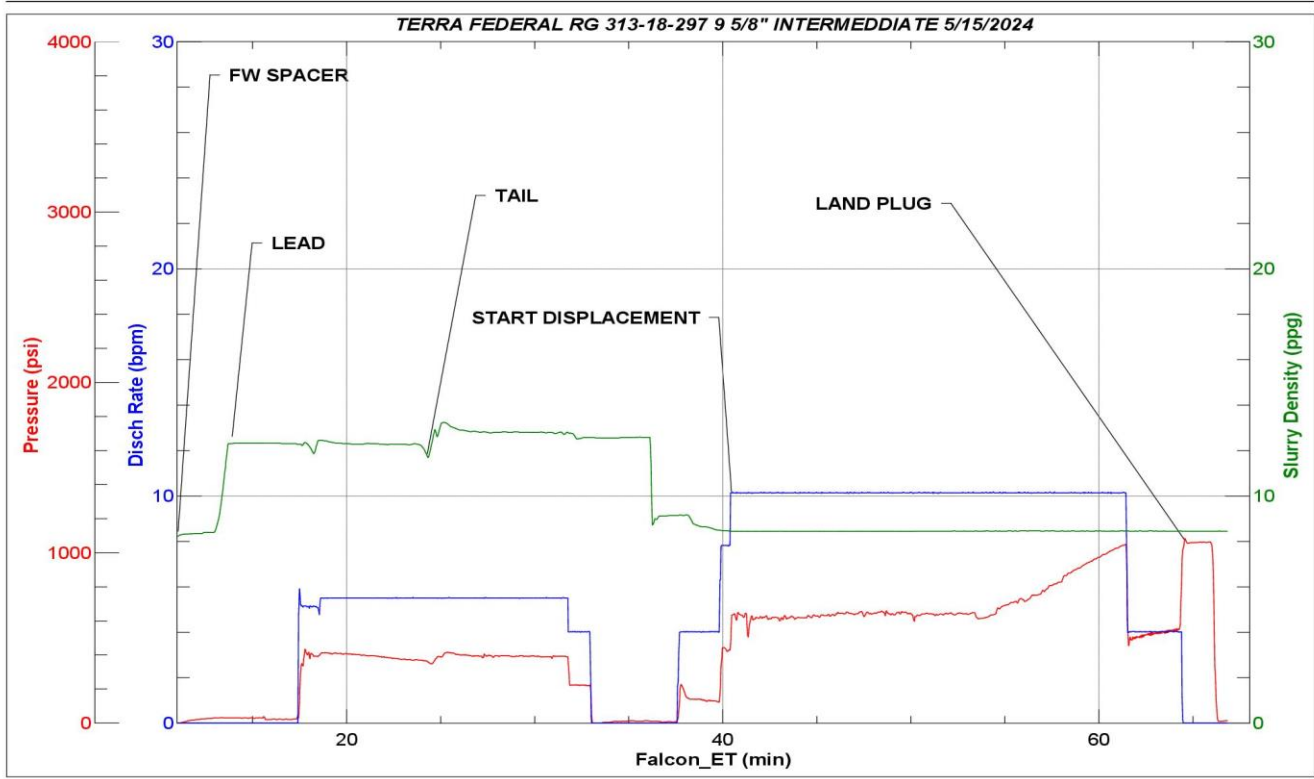
Job Logs

Line	Event	Date (MM/DD/YY)	Time (HH:MM)	Density (lb/gal)	Pump Rate (bpm)	Pump Volume (bbls)	Pipe Pressure (psi)	Comment
1	ARRIVED ON LOCATION	5/15/2024	14:00					ARRIVED ON LOACTION PER CUSTOMER REQUEST 14:00
2	HAZARD ASSESMENT	5/15/2024	14:05					
3	PRE RIG UP SAFETY MEETING	5/15/2024	14:10					
4	RIGGED UP	5/15/2024	15:00					
5	PRE JOB SAFETY MEETING	5/15/2024	18:30					
6	STAB CEMENT HEAD	5/15/2024	18:45					
7	START JOB	5/15/2024	19:21					START JOB
8	PRESSURE TEST LINES 3000	5/15/2024	19:25	8.34	1	1	3000	PRESSURE TEST LINES 3000 PSI
9	20 BBL FRESH WATER SPACER	5/15/2024	19:26	8.34	5	20	228	20 BBL FRESH WATER SPACER
10	START 42 BBL LEAD SLURRY @ 12.3	5/15/2024	19:33	12.3	4	1	220	START 42 BBL LEAD SLURRY @ 12.3 (2.31,13.17) 102 SACKS
11	END OF LEAD SLURRY	5/15/2024	19:44	12.3	4	42	380	END OF LEAD SLURRY
12	START 45 BBL TAIL SLURRY @ 12.8	5/15/2024	19:44	12.8	4	1	389	START 45 BBL TAIL SLURRY @ 12.8 (2.03,11.16) 125 SACKS
13	END OF TAIL SLURRY	5/15/2024	19:52	12.8	1	45	228	END OF TAIL SLURRY
14	SHUTDOWN/ DROP TOP PLUG	5/15/2024	19:53					SHUTDOWN/ DROP TOP PLUG
15	START 237.5 BBL FRESH WATER DISPLACEMENT	5/15/2024	19:57	8.34	4	1	223	START 237.5 BBL FRESH WATER DISPLACEMENT
16	50 BBL GONE ON DISPLACEMENT	5/15/2024	20:03	8.34	10	50	618	
17	100 BBL GONE ON DISPLACEMENT	5/15/2024	20:08	8.34	10	100	656	
18	150 BBL GONE ON DISPLACEMENT	5/15/2024	20:13	8.34	10	150	644	
19	200 BBL GONE ON DISPLACEMENT	5/15/2024	20:18	8.34	10	200	948	
20	PRESSURE BEFORE SLOWING RATE	5/15/2024	20:21	8.34	10	227	1041	PRESSURE BEFORE SLOWING RATE 1041
21	SLOW RATE PRESSURE	5/15/2024	20:21	8.34	4	227	510	SLOW RATE PRESSURE @ 4BPM - 510
22	PRESSURE BEFORE LANDING PLUG	5/15/2024	20:24	8.34	4	237.5	533	FINAL LIFT PRESSURE TO LAND PLUG -533
23	LAND PLUG	5/15/2024	20:24	8.34	4	237.5	1084	LAND PLUG - 1084
24	CHECK FLOAT	5/15/2024	20:29					RETURNED 1 BBLs BACK UPON FLOAT CHECK
25	END OF CEMENTING SERVICES	5/15/2024	20:30					END OF CEMENTING SERVICES
26	POST JOB SAFETY MEETING	5/15/2024	20:35					
27	RIGGED DOWN	5/15/2024	21:00					
28	PRE CONVOY SAFETY MEETING	5/15/2024	21:05					
29	LOCATION DEPARTURE	5/15/2024	21:10					
30	END OF JOB	5/15/2024	21:15					END OF JOB

Pump Diagrams



JobMaster Program Version 5.01C1
Job Number: 91477
Customer: TERRA
Well Name: FEDERAL RG 313-18 297



Job Start: Wednesday, May 15, 2024