



Terra Energy Partners, LLC

SURFACE POST JOB REPORT

FED RG 413-18-297 05-103-12578
S:13 T:2S R:98W Rio Blanco CO

CallSheet #: 90562
Proposal #: 74573



SURFACE Post Job Report

Attention: Mr. Dustin Childers | (936) 524-8828 | dchilders@terraep.com
Terra Energy Partners, LLC
4828 Loop Central Dr., Suite 900 | Houston, TX 77081

Dear Mr. Dustin Childers,

Thank you for the opportunity to provide cementing services on this well. American Cementing strives to achieve complete customer satisfaction. If you have any questions regarding the services or data provided, please contact American Cementing at any time.

Sincerely,

Krystal Schell

Field Engineer I | (719) 992-1830 | krystal.schell@americacementing.com

Field Office 28730 US-6, Rifle, CO 81650
Phone: (970) 657-1187

Job Details & Summary

Geometry

Type	Function	OD (in)	ID (in)	Weight (lb/ft)	Thread	Top (ft)	Bottom (ft)	Excess (%)
Casing	Outer	20	19.5	53	n/a	0	114	0
Open Hole	Outer	n/a	17.5	n/a	n/a	80	1366	5
Casing	Inner	13.375	12.615	54.5	n/a	0	1370.25	0

Equipment / People

Unit Type	Unit	Power Unit	Employee #1
Cement Trailer Float	CTF-108	TRC-112	Daniel Balint
Field Storage Silo	FSS-470		
Cement Pump Float	CPF-012		
Light Duty Vehicles	LDV-128		Gerron McClure

Timing

Event	Date/Time
ERTS	03/04/2024 03:00
Call Out	3/3/2024 21:00
Depart Facility	3/3/2024 22:00
On Location	3/4/2024 03:00
Rig Up Iron	3/4/2024 04:00
Job Started	3/4/2024 05:57
Job Completed	3/4/2024 08:20
Rig Down Iron	3/4/2024 09:00
Depart Location	3/4/2024 09:20

General Job Information

Metrics	Value
Well Fluid Density	8.8 lb/gal
Well Fluid Type	WBM
Rig Circulation Vol	388 bbls
Rig Circulation Time	1 hours
Calculated Displacement	205.3 bbls
Actual Displacement	205 bbls
Total Spacer to Surface	20 bbls
Total CMT to Surface	60 bbls
Well Topped Out	No
Top Out Volume	N/A bbls

Job Details

Metrics	Value
Flare Prior to Job	No
Flare Prior to Job	N/A units
Flare During Job	No
Flare During Job	N/A units
Flare at End of Job	No
Flare at End of Job	N/A units
Well Full Prior to Job	Yes
Well Fluid Density Into Well	8.8 lb/gal
Well Fluid Density Out of Well	8.8 lb/gal

Job Details (cont.)

Metrics	Value
BHCT	84 °F
BHST	102 °F

Water Analysis

Metrics	Value	Recommended
Water Source	None	
Temperature	69 °F	50-80 °F
pH Level	6	5.5-8.5
Chlorides	100 mg/L	0-3000 mg/L
Total Alkalinity	100	0-1000
Total Hardness	10 mg/L	0-500 mg/L
Carbonates	10 mg/L	0-100 mg/L
Sulfates	100 mg/L	0-1500 mg/L
Potassium	200 mg/L	0-3000 mg/L
Iron	10 mg/L	0-300 mg/L

Circulation

Lost Circulation Experienced
No

Job Execution Information

Fluid	Product	Function	Density (lb/gal)	Yield (ft ³ /sk)	Water Rq. (gal/sk)	Water Rq. (gal/bbl)	Volume (sks)	Volume (bbl)	Designed Top (ft)
1	Water	Flush	8.34			42.00		20.00	0
2	Lead	Lead	12.30	2.31	13.16		459.00	188.76	0
3	Water	DisplacementFinal	8.34			42.00		205.30	0

Job Fluid Details

Fluid	Type	Fluid	Product	Function	Conc.	Uom
2	Lead	Lead	ASTM TYPE IL	Cement	100.00	%
2	Lead	Lead	A-10	Accelerator	5.00	%BWOB
2	Lead	Lead	A-2	Accelerator	3.00	lb/sk
2	Lead	Lead	A-7P	Accelerator	2.00	lb/sk
2	Lead	Lead	IntegraSeal POLI	LostCirculation	0.25	lb/sk
2	Lead	Lead	STATIC FREE	Other	0.01	lb/sk
2	Lead	Lead	XCem-308	Defoamer	0.30	%BWOB

Job Logs

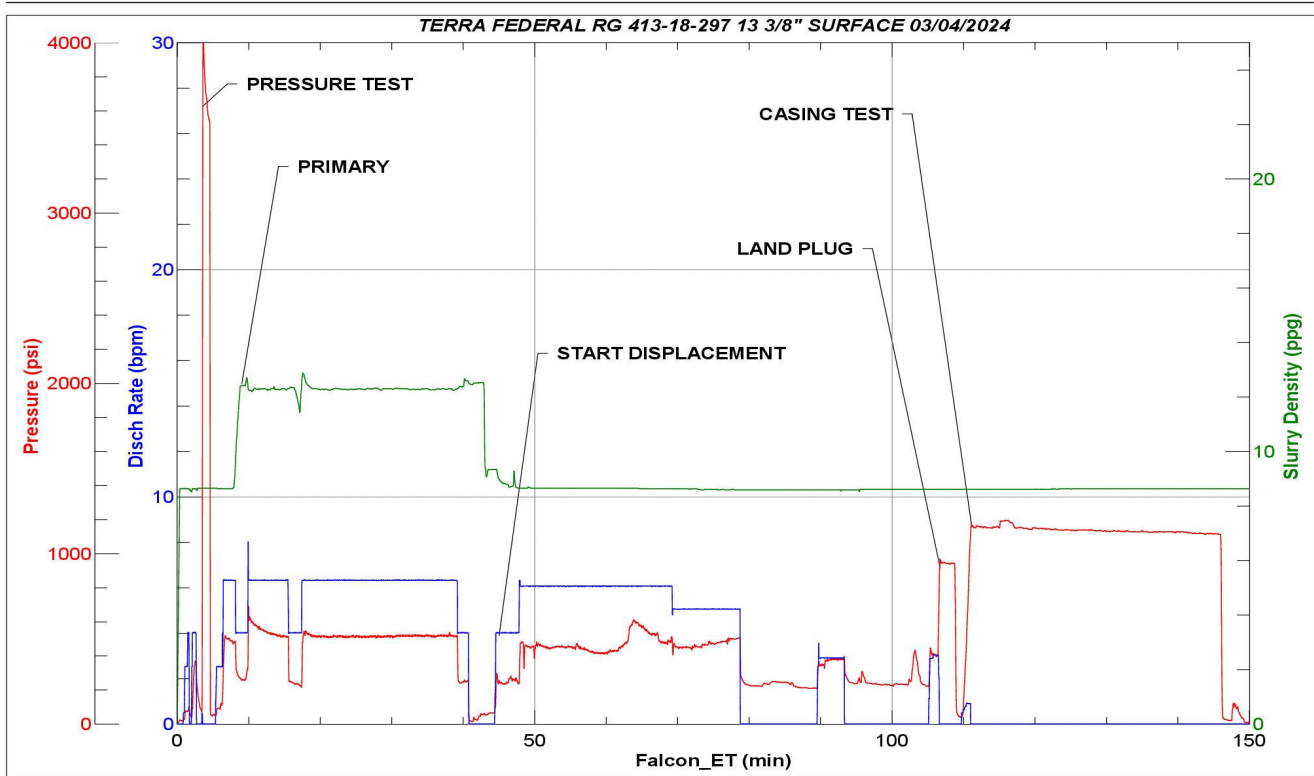
Line	Event	Date (MM/DD/YY)	Time (HH:MM)	Density (lb/gal)	Pump Rate (bpm)	Pump Volume (bbls)	Pipe Pressure (psi)	Comment
1	ARRIVED ON LOCATION	3/4/2024	03:00					ARRIVED ON LOCATION PER CUSTOMER REQUEST 03:00
2	HAZARD ASSESMENT	3/4/2024	03:05					
3	SPOT EQUIPMENT	3/4/2024	03:10					
4	PRE RIG UP SAFETY MEETING	3/4/2024	03:15					
5	RIGGED UP	3/4/2024	04:00					
6	PRE JOB SAFETY MEETING	3/4/2024	05:30					
7	STAB HEAD	3/4/2024	05:45					
8	START JOB	3/4/2024	05:57					START JOB
9	PRESSURE TEST LINES 3000	3/4/2024	05:59	8.34	1	1	3000	PRESSURE TEST LINES 3000 PSI
10	20 BBL FRESH WATER SPACER	3/4/2024	06:00	8.34	6	20	500	20 BBL FRESH WATER SPACER
11	START PRIMARY CEMENT @ 12.3	3/4/2024	06:04	12.3	6	1	580	START 188.8 BBL PRIMARY CEMENT SLURRY @ 12.3 (2.31, 13.16) 459 TOTAL SACKS
12	50 BBL GONE ON CEMENT	3/4/2024	06:13	12.3	6	50	513	
13	100 BBL GONE ON CEMENT	3/4/2024	06:22	12.3	6	100	520	
14	150 BBL GONE ON CEMENT	3/4/2024	06:30	12.3	6	150	521	
15	END OF PRIMARY CEMENT	3/4/2024	06:37	12.3	4	188.8	426	END OF PRIMARY CEMENT
16	SHUTDOWN/ DROP TOP PLUG	3/4/2024	06:38					SHUTDOWN/ DROP TOP PLUG
17	START 205.3 BBL FRESH WATER DISPLACEMENT	3/4/2024	06:39	8.34	4	1	236	START 205.3 BBL FRESH WATER DISPLACEMENT
18	CAUGHT CEMENT	3/4/2024	06:44	8.34	6	26	408	CAUGHT CEMENT @26 BBL DISPLACEMENT GONE
19	50 BBL GONE ON DISPLACEMENT	3/4/2024	06:47	8.34	6	50	488	
20	100 BBL GONE ON DISPLACEMENT	3/4/2024	06:53	8.34	6	100	477	CEMENT TO SURFACE @ 145 BBLS GONE. CIRCULAED 146 SKS OR 60 BBLS TO SURFACE
21	150 BBL GONE ON DISPLACEMENT	3/4/2024	07:04	8.34	5	150	450	
22	PRESSURE BEFORE SHUTDOWN/ HESITATE 10 MINUTES	3/4/2024	07:14	8.34	5	190	509/236	PRESSURE BEFORE SHUTDOWN HESITATION - 509/236
23	PRESSURE BEFORE SHUTDOWN/ HESITATE 10 MINUTES	3/4/2024	07:24	8.34	3	200	347/241	SHUTDOWN/ WAIT FOR 10 MINUTE DISPLACEMENT HESITATION - 347/241
24	RESUME DISPLACEMENT 3BPM FOR LAST 5 BBLS	3/4/2024	07:38	8.34	2	200	410	RESUME DISPLACEMENT AFTER 10 MINUTE HESITATION
25	PRESSURE BEFORE LANDING PLUG	3/4/2024	07:41	8.34	2	205.3	422	FINAL LIFT PRESSURE TO LAND PLUG - 422
26	LAND PLUG	3/4/2024	07:41	8.34	2	205.3	945	LAND PLUG- 945
27	CHECK FLOAT	3/4/2024	07:46					RETURNED BBLS UPON FLOAT CHECK
28	CASING TEST 1100 PSI FOR 30 MINUTES	3/4/2024	07:46	8.34	1	1	1155	START 30 MINUTE CASING TEST 1100 PSI

Line	Event	Date (MM/DD/YY)	Time (HH:MM)	Density (lb/gal)	Pump Rate (bpm)	Pump Volume (bbls)	Pipe Pressure (psi)	Comment
29	END OF CASING TEST	3/4/2024	08:20	8.34			1139	END OF 30 MIN/ 1100 PSI CASING TEST - BEGINNING PSI - 1155 ENDING PSI - 1139
30	END OF CEMENTING SERVICES	3/4/2024	08:20					END OF CEMENTING SERVICES/ CIRCULATED 146 SKS OR 60 BBLs CEMENT TO SURFACE
31	POST JOB/ PRE RIG DOWN SAFETY MEETING	3/4/2024	08:25					
32	RIGGED DOWN	3/4/2024	09:00					
33	PRE CONVOY SAFETY MEETING	3/4/2024	09:15					
34	LOCATION DEPARTURE	3/4/2024	09:20					
35	END OF JOB	3/4/2024	09:20					END OF JOB

Pump Diagrams



JobMaster Program Version 5.01C1
 Job Number: 90562
 Customer: TERRA
 Well Name: FEDERAL 413-18 297



Job Start: Monday, March 04, 2024