



Terra Energy Partners, LLC

LONG STRING POST JOB REPORT

FED RG 413-18-297 05-103-12578
S:13 T:2S R:98W Rio Blanco CO

CallSheet #: 91560
Proposal #: 76549



LONG STRING Post Job Report

Attention: Mr. Dustin Childers | (936) 524-8828 | dchilders@terraep.com
Terra Energy Partners, LLC
4828 Loop Central Dr., Suite 900 | Houston, TX 77081

Dear Mr. Dustin Childers,

Thank you for the opportunity to provide cementing services on this well. American Cementing strives to achieve complete customer satisfaction. If you have any questions regarding the services or data provided, please contact American Cementing at any time.

Sincerely,

Addison Kneale

Field Engineer I | (904) 228-9560 | addison.kneale@americacementing.com

Field Office 28730 US-6, Rifle, CO 81650
Phone: (970) 657-1187

Job Details & Summary

Geometry

Type	Function	OD (in)	ID (in)	Weight (lb/ft)	Thread	Top (ft)	Bottom (ft)	Excess (%)
Casing	Outer	9.625	8.921	36	n/a	0	3130	0
Open Hole	Outer	n/a	8.75	n/a	n/a	3089	8163	45
Open Hole	Outer	n/a	8.75	n/a	n/a	8163	11962	45
Casing	Inner	4.5	4	11.6	n/a	0	11955.11	0

Timing

Event	Date/Time
ERTS	05/28/2024 11:00
Call Out	5/27/2024 07:00
Depart Facility	5/27/2024 09:00
On Location	5/27/2024 11:00
Rig Up Iron	5/27/2024 12:00
Job Started	5/27/2024 12:20
Job Completed	5/27/2024 14:57
Rig Down Iron	5/27/2024 15:30
Depart Location	5/27/2024 15:45

Equipment / People

Unit Type	Unit	Power Unit	Employee #1
Field Storage Silo	FSS-438		
Field Storage Silo	FSS-470		
Cement Trailer Float	CTF-280	TRC-059	Michael Hutchinson
Light Duty Vehicles	LDV-128		Gerron McClure
Cement Pump Float	CPF-053	TRH-1137	Jacob Kirchenwitz

General Job Information

Metrics	Value
Well Fluid Density	10.5 lb/gal
Well Fluid Type	WBM
Rig Circulation Vol	654.48 bbls
Rig Circulation Time	2 hours
Calculated Displacement	184.7 bbls
Actual Displacement	184 bbls
Total Spacer to Surface	N/A bbls
Total CMT to Surface	N/A bbls
Well Topped Out	No
Top Out Volume	N/A bbls

Job Details

Metrics	Value
Well Full Prior to Job	Yes
Well Fluid Density Into Well	10.1 lb/gal
Well Fluid Density Out of Well	10.1 lb/gal

Job Details (cont.)

Metrics	Value
BHCT	205 °F
BHST	270 °F

Water Analysis

Metrics	Value	Recommended
Water Source	None	
Temperature	68 °F	50-80 °F
pH Level	6	5.5-8.5
Chlorides	200 mg/L	0-3000 mg/L
Total Alkalinity	100	0-1000
Total Hardness	10 mg/L	0-500 mg/L
Carbonates	10 mg/L	0-100 mg/L
Sulfates	100 mg/L	0-1500 mg/L
Potassium	200 mg/L	0-3000 mg/L
Iron	10 mg/L	0-300 mg/L

Circulation

Lost Circulation Experienced
No

Job Execution Information

Fluid	Product	Function	Density (lb/gal)	Yield (ft ³ /sk)	Water Rq. (gal/sk)	Water Rq. (gal/bbl)	Volume (sks)	Volume (bbl)	Designed Top (ft)
1	Water	Flush	8.34			42.00		10.00	6481
2	Lead	Lead	12.70	2.13	11.42		755.00	286.25	6607
3	Tail	Tail	13.50	2.01	9.72		884.00	316.45	8163
4	Displacement	DisplacementFinal	8.34			42.00		184.70	0

Job Fluid Details

Fluid	Type	Fluid	Product	Function	Conc.	Uom
2	Lead	Lead	ASTM TYPE II	Cement	100.00	%
2	Lead	Lead	A-2	Accelerator	0.10	%BWOB
2	Lead	Lead	FL-66	FluidLoss	0.20	%BWOB
2	Lead	Lead	GW-86	Viscosifier	0.05	%BWOB
2	Lead	Lead	IntegraSeal PHENO	LostCirculation	3.00	lb/sk
2	Lead	Lead	IntegraSeal POLI	LostCirculation	0.25	lb/sk
2	Lead	Lead	R-3	Retarder	0.70	%BWOB
2	Lead	Lead	STATIC FREE	Other	0.01	lb/sk
2	Lead	Lead	XCem-1009	Extender	10.00	lb/sk
2	Lead	Lead	XCem-311	Defoamer	0.30	%BWOB
3	Tail	Tail	CLASS G	Cement	70.00	%
3	Tail	Tail	FLY ASH (POZZOLAN)	Extender	30.00	%
3	Tail	Tail	BENTONITE	Viscosifier	8.00	%BWOB
3	Tail	Tail	FL-24	FluidLoss	0.40	%BWOB
3	Tail	Tail	GW-86	Viscosifier	0.10	%BWOB
3	Tail	Tail	IntegraSeal PHENO	LostCirculation	3.00	lb/sk
3	Tail	Tail	R-3	Retarder	0.30	%BWOB
3	Tail	Tail	S-8	StrengthRetgression	26.00	%BWOB
3	Tail	Tail	XCem-311	Defoamer	0.30	%BWOB

Job Logs

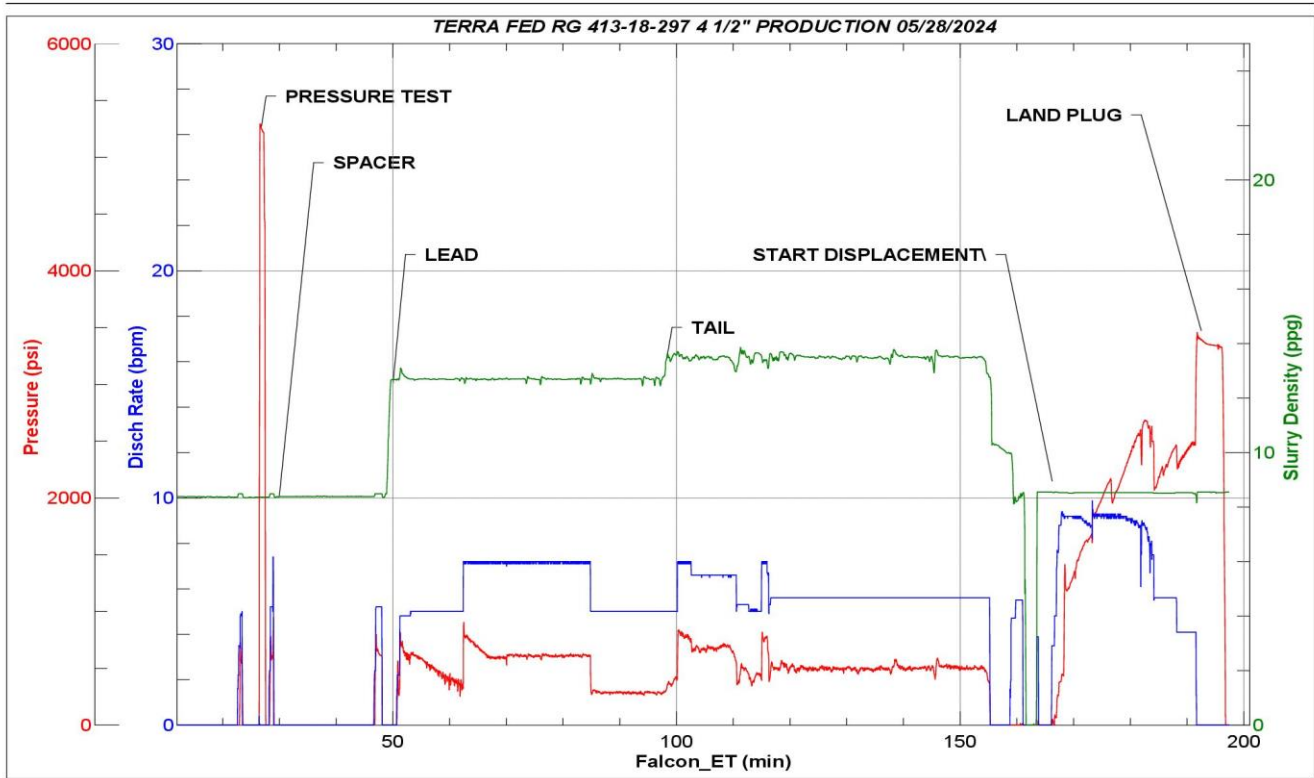
Line	Event	Date (MM/DD/YY)	Time (HH:MM)	Density (lb/gal)	Pump Rate (bpm)	Pump Volume (bbls)	Pipe Pressure (psi)	Comment
1	ARRIVED ON LOCATION	5/28/2024	11:00					ARRIVED ON LOCATION PER CUSTOMER REQUEST 11:00
2	HAZARD ASSESMENT	5/28/2024	11:05					
3	SPOT EQUIPMENT	5/28/2024	11:10					
4	PRE RIG UP SAFETY MEETING	5/28/2024	11:15					
5	RIGGED UP	5/28/2024	11:45					
6	PRE JOB SAFETY MEETING	5/28/2024	11:50					
7	STAB HEAD	5/28/2024	12:00					
8	START JOB	5/28/2024	12:20					START JOB
9	PRESSURE TEST LINES 5000	5/28/2024	12:25	8.34	1	1	5000	PRESSURE TEST LINES 5000 PSI
10	10 BBL FRESH WATER SPACER	5/28/2024	12:28	8.34	5	10	845	10 BBL FRESH WATER SPACER
11	START 286.4 BBL LEAD @ 12.7	5/28/2024	12:34	12.7	5	1	540	START 286.4 BBL LEAD SLURRY @ 12.7 (2.13,11.42) 755 TOTAL SACKS
12	50 BBL GONE ON LEAD	5/28/2024	12:48	12.7	5	50	870	
13	100 BBL GONE ON LEAD	5/28/2024	12:56	12.7	5	100	618	
14	150 BBL GONE ON LEAD	5/28/2024	13:02	12.7	5	150	605	
15	200 BBL GONE ON LEAD	5/28/2024	13:08	12.7	5	200	643	
16	250 BBL GONE ON LEAD	5/28/2024	13:18	12.7	5	250	349	
17	END OF LEAD SLURRY	5/28/2024	13:26	12.7	5	284.7	343	END OF LEAD SLURRY
18	START 316.4 BBL TAIL SLURRY @ 13.5	5/28/2024	13:26	13.5	4	1	508	START 316.4 BBL TAIL SLURRY @ 13.5 (2.01,9.72) 884 TOTAL SACKS
19	50 BBL GONE ON TAIL	5/28/2024	13:33	13.5	5	50	552	
20	100 BBL GONE ON TAIL	5/28/2024	13:41	13.5	5	100	539	
21	150 BBL GONE ON TAIL	5/28/2024	13:50	13.5	5	150	564	
22	200 BBL GONE ON TAIL	5/28/2024	13:08	13.5	5	200	487	
23	250 BBL GONE ON TAIL	5/28/2024	14:07	13.5	5	250	584	
24	300 BBL GONE ON TAIL	5/28/2024	14:16	13.5	5	300	577	
25	END OF TAIL SLURRY	5/28/2024	14:24	13.5	4	316.4	438	END OF TAIL SLURRY
26	SHUTDOWN/ WASH LINES/ DROP TOP PLUG	5/28/2024	14:24					SHUTDOWN/ WASH LINES/ DROP TOP PLUG
27	START BBL FRESH WATER DISPLACEMENT+ KCL ADD	5/28/2024	14:28	8.34	4	1	432	START BBL FRESH WATER DISPLACEMENT + KCL ADD
28	50 BBL GONE ON DISPLACEMENT	5/28/2024	14:38	8.34	10	50	1618	
29	100 BBL GONE ON DISPLACEMENT	5/28/2024	14:43	8.34	10	100	2118	
30	150 BBL GONE ON DISPLACEMENT	5/28/2024	14:48	8.34	10	150	2502	
31	PRESSURE BEFORE SLOWING RATE	5/28/2024	14:53	8.34	10	174	2433	PRESSURE BEFORE SLOWING RATE -2433
32	SLOW RATE PRESSURE	5/28/2024	14:53	8.34	4	174	2303	SLOW RATE PRESSURE @ 4BPM - 2303
33	PRESSURE BEFORE LANDING PLUG	5/28/2024	14:57	8.34	4	184	2471	FINAL LIFT PRESSURE TO LAND PLUG - 2471
34	LAND PLUG	5/28/2024	14:57	8.34	4	184	3424	LAND PLUG - 3424
35	CHECK FLOAT	5/28/2024	15:01	8.34				RETURNED 2.25 BBLs UPON FLOAT CHECK -
36	END OF CEMENTING SERVICES	5/28/2024	15:01					END OF CEMENTING SERVICES

Line	Event	Date (MM/DD/YY)	Time (HH:MM)	Density (lb/gal)	Pump Rate (bpm)	Pump Volume (bbls)	Pipe Pressure (psi)	Comment
37	POST JOB/ PRE RIG DOWN SAFETY MEETING	5/28/2024	15:05					
38	RIGGED DOWN	5/28/2024	15:30					
39	PRE CONVOY SAFETY MEETING	5/28/2024	15:35					
40	LOCATION DEPARTURE	5/28/2024	15:45					
41	END OF JOB	5/28/2024	15:45					END OF JOB

Pump Diagrams



JobMaster Program Version 5.01C1
Job Number: 91560
Customer: TERRA
Well Name: FED RG 413-18 297



Job Start: Tuesday, May 28, 2024