



Terra Energy Partners, LLC

INTERMEDIATE POST JOB REPORT

FED RG 413-18-297 05-103-12578
S:13 T:2S R:98W Rio Blanco CO

CallSheet #: 91558
Proposal #: 76548



INTERMEDIATE Post Job Report

Attention: Mr. Dustin Childers | (936) 524-8828 | dchilders@terraep.com
Terra Energy Partners, LLC
4828 Loop Central Dr., Suite 900 | Houston, TX 77081

Dear Mr. Dustin Childers,

Thank you for the opportunity to provide cementing services on this well. American Cementing strives to achieve complete customer satisfaction. If you have any questions regarding the services or data provided, please contact American Cementing at any time.

Sincerely,

Krystal Schell

Field Engineer I | (719) 992-1830 | krystal.schell@americacementing.com

Field Office 28730 US-6, Rifle, CO 81650
Phone: (970) 657-1187

Job Details & Summary

Geometry

Type	Function	OD (in)	ID (in)	Weight (lb/ft)	Thread	Top (ft)	Bottom (ft)	Excess (%)
Casing	Outer	13.375	12.615	54.5	n/a	0	1366	0
Open Hole	Outer	n/a	12.25	n/a	n/a	1366	2589	50
Open Hole	Outer	n/a	12.25	n/a	n/a	2589	3140	50
Casing	Inner	9.625	8.921	36	n/a	0	3130	0

Timing

Event	Date/Time
ERTS	05/22/2024 06:00
Call Out	5/22/2024 12:00
Depart Facility	5/22/2024 14:50
On Location	5/22/2024 16:45
Rig Up Iron	5/22/2024 17:00
Job Started	5/22/2024 22:00
Job Completed	5/22/2024 23:35
Rig Down Iron	5/23/2024 00:00
Depart Location	5/23/2024 00:45

Equipment / People

Unit Type	Unit	Power Unit	Employee #1
Cement Trailer Float	CTF-340	TRC-195	Devin Burton
Light Duty Vehicles	LDV-092		Collin Woronovitch
Cement Pump Float	CPF-012	TRH-855	Danny Ridgeway

General Job Information

Metrics	Value
Well Fluid Density	9 lb/gal
Well Fluid Type	WBM
Rig Circulation Vol	300 bbls
Rig Circulation Time	0.75 hours
Calculated Displacement	238 bbls
Actual Displacement	238 bbls
Total Spacer to Surface	0 bbls
Total CMT to Surface	0 bbls
Well Topped Out	N/A

Job Details

Metrics	Value
Flare Prior to Job	No
Flare Prior to Job	0 units
Flare During Job	No
Flare During Job	0 units
Flare at End of Job	No
Flare at End of Job	0 units
Well Full Prior to Job	Yes
Well Fluid Density Into Well	9 lb/gal
Well Fluid Density Out of Well	9 lb/gal

Job Details (cont.)

Metrics	Value
BHCT	87 °F
BHST	118 °F

Water Analysis

Metrics	Value	Recommended
Water Source	Upright Rig Tank	
Temperature	62 °F	50-80 °F
pH Level	7	5.5-8.5
Chlorides	80 mg/L	0-3000 mg/L
Total Alkalinity	100	0-1000
Total Hardness	80 mg/L	0-500 mg/L
Carbonates	N/A mg/L	0-100 mg/L
Sulfates	80 mg/L	0-1500 mg/L
Potassium	80 mg/L	0-3000 mg/L
Iron	0 mg/L	0-300 mg/L

Circulation

Lost Circulation Experienced

No

Job Execution Information

Fluid	Product	Function	Density (lb/gal)	Yield (ft ³ /sk)	Water Rq. (gal/sk)	Water Rq. (gal/bbl)	Volume (sks)	Volume (bbl)	Designed Top (ft)
1	Water	Flush	8.34			42.00		20.00	1850
2	Lead	Lead	12.30	2.31	13.17		102.00	41.95	2089
3	Tail	Tail	12.80	2.03	11.16		125.00	45.28	2589
4	Water	DisplacementFinal	8.34			42.00		238.30	0

Job Fluid Details

Fluid	Type	Fluid	Product	Function	Conc.	Uom
2	Lead	Lead	ASTM TYPE IL	Cement	100.00	%
2	Lead	Lead	A-10	Accelerator	5.00	%BWOB
2	Lead	Lead	A-2	Accelerator	3.00	lb/sk
2	Lead	Lead	A-7P	Accelerator	2.00	lb/sk
2	Lead	Lead	IntegraSeal POLI	LostCirculation	0.25	lb/sk
2	Lead	Lead	STATIC FREE	Other	0.01	lb/sk
2	Lead	Lead	XCem-311	Defoamer	0.30	%BWOB
3	Tail	Tail	ASTM TYPE IL	Cement	100.00	%
3	Tail	Tail	A-10	Accelerator	5.00	%BWOB
3	Tail	Tail	A-2	Accelerator	2.00	lb/sk
3	Tail	Tail	A-7P	Accelerator	2.00	lb/sk
3	Tail	Tail	IntegraSeal POLI	LostCirculation	0.25	lb/sk
3	Tail	Tail	STATIC FREE	Other	0.01	lb/sk
3	Tail	Tail	XCem-311	Defoamer	0.30	%BWOB

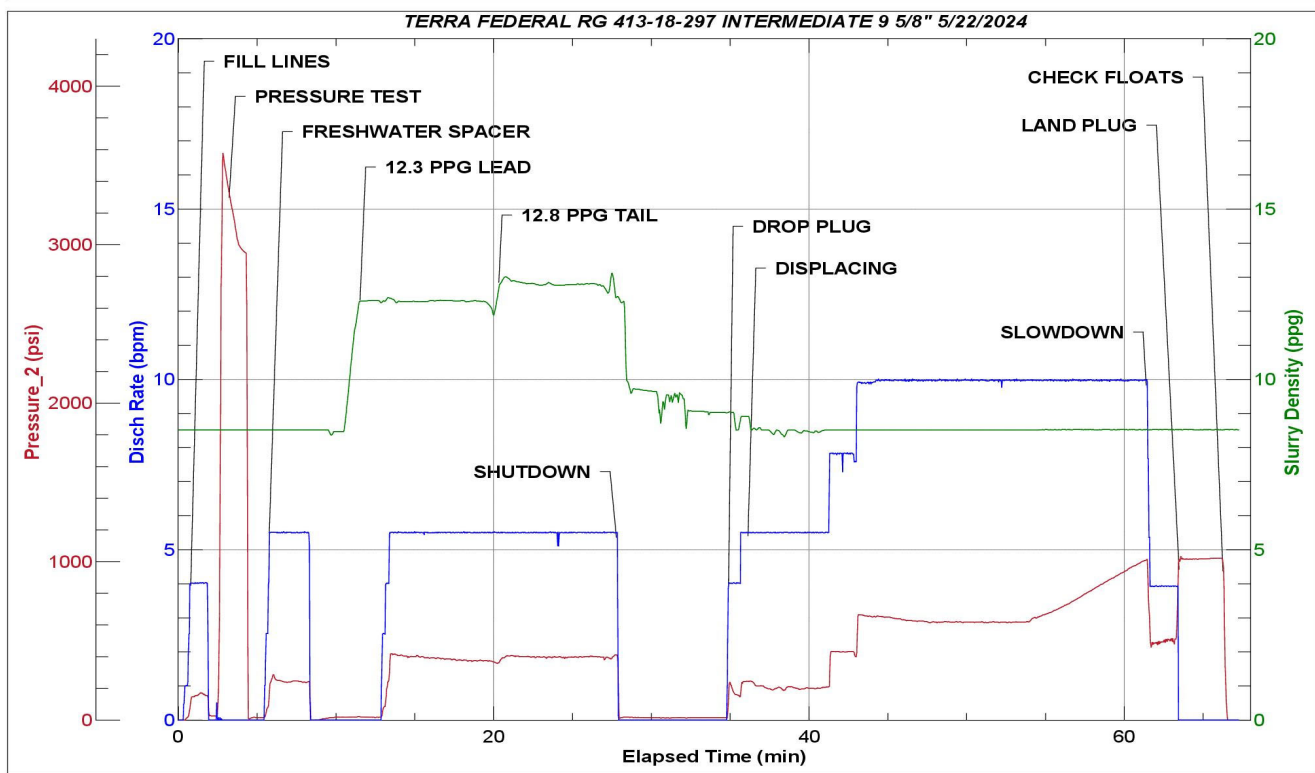
Job Logs

Line	Event	Date (MM/DD/YY)	Time (HH:MM)	Density (lb/gal)	Pump Rate (bpm)	Pump Volume (bbls)	Pipe Pressure (psi)	Comment
1	Callout	5/22/2024	12:00					CREW CALLED OUT FOR LOCATION TIME OF 18:00
2	Depart Location	5/22/2024	14:50					CREW DEPARTS RCO YARD FOR RIG LOCATION
3	Arrive On Location	5/22/2024	16:45					CREW AND EQUIPMENT ARRIVED ON LOCATION. RIG IS PREPARING TO START RUNNING CASING
4	Rig Up Iron	5/22/2024	17:00					PRE-RIG UP MEETING / RIG UP IRON HOSES AND EQUIPMENT. ON STANDBY WAITING FOR CASING TO FINISH BEING RAN. CASING LANDED @ 21:30 RIG CIRCULATED .75 HOUR 300 BBLs
5	Safety Meeting	5/22/2024	22:00					PRE JOB SAFTEY-MEETING WITH RIG CREW AND COMPANY MAN. FINISH RIGGING UP HEAD AND FLOOR AFTER SAFETY MEETING.
6	Fill Lines	5/22/2024	22:28	8.34	4	5	120	FILL LINES WITH 5 BBLs OF FRESHWATER
7	Pressure Test Lines	5/22/2024	22:30	8.34	1	1	3500	PRESSURE TEST PUMP AND LINES TO 3000 PSI
8	Other	5/22/2024	22:33	8.34	5.5	15	199	PUMP 15 BBLs FRESHWATER SPACER
9	Pump Lead Cement	5/22/2024	22:40	12.3	5.5	0	420	BEGIN PUMPING 12.3 PPG, 2.31Y, 13.2MW LEAD CEMENT, WEIGHT VERIFIED BY MUD SCALE
10	Pump Lead Cement	5/22/2024	22:44	12.3	5.5	20	394	20 BBLs LEAD CEMENT PUMPED
11	Pump Lead Cement	5/22/2024	22:48	12.3	5.5	22	382	42 BBLs (102 SKS) LEAD CEMENT PUMPED
12	Pump Tail Cement	5/22/2024	22:48	12.8	5.5	0	406	BEGIN PUMPING 12.8 PPG, 2.03Y, 11.2MW TAIL CEMENT, WEIGHT VERIFIED BY MUD SCALE
13	Pump Tail Cement	5/22/2024	22:51	12.8	5.5	20	401	20 BBLs TAIL CEMENT PUMPED
14	Pump Tail Cement	5/22/2024	22:56	12.8	5.5	25	396	45 BBLs (125 SKS) TAIL CEMENT PUMPED FULL RETURNS.
15	Drop Top Plug	5/22/2024	23:02	8.34	4	0	228	DROP PLUG, WITNESSED BY COMPANY MAN. BEGIN PUMPING FRESHWATER DISPLACEMENT
16	Pump Displacement	5/22/2024	23:11	8.34	10	50	625	50 BBLs DISPLACEMENT PUMPED.
17	Pump Displacement	5/22/2024	23:16	8.34	10	50	631	100 BBLs DISPLACEMENT PUMPED.
18	Pump Displacement	5/22/2024	23:21	8.34	10	50	642	150 BBLs DISPLACEMENT PUMPED.
19	Pump Displacement	5/22/2024	23:26	8.34	10	50	903	200 BBLs DISPLACEMENT PUMPED. MAX LIFT-1140 PSI @ 10 BPM BEFORE SLOWDOWN @ 228 BBLs
20	Pump Displacement	5/22/2024	23:31	8.34	4	38	540	238 BBLs (CALCULATED) TOTAL DISPLACEMENT PUMPED
21	Land Plug	5/22/2024	23:31				1031	PLUG LANDED. FCP-540 PSI BUMP TO-1031 PSI
22	Check Floats	5/22/2024	23:35			1		BLEED OFF PRESSURE-CHECK FLOATS, FLOATS HELD 1 BBL BACK
23	End Job	5/22/2024	23:35					END JOB.
24	Safety Meeting	5/22/2024	23:45					PRE-RIG DOWN SAFETY MEETING
25	Rig Down Iron	5/23/2024	00:00					RIG DOWN EQUIPMENT, IRON AND HOSES
26	Depart Location	5/23/2024	00:45					CREW DEPARTS LOCATION

Pump Diagrams



JobMaster Program Version 5.01C1
Job Number: 91558
Customer: TERRA
Well Name: FEDERAL RG 413-13-297



Job Start: Wednesday, May 22, 2024