



Terra Energy Partners, LLC

SURFACE POST JOB REPORT

FED RG 14-18-297 05-103-12576
S:13 T:2S R:98W Rio Blanco CO

CallSheet #: 90558
Proposal #: 74568



SURFACE Post Job Report

Attention: Mr. Dustin Childers | (936) 524-8828 | dchilders@terraep.com
Terra Energy Partners, LLC
4828 Loop Central Dr., Suite 900 | Houston, TX 77081

Dear Mr. Dustin Childers,

Thank you for the opportunity to provide cementing services on this well. American Cementing strives to achieve complete customer satisfaction. If you have any questions regarding the services or data provided, please contact American Cementing at any time.

Sincerely,

Krystal Schell

Field Engineer I | (719) 992-1830 | krystal.schell@americacementing.com

Field Office 28730 US-6, Rifle, CO 81650
Phone: (970) 657-1187

Job Details & Summary

Geometry

Type	Function	OD (in)	ID (in)	Weight (lb/ft)	Thread	Top (ft)	Bottom (ft)	Excess (%)
Casing	Outer	20	19.5	53	n/a	0	80	0
Open Hole	Outer	n/a	17.5	n/a	n/a	80	1380	20
Casing	Inner	13.375	12.615	54.5	n/a	0	1384.56	0

Equipment / People

Unit Type	Unit	Power Unit	Employee #1
Cement Trailer Float	CTF-576	TRC-112	Daniel Balint
Field Storage Silo	FSS-438		
Cement Pump Float	CPF-012	TRH-1137	Eric Brown
Light Duty Vehicles	LDV-128		Gerron McClure

Timing

Event	Date/Time
ERTS	03/01/2024 10:00
Call Out	3/1/2024 02:00
Depart Facility	3/1/2024 08:00
On Location	3/1/2024 10:00
Rig Up Iron	3/1/2024 11:15
Job Started	3/1/2024 15:00
Job Completed	3/1/2024 17:28
Rig Down Iron	3/1/2024 17:48
Depart Location	3/1/2024 18:35

General Job Information

Metrics	Value
Well Fluid Density	9 lb/gal
Well Fluid Type	WBM
Rig Circulation Vol	500 bbls
Rig Circulation Time	2 hours
Calculated Displacement	208 bbls
Actual Displacement	208 bbls
Total Spacer to Surface	20 bbls
Total CMT to Surface	36 bbls
Well Topped Out	No
Top Out Volume	N/A bbls

Job Details

Metrics	Value
Flare Prior to Job	No
Flare Prior to Job	N/A units
Flare During Job	No
Flare During Job	N/A units
Flare at End of Job	No
Flare at End of Job	N/A units
Well Full Prior to Job	Yes
Well Fluid Density Into Well	9 lb/gal
Well Fluid Density Out of Well	9 lb/gal

Job Details (cont.)

Metrics	Value
BHCT	84 °F
BHST	102 °F

Water Analysis

Metrics	Value	Recommended
Water Source	Upright Rig Tank	
Temperature	60 °F	50-80 °F
pH Level	6	5.5-8.5
Chlorides	200 mg/L	0-3000 mg/L
Total Alkalinity	100	0-1000
Total Hardness	10 mg/L	0-500 mg/L
Carbonates	10 mg/L	0-100 mg/L
Sulfates	100 mg/L	0-1500 mg/L
Potassium	200 mg/L	0-3000 mg/L
Iron	10 mg/L	0-300 mg/L

Circulation

Lost Circulation Experienced

No

Job Execution Information

Fluid	Product	Function	Density (lb/gal)	Yield (ft ³ /sk)	Water Rq. (gal/sk)	Water Rq. (gal/bbl)	Volume (sks)	Volume (bbl)	Designed Top (ft)
1	Water	Flush	8.34			42.00		20.00	0
2	Lead	Lead	12.30	2.31	13.16		516.00	212.20	0
3	Water	DisplacementFinal	8.34			42.00		208.00	0

Job Fluid Details

Fluid	Type	Fluid	Product	Function	Conc.	Uom
2	Lead	Lead	ASTM TYPE IL	Cement	100.00	%
2	Lead	Lead	A-10	Accelerator	5.00	%BWOB
2	Lead	Lead	A-2	Accelerator	3.00	lb/sk
2	Lead	Lead	A-7P	Accelerator	2.00	lb/sk
2	Lead	Lead	IntegraSeal POLI	LostCirculation	0.25	lb/sk
2	Lead	Lead	STATIC FREE	Other	0.01	lb/sk
2	Lead	Lead	XCem-308	Defoamer	0.30	%BWOB

Job Logs

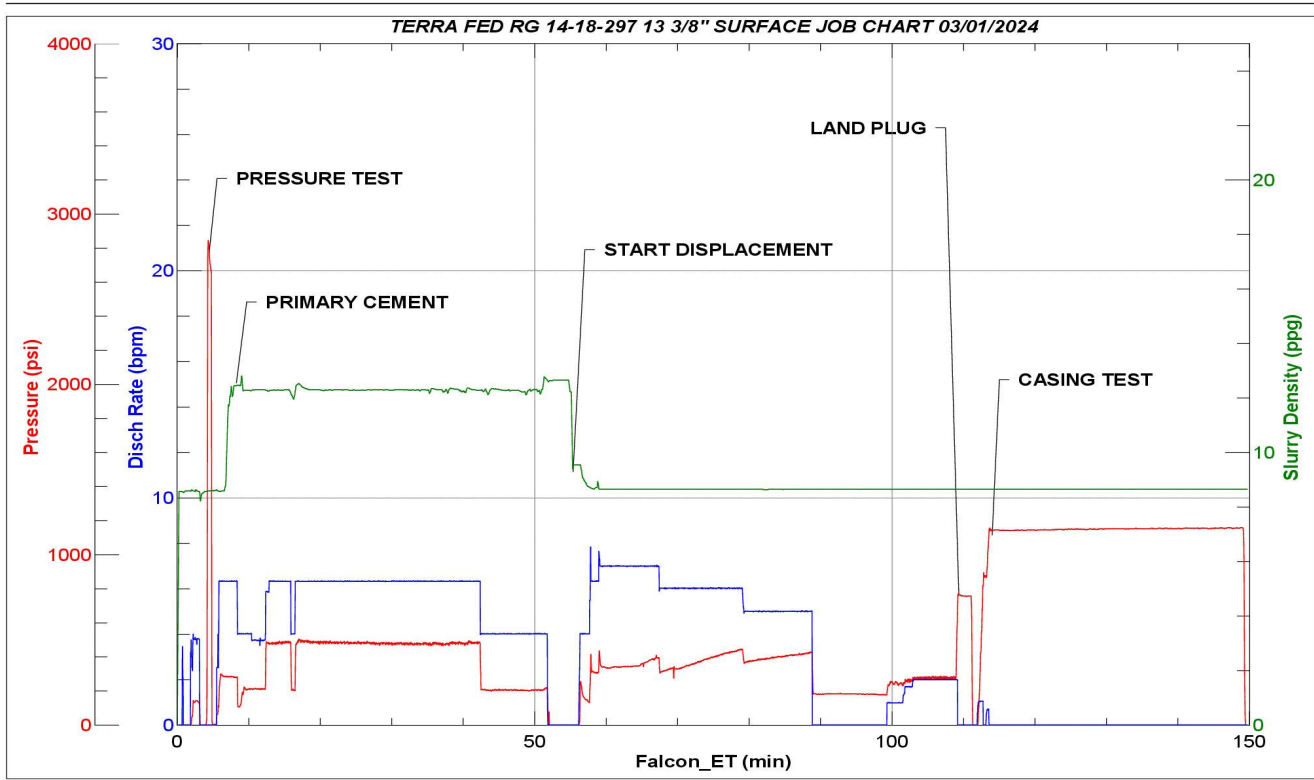
Line	Event	Date (MM/DD/YY)	Time (HH:MM)	Density (lb/gal)	Pump Rate (bpm)	Pump Volume (bbls)	Pipe Pressure (psi)	Comment
1	ARRIVE ON LOCATION	3/1/2024	10:00					ARRIVED ON LOCATION PER CUSTOMER REQUEST 1000
2	HAZARD ASSESSMENT	3/1/2024	10:05					
3	SPOT EQUIPMENT	3/1/2024	10:10					
4	PRERIG SAFETY MEETING	3/1/2024	10:15					
5	RIG UP IRON	3/1/2024	11:15					
6	STAB HEAD	3/1/2024	14:50					
7	START JOB	3/1/2024	15:00					START JOB
8	PRESSURE TEST LINES	3/1/2024	15:02	8.34	1	5	3000	PRESSURE TEST LINES 3000 PSI
9	20 BBLs FRESH WATER SPACER	3/1/2024	15:03	8.34	6	20	270	20 BBL FRESH WATER SPACER
10	START OF PRIMARY SLURRY	3/1/2024	15:06	12.3	6	1	270	START 212 PRIMARY CEMENT SLURRY 12.3 (2.31,13.16) 516 TOTAL SACKS
11	50 BBLs OF PRIMARY SLURRY	3/1/2024	15:18	12.3	6	50	434	
12	100 BBLs OF PRIMARY SLURRY	3/1/2024	15:26	12.3	6	100	482	
13	150 BBLs OF PRIMARY SLURRY	3/1/2024	15:34	12.3	6	150	479	
14	200 BBLs OF PRIMARY SLURRY	3/1/2024	15:42	12.3	6	200	485	
15	END OF PRIMARY SLURRY	3/1/2024	15:52	12.3	4	212	203	END OF 212 BBL PRIMARY CEMENT SLURRY
16	SHUT DOWN/DROP PLUG	3/1/2024	15:52					SHUT DOWN AND DROP TOP PLUG
17	START 208 BBL FRESH WATER DISPLACEMENT	3/1/2024	15:55	8.34	4	1	215	START OF 208 BBL FRESH WATER DISPLACEMENT
18	50 BBLs FRESH WATER DISPLACEMENT	3/1/2024	16:04	8.34	7	50	347	
19	100 BBLs FRESH WATER DISPLACEMENT	3/1/2024	16:12	8.34	6	100	356	
20	150 BBLs FRESH WATER DISPLACEMENT	3/1/2024	16:20	8.34	5	150	380	
21	PRESSURE BEFORE SHUT DOWN	3/1/2024	16:30	8.34	5	190	480	PRESSURE BEFORE SHUTTING DOWN 480 PSI
22	PRESSURE AFTER SHUT DOWN	3/1/2024	16:30	8.34	5	190	190	PRESSURE AFTER SHUT DOWN 190
23		3/1/2024	16:40					SHUT DOWN FOR 10 MINS TO ALLOW CEMENT TO FALL
24	PRESSURE TO LAND PLUG	3/1/2024	16:50	8.34	2	208	285	FINAL LIFT PRESSURE TO LAND THE PLUG 275 PSI
25	PLUG LANDED	3/1/2024	16:50	8.34	2	208	285	LANDED PLUG 775
26	CHECK FLOATS	3/1/2024	16:52					BBLs RETURNED UPON FLOAT CHECK 1 BBL
27	30 MIN CASING TEST	3/1/2024	16:54	8.34	2	1	1100	CASING TEST 1100 PSI FOR 30 MINS STARTED AT 1149 PSI AND BUILT TO 1163 PSI
28	END OF CEMENTING SERVICES	3/1/2024	17:28					END OF CEMENTING SERVICES/ CIRCULATED 132 BBLs TO SURFACE PIT

Line	Event	Date (MM/DD/YY)	Time (HH:MM)	Density (lb/gal)	Pump Rate (bpm)	Pump Volume (bbls)	Pipe Pressure (psi)	Comment
29	POST JOB RIG DOWN SAFETY MEETING	3/1/2024	17:38					
30	RIG DOWN IRON	3/1/2024	17:48					
31	PRECONVOY SAFETY MEETING	3/1/2024	18:30					
32	DEPART LOCATION	3/1/2024	18:35					
33	END JOB	3/1/2024	18:35					END JOB

Pump Diagrams



JobMaster Program Version 5.01C1
 JobNumber:90558
 Customer:TERRA
 Well Name: FEDERAL RG 14-18 298



Job Start: Friday, March 01, 2024