



Terra Energy Partners, LLC

LONG STRING POST JOB REPORT

FED RG 14-18-297 05-103-12576
S:13 T:2S R:98W Rio Blanco CO

CallSheet #: 91766
Proposal #: 76820



LONG STRING Post Job Report

Attention: Mr. Dustin Childers | (936) 524-8828 | dchilders@terraep.com
Terra Energy Partners, LLC
4828 Loop Central Dr., Suite 900 | Houston, TX 77081

Dear Mr. Dustin Childers,

Thank you for the opportunity to provide cementing services on this well. American Cementing strives to achieve complete customer satisfaction. If you have any questions regarding the services or data provided, please contact American Cementing at any time.

Sincerely,

Krystal Schell

Field Engineer I | (719) 992-1830 | krystal.schell@americacementing.com

Field Office 28730 US-6, Rifle, CO 81650
Phone: (970) 657-1187

Job Details & Summary

Geometry

Type	Function	OD (in)	ID (in)	Weight (lb/ft)	Thread	Top (ft)	Bottom (ft)	Excess (%)
Casing	Outer	9.625	8.921	36	n/a	0	3116	0
Open Hole	Outer	n/a	8.75	n/a	n/a	3116	8104	45
Open Hole	Outer	n/a	8.75	n/a	n/a	8104	11880	45
Casing	Inner	4.5	4	11.6	n/a	0	11874	0

Equipment / People

Unit Type	Unit	Power Unit	Employee #1
Cement Trailer Float	CTF-161	TRC-769	Travis Ballard
Field Storage Silo	FSS-438		
Field Storage Silo	FSS-470		
Light Duty Vehicles	LDV-147		Eric Brown
Cement Pump Float	CPF-058	TRH-677	Jeremy Bradbrook

Timing

Event	Date/Time
ERTS	06/09/2024 16:00
Call Out	6/9/2024 12:00
Depart Facility	6/9/2024 14:00
On Location	6/9/2024 16:00
Rig Up Iron	6/9/2024 16:30
Job Started	6/9/2024 18:31
Job Completed	6/9/2024 21:32
Rig Down Iron	6/9/2024 22:30
Depart Location	6/9/2024 23:00

General Job Information

Metrics	Value
Well Fluid Density	9.8 lb/gal
Well Fluid Type	WBM
Rig Circulation Vol	800 bbls
Rig Circulation Time	1.5 hours
Calculated Displacement	183 bbls
Actual Displacement	183 bbls
Total Spacer to Surface	0 bbls
Total CMT to Surface	0 bbls
Well Topped Out	No
Top Out Volume	N/A bbls

Job Details

Metrics	Value
Flare Prior to Job	No
Flare Prior to Job	N/A units
Flare During Job	No
Flare During Job	N/A units
Flare at End of Job	No
Flare at End of Job	N/A units
Well Full Prior to Job	Yes
Well Fluid Density Into Well	9.8 lb/gal
Well Fluid Density Out of Well	9.8 lb/gal

Job Details (cont.)

Metrics	Value
BHCT	205 °F
BHST	269 °F

Water Analysis

Metrics	Value	Recommended
Water Source	Upright Rig Tank	
Temperature	69 °F	50-80 °F
pH Level	8	5.5-8.5
Chlorides	0 mg/L	0-3000 mg/L
Total Alkalinity	240	0-1000
Total Hardness	425 mg/L	0-500 mg/L
Carbonates	10 mg/L	0-100 mg/L
Sulfates	<200 mg/L	0-1500 mg/L
Potassium	0 mg/L	0-3000 mg/L
Iron	0 mg/L	0-300 mg/L

Circulation

Lost Circulation Experienced
No

Job Execution Information

Fluid	Product	Function	Density (lb/gal)	Yield (ft ³ /sk)	Water Rq. (gal/sk)	Water Rq. (gal/bbl)	Volume (sks)	Volume (bbl)	Designed Top (ft)
1	Water	Flush	8.34			42.00		10.00	6481
2	Lead	Lead	12.70	2.13	11.42		749.00	283.97	6607
3	Tail	Tail	13.50	2.01	9.72		884.00	316.45	8104
4	Displacement	DisplacementFinal	8.34			42.00		183.00	0

Job Fluid Details

Fluid	Type	Fluid	Product	Function	Conc.	Uom
2	Lead	Lead	ASTM TYPE IL	Cement	100.00	%
2	Lead	Lead	A-2	Accelerator	0.10	%BWOB
2	Lead	Lead	FL-66	FluidLoss	0.20	%BWOB
2	Lead	Lead	GW-86	Viscosifier	0.05	%BWOB
2	Lead	Lead	IntegraSeal PHENO	LostCirculation	3.00	lb/sk
2	Lead	Lead	IntegraSeal POLI	LostCirculation	0.25	lb/sk
2	Lead	Lead	R-3	Retarder	0.70	%BWOB
2	Lead	Lead	STATIC FREE	Other	0.01	lb/sk
2	Lead	Lead	XCem-1009	Extender	10.00	lb/sk
2	Lead	Lead	XCem-311	Defoamer	0.30	%BWOB
3	Tail	Tail	CLASS G	Cement	70.00	%
3	Tail	Tail	FLY ASH (POZZOLAN)	Extender	30.00	%
3	Tail	Tail	BENTONITE	Viscosifier	8.00	%BWOB
3	Tail	Tail	FL-24	FluidLoss	0.40	%BWOB
3	Tail	Tail	GW-86	Viscosifier	0.10	%BWOB
3	Tail	Tail	IntegraSeal PHENO	LostCirculation	3.00	lb/sk
3	Tail	Tail	R-3	Retarder	0.30	%BWOB
3	Tail	Tail	S-8	StrengthRetgression	26.00	%BWOB
3	Tail	Tail	XCem-311	Defoamer	0.30	%BWOB

Job Logs

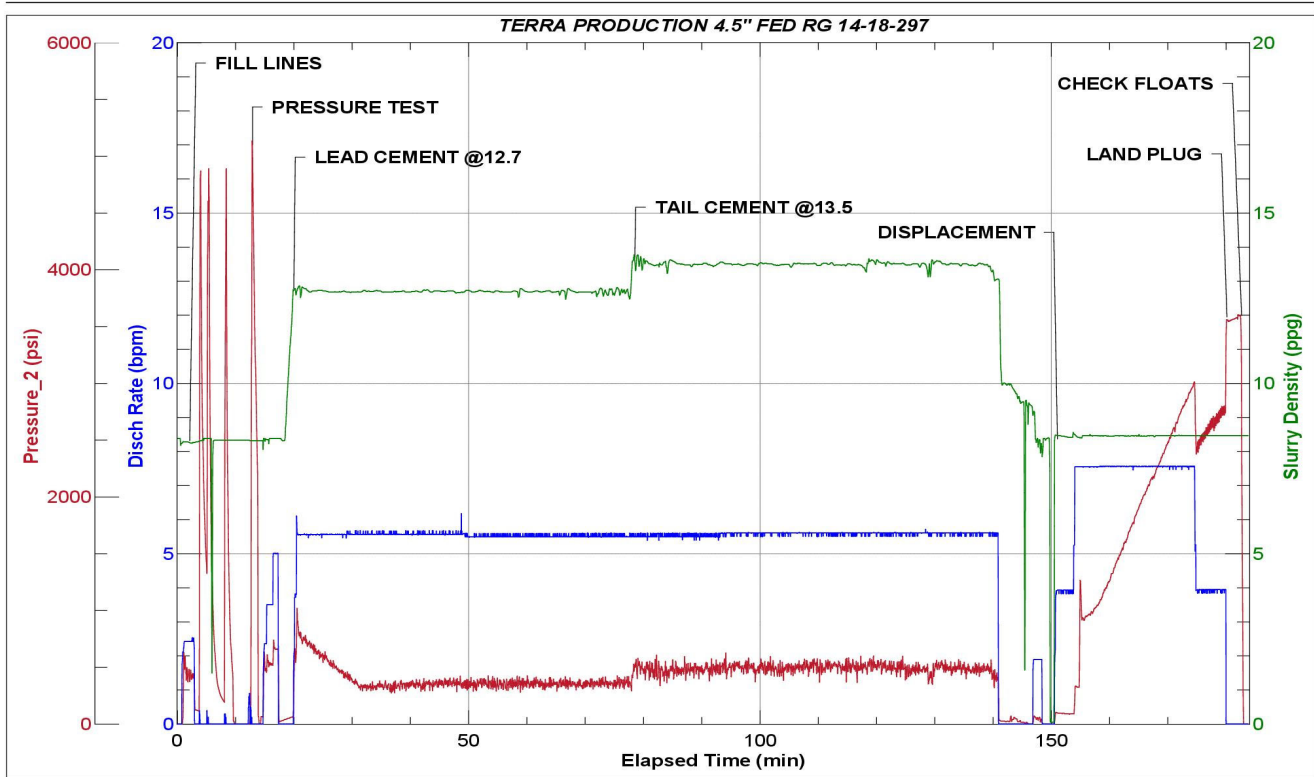
Line	Event	Date (MM/DD/YY)	Time (HH:MM)	Density (lb/gal)	Pump Rate (bpm)	Pump Volume (bbls)	Pipe Pressure (psi)	Comment
1	Callout	6/9/2024	09:00					CREW CALLED IN TO INSPECT AND PRE-TRIP EQUIPMENT
2	Safety Meeting	6/9/2024	13:30					PRE-CONVOY SAFETY MEETING
3	Depart Location	6/9/2024	14:00					DEPART RCO YARD FOR CUSTOMER LOCATION
4	Arrive On Location	6/9/2024	16:00					ARRIVED ON CUSTOMER LOCATION
5	Safety Meeting	6/9/2024	16:05					PRE-RIG UP SAFETY MEETING
6	Rig Up Iron	6/9/2024	16:30					RIG UP IRON AND HOSES
7	Safety Meeting	6/9/2024	18:20					PRE JOB-SAFETY MEETING WITH RIG CREW AND COMPANY MAN
8	Start Job	6/9/2024	18:31					START JOB
9	Fill Lines	6/9/2024	18:32	8.34	2	5	581	FILL LINES WITH 5 BBLS OF FRESH WATER
10	Pressure Test Lines	6/9/2024	18:35	8.34	1	1	5130	PRESSURE TEST LINES TO 5130
11	Pump Spacer	6/9/2024	18:47	8.34	5	10	576	PUMP 10 BBLS FRESH WATER SPACER
12	Pump Lead Cement	6/9/2024	19:01	12.7	5	50	490	START MIXING AND PUMPING 284 BBLS OF LEAD CEMENT @12.7 PPG (2.13 YLD, 11.42 GPS) 50 BBLS PUMP LEAD CEMENT
13	Pump Lead Cement	6/9/2024	19:10	12.7	5	50	318	PUMP 100 BBLS LEAD CEMENT
14	Pump Lead Cement	6/9/2024	19:19	12.7	5	50	364	PUMP 150 BBLS LEAD CEMENT
15	Pump Lead Cement	6/9/2024	19:28	12.7	5	50	439	PUMP 200 BBLS LEAD CEMENT
16	Pump Lead Cement	6/9/2024	19:50	12.7	5	84	349	PUMP 284 BBLS LEAD CEMENT
17	Pump Tail Cement	6/9/2024	19:59	13.5	5	50	548	START MIXING AND PUMPING 316 BBLS OF TAIL CEMENT @13.5 PPG (201 YLD, 9.72 GPS) 50 BBLS PUMP TAIL CEMENT
18	Pump Tail Cement	6/9/2024	20:08	13.5	5	50	527	PUMP 100 BBLS TAIL CEMENT
19	Pump Tail Cement	6/9/2024	20:17	13.5	5	50	500	PUMP 150 BBLS TAIL CEMENT
20	Pump Tail Cement	6/9/2024	20:26	13.5	5	50	548	PUMP 200 BBLS TAIL CEMENT
21	Pump Tail Cement	6/9/2024	20:35	13.5	5	50	513	PUMP 250 BBLS TAIL CEMENT
22	Pump Tail Cement	6/9/2024	20:53	13.5	5	66	422	PUMP 316 BBLS TAIL CEMENT
23	Shutdown	6/9/2024	20:54					SHUT DOWN
24	Clean Pumps and Lines	6/9/2024	20:56					WASH PUMP AND LINES TO 3-SIDED TANK
25	Drop Top Plug	6/9/2024	21:04					DROP TOP PLUG. VERIFIED BY COMPANY MAN
26	Pump Displacement	6/9/2024	21:12	8.34	8	50	1244	START 183 BBL FRESH WATER DISPLACEMENT WITH KCL. 50 BBLS DISPLACEMENT PUMPED
27	Pump Displacement	6/9/2024	21:19	8.34	8	50	2069	PUMP 100 BBLS FRESH WATER DISPLACEMENT
28	Pump Displacement	6/9/2024	21:26	8.34	8	73	2865	PUPMP 173 BBLS FRESH WATER DISPLACEMENT
29	Slow Pump Rate	6/9/2024	21:28	8.34	4	10	2679	SLOW RATE AND PREPARE TO LAND PLUG
30	Land Plug	6/9/2024	21:32				3550	LANDED PLUG. 2679 FCP. LAND PRESSURE 3550

Line	Event	Date (MM/DD/YY)	Time (HH:MM)	Density (lb/gal)	Pump Rate (bpm)	Pump Volume (bbls)	Pipe Pressure (psi)	Comment
31	Check Floats	6/9/2024	21:35					2.5 BBLS BACK UPON FLOAT CHECK
32	Safety Meeting	6/9/2024	21:40					PRE-RIG DOWN SAFETY MEETING
33	Rig Down Iron	6/9/2024	22:30					RIG DOWN IRON AND HOSES
34	Safety Meeting	6/9/2024	22:45					PRE-CONVOY SAFETY MEETING
35	Depart Location	6/9/2024	23:00					DEPART CUSTOMER LOACTION FOR RCO YARD
36	End Job	6/9/2024	23:00					END JOB

Pump Diagrams



JobMaster Program Version 5.01C1
Job Number: 91766
Customer: TERRA
Well Name: FED RG 14-18-297



Job Start: Sunday, June 09, 2024