



# **Terra Energy Partners, LLC**

## **SURFACE POST JOB REPORT**

**FED RG 414-18-297 05-103-12570**  
**S:13 T:2S R:98W Rio Blanco CO**

CallSheet #: 90539  
Proposal #: 74564



**SURFACE Post Job Report**

**Attention:** Mr. Dustin Childers | (936) 524-8828 | dchilders@terraep.com  
Terra Energy Partners, LLC  
4828 Loop Central Dr., Suite 900 | Houston, TX 77081

---

Dear Mr. Dustin Childers,

Thank you for the opportunity to provide cementing services on this well. American Cementing strives to achieve complete customer satisfaction. If you have any questions regarding the services or data provided, please contact American Cementing at any time.

Sincerely,

**Krystal Schell**

Field Engineer I | (719) 992-1830 | krystal.schell@americacementing.com

**Field Office**      28730 US-6, Rifle, CO 81650  
Phone: (970) 657-1187

## Job Details & Summary

### Geometry

Type	Function	OD (in)	ID (in)	Weight (lb/ft)	Thread	Top (ft)	Bottom (ft)	Excess (%)
Casing	Outer	20	19.5	53	n/a	0	80	0
Open Hole	Outer	n/a	17.5	n/a	n/a	80	1377	20
Casing	Inner	13.375	12.615	54.5	n/a	0	1380.94	0

### Equipment / People

Unit Type	Unit	Power Unit	Employee #1
Cement Trailer Float	CTF-576	TRC-112	Jacob Kirchenwitz
Field Storage Silo	FSS-438		
Light Duty Vehicles	LDV-128		Gerron McClure
Cement Pump Float	CPF-011	TRH-677	Eric Brown

### Timing

Event	Date/Time
ERTS	02/28/2024 16:00
Call Out	2/28/2024 08:15
Depart Facility	2/28/2024 13:30
On Location	2/28/2024 16:00
Rig Up Iron	2/28/2024 17:00
Job Started	2/28/2024 23:30
Job Completed	2/29/2024 01:35
Rig Down Iron	2/29/2024 02:00
Depart Location	2/29/2024 03:00

### General Job Information

Metrics	Value
Well Fluid Density	9 lb/gal
Well Fluid Type	WBW
Rig Circulation Vol	400 bbls
Rig Circulation Time	1 hours
Calculated Displacement	207 bbls
Actual Displacement	207 bbls
Total Spacer to Surface	20 bbls
Total CMT to Surface	39 bbls
Well Topped Out	No
Top Out Volume	N/A bbls

### Job Details

Metrics	Value
Flare Prior to Job	No
Flare Prior to Job	N/A units
Flare During Job	No
Flare During Job	N/A units
Flare at End of Job	No
Flare at End of Job	N/A units
Well Full Prior to Job	Yes
Well Fluid Density Into Well	9 lb/gal
Well Fluid Density Out of Well	9 lb/gal

### Job Details (cont.)

Metrics	Value
BHCT	84 °F
BHST	102 °F

### Water Analysis

Metrics	Value	Recommended
Water Source	None	
Temperature	65 °F	50-80 °F
pH Level	6	5.5-8.5
Chlorides	200 mg/L	0-3000 mg/L
Total Alkalinity	100	0-1000
Total Hardness	10 mg/L	0-500 mg/L
Carbonates	10 mg/L	0-100 mg/L
Sulfates	100 mg/L	0-1500 mg/L
Potassium	200 mg/L	0-3000 mg/L
Iron	10 mg/L	0-300 mg/L

### Circulation

Lost Circulation Experienced
No

### Job Execution Information

Fluid	Product	Function	Density (lb/gal)	Yield (ft <sup>3</sup> /sk)	Water Rq. (gal/sk)	Water Rq. (gal/bbl)	Volume (sks)	Volume (bbl)	Designed Top (ft)
1	Water	Flush	8.34			42.00		20.00	0
2	Lead	Lead	12.30	2.31	13.16		518.00	213.02	0
3	Water	DisplacementFinal	8.34			42.00		207.00	0

### Job Fluid Details

Fluid	Type	Fluid	Product	Function	Conc.	Uom
2	Lead	Lead	ASTM TYPE IL	Cement	100.00	%
2	Lead	Lead	A-10	Accelerator	5.00	%BWOB
2	Lead	Lead	A-2	Accelerator	3.00	lb/sk
2	Lead	Lead	A-7P	Accelerator	2.00	lb/sk
2	Lead	Lead	IntegraSeal POLI	LostCirculation	0.25	lb/sk
2	Lead	Lead	STATIC FREE	Other	0.01	lb/sk
2	Lead	Lead	XCem-308	Defoamer	0.30	%BWOB

## Job Logs

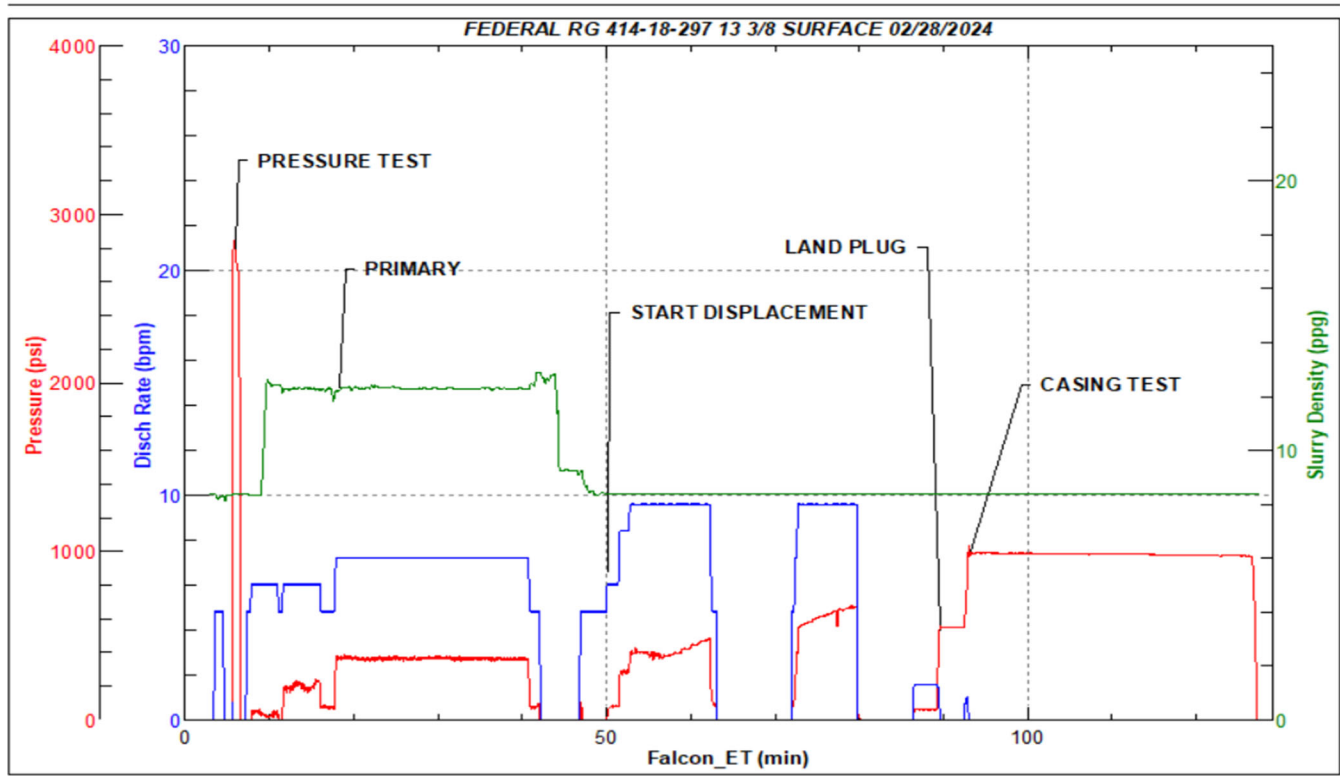
Line	Event	Date (MM/DD/YY)	Time (HH:MM)	Density (lb/gal)	Pump Rate (bpm)	Pump Volume (bbls)	Pipe Pressure (psi)	Comment
1	ARRIVE ON LOCATION	2/28/2024	16:00					ON LOCATION PER CUSTOMER REQUEST 1600
2	HAZARD ASSESSMENT	2/28/2024	16:05					
3	SPOT EQUIPMENT	2/28/2024	16:10					
4	PRE RIG UP SAFETY MEETING	2/28/2024	16:15					
5	RIG UP IRON	2/28/2024	17:15					
6	SAFETY MEETING	2/28/2024	23:00					
7	STAB HEAD	2/28/2024	23:20					
8	START JOB	2/28/2024	23:30					START JOB
9	PRESSURE TEST LINES	2/28/2024	23:33	8.34	1	5	3000	PRESSURE TEST LINES TO 3000
10	20 BBL FRESH WATER SPACER	2/28/2024	23:33	8.34	5	20	155	20 BBLS FRESH WATER SPACER
11	START PRIMARY SLURRY 12.3 LBS	2/28/2024	23:37	12.3	4	1	155	START 213 BBLS PRIMARY CEMENT SLURRY AT 12.3 (2.31, 13.16)
12	50 BBLS PRIMARY SLURRY	2/28/2024	23:43	12.3	7	50	466	
13	100 BBLS PRIMARY SLURRY	2/28/2024	23:50	12.3	7	100	462	
14	150 BBLS PRIMARY SLURRY	2/28/2024	23:58	12.3	7	150	462	
15	200 BBLS PRIMARY SLURRY	2/29/2024	00:06	12.3	7	200	484	
16	END OF PRIMARY SLURRY	2/29/2024	00:09	12.3	4	213	175	END OF 213 BBL PRIMARY CEMENT SLURRY
17	SHUT DOWN/DROP PLUG	2/29/2024	00:13					SHUT DOWN AND DROP THE PLUG
18	START FRESH WATER DISPLACEMENT	2/29/2024	00:13	8.34	4	1	105	START 207 BBLS OF FRESH WATER DSPLACEMENT
19	50 BBLS FRESH WATER DISPLACEMENT	2/29/2024	00:21	8.34	10	50	662	
20	100 BBLS FRESH WATER DISPLACEMENT	2/29/2024	00:26	8.34	10	100	672	
21		2/29/2024	00:29	8.34	4	124	262	RIG ISSUES FORCED A SHUT DOWN FOR 10 MINS AT 124 BBLS AWAY
22		2/29/2024	00:38	8.34	1	124	171	STARTED ON DISPLACEMENT WHERE WE LEFT OFF AT 124 BBLS AWAY
23	150 BBLS FRESH WATER DISPLACEMENT	2/29/2024	00:41	8.34	10	150	820	
24	PRESSURE BEFORE SHUT DOWN	2/29/2024	00:46	8.34	10	195	910	PRESSURE BEFORE SHUT DOWN 910
25	FINAL LIFT PRESSURE	2/29/2024	00:56	8.34	1	207	171	FINAL LIFT PRESSURE TO LAND THE PLUG 171
26	LAND PLUG	2/29/2024	00:56	8.34	1	207	682	LAND PLUG 682
27	CASING TEST	2/29/2024	01:01	8.34	2	1	1100	CASING TEST FOR 30 MINS HIGH 1191 LOW 1153
28	CHECK FLOATS	2/29/2024	01:32					BBLs RETURNED UPON FLOAT CHECK 1.5 BBLs
29		2/29/2024	01:35					END OF CEMENTING SERVICES/ CIRCULATED 36 BBLs OF CEMENT TO SURFACE PIT

Line	Event	Date (MM/DD/YY)	Time (HH:MM)	Density (lb/gal)	Pump Rate (bpm)	Pump Volume (bbls)	Pipe Pressure (psi)	Comment
30	PRE RIG DOWN SAFTEY MEETING	2/29/2024	01:45					
31	RIG DOWN IRON	2/29/2024	02:00					
32	PRE CONVOY SAFTEY MEETING	2/29/2024	02:45					
33	LOCATION DEPARTURE	2/29/2024	03:00					
34	END JOB	2/29/2024	03:00					END JOB

## Pump Diagrams



JobMaster Program Version 5.01C1  
Job Number: 90539  
Customer: TERRA  
Well Name: FEDERAL RG 414-18 297



Job Start: Wednesday, February 28, 2024