



---

# **Terra Energy Partners, LLC LONG STRING POST JOB REPORT**

**FED RG 414-18-297 05-103-12570  
S:13 T:2S R:98W Rio Blanco CO**

CallSheet #: 91848  
Proposal #: 76836



**LONG STRING Post Job Report**

**Attention:** Mr. Dustin Childers | (936) 524-8828 | dchilders@terraep.com  
Terra Energy Partners, LLC  
4828 Loop Central Dr., Suite 900 | Houston, TX 77081

---

Dear Mr. Dustin Childers,

Thank you for the opportunity to provide cementing services on this well. American Cementing strives to achieve complete customer satisfaction. If you have any questions regarding the services or data provided, please contact American Cementing at any time.

Sincerely,

**Addison Kneale**

Field Engineer I | (904) 228-9560 | addison.kneale@americacementing.com

**Field Office**      28730 US-6, Rifle, CO 81650  
Phone: (970) 657-1187

## Job Details & Summary

### Geometry

Type	Function	OD (in)	ID (in)	Weight (lb/ft)	Thread	Top (ft)	Bottom (ft)	Excess (%)
Casing	Outer	9.625	8.921	36	n/a	0	3099	0
Open Hole	Outer	n/a	8.75	n/a	n/a	3102	8107	45
Open Hole	Outer	n/a	8.75	n/a	n/a	8107	11850	45
Casing	Inner	4.5	4	11.6	BTC	0	11837	0

### Equipment / People

Unit Type	Unit	Power Unit	Employee #1
Field Storage Silo	FSS-438		
Field Storage Silo	FSS-470		
Cement Trailer Float	CTF-273	TRC-053	Jared Allen
Cement Pump Float	CPF-058	TRH-677	Jeremy Bradbrook
Light Duty Vehicles	LDV-128		Gerron McClure

### Timing

Event	Date/Time
ERTS	06/16/2024 00:00
Call Out	6/16/2024 06:30
Depart Facility	6/16/2024 11:30
On Location	6/16/2024 13:30
Rig Up Iron	6/16/2024 15:00
Job Started	6/16/2024 18:03
Job Completed	6/16/2024 20:45
Rig Down Iron	6/16/2024 21:00
Depart Location	6/16/2024 21:30

### General Job Information

Metrics	Value
Well Fluid Density	10.5 lb/gal
Well Fluid Type	WBM
Rig Circulation Vol	800 bbls
Rig Circulation Time	2 hours
Calculated Displacement	182.9 bbls
Actual Displacement	182 bbls
Total Spacer to Surface	N/A bbls
Total CMT to Surface	N/A bbls
Well Topped Out	No
Top Out Volume	N/A bbls

### Job Details

Metrics	Value
Well Full Prior to Job	Yes
Well Fluid Density Into Well	10.5 lb/gal
Well Fluid Density Out of Well	10.5 lb/gal

### Job Details (cont.)

Metrics	Value
BHCT	204 °F
BHST	269 °F

### Water Analysis

Metrics	Value	Recommended
Water Source	None	
Temperature	68 °F	50-80 °F
pH Level	6	5.5-8.5
Chlorides	200 mg/L	0-3000 mg/L
Total Alkalinity	100	0-1000
Total Hardness	10 mg/L	0-500 mg/L
Carbonates	10 mg/L	0-100 mg/L
Sulfates	100 mg/L	0-1500 mg/L
Potassium	200 mg/L	0-3000 mg/L
Iron	10 mg/L	0-300 mg/L

### Circulation

Lost Circulation Experienced
No

### Job Execution Information

Fluid	Product	Function	Density (lb/gal)	Yield (ft <sup>3</sup> /sk)	Water Rq. (gal/sk)	Water Rq. (gal/bbl)	Volume (sks)	Volume (bbl)	Designed Top (ft)
1	Water	Flush	8.34			42.00		10.00	6423
2	Lead	Lead	12.70	2.13	11.42		749.00	283.97	6549
3	Tail	Tail	13.50	2.01	9.72		884.00	316.45	8107
4	Displacement	DisplacementFinal	8.34			42.00		182.90	0

### Job Fluid Details

Fluid	Type	Fluid	Product	Function	Conc.	Uom
2	Lead	Lead	ASTM TYPE IL	Cement	100.00	%
2	Lead	Lead	A-2	Accelerator	0.10	%BWOB
2	Lead	Lead	FL-66	FluidLoss	0.20	%BWOB
2	Lead	Lead	GW-86	Viscosifier	0.05	%BWOB
2	Lead	Lead	IntegraSeal PHENO	LostCirculation	3.00	lb/sk
2	Lead	Lead	IntegraSeal POLI	LostCirculation	0.25	lb/sk
2	Lead	Lead	R-3	Retarder	0.70	%BWOB
2	Lead	Lead	STATIC FREE	Other	0.01	lb/sk
2	Lead	Lead	XCem-1009	Extender	10.00	lb/sk
2	Lead	Lead	XCem-311	Defoamer	0.30	%BWOB
3	Tail	Tail	CLASS G	Cement	70.00	%
3	Tail	Tail	FLY ASH (POZZOLAN)	Extender	30.00	%
3	Tail	Tail	BENTONITE	Viscosifier	8.00	%BWOB
3	Tail	Tail	FL-24	FluidLoss	0.40	%BWOB
3	Tail	Tail	GW-86	Viscosifier	0.10	%BWOB
3	Tail	Tail	IntegraSeal PHENO	LostCirculation	3.00	lb/sk
3	Tail	Tail	R-3	Retarder	0.30	%BWOB
3	Tail	Tail	S-8	StrengthRetgression	26.00	%BWOB
3	Tail	Tail	XCem-311	Defoamer	0.30	%BWOB

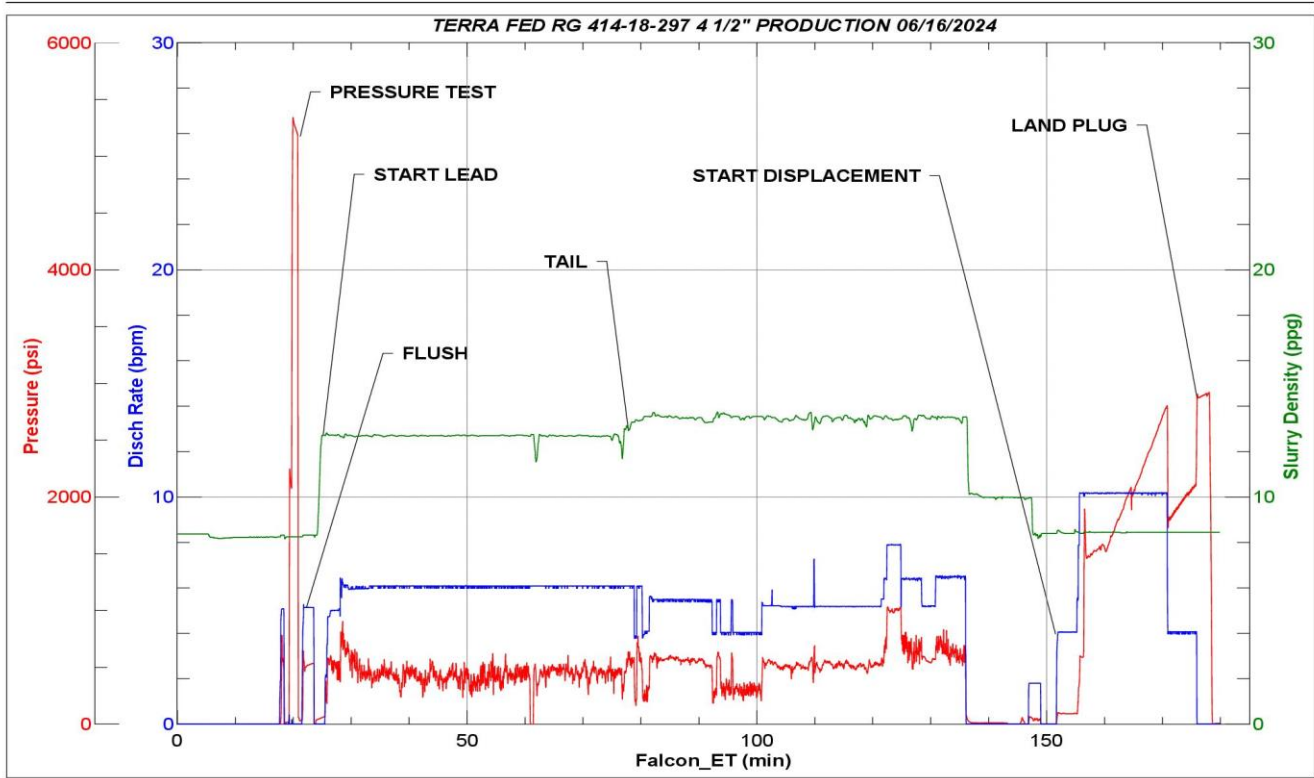
## Job Logs

Line	Event	Date (MM/DD/YY)	Time (HH:MM)	Density (lb/gal)	Pump Rate (bpm)	Pump Volume (bbls)	Pipe Pressure (psi)	Comment
1	ARRIVED ON LOCATION	6/16/2024	13:30					ARRIVED ON LOCATION PER CUSTOMER REQUEST 13:30
2	HAZARD ASSESMENT	6/16/2024	13:35					
3	SPOT EQUIPMENT	6/16/2024	13:50					
4	PRE RIG UP SAFETY MEETING	6/16/2024	14:00					
5	RIGGED UP	6/16/2024	15:00					
6	PRE JOB SAFETY MEETING	6/16/2024	17:30					
7	STAB HEAD	6/16/2024	17:45					
8	START JOB	6/16/2024	18:03					START JOB
9	PRESSURE TEST LINES 5000 PSI	6/16/2024	18:05	8.34	1	1	5000	PRESSURE TEST LINES 5000 PSI
10	10 BBL FW SPACER	6/16/2024	18:07	8.34	5	10	519	10 BBL FRESH WATER SPACER
11	START 284 BBL LEAD SLURRY @ 12.7	6/16/2024	18:09	12.7	5	1	340	START 284 BBL LEAD SLURRY @ 12.7 (2.13,11.42) 749 TOTAL SACKS
12	50 BBL GONE ON LEAD	6/16/2024	18:20	12.7	6	50	421	
13	100 BBL GONE ON LEAD	6/16/2024	18:28	12.7	6	100	396	
14	150 BBL GONE ON LEAD	6/16/2024	18:36	12.7	6	150	422	
15	200 BBL GONE ON LEAD	6/16/2024	18:45	12.7	6	200	489	
16	END OF LEAD SLURRY	6/16/2024	19:01	12.7	6	250	353	END OF LEAD SLURRY
17	START 316.5 BBL TAIL SLURRY @ 13.5	6/16/2024	19:01	13.5	5	284	569	START 316.5 BBL TAIL SLURRY @ 13.5 (2.01,9.72) 884 TOTAL SACKS
18	50 BBL GONE ON TAIL	6/16/2024	19:11	13.5	6	1	548	
19	100 BBL GONE ON TAIL	6/16/2024	19:20	13.5	6	50	458	
20	150 BBL GONE ON TAIL	6/16/2024	19:32	13.5	6	100	323	
21	200 BBL GONE ON TAIL	6/16/2024	19:41	13.5	6	150	436	
22	250 BBL GONE ON TAIL	6/16/2024	19:50	13.5	6	200	558	
23	END OF TAIL SLURRY	6/16/2024	20:09	13.5	6	316.5	682	END OF TAIL SLURRY
24	SHUTDOWN/ WASH LINES/ DROP TOP PLUG	6/16/2024	20:11					SHUTDOWN/ WASH LINES/ DROP TOP PLUG
25	START 182.9 BBL FRESH WATER DISPLACEMENT WITH KCL	6/16/2024	20:15	8.34	4	1	103	START 182.9 BBL FRESH WATER DISPLACEMENT WITH KCL
26	50 BBL GONE ON DISPLACEMENT	6/16/2024	20:25	8.34	10	50	1559	CAUGHT CEMENT @ 26 BBL GONE 10/ 1548
27	100 BBL GONE ON DISPLACEMENT	6/16/2024	20:31	8.34	10	100	2042	
28	150 BBL GONE ON DISPLACEMENT	6/16/2024	20:36	8.34	10	150	2703	
29	PRESSURE BEFORE SLOW RATE	6/16/2024	20:38	8.34	10	173	2863	PRESSURE BEFORE SLOWING RATE - 2863
30	SLOW RATE PRESSURE	6/16/2024	20:38	8.34	4	173	2108	SLOW RATE PRESSURE @ 4BPM - 2108
31	PRESSURE BEFORE LANDING PLUG	6/16/2024	20:42	8.34	4	183	2183	FINAL LIFT PRESSURE TO LAND PLUG - 2183
32	LAND PLUG	6/16/2024	20:42	8.34	4	183	2879	LAND PLUG - 2879
33	CHECK FLOAT	6/16/2024	20:47	8.34				RETURNED 2 BBLs UPON FLOAT CHECK
34	PRE RIG DOWN SAFETY MEETING	6/16/2024	21:00					
35	RIGGED DOWN	6/16/2024	21:20					
36	PRE CONVOY SAFETY MEETING	6/16/2024	21:25					
37	LOCATION DEPARTURE	6/16/2024	21:30					
38	END OF JOB	6/16/2024	21:30					END OF JOB

## Pump Diagrams



JobMaster Program Version 5.01C1  
Job Number: 91848  
Customer: TERRA  
Well Name: FEDERAL RG 414-18 297



Job Start: Sunday, June 16, 2024