



Terra Energy Partners, LLC

INTERMEDIATE POST JOB REPORT

FED RG 414-18-297 05-103-12570
S:13 T:2S R:98W Rio Blanco CO

CallSheet #: 91847
Proposal #: 76962



INTERMEDIATE Post Job Report

Attention: Mr. Dustin Childers | (936) 524-8828 | dchilders@terraep.com
Terra Energy Partners, LLC
4828 Loop Central Dr., Suite 900 | Houston, TX 77081

Dear Mr. Dustin Childers,

Thank you for the opportunity to provide cementing services on this well. American Cementing strives to achieve complete customer satisfaction. If you have any questions regarding the services or data provided, please contact American Cementing at any time.

Sincerely,

Krystal Schell

Field Engineer I | (719) 992-1830 | krystal.schell@americacementing.com

Field Office 28730 US-6, Rifle, CO 81650
Phone: (970) 657-1187

Job Details & Summary

Geometry

Type	Function	OD (in)	ID (in)	Weight (lb/ft)	Thread	Top (ft)	Bottom (ft)	Excess (%)
Casing	Outer	13.375	12.615	54.5	n/a	0	1377	0
Open Hole	Outer	n/a	12.25	n/a	n/a	1377	3125	50
Open Hole	Outer	n/a	12.25	n/a	n/a	2599	3125	50
Casing	Inner	9.625	8.921	36	n/a	0	3125	0

Equipment / People

Unit Type	Unit	Power Unit	Employee #1
Cement Trailer Float	CTF-385	TRB-421	Matthew Pinkney
Light Duty Vehicles	LDV-147		Eric Brown
Cement Pump Float	CPF-058	TRH-677	Jeremy Bradbrook
Light Duty Vehicles	LDV-088		Jared Allen

Timing

Event	Date/Time
ERTS	06/10/2024 00:00
Call Out	6/10/2024 18:00
Depart Facility	6/10/2024 23:00
On Location	6/11/2024 01:00
Rig Up Iron	6/11/2024 01:30
Job Started	6/11/2024 03:26
Job Completed	6/11/2024 04:30
Rig Down Iron	6/11/2024 05:15
Depart Location	6/11/2024 06:00

General Job Information

Metrics	Value
Well Fluid Density	9 lb/gal
Well Fluid Type	WBM
Rig Circulation Vol	450 bbls
Rig Circulation Time	1 hours
Calculated Displacement	241 bbls
Actual Displacement	241 bbls
Total Spacer to Surface	0 bbls
Total CMT to Surface	0 bbls
Well Topped Out	No
Top Out Volume	N/A bbls

Job Details

Metrics	Value
Flare Prior to Job	No
Flare Prior to Job	N/A units
Flare During Job	No
Flare During Job	N/A units
Flare at End of Job	No
Flare at End of Job	N/A units
Well Full Prior to Job	Yes
Well Fluid Density Into Well	9 lb/gal
Well Fluid Density Out of Well	9 lb/gal

Job Details (cont.)

Metrics	Value
BHCT	87 °F
BHST	117 °F

Water Analysis

Metrics	Value	Recommended
Water Source	Upright Rig Tank	
Temperature	67 °F	50-80 °F
pH Level	8	5.5-8.5
Chlorides	0 mg/L	0-3000 mg/L
Total Alkalinity	240	0-1000
Total Hardness	425 mg/L	0-500 mg/L
Carbonates	10 mg/L	0-100 mg/L
Sulfates	<200 mg/L	0-1500 mg/L
Potassium	0 mg/L	0-3000 mg/L
Iron	0 mg/L	0-300 mg/L

Circulation

Lost Circulation Experienced

No

Job Execution Information

Fluid	Product	Function	Density (lb/gal)	Yield (ft ³ /sk)	Water Rq. (gal/sk)	Water Rq. (gal/bbl)	Volume (sks)	Volume (bbl)	Designed Top (ft)
1	Water	Flush	8.34			42.00		20.00	1860
2	Lead	Lead	12.30	2.31	13.17		102.00	41.95	2099
3	Tail	Tail	12.80	2.03	11.16		125.00	45.28	2599
4	Water	DisplacementFinal	8.34			42.00		238.00	0

Job Fluid Details

Fluid	Type	Fluid	Product	Function	Conc.	Uom
2	Lead	Lead	ASTM TYPE IL	Cement	100.00	%
2	Lead	Lead	A-10	Accelerator	5.00	%BWOB
2	Lead	Lead	A-2	Accelerator	3.00	lb/sk
2	Lead	Lead	A-7P	Accelerator	2.00	lb/sk
2	Lead	Lead	IntegraSeal POLI	LostCirculation	0.25	lb/sk
2	Lead	Lead	STATIC FREE	Other	0.01	lb/sk
2	Lead	Lead	XCem-311	Defoamer	0.30	%BWOB
3	Tail	Tail	ASTM TYPE IL	Cement	100.00	%
3	Tail	Tail	A-10	Accelerator	5.00	%BWOB
3	Tail	Tail	A-2	Accelerator	2.00	lb/sk
3	Tail	Tail	A-7P	Accelerator	2.00	lb/sk
3	Tail	Tail	IntegraSeal POLI	LostCirculation	0.25	lb/sk
3	Tail	Tail	STATIC FREE	Other	0.01	lb/sk
3	Tail	Tail	XCem-311	Defoamer	0.30	%BWOB

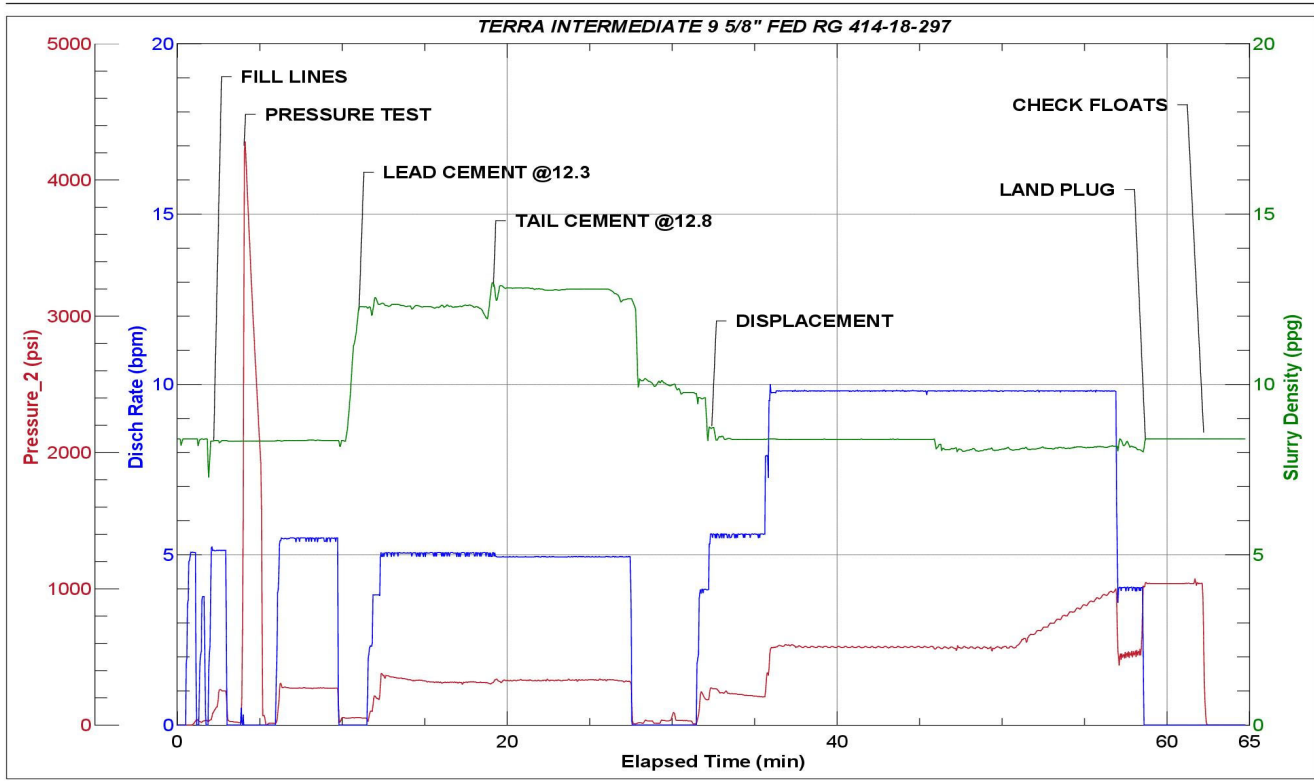
Job Logs

Line	Event	Date (MM/DD/YY)	Time (HH:MM)	Density (lb/gal)	Pump Rate (bpm)	Pump Volume (bbls)	Pipe Pressure (psi)	Comment
1	Callout	6/10/2024	18:00					CREW CALLED IN THE INSPECT AND PRE-TRIP EQUIPMENT
2	Safety Meeting	6/10/2024	22:30					PRE-CONVOY SAFETY MEETING
3	Depart Location	6/10/2024	23:00					DEPART RCO YARD FOR CUSTOMER LOCATION
4	Arrive On Location	6/11/2024	01:00					ARRIVE ON CUSTOMER LOCATION PER REQUEST
5	Safety Meeting	6/11/2024	01:05					PRE-RIG UP SAFETY MEETING
6	Rig Up Iron	6/11/2024	01:30					RIG UP IRON AND HOSES
7	Safety Meeting	6/11/2024	03:10					PRE JOB-SAFETY MEETING WITH RIG CREW AND COMPANY MAN
8	Start Job	6/11/2024	03:26					START JOB
9	Fill Lines	6/11/2024	03:28	8.34	5	5	117	FILL LINES WITH 5 BBLS OF FRESH WATER
10	Pressure Test Lines	6/11/2024	03:32	8.34	1	1	4250	PRESSURE TEST LINES TO 4250 PSI
11	Pump Spacer	6/11/2024	03:34	8.34	5	20	286	PUMP 20 BBLS FRESH WATER SPACER
12	Pump Lead Cement	6/11/2024	03:39	12.3	5	0	335	START MIXING AND PUMPING LEAD CEMENT @12.3 PPG (2.31 YLD, 13.17 GPS)
13	Pump Lead Cement	6/11/2024	03:47	12.3	5	42	333	PUMP 42 BBLS OF LEAD CEMENT
14	Pump Tail Cement	6/11/2024	03:48	12.8	5	0	322	START MIXING AND PUMPING TAIL CEMENT @12.8 PPG (2.03 YLD, 11.16 GPS)
15	Pump Tail Cement	6/11/2024	03:55	12.8	5	45	335	PUMP 45 BBLS OF TAIL CEMENT
16	Shutdown	6/11/2024	03:56					SHUTDOWN AND PREPARE TO DROP TOP PLUG
17	Drop Top Plug	6/11/2024	04:00					PLUG DROPPED. VERIFIED BY COMPANY MAN
18	Pump Displacement	6/11/2024	04:06	8.34	10	50	558	START 238 BBLS FRESH WATER DISPLACEMENT. 50 BBLS FRESH WATER DISPLACEMENT PUMPED
19	Pump Displacement	6/11/2024	04:12	8.34	10	50	591	PUMP 100 BBLS FRESH WATER DISPLACEMENT
20	Pump Displacement	6/11/2024	04:18	8.34	10	50	590	PUMP 150 BBLS FRESH WATER DISPLACEMENT
21	Pump Displacement	6/11/2024	04:22	8.34	10	78	1006	PUMP 228 BBLS FRESH WATER DISPLACEMENT
22	Slow Pump Rate	6/11/2024	04:25	8.34	4	10	589	SLOW PUMP RATE AND PREPARE TO LAND TOP PLUG
23	Land Plug	6/11/2024	04:27				1041	PLUG LANDED. 589 PSI FCP. LANDED UP TO 1041 PSI
24	Check Floats	6/11/2024	04:30					1 BBL BACK UPON FLOAT CHECK
25	Safety Meeting	6/11/2024	05:00					PRE-RIG DOWN SAFETY MEETING
26	Rig Down Iron	6/11/2024	05:15					RIG DOWN IRON AND HOSES
27	Safety Meeting	6/11/2024	05:45					PRE-CONVOY SAFETY MEETING
28	Depart Location	6/11/2024	06:00					DEPART CUSTOMER LOCATION FOR RCO YARD
29	End Job	6/11/2024	06:00					END JOB

Pump Diagrams



JobMaster Program Version 5.01C1
Job Number: 91847
Customer: TERRA
Well Name: FED RG 414-18-297



Job Start: Tuesday, June 11, 2024