



Terra Energy Partners, LLC

SURFACE POST JOB REPORT

FED RG 21-24-298 05-103-12575
S:13 T:2S R:98W Rio Blanco CO

CallSheet #: 90516
Proposal #: 74563



SURFACE Post Job Report

Attention: Mr. Dustin Childers | (936) 524-8828 | dchilders@terraep.com
Terra Energy Partners, LLC
4828 Loop Central Dr., Suite 900 | Houston, TX 77081

Dear Mr. Dustin Childers,

Thank you for the opportunity to provide cementing services on this well. American Cementing strives to achieve complete customer satisfaction. If you have any questions regarding the services or data provided, please contact American Cementing at any time.

Sincerely,

Krystal Schell

Field Engineer I | (719) 992-1830 | krystal.schell@americacementing.com

Field Office 28730 US-6, Rifle, CO 81650
Phone: (970) 657-1187

Job Details & Summary

Geometry

Type	Function	OD (in)	ID (in)	Weight (lb/ft)	Thread	Top (ft)	Bottom (ft)	Excess (%)
Casing	Outer	20	19.5	53	n/a	0	80	0
Open Hole	Outer	n/a	17.5	n/a	n/a	80	1376	20
Casing	Inner	13.375	12.615	54.5	n/a	0	1380	0

Equipment / People

Unit Type	Unit	Power Unit	Employee #1
Cement Trailer Float	CTF-340	TRC-201	Steven Richey
Field Storage Silo	FSS-470	TRH-677	Christopher Lough
Light Duty Vehicles	LDV-157		Francisco Castillo

Timing

Event	Date/Time
ERTS	02/26/2024 22:00
Call Out	2/26/2024 18:00
Depart Facility	2/26/2024 18:15
On Location	2/26/2024 19:15
Rig Up Iron	2/26/2024 19:30
Job Started	2/27/2024 16:42
Job Completed	2/27/2024 18:27
Rig Down Iron	2/27/2024 18:30
Depart Location	2/27/2024 19:00

General Job Information

Metrics	Value
Well Fluid Density	9 lb/gal
Well Fluid Type	WBM
Rig Circulation Vol	300 bbls
Rig Circulation Time	0.5 hours
Calculated Displacement	207 bbls
Actual Displacement	207 bbls
Total Spacer to Surface	20 bbls
Total CMT to Surface	117 bbls
Well Topped Out	No

Job Details

Metrics	Value
Flare Prior to Job	No
Flare Prior to Job	0 units
Flare During Job	No
Flare During Job	0 units
Flare at End of Job	No
Flare at End of Job	0 units
Well Full Prior to Job	Yes
Well Fluid Density Into Well	9 lb/gal
Well Fluid Density Out of Well	9 lb/gal

Job Details (cont.)

Metrics	Value
BHCT	84 °F
BHST	102 °F

Water Analysis

Metrics	Value	Recommended
Water Source	Upright Rig Tank	
Temperature	54 °F	50-80 °F
pH Level	7	5.5-8.5
Chlorides	0 mg/L	0-3000 mg/L
Total Alkalinity	240	0-1000
Total Hardness	250 mg/L	0-500 mg/L
Carbonates	0 mg/L	0-100 mg/L
Sulfates	200 mg/L	0-1500 mg/L
Potassium	250 mg/L	0-3000 mg/L
Iron	0 mg/L	0-300 mg/L

Circulation

Lost Circulation Experienced
No

Job Execution Information

Fluid	Product	Function	Density (lb/gal)	Yield (ft ³ /sk)	Water Rq. (gal/sk)	Water Rq. (gal/bbl)	Volume (sks)	Volume (bbl)	Designed Top (ft)
1	Water	Flush	8.34			42.00		20.00	0
2	Lead	Lead	12.30	2.31	13.16		518.00	213.02	0
3	Water	DisplacementFinal	8.34			42.00		207.00	0

Job Fluid Details

Fluid	Type	Fluid	Product	Function	Conc.	Uom
2	Lead	Lead	ASTM TYPE IL	Cement	100.00	%
2	Lead	Lead	A-10	Accelerator	5.00	%BWOB
2	Lead	Lead	A-2	Accelerator	3.00	lb/sk
2	Lead	Lead	A-7P	Accelerator	2.00	lb/sk
2	Lead	Lead	IntegraSeal POLI	LostCirculation	0.25	lb/sk
2	Lead	Lead	STATIC FREE	Other	0.01	lb/sk
2	Lead	Lead	XCem-308	Defoamer	0.30	%BWOB

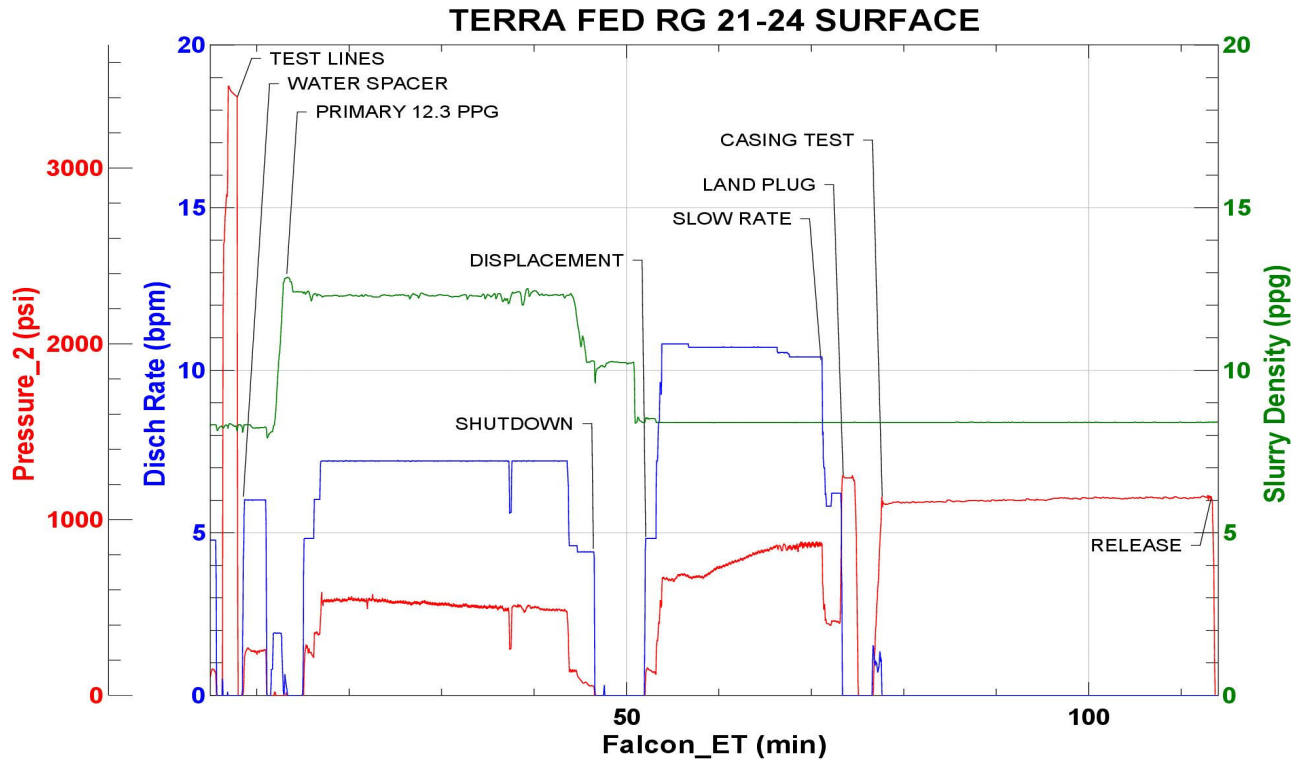
Job Logs

Line	Event	Date (MM/DD/YY)	Time (HH:MM)	Density (lb/gal)	Pump Rate (bpm)	Pump Volume (bbls)	Pipe Pressure (psi)	Comment
1	CALLOUT	2/26/2024	18:00					ON LOCATION AT 22:00 HRS
2	LEAVE THE YARD	2/26/2024	18:15					CREW LEAVE THE YARD
3	ON LOCATION	2/26/2024	19:15					CREW ON LOCATION
4	RIG UP	2/26/2024	19:30					RIG UP MEETING, RIG UP
5	SAFETY MEETING	2/27/2024	15:50					PRE-JOB SAFETY MEETING
6	PRESSURE TEST	2/27/2024	16:39				3261	PRESSURE TEST LINES
7	WATER SPACER	2/27/2024	16:42	8.34	6	20	251	WATER SPACER
8	PRIMARY	2/27/2024	16:48	12.3	7	50	385	PRIMARY 518 SKS/213 BBLS AT 12.3 PPB
9	PRIMARY	2/27/2024	16:56	12.3	7	50	523	100 BBLS CEMENT PUMPED
10	PRIMARY	2/27/2024	17:03	12.3	7	50	501	150 BBLS CEMENT PUMPED
11	PRIMARY	2/27/2024	17:10	12.3	7	63	507	213 BBLS CEMENT PUMPED
12	SHUTDOWN	2/27/2024	17:20					SHUTDOWN, DROP PLUG
13	DISPLACEMENT	2/27/2024	17:26	8.34	10.5	50	677	DISPLACEMENT WATER
14	DISPLACEMENT	2/27/2024	17:31	8.34	10.5	50	781	100 BBLS DISPLACEMENT PUMPED
15	DISPLACEMENT	2/27/2024	17:36	8.34	10.5	50	855	150 BBLS DISPLACEMENT PUMPED
16	DISPLACEMENT	2/27/2024	17:41	8.34	10.5	47	861	197 BBLS DISPLACEMENT PUMPED
17	SLOW RATE	2/27/2024	17:45	8.34	6	10	421	SLOW RATE
18	LAND PLUG	2/27/2024	17:47				1237	LAND PLUG, 117 BBLS CMT TO SURFACE
19	CHECK FLOATS	2/27/2024	17:49					FLOATS HELD, 1 BBL FLOW BACK
20	CASING TEST	2/27/2024	17:50				1101	PRESSURE TEST CASING
21	RELEASE PSI	2/27/2024	18:27				1138	RELEASE CASING PRESSURE
22	RIG DOWN	2/27/2024	18:30					RIG DOWN MEETING, RIG DOWN
23	LEAVE LOCATION	2/27/2024	19:00					CREW LEAVE LOCATION

Pump Diagrams



JobMaster Program Version 5.01C1
Job Number: 90516
Customer: TERRA
Well Name: FED RG 21-24-297



Job Start: Tuesday, February 27, 2024