



# **Terra Energy Partners, LLC**

## **INTERMEDIATE POST JOB REPORT**

**FED RG 21-24-298 05-103-12575**  
**S:13 T:2S R:98W Rio Blanco CO**

CallSheet #: 91933  
Proposal #: 77066



**INTERMEDIATE Post Job Report**

**Attention:** Mr. Dustin Childers | (936) 524-8828 | dchilders@terraep.com  
Terra Energy Partners, LLC  
4828 Loop Central Dr., Suite 900 | Houston, TX 77081

---

Dear Mr. Dustin Childers,

Thank you for the opportunity to provide cementing services on this well. American Cementing strives to achieve complete customer satisfaction. If you have any questions regarding the services or data provided, please contact American Cementing at any time.

Sincerely,

**Krystal Schell**

Field Engineer I | (719) 992-1830 | krystal.schell@americacementing.com

**Field Office**      28730 US-6, Rifle, CO 81650  
Phone: (970) 657-1187

## Job Details & Summary

### Geometry

Type	Function	OD (in)	ID (in)	Weight (lb/ft)	Thread	Top (ft)	Bottom (ft)	Excess (%)
Casing	Outer	13.375	12.615	54.5	n/a	0	1377	0
Open Hole	Outer	n/a	12.25	n/a	n/a	1380	2650	50
Open Hole	Outer	n/a	12.25	n/a	n/a	2650	3163	50
Casing	Inner	9.625	8.921	36	LTC	0	3157.25	0

### Equipment / People

Unit Type	Unit	Power Unit	Employee #1
Cement Trailer Float	CTF-161	TRC-201	James Lujan
Cement Pump Float	CPF-058	TRH-677	Jeremy Bradbrook
Light Duty Vehicles	LDV-128		Gerron McClure

### Timing

Event	Date/Time
ERTS	06/18/2024 02:00
Call Out	6/17/2024 18:30
Depart Facility	6/17/2024 22:00
On Location	6/18/2024 02:00
Rig Up Iron	6/18/2024 03:00
Job Started	6/18/2024 09:50
Job Completed	6/18/2024 10:52
Rig Down Iron	6/18/2024 11:25
Depart Location	6/18/2024 11:30

### General Job Information

Metrics	Value
Well Fluid Density	9 lb/gal
Well Fluid Type	WBM
Rig Circulation Vol	300 bbls
Rig Circulation Time	2 hours
Calculated Displacement	240.3 bbls
Actual Displacement	240 bbls
Total Spacer to Surface	0 bbls
Total CMT to Surface	0 bbls
Well Topped Out	No
Top Out Volume	N/A bbls

### Job Details

Metrics	Value
Flare Prior to Job	No
Flare Prior to Job	N/A units
Flare During Job	No
Flare During Job	N/A units
Flare at End of Job	No
Flare at End of Job	N/A units
Well Full Prior to Job	Yes
Well Fluid Density Into Well	9 lb/gal
Well Fluid Density Out of Well	9 lb/gal

### Job Details (cont.)

Metrics	Value
BHCT	87 °F
BHST	117 °F

### Water Analysis

Metrics	Value	Recommended
Water Source	Upright Rig Tank	
Temperature	68 °F	50-80 °F
pH Level	6	5.5-8.5
Chlorides	200 mg/L	0-3000 mg/L
Total Alkalinity	100	0-1000
Total Hardness	10 mg/L	0-500 mg/L
Carbonates	10 mg/L	0-100 mg/L
Sulfates	100 mg/L	0-1500 mg/L
Potassium	200 mg/L	0-3000 mg/L
Iron	10 mg/L	0-300 mg/L

## Circulation

Lost Circulation Experienced

No

## Job Execution Information

Fluid	Product	Function	Density (lb/gal)	Yield (ft <sup>3</sup> /sk)	Water Rq. (gal/sk)	Water Rq. (gal/bbl)	Volume (sks)	Volume (bbl)	Designed Top (ft)
1	Water	Flush	8.34			42.00		20.00	1911
2	Lead	Lead	12.30	2.31	13.17		102.00	41.95	2150
3	Tail	Tail	12.80	2.03	11.16		125.00	45.28	2650
4	Water	DisplacementFinal	8.34			42.00		240.30	0

## Job Fluid Details

Fluid	Type	Fluid	Product	Function	Conc.	Uom
2	Lead	Lead	ASTM TYPE IL	Cement	100.00	%
2	Lead	Lead	A-10	Accelerator	5.00	%BWOB
2	Lead	Lead	A-2	Accelerator	3.00	lb/sk
2	Lead	Lead	A-7P	Accelerator	2.00	lb/sk
2	Lead	Lead	IntegraSeal POLI	LostCirculation	0.25	lb/sk
2	Lead	Lead	STATIC FREE	Other	0.01	lb/sk
2	Lead	Lead	XCem-311	Defoamer	0.30	%BWOB
3	Tail	Tail	ASTM TYPE IL	Cement	100.00	%
3	Tail	Tail	A-10	Accelerator	5.00	%BWOB
3	Tail	Tail	A-2	Accelerator	2.00	lb/sk
3	Tail	Tail	A-7P	Accelerator	2.00	lb/sk
3	Tail	Tail	IntegraSeal POLI	LostCirculation	0.25	lb/sk
3	Tail	Tail	STATIC FREE	Other	0.01	lb/sk
3	Tail	Tail	XCem-311	Defoamer	0.30	%BWOB

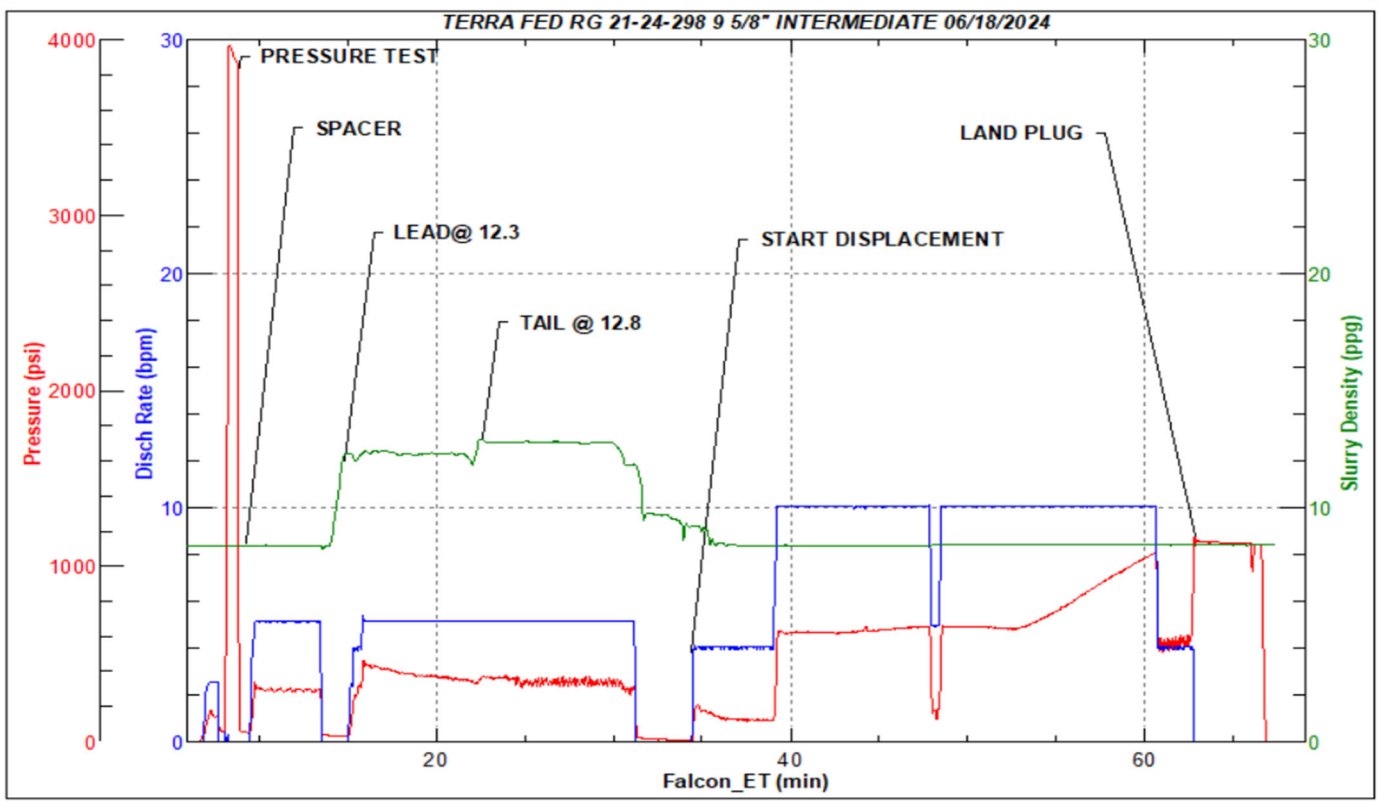
## Job Logs

Line	Event	Date (MM/DD/YY)	Time (HH:MM)	Density (lb/gal)	Pump Rate (bpm)	Pump Volume (bbls)	Pipe Pressure (psi)	Comment
1	ARRIVED ON LOCATION	6/18/2024	02:00					ARRIVED ON LOCATION PER CUSTOMER REQUEST 02:00
2	HAZARD ASSESMENT	6/18/2024	02:05					
3	SPOT EQUIPMENT	6/18/2024	02:10					
4	PRE RIG UP SAFETY MEETING	6/18/2024	02:15					
5	RIGGED UP	6/18/2024	03:00					
6	PRE JOB SAFETY MEETING	6/18/2024	09:15					
7	STAB CEMENT HEAD	6/18/2024	09:30					
8	START JOB	6/18/2024	09:50					START JOB
9	PRESSURE TEST LINES 3000PSI	6/18/2024	09:52	8.34	1	1	3000	PRESSURE TEST LINES 3000 PSI
10	20 BBL FRESH WATER SPACER	6/18/2024	09:58	8.34	5	20	305	20 BBL FRESH WATER SPACER AHEAD
11	START 41.9 BBL LEAD SLURRY @ 12.3	6/18/2024	10:02	12.3	5	1	380	START 41.9 BBL LEAD SLURRY @ 12.3 (2.31,13.17) 102 SACKS TOTAL
12	END OF LEAD SLURRY	6/18/2024	10:11	12.3	5	41.9	350	END OF LEAD SLURRY
13	START 45.3 BBL TAIL SLURRY @ 12.8	6/18/2024	10:11	12.8	5	1	359	START 45.3 BBL TAIL SLURRY @ 12.8 (2.03,11.16) 125 SACKS TOTAL
14	END OF TAIL SLURRY	6/18/2024	10:20	12.8	5	45.3	361	END OF TAIL SLURRY
15	SHUTDOWN/ DROP TOP PLUG	6/18/2024	10:20					SHUTDOWN/ DROP TOP PLUG
16	START 240.3 BBL FRESH WATER DISPLACEMENT	6/18/2024	10:23	8.34	4	1	206	START 240.3 BBL FRESH WATER DISPLACEMENT
17	50 BBL GONE ON DISPLACEMENT	6/18/2024	10:31	8.34	10	50	620	
18	100 BBL GONE ON DISPLACEMENT	6/18/2024	10:36	8.34	10	100	654	
19	150 BBL GONE ON DISPLACEMENT	6/18/2024	10:42	8.34	10	150	654	
20	200 BBL GONE ON DISPLACEMENT	6/18/2024	10:47	8.34	10	200	957	
21	PRESSURE BEFORE SLOWING RATE	6/18/2024	10:49	8.34	10	230.3	1018	PRESSURE BEFORE SLOWING RATE TO LAND PLUG - 1018
22	SLOW RATE PRESSURE	6/18/2024	10:49	8.34	4	230.3	518	SLOW RATE PRESSURE @ 4BPM - 518
23	PRESSURE BEFORE LANDING PLUG	6/18/2024	10:52	8.34	4	240	569	FINAL LIFT PRESSURE TO LAND PLUG - 569
24	LAND PLUG	6/18/2024	10:52	8.34	4	240.3	1145	LAND PLUG - 1145
25	CHECK FLOAT	6/18/2024	10:57	8.34				RETURNED 1.25 BBLS BACK UPON FLOAT CHECK
26	POST JOB SAFETY MEETING	6/18/2024	11:00					
27	RIGGED DOWN	6/18/2024	11:25					
28	PRE CONVOY SAFETY MEETING	6/18/2024	11:25					
29	LOCATION DEPARTURE	6/18/2024	11:30					
30	END OF JOB	6/18/2024	11:30					END OF JOB

# Pump Diagrams



JobMaster Program Version 5.01C1  
 Job Number: 91933  
 Customer: TERRA  
 Well Name: FEDERAL RG 21-24 298



Job Start: Tuesday, June 18, 2024