



# **Terra Energy Partners, LLC**

## **INTERMEDIATE POST JOB REPORT**

**FED RG 321-24-298 05-103-12577**  
**S:13 T:2S R:98W Rio Blanco CO**

CallSheet #: 91961  
Proposal #: 77105



**INTERMEDIATE Post Job Report**

**Attention:** Mr. Dustin Childers | (936) 524-8828 | dchilders@terraep.com  
Terra Energy Partners, LLC  
4828 Loop Central Dr., Suite 900 | Houston, TX 77081

---

Dear Mr. Dustin Childers,

Thank you for the opportunity to provide cementing services on this well. American Cementing strives to achieve complete customer satisfaction. If you have any questions regarding the services or data provided, please contact American Cementing at any time.

Sincerely,

**Addison Kneale**

Field Engineer I | (904) 228-9560 | addison.kneale@americacementing.com

**Field Office**      28730 US-6, Rifle, CO 81650  
Phone: (970) 657-1187

## Job Details & Summary

### Geometry

Type	Function	OD (in)	ID (in)	Weight (lb/ft)	Thread	Top (ft)	Bottom (ft)	Excess (%)
Casing	Outer	13.375	12.615	54.5	n/a	0	1380	0
Open Hole	Outer	n/a	12.25	n/a	n/a	1380	2677	50
Open Hole	Outer	n/a	12.25	n/a	n/a	2677	3206	50
Casing	Inner	9.625	8.921	36	n/a	0	3196	0

### Equipment / People

Unit Type	Unit	Power Unit	Employee #1
Cement Trailer Float	CTF-249	TRC-202	Daniel Balint
Cement Pump Float	CPF-052	TRH-964	James Lujan
Light Duty Vehicles	LDV-147		Eric Brown

### Timing

Event	Date/Time
ERTS	06/25/2024 00:30
Call Out	6/24/2024 17:00
Depart Facility	6/24/2024 22:00
On Location	6/25/2024 00:00
Rig Up Iron	6/25/2024 00:45
Job Started	6/25/2024 08:06
Job Completed	6/25/2024 09:11
Rig Down Iron	6/25/2024 10:00
Depart Location	6/25/2024 10:30

### General Job Information

Metrics	Value
Well Fluid Density	8.9 lb/gal
Well Fluid Type	WBM
Rig Circulation Vol	430 bbls
Rig Circulation Time	1 hours
Calculated Displacement	243 bbls
Actual Displacement	243 bbls
Total Spacer to Surface	0 bbls
Total CMT to Surface	0 bbls
Well Topped Out	No
Top Out Volume	N/A bbls

### Job Details

Metrics	Value
Well Full Prior to Job	Yes
Well Fluid Density Into Well	8.9 lb/gal
Well Fluid Density Out of Well	8.9 lb/gal

### Job Details (cont.)

Metrics	Value
BHCT	87 °F
BHST	117 °F

### Water Analysis

Metrics	Value	Recommended
Water Source	None	
Temperature	75 °F	50-80 °F
pH Level	6	5.5-8.5
Chlorides	100 mg/L	0-3000 mg/L
Total Alkalinity	10	0-1000
Total Hardness	100 mg/L	0-500 mg/L
Carbonates	10 mg/L	0-100 mg/L
Sulfates	200 mg/L	0-1500 mg/L
Potassium	200 mg/L	0-3000 mg/L
Iron	0 mg/L	0-300 mg/L

### Circulation

Lost Circulation Experienced
No

### Job Execution Information

Fluid	Product	Function	Density (lb/gal)	Yield (ft <sup>3</sup> /sk)	Water Rq. (gal/sk)	Water Rq. (gal/bbl)	Volume (sks)	Volume (bbl)	Designed Top (ft)
1	Water	Flush	8.34			42.00		20.00	1938
2	Lead	Lead	12.30	2.31	13.17		102.00	41.95	2177
3	Tail	Tail	12.80	2.03	11.16		125.00	45.28	2677
4	Water	DisplacementFinal	8.34			42.00		243.00	0

### Job Fluid Details

Fluid	Type	Fluid	Product	Function	Conc.	Uom
2	Lead	Lead	ASTM TYPE IL	Cement	100.00	%
2	Lead	Lead	A-10	Accelerator	5.00	%BWOB
2	Lead	Lead	A-2	Accelerator	3.00	lb/sk
2	Lead	Lead	A-7P	Accelerator	2.00	lb/sk
2	Lead	Lead	IntegraSeal POLI	LostCirculation	0.25	lb/sk
2	Lead	Lead	STATIC FREE	Other	0.01	lb/sk
2	Lead	Lead	XCem-311	Defoamer	0.30	%BWOB
3	Tail	Tail	ASTM TYPE IL	Cement	100.00	%
3	Tail	Tail	A-10	Accelerator	5.00	%BWOB
3	Tail	Tail	A-2	Accelerator	2.00	lb/sk
3	Tail	Tail	A-7P	Accelerator	2.00	lb/sk
3	Tail	Tail	IntegraSeal POLI	LostCirculation	0.25	lb/sk
3	Tail	Tail	STATIC FREE	Other	0.01	lb/sk
3	Tail	Tail	XCem-311	Defoamer	0.30	%BWOB

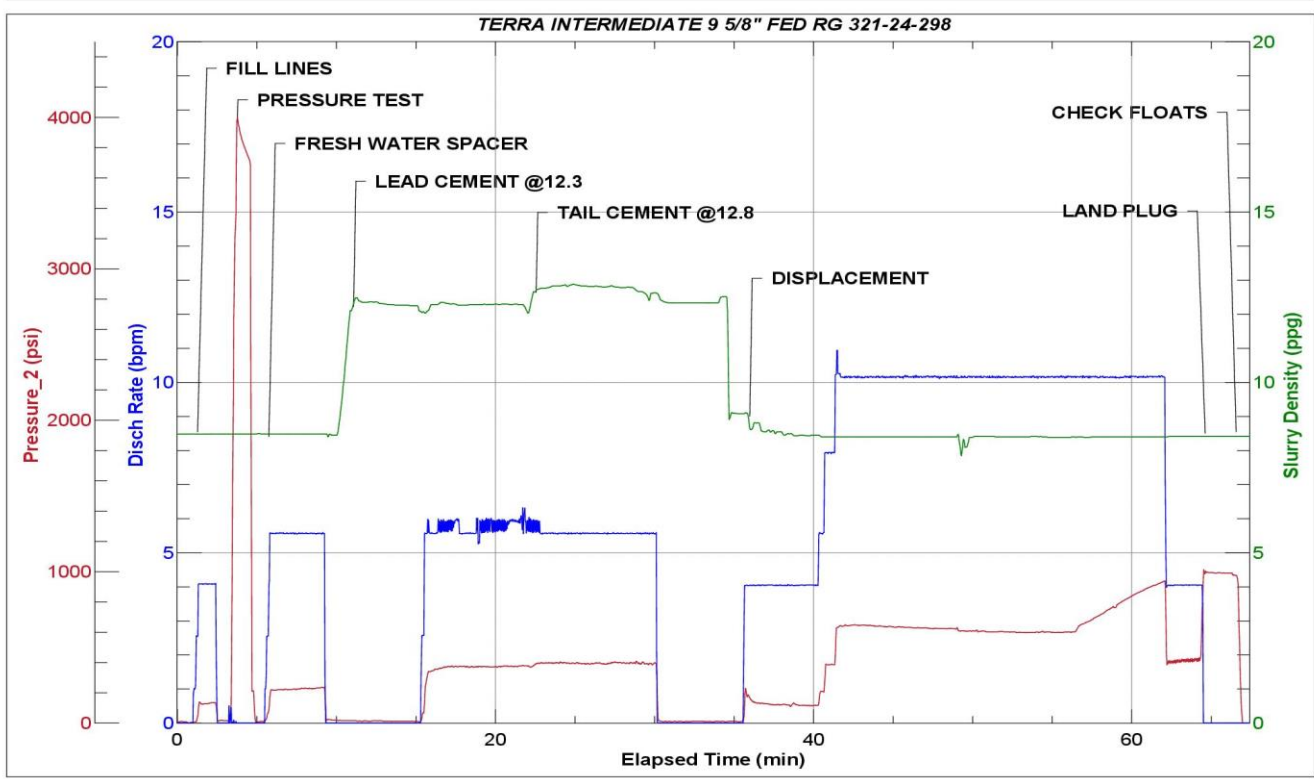
## Job Logs

Line	Event	Date (MM/DD/YY)	Time (HH:MM)	Density (lb/gal)	Pump Rate (bpm)	Pump Volume (bbls)	Pipe Pressure (psi)	Comment
1	Callout	6/24/2024	17:00					CREW CALLED IN TO INSPECT AND PRETRIP EQUIPMENT
2	Safety Meeting	6/24/2024	19:00					PRE CONVOY SAFETY MEETING
3	Depart Location	6/24/2024	22:00					DEPART RCO YARD FOR CUSTOMER LOCATION
4	Arrive On Location	6/25/2024	00:00					ARRIVE ON CUSTOMER LOCATION PER REQUEST
5	Safety Meeting	6/25/2024	00:15					PRE RIG UP SAFETY MEETING
6	Rig Up Iron	6/25/2024	00:45					RIG UP IRON AND HOSES
7	Safety Meeting	6/25/2024	07:48					PRE JOB SAFETY MEETING WITH COMPANY MAN AND RIG CREW
8	Start Job	6/25/2024	08:06					START JOB
9	Fill Lines	6/25/2024	08:07	8.34	4	5	141	FILL LINES WITH 5 BBLs FRESH WATER
10	Pressure Test Lines	6/25/2024	08:10	8.34	1	1	3810	PRESSURE TEST LINES TO 3810 PSI
11	Pump Spacer	6/25/2024	08:11	8.34	5	20	291	PUMP 10 BBLs FRESH WATER SPACER
12	Pump Lead Cement	6/25/2024	08:15	12.3	5	0	296	START MIXING AND PUMPING 42 BBLs OF LEAD CEMENT @12.3 PPG (2.31 YLD, 13.17 GPS) VERIFIED BY MUD SCALE
13	Pump Lead Cement	6/25/2024	08:26	12.3	5	42	384	42 BBLs LEAD CEMENT PUMPED
14	Pump Tail Cement	6/25/2024	08:27	12.8	5	0	392	START MIXING AND PUMPING 45 BBLs TAIL CEMENT @12.8 PPG (2.03 YLD, 11.16 GPS) VERIFIED BY MUD SCALE
15	Pump Tail Cement	6/25/2024	08:34	12.8	5	45	394	45 BBLs TAIL CEMENT PUMPED
16	Shutdown	6/25/2024	08:35					SHUT DOWN
17	Clean Pumps and Lines	6/25/2024	08:36					CLEAN UP PUMP AND PREPARE TO DROP THE PLUG
18	Drop Top Plug	6/25/2024	08:41					PLUG DROPPED. VERIFIED BY COMPANY MAN
19	Pump Displacement	6/25/2024	08:49	8.34	10	50	641	START 243 BBLs FRESH WATER DISPLACEMENT. 50 BBLs PUMPED
20	Pump Displacement	6/25/2024	08:54	8.34	10	50	622	100 BBLs FRESH WATER DISPLACEMENT PUMPED
21	Pump Displacement	6/25/2024	08:59	8.34	10	50	600	150 BBLs FRESH WATER DISPLACEMENT PUMPED
22	Pump Displacement	6/25/2024	09:04	8.34	10	83	940	233 BBLs FRESH WATER DISPLACEMENT PUMPED
23	Slow Pump Rate	6/25/2024	09:07	8.34	4	10	449	SLOW PUMP RATE AND PREPARE TO LAND THE PLUG
24	Land Plug	6/25/2024	09:09				993	PLUG LANDED. 449 FCP. 993 PSI BUMP PRESSURE
25	Check Floats	6/25/2024	09:11					.5 BBLs BACK UPON FLOAT CHECK. FLOATS HELD
26	Safety Meeting	6/25/2024	09:30					PRE RIG DOWN SAFETY MEETING
27	Rig Down Iron	6/25/2024	10:00					RIG DOWN IRON AND HOSES
28	Safety Meeting	6/25/2024	10:10					PRE CONVOY SAFETY MEETING
29	Depart Location	6/25/2024	10:30					DEPART CUSTOMER LOCATION FOR RCO YARD
30	End Job	6/25/2024	10:30					END JOB

# Pump Diagrams



JobMaster Program Version 5.01C1  
 Job Number: 91961  
 Customer: TERRA  
 Well Name: FED RG 321-24-298



Job Start: Tuesday, June 25, 2024