



Terra Energy Partners, LLC

SURFACE POST JOB REPORT

FED RG 321-24-298 05-103-12577
S:13 T:2S R:98W Rio Blanco CO

CallSheet #: 90385
Proposal #: 74538



SURFACE Post Job Report

Attention: Mr. Dustin Childers | (936) 524-8828 | dchilders@terraep.com
Terra Energy Partners, LLC
4828 Loop Central Dr., Suite 900 | Houston, TX 77081

Dear Mr. Dustin Childers,

Thank you for the opportunity to provide cementing services on this well. American Cementing strives to achieve complete customer satisfaction. If you have any questions regarding the services or data provided, please contact American Cementing at any time.

Sincerely,

Addison Kneale

Lab Technician II | (904) 228-9560 | addison.kneale@americacementing.com

Field Office 28730 US-6, Rifle, CO 81650
Phone: (970) 657-1187

Job Details & Summary

Geometry

Type	Function	OD (in)	ID (in)	Weight (lb/ft)	Thread	Top (ft)	Bottom (ft)	Excess (%)
Casing	Outer	20	19.5	53	BTC	0	80	0
Open Hole	Outer	n/a	17.5	n/a	n/a	80	1371	20
Casing	Inner	13.375	12.615	54.5	BTC	0	1375	0

Timing

Event	Date/Time
ERTS	02/26/2024 00:00
Call Out	2/25/2024 22:00
Depart Facility	2/26/2024 01:00
On Location	2/26/2024 05:30
Rig Up Iron	2/26/2024 06:00
Job Started	2/26/2024 06:45
Job Completed	2/26/2024 08:40
Rig Down Iron	2/26/2024 09:45
Depart Location	2/26/2024 10:00

Equipment / People

Unit Type	Unit	Power Unit	Employee #1
Field Storage Silo	FSS-470		
Cement Trailer Float	CTF-340	TRC-202	Chuck Martin
Light Duty Vehicles	LDV-128		Gerron McClure
Cement Pump Float	CPF-011	TRH-677	Christopher Lough

General Job Information

Metrics	Value
Well Fluid Density	9 lb/gal
Well Fluid Type	WBM
Rig Circulation Vol	382 bbls
Rig Circulation Time	1 hours
Calculated Displacement	206.8 bbls
Actual Displacement	206 bbls
Total Spacer to Surface	20 bbls
Total CMT to Surface	40 bbls
Well Topped Out	No
Top Out Volume	N/A bbls

Job Details

Metrics	Value
Well Full Prior to Job	Yes
Well Fluid Density Into Well	9 lb/gal
Well Fluid Density Out of Well	9 lb/gal

Job Details (cont.)

Metrics	Value
BHCT	84 °F
BHST	102 °F

Water Analysis

Metrics	Value	Recommended
Water Source	None	
Temperature	68 °F	50-80 °F
pH Level	6	5.5-8.5
Chlorides	200 mg/L	0-3000 mg/L
Total Alkalinity	100	0-1000
Total Hardness	10 mg/L	0-500 mg/L
Carbonates	10 mg/L	0-100 mg/L
Sulfates	100 mg/L	0-1500 mg/L
Potassium	200 mg/L	0-3000 mg/L
Iron	10 mg/L	0-300 mg/L

Circulation

Lost Circulation Experienced
No

Job Execution Information

Fluid	Product	Function	Density (lb/gal)	Yield (ft ³ /sk)	Water Rq. (gal/sk)	Water Rq. (gal/bbl)	Volume (sks)	Volume (bbl)	Designed Top (ft)
1	Water	Flush	8.34			42.00		20.00	0
2	Lead	Lead	12.30	2.31	13.16		519.00	213.43	0
3	Water	DisplacementFinal	8.34			42.00		206.80	0

Job Fluid Details

Fluid	Type	Fluid	Product	Function	Conc.	Uom
2	Lead	Primary	ASTM TYPE IL	Cement	100.00	%
2	Lead	Primary	A-10	Accelerator	5.00	%BWOB
2	Lead	Primary	A-2	Accelerator	3.00	lb/sk
2	Lead	Primary	A-7P	Accelerator	2.00	lb/sk
2	Lead	Primary	IntegraSeal POLI	LostCirculation	0.25	lb/sk
2	Lead	Primary	STATIC FREE	Other	0.01	lb/sk
2	Lead	Primary	XCem-308	Defoamer	0.30	%BWOB

Job Logs

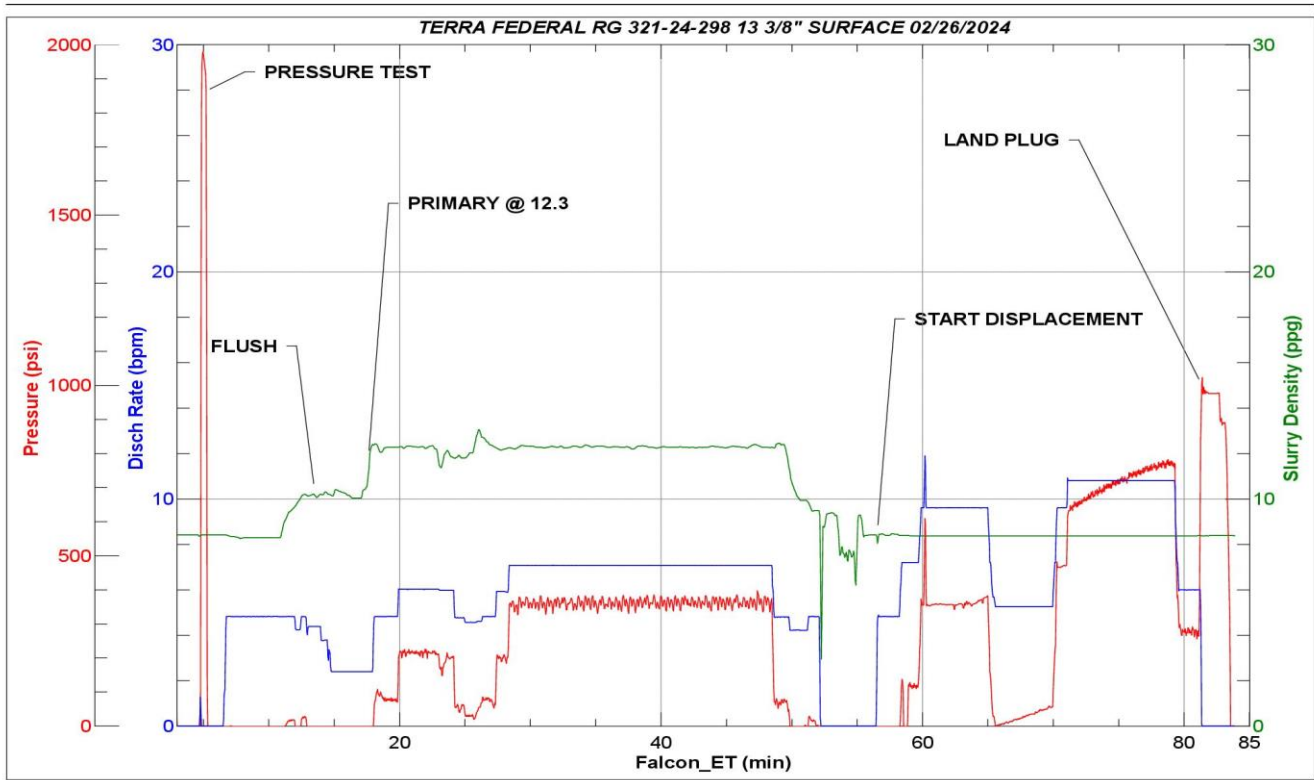
Line	Event	Date (MM/DD/YY)	Time (HH:MM)	Density (lb/gal)	Pump Rate (bpm)	Pump Volume (bbls)	Pipe Pressure (psi)	Comment
1	ARRIVED ON LOCATION	2/26/2024	05:30					ARRIVED ON LOCATION PER CUSTOMER REQUEST 05:30
2	HAZARD ASSESMENT	2/26/2024	05:35					
3	SPOT EQUIPMENT	2/26/2024	05:40					
4	PRE RIG UP SAFETY MEETING	2/26/2024	05:45					
5	RIGGED UP	2/26/2024	06:15					
6	PRE JOB SAFETY MEETING	2/26/2024	06:35					
7	STAB HEAD	2/26/2024	06:40					
8	START JOB	2/26/2024	06:45					START JOB
9	PRESSURE TEST LINES 2000	2/26/2024	06:47	8.34	1	1	2000	PRESSURE TEST LINES 2000 PSI
10	20 BBL FRESH WATER SPACER	2/26/2024	06:50	8.34	5	20	228	20 BBL FRESH WATER SPACER
11	START PRIMARY SLURRY @ 12.3	2/26/2024	07:02	12.3	5	1	196	START 213.5 BBL PRIMARY SLURRY @ 12.3 (2.31,13,16) 519 SACKS
12	50 BBL GONE ON PRIMARY	2/26/2024	07:11	12.3	6	50	285	
13	100 BBL GONE ON PRIMARY	2/26/2024	07:17	12.3	6	100	211	
14	150 BBL GONE ON PRIMARY	2/26/2024	07:24	12.3	6	150	342	
15	200 BBL GONE ON PRIMARY	2/26/2024	07:33	12.3	6	200	370	
16	END OF PRIMARY	2/26/2024	07:35	12.3	4	213.5	196	END OF PRIMARY SLURRY
17	SHUTDOWN/ DROP TOP PLUG	2/26/2024	07:36					SHUTDOWN/ DROP TOP PLUG
18	START 206.8 BBL FRESH WATER DISPLACEMENT	2/26/2024	07:41	8.34	4	1	19	START 206.8 BBL FRESH WATER DISPLACEMENT
19	50 BBL GONE ON DISPLACEMENT	2/26/2024	07:46	8.34	10	50	490	
20	100 BBL GONE ON DISPLACEMENT	2/26/2024	07:54	8.34	10	100	596	
21	150 BBL GONE ON DISPLACEMENT	2/26/2024	07:59	8.34	10	150	753	
22	PRESSURE BEFORE SLOWING RATE	2/26/2024	08:02	8.34	10	196	792	PRESSURE BEFORE SLOWING RATE - 792
23	SLOW RATE PRESSURE	2/26/2024	08:02	8.34	6	196	327	SLOW RATE PRESSURE @ 6BPM -
24	PRESSURE BEFORE LANDING PLUG	2/26/2024	08:04	8.34	6	206	330	FINAL LIFT PRESSURE TO LAND PLUG - 330
25	LAND PLUG	2/26/2024	08:04	8.34	6	206	1050	LAND PLUG - 1050
26	CASING TEST 1000 PSI FOR 30 MINUTES	2/26/2024	08:09	8.34	1	1	1000	CASING TEST 30 MINUTES AT 1000 PSI/BEGINNING LOW PRESSURE 1048 - ENDING HIGH PRESSURE - 1080
27	END OF CEMENTING SERVICES	2/26/2024	08:40					END OF CEMENTING SERVICES/ CIRCULATED 20 BBL FRESH WATER SPACER AS WELL AS 40 BBLs OR 98 SACKS OF CEMENT TO SURFACE PIT
28	POST JOB SAFETY MEETING	2/26/2024	08:45					

Line	Event	Date (MM/DD/YY)	Time (HH:MM)	Density (lb/gal)	Pump Rate (bpm)	Pump Volume (bbbls)	Pipe Pressure (psi)	Comment
29	RIGGED DOWN	2/26/2024	09:45					
30	PRE CONVOY SAFETY MEETING	2/26/2024	09:55					
31	LOCATION DEPARTURE	2/26/2024	10:00					
32	END OF JOB	2/26/2024	10:00					END OF JOB

Pump Diagrams



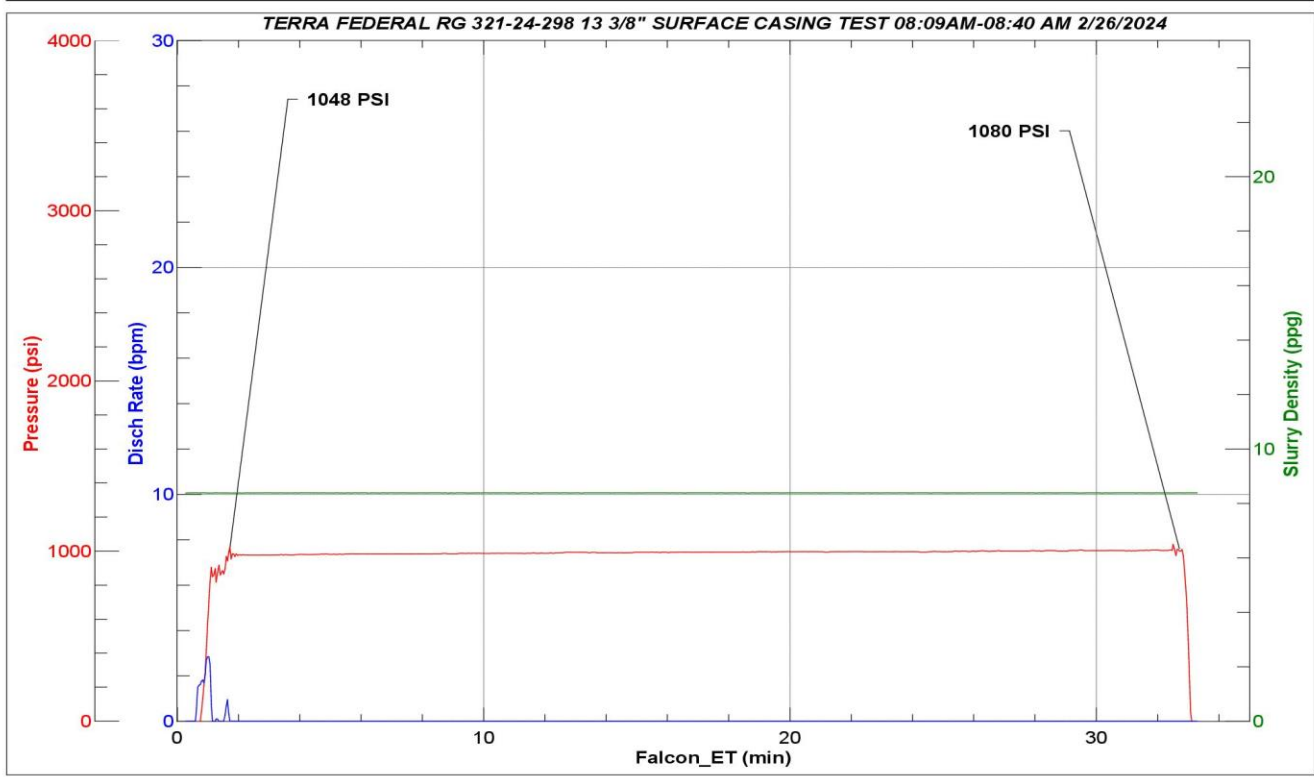
JobMaster Program Version 5.01C1
 Job Number: 90385
 Customer: TERRA
 Well Name: FEDERAL RG 321-24 298



Job Start: Monday, February 26, 2024



JobMaster Program Version 5.01C1
Job Number: 90385
Customer: TERRA
Well Name: FEDERAL RG 321-24 298



Job Start: Monday, February 26, 2024