



---

# **Terra Energy Partners, LLC**

## **SURFACE POST JOB REPORT**

**FED RG 421-24-298 05-103-12571**  
**S:13 T:2S R:98W Rio Blanco CO**

CallSheet #: 90384  
Proposal #: 74536



**SURFACE Post Job Report**

**Attention:** Mr. Dustin Childers | (936) 524-8828 | dchilders@terraep.com  
Terra Energy Partners, LLC  
4828 Loop Central Dr., Suite 900 | Houston, TX 77081

---

Dear Mr. Dustin Childers,

Thank you for the opportunity to provide cementing services on this well. American Cementing strives to achieve complete customer satisfaction. If you have any questions regarding the services or data provided, please contact American Cementing at any time.

Sincerely,

**Addison Kneale**

Lab Technician II | (904) 228-9560 | addison.kneale@americacementing.com

**Field Office**      28730 US-6, Rifle, CO 81650  
Phone: (970) 657-1187

## Job Details & Summary

### Geometry

Type	Function	OD (in)	ID (in)	Weight (lb/ft)	Thread	Top (ft)	Bottom (ft)	Excess (%)
Casing	Outer	20	19.5	53	n/a	0	80	0
Open Hole	Outer	n/a	17.5	n/a	n/a	80	1374	40
Casing	Inner	13.375	12.615	54.5	n/a	0	1379	0

### Timing

Event	Date/Time
ERTS	02/25/2024 07:00
Call Out	2/24/2024 11:45
Depart Facility	2/25/2024 05:00
On Location	2/25/2024 07:00
Rig Up Iron	2/25/2024 08:00
Job Started	2/25/2024 08:30
Job Completed	2/25/2024 10:30
Rig Down Iron	2/25/2024 11:30
Depart Location	2/25/2024 11:45

### Equipment / People

Unit Type	Unit	Power Unit	Employee #1
Field Storage Silo	FSS-438		
Cement Trailer Float	CTF-555	TRC-202	Chuck Martin
Cement Pump Float	CPF-011	TRH-677	Christopher Lough
Light Duty Vehicles	LDV-128		Gerron McClure
Light Duty Vehicles	LDV-087		Eric Brown

### General Job Information

Metrics	Value
Well Fluid Density	9 lb/gal
Well Fluid Type	WBM
Rig Circulation Vol	500 bbls
Rig Circulation Time	2 hours
Calculated Displacement	206 bbls
Actual Displacement	206 bbls
Total Spacer to Surface	20 bbls
Total CMT to Surface	60 bbls
Well Topped Out	No
Top Out Volume	N/A bbls

### Job Details

Metrics	Value
Well Full Prior to Job	Yes
Well Fluid Density Into Well	9 lb/gal
Well Fluid Density Out of Well	9 lb/gal

### Job Details (cont.)

Metrics	Value
BHCT	84 °F
BHST	102 °F

### Water Analysis

Metrics	Value	Recommended
Water Source	None	
Temperature	65 °F	50-80 °F
pH Level	6	5.5-8.5
Chlorides	200 mg/L	0-3000 mg/L
Total Alkalinity	100	0-1000
Total Hardness	10 mg/L	0-500 mg/L
Carbonates	10 mg/L	0-100 mg/L
Sulfates	100 mg/L	0-1500 mg/L
Potassium	200 mg/L	0-3000 mg/L
Iron	10 mg/L	0-300 mg/L

### Circulation

Lost Circulation Experienced
No

### Job Execution Information

Fluid	Product	Function	Density (lb/gal)	Yield (ft <sup>3</sup> /sk)	Water Rq. (gal/sk)	Water Rq. (gal/bbl)	Volume (sks)	Volume (bbl)	Designed Top (ft)
1	Water	Flush	8.34			42.00		20.00	0
2	Lead	Lead	12.30	2.31	13.16		597.00	245.51	0
3	Water	DisplacementFinal	8.34			42.00		206.00	0

### Job Fluid Details

Fluid	Type	Fluid	Product	Function	Conc.	Uom
2	Lead	Lead	ASTM TYPE IL	Cement	100.00	%
2	Lead	Lead	A-10	Accelerator	5.00	%BWOB
2	Lead	Lead	A-2	Accelerator	3.00	lb/sk
2	Lead	Lead	A-7P	Accelerator	2.00	lb/sk
2	Lead	Lead	IntegraSeal POLI	LostCirculation	0.25	lb/sk
2	Lead	Lead	STATIC FREE	Other	0.01	lb/sk
2	Lead	Lead	XCem-308	Defoamer	0.30	%BWOB

## Job Logs

Line	Event	Date (MM/DD/YY)	Time (HH:MM)	Density (lb/gal)	Pump Rate (bpm)	Pump Volume (bbls)	Pipe Pressure (psi)	Comment
1	Arrive On Location	2/25/2024	07:00					ARRIVED TO LOCATION PER CUSTOMER REQUEST 0700
2	HAZARD ASSESMENT	2/25/2024	07:05					
3	SPOT EQUIPMENT	2/25/2024	07:10					
4	PRERIG UP SAFETY MEETING	2/25/2024	07:15					
5	Rig Up Iron	2/25/2024	08:00					
6	STAB HEAD	2/25/2024	08:15					
7	Start Job	2/25/2024	08:30					START JOB
8	Pressure Test Lines	2/25/2024	08:32	8.34	1	5	3000	PRESSURE TEST LINES 3000
9	20 BBL FW SPACER	2/25/2024	08:37	8.34	5	20		20 BBL FRESH WATER SPACER
10	START OF PRIMARY SLURRY	2/25/2024	08:43	12.3	4	1		START 245 BBL PRIMARY CEMENT SLURRY 12.3 (2.31, 13.16) 597 TOTAL SACKS
11	50 BBLs PRIMARY SLURRY	2/25/2024	08:50	12.3	7	50	485	
12	100 BBLs PRIMARY SLURRY	2/25/2024	08:58	12.3	7	100	473	
13	150 BBLs PRIMARY SLURRY	2/25/2024	09:04	12.3	7	150	450	
14	200 BBLs PRIMARY SLURRY	2/25/2024	09:11	12.3	7	200	484	
15	END OF PRIMARY SLURRY	2/25/2024	09:21	12.3	4.8	245	149	END OF 245 BBL PRIMARY CEMENT
16	SHUT DOWN/DROP PLUG	2/25/2024	09:22					SHUT DOWN AND DROP TOP PLUG
17	START 206 FW DISPLACEMENT	2/25/2024	09:25	8.34	6	1	178	START OF 206 BBL FRESH WATER DISPLACEMENT
18	50 BBLs FW DISPLACEMENT	2/25/2024	09:33	8.34	9.6	50	524	
19	100 BBL FW DISPLACEMENT	2/25/2024	09:39	8.34	9.6	100	606	
20	150 BBLs FW DISPLACEMENT	2/25/2024	09:44	8.34	9.6	150	712	
21	PRESSURE BEFORE SLOW DOWN	2/25/2024	09:48	8.34	9.6	196	788	PRESSURE BEFORE SLOWING RATE 788
22	PRESSURE AFTER SLOW DOWN	2/25/2024	09:48	8.34	6	196	432	SLOW RATE PRESSURE 432
23	PRESSURE TO LAND PLUG	2/25/2024	09:52	8.34	6	206	416	FINAL LIFT PRESSURE TO LAND THE PLUG 416
24	Land Plug	2/25/2024	09:52	8.34		206		LAND PLUG 1338
25	Check Floats	2/25/2024	09:54					BBLs RETURNED UPON FLOAT CHECK .75 BBLs
26	30 MIN CASING TEST 1000PSI	2/25/2024	09:57	8.34	2	1	1000	CASING TEST 1000 PSI FOR 30 MINS HIGH 1070 LOW 1015
27	END OF CEMENTING SERVICES	2/25/2024	10:30					END OF CEMENTING SERVICES/ CIRCULATED 60BBLs TO SURFACE PIT
28	POST JOB PRERIG DOWN SAFETY MEETING	2/25/2024	10:35					
29	Rig Down Iron	2/25/2024	10:40					
30	PRECONVOY SAFETY MEETING	2/25/2024	11:40					

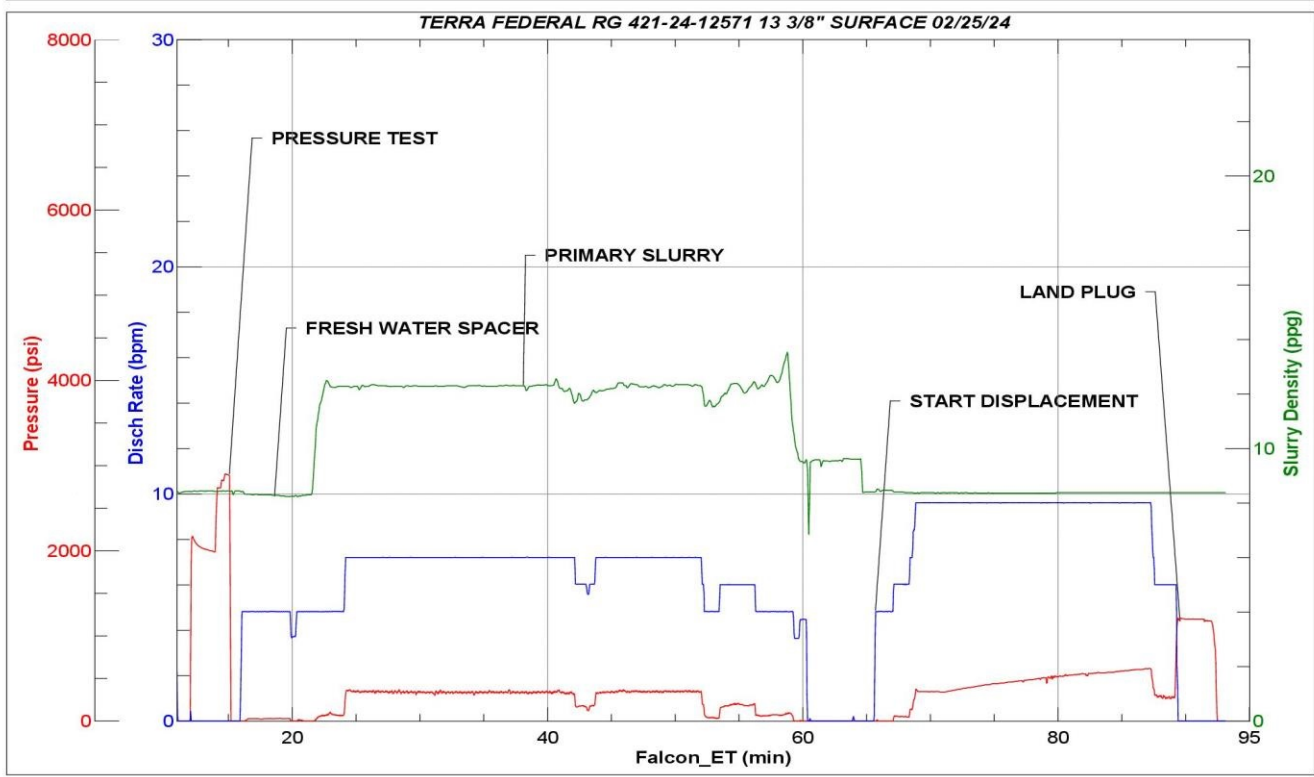


Line	Event	Date (MM/DD/YY)	Time (HH:MM)	Density (lb/gal)	Pump Rate (bpm)	Pump Volume (bbls)	Pipe Pressure (psi)	Comment
31	Depart Location	2/25/2024	11:45					
32	End Job	2/25/2024	11:45					END JOB

# Pump Diagrams



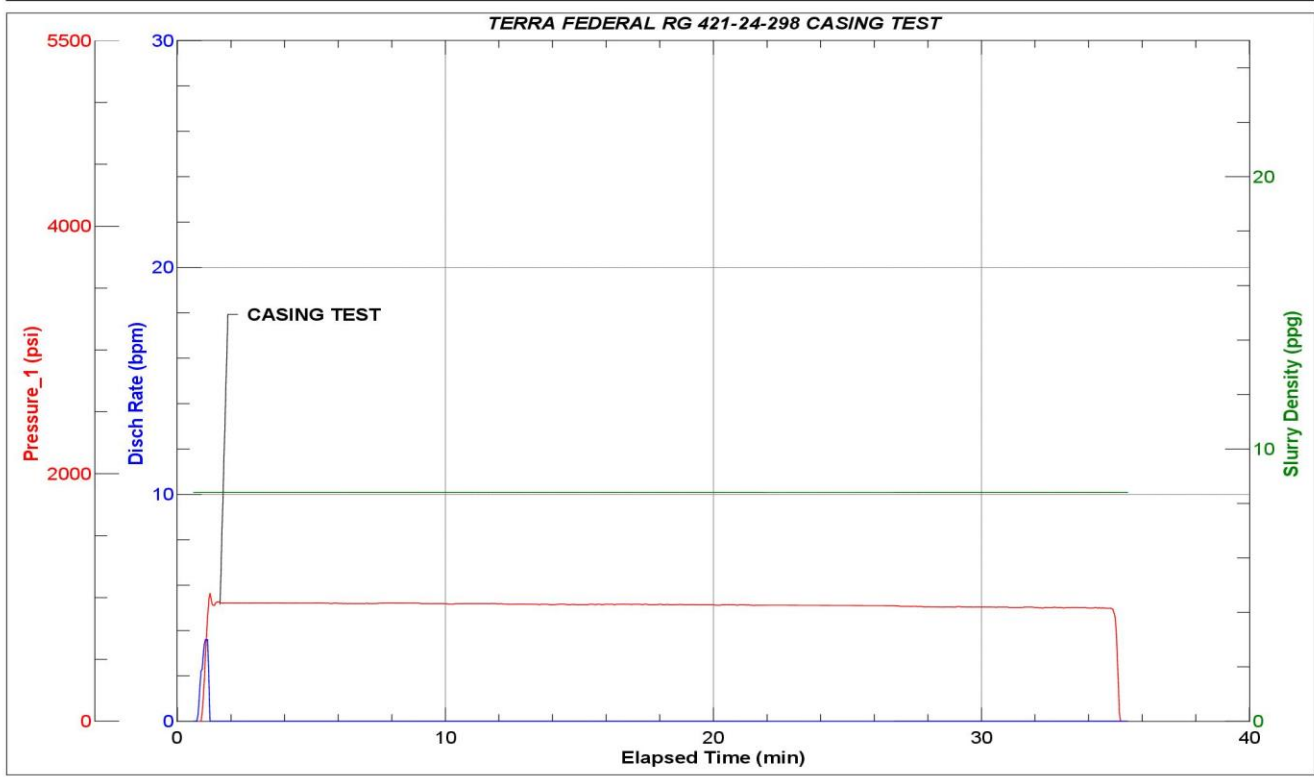
JobMaster Program Version 5.01C1  
Job Number: 90384  
Customer: TERRA  
Well Name: FEDERAL RG 421-24 298



Job Start: Sunday, February 25, 2024



JobMaster Program Version 5.01C1  
Job Number: 90384  
Customer: TERRA  
Well Name: FEDERAL RG 421-24 298



Job Start: Tuesday, February 27, 2024