



---

# **Terra Energy Partners, LLC**

## **LONG STRING POST JOB REPORT**

**FED RG 421-24-298 05-103-12571**  
**S:13 T:2S R:98W Rio Blanco CO**

CallSheet #: 91966  
Proposal #: 77108



**LONG STRING Post Job Report**

**Attention:** Mr. Dustin Childers | (936) 524-8828 | dchilders@terraep.com  
Terra Energy Partners, LLC  
4828 Loop Central Dr., Suite 900 | Houston, TX 77081

---

Dear Mr. Dustin Childers,

Thank you for the opportunity to provide cementing services on this well. American Cementing strives to achieve complete customer satisfaction. If you have any questions regarding the services or data provided, please contact American Cementing at any time.

Sincerely,

**Krystal Schell**

Field Engineer I | (719) 992-1830 | krystal.schell@americacementing.com

**Field Office**      28730 US-6, Rifle, CO 81650  
Phone: (970) 657-1187

## Job Details & Summary

### Geometry

Type	Function	OD (in)	ID (in)	Weight (lb/ft)	Thread	Top (ft)	Bottom (ft)	Excess (%)
Casing	Outer	9.625	8.921	36	LTC	0	3153	0
Open Hole	Outer	n/a	8.75	n/a	n/a	3212	7993	45
Open Hole	Outer	n/a	8.75	n/a	n/a	7993	11753	45
Casing	Inner	4.5	4	11.6	BTC	0	11747	0

### Equipment / People

Unit Type	Unit	Power Unit	Employee #1
Field Storage Silo	FSS-438		
Field Storage Silo	FSS-470		
Cement Trailer Float	CTF-263	TRC-195	Joshua Ashmore
Cement Pump Float	CPF-012	TRH-1137	Ryan Bonin
Light Duty Vehicles	LDV-128		Gerron McClure
Cement Utility Float	CUF-164	LDV-166	Daniel Balint

### Timing

Event	Date/Time
ERTS	07/08/2024 04:00
Call Out	7/7/2024 21:30
Depart Facility	7/8/2024 01:30
On Location	7/8/2024 04:00
Rig Up Iron	7/8/2024 05:00
Job Started	7/8/2024 06:53
Job Completed	7/8/2024 09:36
Rig Down Iron	7/8/2024 11:00
Depart Location	7/8/2024 11:15

### General Job Information

Metrics	Value
Well Fluid Density	10.5 lb/gal
Well Fluid Type	WBM
Rig Circulation Vol	651 bbls
Rig Circulation Time	2 hours
Calculated Displacement	181.5 bbls
Actual Displacement	181 bbls
Total Spacer to Surface	N/A bbls
Total CMT to Surface	N/A bbls
Well Topped Out	No
Top Out Volume	N/A bbls

### Job Details

Metrics	Value
Flare Prior to Job	No
Flare Prior to Job	N/A units
Flare During Job	No
Flare During Job	N/A units
Flare at End of Job	No
Flare at End of Job	N/A units
Well Full Prior to Job	Yes
Well Fluid Density Into Well	9.8 lb/gal
Well Fluid Density Out of Well	9.8 lb/gal

### Job Details (cont.)

Metrics	Value
BHCT	198 °F
BHST	262 °F

### Water Analysis

Metrics	Value	Recommended
Water Source	Upright Rig Tank	
Temperature	68 °F	50-80 °F
pH Level	6	5.5-8.5
Chlorides	200 mg/L	0-3000 mg/L
Total Alkalinity	100	0-1000
Total Hardness	10 mg/L	0-500 mg/L
Carbonates	10 mg/L	0-100 mg/L
Sulfates	100 mg/L	0-1500 mg/L
Potassium	200 mg/L	0-3000 mg/L
Iron	10 mg/L	0-300 mg/L

### Circulation

Lost Circulation Experienced
No

### Job Execution Information

Fluid	Product	Function	Density (lb/gal)	Yield (ft <sup>3</sup> /sk)	Water Rq. (gal/sk)	Water Rq. (gal/bbl)	Volume (sks)	Volume (bbl)	Designed Top (ft)
1	Water	Flush	8.34			42.00		10.00	6304
2	Lead	Lead	12.70	2.13	11.42		727.00	275.68	6430
3	Tail	Tail	13.50	2.01	9.72		884.00	316.45	7993
4	Displacement	DisplacementFinal	8.34			42.00		181.50	0

### Job Fluid Details

Fluid	Type	Fluid	Product	Function	Conc.	Uom
2	Lead	Lead	ASTM TYPE IL	Cement	100.00	%
2	Lead	Lead	A-2	Accelerator	0.10	%BWOB
2	Lead	Lead	FL-66	FluidLoss	0.20	%BWOB
2	Lead	Lead	GW-86	Viscosifier	0.05	%BWOB
2	Lead	Lead	IntegraSeal PHENO	LostCirculation	3.00	lb/sk
2	Lead	Lead	IntegraSeal POLI	LostCirculation	0.25	lb/sk
2	Lead	Lead	R-3	Retarder	0.75	%BWOB
2	Lead	Lead	STATIC FREE	Other	0.01	lb/sk
2	Lead	Lead	XCem-1009	Extender	10.00	lb/sk
2	Lead	Lead	XCem-311	Defoamer	0.30	%BWOB
3	Tail	Tail	CLASS G	Cement	70.00	%
3	Tail	Tail	FLY ASH (POZZOLAN)	Extender	30.00	%
3	Tail	Tail	BENTONITE	Viscosifier	8.00	%BWOB
3	Tail	Tail	FL-24	FluidLoss	0.40	%BWOB
3	Tail	Tail	GW-86	Viscosifier	0.10	%BWOB
3	Tail	Tail	IntegraSeal PHENO	LostCirculation	3.00	lb/sk
3	Tail	Tail	R-3	Retarder	0.30	%BWOB
3	Tail	Tail	S-8	StrengthRetgression	26.00	%BWOB
3	Tail	Tail	XCem-311	Defoamer	0.30	%BWOB

## Job Logs

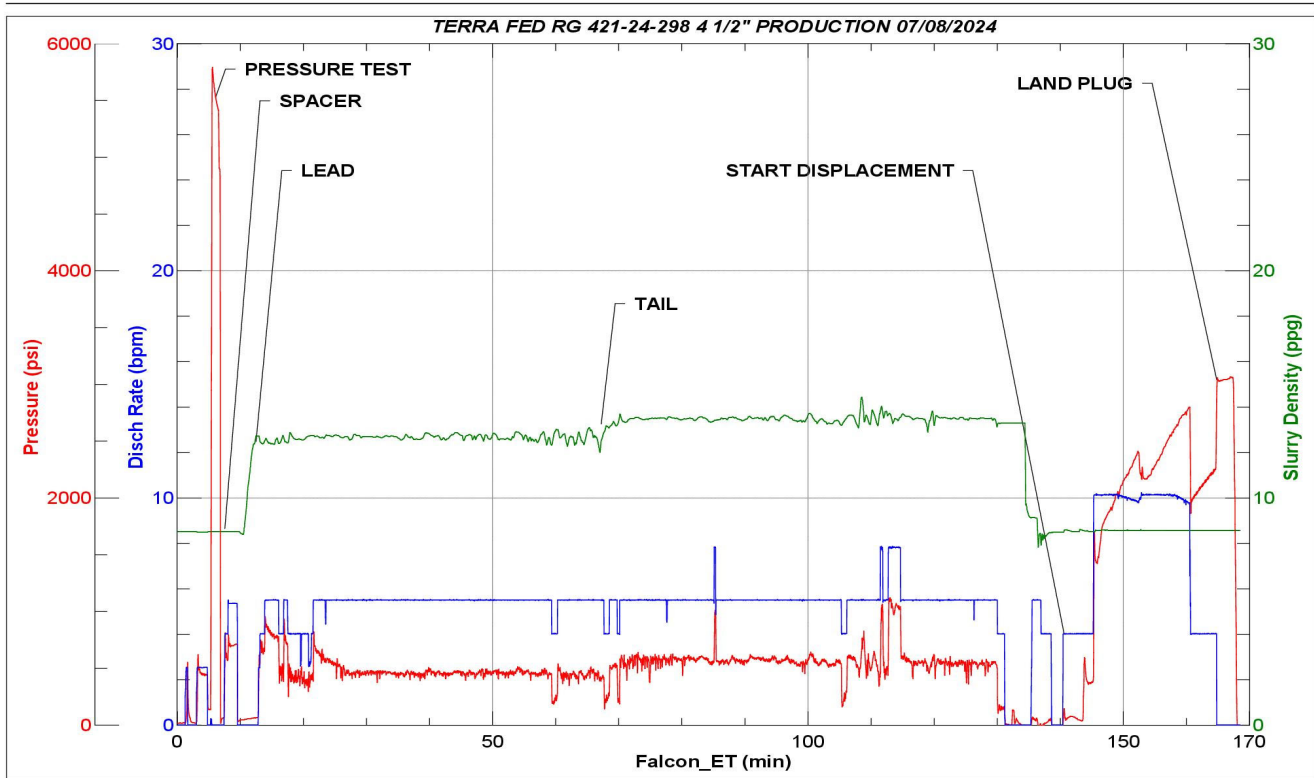
Line	Event	Date (MM/DD/YY)	Time (HH:MM)	Density (lb/gal)	Pump Rate (bpm)	Pump Volume (bbls)	Pipe Pressure (psi)	Comment
1	ARRIVED ON LOCATION	7/8/2024	04:00					ARRIVED ON LOCATION PER CUSTOMER REQUEST 04:00
2	HAZARD ASSESMENT	7/8/2024	04:05					
3	SPOT EQUIPMENT	7/8/2024	04:10					
4	PRE RIG UP SAFETY MEETING	7/8/2024	04:15					
5	RIGGED UP	7/8/2024	05:00					
6	PRE JOB SAFETY MEETING	7/8/2024	06:30					
7	STAB HEAD	7/8/2024	06:45					
8	START JOB	7/8/2024	06:53					START JOB
9	PRESSURE TEST LINES 5000 PSI	7/8/2024	06:55	8.34	1	1	5000	PRESSURE TEST LINES 5000 PSI
10	10 BBL FRESH WATER SPACER	7/8/2024	06:58	8.34	5	10	830	10 BBL FRESH WATER SPACER
11	START 275.7 BBL LEAD CEMENT @ 12.7	7/8/2024	07:02	12.7	5	1	471	START 275.7 BBL LEAD SLURRY @ 12.7 (2.13,11.42) 727 TOTAL SACKS
12	50 BBL GONE ON LEAD	7/8/2024	07:13	12.7	6	50	558	
13	100 BBL GONE ON LEAD	7/8/2024	07:25	12.7	6	100	469	
14	150 BBL GONE ON LEAD	7/8/2024	07:35	12.7	6	150	478	
15	200 BBL GONE ON LEAD	7/8/2024	07:44	12.7	6	200	476	
16	250 BBL GONE ON LEAD	7/8/2024	07:52	12.7	6	250	473	
17	END OF LEAD CEMENT	7/8/2024	08:00	12.7	5	275.7	383	END OF LEAD SLURRY
18	START 316.4 BBL TAIL SLURRY @ 13.5	7/8/2024	08:00	13.5	5	1	553	START 316.4 BBL TAIL SLURRY @ 13.5 (2.01,9.72) 884 TOTAL SACKS
19	50 BBL GONE ON TAIL	7/8/2024	08:09	13.5	6	50	608	
20	100 BBL GONE ON TAIL	7/8/2024	08:19	13.5	6	100	546	
21	150 BBL GONE ON TAIL	7/8/2024	08:28	13.5	6	150	554	
22	200 BBL GONE ON TAIL	7/8/2024	08:37	13.5	6	200	569	
23	250 BBL GONE ON TAIL	7/8/2024	08:46	13.5	6	250	662	
24	300 BBL GONE ON TAIL	7/8/2024	08:55	13.5	6	300	564	
25	END OF TAIL SLURRY	7/8/2024	09:03	13.5	4	316.4	182	END OF TAIL SLURRY
26	SHUTDOWN/ WASH LINES/ DROP TOP PLUG	7/8/2024	09:03					SHUTDOWN/ WASH LINES/ DROP TOP PLUG
27	START 181.5 BBL FRESH WATER DISPLACEMENT	7/8/2024	09:12	8.34	4	1	130	START 181.5 BBL FRESH WATER DISPLACEMENT
28	50 BBL GONE ON DISPLACEMENT	7/8/2024	09:21	8.34	10	50	2000	
29	100 BBL GONE ON DISPLACEMENT	7/8/2024	09:26	8.34	10	100	2184	
30	150 BBL GONE ON DISPLACEMENT	7/8/2024	09:30	8.34	10	150	2690	
31	PRESSURE BEFORE SLOWING RATE	7/8/2024	09:33	8.34	10	171.5	2839	PRESSURE BEFORE SLOWING RATE - 2839
32	SLOW RATE PRESSURE	7/8/2024	09:33	8.34	4	171.5	1996	SLOW RATE PRESSURE - 1996
33	PRESSURE BEFORE LANDING PLUG	7/8/2024	09:36	8.34	4	181.5	2286	FINAL LIFT PRESSURE TO LAND PLUG - 2286
34	LAND PLUG	7/8/2024	09:36	8.34	4	181.5	3030	LAND PLUG - 3030
35	CHECK FLOAT	7/8/2024	09:40			2		RETURNED 2 BBLs BACK UPON CHECKING FLOAT
36	END OF CEMENTING SERVICES	7/8/2024	09:40					END OF CEMENTING SERVICES
37	POST JOB SAFETY MEETING	7/8/2024	09:45					
38	RIGGED DOWN	7/8/2024	11:00					
39	PRE CONVOY SAFETY MEETING	7/8/2024	11:15					

Line	Event	Date (MM/DD/YY)	Time (HH:MM)	Density (lb/gal)	Pump Rate (bpm)	Pump Volume (bbls)	Pipe Pressure (psi)	Comment
40	LOCATION DEPARTURE	7/8/2024	11:30					
41	END OF JOB	7/8/2024	11:30					END OF JOB

## Pump Diagrams



JobMaster Program Version 5.01C1  
Job Number: 91966  
Customer: TERRA  
Well Name: FEDERAL RG 421-24 298



Job Start: Monday, July 08, 2024