



Terra Energy Partners, LLC

INTERMEDIATE POST JOB REPORT

FED RG 421-24-298 05-103-12571
S:13 T:2S R:98W Rio Blanco CO

CallSheet #: 91965
Proposal #: 77107



INTERMEDIATE Post Job Report

Attention: Mr. Dustin Childers | (936) 524-8828 | dchilders@terraep.com
Terra Energy Partners, LLC
4828 Loop Central Dr., Suite 900 | Houston, TX 77081

Dear Mr. Dustin Childers,

Thank you for the opportunity to provide cementing services on this well. American Cementing strives to achieve complete customer satisfaction. If you have any questions regarding the services or data provided, please contact American Cementing at any time.

Sincerely,

Addison Kneale

Field Engineer I | (904) 228-9560 | addison.kneale@americacementing.com

Field Office 28730 US-6, Rifle, CO 81650
Phone: (970) 657-1187

Job Details & Summary

Geometry

Type	Function	OD (in)	ID (in)	Weight (lb/ft)	Thread	Top (ft)	Bottom (ft)	Excess (%)
Casing	Outer	13.375	12.615	54.5	n/a	0	1374	0
Open Hole	Outer	n/a	12.25	n/a	n/a	1367	3254	50
Open Hole	Outer	n/a	12.25	n/a	n/a	2712	3254	50
Casing	Inner	9.625	8.921	36	LTC	0	3248.06	0

Equipment / People

Unit Type	Unit	Power Unit	Employee #1
Cement Trailer Float	CTF-273	TRC-425	Duewayne Jackson
Light Duty Vehicles	LDV-128		Gerron McClure
Cement Pump Float	CPF-053	TRH-1140	James Lujan

Timing

Event	Date/Time
ERTS	07/02/2024 08:00
Call Out	7/2/2024 00:30
Depart Facility	7/2/2024 05:30
On Location	7/2/2024 08:00
Rig Up Iron	7/2/2024 09:00
Job Started	7/2/2024 12:17
Job Completed	7/2/2024 13:15
Rig Down Iron	7/2/2024 14:00
Depart Location	7/2/2024 14:30

General Job Information

Metrics	Value
Well Fluid Density	9 lb/gal
Well Fluid Type	WBM
Rig Circulation Vol	200 bbls
Rig Circulation Time	2 hours
Calculated Displacement	247.5 bbls
Actual Displacement	247.5 bbls
Total Spacer to Surface	N/A bbls
Total CMT to Surface	N/A bbls
Well Topped Out	No
Top Out Volume	N/A bbls

Job Details

Metrics	Value
Well Full Prior to Job	Yes
Well Fluid Density Into Well	9 lb/gal
Well Fluid Density Out of Well	9 lb/gal

Job Details (cont.)

Metrics	Value
BHCT	87 °F
BHST	117 °F

Water Analysis

Metrics	Value	Recommended
Water Source	None	
Temperature	68 °F	50-80 °F
pH Level	6	5.5-8.5
Chlorides	200 mg/L	0-3000 mg/L
Total Alkalinity	100	0-1000
Total Hardness	10 mg/L	0-500 mg/L
Carbonates	10 mg/L	0-100 mg/L
Sulfates	100 mg/L	0-1500 mg/L
Potassium	200 mg/L	0-3000 mg/L
Iron	10 mg/L	0-300 mg/L

Circulation

Lost Circulation Experienced
No

Job Execution Information

Fluid	Product	Function	Density (lb/gal)	Yield (ft ³ /sk)	Water Rq. (gal/sk)	Water Rq. (gal/bbl)	Volume (sks)	Volume (bbl)	Designed Top (ft)
1	Water	Flush	8.34			42.00		20.00	1973
2	Lead	Lead	12.30	2.31	13.17		102.00	41.95	2212
3	Tail	Tail	12.80	2.03	11.16		125.00	45.28	2712
4	Water	DisplacementFinal	8.34			42.00		247.50	0

Job Fluid Details

Fluid	Type	Fluid	Product	Function	Conc.	Uom
2	Lead	Lead	ASTM TYPE IL	Cement	100.00	%
2	Lead	Lead	A-10	Accelerator	5.00	%BWOB
2	Lead	Lead	A-2	Accelerator	3.00	lb/sk
2	Lead	Lead	A-7P	Accelerator	2.00	lb/sk
2	Lead	Lead	IntegraSeal POLI	LostCirculation	0.25	lb/sk
2	Lead	Lead	STATIC FREE	Other	0.01	lb/sk
2	Lead	Lead	XCem-311	Defoamer	0.30	%BWOB
3	Tail	Tail	ASTM TYPE IL	Cement	100.00	%
3	Tail	Tail	A-10	Accelerator	5.00	%BWOB
3	Tail	Tail	A-2	Accelerator	2.00	lb/sk
3	Tail	Tail	A-7P	Accelerator	2.00	lb/sk
3	Tail	Tail	IntegraSeal POLI	LostCirculation	0.25	lb/sk
3	Tail	Tail	STATIC FREE	Other	0.01	lb/sk
3	Tail	Tail	XCem-311	Defoamer	0.30	%BWOB

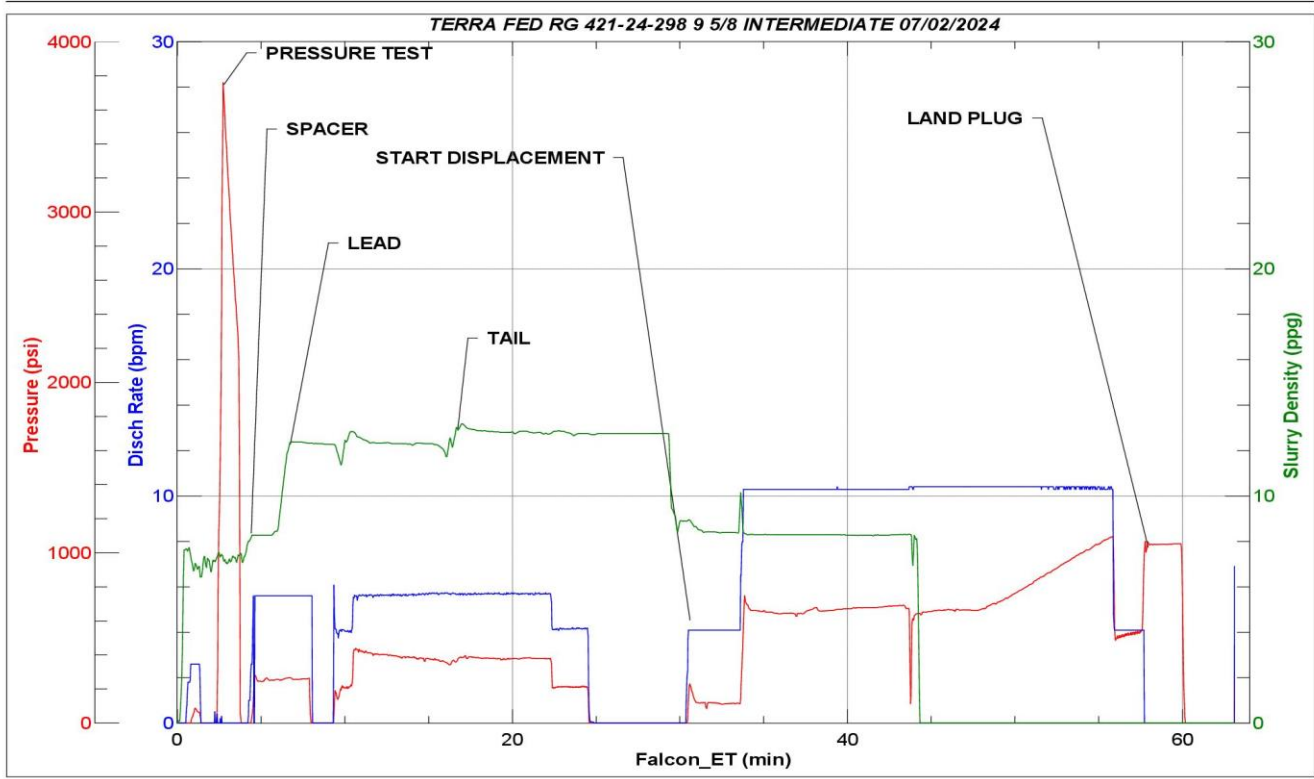
Job Logs

Line	Event	Date (MM/DD/YY)	Time (HH:MM)	Density (lb/gal)	Pump Rate (bpm)	Pump Volume (bbls)	Pipe Pressure (psi)	Comment
1	ARRIVE ON LOCATION	7/2/2024	08:00					ARRIVE ON LOCATION PER CUSTOMER REQUEST 08:00
2	HAZARD ASSESEMENT	7/2/2024	08:05					
3	SPOT EQUIPMENT	7/2/2024	08:10					
4	RIG UP SAFETY MEETING	7/2/2024	08:20					
5	RIG UP IRON	7/2/2024	08:30					
6	PRE JOB SAFETY MEETING	7/2/2024	12:00					
7	STAB HEAD	7/2/2024	12:10					
8	START JOB	7/2/2024	12:17					START JOB
9	PRESSURE TEST	7/2/2024	12:19	8.34	1	1	3000	PRESSURE TEST LINES TO 3000PSI
10	20 BBL FRESH WATER SPACER	7/2/2024	12:21	8.34	5	20	280	20 BBL FRESH WATER SPACER
11	START 41.9 BBL LEAD @12.3	7/2/2024	12:26	12.3	5	1	417	START 41.9 BBL LEAD @ 12.3(2.31, 13.17) 102SKS
12	END OF LEAD	7/2/2024	12:33	12.3	5	41.9	347	END OF LEAD
13	START 45.3 BBL OFLTAIL	7/2/2024	12:33	12.8	5	1	386	START 45.3 BBL TAIL (2.03,11.16) 125SKS
14	END OF TAIL	7/2/2024	12:40	12.8	5	45.3	211	END OF TAIL
15	SHUTDOWN DROP TOP PLUG	7/2/2024	12:40					
16	START 247.5 BBL FRESH WATER DISPLACEMENT	7/2/2024	12:47	8.34	4	1	211	START 247.5 BBL FRESH WATER DISPLACEMENT
17	50 BBL GONE	7/2/2024	12:54	8.34	10	50	660	
18	100 BBL GONE	7/2/2024	12:59	8.34	10	100	686	
19	150 BBL GONE	7/2/2024	13:04	8.34	10	150	664	CAUGHT CEMENT @ 168 GONE
20	200 BBL GONE	7/2/2024	13:09	8.34	10	200	896	
21	PRESSURE BEFORE SLOW	7/2/2024	13:11	8.34	10	237	1125	PRESSURE BEFORE SLOWING RATE
22	SLOW RATE PRESSURE	7/2/2024	13:11	8.34	4	237	538	SLOW RATE PRESSURE @ 4 BPM
23	PRESSURE BEFORE LANDING PLUG	7/2/2024	13:15	8.34	4	247	560	FINAL LIFT PRESSURE TO LAND PLUG
24	LAND PLUG	7/2/2024	13:15	8.34	4	247.5	1077	LAND PLUG
25	CHECK FLOATS	7/2/2024	13:17					RETURNED 1 BBL UPON FLOAT CHECK
26	END OF CEMENTING SERVICES	7/2/2024	13:17					END OF CEMENTING SERVICES
27	POST JOB SAFETY MEETING	7/2/2024	13:20					
28	RIG DOWN IRON	7/2/2024	14:00					
29	PRE CONVOY SAFETY MEETING	7/2/2024	14:25					
30	DEPART LOCATION	7/2/2024	14:30					
31	END OF JOB	7/2/2024	14:30					END OF JOB

Pump Diagrams



JobMaster Program Version 5.01C1
Job Number: 91965
Customer: TERRA
Well Name: FEDERAL RG 421-24 298



Job Start: Tuesday, July 02, 2024