



**RADIAL BOND TOOL
GAMMA RAY
CCL**

Company CHEVRON
Well BUTTERBALL D19-19D
Field WATTENBERG
County WELD
State CO
Country USA

Company CHEVRON
Well BUTTERBALL D19-19D
Field WATTENBERG
County WELD
State CO
Country USA

Location: API #: 05-123-35585
NENW
LAT. 40.215090 LONG. -104.597180
SEC 19 TWP 3N RGE 64W
Permanent Datum GL Elevation 4790'
Log Measured From KB 13'
Drilling Measured From KB
Other Services
K.B. 4803'
D.F. 4802'
G.L. 4790'

Date 9-15-2022
Run Number ONE
Depth Driller 7715'
Depth Logger 1492'
Bottom Logged Interval 1488'
Top Log Interval SURFACE
Open Hole Size 8.625"
Type Fluid WATER
Density / Viscosity NA
Max. Recorded Temp. 102.3 °F
Estimated Cement Top 821'
Time Well Ready ON ARRIVAL
Time Logger on Bottom NA
Equipment Number 3813
Location GREELEY, CO
Recorded By J. KERR
Witnessed By C. JONES

Borehole Record				Tubing Record			
Run Number	Bit	From	To	Size	Weight	From	To


Casing Record	Size	Wgt/Ft	Top	Bottom
Surface String	8.625"	24#	SURFACE	600'
Prot. String				
Production String	4.5"	11.6#	SURFACE	7715'
Liner				

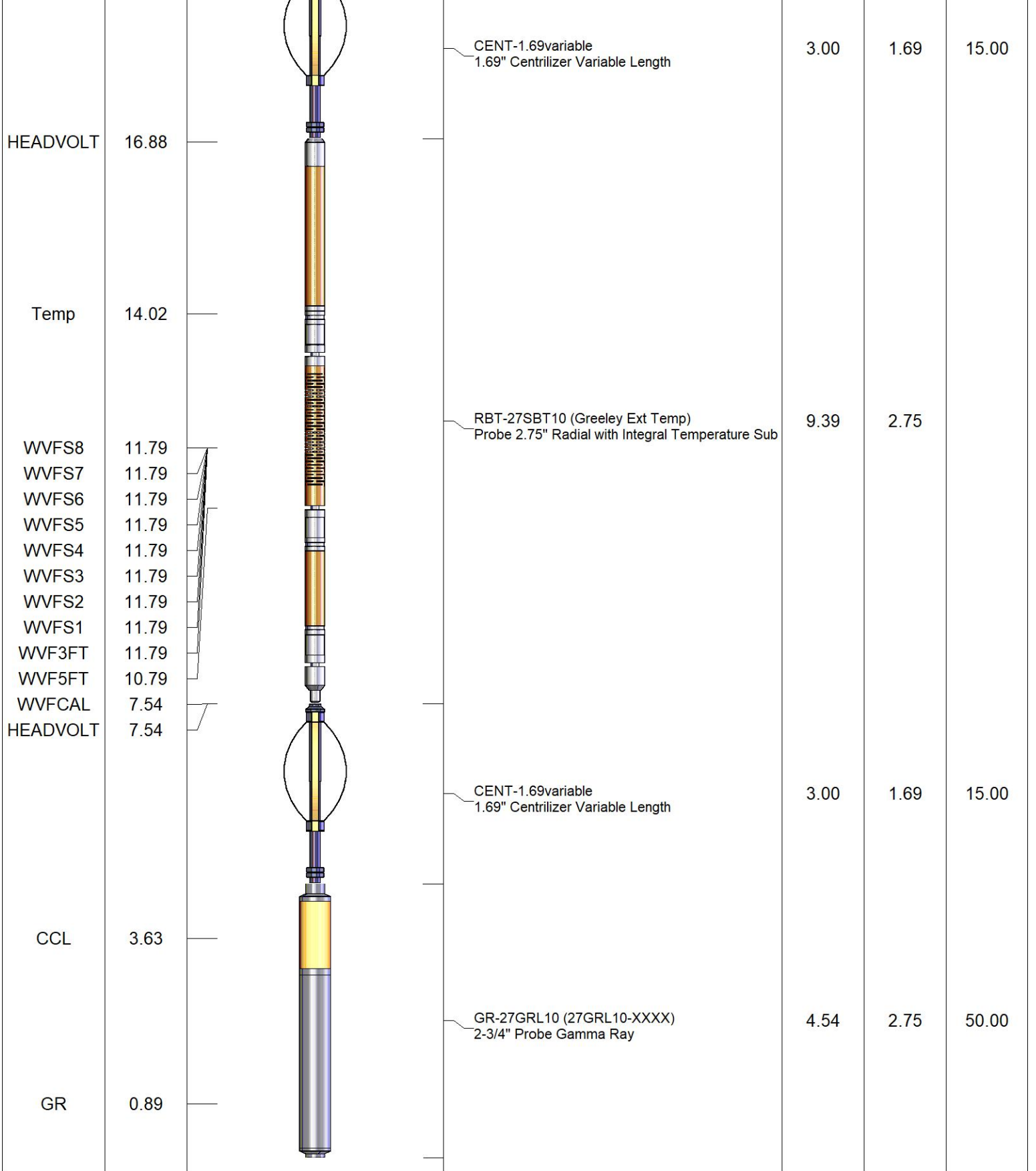
<<< Fold Here >>>

All interpretations are opinions based on inferences from electrical or other measurements and we cannot and do not guarantee the accuracy or correctness of any interpretation, and we shall not, except in the case of gross or willful negligence on our part, be liable or responsible for any loss, costs, damages, or expenses incurred or sustained by anyone resulting from any interpretation made by any of our officers, agents or employees. These interpretations are also subject to our general terms and conditions set out in our current Price Schedule.

Comments

**RAN CBL TO VERIFY CEMENT BOND
WELL LOADED UPON ARRIVAL
CALIBRATED IN SURFACE CASING
CORRELATED TO AXIS CBL RAN 9-9-2022**

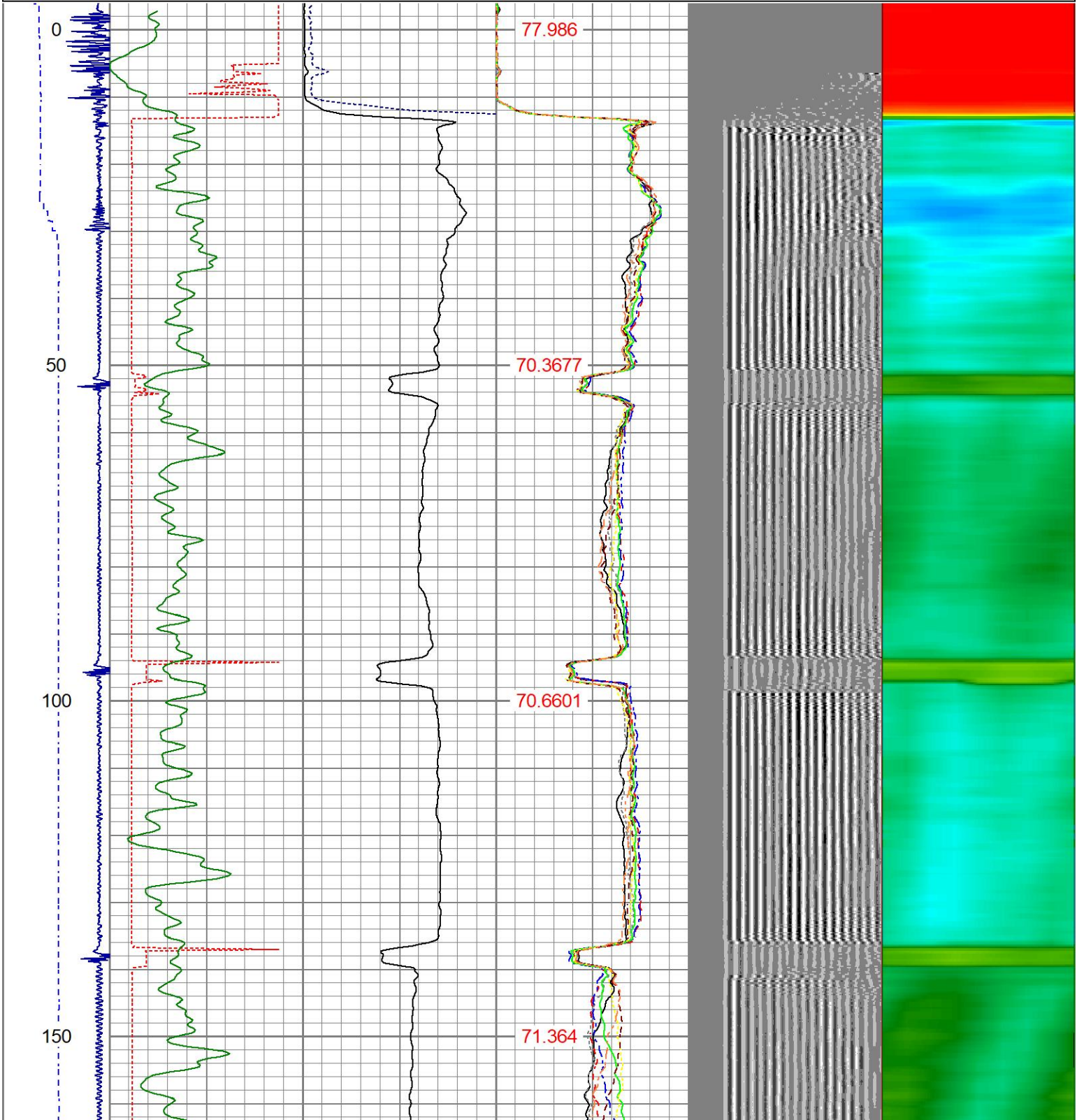
Sensor	Offset (ft)	Schematic	Description	Length (ft)	O.D. (in)	Weight (lb)
			CHD-1_11/16_Cablehead 1 11/16 Cablehead	1.00	1.68	5.00

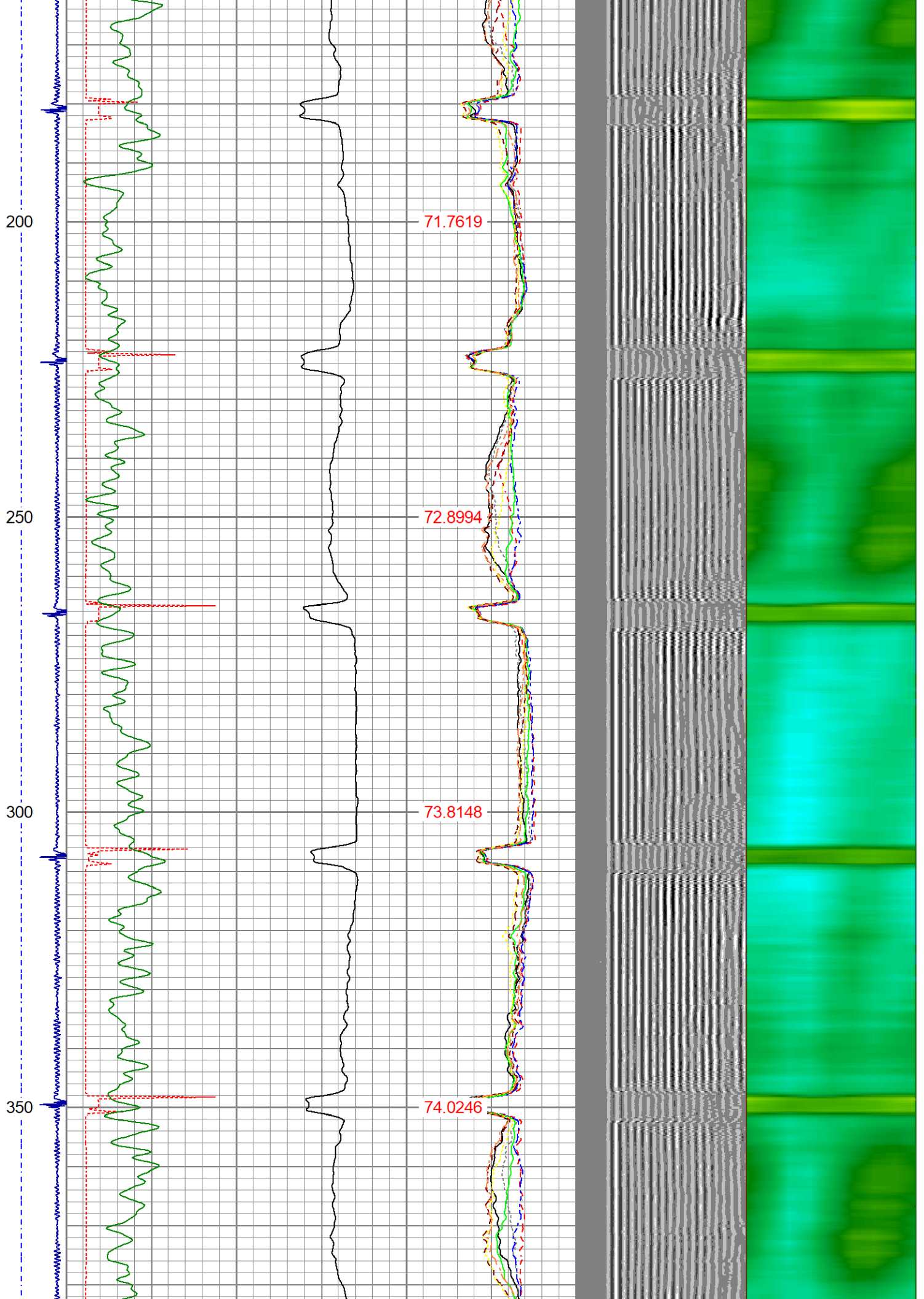


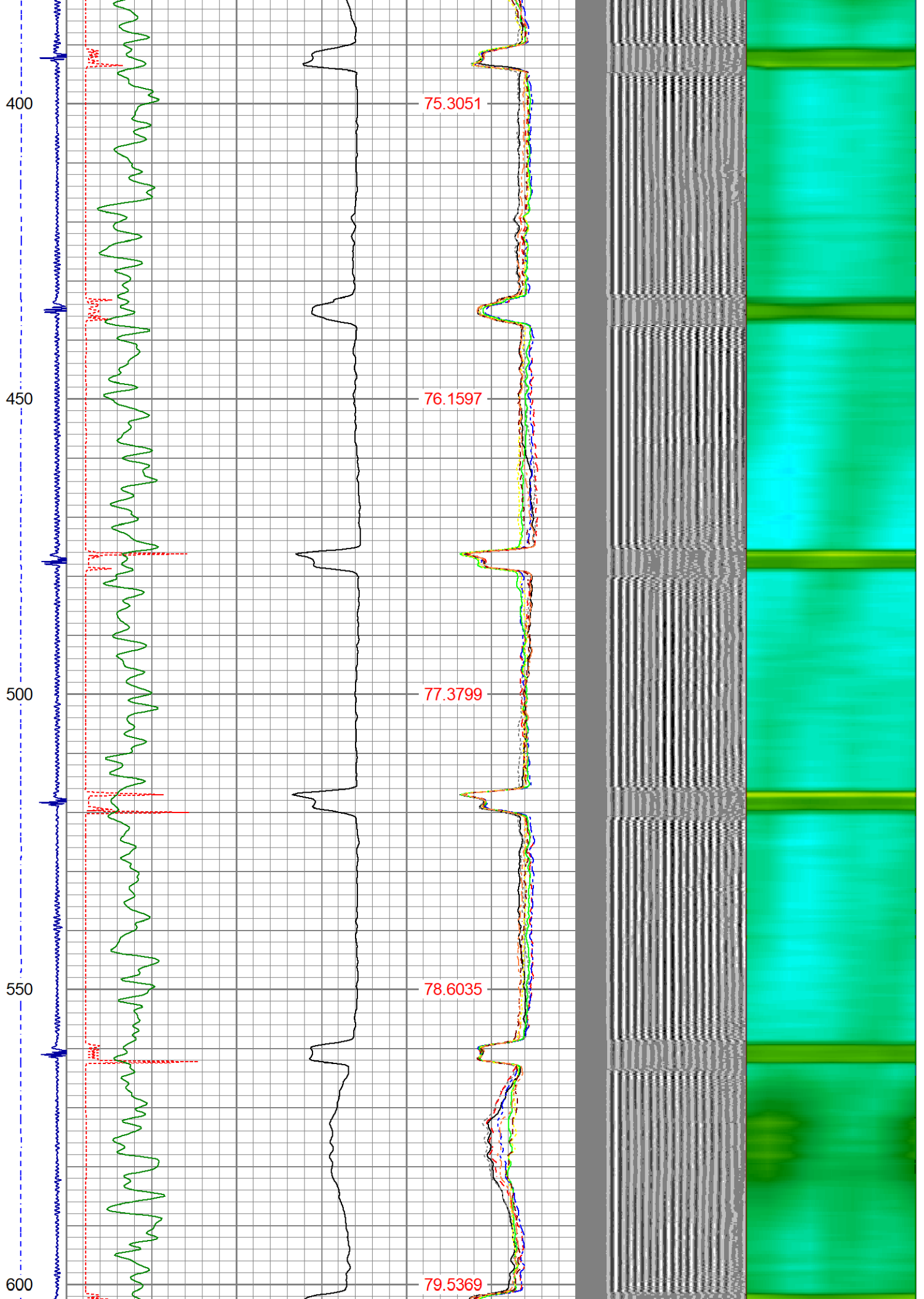
Dataset: butterball d 19-19 d.db: field/well/run1/pass6
 Total length: 20.93 ft
 Total weight: 85.00 lb
 O.D.: 2.75 in

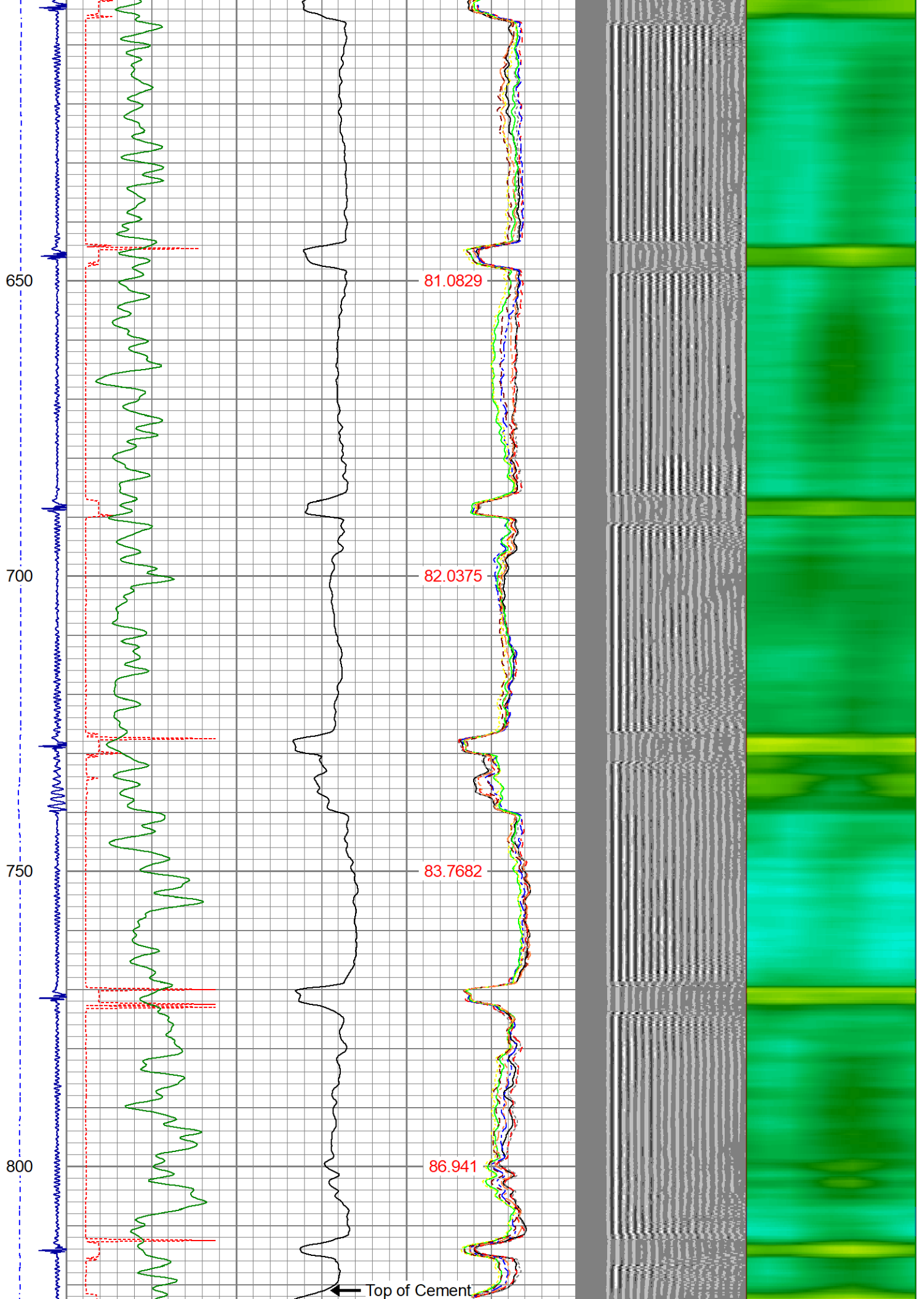
Database File butterball d 19-19 d.db
 Dataset Pathname pass6
 Presentation Format ips_rbtcolor
 Dataset Creation Thu Sep 15 11:49:03 2022
 Charted by Depth in Foot scaled 1:240

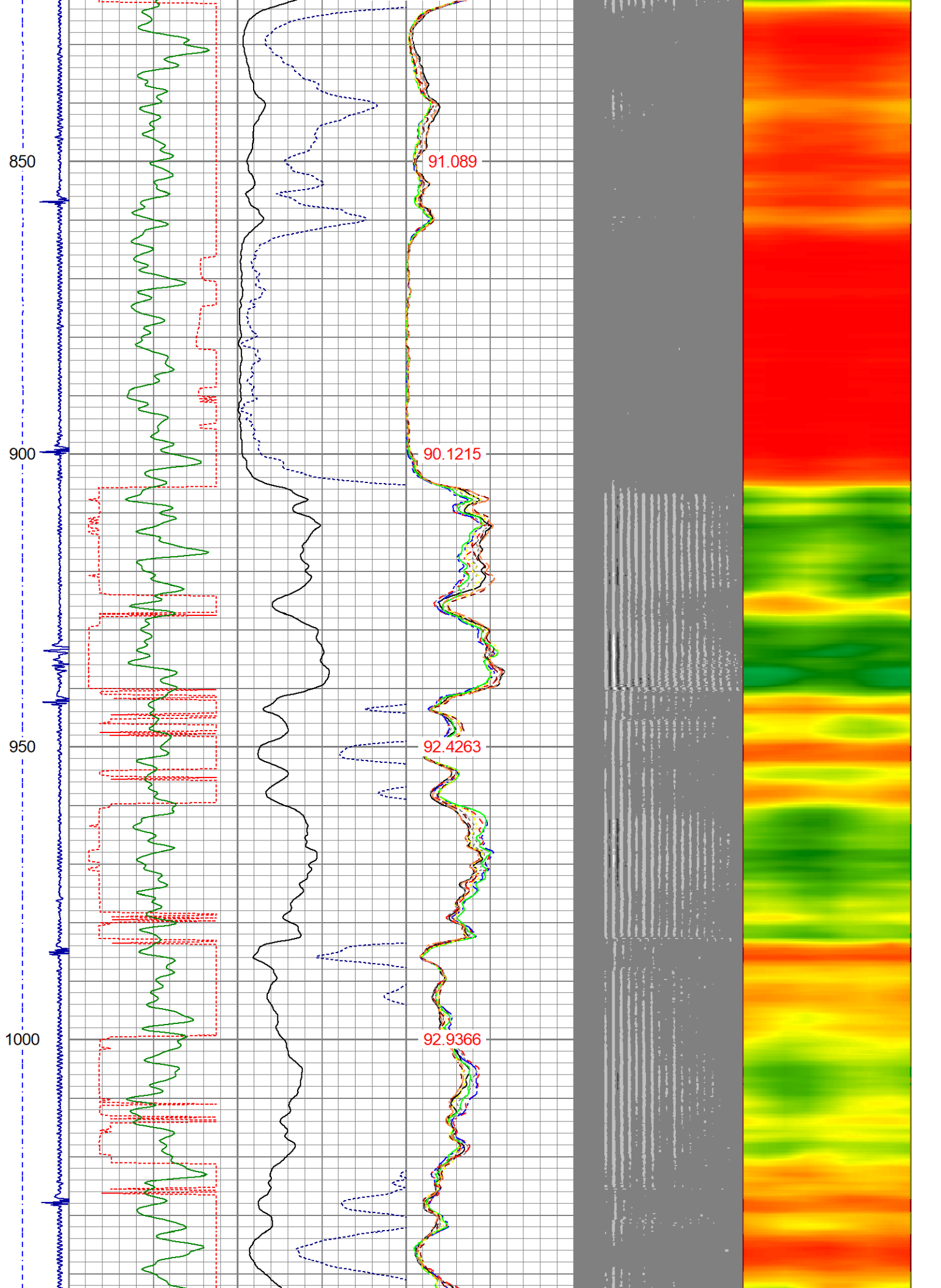
-9	CCL	1	200	TT (usec)	1000	0	AMP (mV)	100	0	AMPS1	100	200	VDL (usec)	1200	1	Cement Map	8
	LSPD		0	GR (GAPI)	200	0	AMPx5 (mV)	20	0	AMPS2	100						
	(ft/min)		200	GR (GAPI)	400				0	AMPS3	100						
0		250							0	AMPS4	100						
									0	AMPS5	100						
									0	AMPS6	100						
									0	AMPS7	100						
									0	AMPS8	100						
										TEMP							
										(degF)							

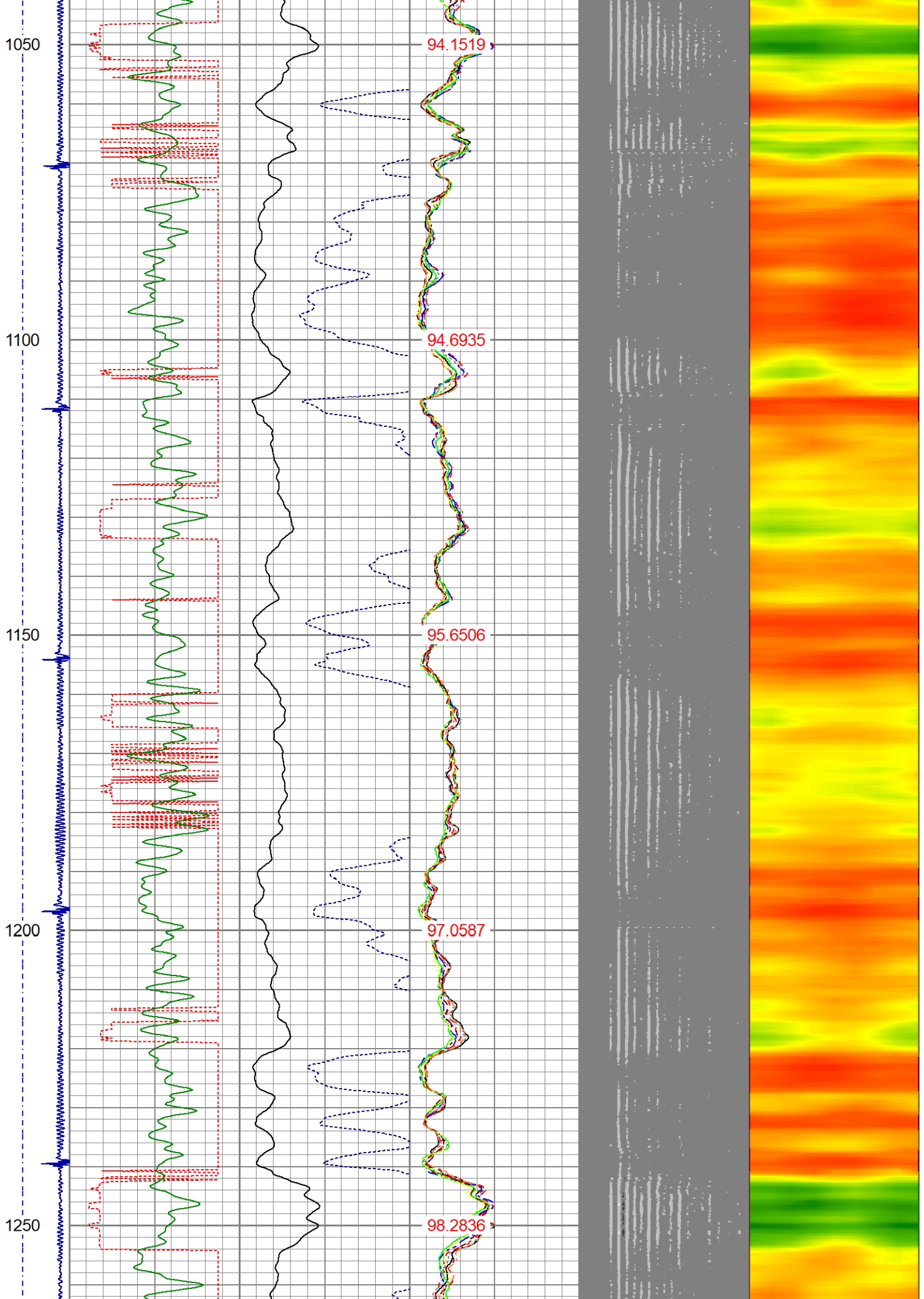


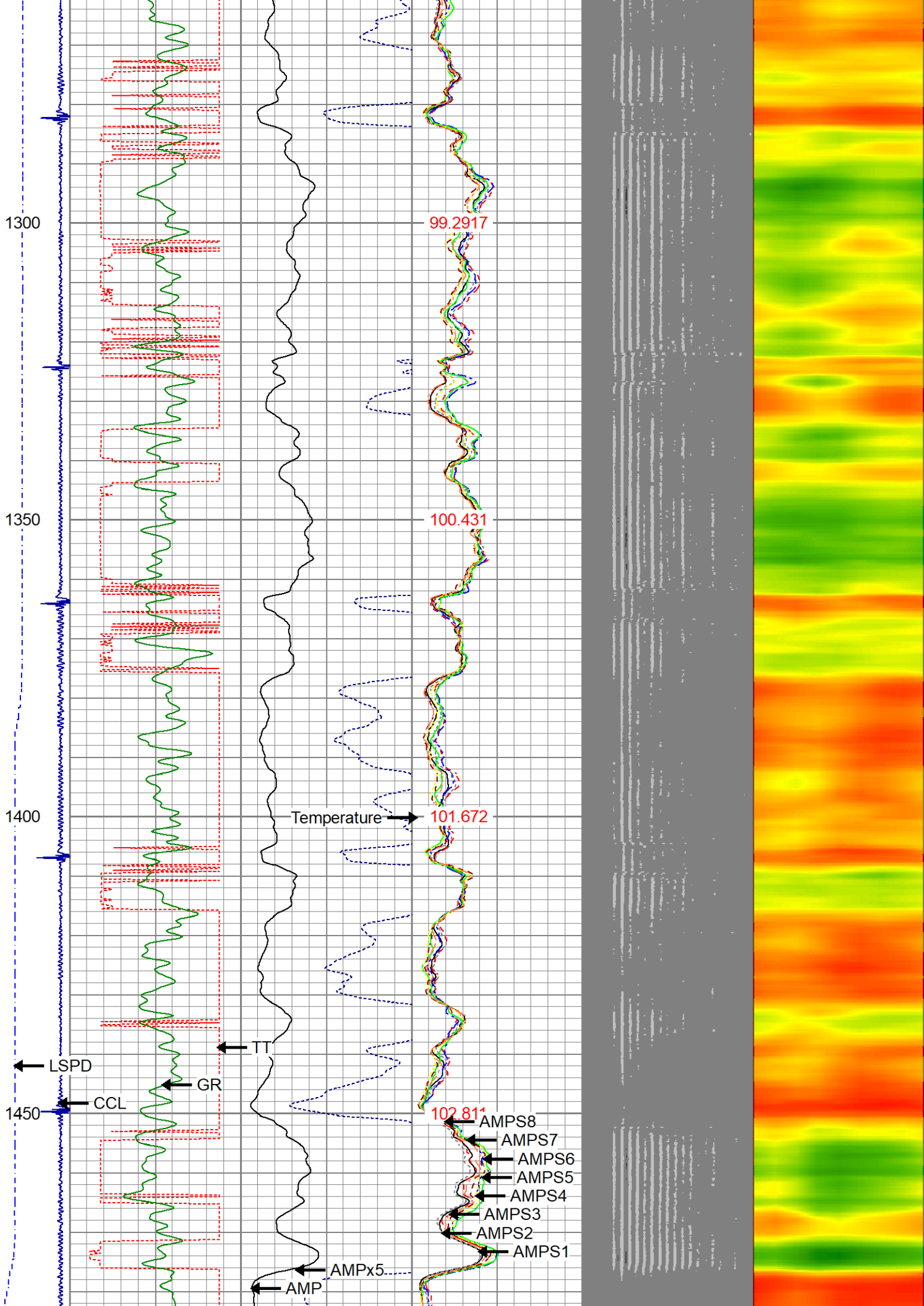


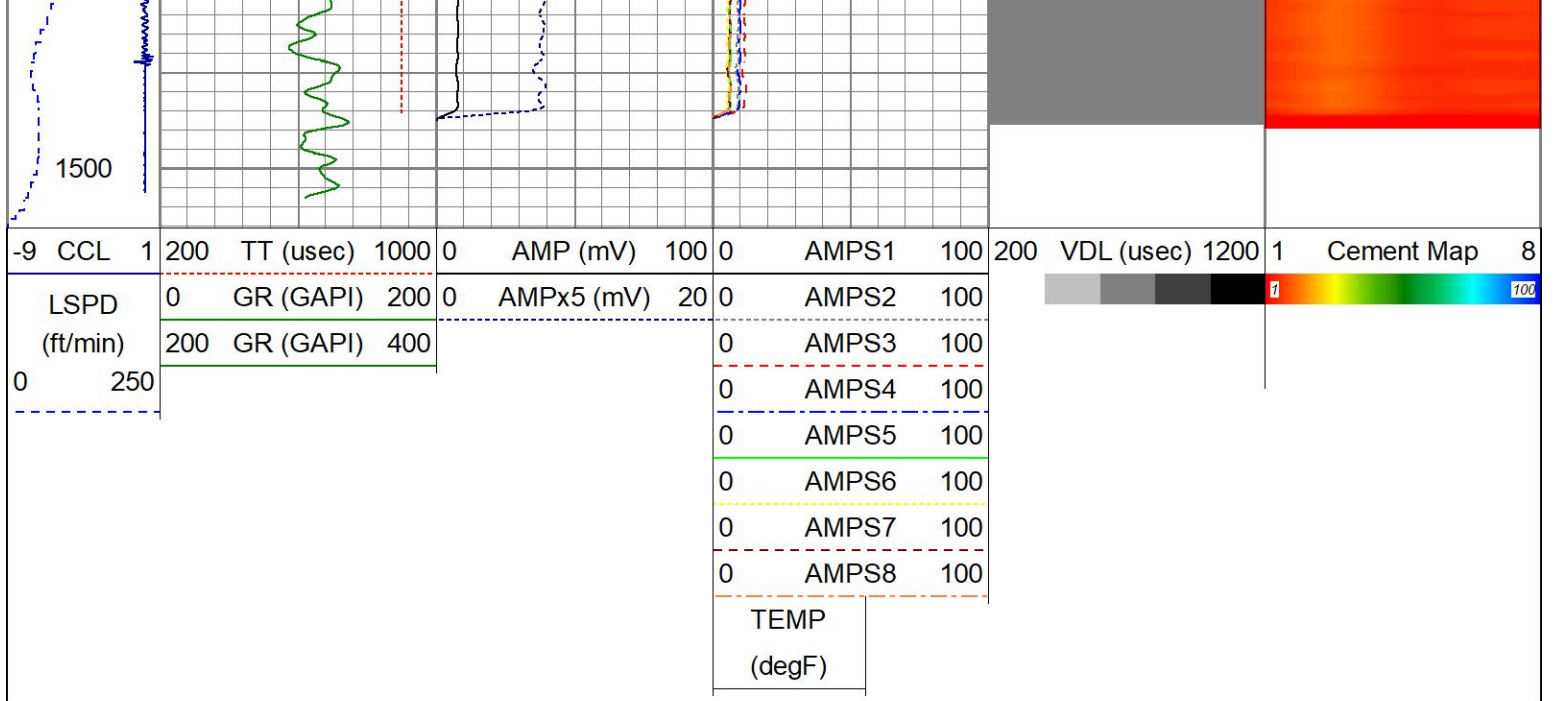












Calibration Report

Database File butterball d 19-19 d.db
 Dataset Pathname pass6
 Dataset Creation Thu Sep 15 11:49:03 2022

Gamma Ray Calibration Report

Serial Number: 27GRL10-XXXX
 Tool Model: 27GRL10
 Performed: (Not Performed)

Calibrator Value: 1.0 GAPI

Background Reading: 0.0 cps
 Calibrator Reading: 1.0 cps

Sensitivity: 1.0000 GAPI/cps

Segmented Cement Bond Log Calibration Report

Serial Number: Greeley Ext Temp
 Tool Model: 27SBT10

Calibration Casing Diameter: 4.500 in
 Calibration Depth: 39.912 ft

Master Calibration, performed Thu Sep 15 11:39:24 2022:

	Raw (v)		Calibrated (mv)		Results	
	Zero	Cal	Zero	Cal	Gain	Offset
3'	0.013	0.954	0.250	81.196	85.990	-0.864
CAL	0.015	1.478				
5'	0.020	0.880	0.250	81.196	94.094	-1.595
SUM						
S1	0.017	0.956	0.000	81.196	86.418	-1.439
S2	0.015	0.915	0.000	81.196	90.215	-1.336
S3	0.021	0.883	0.000	81.196	94.167	-1.987
S4	0.022	0.898	0.000	81.196	92.710	-2.071
S5	0.021	0.924	0.000	81.196	89.895	-1.891
S6	0.020	0.962	0.000	81.196	86.196	-1.692
S7	0.016	0.971	0.000	81.196	85.070	-1.386

S7	0.018	0.971	0.000	81.196	85.070	-1.580
S8	0.019	0.961	0.000	81.196	86.205	-1.627

Internal Reference Calibration, performed Wed Sep 7 12:57:05 2022:

	Raw (v)		Calibrated (v)		Results	
	Zero	Cal	Zero	Cal	Gain	Offset
CAL	0.000	0.000	0.015	1.478	1.000	0.000

Air Zero Calibration, performed Thu Sep 15 11:29:17 2022:

	Raw (v)		Calibrated (v)		Results	
	Zero		Zero		Offset	
3'	0.000		0.000		0.000	
5'	0.000		0.000		0.000	
SUM						
S1	0.000		0.000		0.000	
S2	0.000		0.000		0.000	
S3	0.000		0.000		0.000	
S4	0.000		0.000		0.000	
S5	0.000		0.000		0.000	
S6	0.000		0.000		0.000	
S7	0.000		0.000		0.000	
S8	0.000		0.000		0.000	



Company	CHEVRON	
Well	BUTTERBALL D19-19D	
Field	WATTENBERG	
County	WELD	
State	CO	Country USA