



**RADIAL BOND TOOL  
GAMMA RAY  
CCL**

Company CHEVRON  
Well BUTTERBALL D19-19D  
Field WATTENBERG  
County WELD  
State CO  
Country USA

Company CHEVRON  
Well BUTTERBALL D19-19D  
Field WATTENBERG  
County WELD  
State CO  
Country USA

Location: API #: NENW  
LAT 40.215090 LONG -104.597180  
SEC 3N TWP 64W RGE 6  
Permanent Datum GL Elevation 4790'  
Log Measured From KB 13'  
Drilling Measured From GL  
Other Services  
Elevation  
K.B. 4803'  
D.F. 4802'  
G.L. 4790'

Date 9/9/2022  
Run Number ONE  
Depth Driller 7746'  
Depth Logger 2500'  
Bottom Logged Interval 2504'  
Top Log Interval SURFACE  
Open Hole Size 8.625'  
Type Fluid WATER  
Density / Viscosity N/A  
Max. Recorded Temp. 117.83°  
Estimated Cement Top N/A  
Time Well Ready ON ARRIVAL  
Time Logger on Bottom N/A  
Equipment Number 7770  
Location GREELEY, CO  
Recorded By CODY JENSEN  
Witnessed By Cody Jones

Borehole Record				Tubing Record			
Run Number	Bit	From	To	Size	Weight	From	To

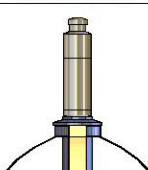
Casing Record	Size	Mgt/Ft	Top	Bottom
Surface String	8.625"	24#	SURFACE	741'
Prot. String				
Production String	4.5"	11.6#	SURFACE	7736'
Liner				

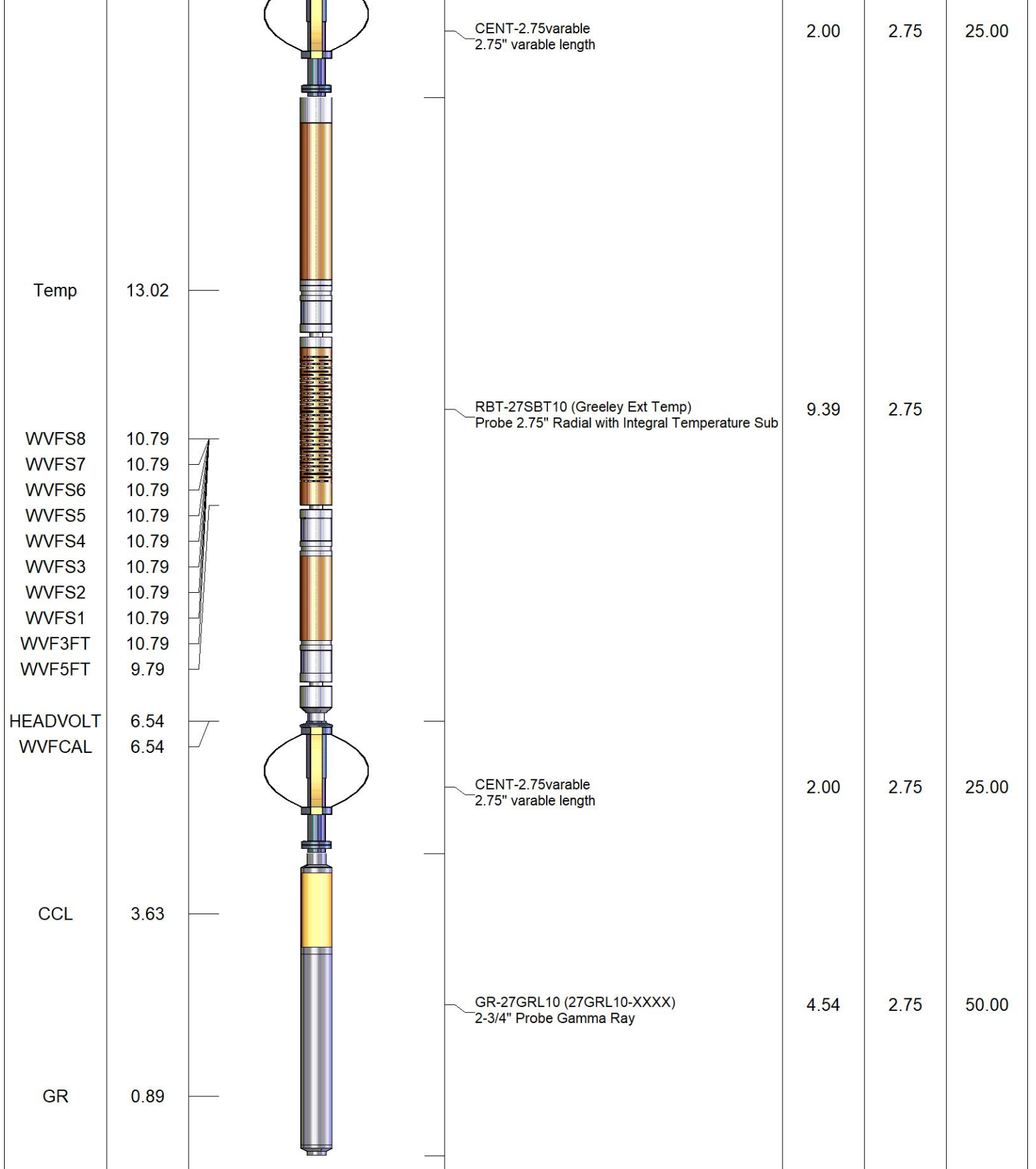
<<< Fold Here >>>

All interpretations are opinions based on inferences from electrical or other measurements and we cannot and do not guarantee the accuracy or correctness of any interpretation, and we shall not, except in the case of gross or willful negligence on our part, be liable or responsible for any loss, costs, damages, or expenses incurred or sustained by anyone resulting from any interpretation made by any of our officers, agents or employees. These interpretations are also subject to our general terms and conditions set out in our current Price Schedule.

**Comments**

**RAN CBL TO VERIFY CEMENT BOND  
WELL LOADED UPON ARRIVAL**

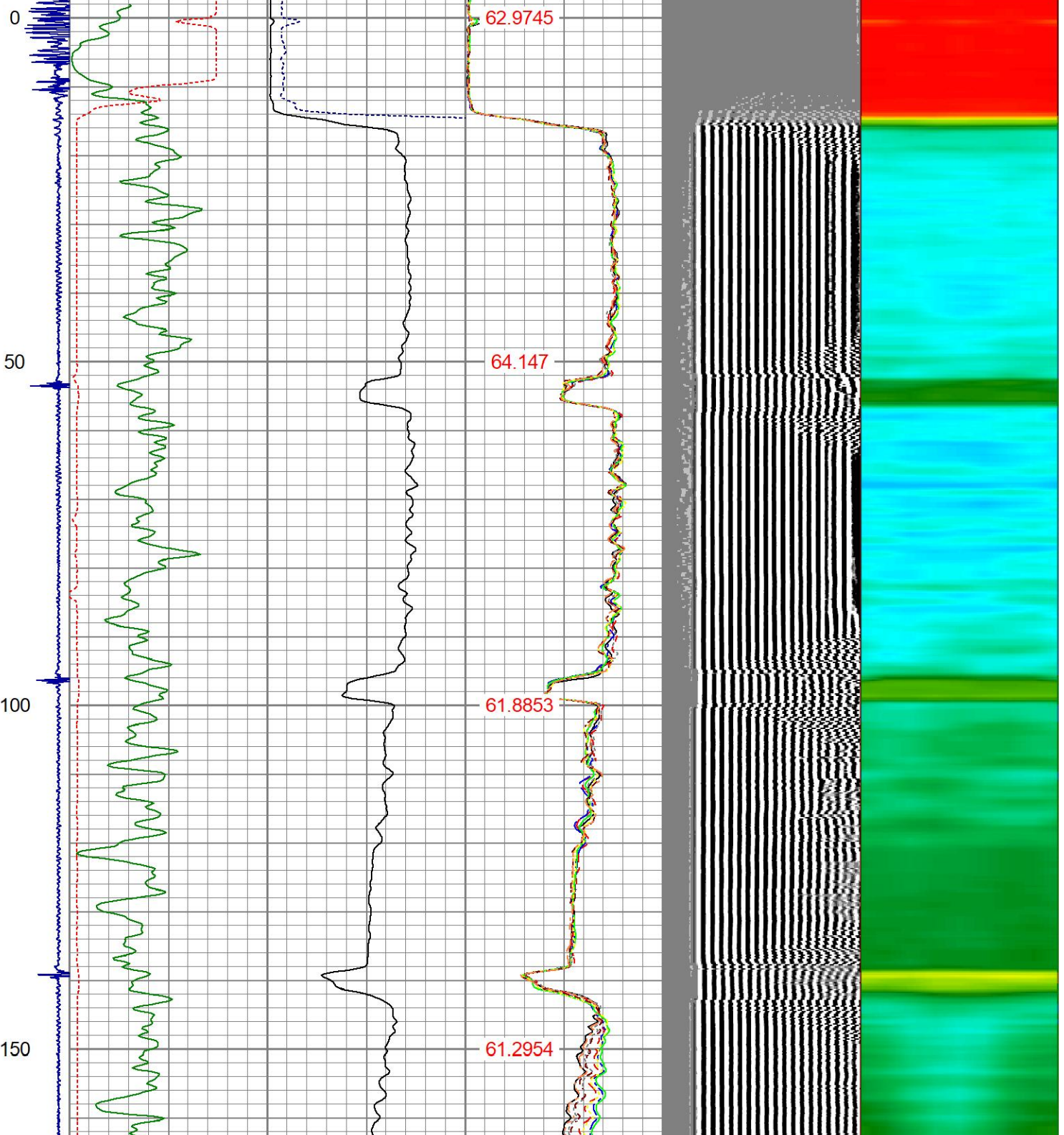
Sensor	Offset (ft)	Schematic	Description	Length (ft)	O.D. (in)	Weight (lb)
			CHD-1_7/16_Cabehead 1 7/16 Cablehead	1.00	1.44	5.00

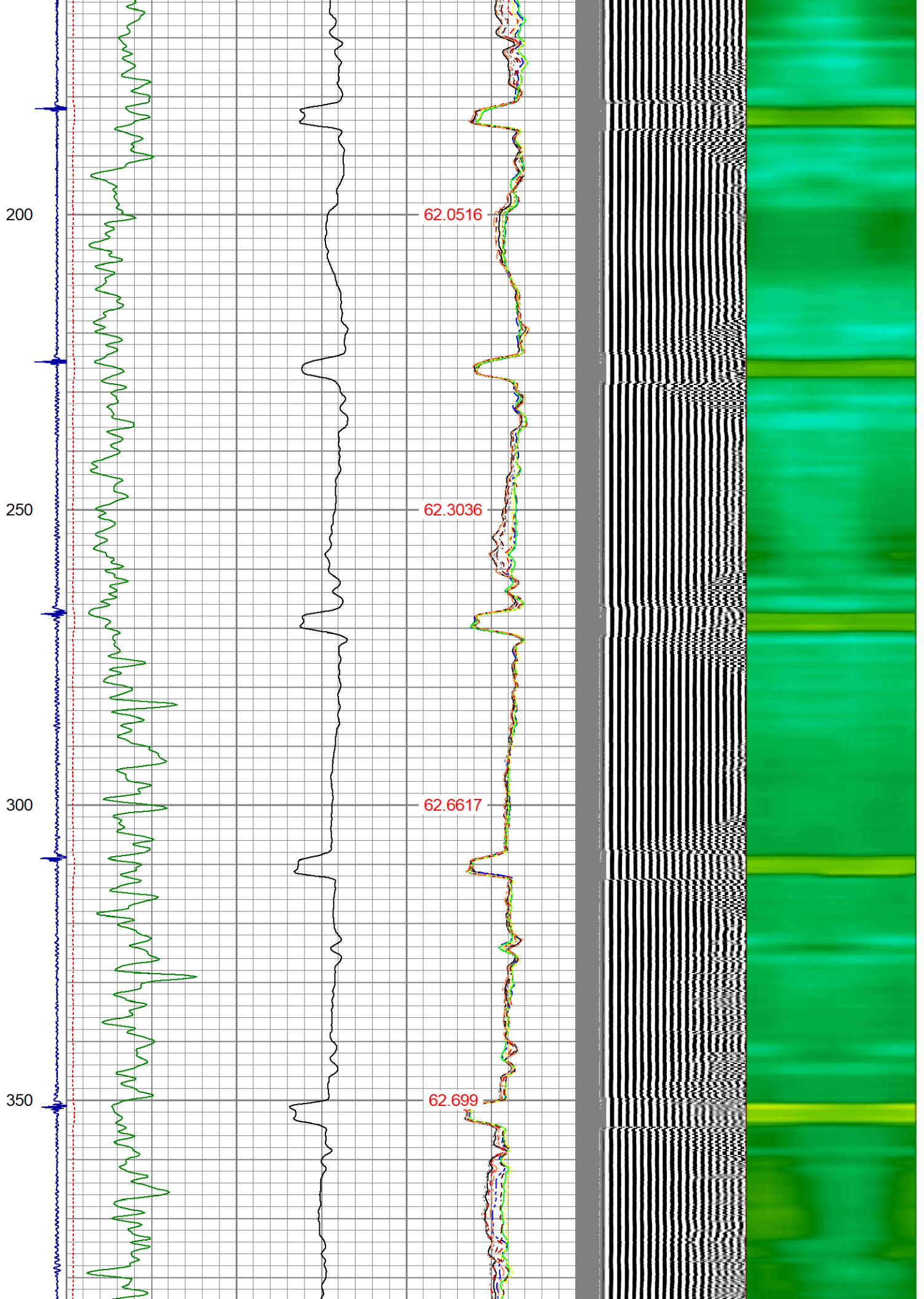


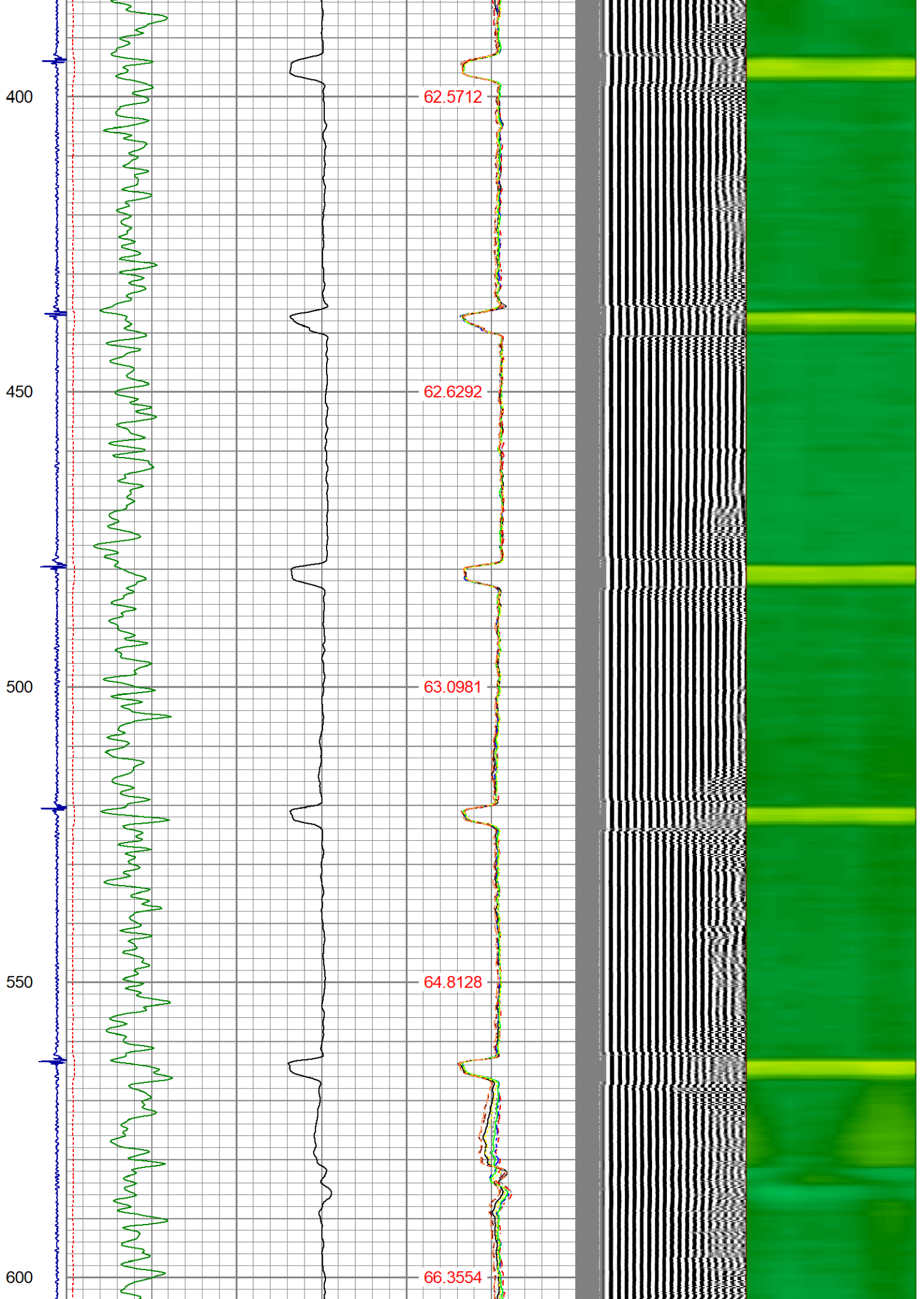
Dataset: butterball d19-19d.db: field/well/run1/pass21  
 Total length: 18.93 ft  
 Total weight: 105.00 lb  
 O.D.: 2.75 in

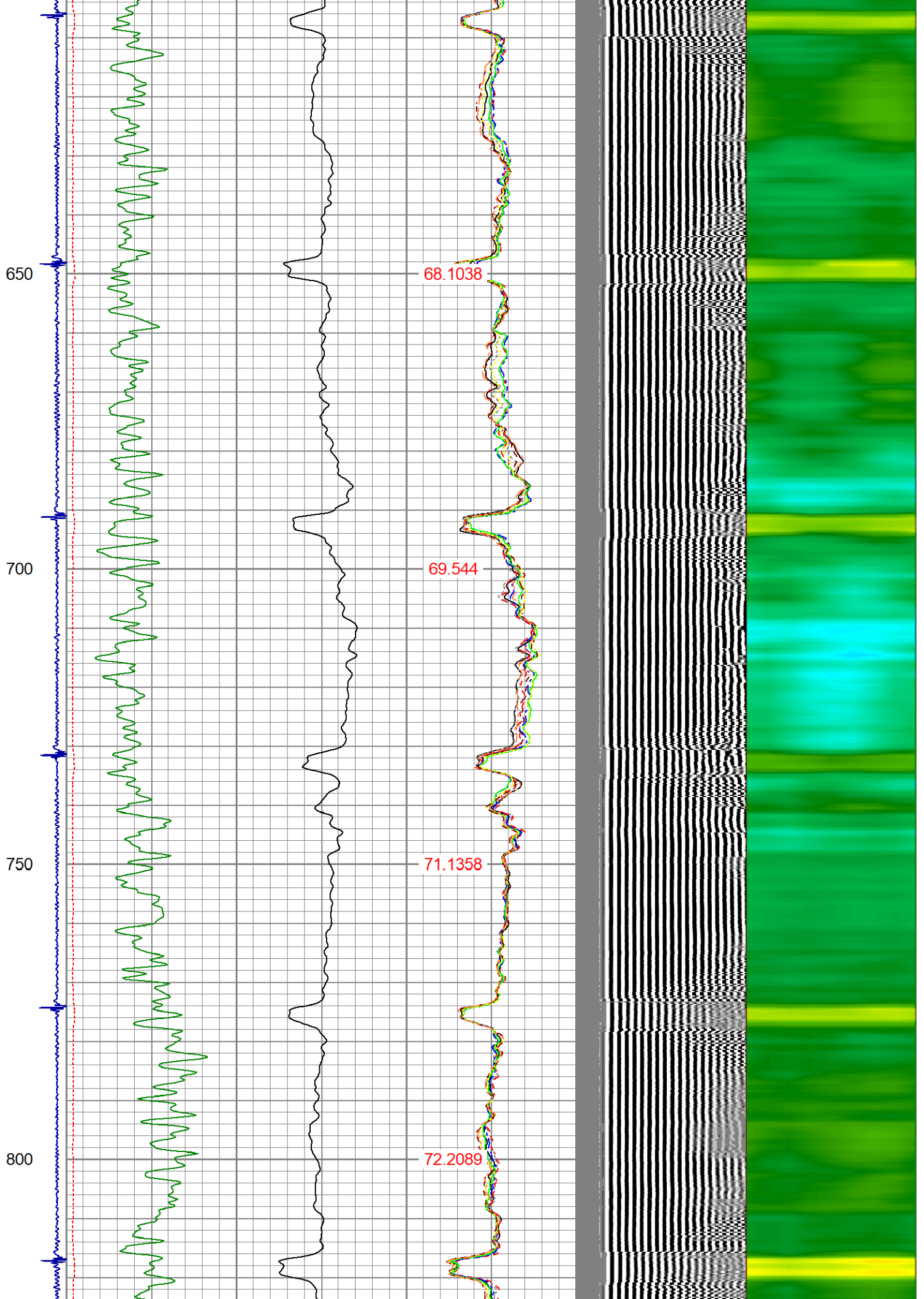
Database File butterball d19-19d.db  
 Dataset Pathname pass21  
 Presentation Format ips\_rbtcolor  
 Dataset Creation Fri Sep 09 15:07:37 2022  
 Charted by Depth in Feet scaled 1:240

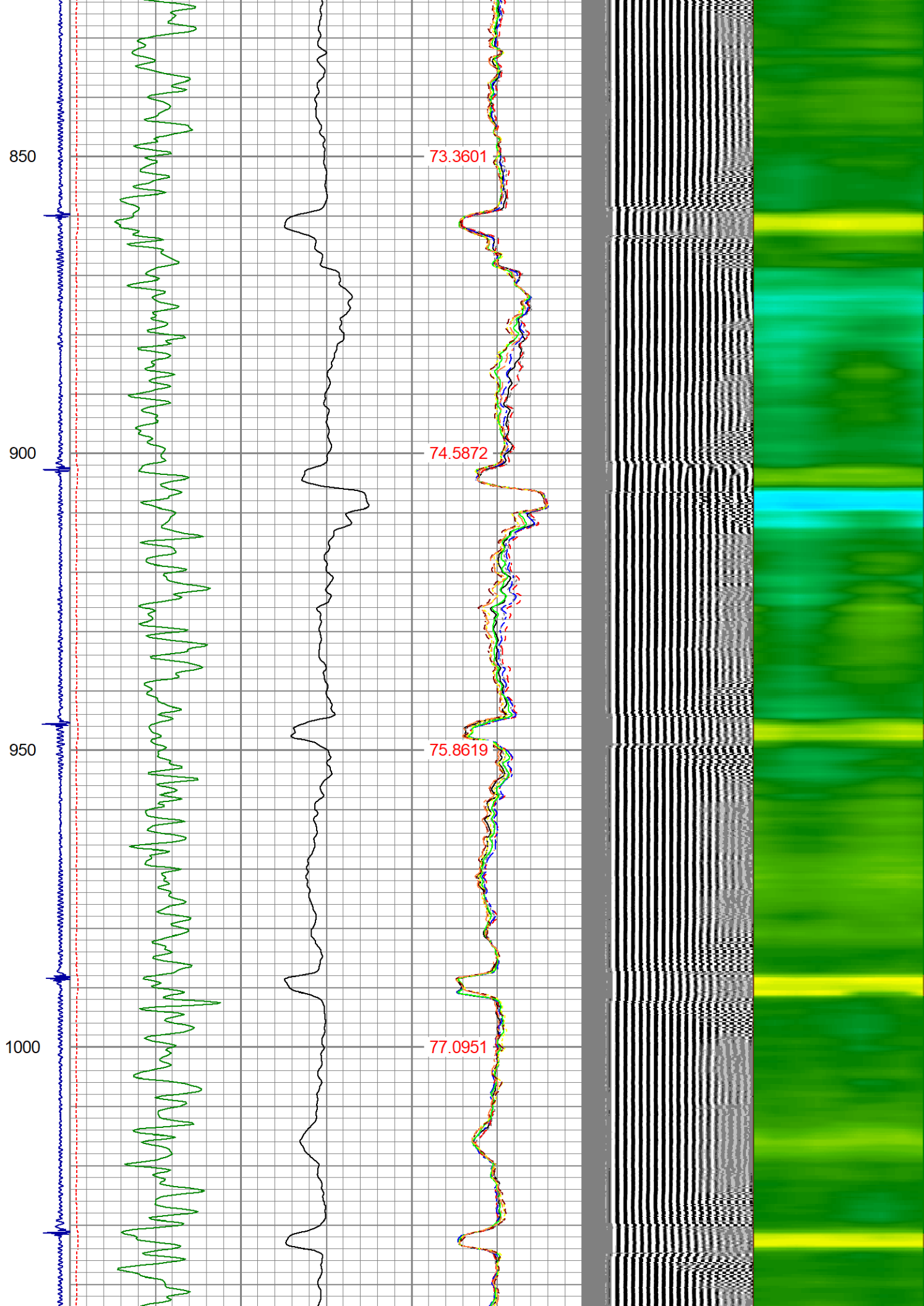
-9	CCL	1	200	TT (usec)	1000	0	AMP (mV)	100	0	AMPS1	100	200	VDL (usec)	1200	1	Cement Map	8	
	LSPD		0	GR (GAPI)	200	0	AMPx5 (mV)	20	0	AMPS2	100							
	(ft/min)		200	GR (GAPI)	400					AMPS3	100							
0		250								AMPS4	100							
										AMPS5	100							
										AMPS6	100							
										AMPS7	100							
										AMPS8	100							
										TEMP								
										(degF)								

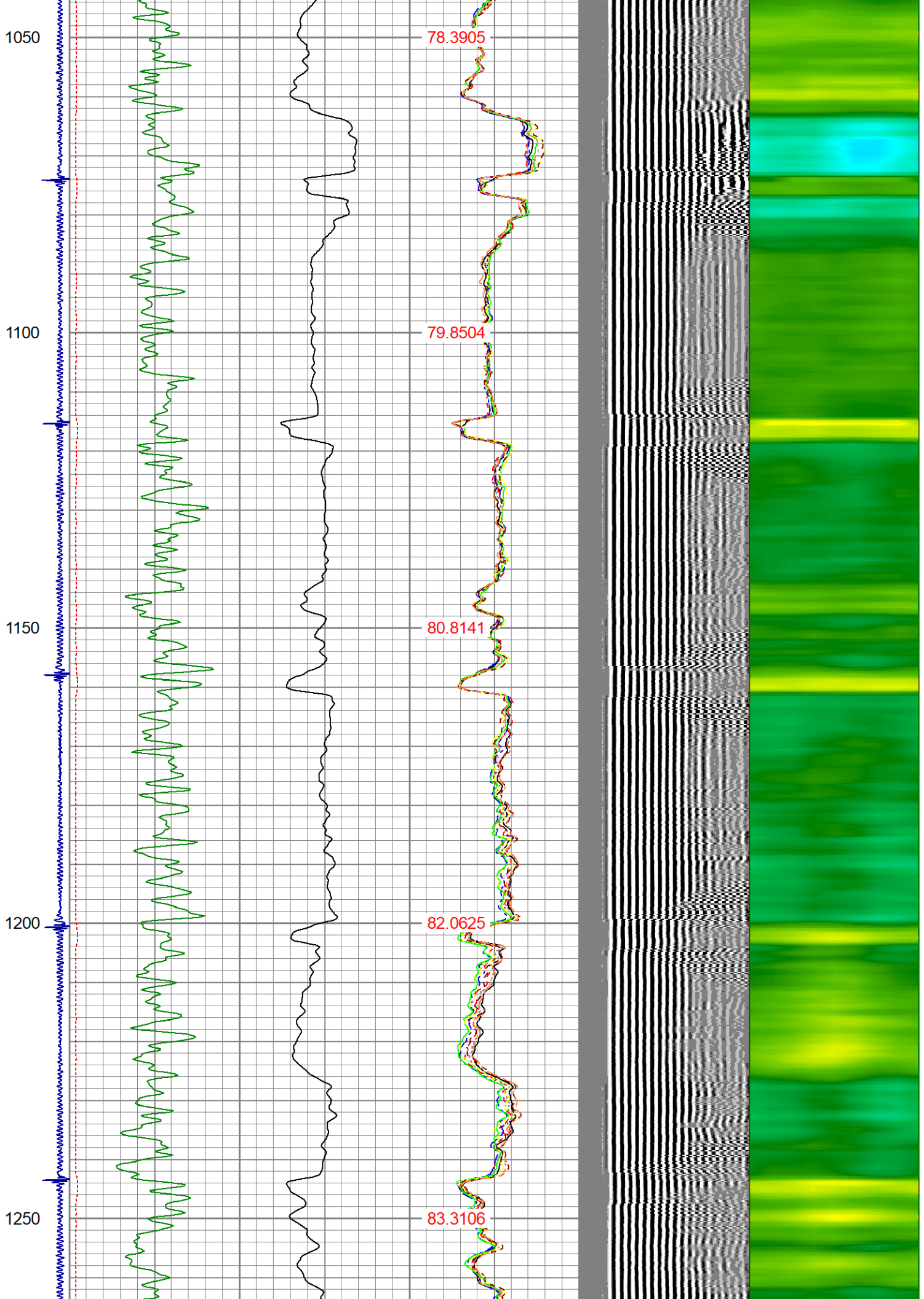


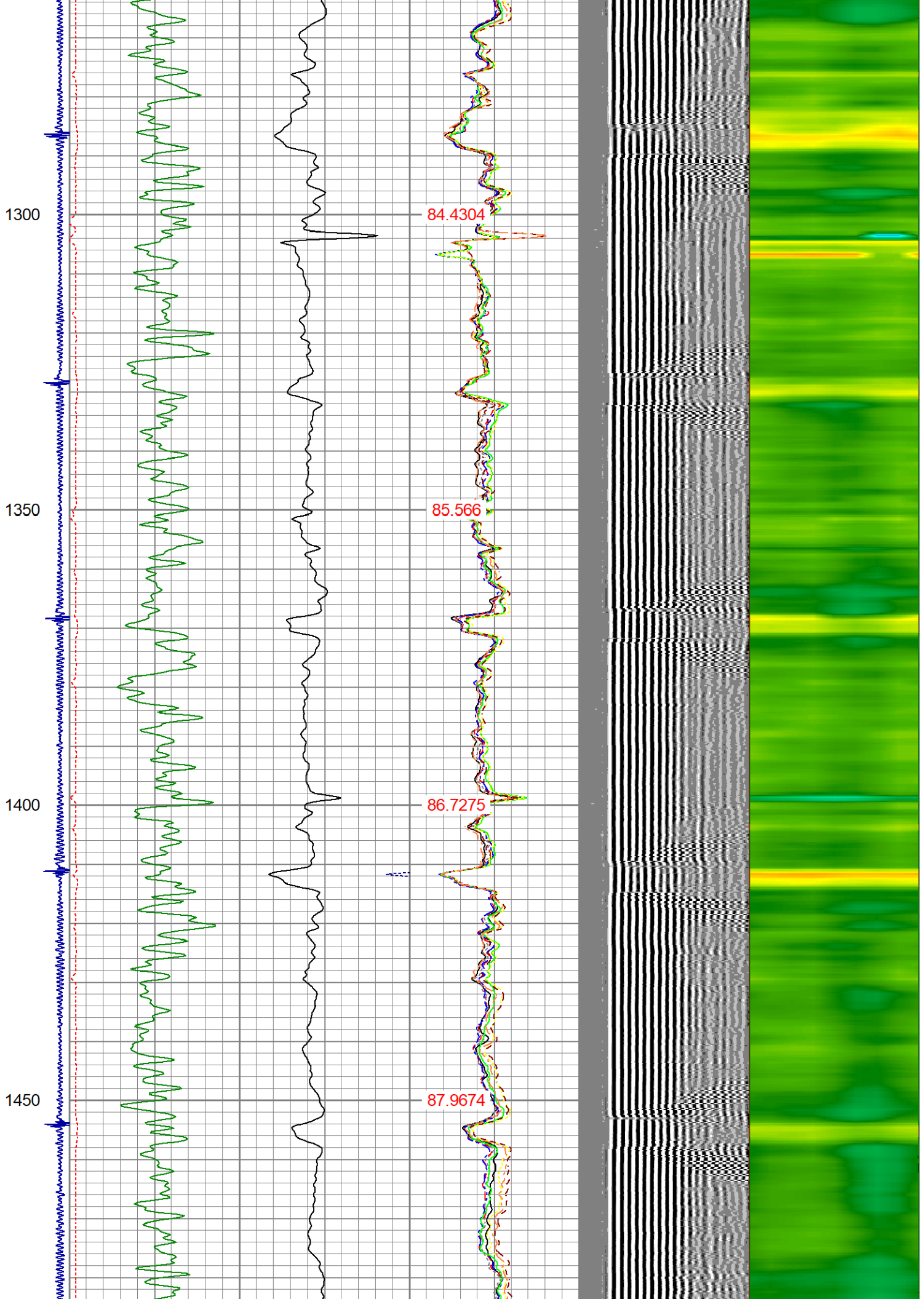


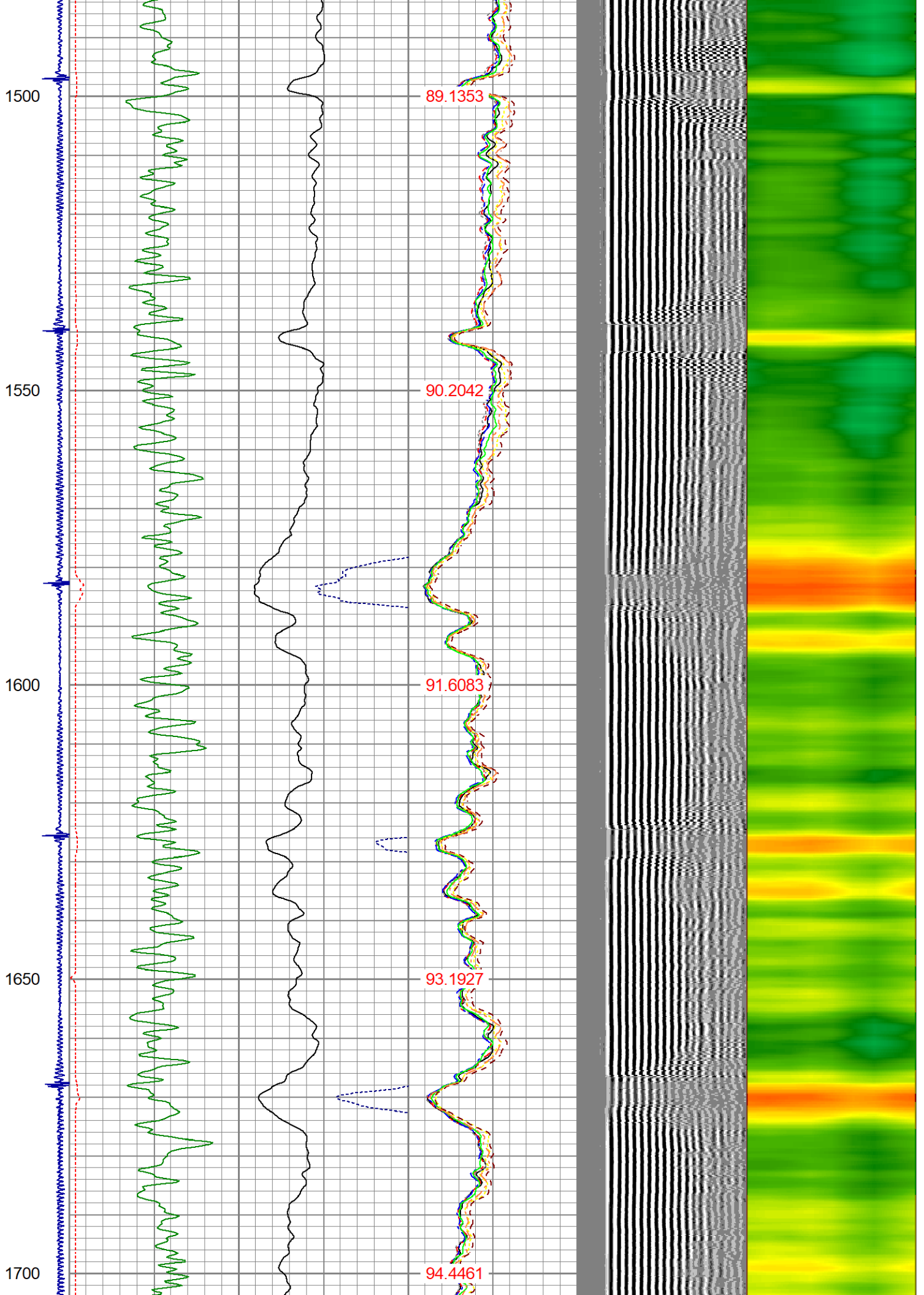


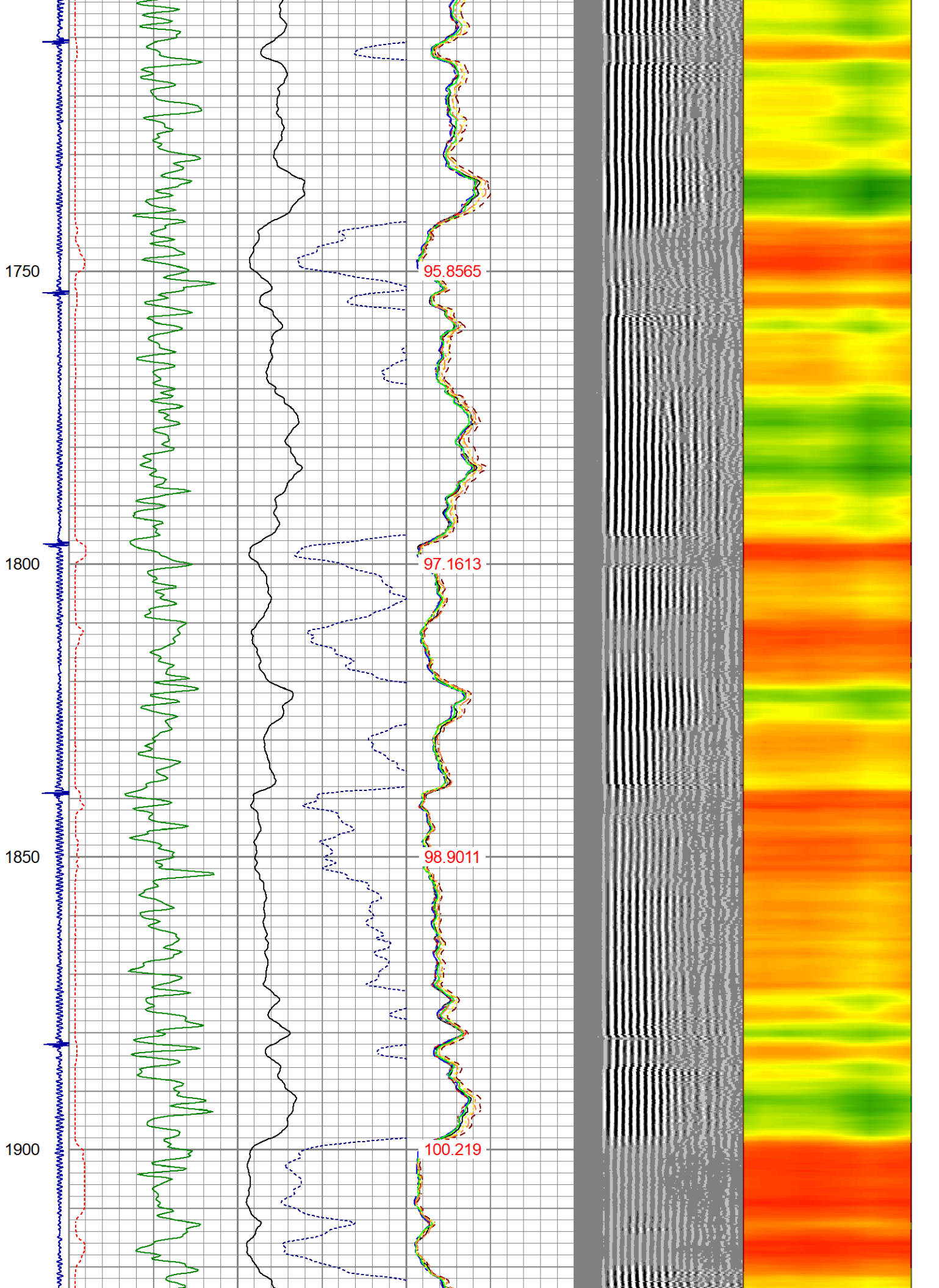


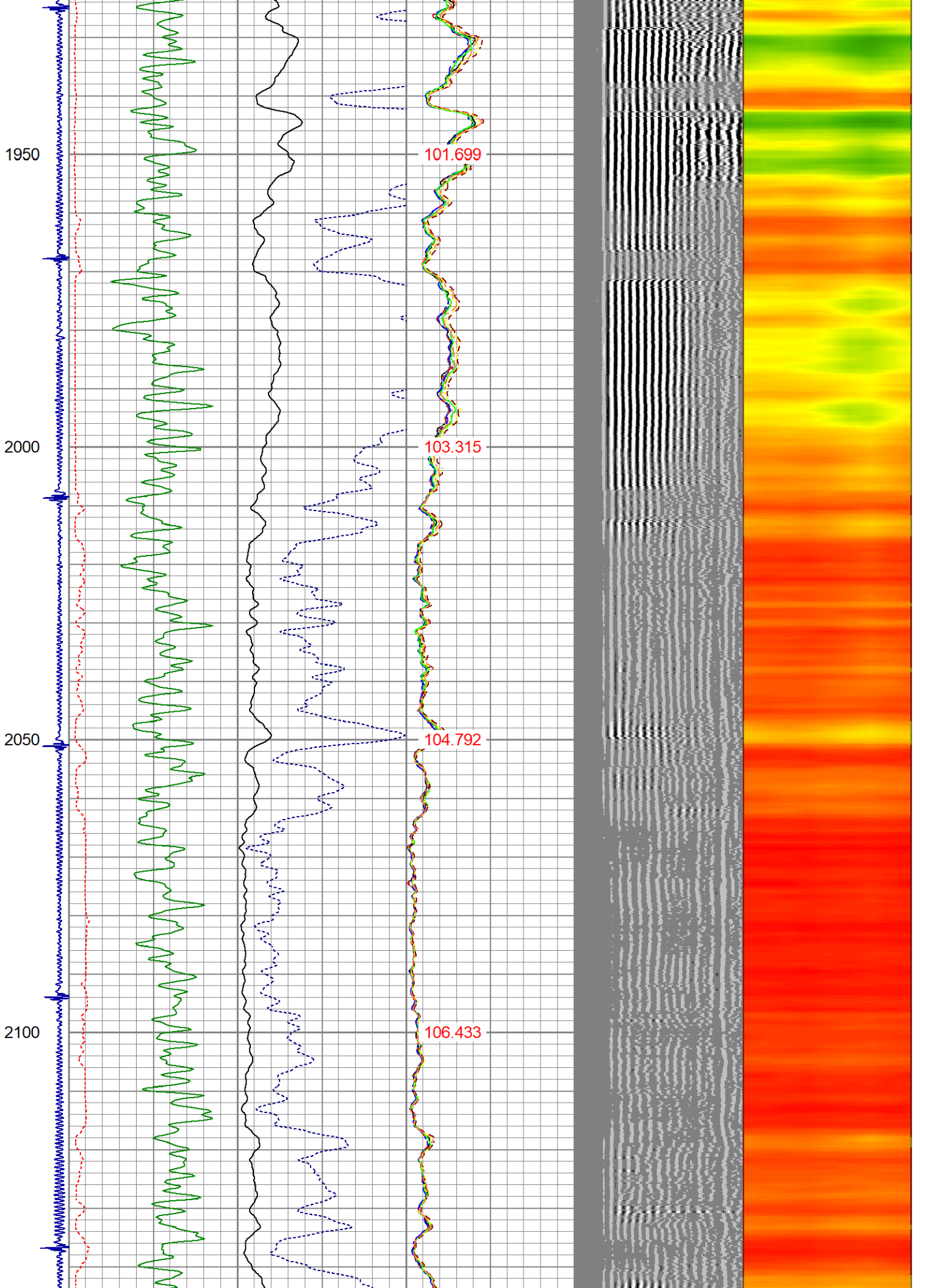


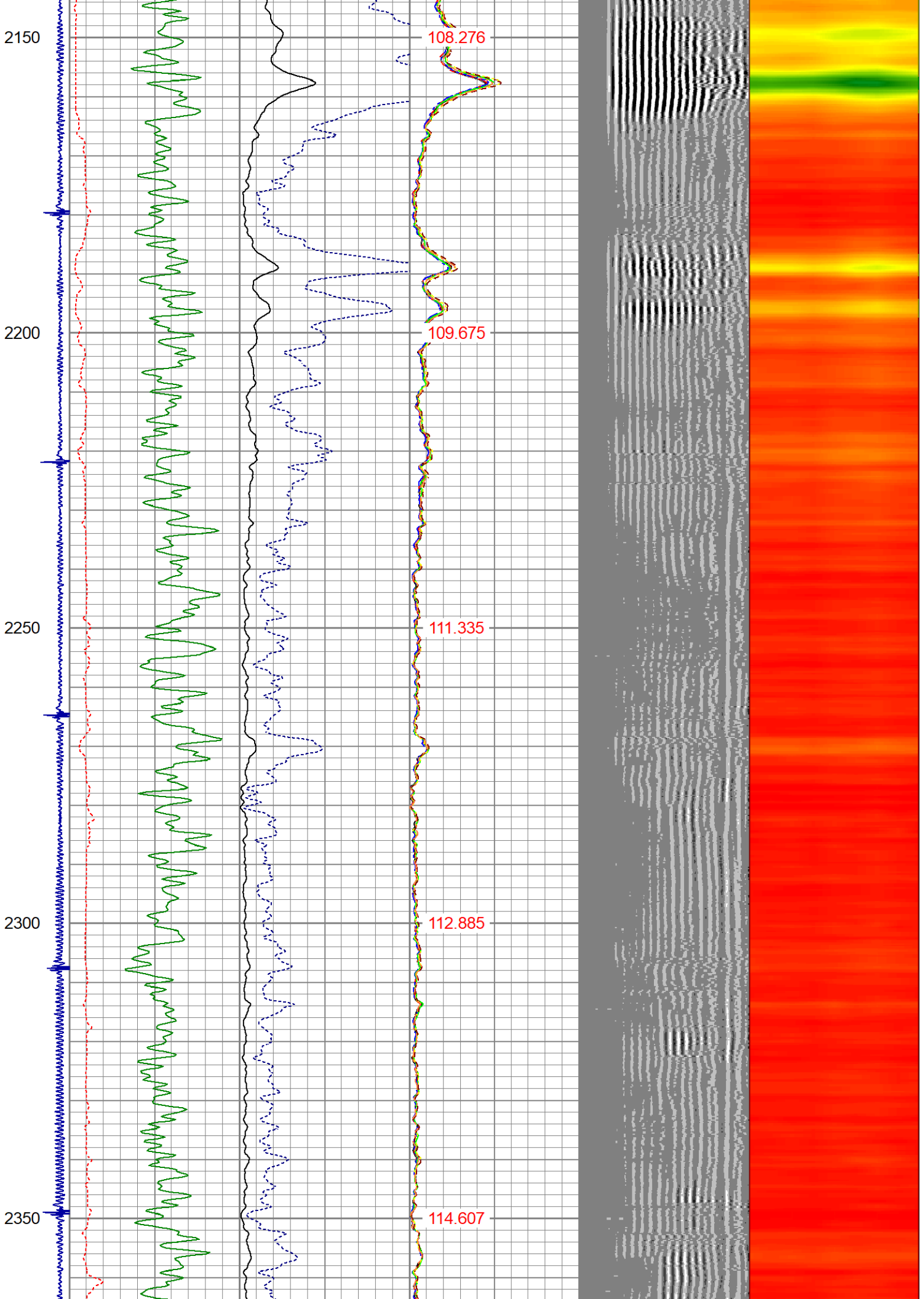


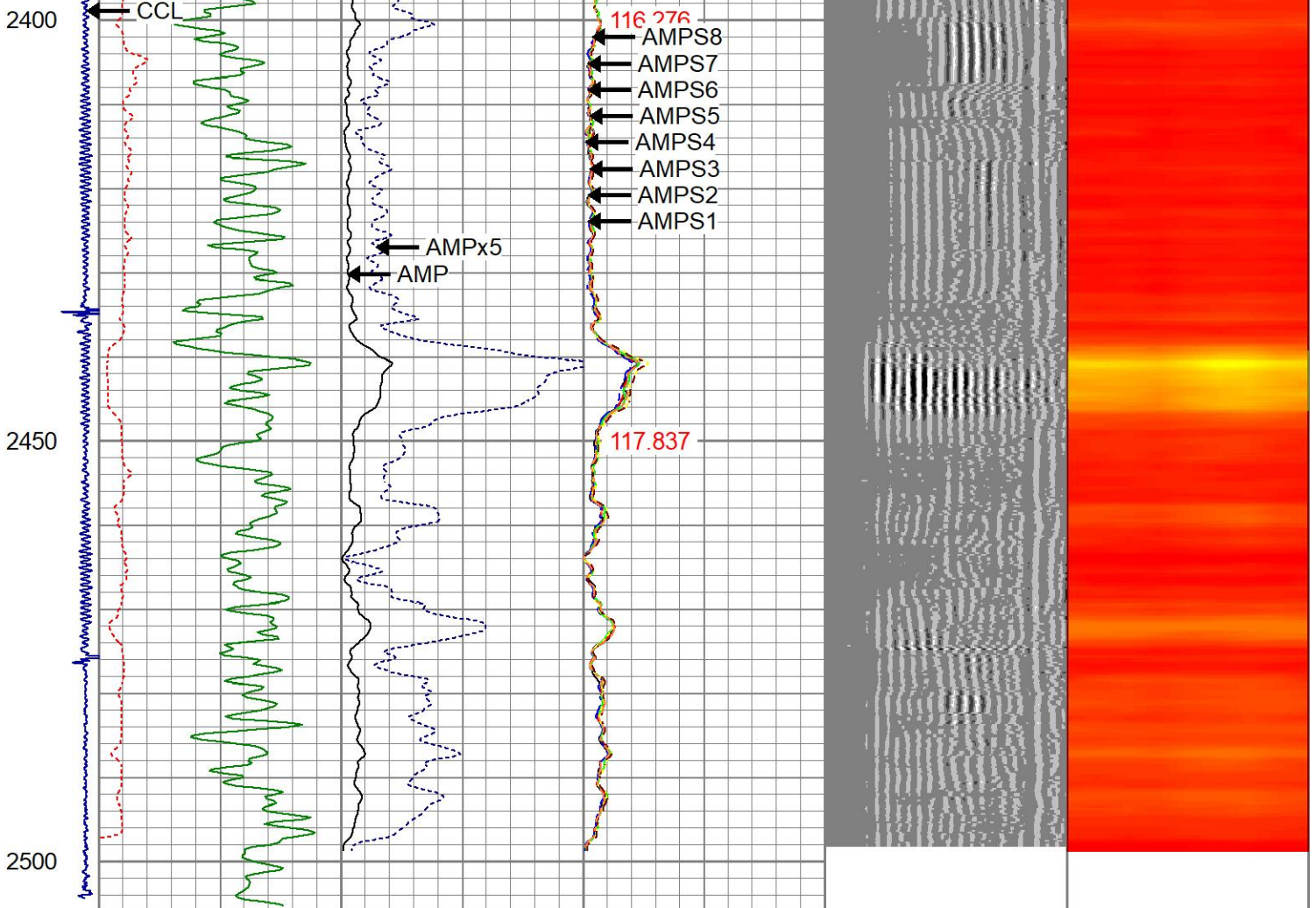












-9	CCL	1	200	TT (usec)	1000	0	AMP (mV)	100	0	AMPS1	100	200	VDL (usec)	1200	1	Cement Map	8	
LSPD	0	GR (GAPI)	200	0	AMPx5 (mV)	20	0	AMPS2	100	0	AMPS3	100	0	AMPS4	100	0	AMPS5	100
(ft/min)	200	GR (GAPI)	400	0	AMPS6	100	0	AMPS7	100	0	AMPS8	100	0	TEMP	(degF)			
0	250																	

Calibration Report

Database File butterball d19-19d.db  
 Dataset Pathname pass21  
 Dataset Creation Fri Sep 09 15:07:37 2022

Serial Number: 27GRL10-XXXX  
 Tool Model: 27GRL10  
 Performed: (Not Performed)

Calibrator Value: 1.0 GAPI

Background Reading: 0.0 cps  
 Calibrator Reading: 1.0 cps

Sensitivity: 1.0000 GAPI/cps

Segmented Cement Bond Log Calibration Report

Serial Number: Greeley Ext Temp  
 Tool Model: 27SBT10

Calibration Casing Diameter: 4.500 in  
 Calibration Depth: 1200.583 ft

Master Calibration, performed (Derived):

	Raw (v)		Calibrated (mv)		Results	
	Zero	Cal	Zero	Cal	Gain	Offset
3'	-0.008	1.082	0.250	81.196	74.257	0.845
CAL	0.000	1.005				
5'	-0.007	0.922	0.250	81.196	87.126	0.835
SUM						
S1	-0.014	0.975	0.000	81.196	82.098	1.167
S2	-0.009	1.000	0.000	81.196	80.456	0.732
S3	-0.010	1.012	0.000	81.196	79.471	0.773
S4	-0.006	1.017	0.000	81.196	79.360	0.513
S5	-0.015	1.002	0.000	81.196	79.842	1.221
S6	-0.013	0.995	0.000	81.196	80.537	1.063
S7	-0.021	0.995	0.000	81.196	79.922	1.644
S8	-0.012	0.992	0.000	81.196	80.930	0.949

Internal Reference Calibration, performed Thu Mar 10 14:36:00 2022:

	Raw (v)		Calibrated (v)		Results	
	Zero	Cal	Zero	Cal	Gain	Offset
CAL	0.000	0.000	0.000	1.005	1.000	0.000

Air Zero Calibration, performed Fri Sep 9 14:24:26 2022:

	Raw (v)		Calibrated (v)		Results	
	Zero		Zero		Offset	
3'	0.000		0.000		0.000	
5'	0.000		0.000		0.000	
SUM						
S1	0.000		0.000		0.000	
S2	0.000		0.000		0.000	
S3	0.000		0.000		0.000	
S4	0.000		0.000		0.000	
S5	0.000		0.000		0.000	
S6	0.000		0.000		0.000	
S7	0.000		0.000		0.000	
S8	0.000		0.000		0.000	



Company	CHEVRON	
Well	BUTTERBALL D19-19D	
Field	WATTENBERG	
County	WELD	
State	CO	Country USA