



**RADIAL BOND TOOL
GAMMA RAY
CCL**

Company CHEVRON
Well BUTTERBALL D19-19D
Field WATTENBERG
County WELD
State CO
Country USA

Company CHEVRON
Well BUTTERBALL D19-19D
Field WATTENBERG
County WELD
State CO
Country USA

Location: API #: 05-123-35585
NENW
LAT. 40.215090 LONG. -104.597180
SEC 19 TWP 3N RGE 64W
Permanent Datum GL Elevation 4790'
Log Measured From KB 13'
Drilling Measured From KB
Other Services
Elevation
K.B. 4803'
D.F. 4802'
G.L. 4790'

Date 6-21-2023
Run Number ONE
Depth Driller 7715'
Depth Logger 1804'
Bottom Logged Interval 1800'
Top Log Interval SURFACE
Open Hole Size 8.625"
Type Fluid WATER
Density / Viscosity NA
Max. Recorded Temp. NA
Estimated Cement Top
Time Well Ready ON ARRIVAL
Time Logger on Bottom NA
Equipment Number 3813
Location GREELEY, CO
Recorded By J. KERR
Witnessed By S. ARREDONDO

Borehole Record			Tubing Record				
Run Number	Bit	From	To	Size	Weight	From	To

Casing Record
Surface String 8.625" Size Vg/ft 24# Top SURFACE Bottom 600'
Prot. String
Production String 4.5" 11.6# SURFACE 7715'
Liner


<<< Fold Here >>>

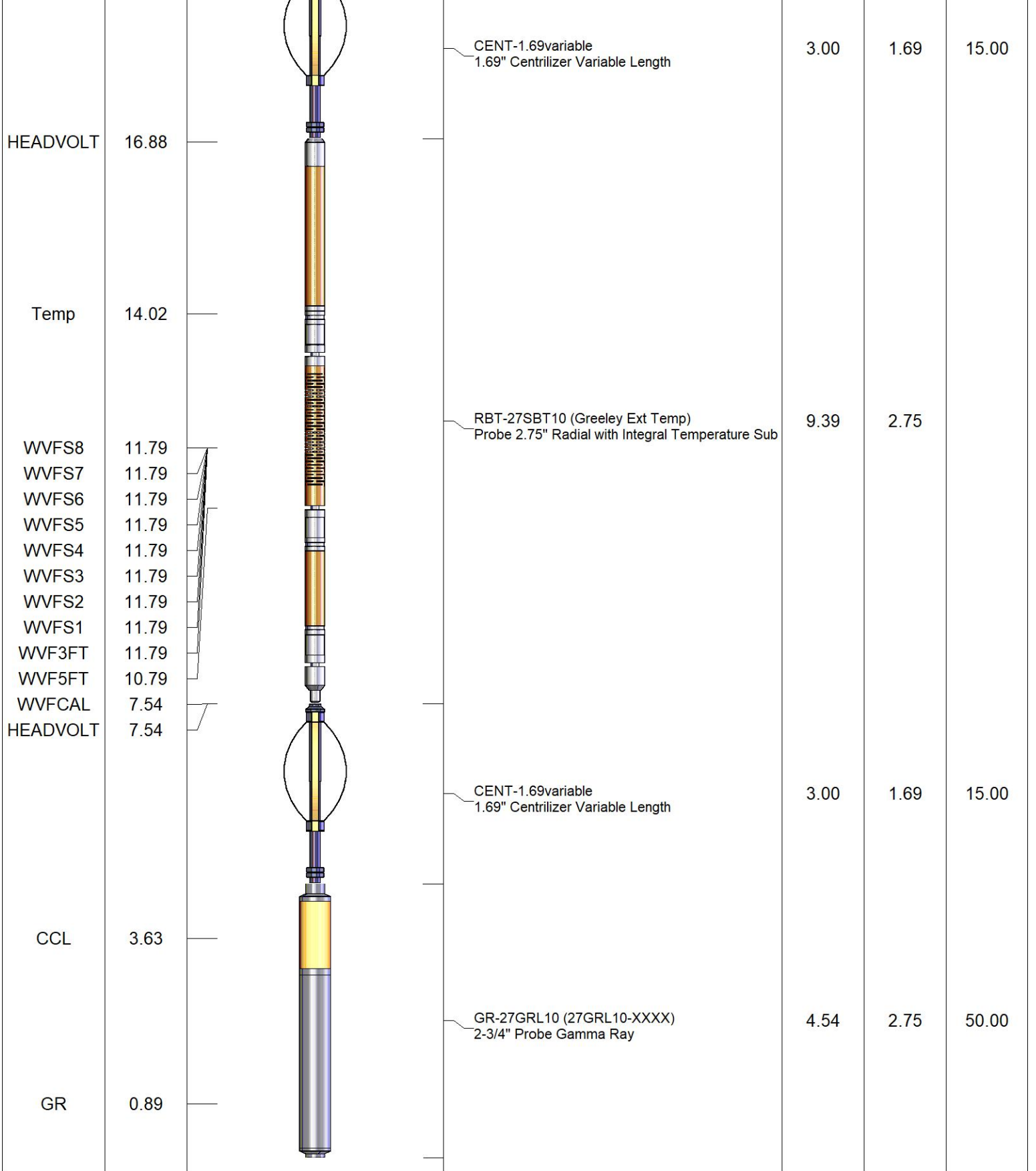
All interpretations are opinions based on inferences from electrical or other measurements and we cannot and do not guarantee the accuracy or correctness of any interpretation, and we shall not, except in the case of gross or willful negligence on our part, be liable or responsible for any loss, costs, damages, or expenses incurred or sustained by anyone resulting from any interpretation made by any of our officers, agents or employees. These interpretations are also subject to our general terms and conditions set out in our current Price Schedule.

Comments

**RAN CBL TO VERIFY CEMENT BOND
WELL LOADED UPON ARRIVAL

CORRELATED TO AXIS CBL RAN 9-5-2022**

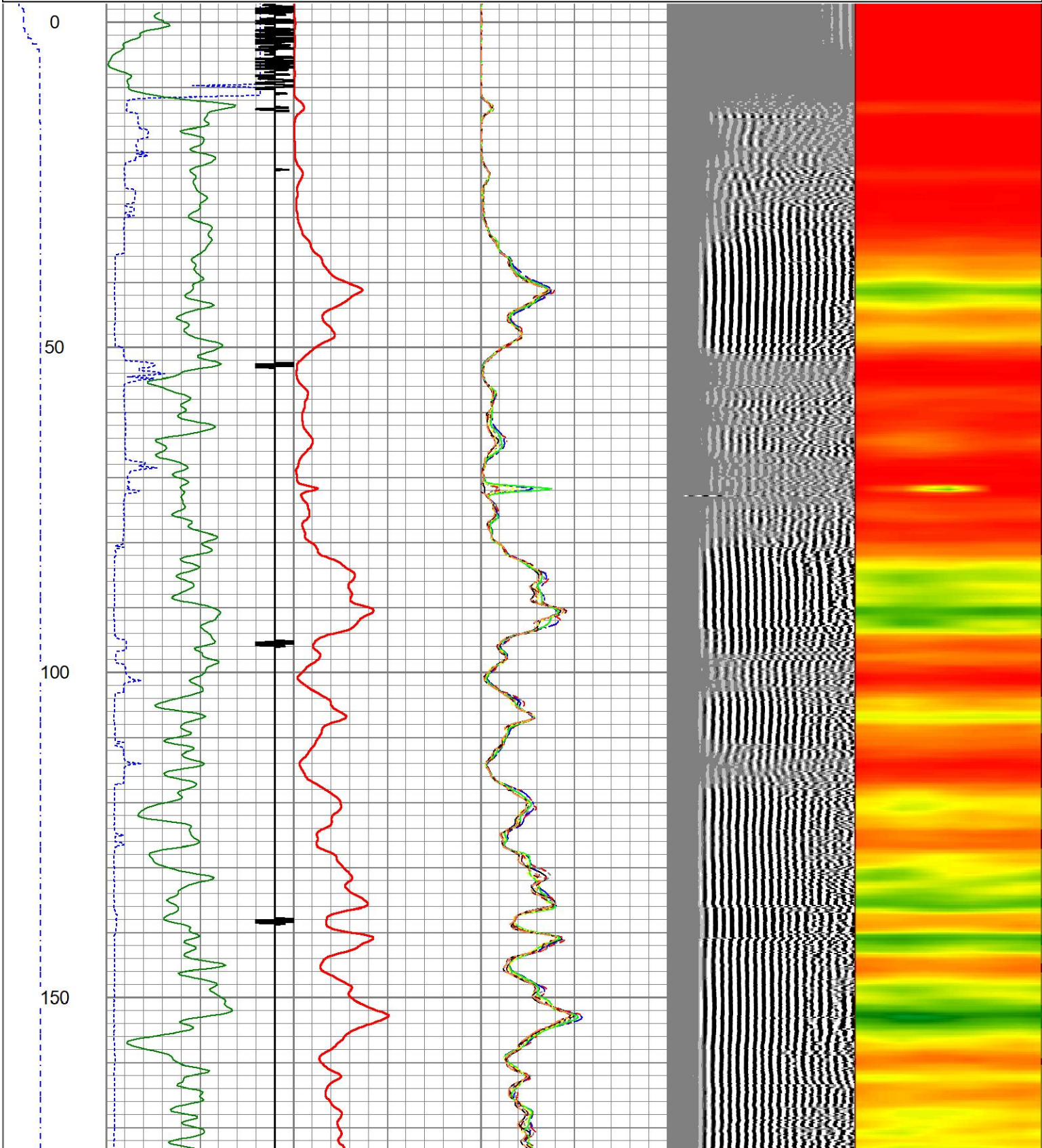
Sensor	Offset (ft)	Schematic	Description	Length (ft)	O.D. (in)	Weight (lb)
			CHD-1_11/16_Cablehead 1 11/16 Cablehead	1.00	1.68	5.00

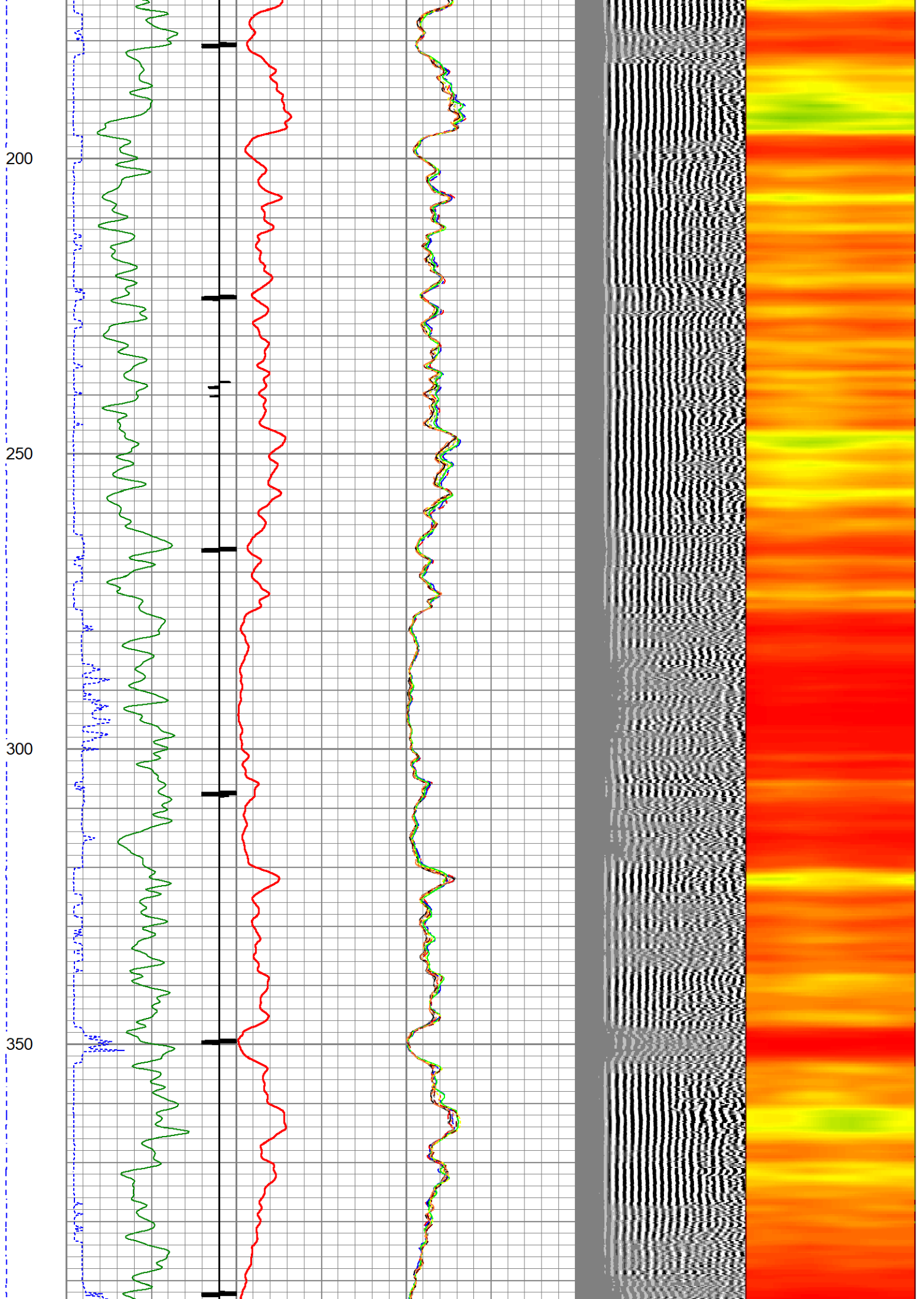


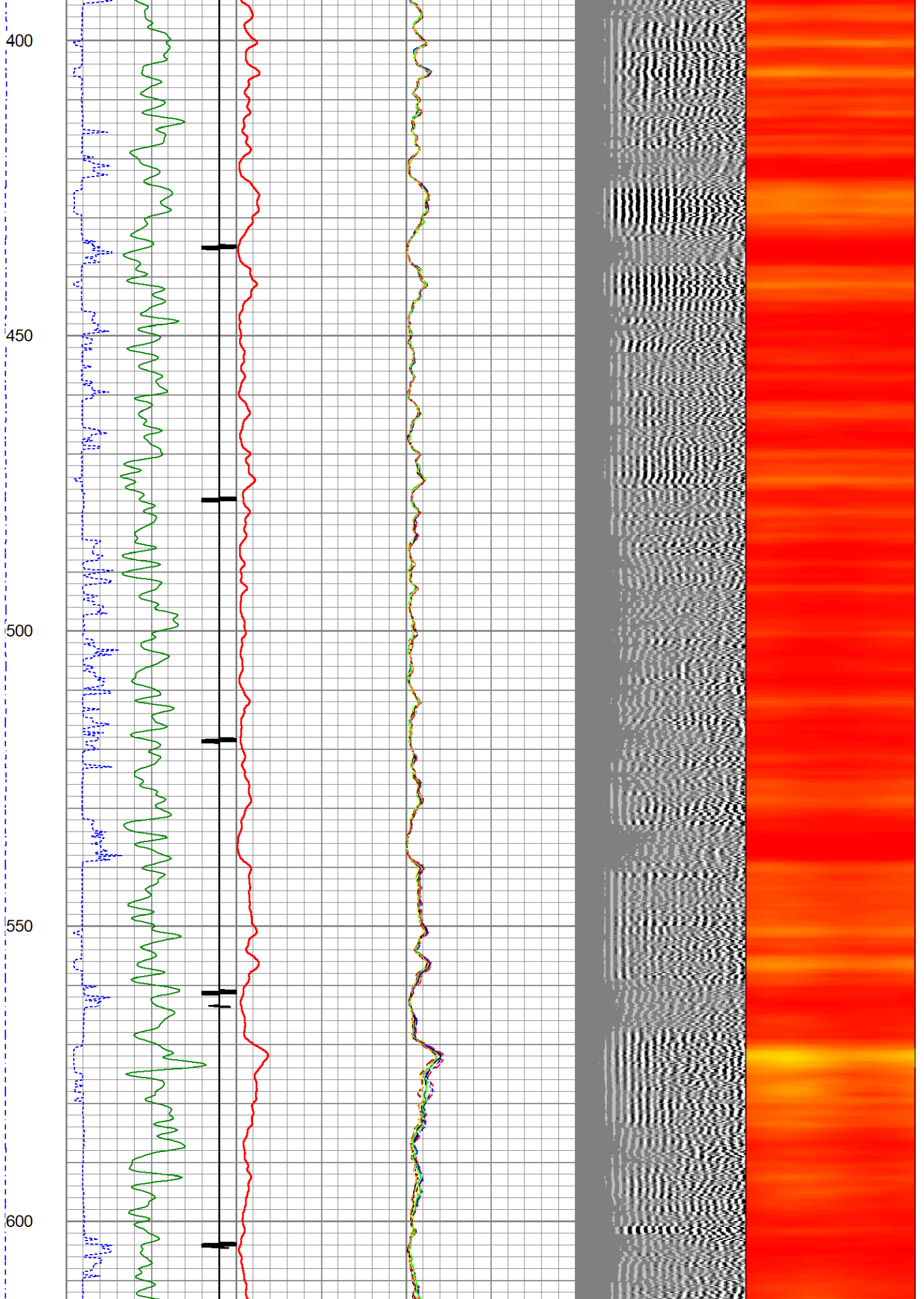
Dataset: butterball d 19-19 d.db: field/well/run2/pass3
 Total length: 20.93 ft
 Total weight: 85.00 lb
 O.D.: 2.75 in

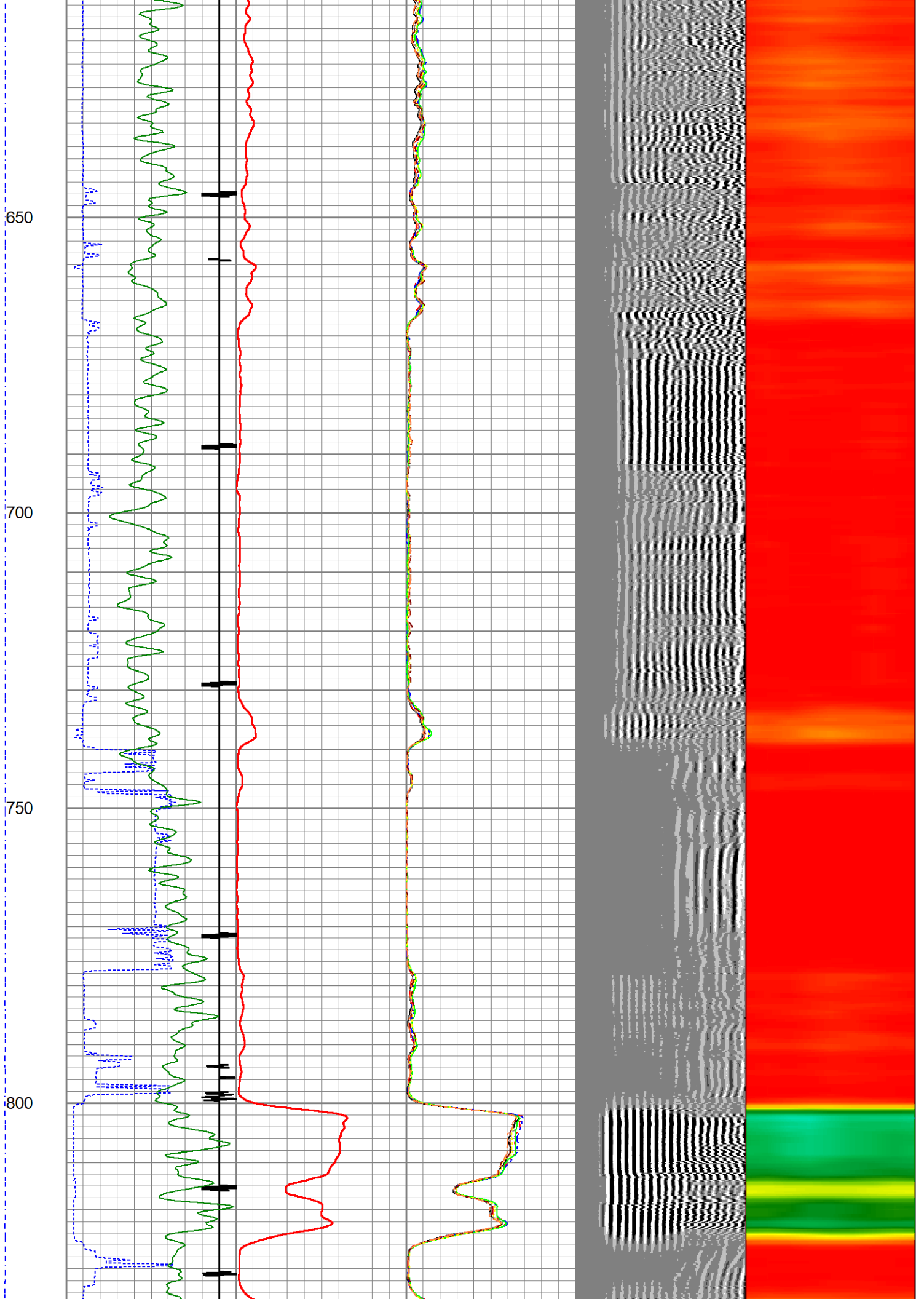
Database File butterball d 19-19 d.db
 Dataset Pathname run2/pass3
 Presentation Format ips_rbt Civitas
 Dataset Creation Wed Jun 21 13:47:23 2023
 Charted by Depth in Foot scaled 1:240

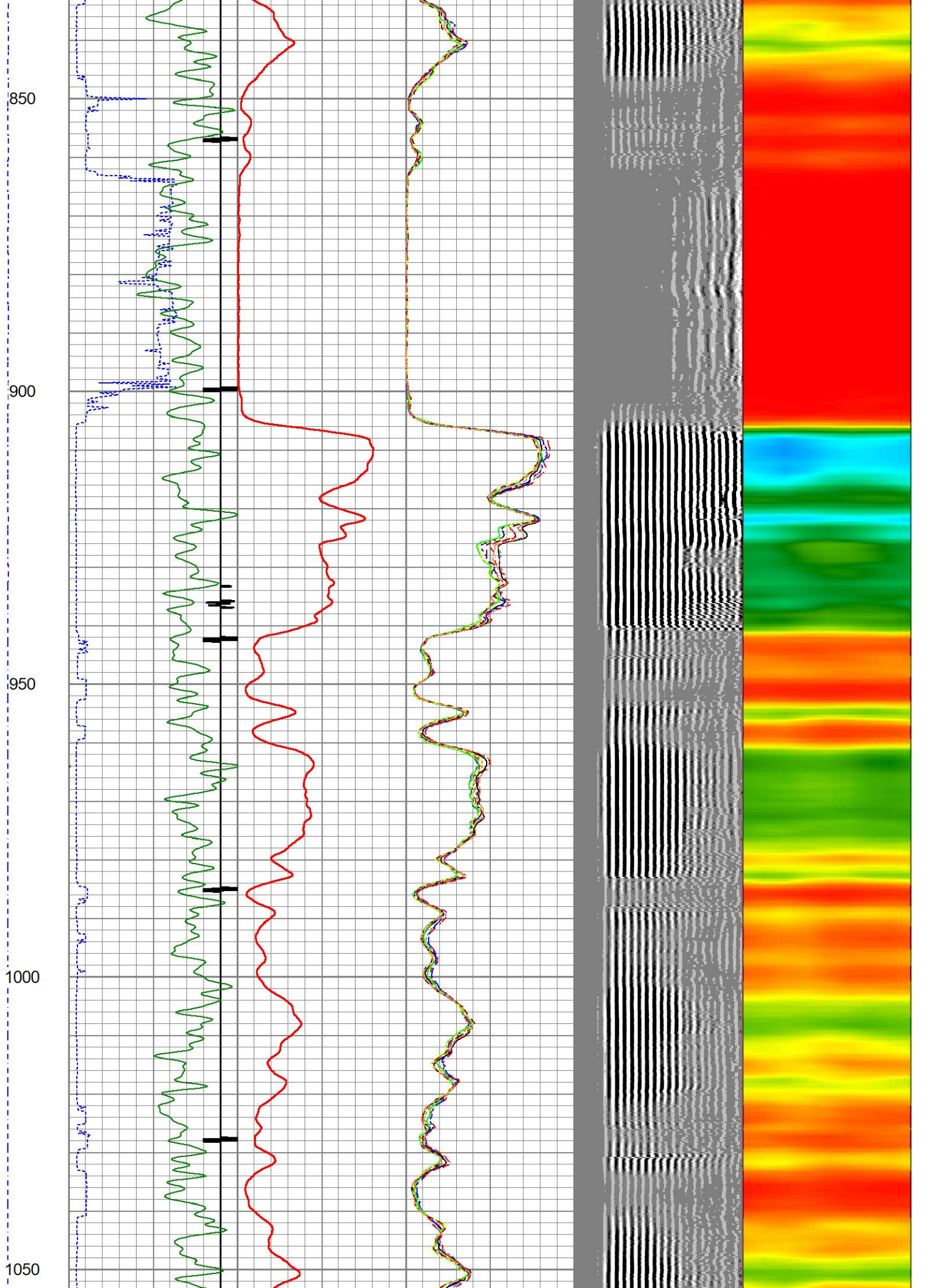
LSPD	200	TT (usec)	1000	0	AMP (mV)	100	0	AMPS1	100	200	VDL (usec)	1200	1	Cement Map	8
(ft/min)	-9	CCL	1				0	AMPS2	100						
0	250	GR (GAPI)	150				0	AMPS3	100						
		GR (GAPI)	400				0	AMPS4	100						
							0	AMPS5	100						
							0	AMPS6	100						
							0	AMPS7	100						
							0	AMPS8	100						

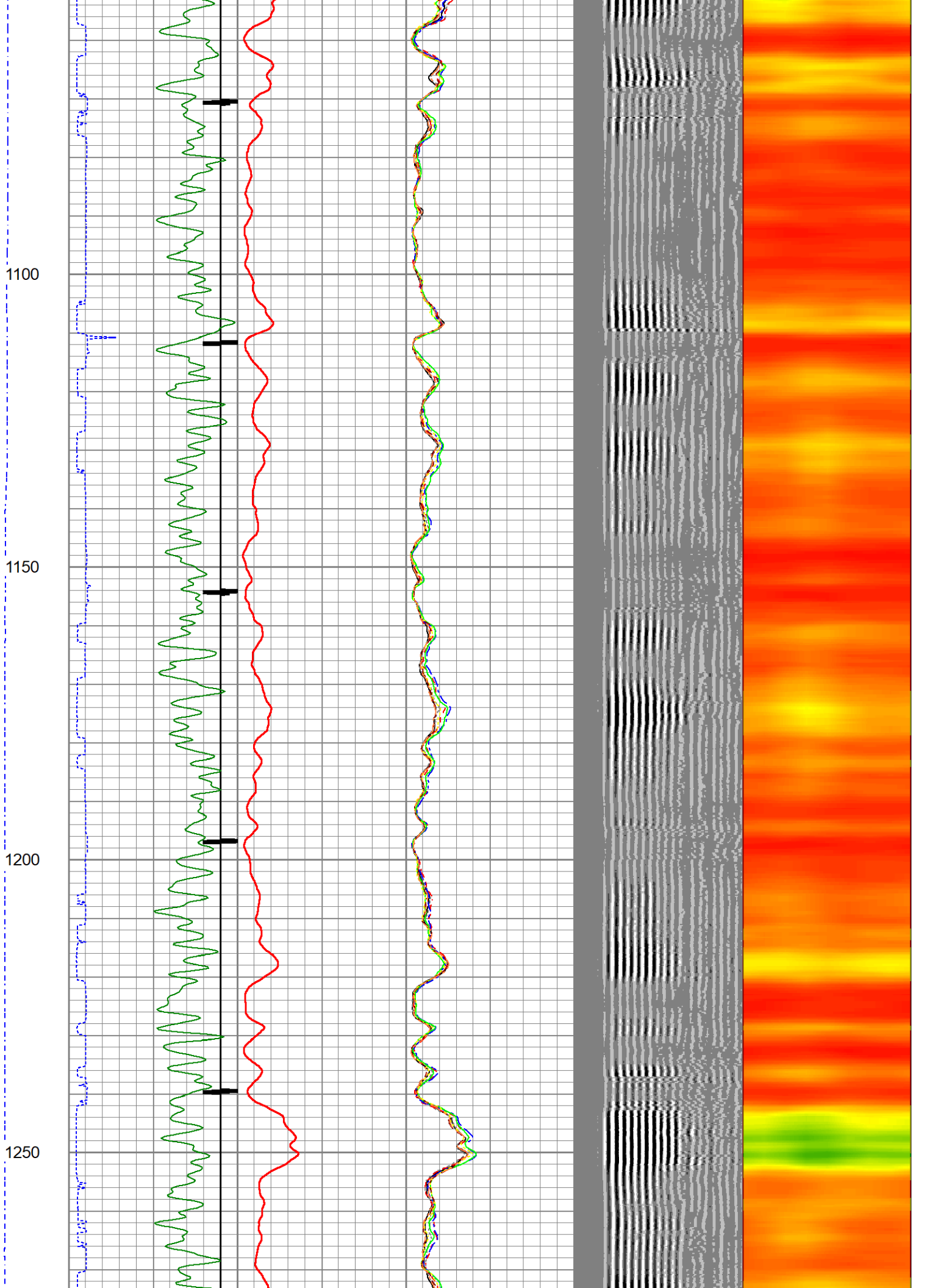










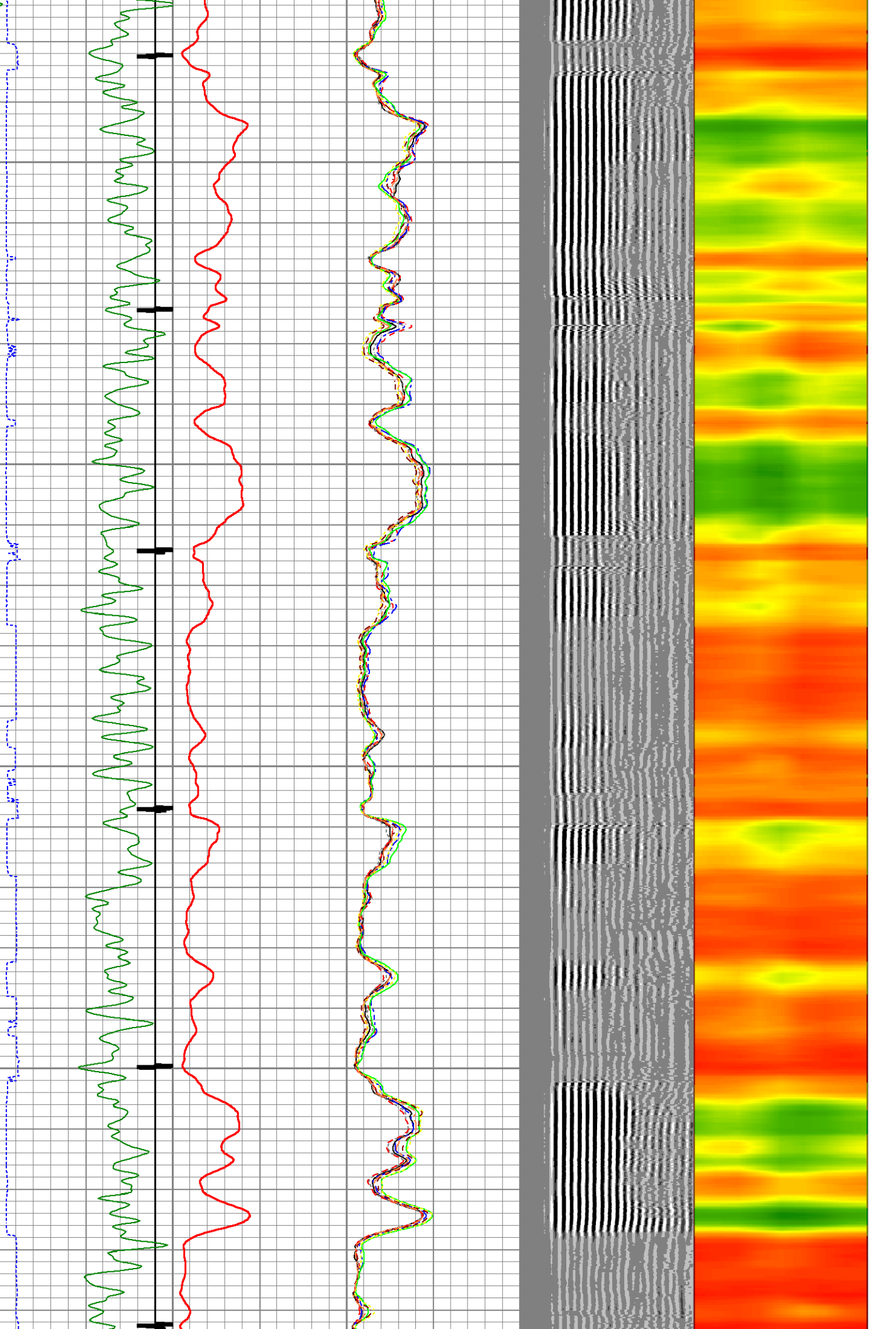


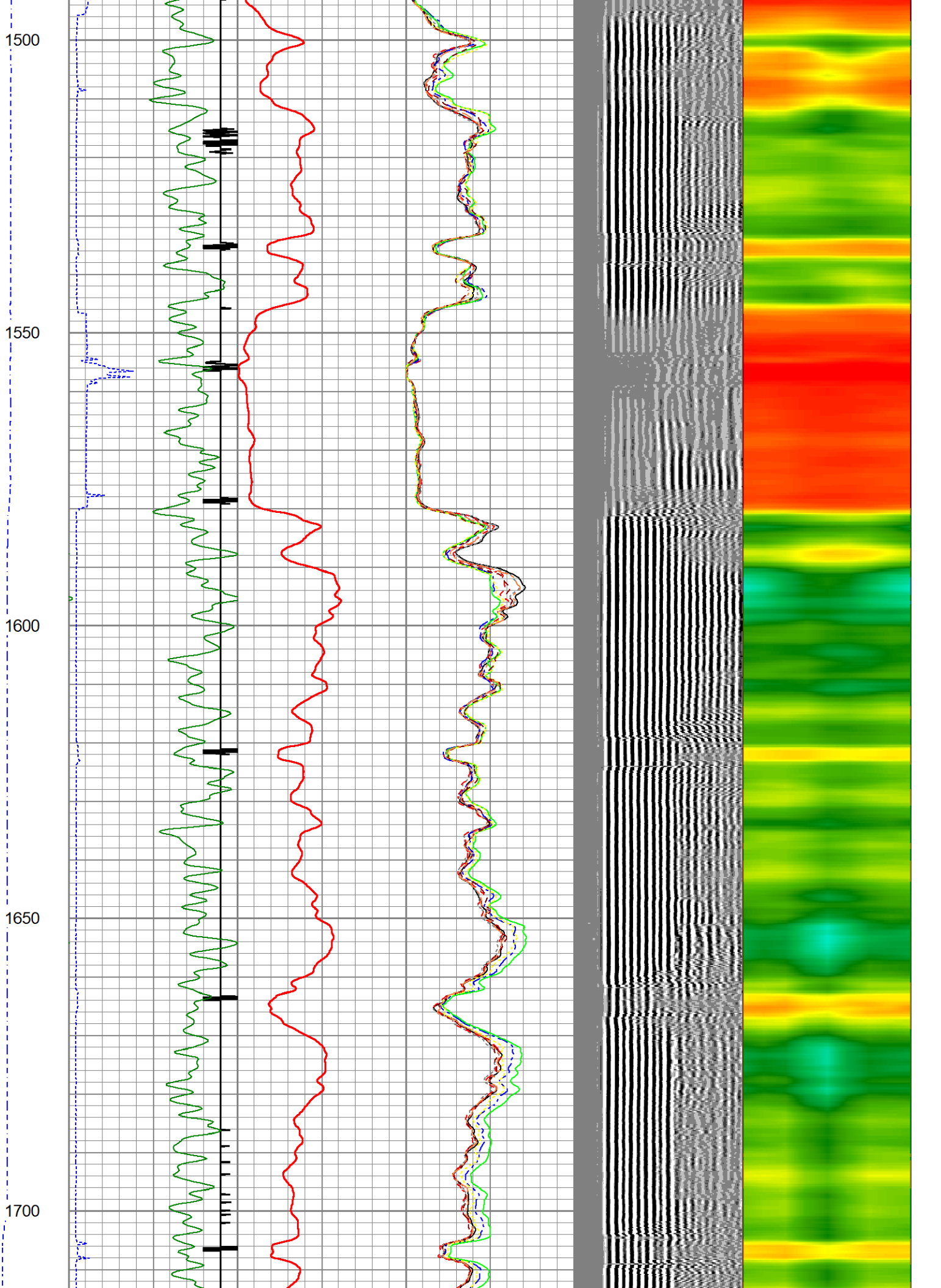
1300

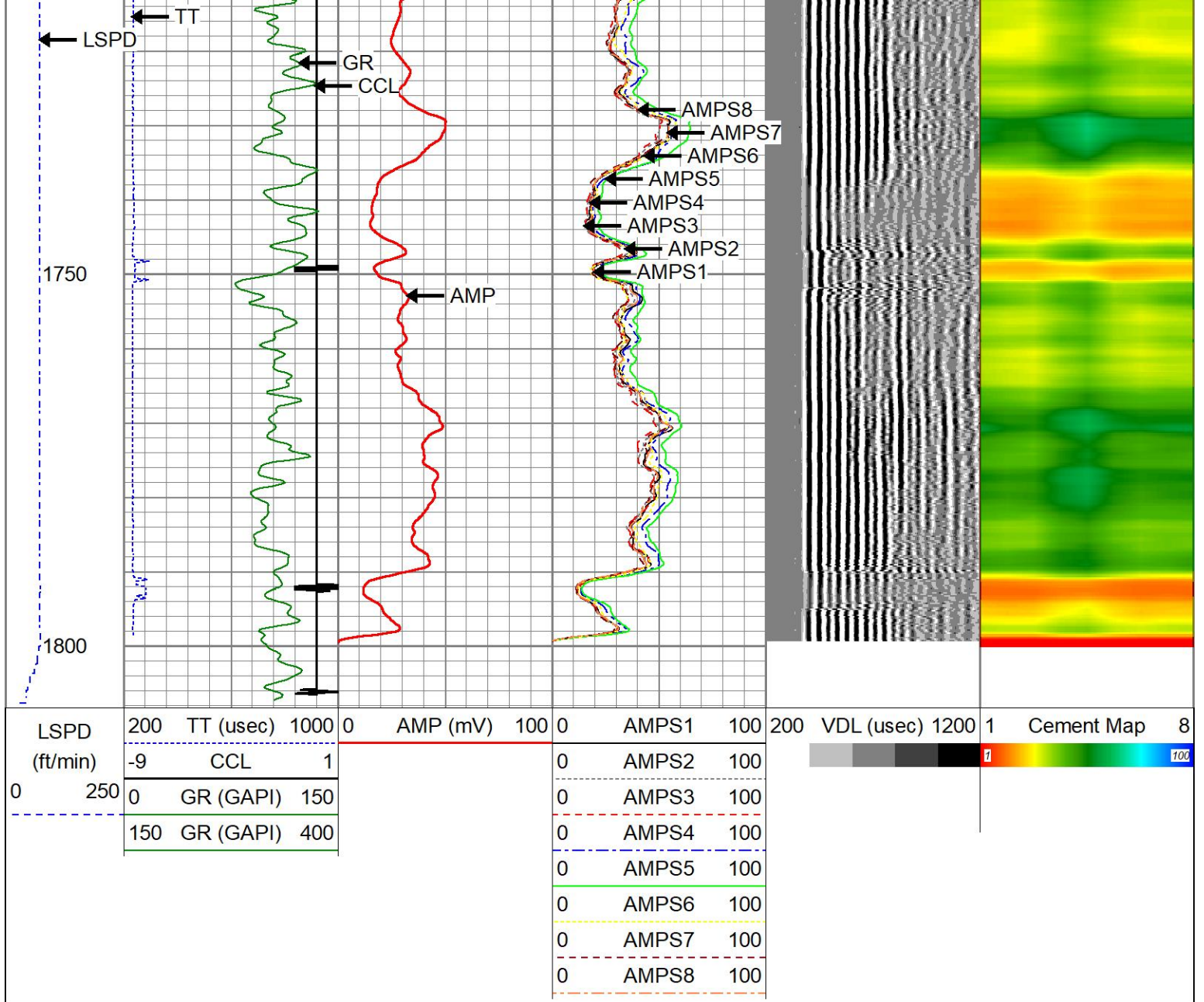
1350

1400

1450







Calibration Report

Database File butterball d 19-19 d.db
 Dataset Pathname run2/pass3
 Dataset Creation Wed Jun 21 13:47:23 2023

Gamma Ray Calibration Report

Serial Number: 27GRL10-XXXX
 Tool Model: 27GRL10
 Performed: (Not Performed)

Calibrator Value: 1.0 GAPI

Background Reading: 0.0 cps
 Calibrator Reading: 1.0 cps

Sensitivity: 1.0000 GAPI/cps

Segmented Cement Bond Log Calibration Report

Serial Number: Greeley Ext Temp
 Tool Model: 27SBT10

Calibration Casing Diameter: 4.500 in

Master Calibration, performed Wed Jun 21 13:44:30 2023:

	Raw (v)		Calibrated (mv)		Results	
	Zero	Cal	Zero	Cal	Gain	Offset
3'	0.013	1.342	0.250	81.196	60.926	-0.539
CAL	0.015	1.442				
5'	0.020	0.986	0.250	81.196	83.732	-1.392
SUM						
S1	0.017	1.252	0.000	81.196	65.728	-1.094
S2	0.015	1.245	0.000	81.196	65.987	-0.977
S3	0.021	1.277	0.000	81.196	64.644	-1.364
S4	0.022	1.386	0.000	81.196	59.539	-1.330
S5	0.021	1.419	0.000	81.196	58.093	-1.222
S6	0.020	1.402	0.000	81.196	58.734	-1.153
S7	0.016	1.356	0.000	81.196	60.597	-0.988
S8	0.019	1.308	0.000	81.196	63.003	-1.189

Internal Reference Calibration, performed Wed Sep 7 12:57:05 2022:

	Raw (v)		Calibrated (v)		Results	
	Zero	Cal	Zero	Cal	Gain	Offset
CAL	0.000	0.000	0.015	1.442	1.000	0.000

Air Zero Calibration, performed Wed Jun 21 12:54:24 2023:

	Raw (v)		Calibrated (v)		Results	
	Zero		Zero		Gain	Offset
3'	0.000		0.000			0.000
5'	0.000		0.000			0.000
SUM						
S1	0.000		0.000			0.000
S2	0.000		0.000			0.000
S3	0.000		0.000			0.000
S4	0.000		0.000			0.000
S5	0.000		0.000			0.000
S6	0.000		0.000			0.000
S7	0.000		0.000			0.000
S8	0.000		0.000			0.000



Company	CHEVRON	
Well	BUTTERBALL D19-19D	
Field	WATTENBERG	
County	WELD	
State	CO	Country USA