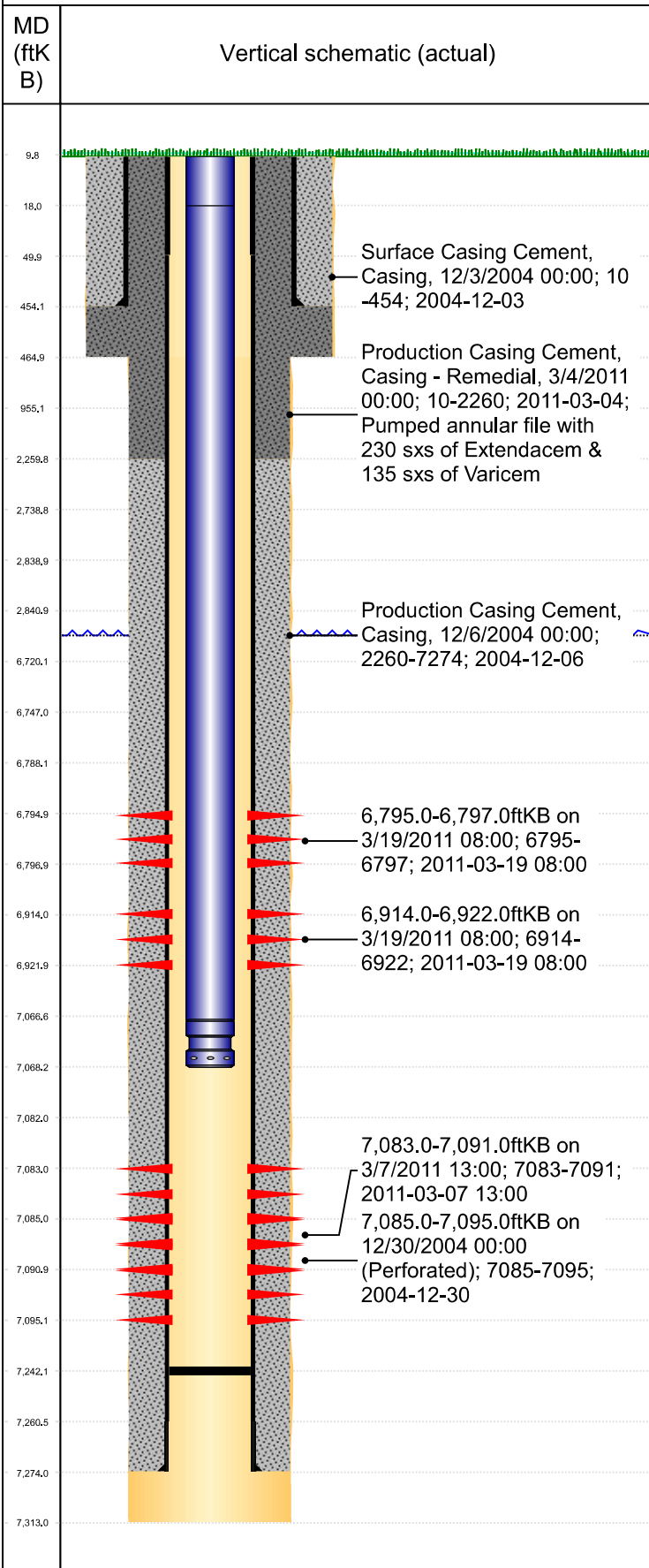




P&A Wellbore For State

Well Name: Pfenning 44-31

Original Hole [Land]



Well Header				
Surface UWI	Business Unit	Gov Auth Dist	Prod Tree Loc	
0512322574	Rockies	Evans	Land	
Orig. KB to Gnd (ft)	Original Spud Date	Abandon Date	Well Sub-Status	High...
10.00	12/2/2004		PR	N
Comment				

Surface Location (Congressional)								
Qtr 3	Qtr 4	Section	Twtnshp	Twtnsh...	Range	Rng E/...	Latitude (°)	Longitude (°)
SE	SE						40.52461	-104.58664

Wellbore Sections			
Section Des	Hole Size (in)	Top Depth (ftKB)	Btm Depth (ftKB)
Surface	12 1/4	10.0	465.0
Production	7 7/8	465.0	7,313.0

Casing Strings						
Csg Des	Run Date	OD (in)	Wt/Len (lb/ft)	Grade	Top Depth (MD) (ftKB)	Set Depth (MD) (ftKB)
Surface	12/3/2004	8 5/8	24.00	J-55	10	454
Production	12/6/2004	4 1/2	10.50	M-65	10	7274

Cement			
Des	Start Date	Top (ftKB)	Btm (ftKB)
	12/3/2004	10.0	454.0
	12/6/2004	2,260.0	7,274.0
Production Casing Cement	3/4/2011	10.0	2,260.0

Zone Statuses					
Zone Name	Status Date	Status	Fluid Type	Job	Prod Method

Perforation Data					
Linked Zone	Explosive Type	Entered Shot Total	Top (ftKB)	Btm (ftKB)	Date
Niobrara_A, Original Hole			6,795.0	6,797.0	3/19/2011
Niobrara_B, Original Hole			6,914.0	6,922.0	3/19/2011
Codell, Original Hole			7,083.0	7,091.0	3/7/2011
Codell, Original Hole			7,085.0	7,095.0	12/30/2004

Stim/Frac Stage			
Zone	Start Date	Top (ftKB)	Btm (ftKB)
Codell, Original Hole	12/30/2004		
Codell, Original Hole	3/19/2011		
Niobrara, Original Hole	3/19/2011		

Other In Hole					
Run Date	Des	Make	OD (in)	Top (ftKB)	Btm (ftKB)

Logs			
Date	Type	Depth Top (MD) (ftKB)	Btm (ftKB)

Wellbore Plug Back Total Depths			
Date	Type	Com	PBTD (ftKB)
3/24/2011	Plug	Drillout frac plug and push to 7242	7,242