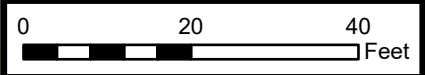
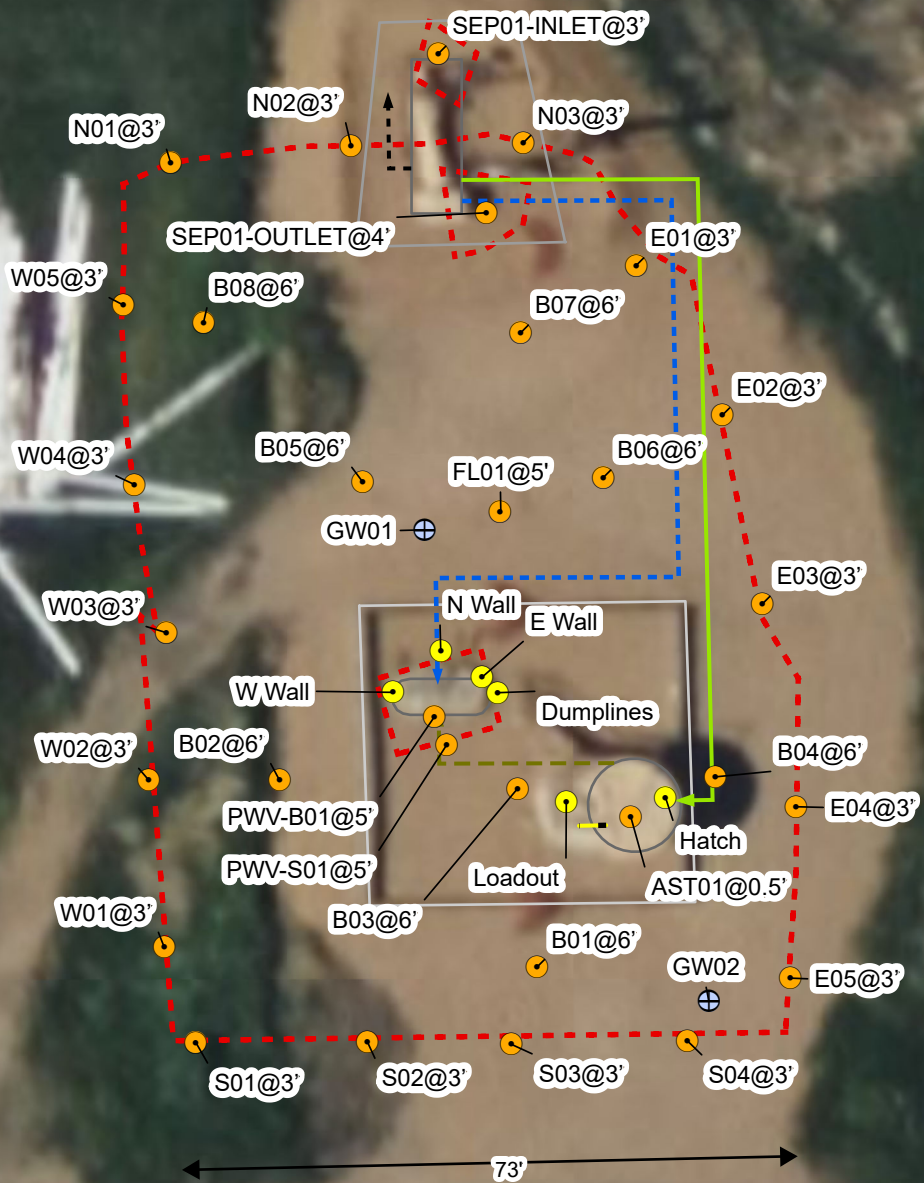


Legend

- Soil Sample
- Soil Screening
- ⊕ Groundwater Sample
- Former Drain Line
- Former Drip Containment
- - - Former Gas Line
- Former Oil Dump
- Former Water Dump
- Former Earthen Berm
- Former Metal Berm
- Former Infrastructure
- Excavation Extent



Default Folder: C:\Users\Margan\OneDrive - ENSOLUM, LLC\Ensolium\GIS0 - Projects\Kerr-McGee Oil & Gas Onshore, LP\09A1417648 - GNB W 31-3,4,5J,6 Facility



Sources: Environmental Systems Research Institute (ESRI)

Excavation Site Map

GNB W 31-3,4,5J,6 Facility
 Kerr-McGee Oil & Gas Onshore, LP
 NWNW SEC 31-T2N-R66W
 Weld County, CO

Project Number: 09A1417648

FIGURE

1

