

PO Box 329

**Ft. Lupton, CO 80621
(303) 654-9202**

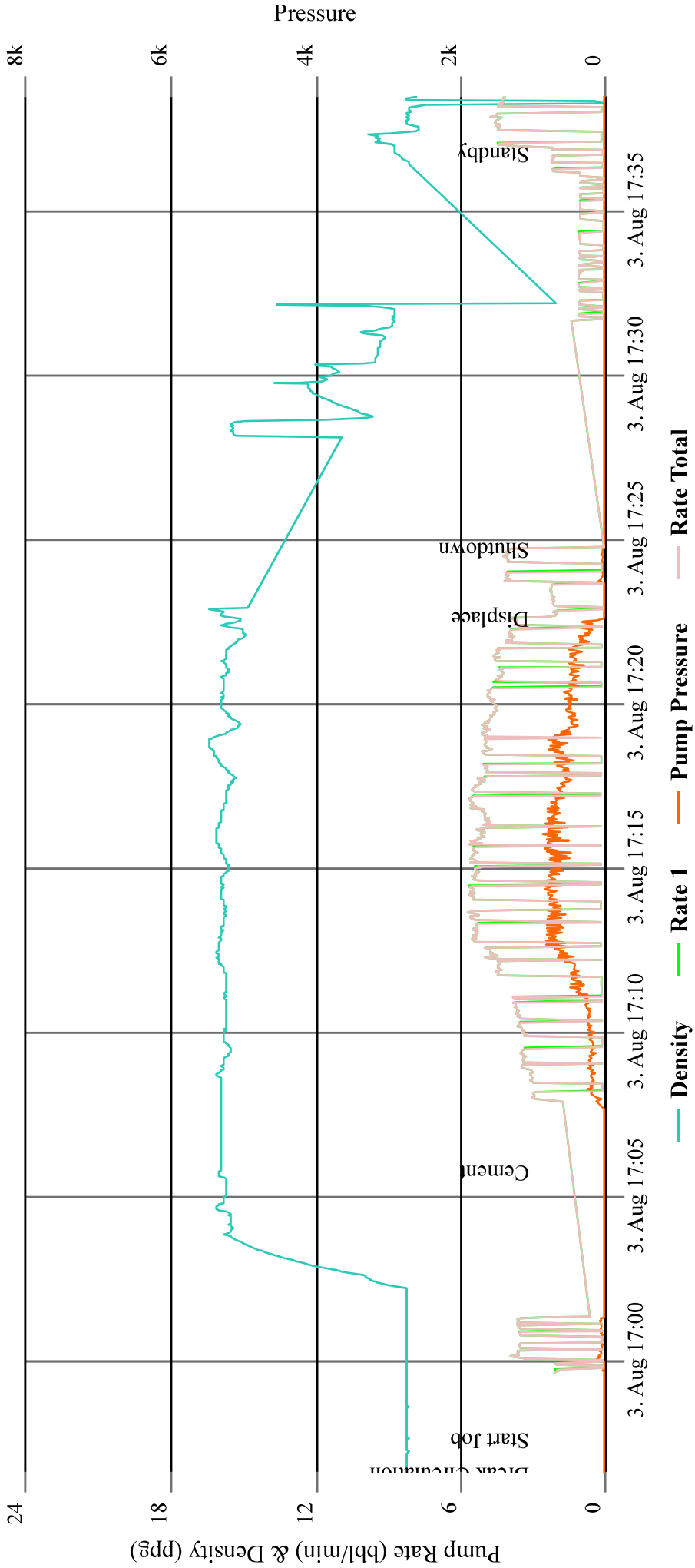
"Here Safety Meets Quality at the Axis of Efficiency"

Date of Service	Job Type	Customer	Consultant	Well Name	Last Tckt	Ticket #	
8/3/2024	Balance Plug	OXY	Jeremy Caldwell	CPC 4-42-4	No	3734	
State	County	API		Rig	Operator		
Colorado	Weld	05-123-08861		Ensign 122	Charles Bachelder		
Well Information					Water		
	Work String	Prod CSG	Surface	OH (I.D.)	Annular	Temp	
OD & Weight	DP 4 1/2" 16.6#			7.875		80 °F	
bbl/ft Factor	0.01422	0	0	0.0602		PH 7	
Length in ft	4100		614	500		Chloride 2	
Capacity in bbls	58.30	0.00	0.00	30.12	0.00	Well Description	Depth in Ft
OD & Weight	DP 4 1/2" 16.6#			7.875		EOT	4,100
bbl/ft Factor	0.01422	0	0	0.0602		TOC	3,600
Length in ft	2800			500		EOT	2,800
Capacity in bbls	39.82	0.00	0.00	30.12	0.00	TOC	2,300
OD & Weight	DP 4 1/2" 16.6#			7.875			
bbl/ft Factor	0.01422	0	0	0.0602		EOT	2,000
Length in ft	2000			500		TOC	1,500
Capacity in bbls	28.44	0.00	0.00	30.12	0.00		
Buoyancy	0.87	Buoyancy	0.87	Buoyancy	0.87		
Lift Pressure 3723	PRV 2500	Lift Pressure 2543	PRV 1750	Lift Pressure 1816	PRV 1250		
Drivers, Crew and Equipment Allocation							
Driver and Heavy Duty Equipment				Crew and Light Duty Equipment			Misc. Tools or Equipment
Driver	Tractor	Trailer	Mileage	Crew	Equipment	Mllege	Required or Requested
Fabian Guerrero	338187	P 4787		Charles Bachelder	6071		
Cole West	1447	B 7520		Isayah Karaffa			
Isaac Bustillos-Solano	5482	B 3048					
Isaac Bustillos-Solano	8109	B 7016					
Total Heavy Duty Mileage			0	Total Light Duty Mileage		0	
Sussex Blend	285	Lower AGM	285	Upper AGM	285	Job Specific Remarks	
Class G 94lb/sk	26,790.0	Class G 94lb/sk	26,790	Class G 94lb/sk	26,790	First job calculated 7 7/8 with 100% exess, second job calculated 7 7/8 with 100%exess, Third job calculated 7 7/8 with 100% exess	
CaCL2	-	CaCL2	268	CaCL2	402		
Gypsum	535.8	Gypsum	1,072	Gypsum	1,072		
RFL-1 (latex)	-	RFL-1 (latex)	107	RFL-1 (latex)	107		
Defoamer	80.4	Defoamer	80	Defoamer	80		
RFL-70X(Latex)	107.2	RFL-70X(Latex)	-	RFL-70X(Latex)	-		
RFL-9(Fluid Loss)	67.0	RFL-9(Fluid Loss)	-	RFL-9(Fluid Loss)	-		
RCD-3(Dispersant)	80.4	RCD-3(Dispersant)	-	RCD-3(Dispersant)	-		
RCR-201(Retarder)	-	RCR-201(Retarder)	-	RCR-201(Retarder)	-		
PreMag	-	PreMag	-	PreMag	-		
THIX-C2	-	THIX-C2	-	THIX-C2	-		
Silica Flour	-	Silica Flour	-	Silica Flour	-		
Desc	Qty	Rate	Total	Desc	Qty	Rate	Total
Class G 94lb/sk	285						
Gypsum	536.00						
Defoamer	81.0						
RFL-70X(Latex)	108.0						
RFL-9(Fluid Loss)	67.0						
RCD-3(Dispersant)	81.0						
Sugar	150.00						
Alpha	15.00						
Pump & Bulk/Hour	2.00						
Data Recording	1.00						
Bulk Material Blending	3.00						
Bulk Material Delivery	3.00						
Print				Sign			
				Date			

"Here Safety meets Quality at the Axis of Efficiency"

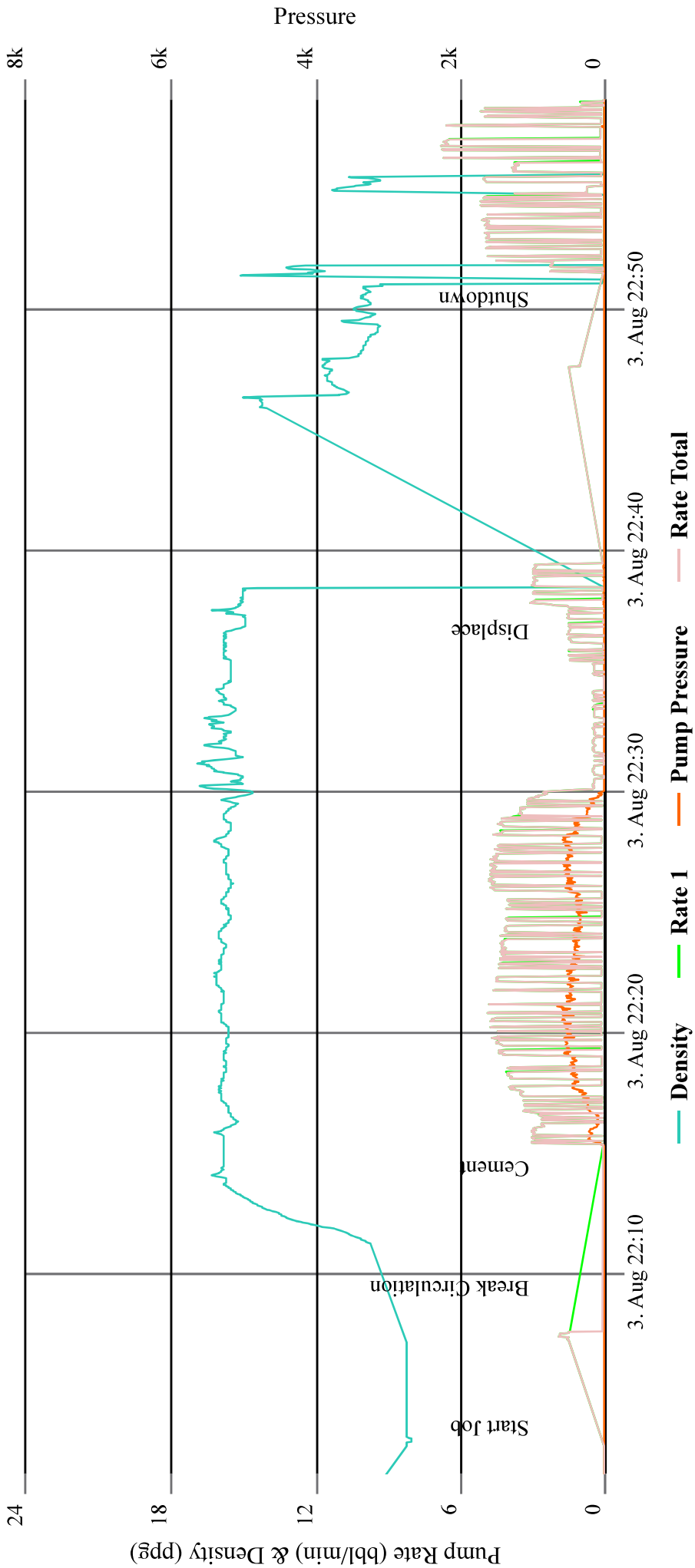
CPC 4-42-4 SUSSEX

CEMENTING



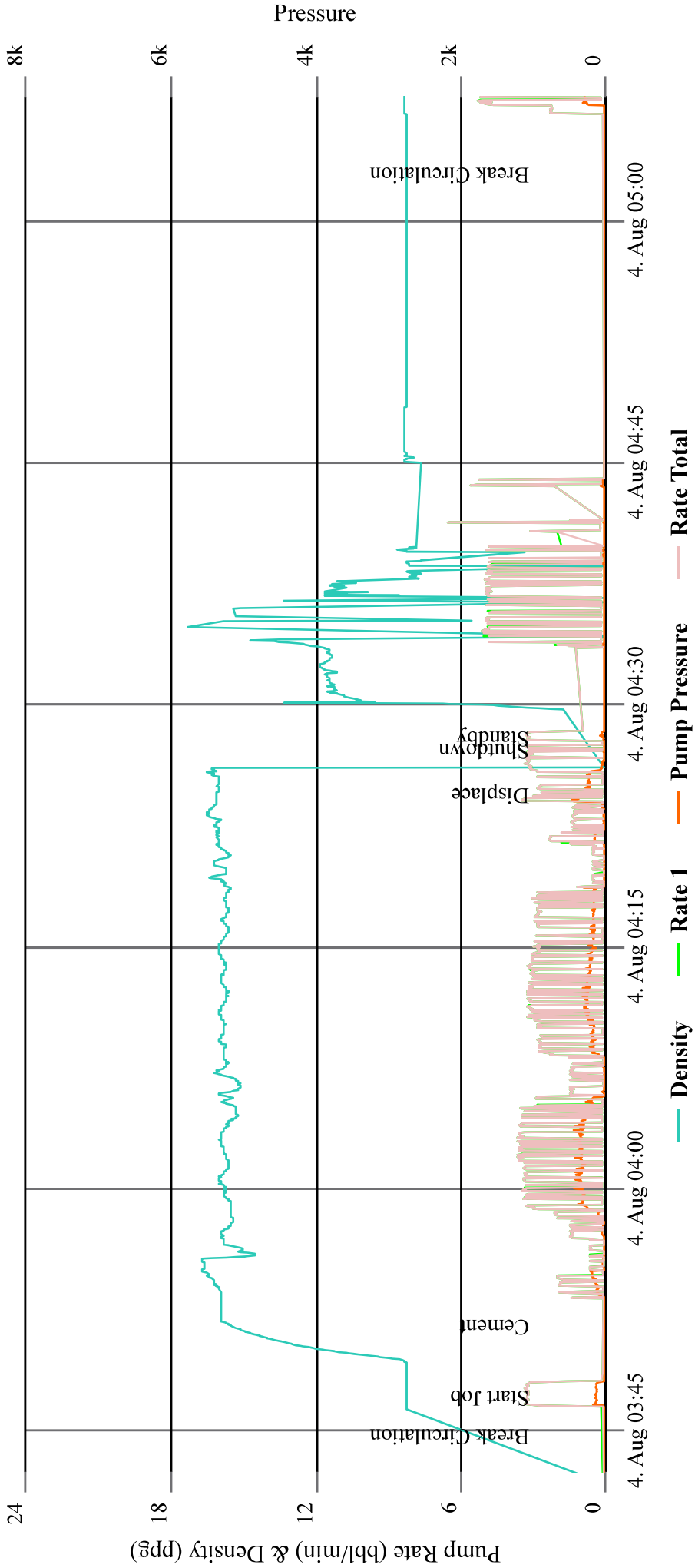
CPC 4-42-4 L-AGM

CEMENTING



CPC 4-42-4 U-AGM

CEMENTING

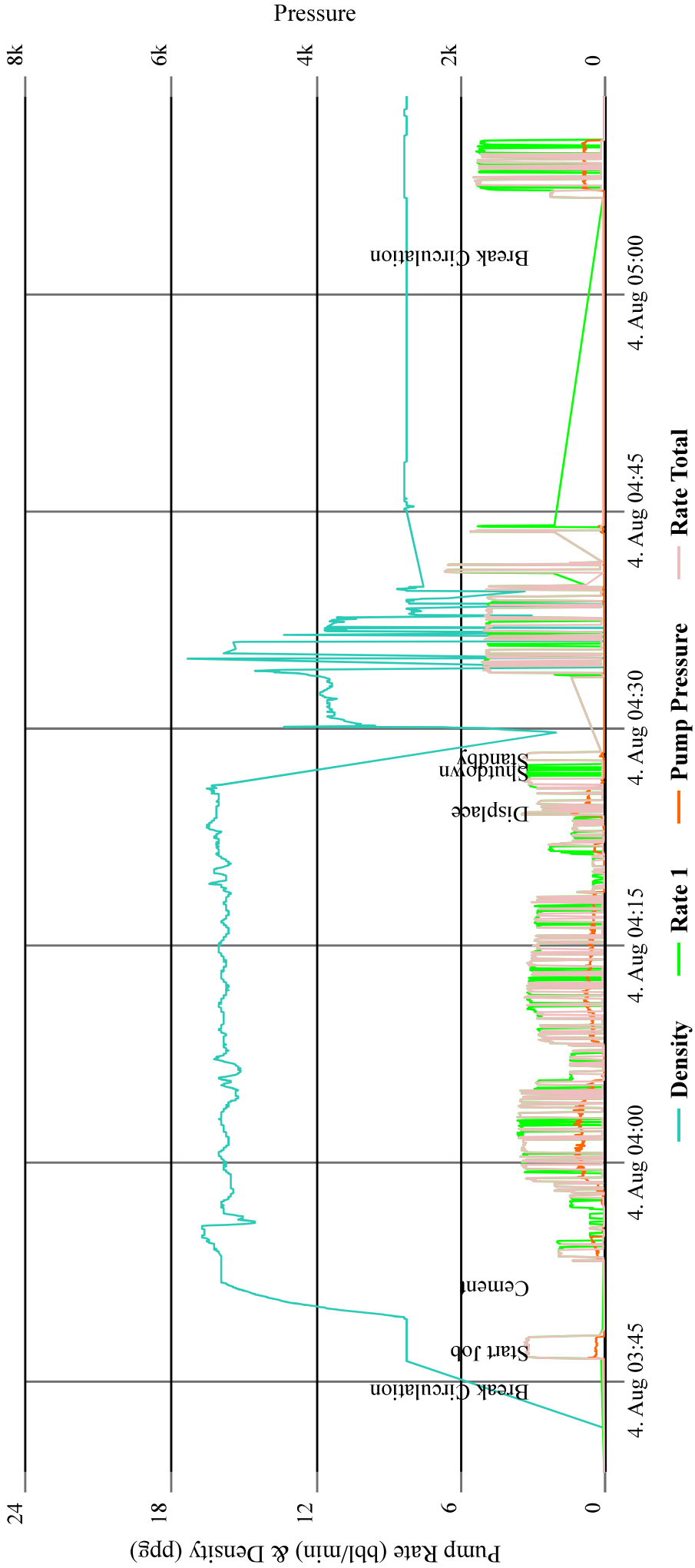




Print *Sign* *Date*

CPC 4-42-4 U-AGM

CEMENTING



CPC 4-42-4 S-AGM

CEMENTING

