

THIS DRAWING AND THE DESIGN IT COVERS ARE CONFIDENTIAL AND REMAIN THE PROPERTY OF ANADARKO PETROLEUM CORPORATION AND SHALL NOT BE DISCLOSED TO OTHERS OR REPRODUCED IN ANY MANNER OR USED FOR ANY PURPOSE WHATSOEVER EXCEPT BY WRITTEN PERMISSION BY THE OWNER.

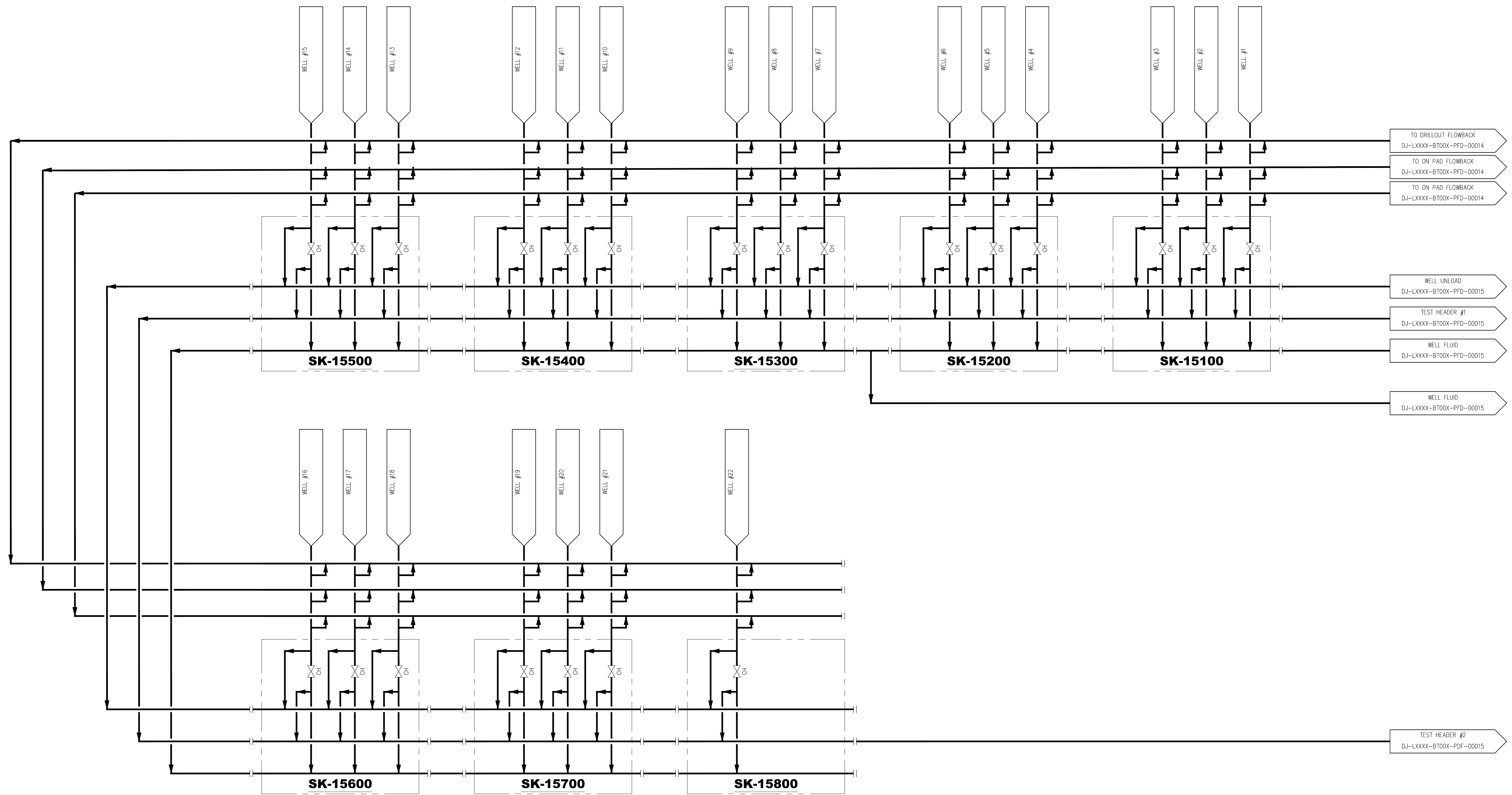
PLOT STYLE: APC_Standard.ctb

LAST SAVED: 5/16/2024 BY: Brandon Wells

FILE LOCATION: c:\604501 - DJ Core Facilities\DJ-LXXX-BT00X - Tulip\1 - PFD - PFD\PDFs\DJ-LXXX-BT00X-PFD-00010.dwg

SK-15100-15700
WELLHEAD MANIFOLD
(3 PACK)

SK-15800
WELLHEAD MANIFOLD
(1 PACK)



NOTES:

DWG. NO.	TITLE	NO.	DESCRIPTION	BY	DATE	CHK	DATE	APPR	DATE

REFERENCE DRAWINGS

REVISIONS

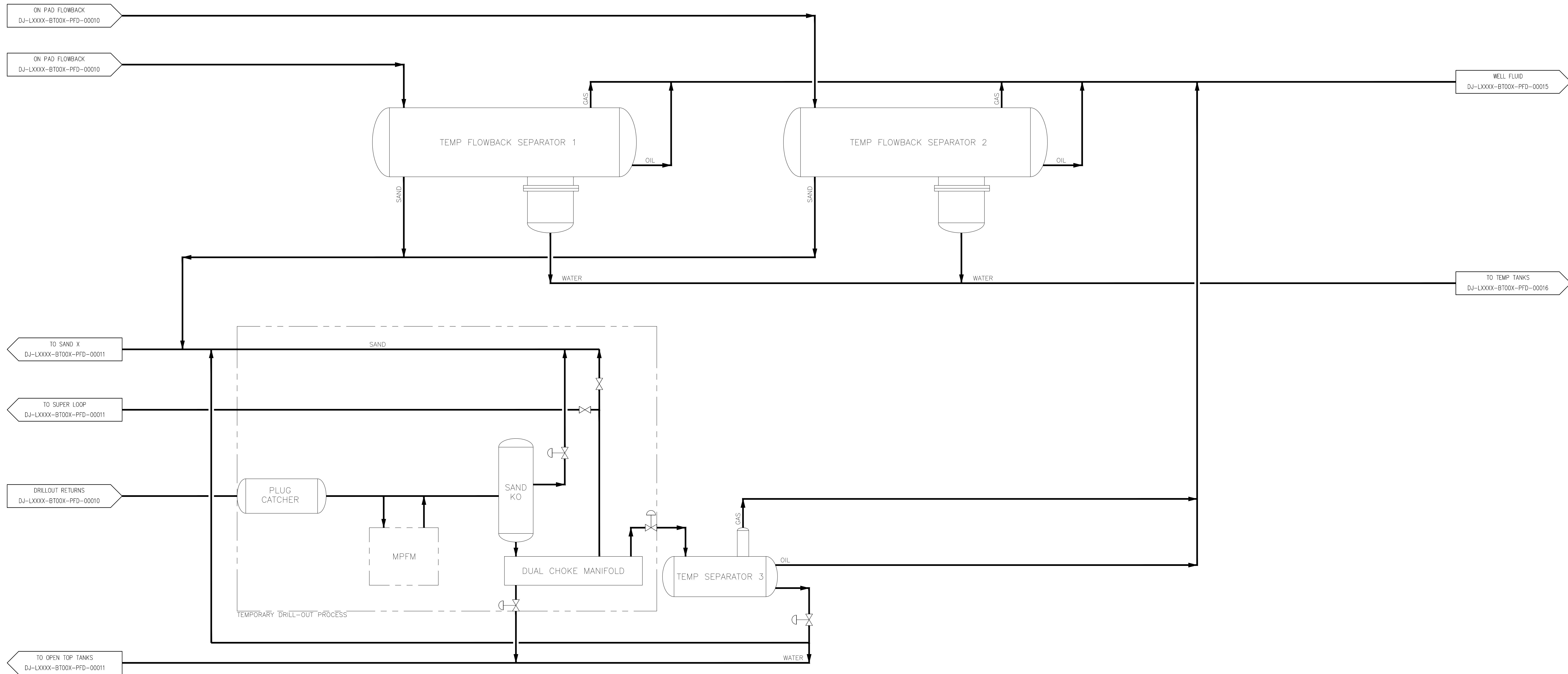
Kerr-McGee Oil & Gas Onshore LP

TULIP

PROCESS FLOW DIAGRAM
PRODUCTION WELLPAD

DRAWN BY: BMW	CREATION DATE: 05/09/24	AFE No.: -
APPROVED: JUB	APPR. DATE: 05/09/24	
DWG. No.: DJ-LXXX-BT00X-PFD-00010		SHEET No. - OF -
SCALE: -		

THIS DRAWING AND THE DESIGN IT COVERS ARE CONFIDENTIAL AND REMAIN THE PROPERTY OF ANADARKO PETROLEUM CORPORATION AND SHALL NOT BE DISCLOSED TO OTHERS OR REPRODUCED IN ANY MANNER OR USED FOR ANY PURPOSE WHATSOEVER EXCEPT BY WRITTEN PERMISSION BY THE OWNER.



NOTES:

DWG. NO.	TITLE

NO.	DESCRIPTION	DATE	BY	CHK.	DATE	APPR.	DATE

Kerr-McGee Oil & Gas Onshore LP

TULIP

PROCESS FLOW DIAGRAM TEMPORARY FLOWBACK		
DRAWN BY: BMW	CREATION DATE: 05/09/24	AFE No.: -
APPROVED: JJB	APPR. DATE: 05/09/24	
	DWG. No.: DJ-LXXXX-BT00X-PFD-00014	SHEET No. 1
SCALE: -		- OF -

FILE LOCATION: C:\604501 - DJ Core Facilities\DJ-LXXXX-BT00X - Tulip\1. PFD-PID\PDs\DJ-LXXXX-BT00X-PFD-00014.dwg
LAST SAVED: 5/16/2024 BY: Brandon Wells
PLOT STYLE: APC-Standard.ctb

TK-90100-92200

TEMPORARY TANKS

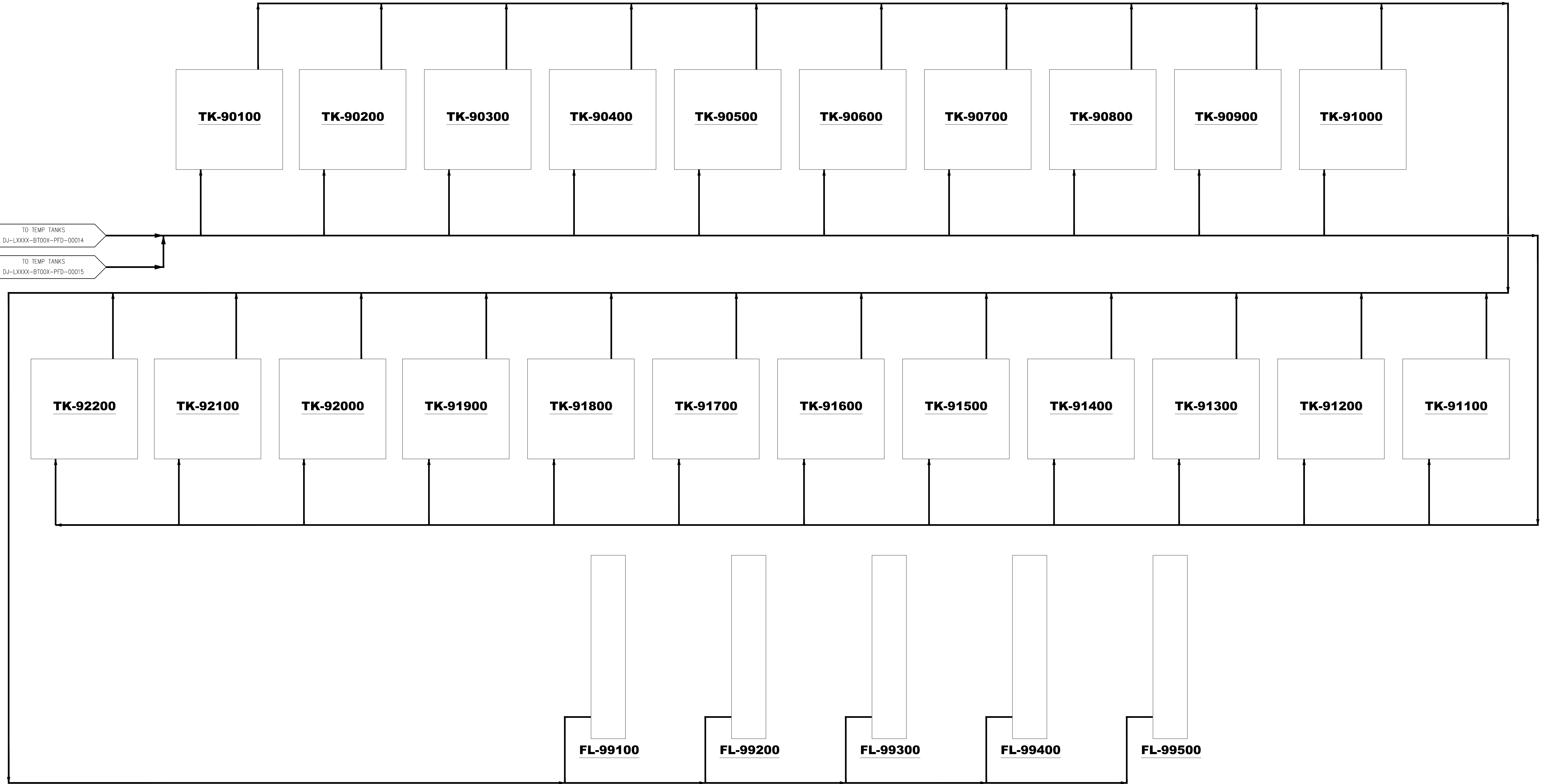
MANUFACTURER: DRAGON PRODUCTS
 DIM: 43'L X 9'H
 SIZE: 500 OR 600 BBL

FL-99100-99500

ECD

MANUFACTURER: IES
 SIZE: 48"

THIS DRAWING AND THE DESIGN IT COVERS ARE CONFIDENTIAL AND REMAIN THE PROPERTY OF ANADARKO PETROLEUM CORPORATION AND SHALL NOT BE DISCLOSED TO OTHERS OR REPRODUCED IN ANY MANNER OR USED FOR ANY PURPOSE WHATSOEVER EXCEPT BY WRITTEN PERMISSION BY THE OWNER.



NOTES:

REFERENCE DRAWINGS	
DWG. NO.	TITLE

REVISIONS				
NO.	DESCRIPTION	DATE	BY	CHK.

Kerr-McGee Oil & Gas Onshore LP

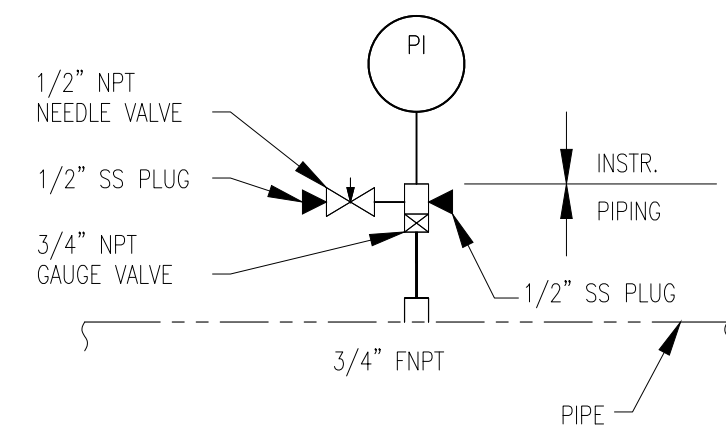
TULIP

PROCESS FLOW DIAGRAM PRODUCTION FACILITY		
DRAWN BY: BMW	CREATION DATE: 05/09/24	AFE No.: -
APPROVED: JJB	APPR. DATE: 05/09/24	
	DWG. No.: DJ-LXXXX-BT00X-PFD-00016	SHEET No. - OF - 1
SCALE: -		

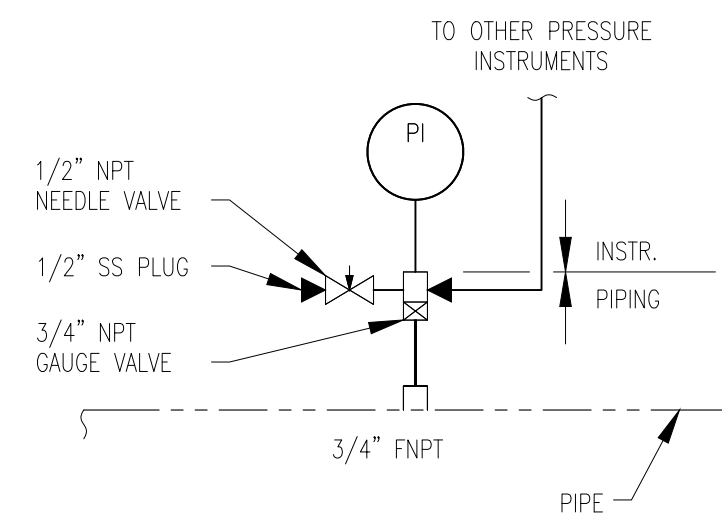
FILE LOCATION: O:\694501 - DJ Core Facilities\DJ-LXXXX-BT00X - Tulip\1 - PFD-PID\PDs\DJ-LXXXX-BT00X-PFD-00016.dwg
 LAST SAVED: 5/16/2024 BY: Brandon Wells
 PLOT STYLE: APC_Standard.ctb

THIS DRAWING AND THE DESIGN IT COVERS ARE CONFIDENTIAL AND REMAIN THE PROPERTY OF OCCIDENTAL PETROLEUM CORPORATION AND SHALL NOT BE DISCLOSED TO OTHERS OR REPRODUCED IN ANY MANNER OR USED FOR ANY PURPOSE WHATSOEVER EXCEPT BY WRITTEN PERMISSION BY THE OWNER.

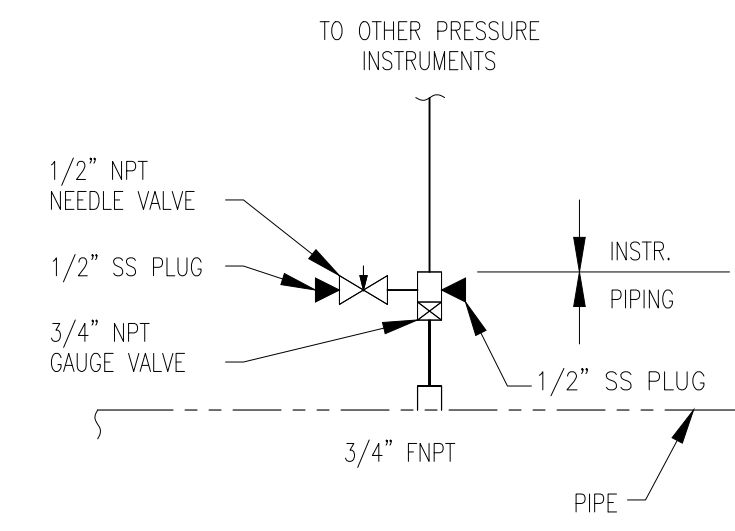
PRESSURE CONNECTION (PI ONLY)



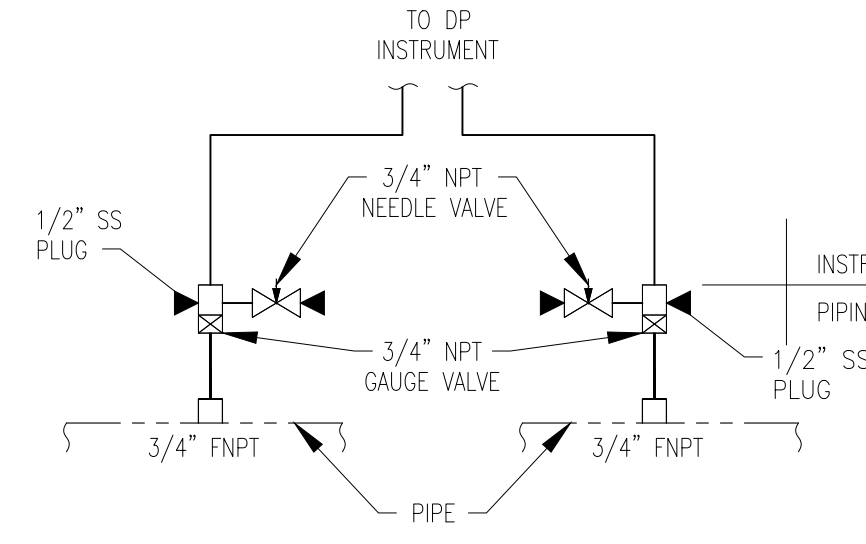
PRESSURE CONNECTION WITH PI



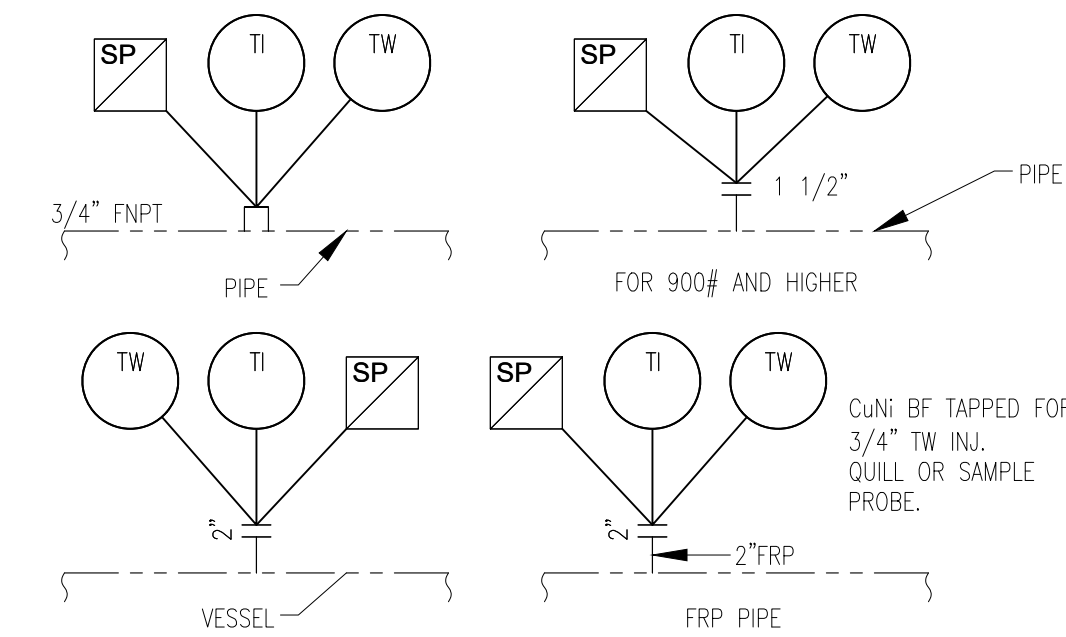
PRESSURE CONNECTION WITHOUT PI



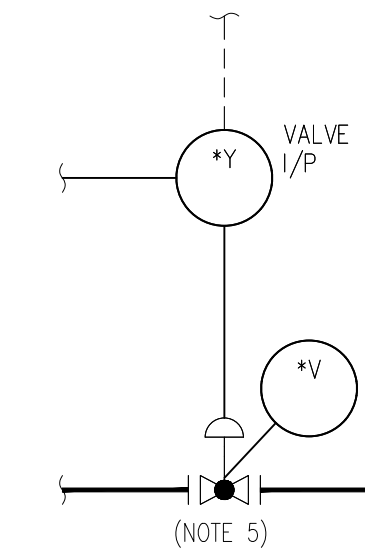
DIFFERENTIAL PRESSURE CONNECTION



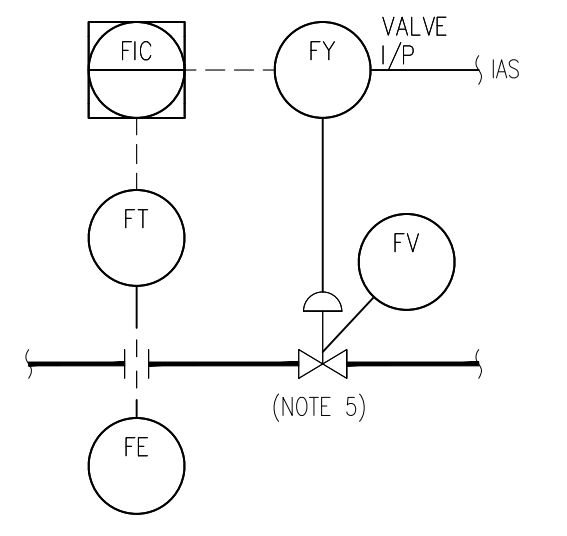
TEMPERATURE CONNECTION SAMPLE PROBE OR INJECTION QUILL



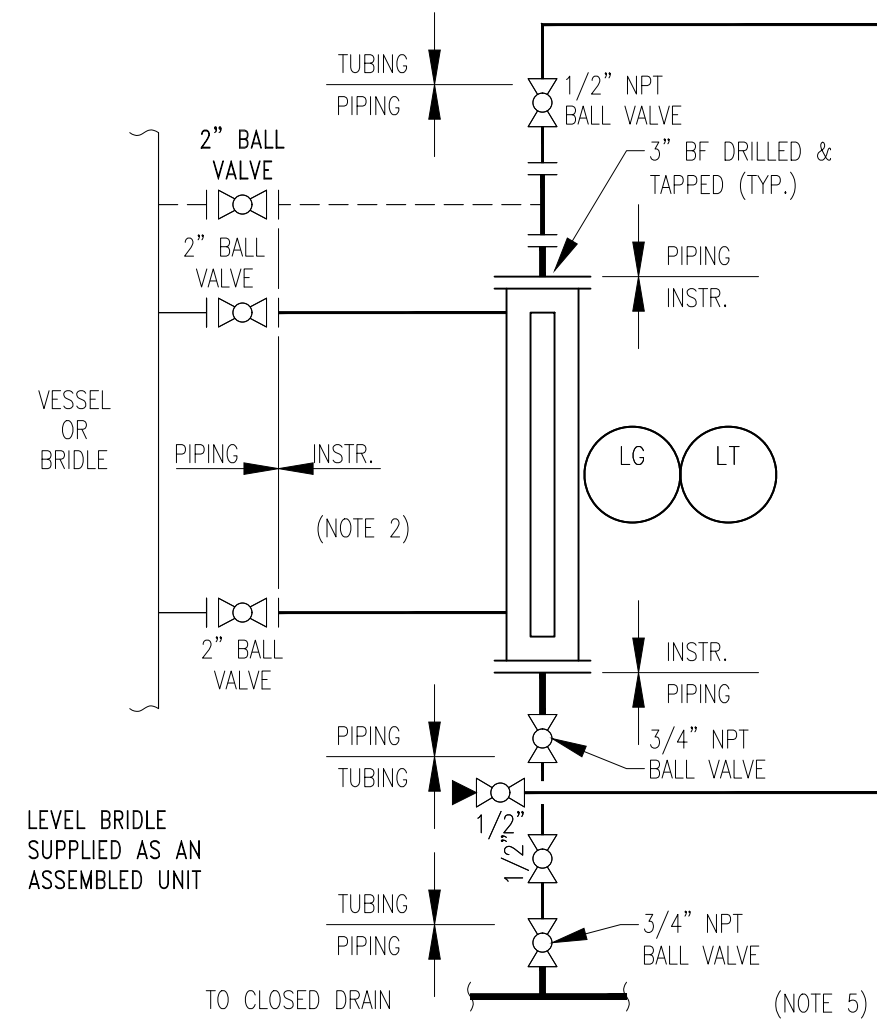
CONTROL VALVE (ELECTRONIC CONTROL)



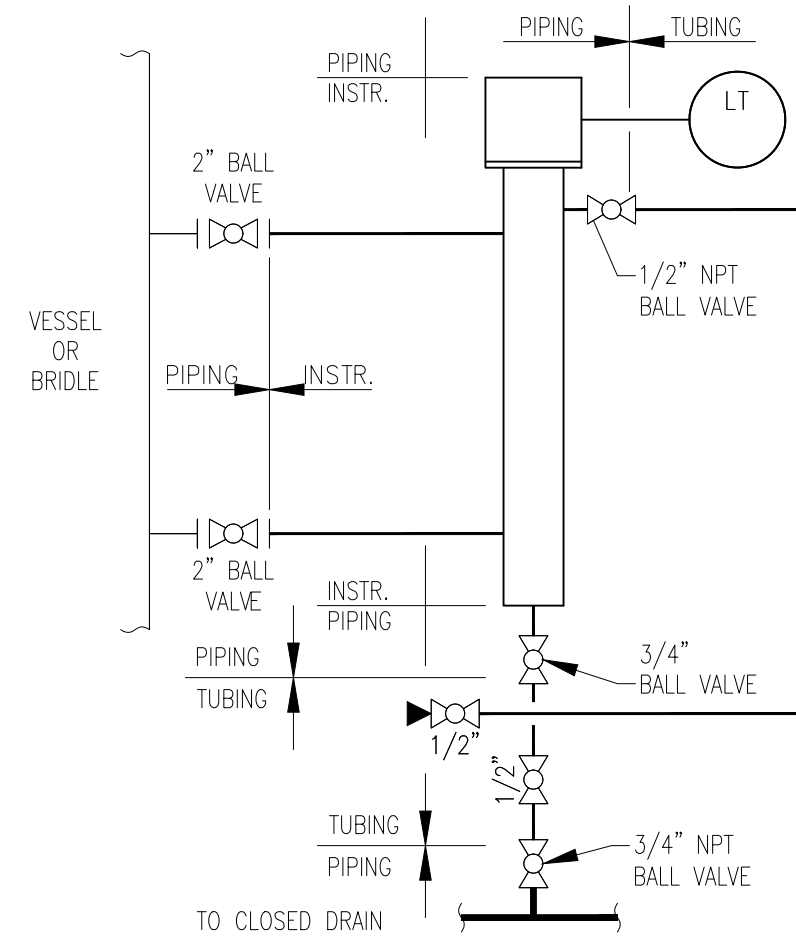
CONTROL LOOP



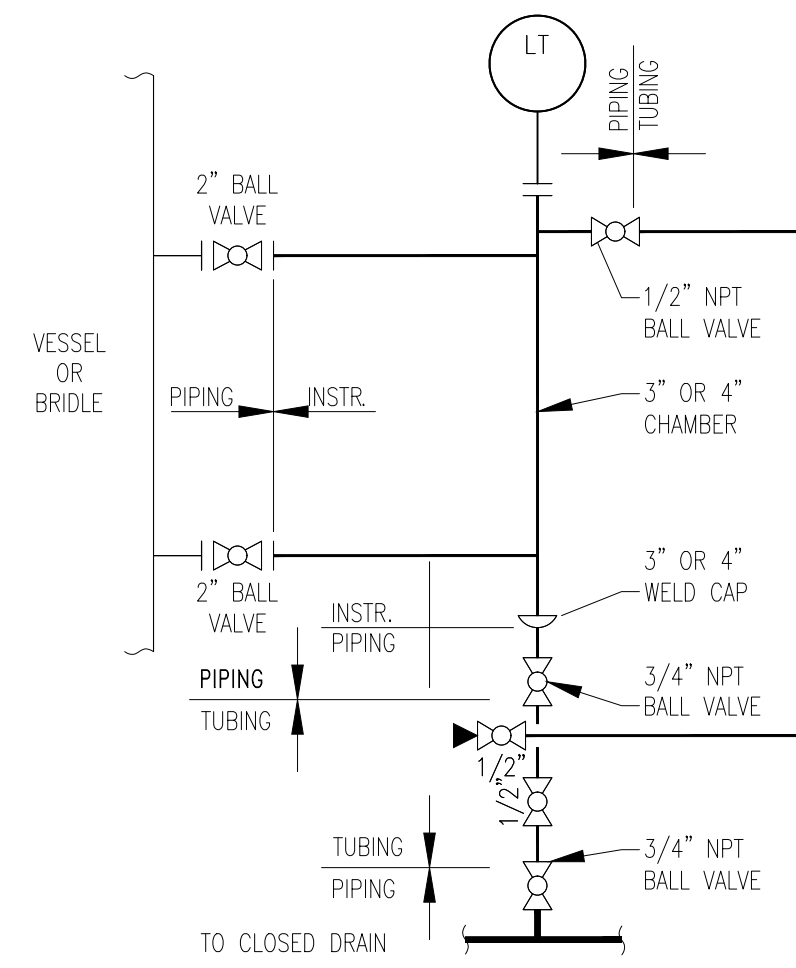
LEVEL GAUGE TRANSMITTER & INDICATOR (MAGNETIC FLOAT TYPE)



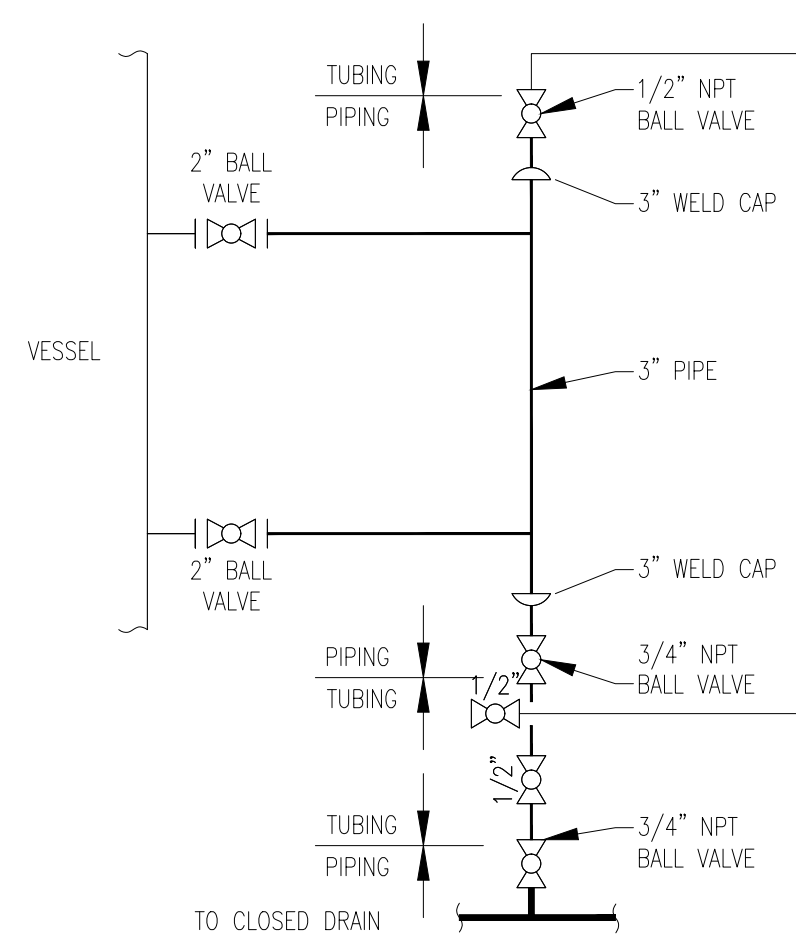
EXTERNAL CAGE MOUNTED LEVEL TRANSMITTER (DISPLACER)



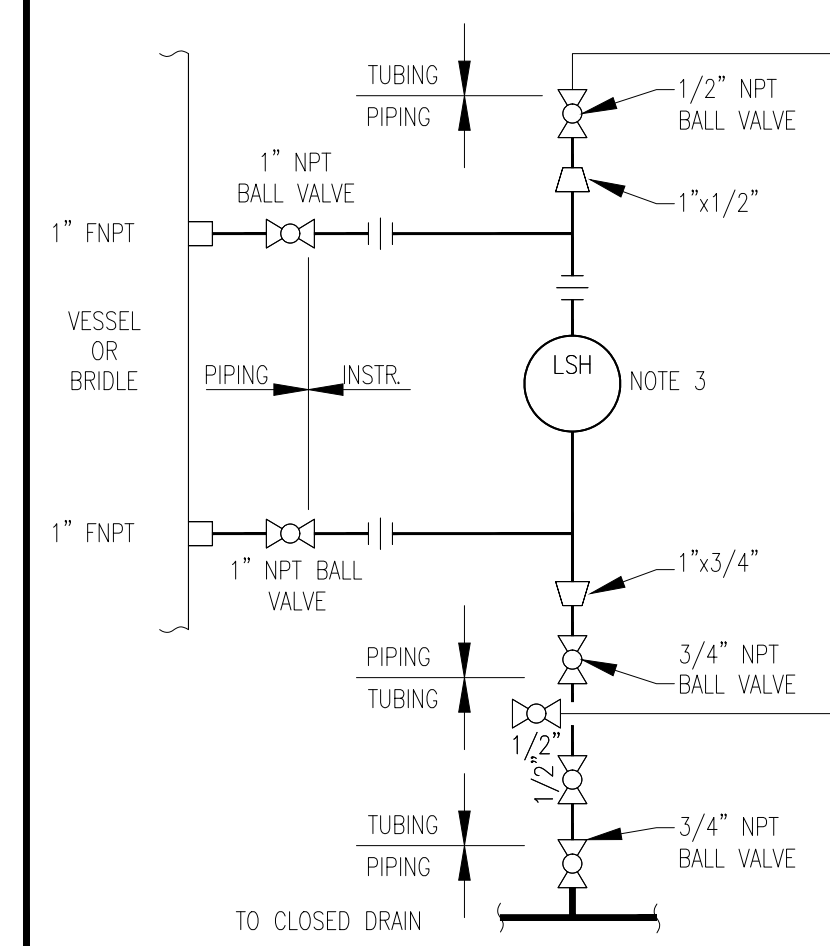
LEVEL TRANSMITTER & INDICATOR (LEVEL TRANSMITTER SUPPLIED AS AN ASSEMBLED UNIT)



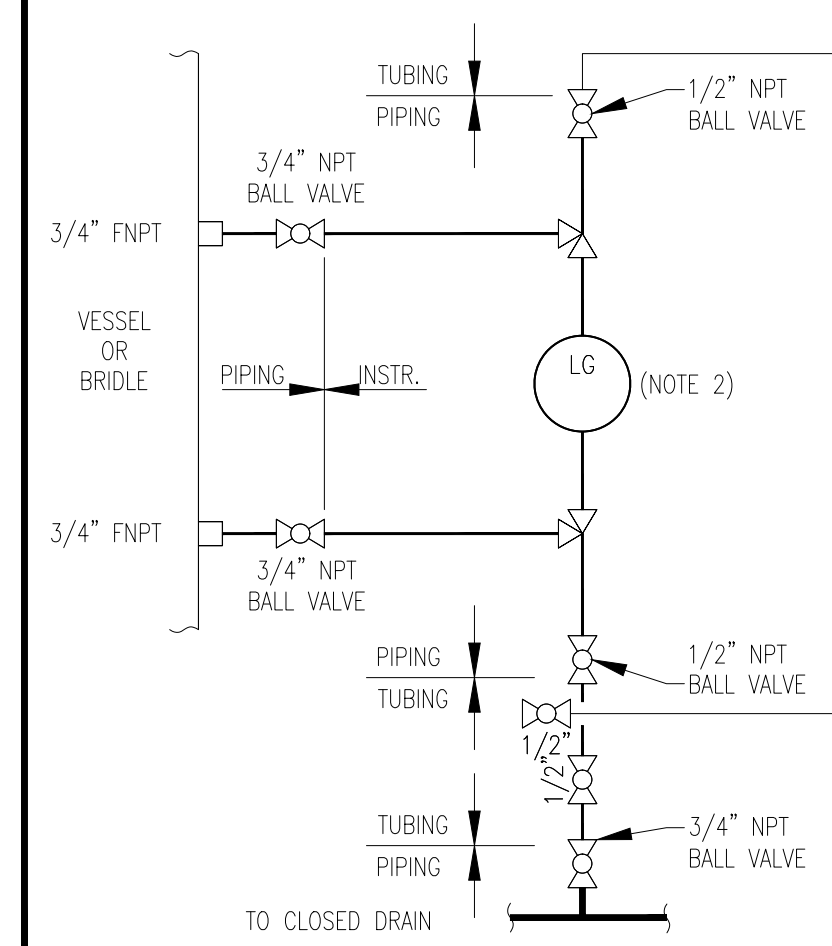
INSTRUMENT BRIDLE



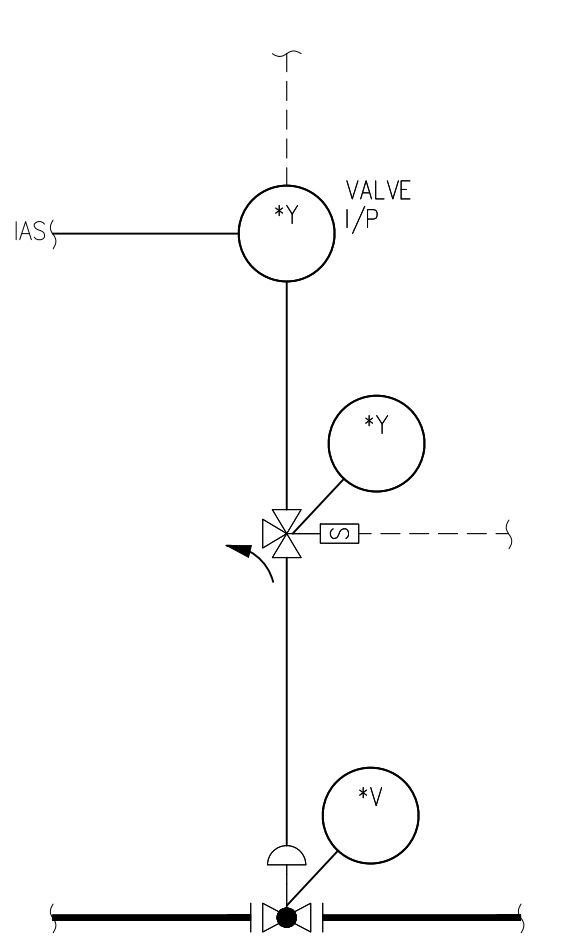
DIRECT MOUNTED LEVEL SENSOR (LSH, LSL)



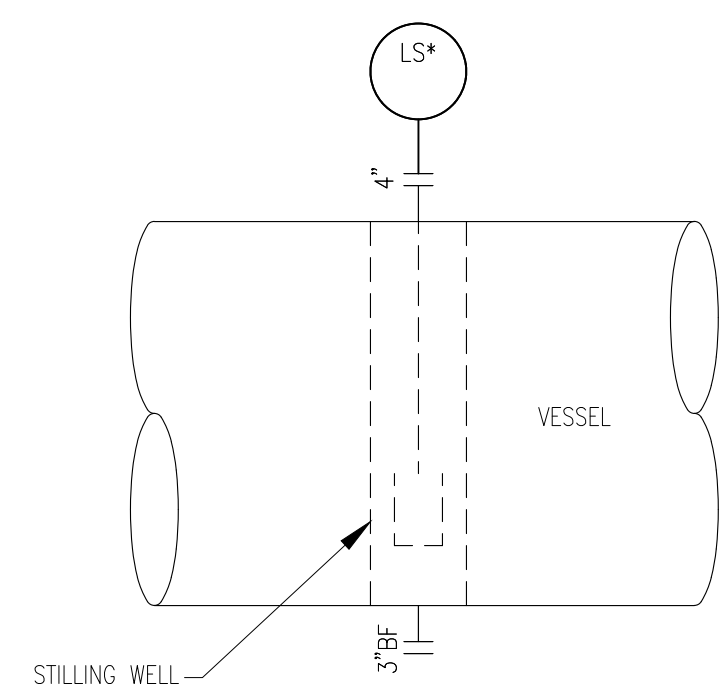
DIRECT MOUNTED LEVEL GAUGE (LG)



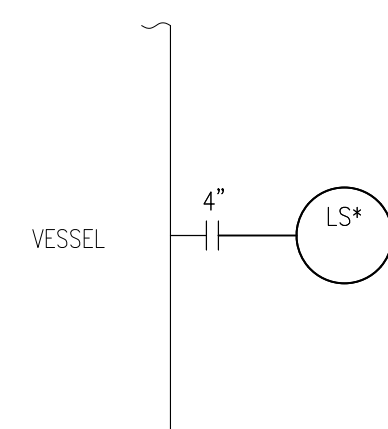
CONTROL VALVE (WITH SOLENOID TRIP)



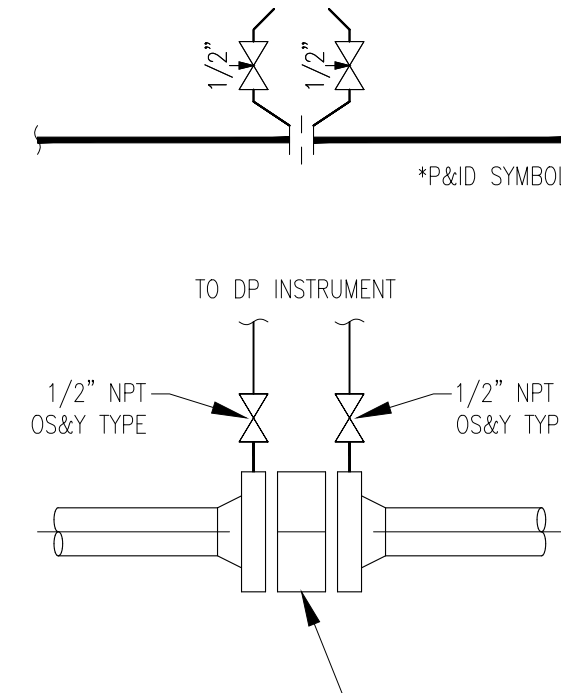
DIRECT TOP MOUNTED LEVEL SWITCH (INTERNAL FLOAT)



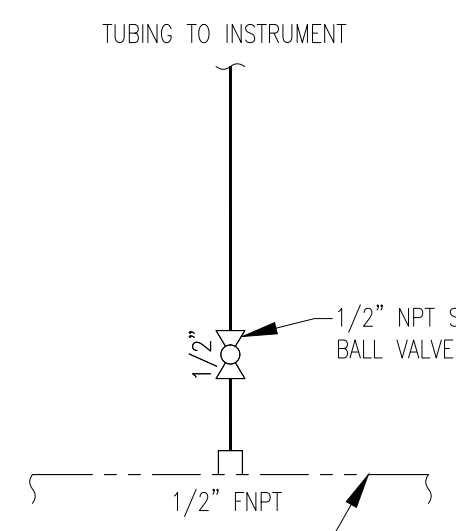
DIRECT SIDE MOUNTED LEVEL SWITCH (INTERNAL FLOAT)



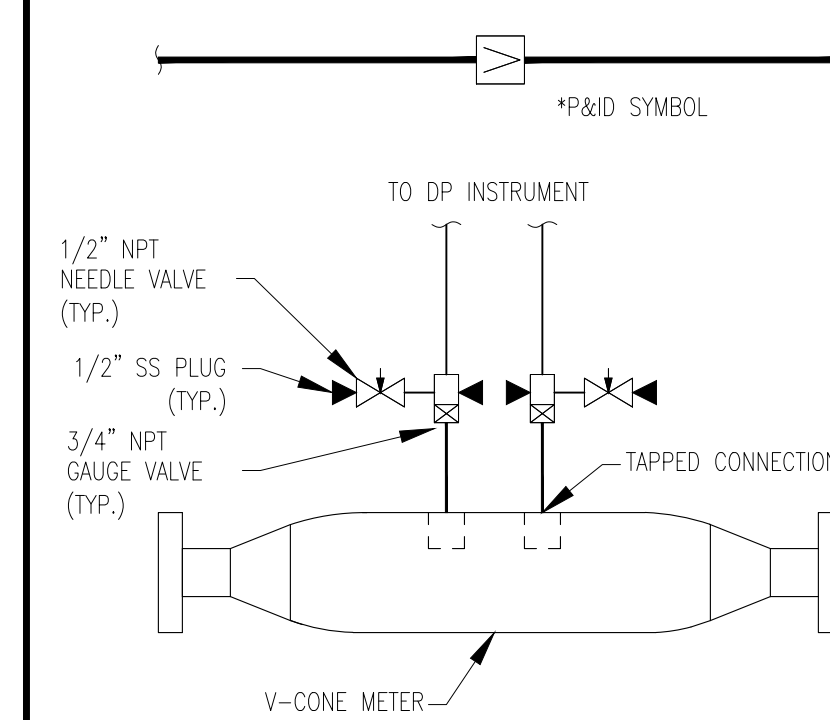
ORIFICE METER CONNECTION (FE)



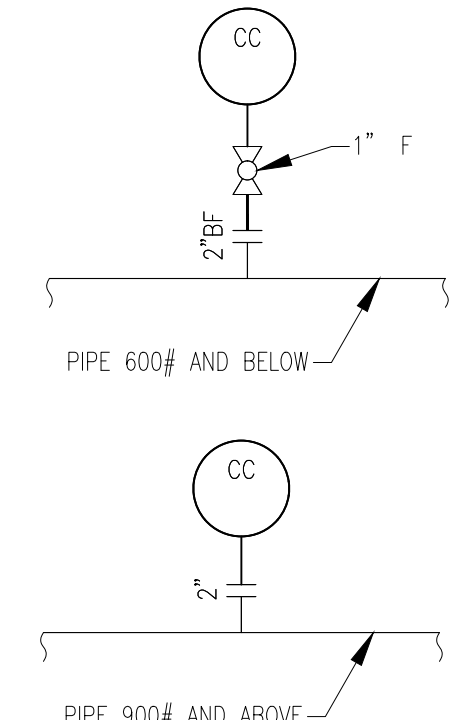
INSTRUMENT AIR TAP



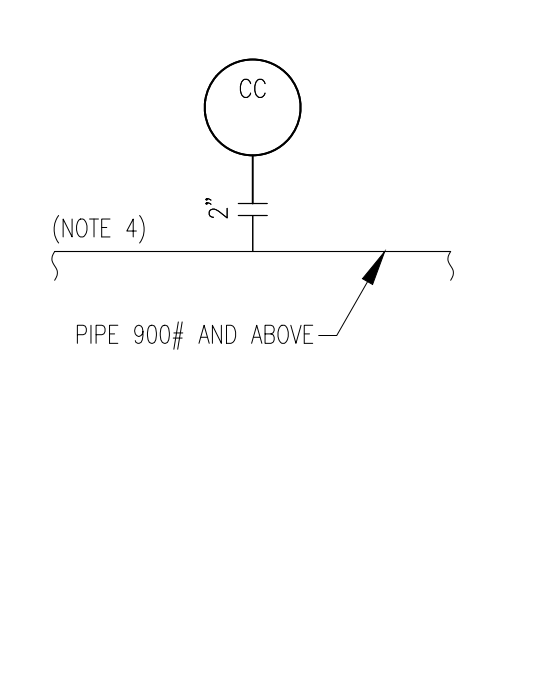
V-CONE METER CONNECTION



CORROSION COUPON



CORROSION COUPON (AMINE PROJECT)



NOTES:

REFERENCE DRAWINGS

REVISIONS

DWG. NO.	TITLE

ISSUED FOR REVIEW

NO.	DESCRIPTION	DATE	DATE	DATE



FACILITY NAME

PIPING & INSTRUMENTATION DIAGRAM INSTRUMENTATION LEGEND

DRAWN BY: MJ	CREATION DATE: -	AFE No.: -
APPROVED: -	APPR. DATE: -	
	DWG. No.:	SHEET No. 3 OF 4
SCALE: AS NOTED	OXY-PID-STD-00012	

PLOT STYLE: Oxy Rockies Standard.ctb
LAST SAVED: 5/15/2024 5:15:24 PM BY: Brandon Wells
FILE LOCATION: G:\604501 - DJ Core Facilities\QD-LXXX-BTDX - Tulip\X:\PFD-PID\VPDs\OXY-PID-STD-00012.dwg

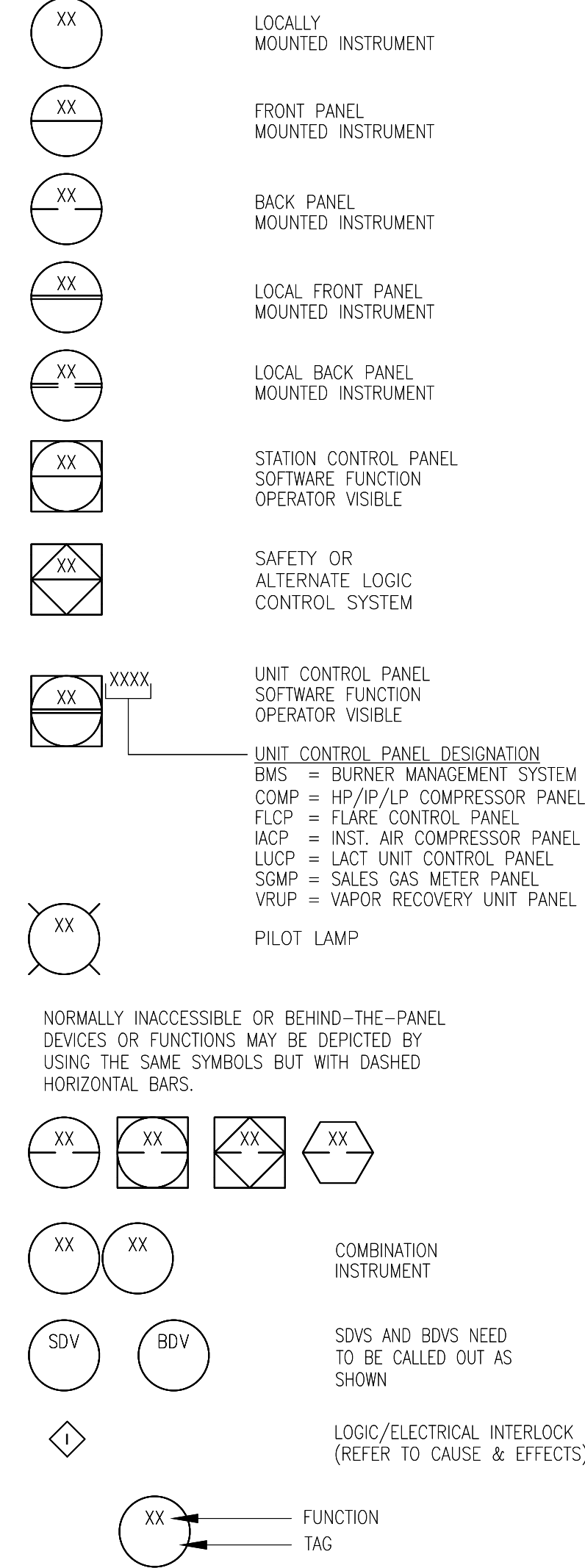
THIS DRAWING AND THE DESIGN IT COVERS ARE CONFIDENTIAL AND REMAIN THE PROPERTY OF OCCIDENTAL PETROLEUM CORPORATION AND SHALL NOT BE DISCLOSED TO OTHERS OR REPRODUCED IN ANY MANNER OR USED FOR ANY PURPOSE WHATSOEVER EXCEPT BY WRITTEN PERMISSION BY THE OWNER.

FILE LOCATION: G:\604501 - DJ Core Facilities\QD-LXXX-B\00X - Tulp\X1 - PFD-PID\VPDs\OXY-PID-STD-00013.dwg LAST SAVED: 5/15/2024 BY: Brandon Wells PLOT STYLE: Oxy Rockies Standard.ctb

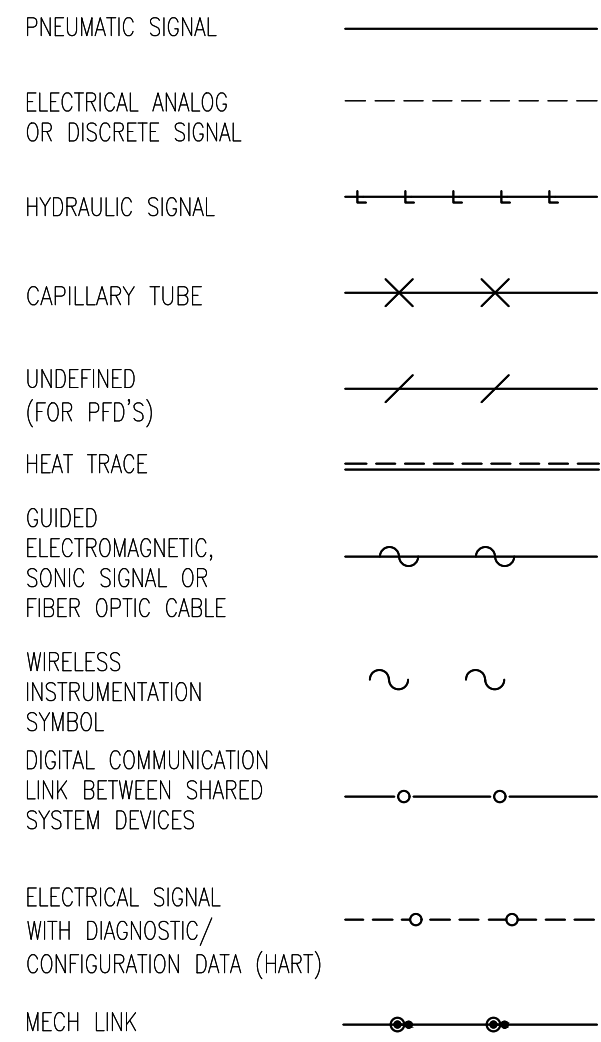
INSTRUMENT IDENTIFICATION

AAH ANALYZER ALARM HIGH	PI PRESSURE INDICATOR
AE ANALYZER ELEMENT	PIT PRESSURE INDICATING TRANSMITTER
AI ANALYZER INDICATOR	PIC PRESSURE INDICATING CONTROLLER
ASH COMBUSTIBLE GAS DETECTOR	PR PRESSURE RECORDER
AT ANALYZER TRANSMITTER	PRC PRESSURE RECORDING CONTROLLER
BDV BLOWDOWN VALVE	PS PRESSURE SWITCH
BDY BLOWDOWN SOLENOID VALVE	PSE PRESSURE SAFETY ELEMENT
BFL BURNER FLAME LOW LOW	PSH PRESSURE SWITCH HIGH HIGH
BS&W BURNER MONITOR	PSHH PRESSURE SWITCH HIGH HIGH
ESD EMERGENCY SHUTDOWN	PSL PRESSURE SWITCH LOW LOW
FA FLAME ARRESTOR	PSLL PRESSURE SWITCH LOW LOW
FAH FLOW ALARM HIGH	PSV PRESSURE SAFETY VALVE
FAHH FLOW ALARM HIGH HIGH	PT PRESSURE TRANSMITTER
FAL FLOW ALARM LOW	PCV PRESSURE CONTROL VALVE
FALL FLOW ALARM LOW LOW	PRV PRESSURE TRANSDUCER/RELAY
FC FLOW CONTROLLER	PY RESTRICTING ORIFICE
FE FLOW ELEMENT	SA SPARK ARRESTOR
FI FLOW INDICATOR	SAH SPEED ALARM HIGH
FIT FLOW INDICATING TRANSMITTER	SAHH SPEED ALARM HIGH HIGH
FIC FLOW INDICATOR CONTROLLER	SSH SPEED SWITCH HIGH
FQI FLOW QUOTIENT INDICATOR	SSHH SPEED SWITCH HIGH HIGH
FR FLOW RECORDER	SDV SHUTDOWN VALVE
FRC FLOW RECORDING CONTROLLER	SDY SHUTDOWN SOLENOID VALVE
FS FLOW SWITCH	SI SPEED INDICATOR
FSH FLOW SWITCH HIGH	SI SPECIALITY ITEM
FSHH FLOW SWITCH HIGH HIGH	SV SOLENOID VALVE
FSL FLOW SWITCH LOW	TAH TEMPERATURE ALARM HIGH
FSLL FLOW SWITCH LOW LOW	TAHH TEMPERATURE ALARM HIGH HIGH
FSV FLOW SAFETY (CHECK) VALVE	TAL TEMPERATURE ALARM LOW
FT FLOW TRANSMITTER	TALL TEMPERATURE ALARM LOW LOW
FV FLOW VALVE	TC TEMPERATURE CONTROLLER
FY FLOW TRANSDUCER/RELAY	TE TEMPERATURE ELEMENT
FX FLOW STRAIGHTENING VANES	TH THIEF HATCH
HCV HAND CONTROL VALVE	TI TEMPERATURE INDICATOR
HIC HAND INDICATING CONTROLLER	TIC TEMPERATURE INDICATING CONTROLLER
HOA HAND OFF AUTO	TIT TEMPERATURE INDICATING TRANSMITTER
HS HAND SWITCH	TR TEMPERATURE RECORDER
HV HAND VALVE	TSE TEMPERATURE SAFETY ELEMENT
HR HAND RELAY	TSH TEMPERATURE SWITCH HIGH
II CURRENT INDICATOR	TSHH TEMPERATURE SWITCH HIGH HIGH
IOA JOG OFF AUTO	TSL TEMPERATURE SWITCH LOW
KK TIMER	TSLL TEMPERATURE SWITCH LOW LOW
LAH LEVEL ALARM HIGH	TT TEMPERATURE TRANSMITTER
LAHH LEVEL ALARM HIGH HIGH	TV TEMPERATURE CONTROL VALVE
LAL LEVEL ALARM LOW	TY TEMPERATURE TRANSDUCER/RELAY
LALL LEVEL ALARM LOW LOW	TW THERMOWELL
LC LEVEL CONTROLLER	UA UNIT TROUBLE ALARM
LG LEVEL GAUGE	VAH VIBRATION ALARM HIGH
LI LEVEL INDICATOR	VAHH VIBRATION ALARM HIGH HIGH
LIC LEVEL INDICATING CONTROLLER	VSH VIBRATION SWITCH HIGH
LIT LEVEL INDICATING TRANSMITTER	VSHH VIBRATION SWITCH HIGH HIGH
LS LEVEL SWITCH	XA UNCLASSIFIED ALARM
LSH LEVEL SWITCH HIGH	XC FIXED CHOKE
LSHH LEVEL SWITCH HIGH HIGH	XCP CORROSION COUPON
LSL LEVEL SWITCH LOW	XCV ADJUSTABLE CHOKE VALVE
LSLL LEVEL SWITCH LOW LOW	XDV DELUGE VALVE
LT LEVEL TRANSMITTER	XI UNCLASSIFIED INDICATOR
LV LEVEL VALVE	XPI PIC PASSAGE INDICATOR (PIC SIG)
LY LEVEL TRANSDUCER/RELAY	XV SOLENOID ACTUATED ON/OFF VALVE
NP SAND PROBE	YV DIVERTER VALVE
PAH PRESSURE ALARM HIGH	YY DIVERTER VALVE TRANSDUCER
PAHH PRESSURE ALARM HIGH HIGH	ZC POSITION/LIMIT CLOSED
PAL PRESSURE ALARM LOW	ZIC POSITION INDICATOR CLOSED
PALL PRESSURE ALARM LOW LOW	ZIO POSITION INDICATOR OPEN
PC PRESSURE CONTROLLER	ZIT POSITION INDICATING TRANSMITTER
PCV REGULATOR	ZSC POSITION/LIMIT SWITCH CLOSED
PDA PRESSURE DIFFERENTIAL ALARM	ZSO POSITION/LIMIT SWITCH OPEN
PDAA PRESSURE DIFFERENTIAL ALARM HIGH	
PDAAH PRESSURE DIFFERENTIAL ALARM HIGH HIGH	
PDAL PRESSURE DIFFERENTIAL ALARM LOW	
PDALL PRESSURE DIFFERENTIAL ALARM LOW LOW	
PDI PRESSURE DIFFERENTIAL INDICATOR	
PDIC PRESSURE DIFFERENTIAL INDICATING CONTROLLER	
PDIT PRESSURE DIFFERENTIAL INDICATING TRANSMITTER	
PDR PRESSURE DIFFERENTIAL RECORDER	
PDRC PRESSURE DIFFERENTIAL RATIO CONTROLLER	
PDS PRESSURE DIFFERENTIAL SWITCH	
PDT PRESSURE DIFFERENTIAL TRANSMITTER	

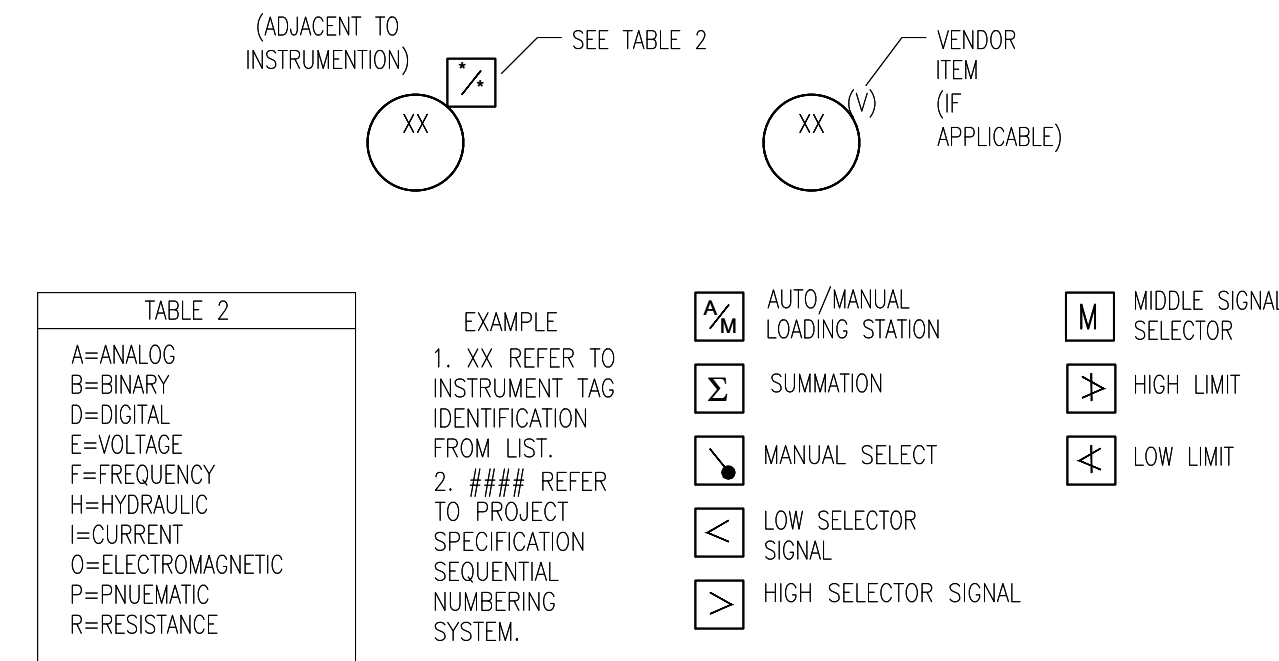
INSTRUMENTATION



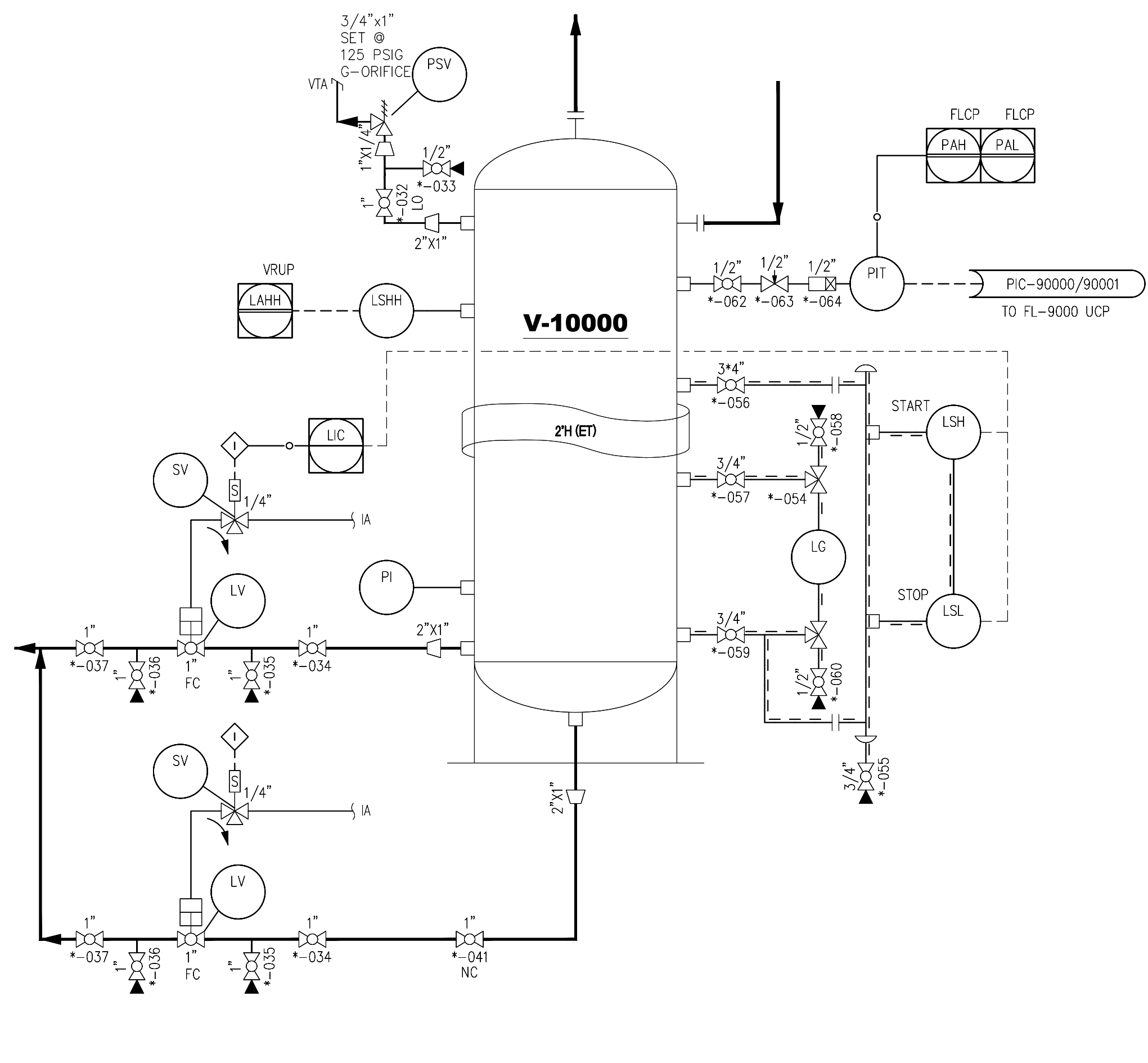
INSTRUMENTATION LINE TYPES



RELAY FUNCTION DESIGNATIONS



INSTRUMENT TAGGING EXAMPLE



NOTES:

IN INSTANCES OF ONE INSTRUMENT PER VESSEL, SUCH AS THE LC ABOVE; THE INSTRUMENT IS CALLED-OUT PER THE NUMERICAL PORTION OF THE VESSEL TAG NUMBER.

WHERE THERE IS MORE THAN ONE OF THE SAME INSTRUMENT PER VESSEL, SUCH AS THE LVs ABOVE; THE FIRST INSTRUMENT IS CALLED-OUT PER THE NUMERICAL PORTION OF THE VESSEL TAG NUMBER. THE SECOND INSTRUMENT IS CALLED-OUT IN NUMERICAL SEQUENCE.

ALPHAS ONLY AS APPROVED BY OCCIDENTAL PETROLEUM CORPORATION.

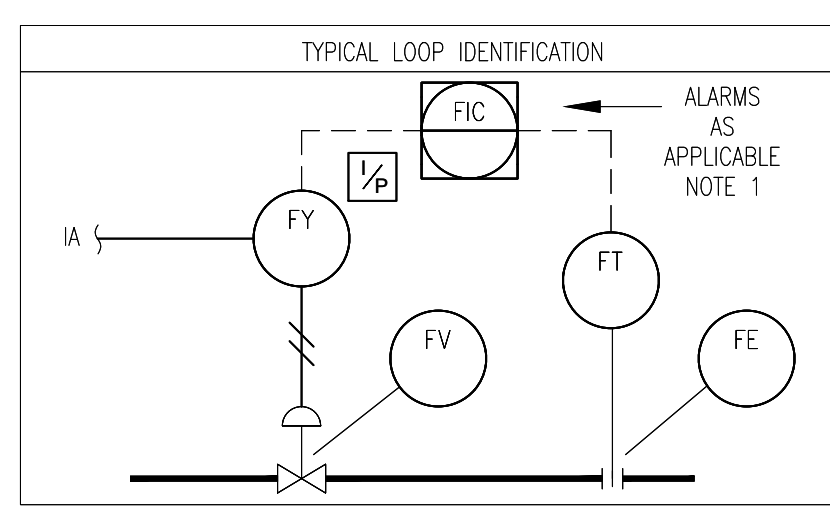
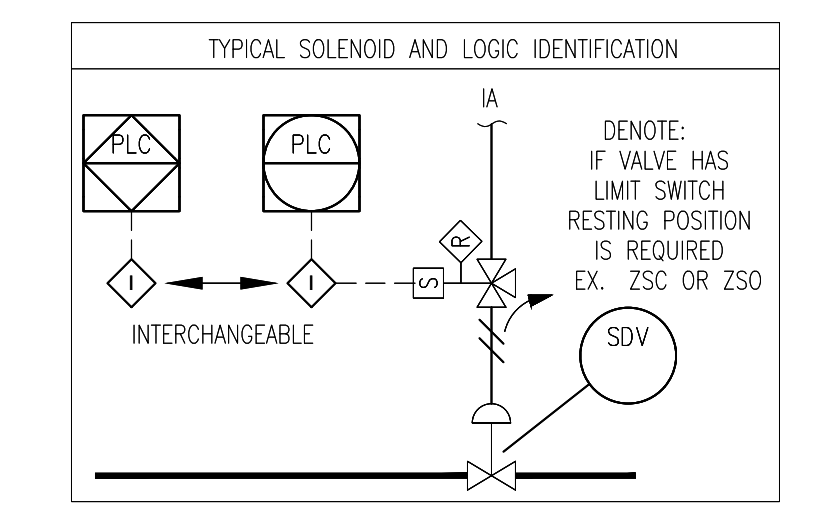
INSTRUMENT TAGGING

- (1) F(RATIO), M(MOMENTARY), K(TIME RATE OF CHANGE), Q(INTEGRATE AND TOTALIZE), OR ANY COMBINATION OF THESE IS INTENDED TO REPRESENT A NEW AND SEPARATE MEASURED VARIABLE, AND THE COMBINATION IS TREATED AS A FIRST LETTER ENTITY. THUS, INSTRUMENTS TD1 AND T1 INDICATE TWO DIFFERENT VARIABLES, NAMELY, DIFFERENTIAL-TEMPERATURE AND TEMPERATURE. MODIFYING LETTERS ARE USED WHEN APPLICABLE.
- (2) LEVEL GAUGE NOMENCLATURE:
 NUMBER OF SECTIONS (2) LG
 ILLUMINATOR I
- (3) IDENTIFY RELAYS WITH FUNCTIONAL SUPERSCRIPIT SEE TABLE
- (4) IDENTIFY ANALYZERS AND EQUIPMENT WITH SUPERSCRIPIT OUTSIDE OF CIRCLE SEE TABLE BELOW
 AE XX (SEE TABLE 3)

ANALYZER SUPERSCRIPIT TABLE 3

CO2	= CARBON DIOXIDE
GC	= GAS CHROMATOGRAPH
H2O	= MOISTURE
H2S	= HYDROGEN SULFIDE
LEL	= LOWER EXPLOSIVE LIMIT
O2	= OXYGEN
PH	= PH VALUE

- AS = AIR SUPPLY
 ES = ELECTRIC SUPPLY
 GS = GAS SUPPLY
 HS = HYDRAULIC SUPPLY
 IA = INSTRUMENT AIR
- NS = NITROGEN SUPPLY
 SS = STEAM SUPPLY
 UA = UTILITY AIR
 WS = WATER SUPPLY
- (6) ELECTRICAL RELAYS, SWITCHES, AND MISC. ITEMS IDENTIFIED WITH AN INSTRUMENT TAG BALLOON AND AN (E) SHOWN IN PLACE OF THE INSTRUMENT TAG NUMBER ARE TO BE SPECIFIED AND FURNISHED BY ELEC.
 HOA SPECIFIED & FURN. BY ELECTRICAL
 HOA SPECIFIED & FURN. BY INSTRUMENTS
 - (7) INDICATING AND BLIND SWITCHES ARE IDENTIFIED HIGH, LOW, HIGH HIGH OR LOW LOW THUS:
 LSH LSL LSHH LSLL



NOTES:

DWG. NO.	TITLE	NO.	DESCRIPTION	DATE	DATE	DATE

REFERENCE DRAWINGS

--	--	--	--

REVISIONS

ISSUED FOR REVIEW

BY	DATE	CHK	DATE	APPR	DATE
BMW	05/09/24	JS	05/09/24	LAB	05/09/24

FACILITY NAME

PIPING & INSTRUMENTATION DIAGRAM
INSTRUMENT IDENTIFICATION LEGEND

DRAWN BY: MJ	CREATION DATE: --	AFE No.: --
APPROVED: --	APPR. DATE: --	
DWG. No.:	OXY-PID-STD-00013	
SCALE: AS NOTED	SHEET No. 4 OF 4	